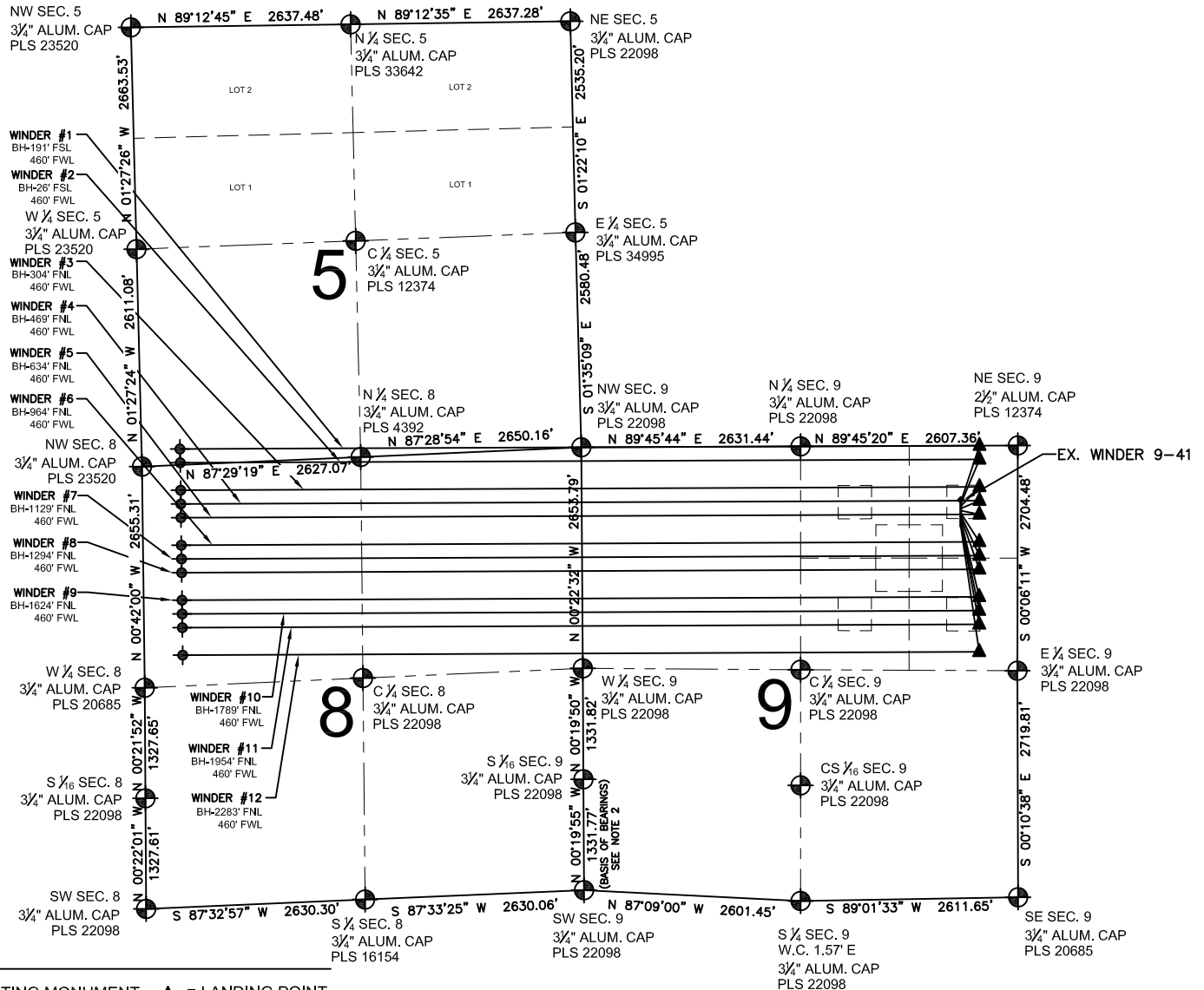


WINDER 9-D MULTI-WELL PLAN

SECTION 9, TOWNSHIP 6 NORTH, RANGE 67 WEST, 6TH P.M.



LEGEND

- = EXISTING MONUMENT ▲ = LANDING POINT
- = PROPOSED WELL LP = LANDING POINT
- ◆ = EXISTING WELL BH = BOTTOM HOLE
- ◆ = BOTTOM HOLE

NOTES:

- THIS FIELD SURVEY CONFORMS TO THE MINIMUM STANDARDS SET BY THE C.O.G.C.C., RULE NO. 215
- BEARINGS AND DISTANCE SHOWN HEREON ARE GRID AND BASED ON THE COLORADO STATE PLANE COORDINATE SYSTEM, NAD 83/2011 BETWEEN MONUMENTS AS LABELED HEREON AND ELEVATIONS SHOWN ARE NAVD 88, AS DERIVED BY GPS OBSERVATIONS.
- GRID DISTANCES ARE SHOWN, AS MEASURED IN THE FIELD, WITH TIES TO WELLS MEASURED PERPENDICULAR TO SECTION LINES.

NOTES:

WINDER #1 TO BE AT 676' FNL, 684' FEL.
BOTTOM HOLE AT 191' FSL & 460' FWL.
WINDER #2 TO BE AT 702' FNL, 684' FEL.
BOTTOM HOLE AT 26' FSL & 460' FWL.
WINDER #3 TO BE AT 728' FNL, 684' FEL.
BOTTOM HOLE AT 304' FNL & 460' FWL.
WINDER #4 TO BE AT 754' FNL, 684' FEL.
BOTTOM HOLE AT 469' FNL & 460' FWL.
WINDER #5 TO BE AT 780' FNL, 684' FEL.
BOTTOM HOLE AT 634' FNL & 460' FWL.
WINDER #6 TO BE AT 806' FNL, 684' FEL.
BOTTOM HOLE AT 964' FNL & 460' FWL.
WINDER #7 TO BE AT 832' FNL, 684' FEL.
BOTTOM HOLE AT 1129' FNL & 460' FWL.

WINDER #8 TO BE AT 858' FNL, 684' FEL.
BOTTOM HOLE AT 1294' FNL & 460' FWL.
WINDER #9 TO BE AT 884' FNL, 684' FEL.
BOTTOM HOLE AT 1624' FNL & 460' FWL.
WINDER #10 TO BE AT 910' FNL, 684' FEL.
BOTTOM HOLE AT 1789' FNL & 460' FWL.
WINDER #11 TO BE AT 936' FNL, 684' FEL.
BOTTOM HOLE AT 1954' FNL & 460' FWL.
WINDER #12 TO BE AT 962' FNL, 684' FEL.
BOTTOM HOLE AT 2283' FNL & 460' FWL.
EX. WINDER 9-41 IS 650' FNL, 684' FEL.

PREPARED BY:



EXTRACTION OIL & GAS

FIELD DATE: 02-19-14	PAD NAME: WINDER 9-D
DRAWING DATE: 03-20-14	SURFACE LOCATION: NE 1/4 NE 1/4, SEC. 9, T6N, R67W, 6TH P.M.
BY: JLD	CHECKED: DRF
WELD COUNTY, COLORADO	

