

CEMENT BOND LOG
GAMMA RAY
CCL

Company KERR-McGEE OIL & GAS ONSHORE LP
Well INVESTMENT-USX WV 7-17
Field WATTENBERG
County WELD
State COLORADO

Company KERR-McGEE OIL & GAS ONSHORE LP
Well INVESTMENT-USX WV 7-17
Field WATTENBERG
County WELD State COLORADO

Location: SHL: 1318' FNL & 1313' FEL NE
API # : 05-123-09524

Other Services

SEC 7 TWP 1N RGE 67W

| | | | | |
|------------------------|--------|-----------|-------|------------|
| Permanent Datum | GL | Elevation | 5078' | Elevation |
| Log Measured From | KB 10' | | | K.B. 5088' |
| Drilling Measured From | KB | | | D.F. 5087' |
| | | | | G.L. 5078' |

Date 4-22-2014

| | |
|------------------------|-------------|
| Run Number | TWO |
| Depth Driller | 8350' |
| Depth Logger | 7500' |
| Bottom Logged Interval | 7500' |
| Top Log Interval | 6750' |
| Open Hole Size | 7 7/8 |
| Type Fluid | WATER |
| Density / Viscosity | 1.0 |
| Max. Recorded Temp. | 213 |
| Estimated Cement Top | 7058' |
| Time Well Ready | N/A |
| Time Logger on Bottom | N/A |
| Equipment Number | 5432 |
| Location | GREELEY, CO |
| Recorded By | M. JANDREAU |
| Witnessed By | RON SMITH |

| Borehole Record | | | Tubing Record | | | | |
|-----------------|-----|------|---------------|------|--------|------|----|
| Run Number | Bit | From | To | Size | Weight | From | To |
| ONE | | | | | | | |
| TWO | | | | | | | |

| | | | | |
|-------------------|--------|--------|-----|--------|
| Casing Record | Size | Wgt/Ft | Top | Bottom |
| Surface String | 8 5/8 | 24# | 0 | 253' |
| Prot. String | | | | |
| Production String | 4 1/2" | 11.6# | 0 | 8350' |
| Liner | | | | |

<<< Fold Here >>>

All interpretations are opinions based on inferences from electrical or other measurements and we cannot and do not guarantee the accuracy or correctness of any interpretation, and we shall not, except in the case of gross or willful negligence on our part, be liable or responsible for any loss, costs, damages, or expenses incurred or sustained by anyone resulting from any interpretation made by any of our officers, agents or employees. These interpretations are also subject to our general terms and conditions set out in our current Price Schedule.

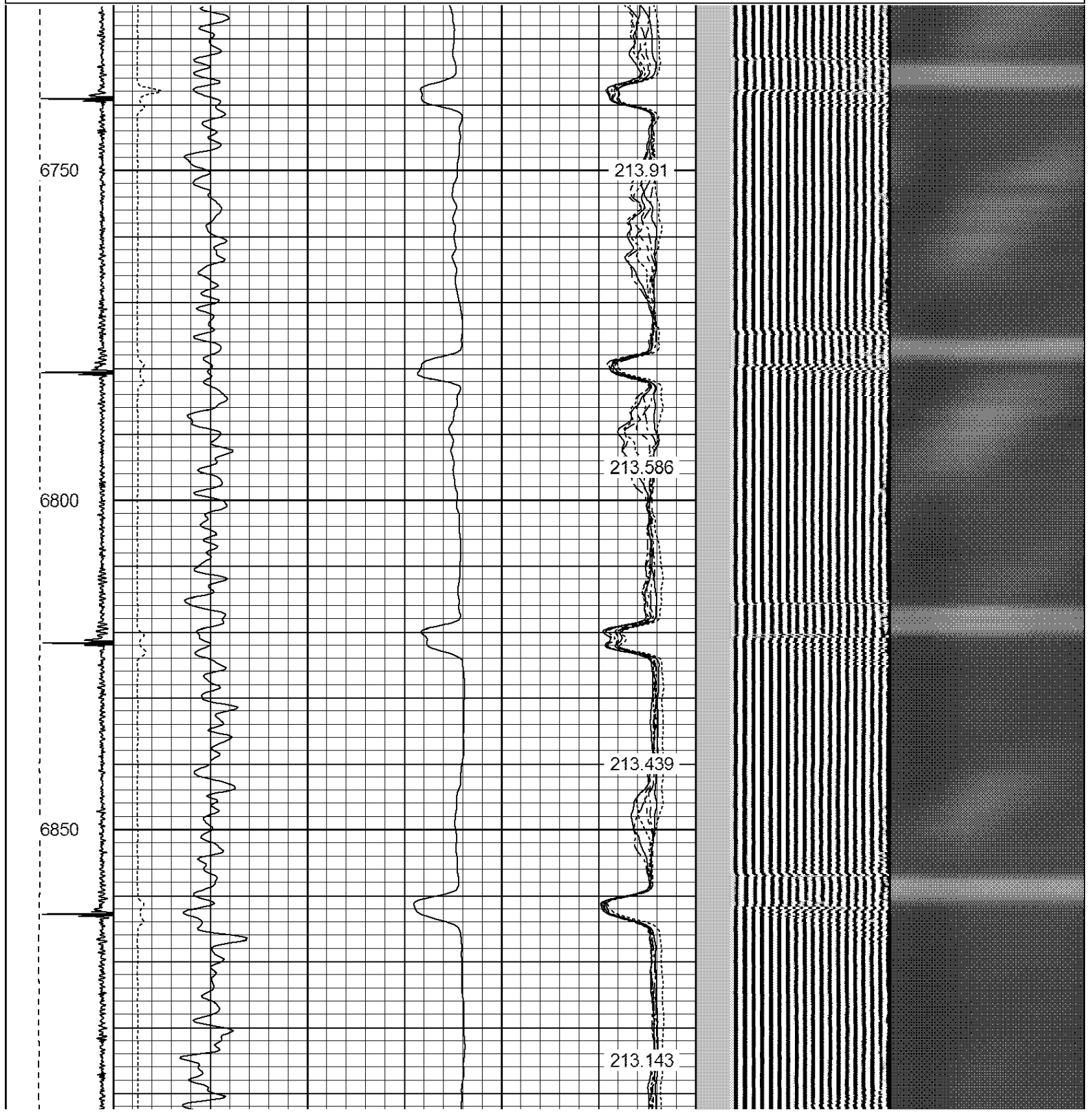
Comments

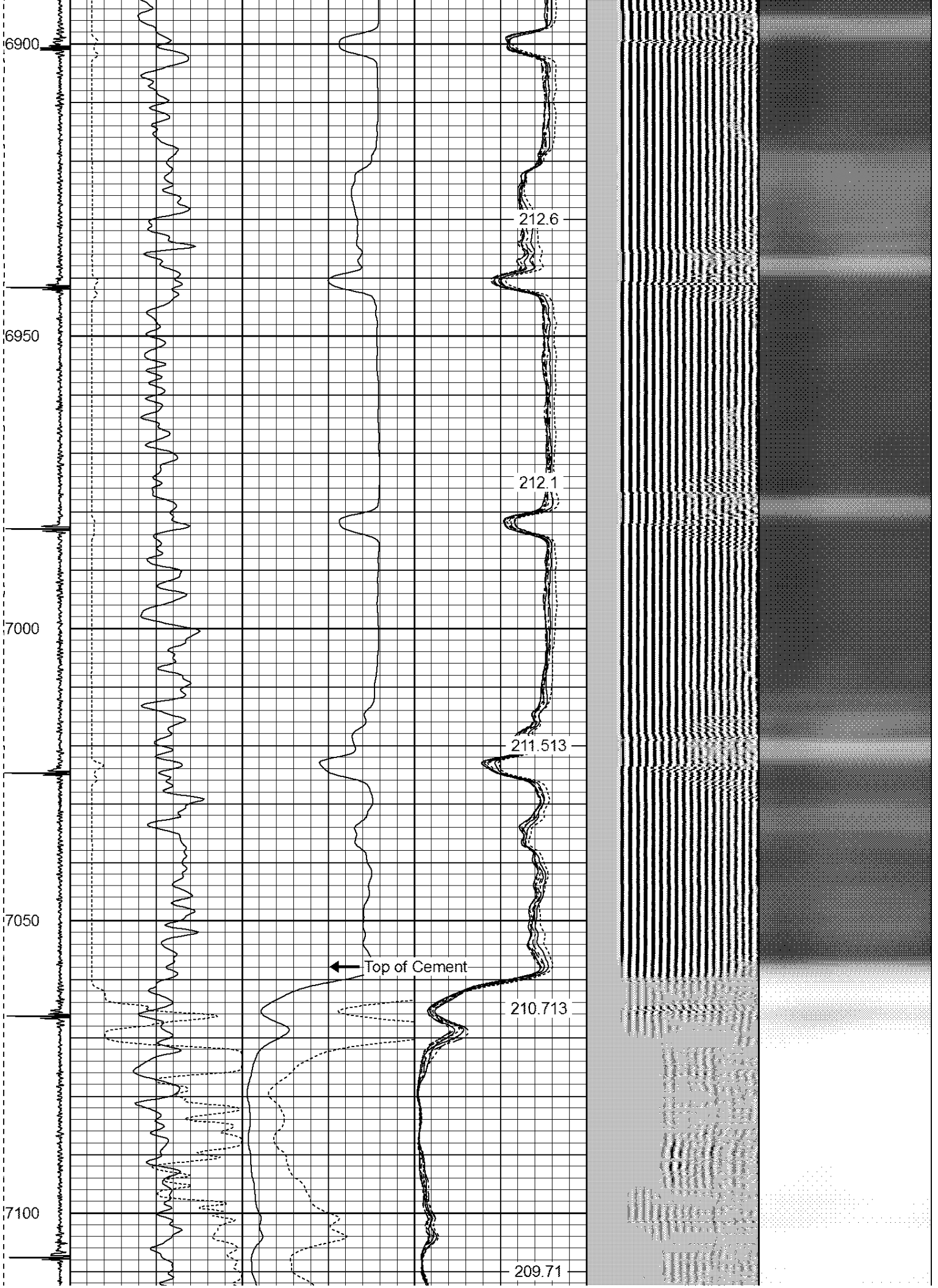
NOT CORRELATED
RAN LOG TO VERIFY CEMENT
THANK YOU FOR USING WARRIOR ENERGY SERVICES!!!!

| Sensor | Offset (ft) | Schematic | Description | Len (ft) | OD (in) | Wt (lb) |
|--------|-------------|-----------|-------------|----------|---------|---------|
| CENT | 18.08 | | | | | |

| | | | | | | |
|--|-------|--|--|------|------|-------|
| | | | PTS275 | 2.83 | 2.75 | |
| HEADVOLT | 15.25 | | | | | |
| RBT | 15.25 | | | | | |
| IntTemp | 13.83 | | | | | |
| WVF3FT | 10.58 | | RBT-Probe (Base) | 8.92 | 2.75 | 90.00 |
| WVFCAL | 10.58 | | Probe Radii Bond Tool with Digital Telemetry | | | |
| WVFS1 | 10.58 | | | | | |
| WVFS2 | 10.58 | | | | | |
| WVFS3 | 10.58 | | | | | |
| WVFS4 | 10.58 | | | | | |
| WVFS5 | 10.58 | | | | | |
| WVFS6 | 10.58 | | | | | |
| WVFS7 | 10.58 | | | | | |
| WVFS8 | 10.58 | | | | | |
| WVF5FT | 9.58 | | | | | |
| CNLSC | 5.00 | | CNT-Probe_B (275) | 3.00 | 2.75 | 40.00 |
| CNSSC | 4.17 | | 6 bow centralizer | | | |
| GR | 3.33 | | | | | |
| GR | 2.54 | | | | | |
| | | | GR-Probe275 (030606) | 3.33 | 2.75 | 57.00 |
| CCL | 0.00 | | 275 | | | |
| Dataset: investment usx vv 7-17.db: field/well/run1/pass6 Total Length: 18.08 ft Total Weight: 187.00 lb O.D. 2.75 in | | | | | | |

| | | | | | | | | | | | | | | | | | |
|----------|-----|-----|-----|-----------|-----|---|------------|-----|---|---------|-----|-----|-----|------|---|------------|-----|
| -9 | CCL | 1 | 200 | TT (usec) | 800 | 0 | AMP (mV) | 100 | 0 | AMPS1 | 100 | 200 | VDL | 1200 | 1 | Cement Map | 8 |
| LSPD | | | 0 | GR (GAPI) | 200 | 0 | AMPx5 (mV) | 20 | 0 | AMPS2 | 100 | | | | 1 | | 100 |
| (ft/min) | | | 200 | GR (GAPI) | 400 | | | | 0 | AMPS4 | 100 | | | | | | |
| 0 | | 250 | | | | | | | 0 | AMPS5 | 100 | | | | | | |
| | | | | | | | | | 0 | AMPS6 | 100 | | | | | | |
| | | | | | | | | | 0 | AMPS7 | 100 | | | | | | |
| | | | | | | | | | 0 | AMPS8 | 100 | | | | | | |
| | | | | | | | | | | IntTemp | | | | | | | |
| | | | | | | | | | | (degF) | | | | | | | |





7150

208.546

7200

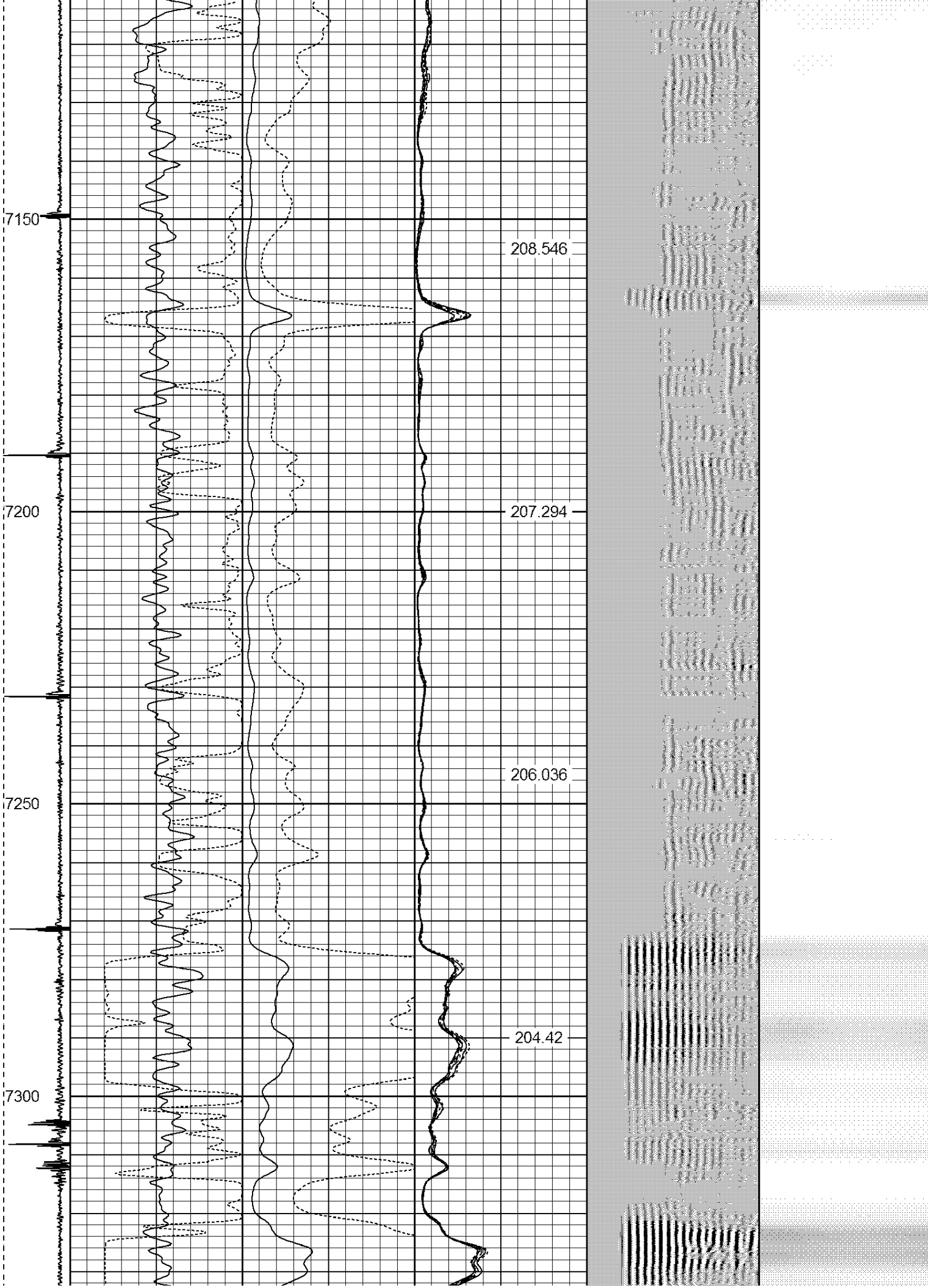
207.294

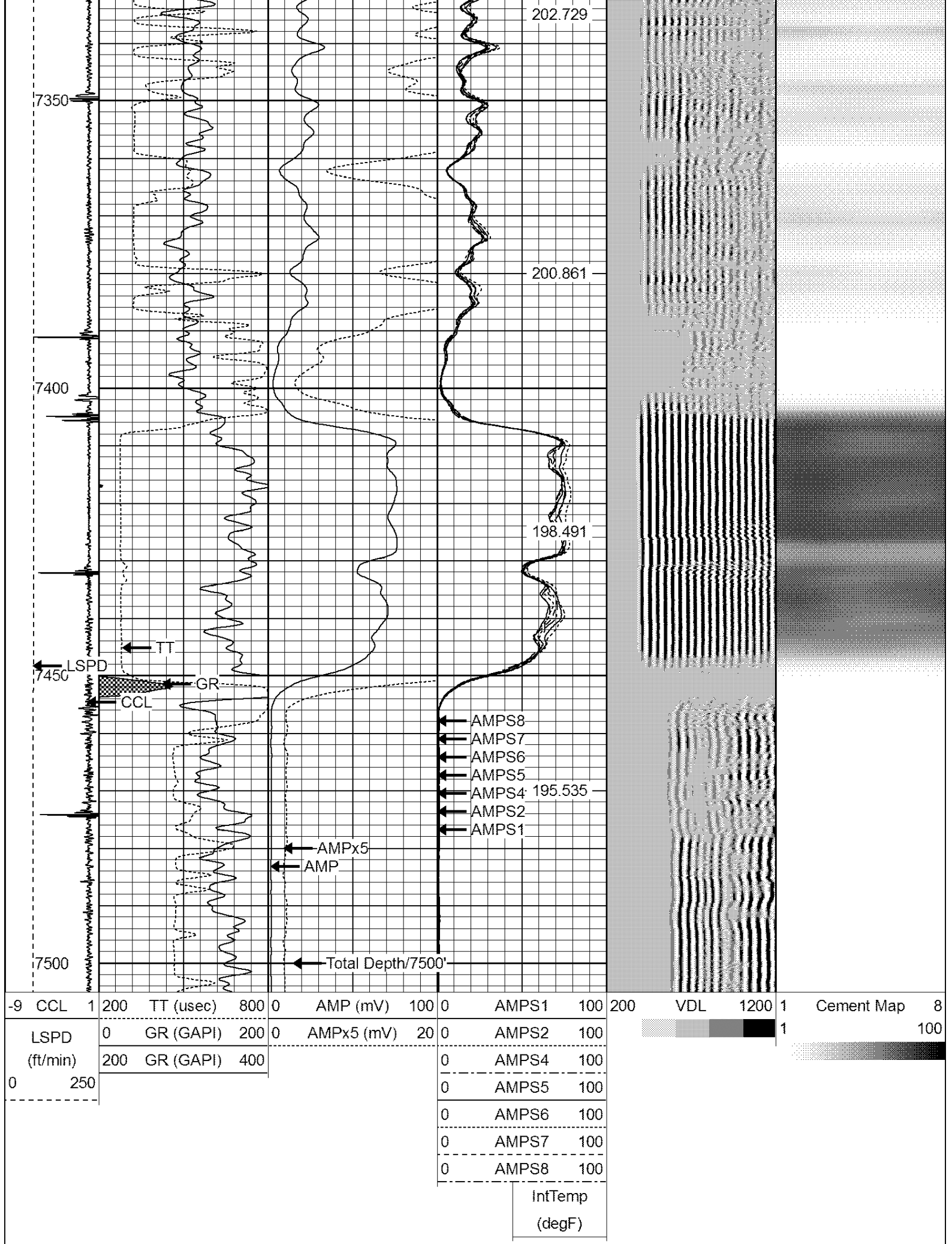
7250

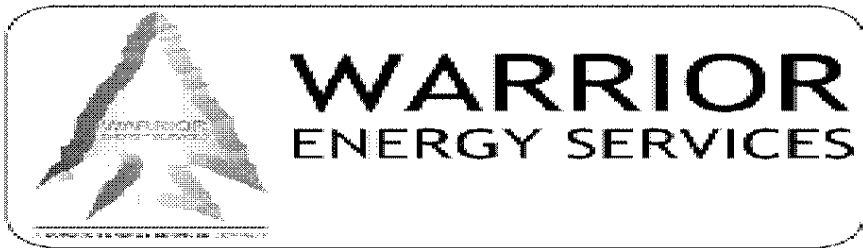
206.036

7300

204.42







Company KERR-McGEE OIL & GAS ONSHORE LP

Well INVESTMENT-USX W 7-17

Field WATTENBERG

County WELD

State COLORADO