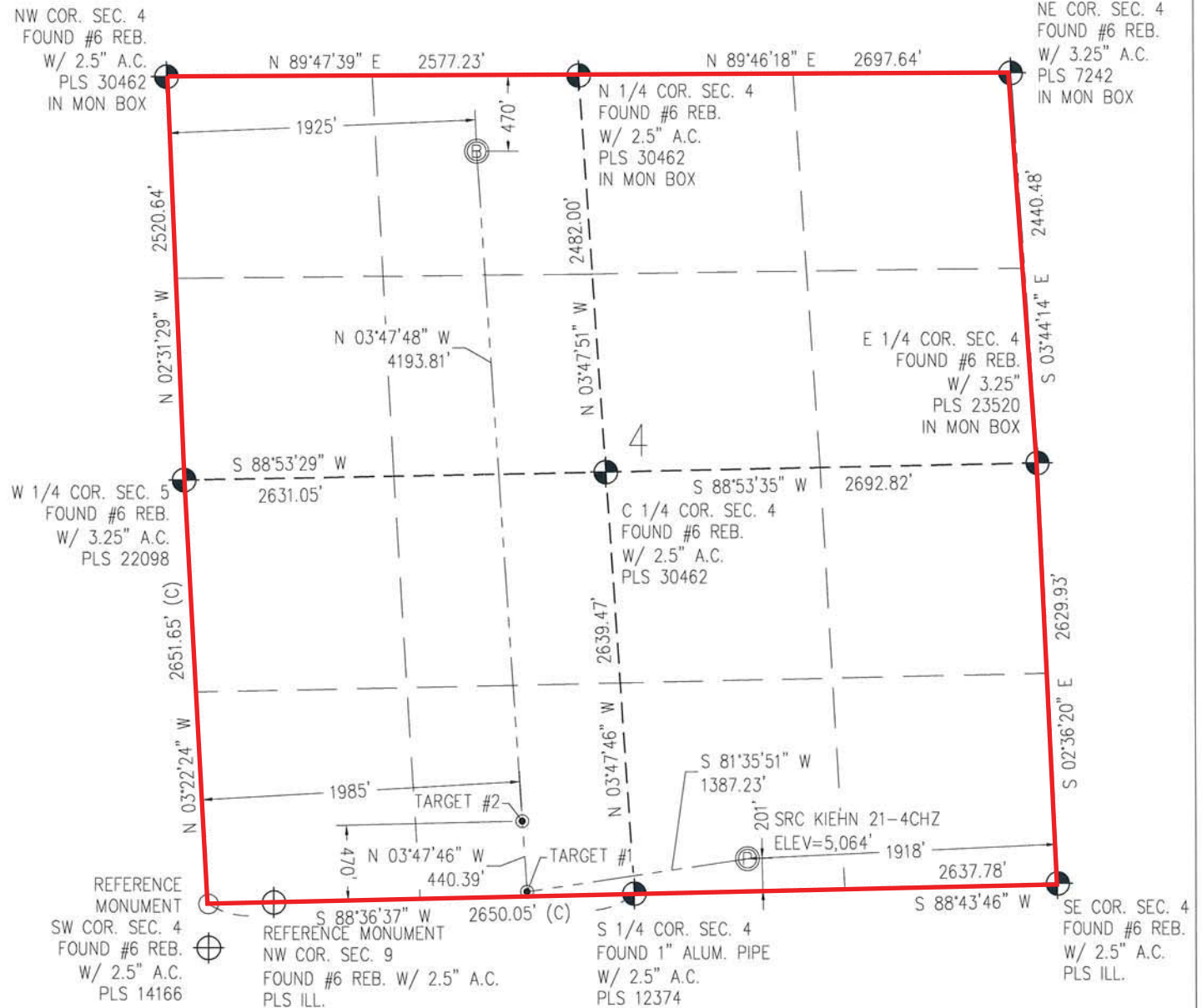


EDITED BY IPT, INC.  
04/30/14, RM

Baseline Engineering Corp. 710 11th Avenue Suite 105 Greeley, Colorado 80631

SECTION 4  
TOWNSHIP 4 NORTH  
RANGE 68 WEST

PROPOSED SPACING UNIT  
THIS MAP DOES NOT REPRESENT A BOUNDARY SURVEY



N IN ACCORDANCE WITH A REQUEST FROM CRAIG RASMUSON - SYNERGY RESOURCES, BASELINE ENGINEERING CORP. HAS DETERMINED THE LOCATION OF THE SRC KIEHN 21-4CHZ TO BE 201' FSL AND 1918' FEL, AS MEASURED AT NINETY (90) DEGREES FROM THE SECTION LINE OF SECTION 4, TOWNSHIP 4 NORTH, RANGE 68 WEST AND THE BOTTOM HOLE LOCATION TO BE 470' FNL AND 1925' FNL OF SECTION 4, TOWNSHIP 4 NORTH, RANGE 68 WEST, 6TH PRINCIPAL MERIDIAN, WELD COUNTY, COLORADO.

I HEREBY CERTIFY THAT THIS WELL LOCATION CERTIFICATE WAS PREPARED BY ME, OR UNDER MY DIRECT SUPERVISION, THAT THE FIELD WORK WAS COMPLETED ON 12/12/2013, THAT IT IS NOT A LAND SURVEY PLAT OR AN IMPROVEMENT SURVEY PLAT, AND THAT IT IS NOT TO BE RELIED UPON FOR ESTABLISHMENT OF FENCE, BUILDING, OR OTHER FUTURE IMPROVEMENT LINES.

0 1000  
Scale 1" = 1000 ft

NOTES:

- 1) LAT/LONG SHOWN ARE BASED ON A GPS OBSERVATION (NAD83).
- 2) BEARINGS SHOWN ARE GRID BEARINGS OF THE COLORADO STATE PLANE COORDINATE SYSTEM, NORTH ZONE, NORTH AMERICAN DATUM 1983/2007.
- 3) GROUND ELEVATIONS ARE BASED ON A GPS OBSERVATION (NAVD 88 DATUM).
- 4) ALL DISTANCES SHOWN ARE FIELD MEASURED UNLESS OTHERWISE NOTED.
- 5) THE NEAREST EXISTING WELL IS: NONE IN SECTION.
- 6) IMPROVEMENTS: SEE LOCATION DRAWING EXHIBIT FOR ALL VISIBLE IMPROVEMENTS WITHIN 600' OF WELL HEAD.
- 7) SURFACE USE: PASTURE/AGRICULTURAL.
- 8) OPERATOR NAME: BRETT BIRCH.

NOTICE: According to Colorado law you MUST commence any legal action based upon any defect in this WLC within three years after you first discover such defect. In no event may any action based upon any defect in this WLC be commenced more than ten years from this said date of the certification show hereon.

SURFACE HOLE:

LATITUDE: 40.335801° N  
LONGITUDE: 105.005783° W  
PDOP: 1.2  
1/4, 1/4: SW1/4SE1/4  
NEAREST PROPERTY LINE: 201' S

BOTTOM HOLE:

LATITUDE: 40.347960° N  
LONGITUDE: 105.011717° W

TARGET #1:

LATITUDE: 40.335266° N  
LONGITUDE: 105.010708° W

TARGET #2:

LATITUDE: 40.336472° N  
LONGITUDE: 105.010804° W

LEGEND

- FOUND/SET SURVEY MONUMENT PER MONUMENT RECORD EXCEPTIONS NOTED
- CALCULATED SURVEY MONUMENT POSITION
- CALCULATED DIMENSION



AARON A. DEMO Completed  
Professional Land Surveyor Registration No. 38285 1/8/2014  
State of Colorado  
FOR AND ON BEHALF OF BASELINE ENGINEERING CORP.

PROJECT #: SYN04N68W04-01



05/02/2014

VIA ELECTRONIC TRANSMITTAL

Colorado Oil and Gas Conservation Commission  
Attn: Matt Lepore, Director  
1120 Lincoln Street, Suite 801  
Denver, CO 80203

RE: Rule 318A.e 30-Day Certification Letter

**Thirteen (13) well Kiehn Pad: SWSE Section 4 T4N-R68W, Weld County, Colorado**

SRC Kiehn 21-4CHZ  
SRC Kiehn 21-4NHZ  
SRC Kiehn 22-4CHZ  
SRC Kiehn 22-4NHZ  
SRC Kiehn 31-4CHZ  
SRC Kiehn 31-4NHZ  
SRC Kiehn 32-4CHZ  
SRC Kiehn 32-4NHZ  
SRC Kiehn A-4CHZ  
SRC Kiehn A-4NHZ  
SRC Kiehn C-4CHZ  
SRC Kiehn C-4NHZ  
SRC Kiehn N-4NHZ

Dear Mr. Lepore,

Synergy Resources Corporation (Synergy) is planning to drill the captioned wells in accordance with the provisions of COGCC Rule 318A.e.

Synergy's proposed wellbore spacing unit consists of All of Sec. 4-T4N-R68W.

Synergy is the only owner within the proposed wellbore spacing unit, therefore Synergy attests that no notice letters are required under COGCC Rule 318A.e.(6). Synergy respectfully requests that the Director approve the wells. Should you have any questions or concerns please contact the undersigned at 720-420-5700.

Sincerely,

Clayton L. Doke  
Senior Engineer  
Integrated Petroleum Technologies, Inc.  
Consultants to Synergy Resources Corporation