

1625 Broadway
Suite 2000
Denver, CO 80202

Tel: 303.228.4000
Fax: 303.228.4280
www.nobleenergyinc.com



4/15/2014

Colorado Oil and Gas Conservation Commission
The Chancery Building
1120 Lincoln Street, Suite 801
Denver, CO 80203
Attn: Mr. Matt Lepore, Director

RE: Heartland G25-73-1HN
SESE, Township 4 North, Range 65 West, 6th P.M.
Weld County, Colorado

Dear Director:

Noble Energy, Inc. ("NEI") is planning to drill the captioned boundary well in accordance with the provisions of COGCC Rule 318A.e.

NEI's proposed wellbore spacing unit consists of the
S/2SE/4 Sec. 13 , T4N, R65W, E/2 Sec. 24, T4N, R65W, E/2 Sec. 25 T4N, R65W creating a 717-acre wellbore
spacing unit for the Niobrara formation. NEI is the only owner within the proposed wellbore spacing unit, therefore
NEI hereby attests that no notice letters are required under COGCC Rule 318A(I).e.(6).

Enclosed are copies of the following documents to assist you in your review and approval of NEI's proposed APD for
the captioned well:

- Map & plat illustrating proposed wellbore spacing unit.

Thank you for your attention to the enclosed. NEI respectfully requests that the COGCC review the enclosed
information and approve the Application for Permit to Drill the captioned well.

Sincerely,

Andrea Rawson
Regulatory Analyst
Noble Energy Inc.

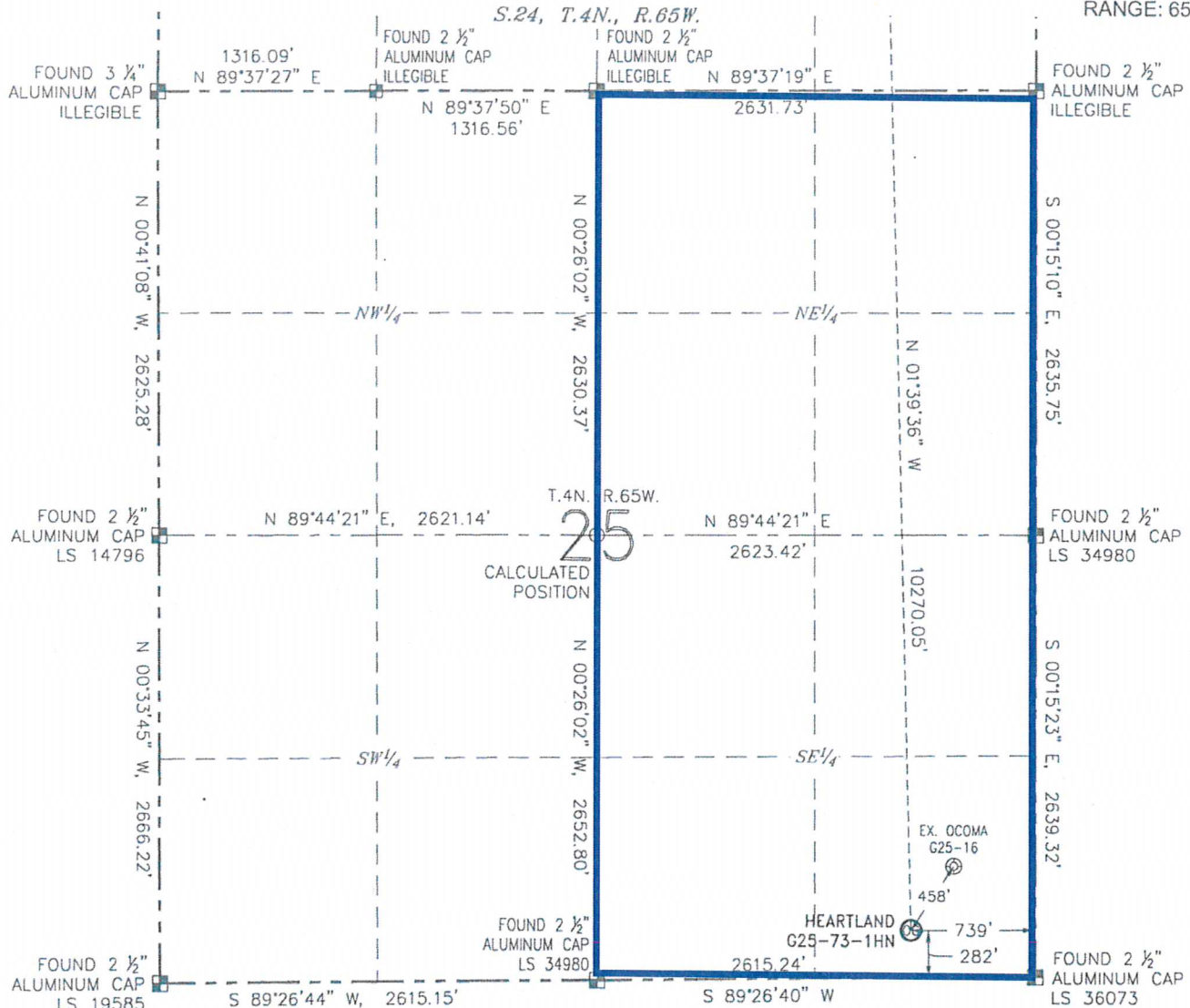
WELL LOCATION CERTIFICATE

HEARTLAND G25-73-1HN

(SHEET 1 OF 2)

SECTION: 25
TOWNSHIP: 4N
RANGE: 65W

S.24, T.4N., R.65W.



NOTES:

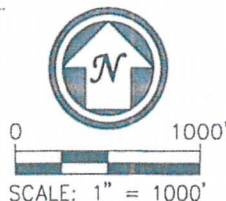
1. BEARINGS ARE GRID BEARINGS OF THE COLORADO STATE PLANE COORDINATE SYSTEM, NORTH ZONE, NAD 83. THE LINEAL DIMENSIONS SHOWN HEREON ARE BASED UPON THE "U.S. SURVEY FOOT".
2. GROUND ELEVATIONS ARE BASED UPON NGS OPUS SOLUTION NAVD 88 DATUM COMPUTED USING GEOID09.
3. IMPROVEMENTS: SEE LOCATION DRAWING FOR ALL VISIBLE IMPROVEMENTS WITHIN 500' OF THE DISTURBED AREA.
4. SURFACE USE: RANGELAND.
5. INSTRUMENT OPERATOR: ANTONIO SMITH.
6. THE NEAREST EXISTING WELL: OCOMA G25-16, 458' NE.

IN ACCORDANCE WITH A REQUEST FROM MATT VERBIT WITH NOBLE ENERGY INC., R&R ENGINEERS-SURVEYORS, INC. HAS DETERMINED THE SURFACE HOLE LOCATION OF THE HEARTLAND G25-73-1HN WELL TO BE 282' FROM THE SOUTH LINE AND 739' FROM THE EAST LINE AS MEASURED AT RIGHT ANGLES FROM THE SECTION LINES OF SECTION 25, TOWNSHIP 4 NORTH, RANGE 65 WEST, AND THE BOTTOM HOLE LOCATION TO BE 75' FROM THE NORTH LINE AND 990' FROM THE EAST LINE AS MEASURED AT RIGHT ANGLES FROM THE SECTION LINES OF SECTION 24, TOWNSHIP 4 NORTH, RANGE 65 WEST OF THE 6TH PRINCIPAL MERIDIAN, WELD COUNTY, COLORADO.

I HEREBY CERTIFY THAT THIS WELL LOCATION CERTIFICATE WAS PREPARED BY ME, OR UNDER MY DIRECT SUPERVISION, THAT THE FIELD WORK WAS COMPLETED ON 09/30/2013, FOR AND ON BEHALF OF NOBLE ENERGY INC., THAT IT IS NOT A LAND SURVEY PLAT OR AN IMPROVEMENT SURVEY PLAT, AND THAT IT IS NOT TO BE RELIED UPON FOR ESTABLISHMENT OF FENCES, BUILDINGS, OR OTHER FUTURE IMPROVEMENT LINES.

NEAREST CULTURAL ITEMS:

BUILDING:	1754' E
BUILDING UNIT:	1652' E
HIGH OCCUPANCY BUILDING UNIT:	5280' +
DESIGNATED OUTSIDE ACTIVITY AREA:	5280' +
PUBLIC ROAD (CR 49):	719' E
ABOVEGROUND UTILITY:	252' S
RAILROAD:	5280' +
PROPERTY LINE:	282' S



LEGEND

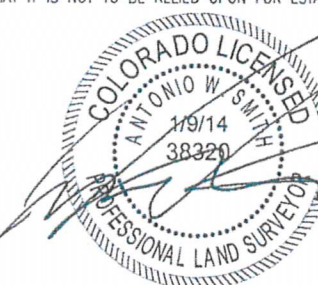
- ⊗ PROPOSED WELL
- ⊙ BOTTOM HOLE
- ⊙ CALCULATED POSITION
- ⊗ EXISTING WELL
- ⊗ FOUND MONUMENT

SURFACE HOLE LOCATION

LATITUDE: N 40.27673'
LONGITUDE: W 104.60499'
PDOP: 1.6
ELEVATION: 4835'
¼-¼: SE¼SE¼

BOTTOM HOLE LOCATION

LATITUDE: N 40.30492'
LONGITUDE: W 104.60568'

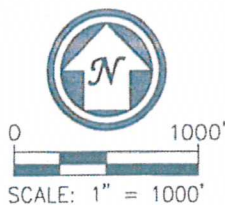
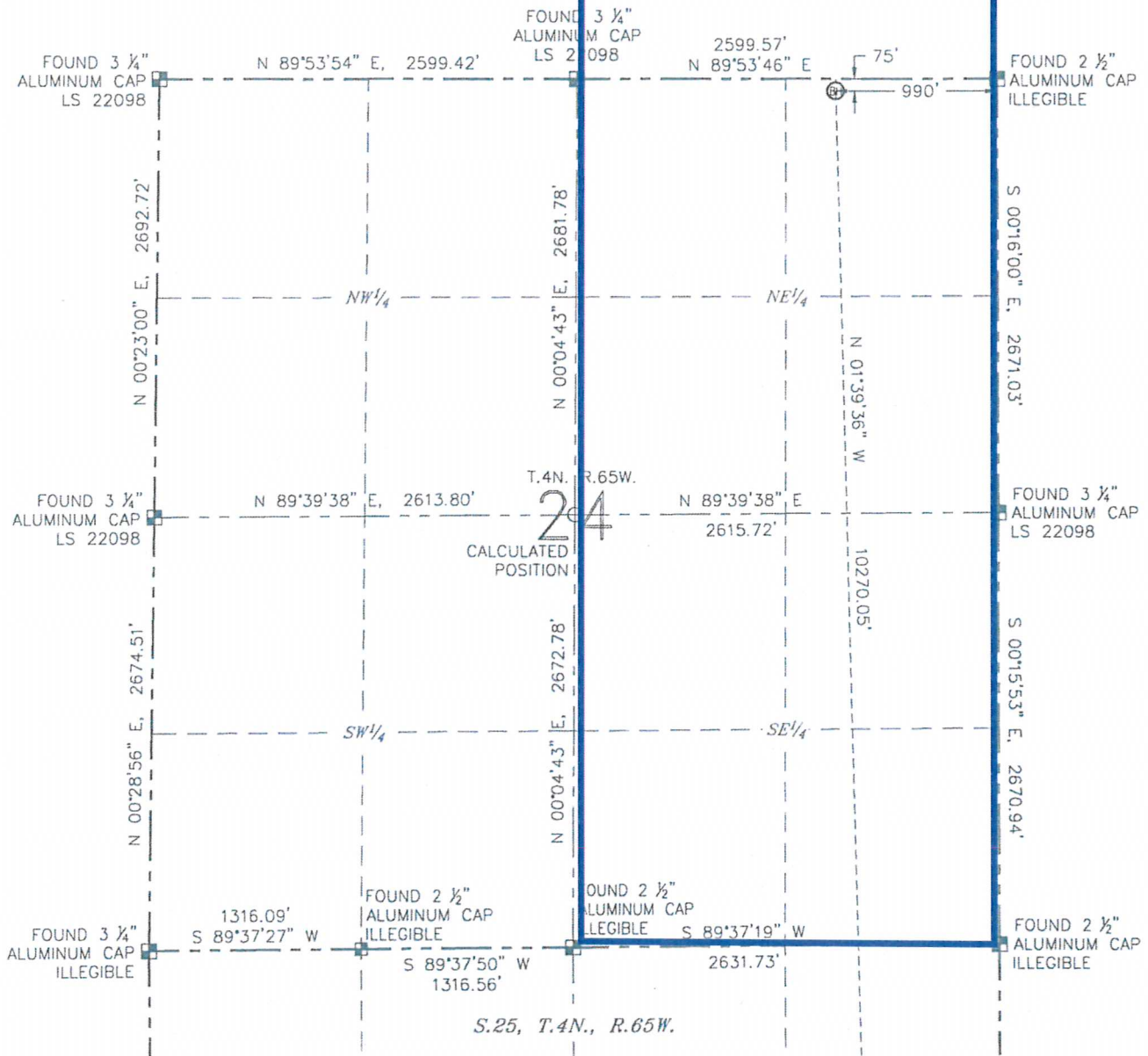


ANTONIO W. SMITH, PLS 38320
FOR AND ON BEHALF OF R&R ENGINEERS-SURVEYORS, INC. DATE: 01/09/2014
JOB NO.: NE13301

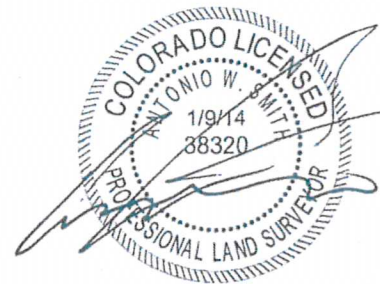
WELL LOCATION CERTIFICATE

HEARTLAND G25-73-1HN
(SHEET 2 OF 2)

SECTION: 25
TOWNSHIP: 4N
RANGE: 65W



- LEGEND**
- ⊗ PROPOSED WELL
 - ⊙ EXISTING WELL
 - ⊠ FOUND MONUMENT
 - CALCULATED POSITION



ANTONIO W. SMITH, PLS 38320
FOR AND ON BEHALF OF R&R ENGINEERS-SURVEYORS, INC. DATE: 01/09/2014
JOB NO.: NE13301

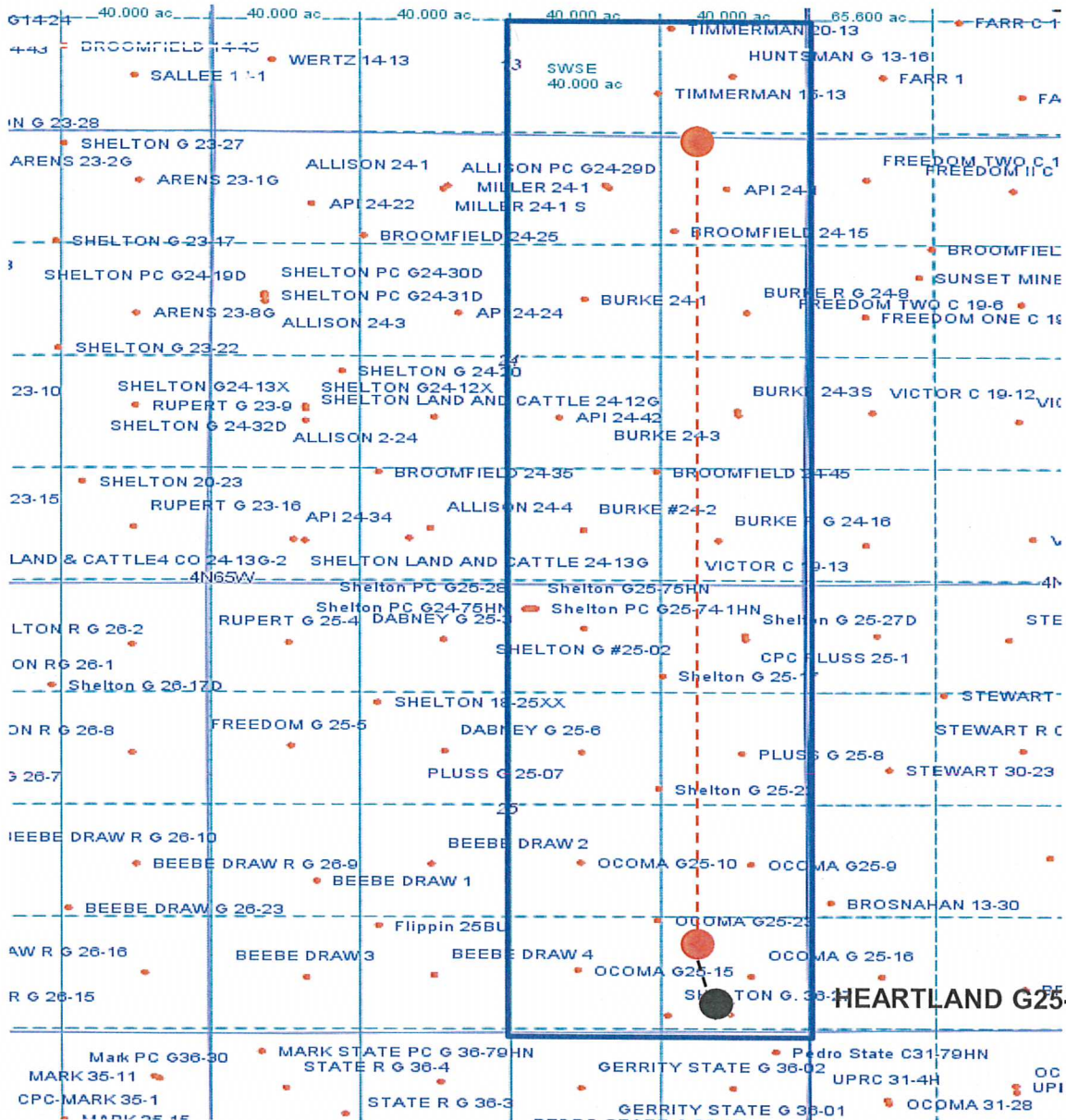
HEARTLAND G25-73-1HN

Proposed Spacing Unit – Noble Energy, Inc.

S/2SE/4 Section 13, Township 4 North, Range 65 West

E/2 Section 24, Township 4 North, Range 65 West

E/2 Section 25, Township 4 North, Range 65 West



HEARTLAND G25-73-1HN

Legend



Proposed 716.58 acre spacing unit

Bottom Hole Location