



NIGHTHAWK PRODUCTION LLC

Snow King 13-33
SW SW Sec 11, T6S, R54W
LINCOLN COUNTY, COLORADO
API No. 05-73-06582-00

ELEVATION

R.B. 5326'

G.L. 5,311

KB 15'

BHT 214'

BHP 1765

Spud date: 03/14/14

TD date: 03/26/14

Completion 04/10/14

Surface location

Lat: 39.477500

Long: -103.45105

312' FSL 737' FWL

Bottom hole location

626' FSL 801' FWL

Geological tops:

Niobrara 3672 Cherokee 7510

Dakota 4669 Atoka 7707

Stone Correl 6016 Morrow 7895

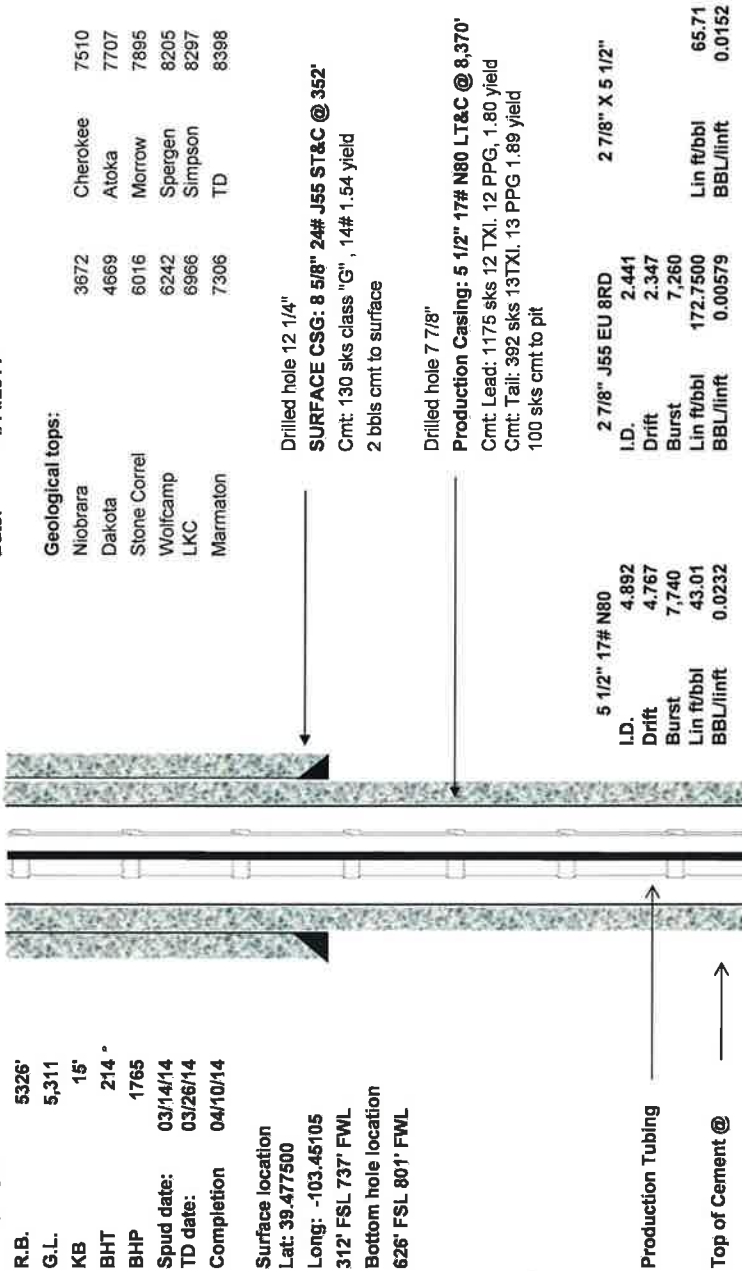
Wolfcamp 6242 Spergin 8205

LKC 6966 Simpson 8297

Marmaton 7306 TD 8398

Prepared By: Harold Mayland
Date: 4/14/2014

Not to scale



TUBING	Qty	Length	Depth in hole
Avg Jt length		31.77	
KB difference			13.00'
Stretch			2.33'
2 7/8" EU 8RD J55 tbg	252	8,005.44'	8,020.77'
TAC			3.17'
2 7/8" EU 8RD J55 tbg	6	189.60'	8,023.94'
Seating Nipple			1.90'
2 7/8" X 4' Perforated pup jt			4.00'
2 7/8" EU 8RD J55 tbg	1	31.64'	8,215.44'
2 7/8" X 6' Perforated pup jt			6.00'
2 7/8" X 2 3/8" X over			0.50'
2 3/8" TXN nipple 1.875" x 1.791 No go			1.00'
2 3/8" X 8' pup jt			8.00'
2 3/8" tap bull plug.			0.50'
Total Jts	259		
Rods			
Polish Rod 1 1/2" x 30' w/1 3/4" x 16' Liner			
Pony rod 7/8" X 6' MMS	1		
Pony rod 7/8" X 4' MMS	1		
Pony rod 7/8" X 2' MMS	1		
7/8" Rods MMS Guided 4/per	123		
3/4" Rods MMS Guided 4/per	129		
3/4" Rods MMS	63		
1 1/2" K-Bars	12		
Pony rod 1" x 2'	1		
Pump 2 1/2" x 2" x 26" RHWBC BNC 2 Stg			

NOTE:

Spergen
8,248'-8290'

PBTD @ 8,315'

Collar @ 8,371'

Shoe @ 8,370'

TD 8,398'