

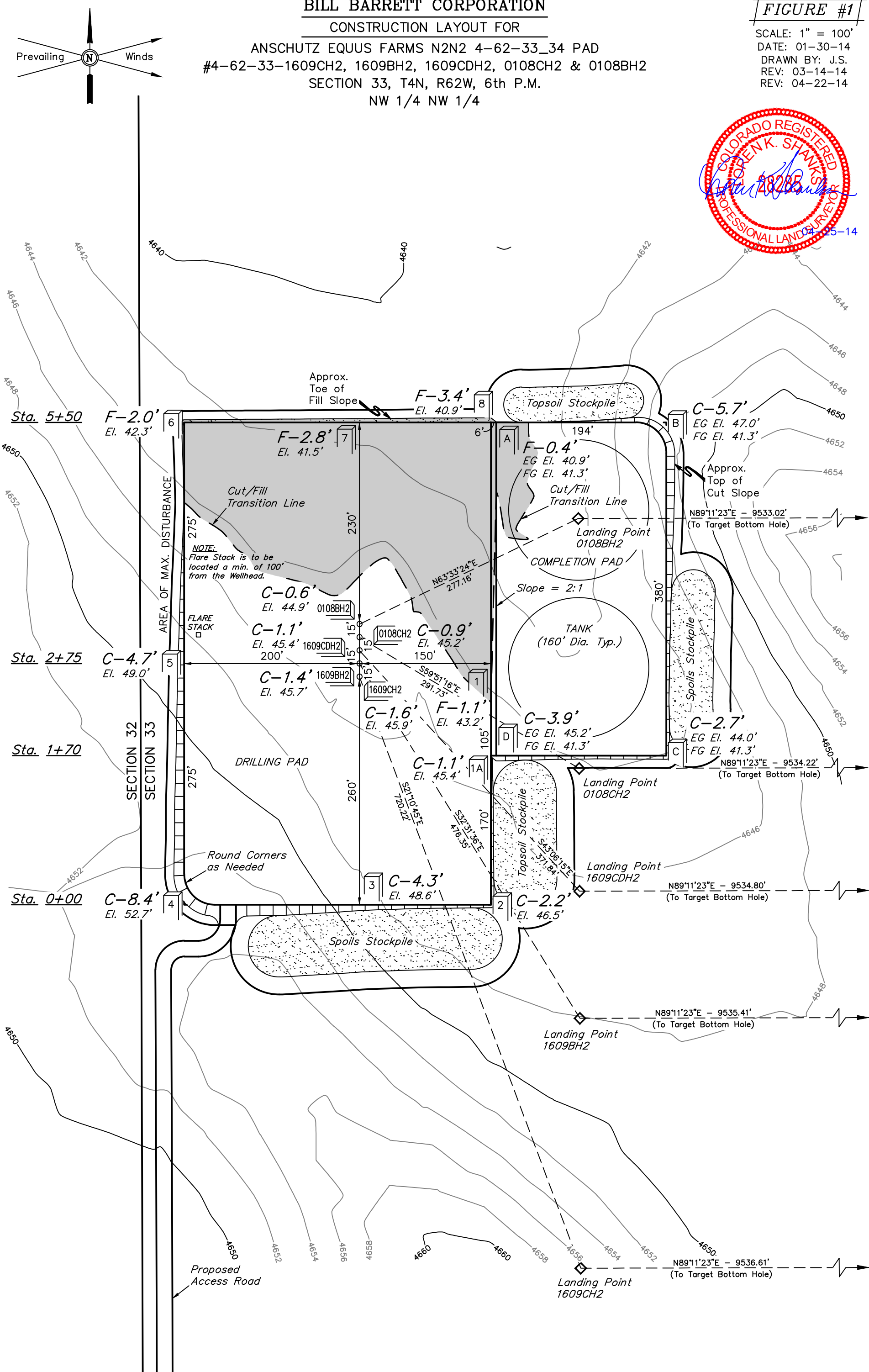
BILL BARRETT CORPORATION

CONSTRUCTION LAYOUT FOR

ANSCHUTZ EQUUS FARMS N2N2 4-62-33_34 PAD
#4-62-33-1609CH2, 1609BH2, 1609CDH2, 0108CH2 & 0108BH2
SECTION 33, T4N, R62W, 6th P.M.
NW 1/4 NW 1/4

FIGURE #1

SCALE: 1" = 100'
DATE: 01-30-14
DRAWN BY: J.S.
REV: 03-14-14
REV: 04-22-14



Elev. Ungraded Ground At #4-62-33-1609BH2 Loc. Stake = 4645.7'
FINISHED GRADE ELEV. AT #4-62-33-1609BH2 LOC. STAKE = 4644.3'

UINTAH ENGINEERING & LAND SURVEYING
85 So. 200 East * Vernal, Utah 84078 * (435) 789-1017