



Scale: 5" / 100'
Measured Depth Log

Well Name	BADDING 36C-35HZ		
Location	SEC.26-T2N-R66W		
State	COLORADO	County	WELD
Country	USA		
API Number	05-123-38409	Rig Number	XTREME 8
Region	DJ BASIN	AFE #	2086546
Spud Date	2/22/2014	Field	WATTENBERG
		Drilling Completed	2/6/2014
Surface Coordinates	350' FSL, 1979' FEL LAT 40.102987 LON -104.741943		
Bottom Hole Coordinates	1' FSL, 2342' FEL LAT 40.087346 LON -104.743207		
Ground Elevation	5112'	K.B. Elevation	5146'
Logged Interval	7065'	To	13715'
Formation	CODELL	Total Depth	6650'
Type of Drilling Fluid	FW LSND		

Company ANADARKO PE
Address 1099 18th, Suite

Name JOSH GARRET
Company ANADARKO
Address 1099 18th, Suite

LOGGERS

- UNKNOWN

ANHYDRITE

BENTONITE

BRECCIA

CHALK

CEMENT

CHERT

CLAY CHOKE SAND

CLAYSTONE
-

Operator

PETROLEUM COMPANY

1800 Denver, CO 80202

Geologist

1800 Denver, CO 80202

Other

ROBERT DAVIS
PAUL KRUGER

Rock Types

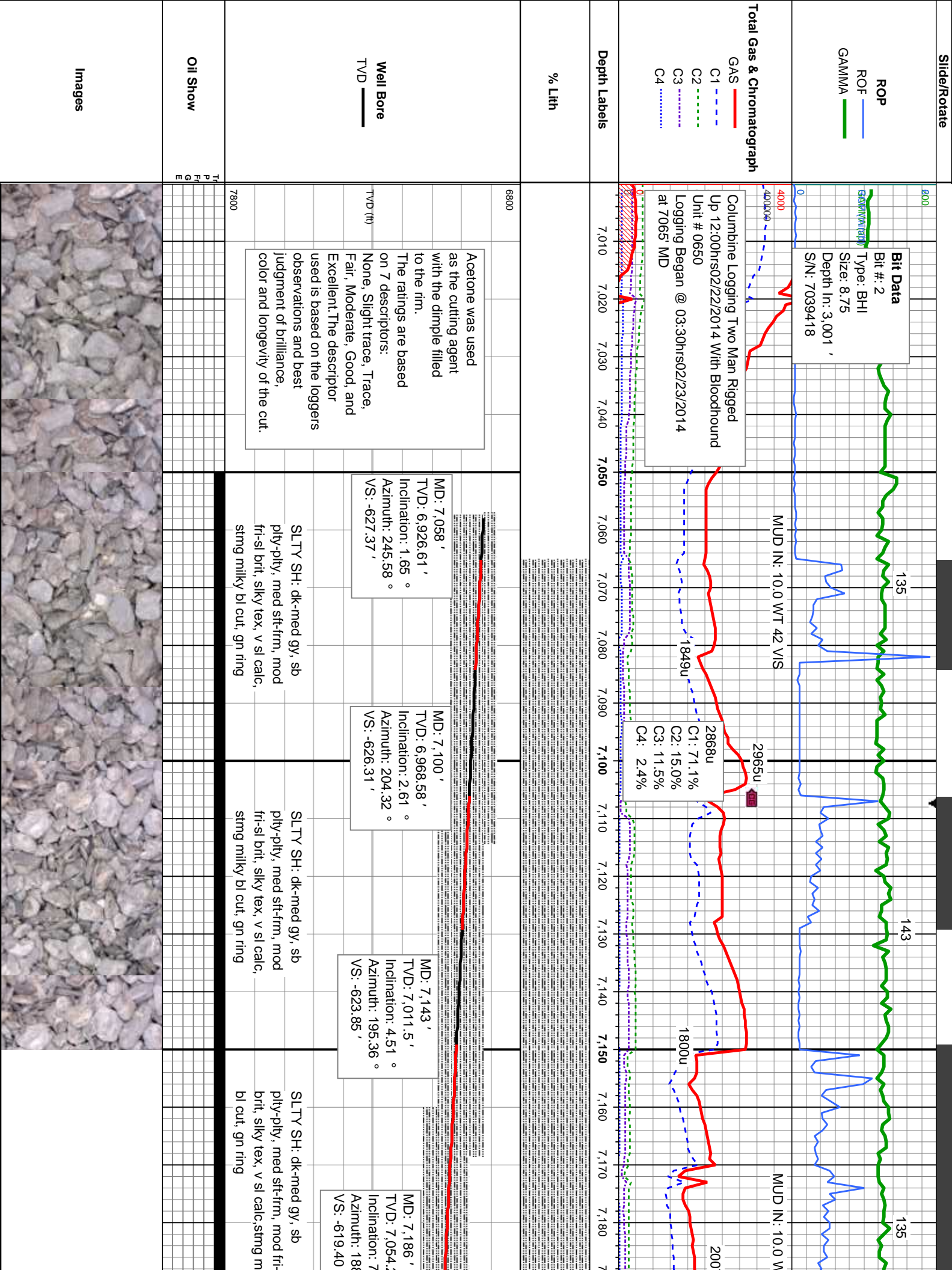
CONGLOMERATE	MARLSTONE	SHALY SANDSTONE
DOLomite	METAMORPHIC	SHALY SILTSTONE
DOLomite	NO SAMPLE	SILTY SHALE
DOLomite Limestone	SALT	SILTSTONE
GRANITE	SANDSTONE	TILL
Gypsum	SALT-PEPPER SAND	TUFF
igneous	SHALE	WELDED TUFF
SIDERITE or LIMONITE	SHALE COLORED	
Limestone	SHALE GRAY	

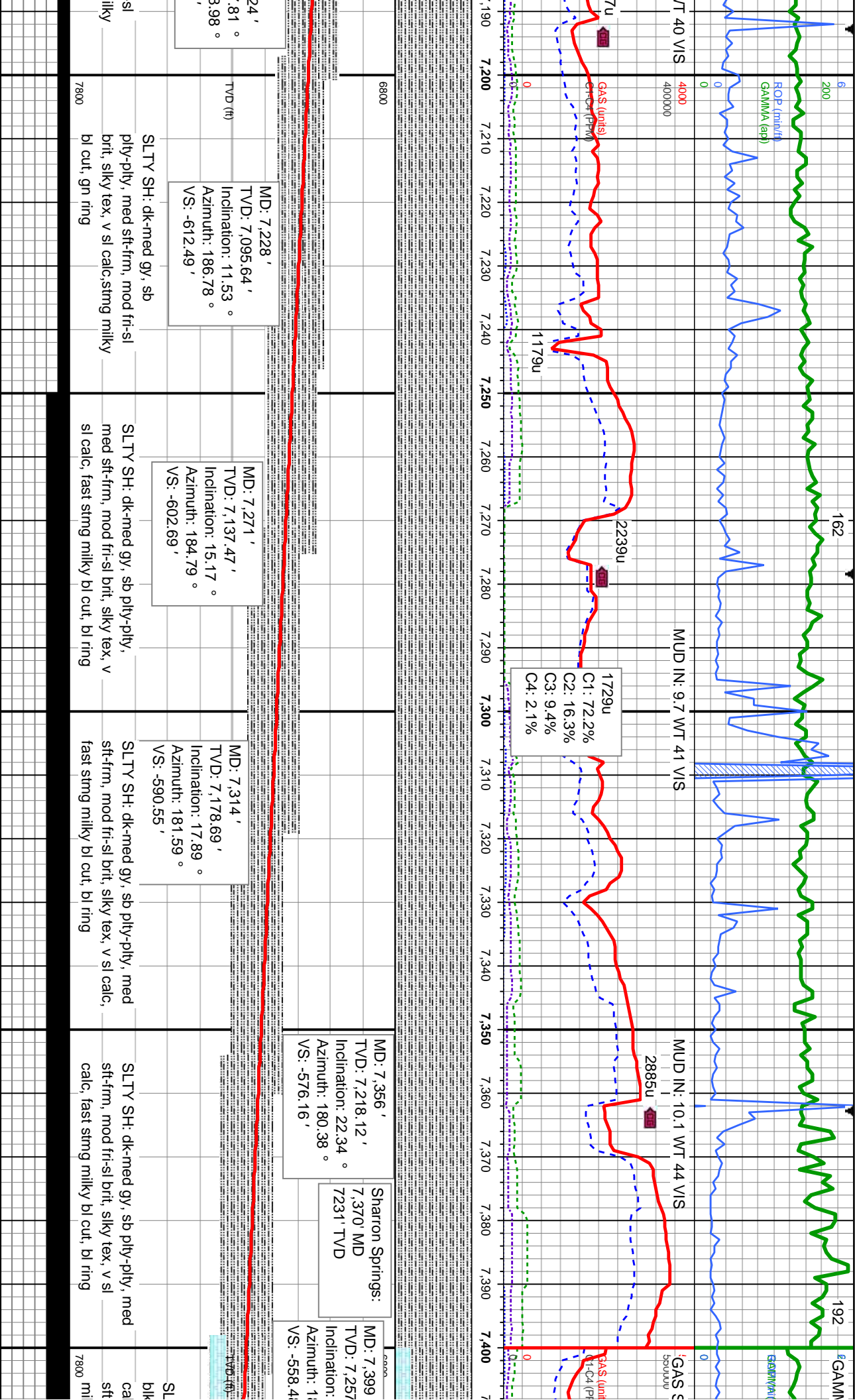
Accessories

Fossils	GASTROPOD	ARGILLITE GRAIN	HEAVY MINERAL
INOCERAMUS	B BENTONITE	K KAOLIN	ANHYDRITE STRINGER
ALGAE	O OOLITE	BITUMENOUS SUBSTANCE	BENTONITE STRINGER
AMPHIPORA	O OSTRACOD	BRECCIA FRAGMENTS	COAL STRINGER
BELEMNITE	P PELECYPOD	CALCAREOUS	DOLOMITE STRINGER
BIOCLASTIC	P PELLET	CARBONACEOUS FLAKES	GYPSUM STRINGER
BRACHIOPOD	P PISOLITE	CHERT	LIMESTONE STRINGER
BRYOZOA	P PLANT REMAINS	CHERT	MARLSTONE (CALC) STRG
CEPHALOPOD	P PLANT SPORES	COAL - THIN BEDS	MARLSTONE (DOL) STRG
CORAL	S SCAPHOPOD	DOLOMITE	SANDSTONE STRINGER
CRINOID	F FELDSPAR	F FERRUGINOUS PELLET	SILTSTONE STRINGER
ECHINOID	F FERRUGINOUS	T TUFFACEOUS	
F FISH	A ANHYDRITIC	G GLAUCONITE	
FORAMINIFERA	A ARGILLACEOUS	G GYPSIFEROUS	
F FOSSIL			Stringer

Other Symbols

Oil Show	P PINPOINT	DST INTERVAL	WIRELINE TESTED - LEFT	E EARTHY
V VUGGY	FAULT	WIRELINE TESTED - RT	FINELY XLN	
Engineering	FORMATION TOP	GAS SHOW	DRILL STEM TEST	G GRAINSTONE
EVEN	OIL SHOW	MN DEPTH	MN DEPTH	L LITHOGRAPHIC
QUESTIONABLE	BIT			M MICROXLN
SPOTTED STAINING	CONNECTION (UP)			M MUDSTONE
		Rounding		
	CONNECTION (DOWN)	A ANGULAR	PS PACKSTONE	
Porosity	CONNECTION GAS	NORMAL FAULT	R ROUNDED	W WACKESTONE
E EARTHY	CONNECTION GAS (LEFT)	OVERTURNED STRATA	B SUBANG	
F FENESTRAL	TRIP GAS	REVERSE FAULT	P SUBRND	
F FRACTURE	TRIP GAS (LEFT)	CASING		Sorting
INTERCRYSTALLINE	DOWN TIME GAS	SIDEWALL CORE (LEFT)	M MODERATE	
INTERCRYSTALLINE	DOWN TIME GAS (LEFT)	SIDEWALL CORE (RIGHT)	P POOR	
MOLDIC	CORE - LOST	SLIDE	W WELL	
ORGANIC	CORE - RECOVERED	SURVEY	CRYPTOXLN	
		Textures		





MA SCALE CHANGE

234

02/23/14

6

250

MINDEPTH

124

ROP (in/hr)
GAMMA (api)

SCALE CHANGE

MUD IN: 10.0 WT 44 VIS

MUD IN: 10.0 WT 44 VIS

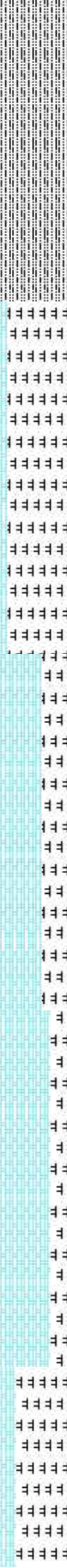
5500
550000

3749u

3678u
C1: 77.6%
C2: 15.4%
C3: 5.8%
C4: 1.2%

Gas (units)
Cl (api)

7,410 7,420 7,430 7,440 7,450 7,460 7,470 7,480 7,490 7,500 7,510 7,520 7,530 7,540 7,550 7,560 7,570 7,580 7,590 7,600 7,610 7,620



Niobrara:

7,433' MD
7,287' TVD

MD: 7,441' TVD: 7,294.15' Inclination: 30.86° Azimuth: 180.59° VS: -538.43'

MD: 7,484' TVD: 7,330.18' Inclination: 35.25° Azimuth: 179.90° VS: -127.45'

Niobrara B Chalk:

7,526' MD
7,363' TVD

MD: 7,526' TVD: 7,367.51' Inclination: 39.79° Azimuth: 180.29° VS: -101.94'

MD: 7,569' TVD: 7,395.49' Inclination: 43.98° Azimuth: 179.59° VS: -73.29'

MD: 7,612' TVD: 7,425.08' Inclination: 49.03° Azimuth: 179.39° VS: -42.16'

Niobrara

7,621' MD
7,433' TVD

TVD SCALE CHANGE

TY SH: dk-med gy-gy brn, sb pily-sb
gy, med sft-frn, mod fr-sl brit, v sl
c, v silty, bent, CHK: med gy, sb blkly,
v calc, wxy-rthy tex, r bent, fast stmg
milky bl cut, bl ring

MRLST: dk-med gy-gy brn, sb blkly, med
sft-frn, calc, silty tex, CHK: med gy-gy brn,
sb blkly, sft, v calc, wxy-rthy tex, fast stmg
milky bl cut, bl ring

CHK: med gy-gy brn, sb blkly, sft, v calc,
wxy-rthy tex, MRLST: dk-med gy-gy brn,
sb blkly, med sft-frn, calc, silty tex, fast
stmg milky bl cut, bl ring

CHK: med gy-gy brn, sb blkly, sft, v calc,
wxy-rthy tex, MRLST: dk-med gy-gy brn,
sb blkly, med sft-frn, calc, silty tex, fast
stmg milky bl cut, bl ring

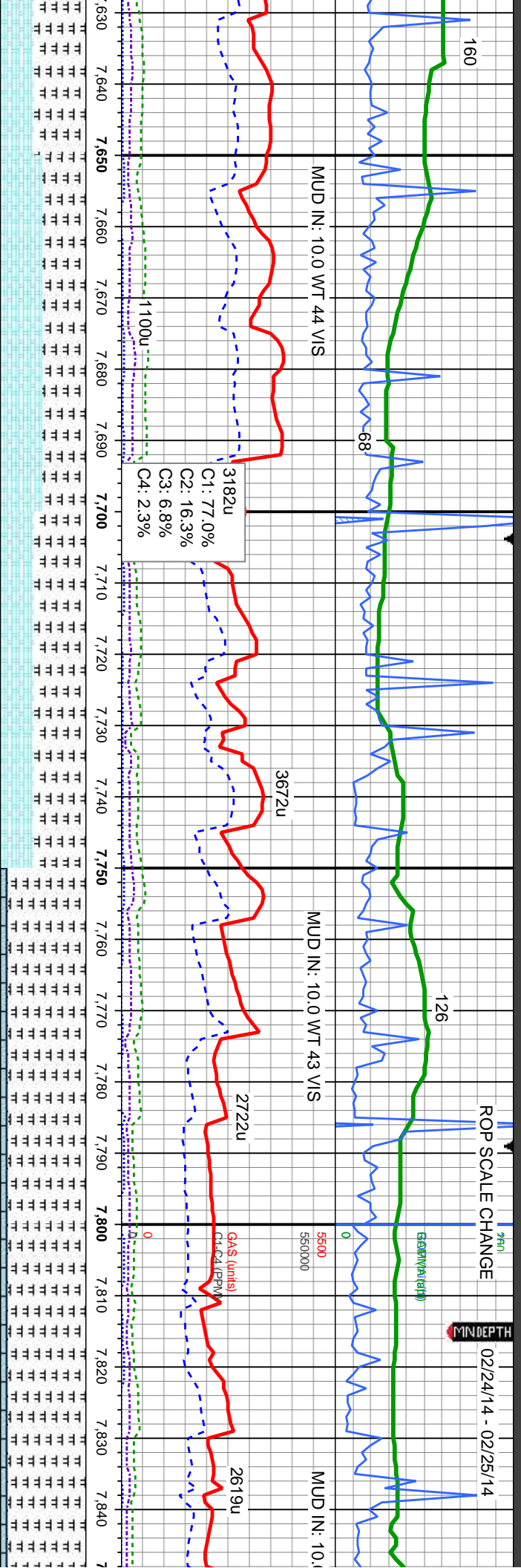
MRLST: dk-med gy-gy
sft-frn, calc, silty tex, (brn, sb blkly, sft, v calc
stmg milky bl cut, bl ring



ROP SCALE CHANGE

02/24/14 - 02/25/14

MINDEPTH



MD: 7,654' TVD: 7,451.23' Inclination: 53.91° Azimuth: 179.96° VS: -9.37'

MD: 7,697' TVD: 7,474.92' Inclination: 59.22° Azimuth: 179.6° VS: 26.44'

MD: 7,740' TVD: 7,495.43' Inclination: 63.79° Azimuth: 178.47° VS: 64.18'

MD: 7,782' TVD: 7,512.79' Inclination: 67.38° Azimuth: 177.03° VS: 102.40'

MD: 7,825' TVD: 7,528.11' Inclination: 70.86° Azimuth: 176.27° VS: 142.57'

MD: 7,654' TVD: 7,451.23' Inclination: 53.91° Azimuth: 179.96° VS: -9.37'

MD: 7,697' TVD: 7,474.92' Inclination: 59.22° Azimuth: 179.6° VS: 26.44'

MD: 7,740' TVD: 7,495.43' Inclination: 63.79° Azimuth: 178.47° VS: 64.18'

MD: 7,782' TVD: 7,512.79' Inclination: 67.38° Azimuth: 177.03° VS: 102.40'

MD: 7,825' TVD: 7,528.11' Inclination: 70.86° Azimuth: 176.27° VS: 142.57'

MD: 7,654' TVD: 7,451.23' Inclination: 53.91° Azimuth: 179.96° VS: -9.37'

MD: 7,697' TVD: 7,474.92' Inclination: 59.22° Azimuth: 179.6° VS: 26.44'

MD: 7,740' TVD: 7,495.43' Inclination: 63.79° Azimuth: 178.47° VS: 64.18'

MD: 7,782' TVD: 7,512.79' Inclination: 67.38° Azimuth: 177.03° VS: 102.40'

MD: 7,825' TVD: 7,528.11' Inclination: 70.86° Azimuth: 176.27° VS: 142.57'

02/26/14

ROP SCALE CHANGE

02/27/14 - 02/28/14

93

45

WT 51 VIS

MUD IN: 10.0 WT 45 VIS

MUD IN: 10.0 WT 42 VIS

MUD IN: 10.30 WT 43 VIS

1371u
C1: 91.7%
C2: 1.9%
C3: 0.8%
C4: 0.1%

Landed curve @ 8040' MD
02/26/2014 @ 01:47 MST

Resumed drilling @ 13:00
MST on 2/28/2014

GAS (units)
C1-C4 (PPM)

2001u

1581u

7,850 7,860 7,870 7,880 7,890 7,900 7,910 7,920 7,930 7,940 7,950 7,960 7,970 7,980 7,990 8,000 8,010 8,020 8,030 8,040 8,050 8,060

7000

MD: 7,870 '
TVD: 7,541.66 '
Inclination: 74.04 °
Azimuth: 176.06 °
VS: -202.10 '

MD: 7,913 '
TVD: 7,551.75 '
Inclination: 78.8 °
Azimuth: 175.23 °
VS: -160.32 '

MD: 7,998 '
TVD: 7,563.24 '
Inclination: 84.38 °
Azimuth: 174.85 °
VS: -76.15 '

MD: 8,063 '
TVD: 7567.74 '
Inclination: 86.23 °
Azimuth: 175.01 °
VS: -21.36 '

MRLST: dk-med gy-gy brn, sb blk, med sft-fm, calc, silty tex; LS: wh-llgy, offwht-crm, v sft-sft, sb pty-sb blk, slow string milky bl cut, bl ring

MRLST: dk-med gy-gy brn, sb blk, med sft-fm, calc, silty tex, LS: wh-llgy, offwht-crm, v sft-sft, sb pty-sb blk, calc, slow string milky bl cut, bl ring

MRLST: dk-med gy-gy brn, sb blk, med sft-fm, calc, silty tex; LS: wh-llgy, offwht-crm, v sft-sft, sb pty-sb blk, calc, fast string milky bl cut, bl ring

MRLST: dk-med gy-gy brn, sb blk, med sft-fm, calc, silty tex; LS: wh-llgy, offwht-crm, v sft-sft, sb pty-sb blk, calc, fast string milky bl cut, bl ring

MRLST: dk-med gy-gy brn, sb blk, med sft-fm, calc, silty tex; LS: wh-llgy, offwht-crm, v sft-sft, sb pty-sb blk, slow string milky bl cut, bl ring



10
250

ROP (min/hr)
GAMMA (g)

61

116

MUD IN: 9.80 WT 48 VIS

MUD IN: 9.90 WT 47 VIS

MUD IN: 9.80 WT 51 VIS

5500
5500000

432u
C1: 98.7%
C2: 4.3%
C3: 0.0%
C4: 0.0%

GAS (units)
C1-C4 (PPM)

575u

8,070 8,080 8,090 8,100 8,110 8,120 8,130 8,140 8,150 8,160 8,170 8,180 8,190 8,200 8,210 8,220 8,230 8,240 8,250 8,260 8,270 8,280

7000

MD: 8,114 '
TVD: 7,570.73 '
Inclination: 88.15 °
Azimuth: 174.63 °
VS: 39.55 '

MD: 8,185 '
TVD: 7,572.6 '
Inclination: 88.83 °
Azimuth: 174.35 °
VS: 110.48 '

MD: 8,256 '
TVD: 7,572.79 '
Inclination: 90.86 °
Azimuth: 175.65 °
VS: 181.46 '

med gy-gy brn, sb blkly, med
ly tex; LS: wh-ilty,
ft-sft, sb pty-sb blkly, calc,
y bl cut, bl ring

LS: wh-ilty, offwht-crm, v sft-sft, sb pty-sb
blkly, calc; MRLST: dk-med gy-gy brn, sb
blkly, med sft-frm, calc, silty tex, tr chk, slow
stng milky bl cut, bl ring

CHK: med gy-gy brn, sb blkly, sft, v calc,
wxy-rthy tex, tr bent, LS: wh-ilty,
offwht-crm, v sft-sft, sb pty-sb blkly, calc,
fast stng milky bl cut, bri bl ring

8000



ROP SCALE CHANGE

2

88

110

79

88

ROP (min/h)
GAMMA (api)

GAS SCALE CHANGE

1500
150000

MUD IN: 9.70 WT 46 VIS

MUD IN: 9.70 WT 48 VIS

MUD IN: 9.70 WT 47 VIS

582u
C1: 100.0%
C2: 0.0%
C3: 0.0%
C4: 0.0%

684u

801u

1034u

531u
C1: 85.5%
C2: 11.0%
C3: 3.4%
C4: 0.2%



MD: 8,309 '
TVD: 7,572.06 '
Inclination: 90.73 °
Azimuth: 173.75 °
VS: 234.43 '

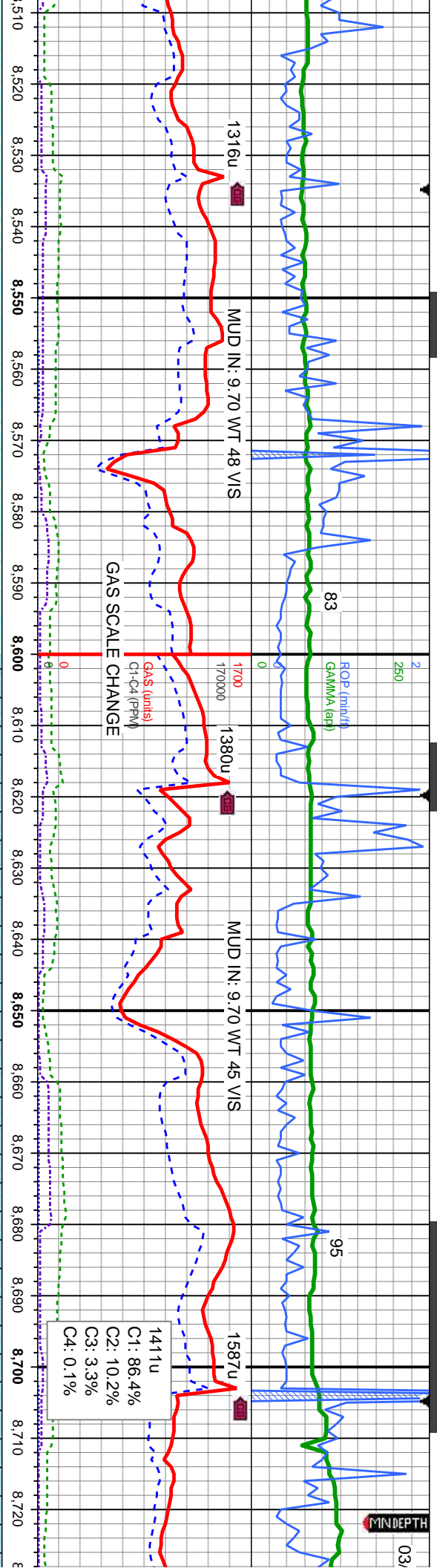
MD: 8,394 '
TVD: 7,571.36 '
Inclination: 90.21 °
Azimuth: 174.2 °
VS: 319.36 '

MD: 8,4
TVD: 7
Inclination:
Azimuth:
VS: 2 '

CHK: med gy-gy brn, sb blkly, sft, v calc,
wxy-rthy tex,LS: wh-llgy, oftwht-crm, v
sft-sft, sb plty-sb blkly, calc, fast stmg
milky bl cut, brt bl ring

CHK: med gy-gy brn, sb blkly, sft, v calc,
wxy-rthy tex,LS: wh-llgy, oftwht-crm, v
sft-sft, sb plty-sb blkly, calc, fast stmg
milky bl cut, brt bl ring





MD: 8,511 '
TVD: 7,572.22 '
Inclination: 88.95 °
Azimuth: 172 °

MD: 8,583 '
TVD: 7,573.79 '
Inclination: 88.55 °
Azimuth: 170.81 °
VS: 507.88 '

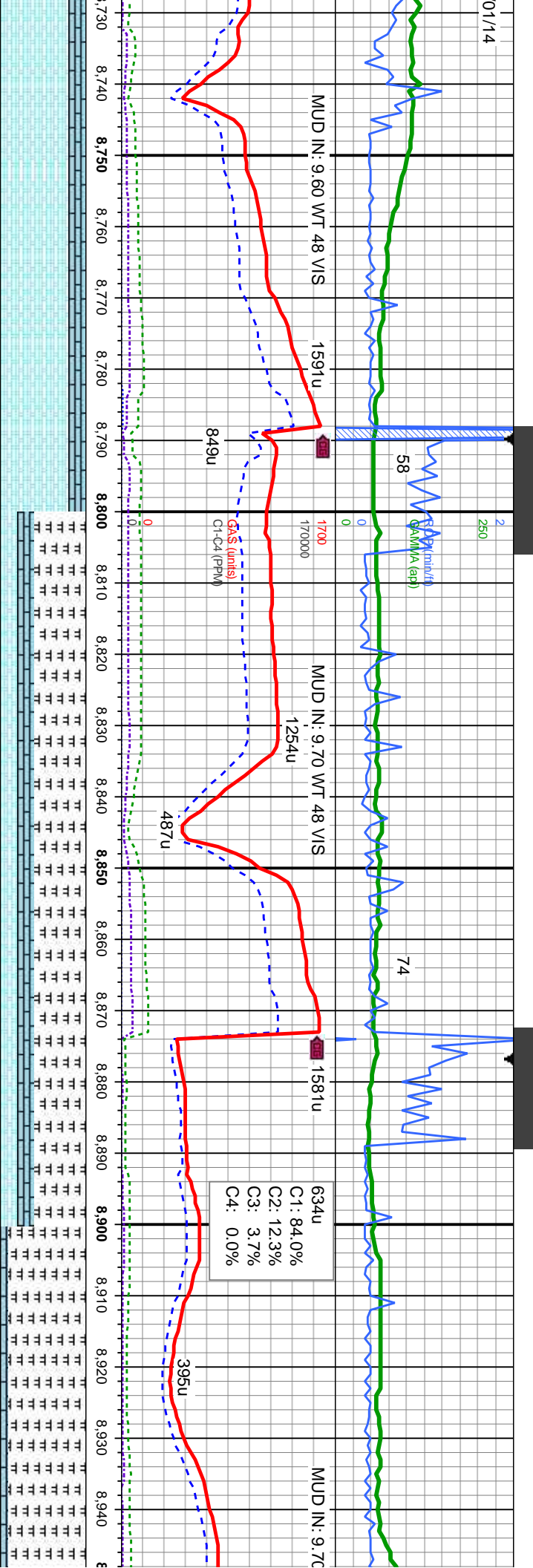
MD: 8,650 '
TVD: 7,574.57 '
Inclination: 90.12 °
Azimuth: 171.99 °
VS: 574.62 '

1411u
C1: 86.4%
C2: 10.2%
C3: 3.3%
C4: 0.1%

CHK: med gy-gy brn, sb blk, sft, v calc, wxy-rthy tex, fast string milky bl cut, bri bl ring

CHK: med gy-gy brn, sb blk, sft, v calc, wxy-rthy tex; LS: wh-lgy, offwht-crm, v sft-sft, sb pily-sb blk, calc, slow string milky bl cut, bri bl ring





MD: 8,735 '
TVD: 7,574.43 '
Inclination: 90.06 °
Azimuth: 173.12 °
VS: 659.44 '

MD: 8,820 '
TVD: 7,573.52 '
Inclination: 91.17 °
Azimuth: 174.68 °
VS: 744.35 '

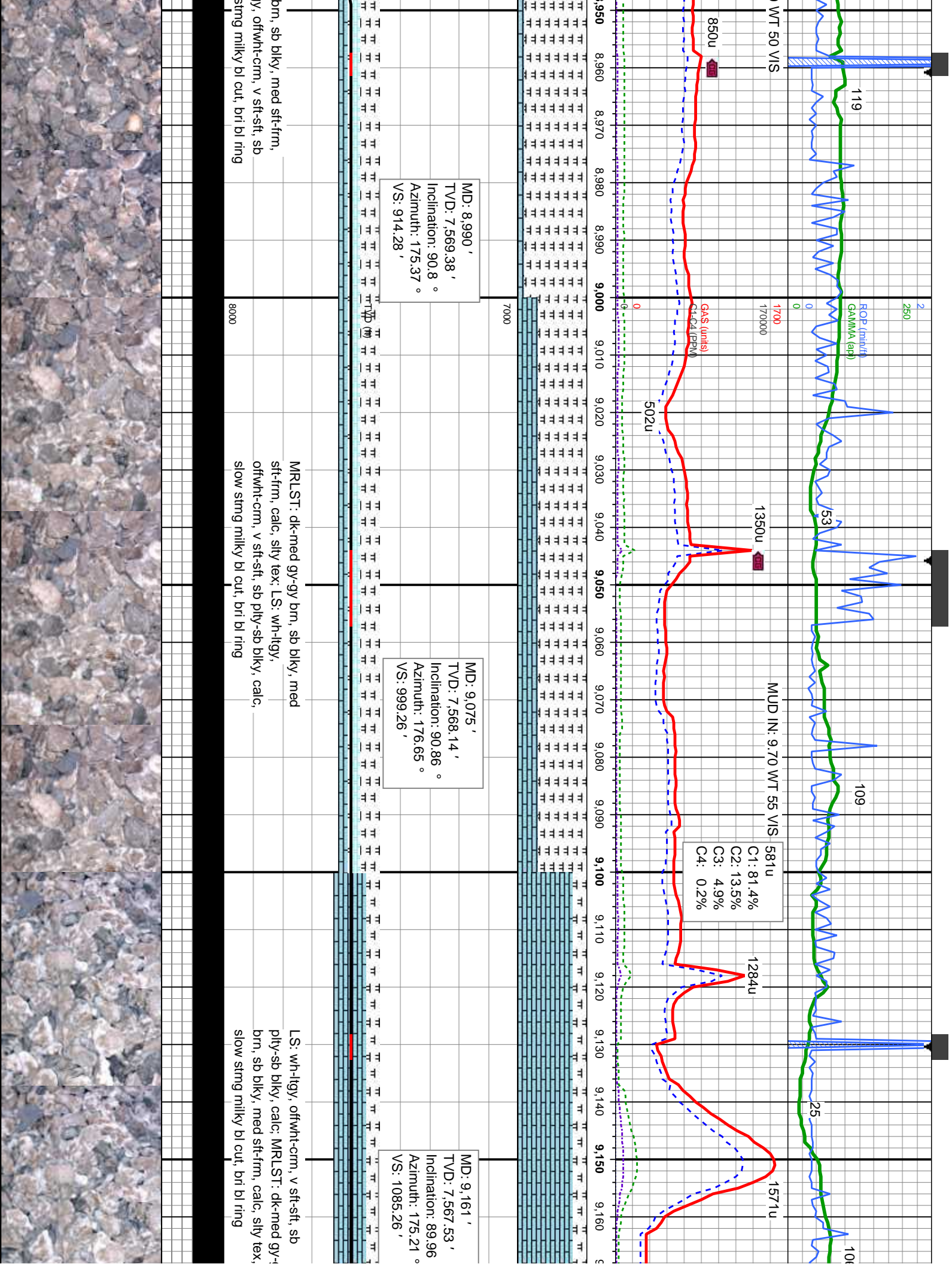
MD: 8,905 '
TVD: 7,571.31 '
Inclination: 91.81 °
Azimuth: 175.87 °
VS: 829.31 '

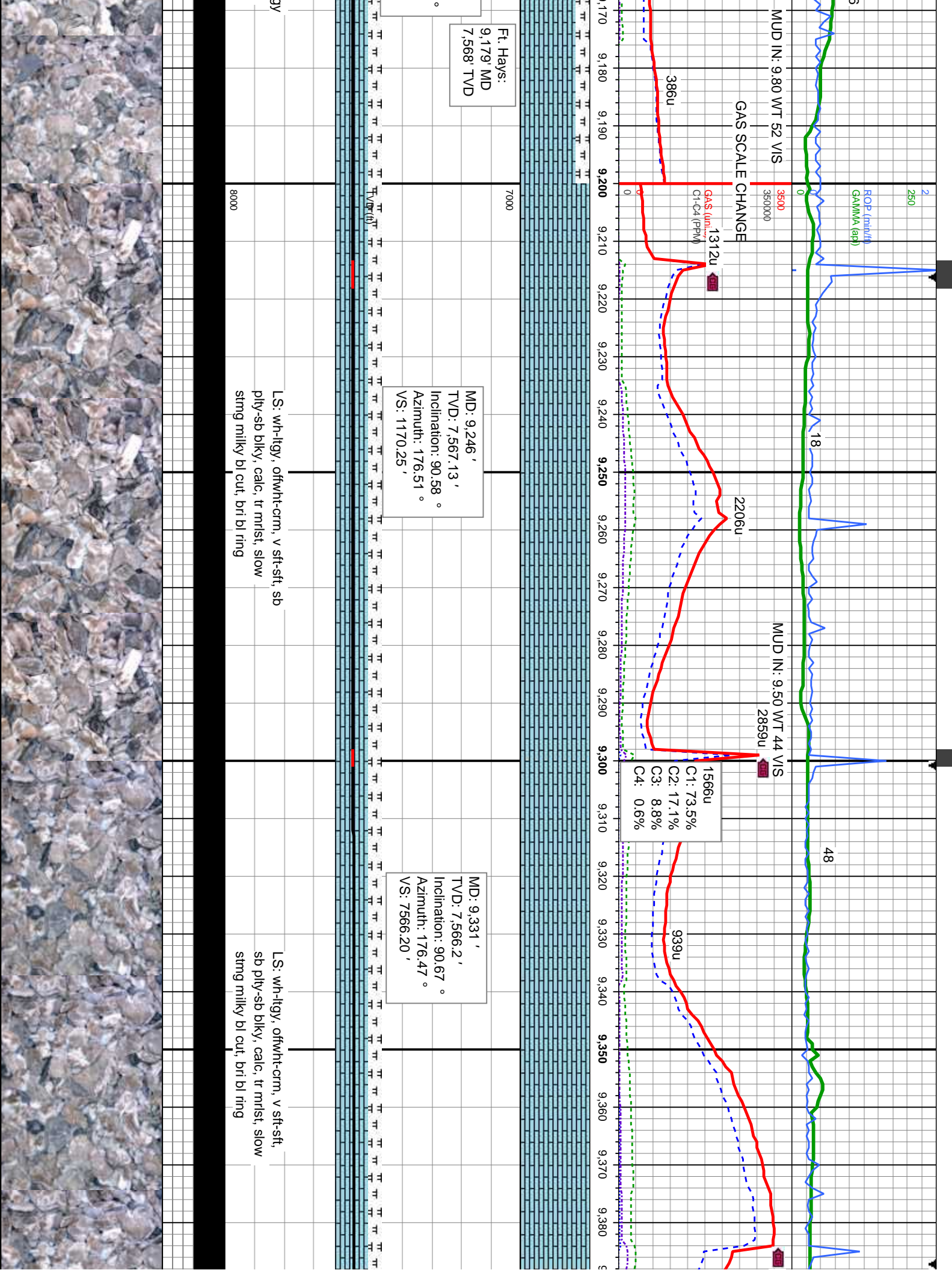
HL: med gy-gy brn, sb blk, v calc, wxy-rthy
K: LS: wh-ilty, offwh-crm, v sft-sft, sb pty-sb
gy, calc, slow stmg milky bl cut, bri bl ring

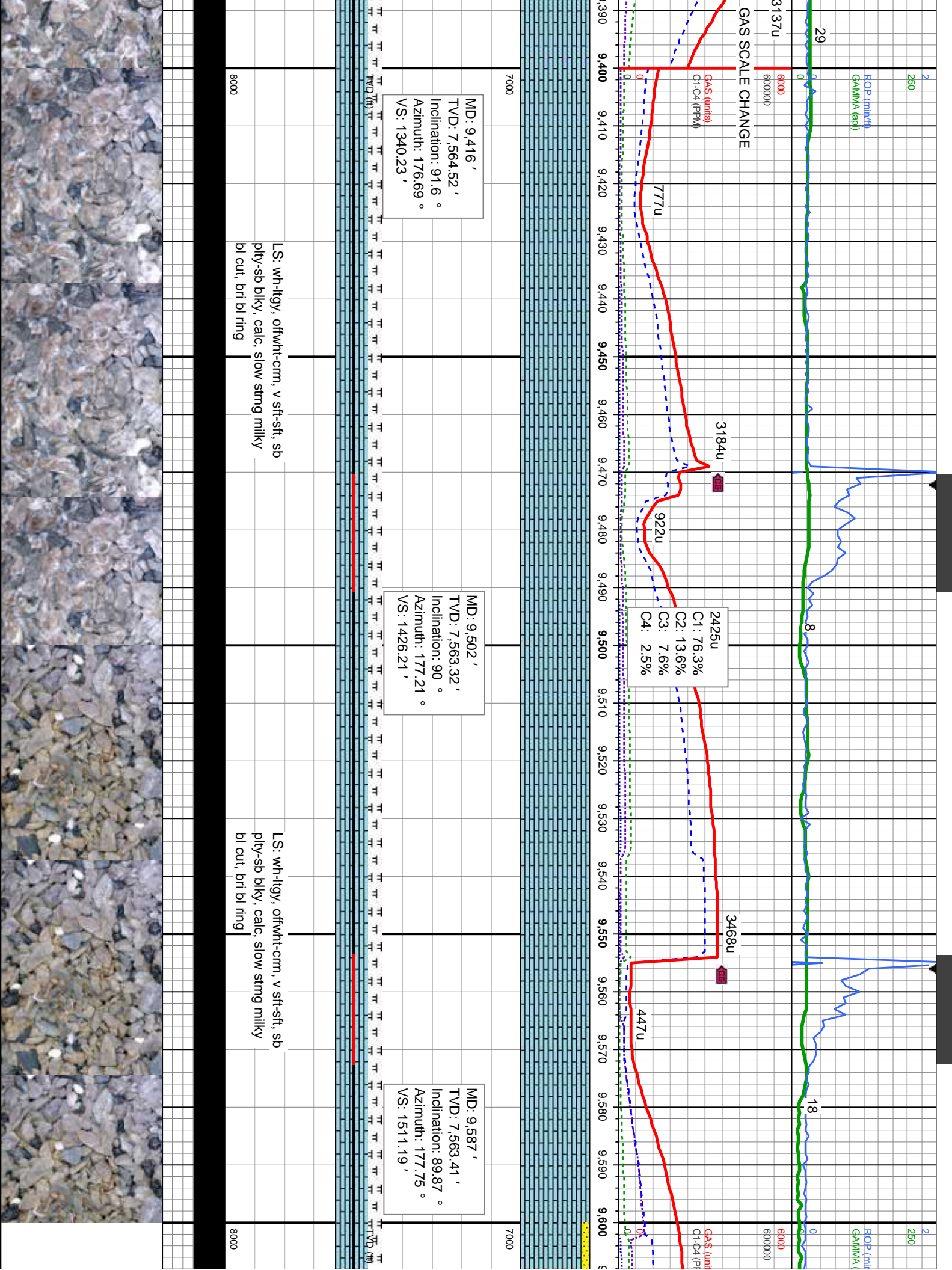
MRLST: dk-med gy-gy brn, sb blk, med sft-fm, calc,
silty tex; LS: wh-ilty, offwh-crm, v sft-sft, sb pty-sb
blk, calc; CHK: med gy-gy brn, sb blk, sft, v calc,
wxy-rthy tex, slow stmg milky bl cut, bri bl ring

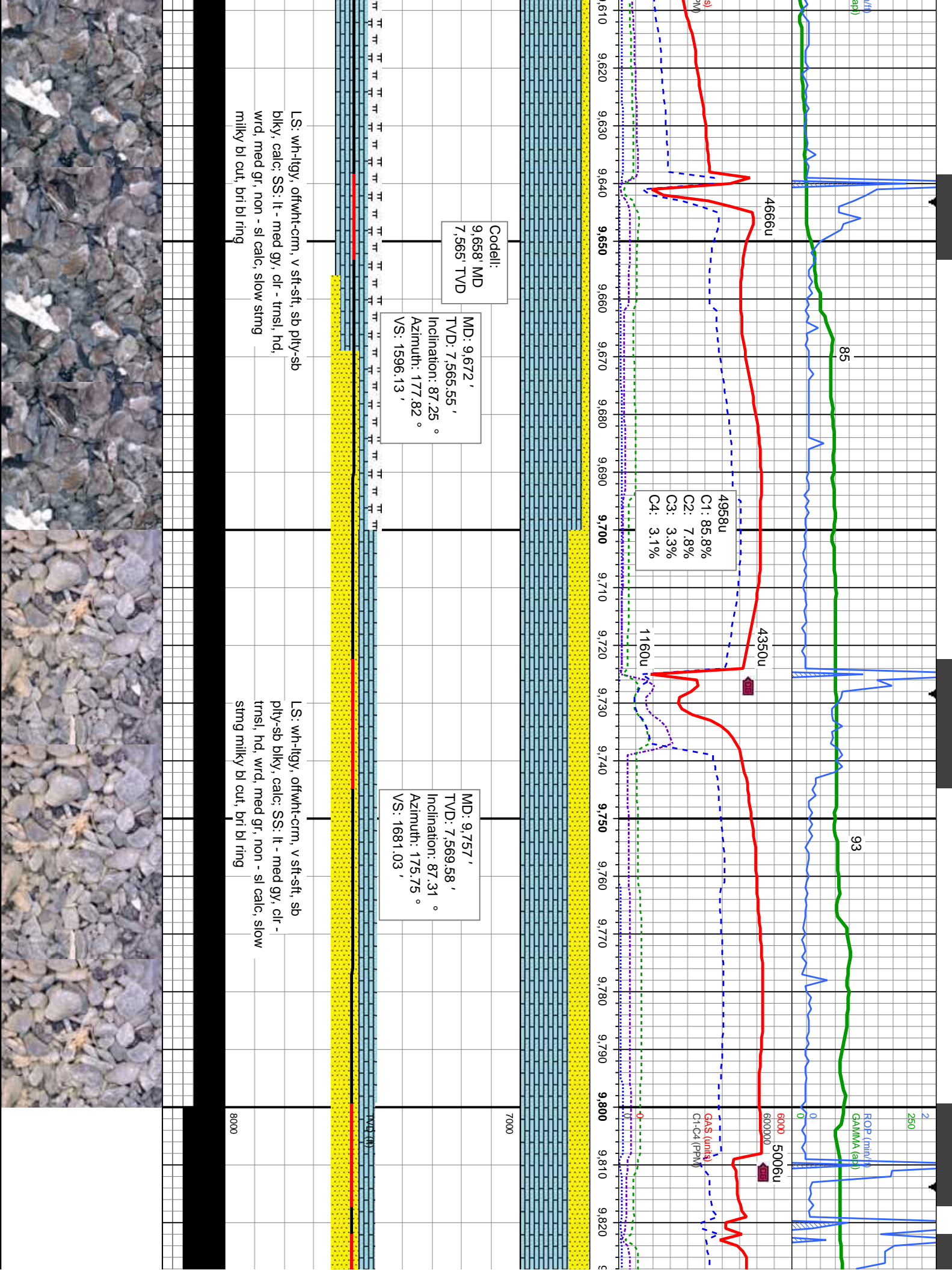
MRLST: dk-med gy-gy
calc, silty tex; LS: wh-ilty
pty-sb blk, calc, slow :









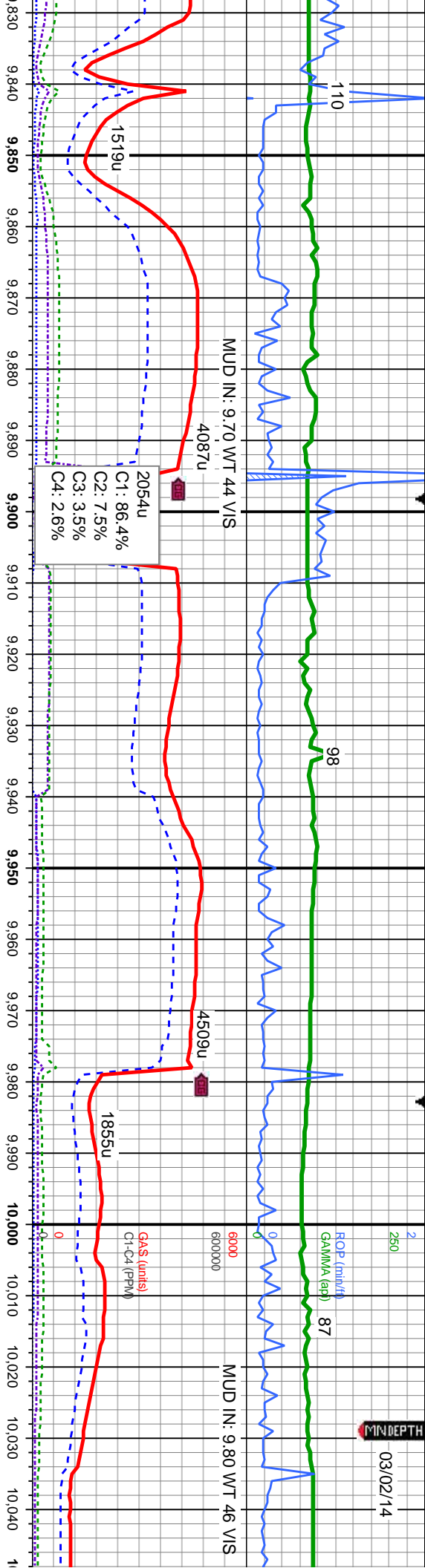


MUD IN: 9.70 WT 44 VIS

MUD IN: 9.80 WT 46 VIS

2054u
C1: 86.4%
C2: 7.5%
C3: 3.5%
C4: 2.6%

GAS (units)
C1-C4 (PPM)



MD: 9.843 '
TVD: 7,572.88 '
Inclination: 88.3 °
Azimuth: 175.96 °
VS: 1766.96 '

MD: 9.928 '
TVD: 7,574.76 '
Inclination: 89.16 °
Azimuth: 175.28 °
VS: 1851.93 '

MD: 10.013 '
TVD: 7,576.67 '
Inclination: 88.27 °
Azimuth: 175.69 °
VS: 1936.90 '

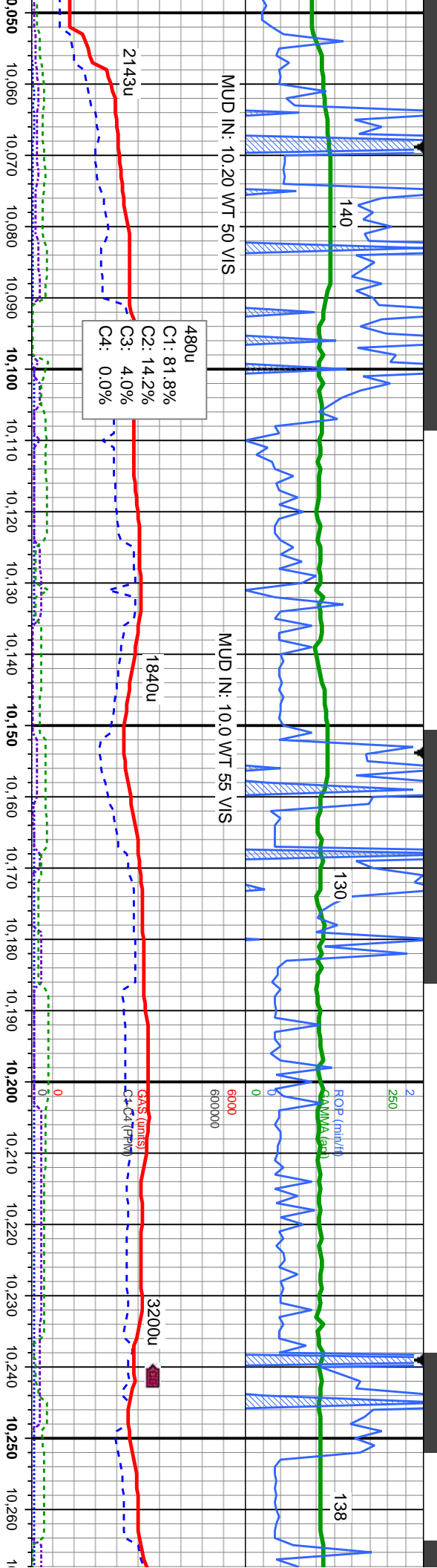
Fault @ 10.013'
5' upthrow

LS: wh-llgy, oflwh-frm, v sft-sft, sb
ply-sb blk, calc; SS: lt - med gy, clr -
trns, hd, wrd, med gr, non - sl calc,
slow string milky bl cut, bri bl ring

SS: lt - med gy, clr - trns, hd, wrd, med
gr, non - sl calc, LS: wh-llgy, oflwh-frm, v
sft-sft, sb ply-sb blk, calc; slow string
milky bl cut, bri bl ring

SS: lt - med gy, clr - trns, hd, wrd, med
gr, non - sl calc, LS: wh-llgy, oflwh-frm, v
sft-sft, sb ply-sb blk, calc; slow string
milky bl cut, bri bl ring





MD: 10,108 '
TVD: 7,578.26 '
Inclination: 89.81 °
Azimuth: 174.89 °
VS: 2031.87 '

MD: 10,183 '
TVD: 7,577.93 '
Inclination: 90.7 °
Azimuth: 175.33 °
VS: 2106.85 '

MD: 10,223 '
TVD: 7,577.93 '
Inclination: 90.7 °
Azimuth: 175.33 °
VS: 2199.85 '

r - trns, hd, wrd, med gr, offwht-crm, v
blky, calc; slow stmg
ring

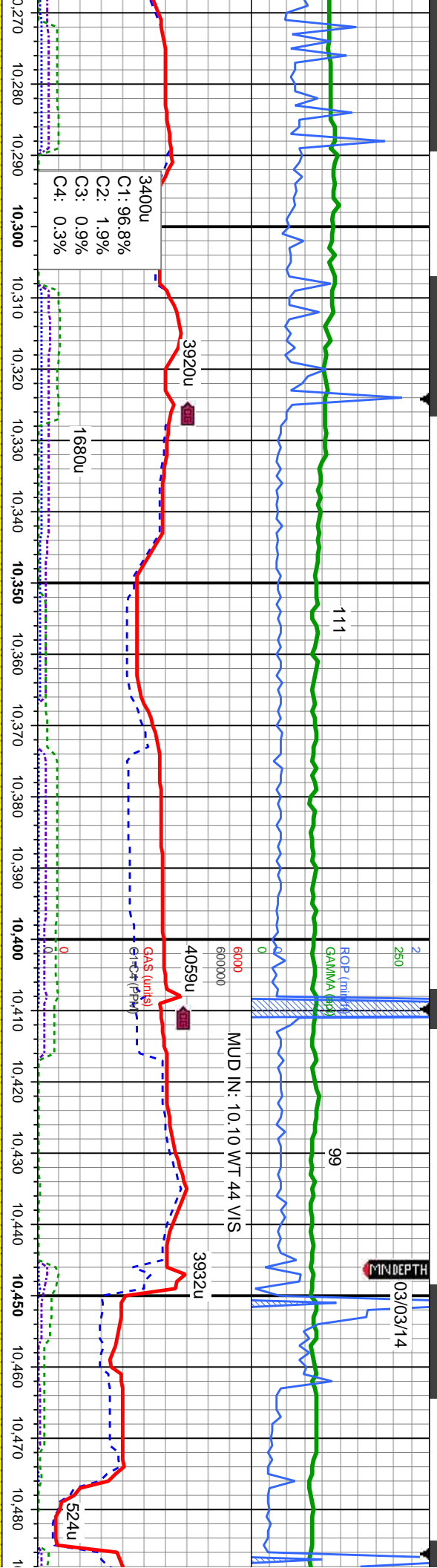
SS: lt - med gy, clr - trns, hd, wrd,
med gr, non - sl calc, tr LS, slow
stmg milky bl cut, bri bl ring

SS: lt - med gy, clr - trns, hd, wrd,
med gr, non - sl calc, tr LS, slow
stmg milky bl cut, bri bl ring



03/03/14

MINDEPTH



3400u
C1: 96.8%
C2: 1.9%
C3: 0.9%
C4: 0.3%

MD: 10.369 '
TVD: 7.76.22 '
Inclination: 91.57 °
Azimuth: 175.76 °
VS: 2.82 '

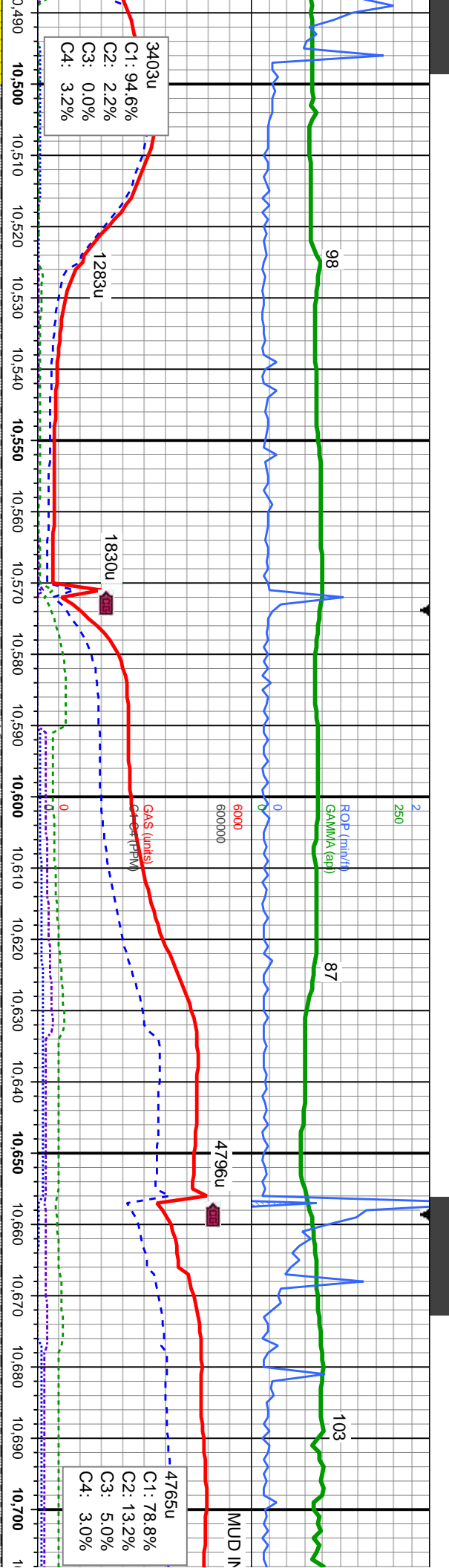
MD: 10.354 '
TVD: 7.574.38 '
Inclination: 90.92 °
Azimuth: 175.37 °
VS: 2277.80 '

MD: 10.434 '
TVD: 7.573.54 '
Inclination: 90.27 °
Azimuth: 175.74 °
VS: 2357.78 '

SS: lt - med gy, clr - trns, hd, wrd,
med gr, non - sl calc, slow stmg
milky bl cut, bri bl ring

SS: lt - med gy, clr - trns, hd, wrd,
med gr, non - sl calc, slow stmg
milky bl cut, bri bl ring

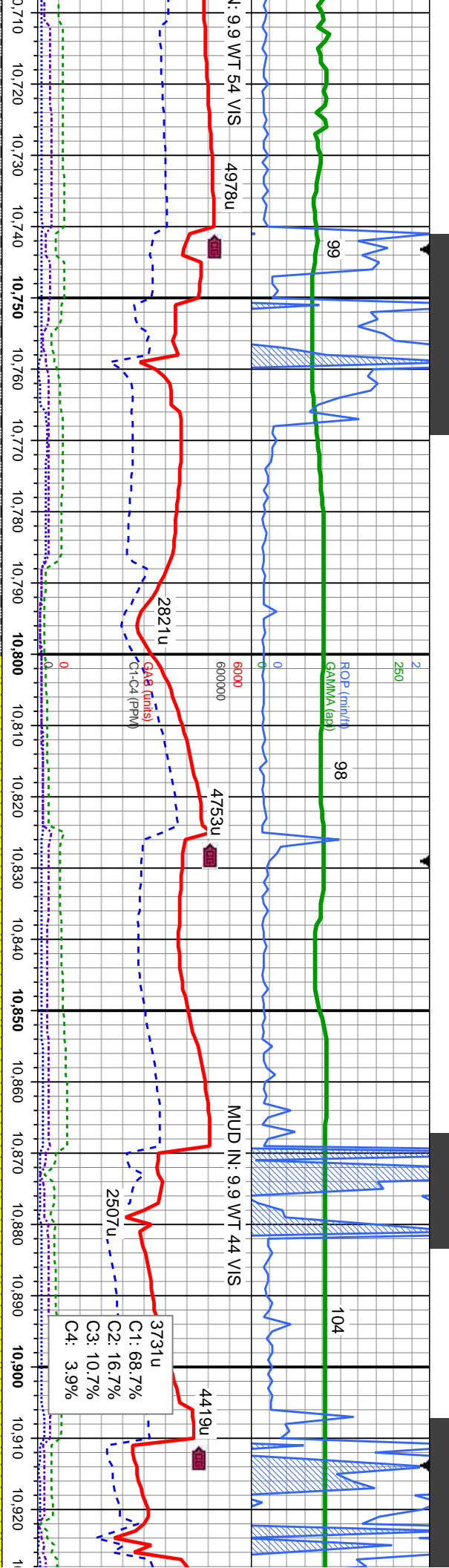




SS: lt - med gy, clr - trns, hd, wrd, med gr, non - sl calc, SLTY SH: dk-med gy-gy brn, sb ply-sb blk, med sft-firm, mod fri-sl brt, v sl calc, v silty slow stmg milky bl cut, bri bl ring

SS: lt - med gy, clr - trns, hd, wrd, med gr, non - sl calc, SLTY SH: dk-med gy-gy brn, sb ply-sb blk, med sft-firm, mod fri-sl brt, v sl calc, v silty slow stmg milky bl cut, bri bl ring

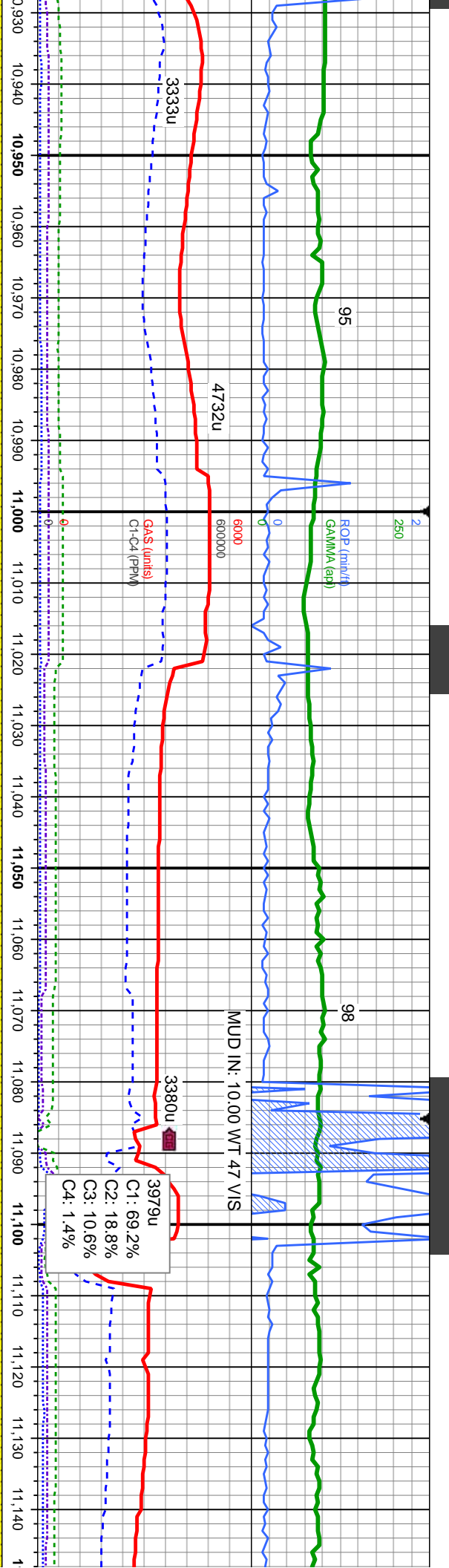




SS: lt - med gy, clr - trns, hd, wrd, med gr, non
- sl calc, SLTY SH: dk-med gy-gy brn, sb
ply-sb blk, med sft-fm, mod fri-sl brt, v sl
calc, v stly slow stng milky bl cut, bri bl ring

SS: lt - med gy, clr - trns, hd,
wrd, med gr, non - sl calc, tr
SLTY SH, slow stng milky bl cut,
bri bl ring





MD: 10,945 '
TVD: 7,571.6 '
Inclination: 89.75 °
Azimuth: 177.6 °
VS: 2868.56 '

MD: 11,030 '
TVD: 7,571.87 '
Inclination: 89.1 °
Azimuth: 177.47 °
VS: 2953.54 '

MD: 11,116 '
TVD: 7,572.44 '
Inclination: 90.15 °
Azimuth: 175.96 °
VS: 3039.53 '

SS: lt - med gy, clr - trns, hd, wrd, med
gr, non - sl calc; tr SLTY SH, slow
stmg milky bl cut, brl bl ring

SS: lt - med gy, clr - trns, hd, wrd,
med gr, non - sl calc; tr SLTY SH,
slow stmg milky bl cut, brl bl ring

SS: lt - med gy
wrd, med gr, n
stmg milky bl c



03/04/14
MINDEPTH

107

87

104

MUD IN: 10.00 WT 47 VIS

MUD IN: 10.00 WT 47 VIS

MUD IN: 9.90 WT 55 VIS

6000

6000000

3072u

4290u

3372u

2675u

C1: 67.8%
C2: 19.3%
C3: 11.2%
C4: 1.6%

MD: 11,201 '
TVD: 7,571.75 '
Inclination: 90.77 °
Azimuth: 176.95 °
VS: 3124.53 '

MD: 11,286 '
TVD: 7,570.59 '
Inclination: 90.8 °
Azimuth: 176.59 °
VS: 3209.52 '

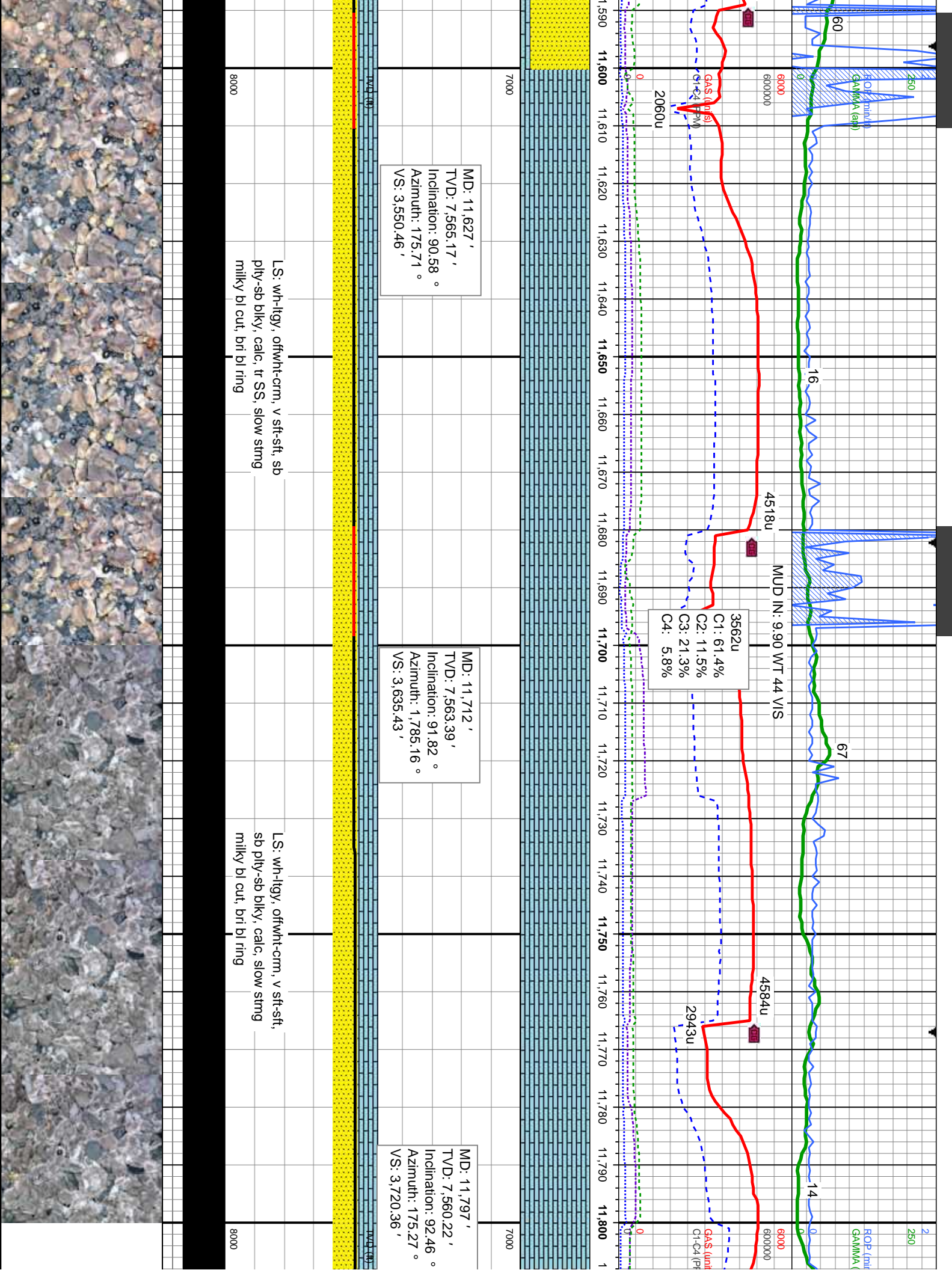
MD: 11
TVD: 7
Inclination:
Azimuth:
VS: 322

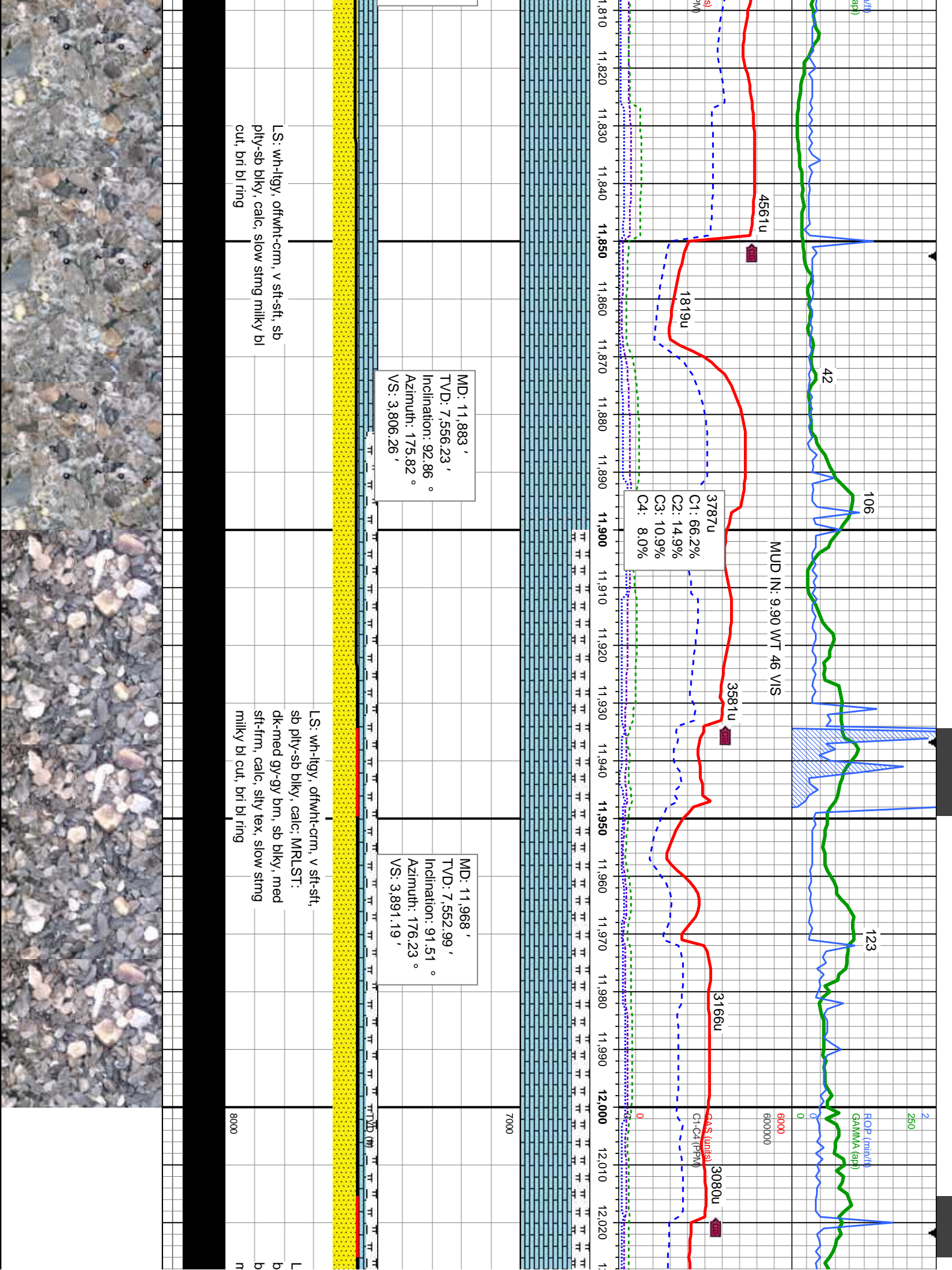
clt - trns, hd,
on - sl calc, slow
ut, bri bl ring

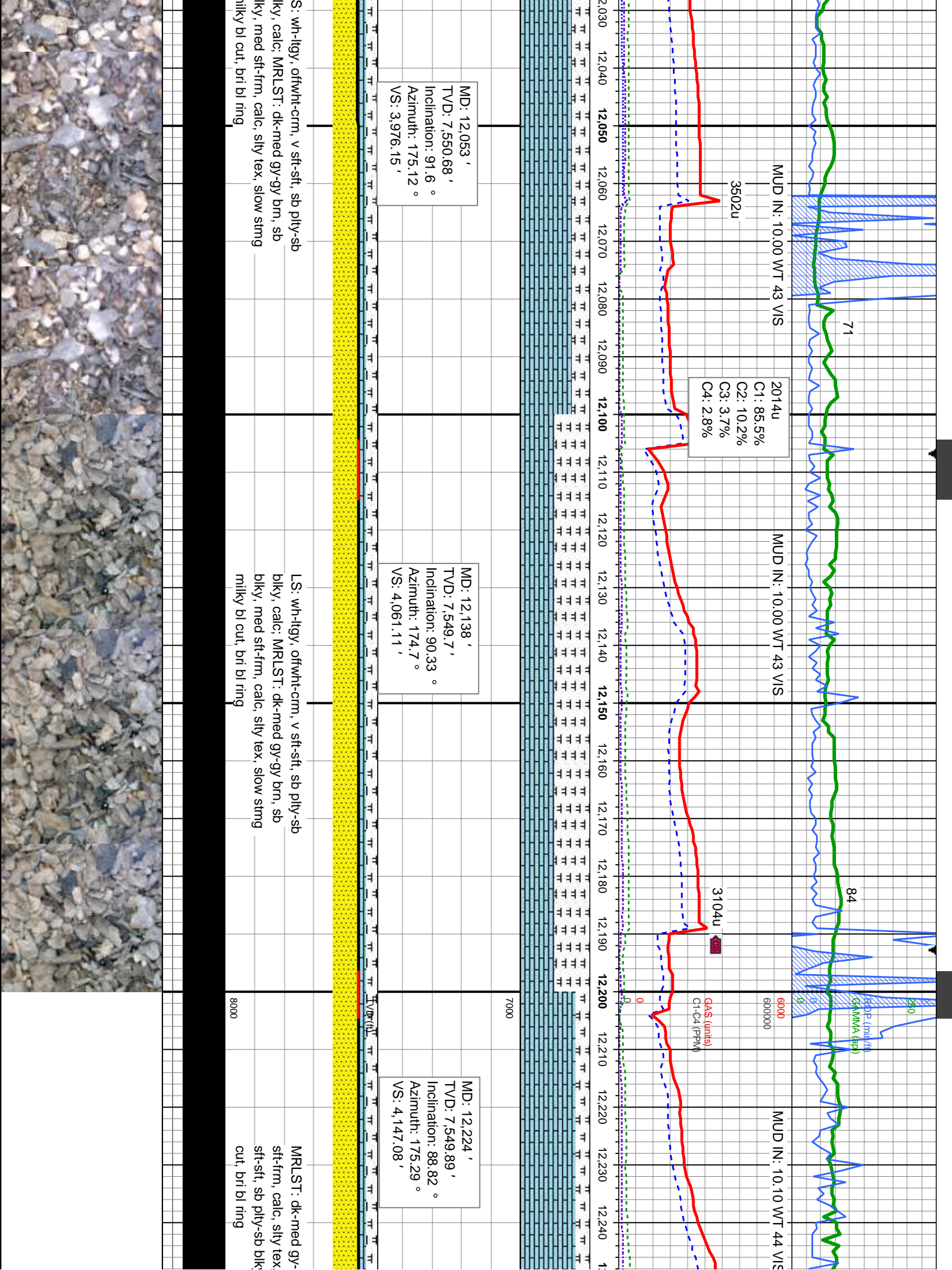
SS: lt - med gy, clt - trns, hd,
wrd, med gr, non - sl calc, tr
SLTY SH slow string milky bl cut,
bri bl ring

SS: lt - med gy, clt - trns, hd, wrd,
med gr, non - sl calc, tr SLTY SH,
slow string milky bl cut, bri bl ring









03/05/2014

MINDEPTH

74

MUD IN: 10.00 WT 42 VIS

3937u

2207u
C1: 77.6%
C2: 12.5%
C3: 8.4%
C4: 1.4%

776u

3148u

96

1294u

GAS (units)
C1-C4 (PPM)

ROP (min/hr)
GAMMA (api)
250
6000
600000

3663u

106

861u

Fault @ 12,462'

66' upthrow

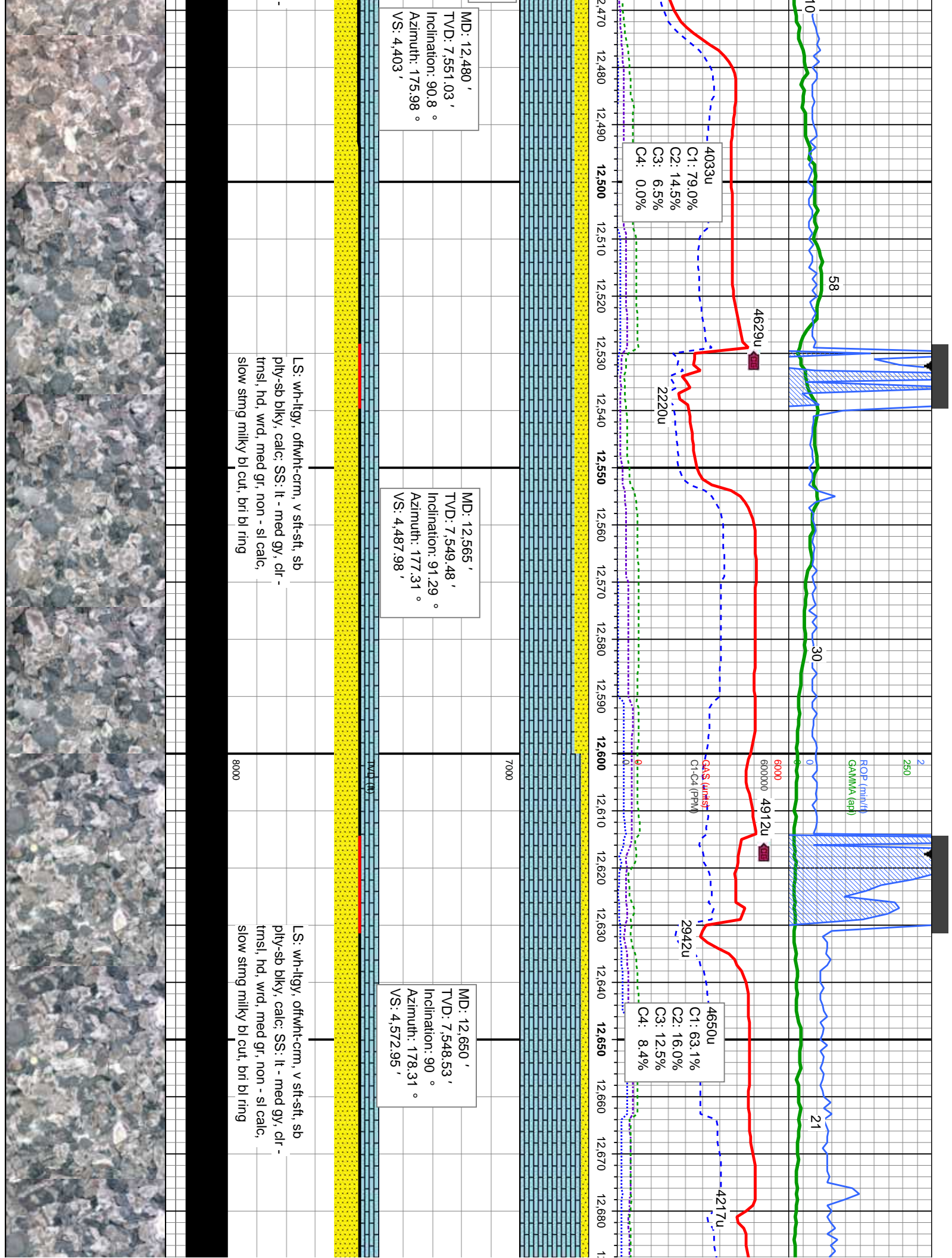
MD: 12,309 '
TVD: 7,551.43 '
Inclination: 89.1 °
Azimuth: 174.61 °
VS: 4,232.04 '

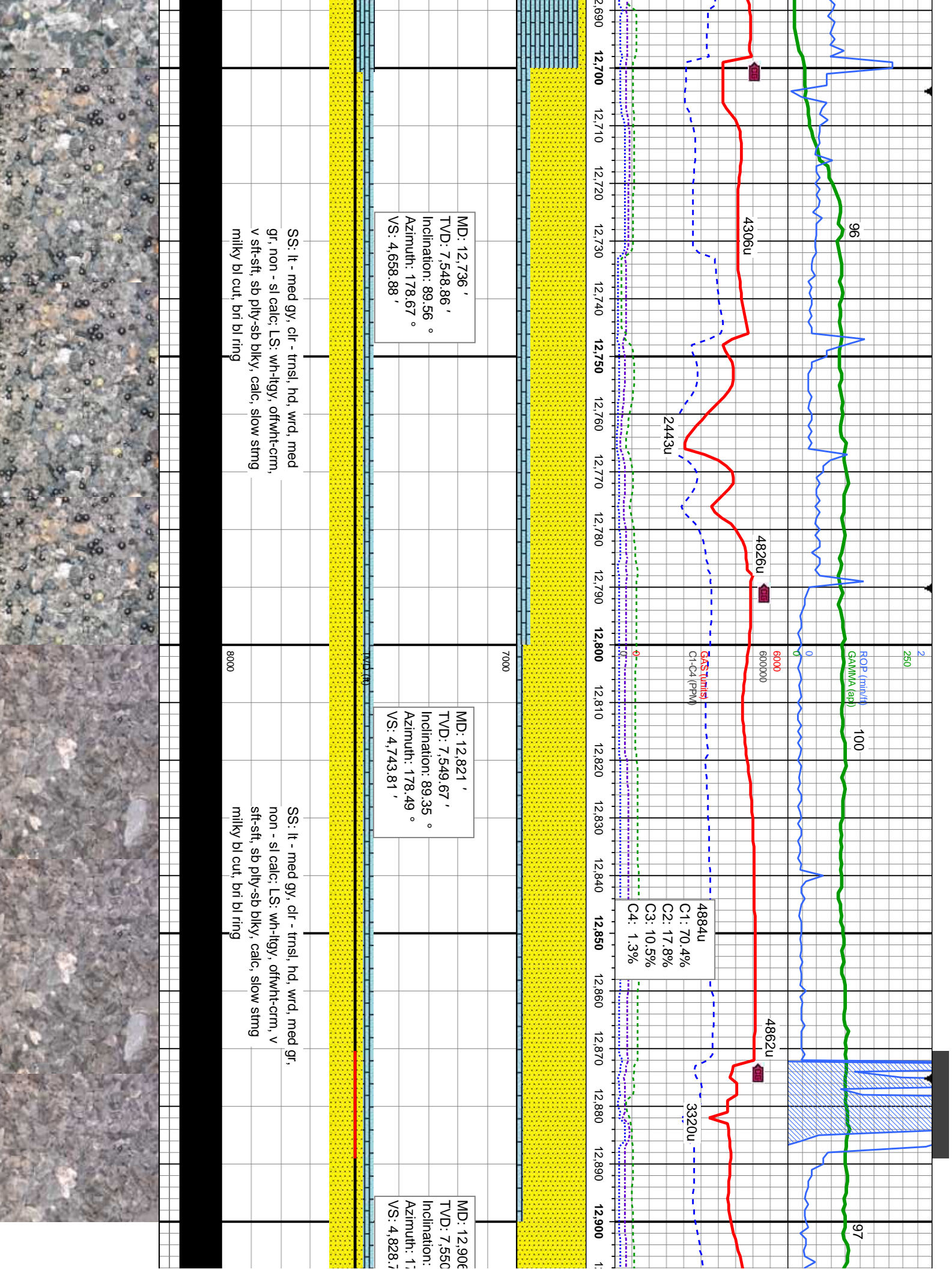
MD: 12,394 '
TVD: 7,551.87 '
Inclination: 90.31 °
Azimuth: 175.14 °
VS: 4,317.01 '

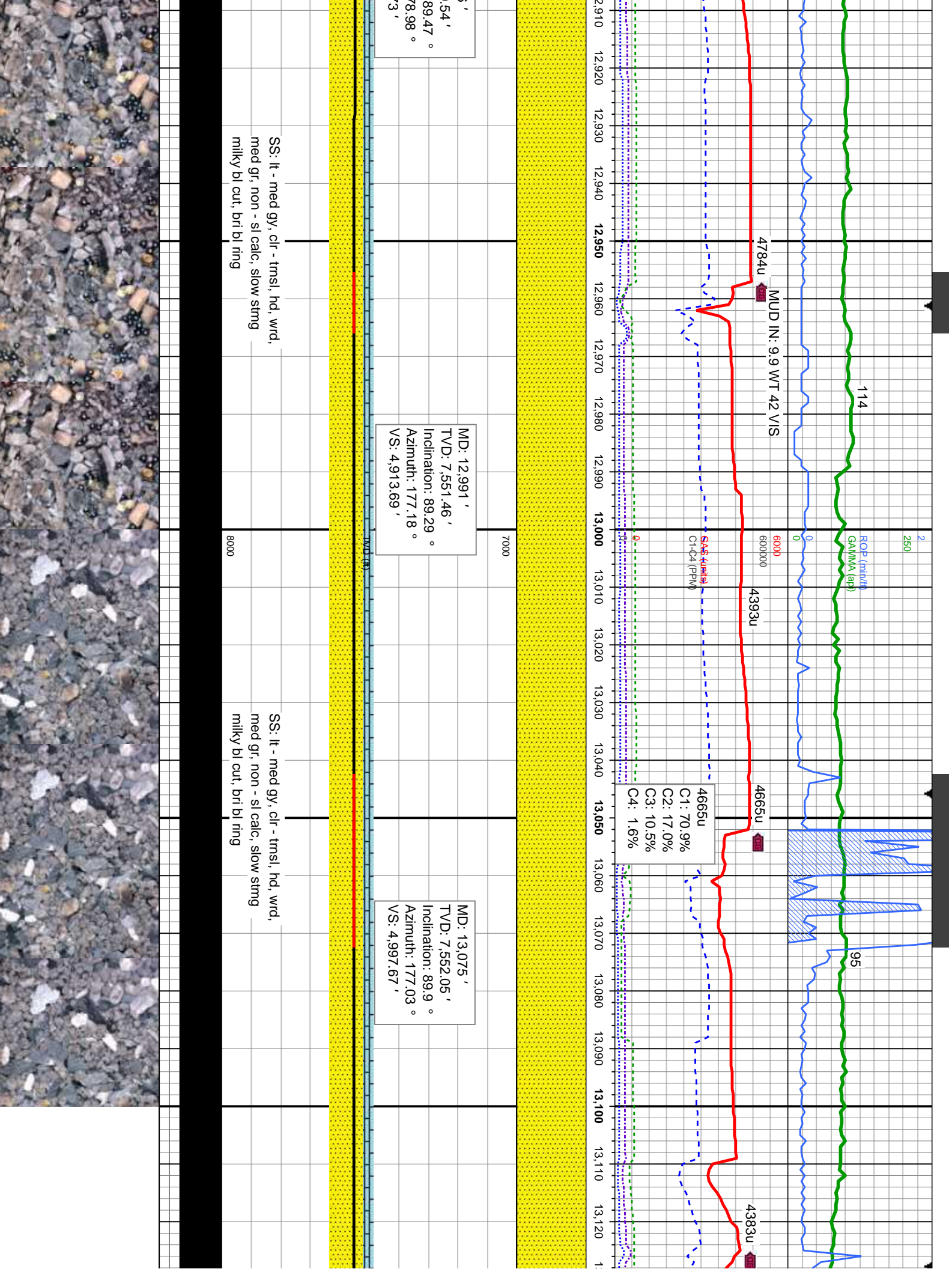
gy brn, sb blk, med
LS: wh-ilty, ofwht-cm, v
/y, calc, slow stmg milky bl

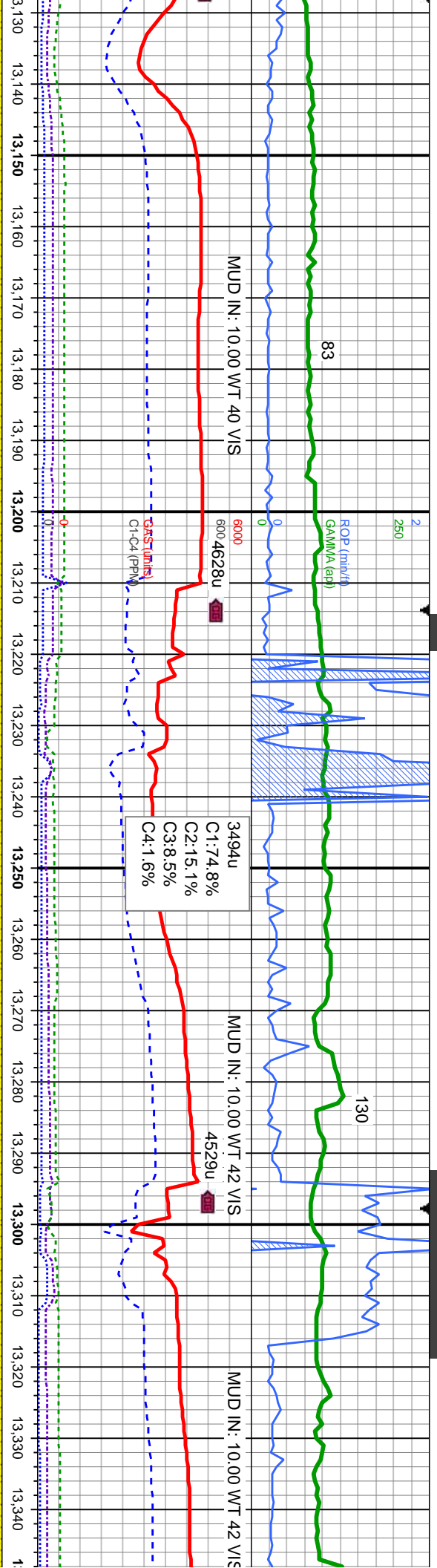
MR LST: dk-med gy-gy brn, sb blk, med
sft-firm, calc, silty tex; LS: wh-ilty, ofwht-cm, v
sft-sft, sb ply-sb blk, calc; SS: lt - med gy, cfr
- trns, hd, wrd, med gr, non - sl calc, slow
stmg milky bl cut, bri bl ring

LS: wh-ilty, ofwht-cm, v sft-sft, sb
ply-sb blk, calc; SS: lt - med gy, cfr
trns, hd, wrd, med gr, non - sl calc,
slow stmg milky bl cut, bri bl ring









MD: 13,160 '
TVD: 7,552.46 '
Inclination: 89.56 °
Azimuth: 176.73 °
VS: 5,082.67 '

MD: 13,245 '
TVD: 7,553.13 '
Inclination: 89.53 °
Azimuth: 175.38 °
VS: 5,167.66 '

MD: 13,330 '
TVD: 7,553.07 '
Inclination: 90.55 °
Azimuth: 175.34 °
VS: 5,252.65 '

SS: lt - med gy, clr - trns, hd, wrd,
med gr, non - sl calc, slow stng
milky bl cut, brt bl ring

SS: lt - med gy, clr - trns, hd, wrd, med
gr, non - sl calc, slow stng milky bl cut,
brt bl ring

SS: lt - med gy, clr -
non - sl calc, slow st
ring

