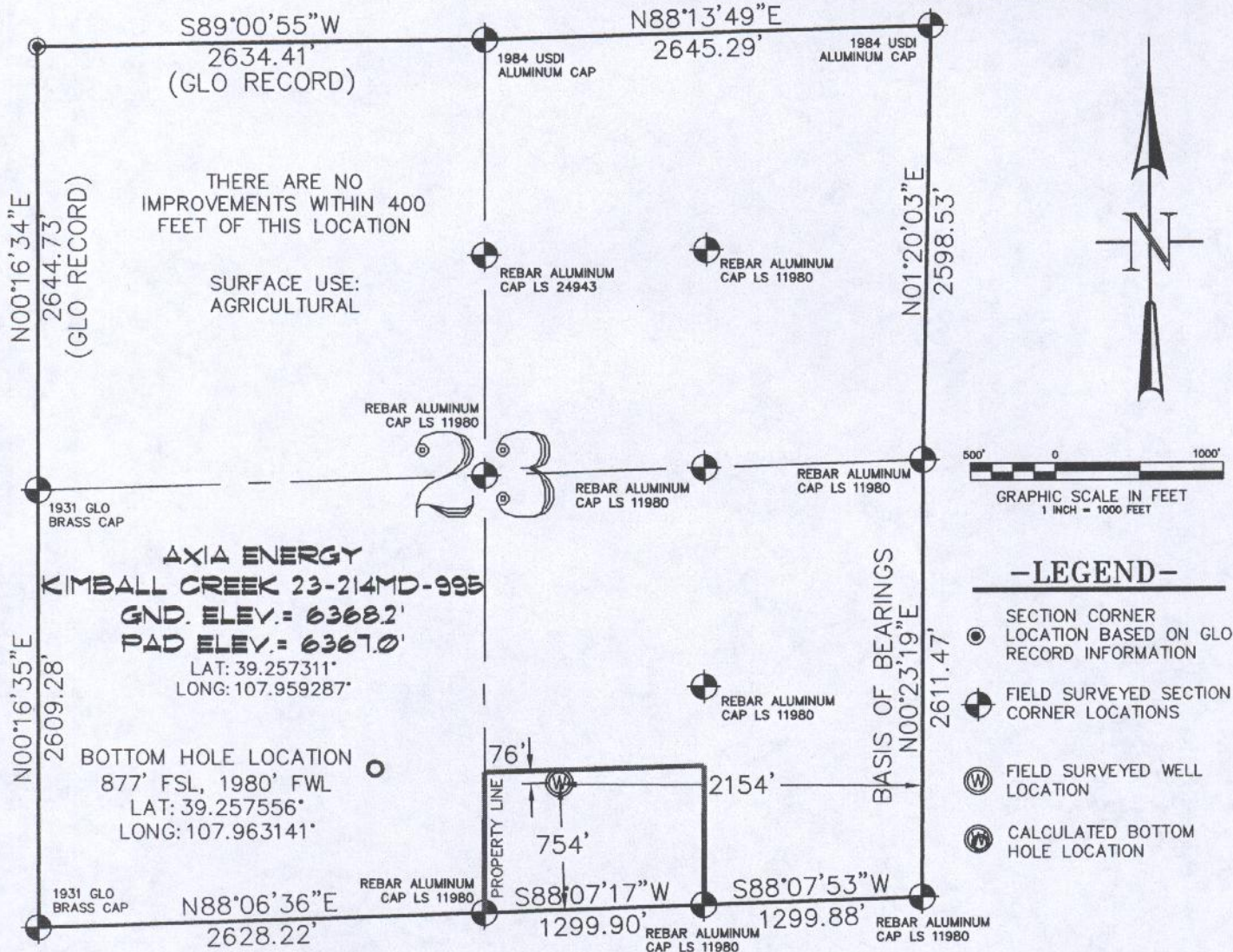


SEC. 23, T. 9 S., R. 95 W. OF THE 6TH P.M. Kimball Creek 23-4C-995  
Pad Location



THIS WELL LOCATION PLAT WAS PREPARED FOR AXIA ENERGY TO LOCATE THE KIMBALL CREEK 23-214MD-995 WELL, 754 FEET FROM THE SOUTH LINE AND 2154 FEET FROM THE EAST LINE IN THE SW1/4 SE1/4 OF SECTION 23, T. 9 S., R. 95 W. OF THE 6TH P.M. MESA COUNTY, COLORADO.

#### REFERENCE NOTES

- 1) T. 9 S., R. 95 W., 6TH P.M. GLO PLAT.
- 2) U.S.G.S. QUAD: HAWKHURST CREEK, CO
- 3) ELEVATIONS BASED ON N.A.V.D. 1988
- 4) LATITUDES AND LONGITUDES ARE BASED ON NAD 83, COLORADO CENTRAL ZONE.
- 5) GPS OPERATOR IVAN MARTIN, OBSERVED A PDOP OF 2.0.
- 6) ALL GPS OBSERVATIONS ARE IN COMPLIANCE WITH COGCC RULE NO. 215.
- 7) SURFACE AND BOTTOM HOLE LOCATIONS ARE MEASURED 90° FROM SECTION LINES.

#### SURVEYOR'S CERTIFICATE

I, George R. Bauer: a Professional Land Surveyor in the State of Colorado do hereby certify that this Survey was made under my direct supervision, and that this Plat represents said Survey.

COLORADO P.L.S. 27925



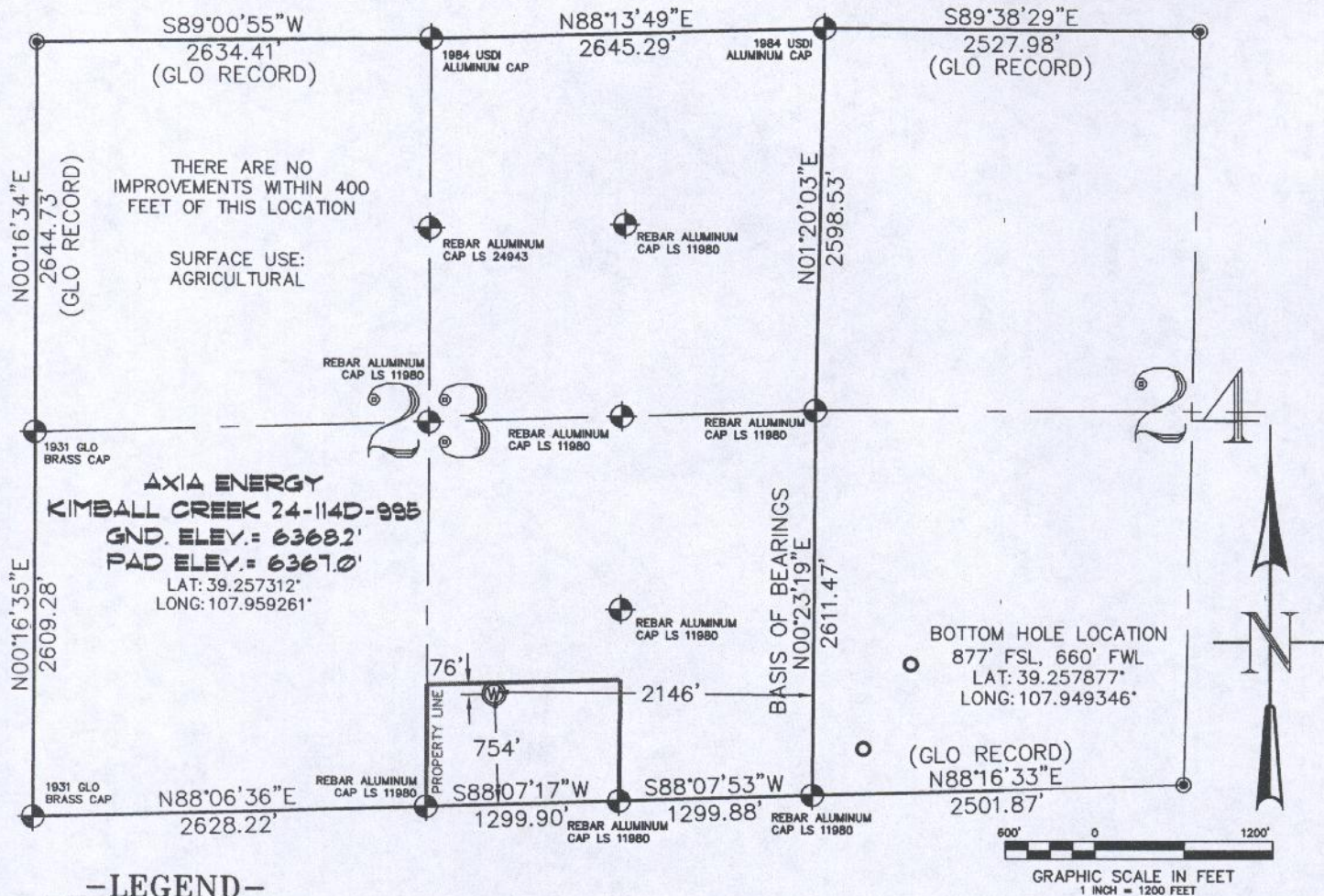
CONSTRUCTION SURVEYS, INC.  
0012 SUNRISE BLVD.  
SILT, CO 81652  
(970)876-5753

VIEW: 1C

SURVEYED: 08/23/10	SCALE: 1" = 1000'
DRAFTED: 08/30/10	DWG: Axia/KimballCreek234C995.dwg
CHECKED: 03/12/14	SHEET: 1 of 11



SEC. 23, T. 9 S., R. 95 W. OF THE 6TH P.M. Kimball Creek 23-4C-995  
Pad Location



**-LEGEND-**

- SECTION CORNER LOCATION BASED ON GLO RECORD INFORMATION
- ⊕ FIELD SURVEYED SECTION CORNER LOCATIONS
- ⊙ FIELD SURVEYED WELL LOCATION
- CALCULATED BOTTOM HOLE LOCATION

THIS WELL LOCATION PLAT WAS PREPARED FOR AXIA ENERGY TO LOCATE THE KIMBALL CREEK 24-114D-995 WELL, 754 FEET FROM THE SOUTH LINE AND 2146 FEET FROM THE EAST LINE IN THE SW1/4 SE1/4 OF SECTION 23, T. 9 S., R. 95 W. OF THE 6TH P.M. MESA COUNTY, COLORADO.

**REFERENCE NOTES**

- 1) T. 9 S., R. 95 W., 6TH P.M. GLO PLAT.
- 2) U.S.G.S. QUAD: HAWKHURST CREEK, CO
- 3) ELEVATIONS BASED ON N.A.V.D. 1988
- 4) LATITUDES AND LONGITUDES ARE BASED ON NAD 83, COLORADO CENTRAL ZONE.
- 5) GPS OPERATOR IVAN MARTIN, OBSERVED A PDOP OF 2.0.
- 6) ALL GPS OBSERVATIONS ARE IN COMPLIANCE WITH COGCC RULE NO. 215.
- 7) SURFACE AND BOTTOM HOLE LOCATIONS ARE MEASURED 90° FROM SECTION LINES.

**SURVEYOR'S CERTIFICATE**

I, George R. Bauer: a Professional Land Surveyor in the State of Colorado do hereby certify that this Survey was made under my direct supervision, and that this Plat represents said Survey.

COLORADO P.L.S. 27925



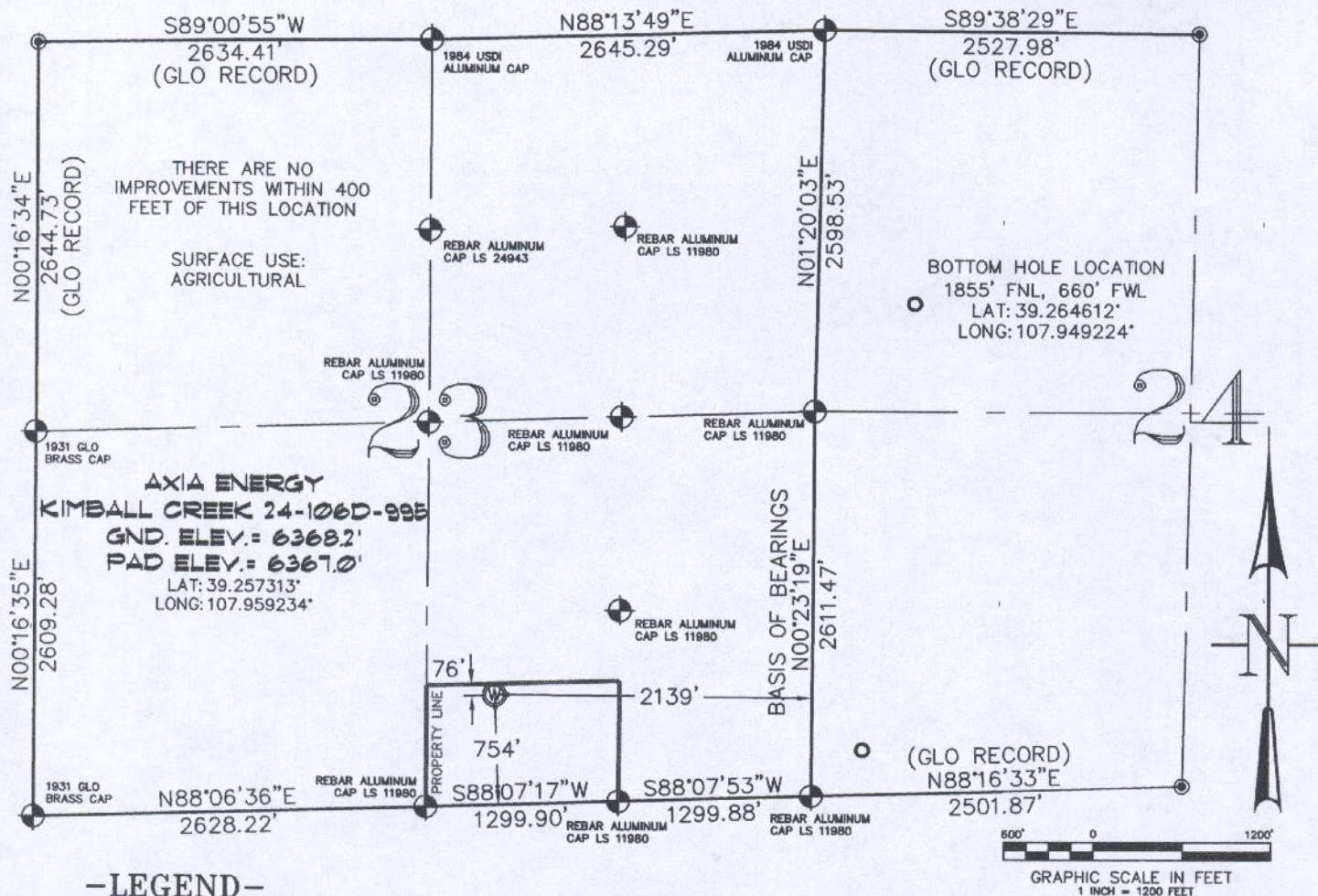
**CONSTRUCTION SURVEYS, INC.**  
0012 SUNRISE BLVD.  
SILT, CO 81652  
(970)876-5753

VIEW: 1F

SURVEYED: 08/23/10	SCALE: 1" = 1200'
DRAFTED: 08/30/10	DWG: Axia/KimballCreek234C995.dwg
CHECKED: 03/12/14	SHEET: 1 of 11



SEC. 23, T. 9 S., R. 95 W. OF THE 6TH P.M. Kimball Creek 23-4C-995  
Pad Location



-LEGEND-

- SECTION CORNER LOCATION BASED ON GLO RECORD INFORMATION
- ⊕ FIELD SURVEYED SECTION CORNER LOCATIONS
- ⊙ FIELD SURVEYED WELL LOCATION
- CALCULATED BOTTOM HOLE LOCATION

THIS WELL LOCATION PLAT WAS PREPARED FOR AXIA ENERGY TO LOCATE THE KIMBALL CREEK 24-106D-995 WELL, 754 FEET FROM THE SOUTH LINE AND 2139 FEET FROM THE EAST LINE IN THE SW1/4 SE1/4 OF SECTION 23, T. 9 S., R. 95 W. OF THE 6TH P.M. MESA COUNTY, COLORADO.

REFERENCE NOTES

- 1) T. 9 S., R. 95 W., 6TH P.M. GLO PLAT.
- 2) U.S.G.S. QUAD: HAWKHURST CREEK, CO
- 3) ELEVATIONS BASED ON N.A.V.D. 1988
- 4) LATITUDES AND LONGITUDES ARE BASED ON NAD 83, COLORADO CENTRAL ZONE.
- 5) GPS OPERATOR IVAN MARTIN, OBSERVED A PDOP OF 2.0.
- 6) ALL GPS OBSERVATIONS ARE IN COMPLIANCE WITH COGCC RULE NO. 215.
- 7) SURFACE AND BOTTOM HOLE LOCATIONS ARE MEASURED 90° FROM SECTION LINES.

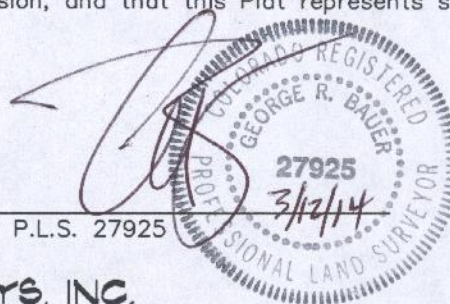
SURVEYOR'S CERTIFICATE

I, George R. Bauer: a Professional Land Surveyor in the State of Colorado do hereby certify that this Survey was made under my direct supervision, and that this Plat represents said Survey.

COLORADO P.L.S. 27925



CONSTRUCTION SURVEYS, INC.  
0012 SUNRISE BLVD.  
SILT, CO 81652  
(970)876-5753

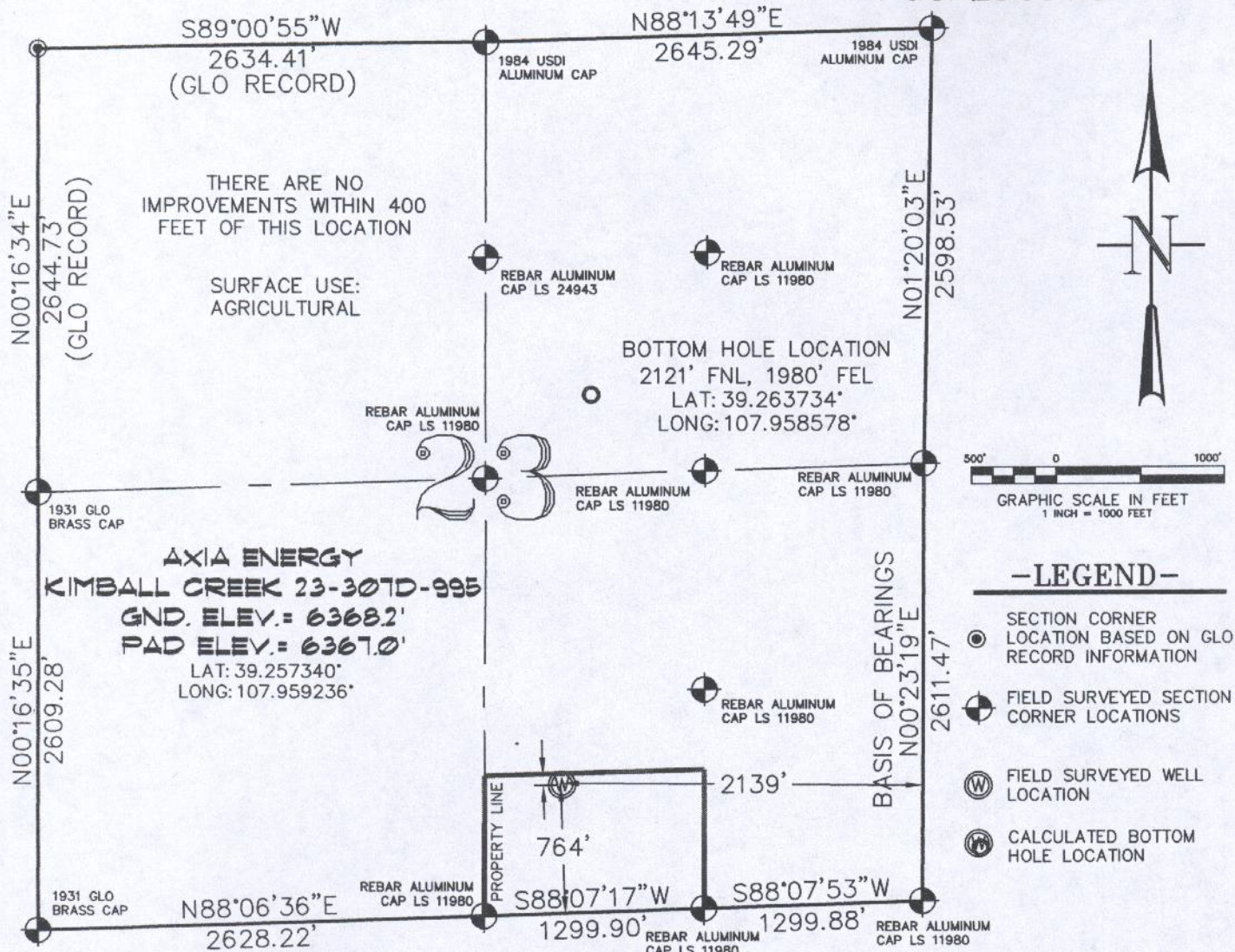


VIEW: 1G

SURVEYED: 08/23/10	SCALE: 1" = 1200'
DRAFTED: 10/12/10	DWG: Axia/KimballCreek234C995.dwg
CHECKED: 03/12/14	SHEET: 1 of 11



SEC. 23, T. 9 S., R. 95 W. OF THE 6TH P.M. Kimball Creek 23-4C-995  
Pad Location



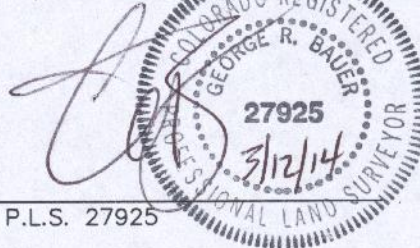
THIS WELL LOCATION PLAT WAS PREPARED FOR AXIA ENERGY TO LOCATE THE KIMBALL CREEK 23-307D-995 WELL, 764 FEET FROM THE SOUTH LINE AND 2139 FEET FROM THE EAST LINE IN THE SW1/4 SE1/4 OF SECTION 23, T. 9 S., R. 95 W. OF THE 6TH P.M. MESA COUNTY, COLORADO.

REFERENCE NOTES

- 1) T. 9 S., R. 95 W., 6TH P.M. GLO PLAT.
- 2) U.S.G.S. QUAD: HAWKHURST CREEK, CO
- 3) ELEVATIONS BASED ON N.A.V.D. 1988
- 4) LATITUDES AND LONGITUDES ARE BASED ON NAD 83, COLORADO CENTRAL ZONE.
- 5) GPS OPERATOR IVAN MARTIN, OBSERVED A PDOP OF 2.0.
- 6) ALL GPS OBSERVATIONS ARE IN COMPLIANCE WITH COGCC RULE NO. 215.
- 7) SURFACE AND BOTTOM HOLE LOCATIONS ARE MEASURED 90° FROM SECTION LINES.

SURVEYOR'S CERTIFICATE

I, George R. Bauer: a Professional Land Surveyor in the State of Colorado do hereby certify that this Survey was made under my direct supervision, and that this Plat represents said Survey.



COLORADO P.L.S. 27925



CONSTRUCTION SURVEYS, INC.  
0012 SUNRISE BLVD.  
SILT, CO 81652  
(970)876-5753

VIEW: 1A

SURVEYED: 08/23/10	SCALE: 1" = 1000'
DRAFTED: 08/30/10	DWG: Axia/KimballCreek234C995.dwg
REVISED: 03/12/14	SHEET: 1 of 11