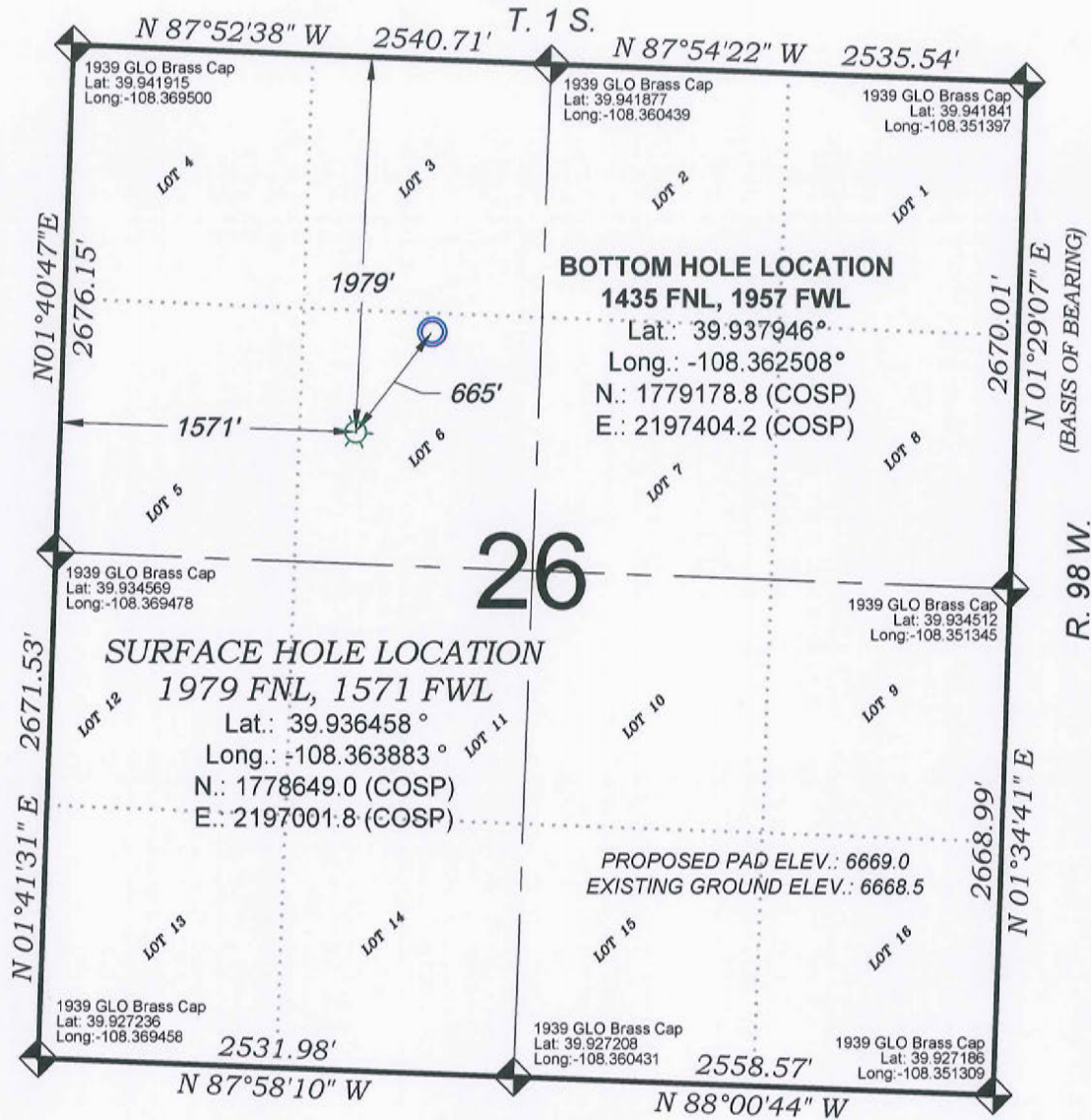


*Federal RGU 521-26-198*



0 500 1000  
GRAPHIC SCALE IN FEET  
1 INCH = 1000 FEET

### SURVEYORS STATEMENT

I, MICHAEL J. LANGHORNE, A REGISTERED LAND SURVEYOR IN THE STATE OF COLORADO DO HEREBY CERTIFY THAT THE SURVEY SHOWN HEREON WAS PREPARED UNDER MY DIRECT SUPERVISION AND HAS BEEN STAKED ON THE GROUND AS SHOWN ON THE PLAT AND CHECKING THAT THIS MAP IS A TRUE REPRESENTATION THEREOF.

MICHAEL J. LANGHORNE, COLORADO REGISTRATION NO. 36572  
FOR AND ON BEHALF OF  
BOOKCLIFF SURVEY SERVICES, INC.

## REFERENCES

- 2) U.S.G.S. QUAD: Square S Ranch, CO

THERE ARE NO VISIBLE  
IMPROVEMENTS WITHIN 500'  
OF THIS LOCATION

- LEGEND -

FIELD LOCATED SECTION  
MONUMENTS AS DESCRIBEDFIELD SURVEYED  
WELL LOCATION

### CALCULATED BOTTOM HOLE LOCATION

CALCULATED SECTION  
CORNER LOCATION

## NOTES

- 1) ELEVATIONS BASED ON N.A.V.D. 1988 PUBLISHED COORDINATES.
- 2) LATITUDES AND LONGITUDES ARE BASED ON NAD 83,  
PUBLISHED COORDINATES
- 3) STATE PLANE COORDINATES ARE BASED ON COLORADO  
CENTRAL ZONE, U.S. SURVEY FEET.
- 4) ELEVATION MASK SET TO 15°
- 5) GPS OPERATOR J. KIRKPATRICK, OBSERVED A PDOP OF 1.9 FOR  
SURVEY POINT NUMBER 179.
- 6) SURFACE AND BOTTOM HOLE LOCATIONS ARE MEASURED 90°  
FROM SECTION LINES.

**WELL LOCATION PLAT Prepared for:**  
**WPXENERGY.** WPX Energy Rocky Mountain, LLC

SE1/4 NW1/4, SECTION 26  
T. 1 S., R. 98 W. of the 6th. P.M.  
Rio BLANCO COUNTY, COLORADO



SURVEY DATE: 9/18/13  
 MAP DATE: 9/19/13  
 SCALE: 1" = 1000'  
 PLAT: 1 of 1  
 PROJECT: Highlands