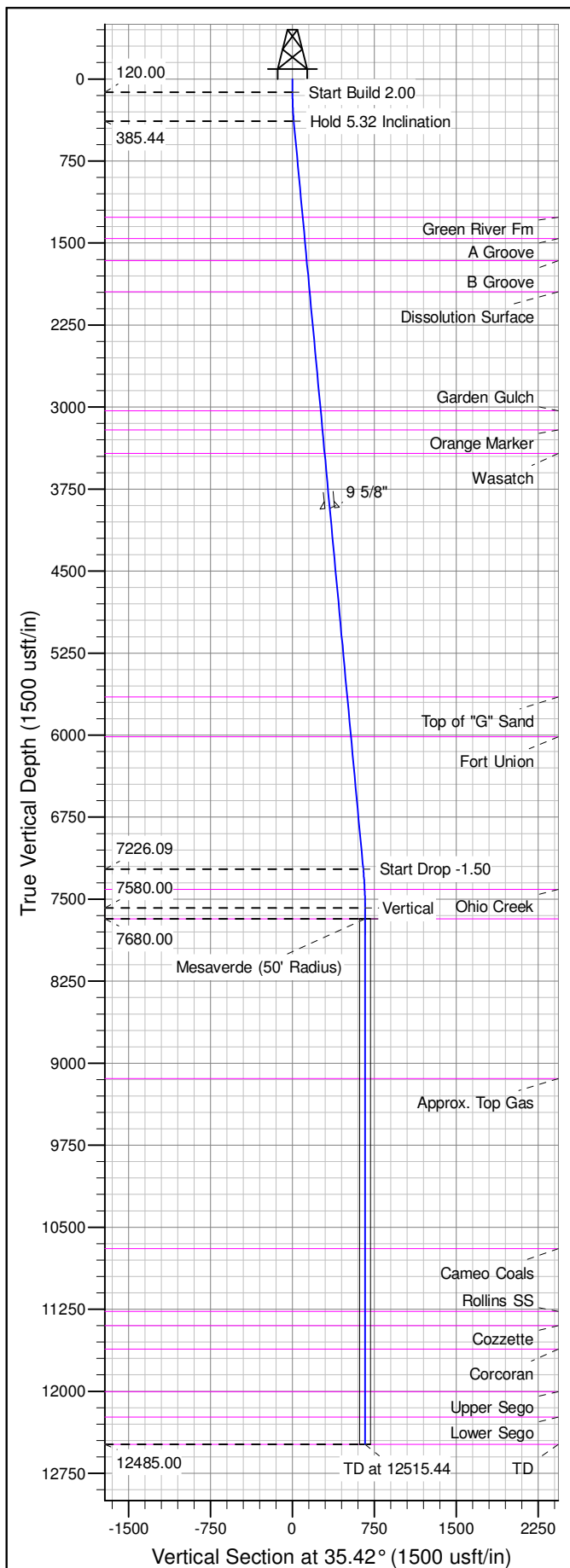
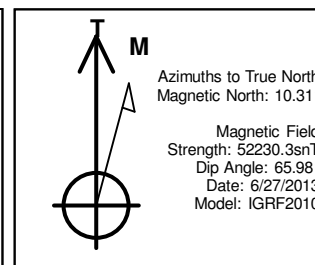
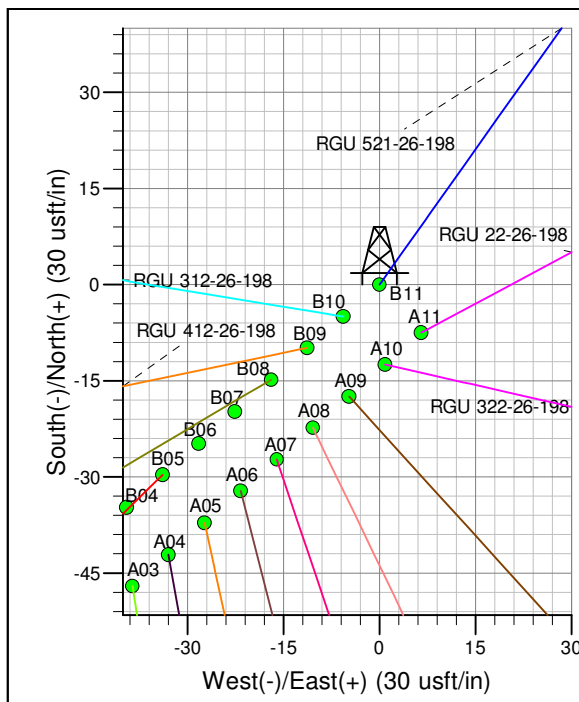
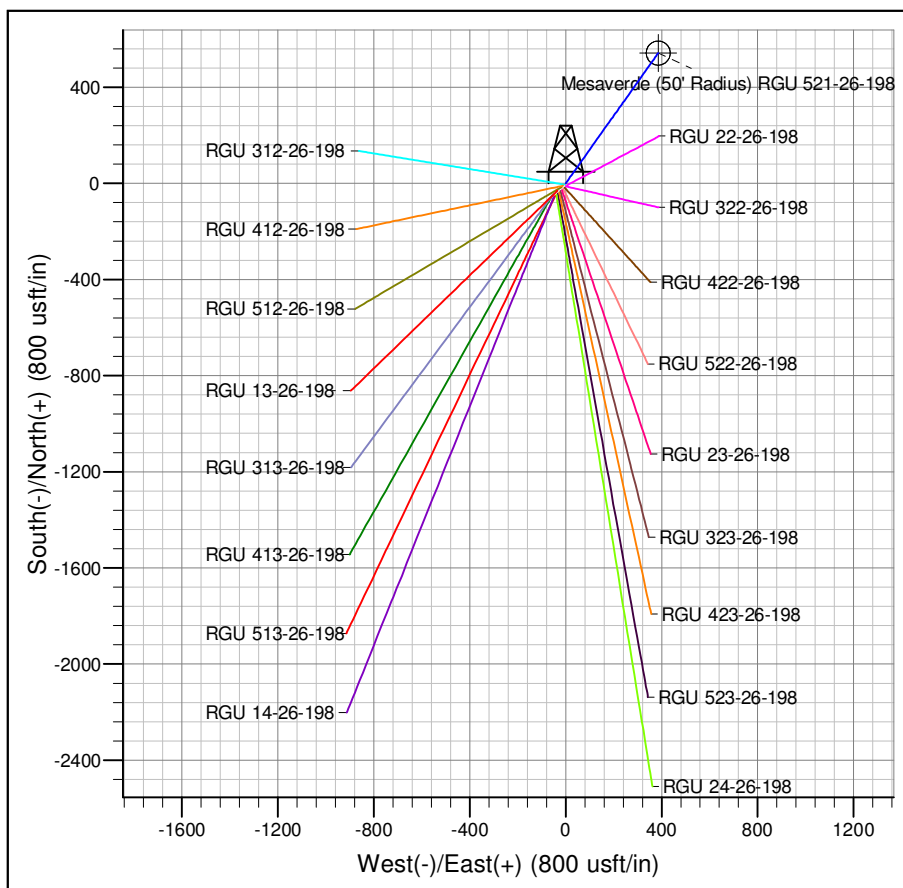




Well Name: RGU 521-26-198
Surface Location: RGU 22-26-198
North American Datum 1983 , US State Plane 1983 , Colorado Central Zone
Ground Elevation: 6669.00
+N/-S +E/-W Northing Easting Latitude Longitude Slot
0.00 0.00 1778649.00 2197001.80 39.93646 -108.36388 B11
KELLY BUSHING @ 6690.00usft (Cyclone 29 (21' RKB) kjs)



ANNOTATIONS									
TVD	MD	Inc	Azi	+N/-S	+E/-W	Vsect	Departure	Annotation	
120.00	120.00	0.00	0.00	0.00	0.00	0.00	0.00	Start Build 2.00	
385.44	385.82	5.32	35.42	10.04	7.14	12.32	12.32	Hold 5.32 Inclination	
7226.09	7256.02	5.32	35.42	528.82	376.02	648.88	648.88	Start Drop -1.50	
7580.00	7610.44	0.00	0.00	542.21	385.54	665.31	665.31	Vertical	
7680.00	7710.44	0.00	0.00	542.21	385.54	665.31	665.31	Mesaverde	
12485.00	12515.44	0.00	0.00	542.21	385.54	665.31	665.31	TD at 12515.44	



Project: RG 26-01S-098W
Site: RGU 22-26-198
Well: RGU 521-26-198
Design #2 24Feb14 kjs