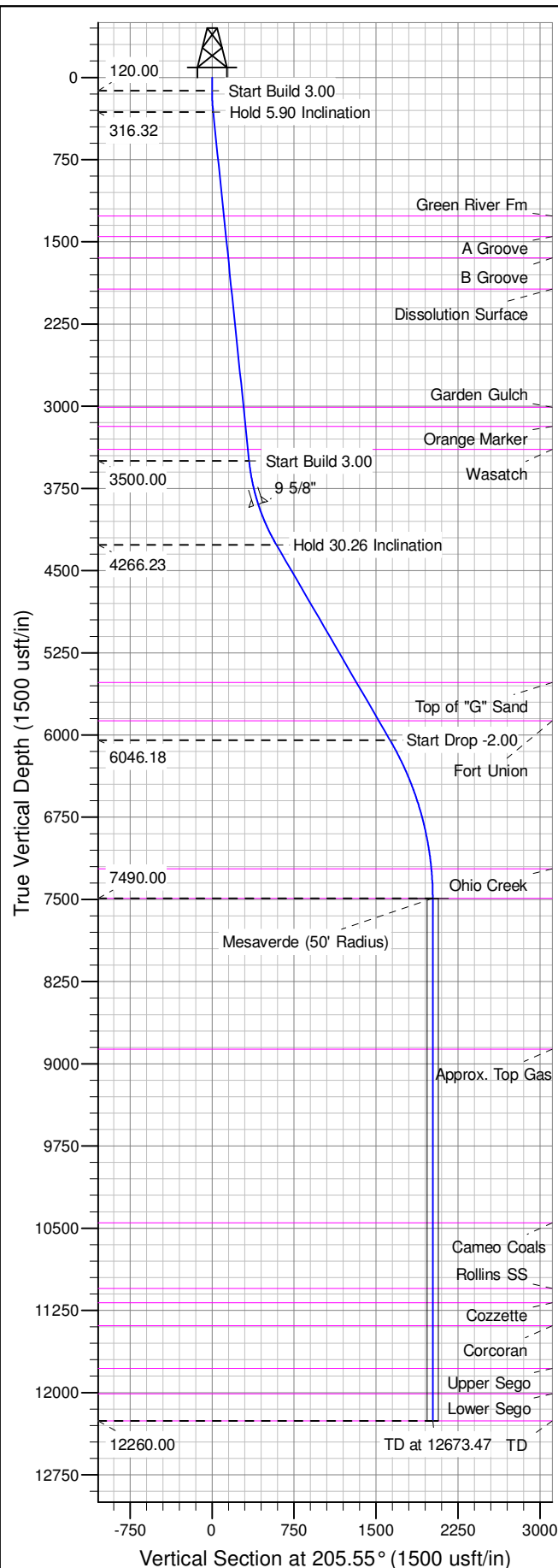
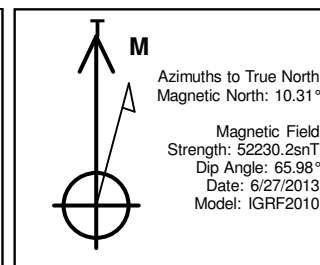
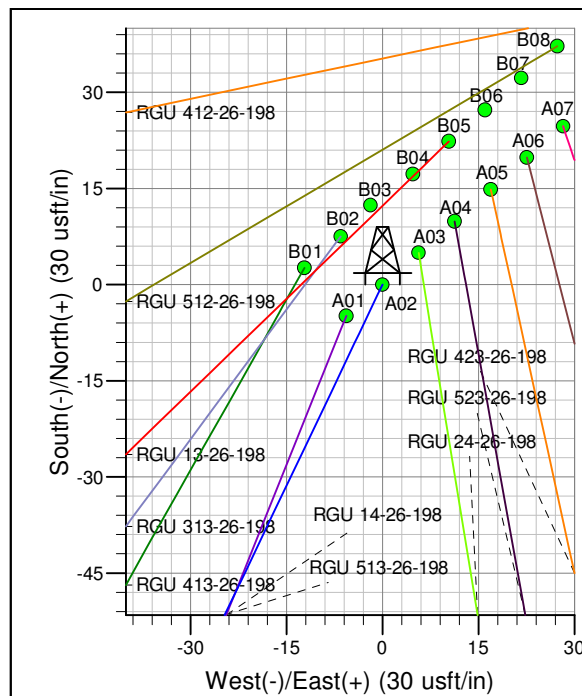
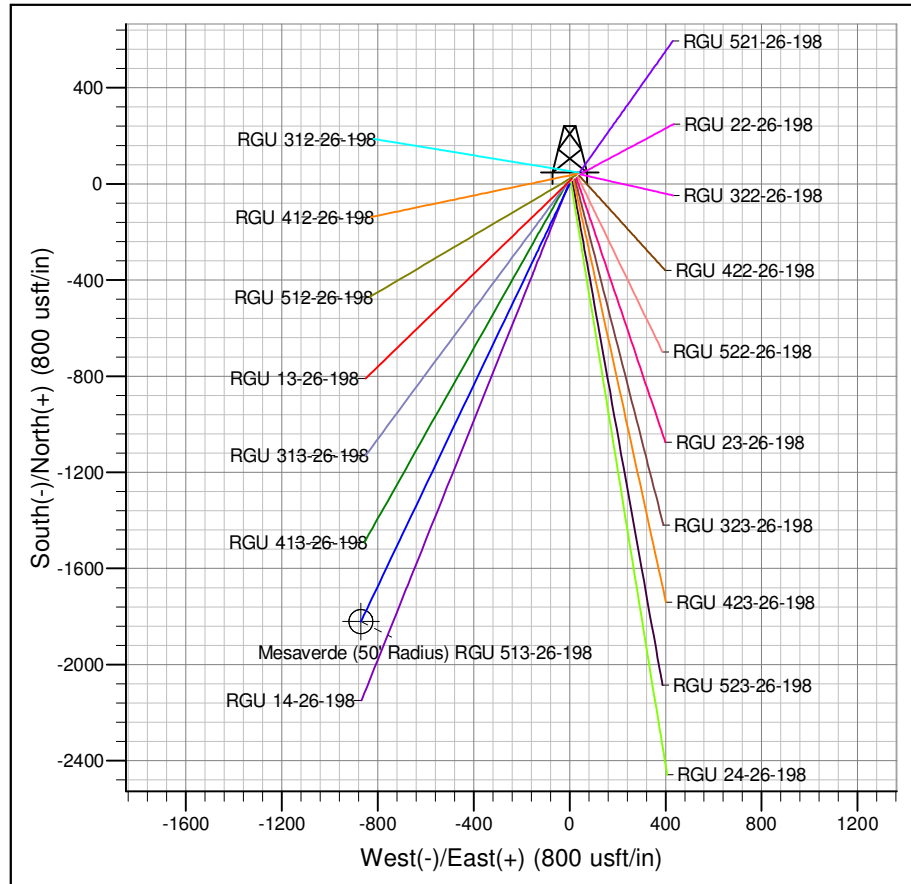




Well Name: RGU 513-26-198
Surface Location: RGU 22-26-198
North American Datum 1983 , US State Plane 1983 , Colorado Central Zone
Ground Elevation: 6669.00
+N/-S +E/-W Northing Easting Latitude Longitude Slot
0.00 0.00 1778598.40 2196955.90 39.93631 -108.36404 A02
KELLY BUSHING @ 6690.00usft (Cyclone 29 (21' RKB) kjs)



ANNOTATIONS									
TVD	MD	Inc	Azi	+N/-S	+E/-W	Vsect	Departure	Annotation	
120.00	120.00	0.00	0.00	0.00	0.00	0.00	0.00	0.00	Start Build 3.00
316.32	316.67	5.90	205.55	-9.13	-4.36	10.12	10.12	10.12	Hold 5.90 Inclination
3500.00	3517.30	5.90	205.55	-305.96	-146.26	339.12	339.12	339.12	Start Build 3.00
4266.23	4329.44	30.26	205.55	-531.68	-254.15	589.29	589.29	589.29	Hold 30.26 Inclination
6046.18	6390.26	30.26	205.55	-1468.77	-702.03	1627.92	1627.92	1627.92	Start Drop -2.00
7490.00	7903.47	0.00	0.00	-1821.04	-870.40	2018.36	2018.36	2018.36	Mesaverde
12260.00	12673.47	0.00	0.00	-1821.04	-870.40	2018.36	2018.36	2018.36	TD at 12673.47



Project: RG 26-01S-098W
Site: RGU 22-26-198
Well: RGU 513-26-198
Design #2 24Feb14 kjs