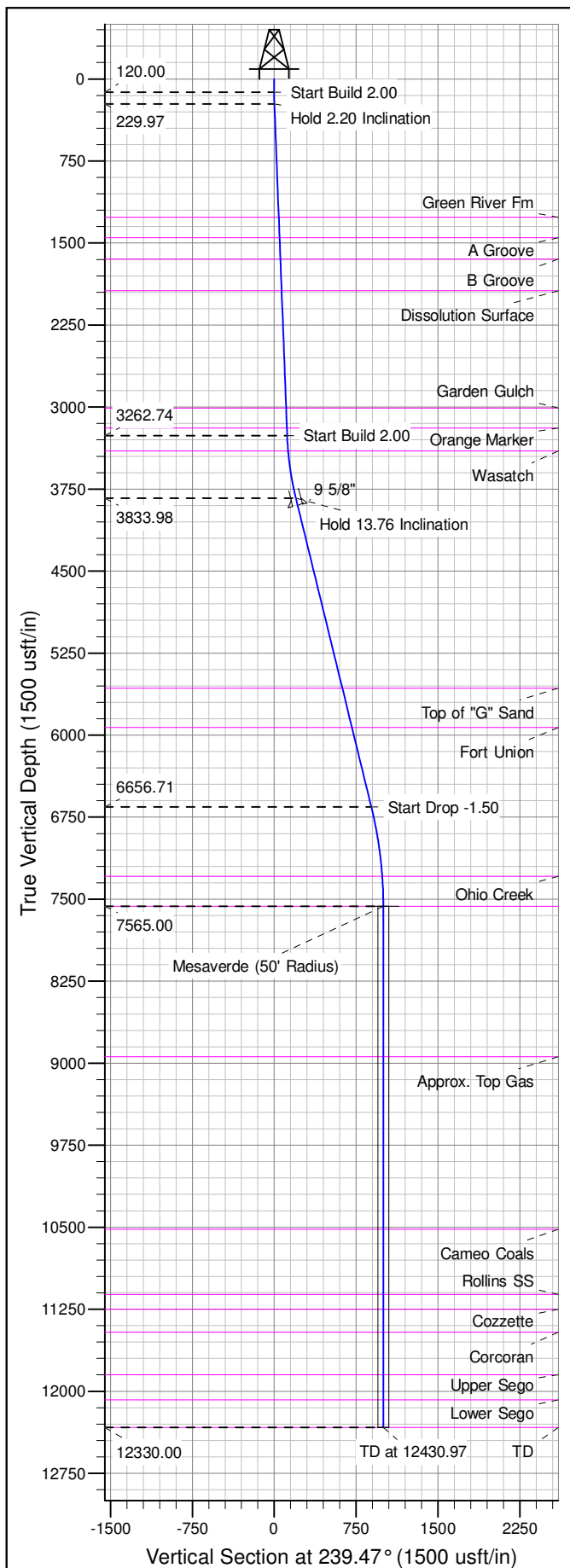
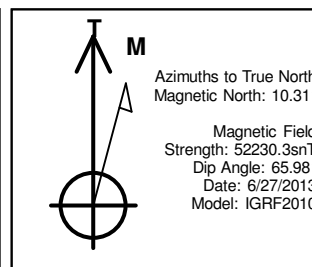
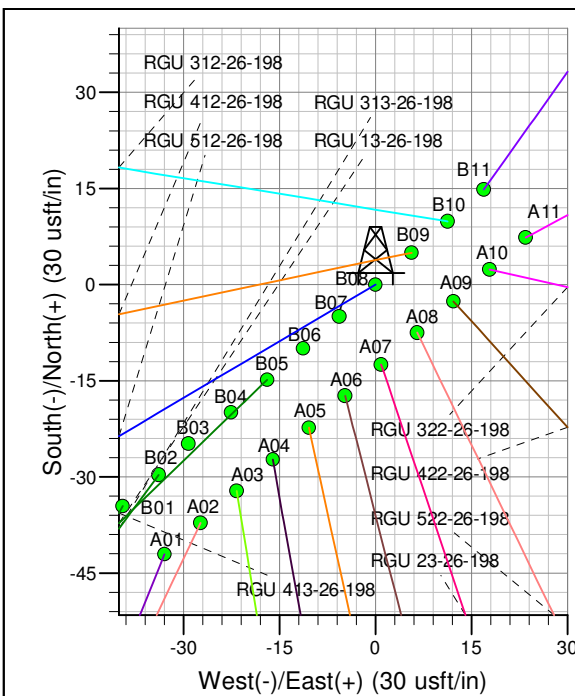
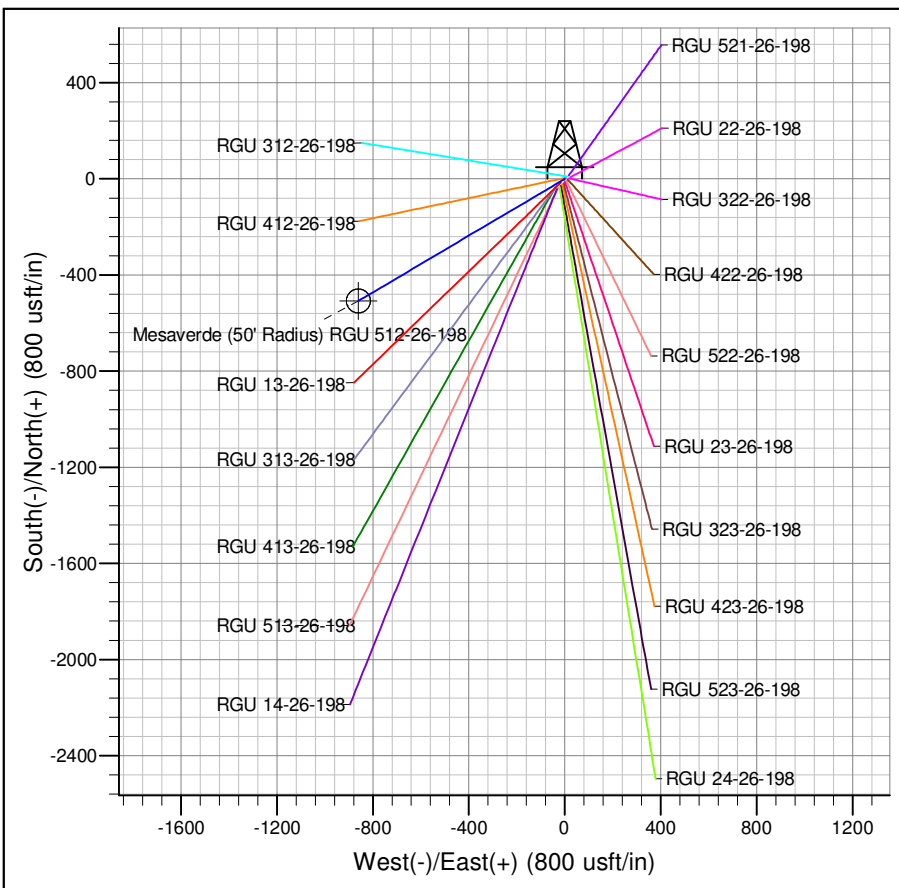




Well Name: RGU 512-26-198
Surface Location: RGU 22-26-198
North American Datum 1983 , US State Plane 1983 , Colorado Central Zone
Ground Elevation: 6669.00
+N/-S +E/-W Northing Easting Latitude Longitude Slot
0.00 0.00 1778634.70 2196984.40 39.93642 -108.36394 B08
KELLY BUSHING @ 6690.00usft (Cyclone 29 (21' RKB) kjs)



ANNOTATIONS									
TVD	MD	Inc	Azi	+N/-S	+E/-W	VSec	Departure	Annotation	
120.00	120.00	0.00	0.00	0.00	0.00	0.00	0.00	0.00	Start Build 2.00
229.97	230.00	2.20	239.47	-1.07	-1.82	2.11	2.11	2.11	Hold 2.20 Inclination
3262.74	3265.00	2.20	239.47	-60.26	-102.17	118.62	118.62	118.62	Start Build 2.00
3833.98	3842.80	13.76	239.47	-100.93	-171.13	198.68	198.68	198.68	Hold 13.76 Inclination
6656.71	6748.89	13.76	239.47	-451.99	-766.35	889.71	889.71	889.71	Start Drop -1.50
7565.00	7665.97	0.00	0.00	-507.65	-860.72	999.28	999.28	999.28	Mesaverde
12330.00	12430.97	0.00	0.00	-507.65	-860.72	999.28	999.28	999.28	TD at 12430.97



Project: RG 26-01S-098W
Site: RGU 22-26-198
Well: RGU 512-26-198
Design #2 24Feb14 kjs