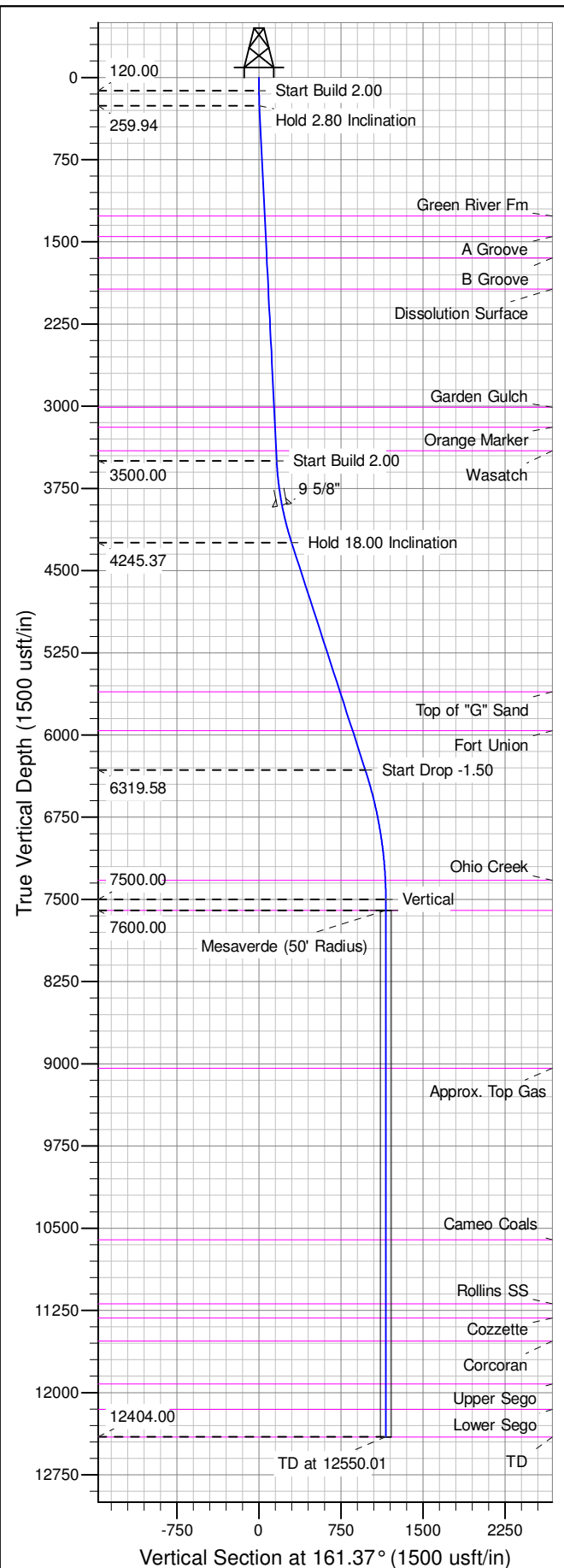
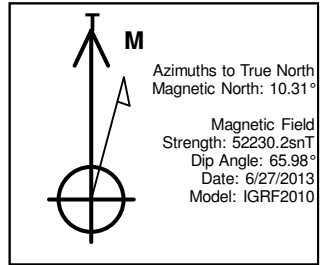
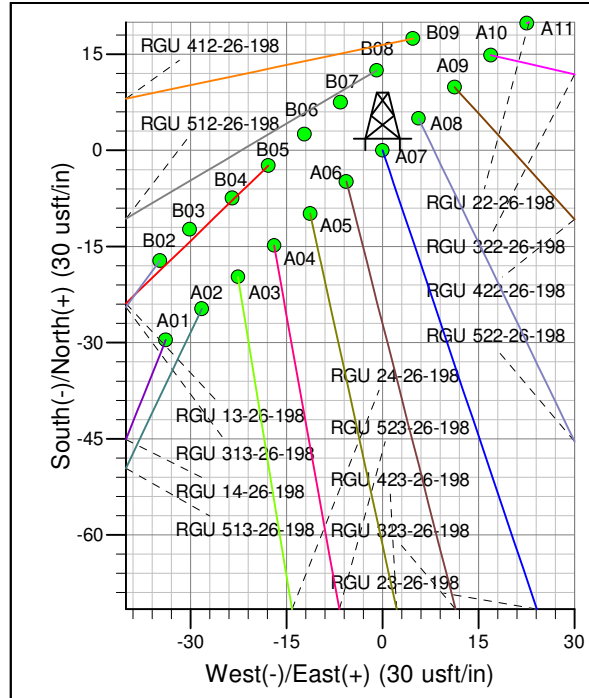
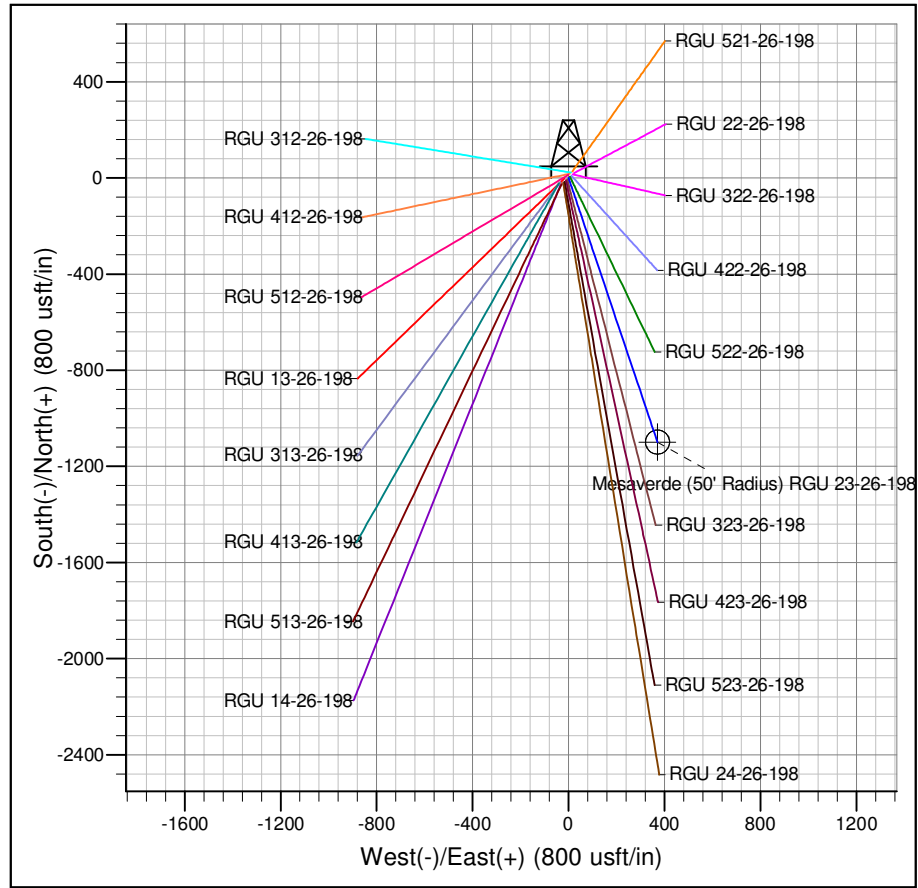




Well Name: RGU 23-26-198  
Surface Location: RGU 22-26-198  
North American Datum 1983 , US State Plane 1983 , Colorado Central Zone  
Ground Elevation: 6669.00  
+N/-S +E/-W Northing Easting Latitude Longitude Slot  
0.00 0.00 1778622.20 2196984.90 39.93638 -108.36394 A07  
KELLY BUSHING @ 6690.00usft (Cyclone 29 (21' RKB) kjs)



ANNOTATIONS									
TVD	MD	Inc	Azi	+N/-S	+E/-W	Vsect	Departure	Annotation	
120.00	120.00	0.00	0.00	0.00	0.00	0.00	0.00	Start Build 2.00	
259.94	260.00	2.80	161.37	-3.24	1.09	3.42	3.42	Hold 2.80 Inclination	
3500.00	3503.93	2.80	161.37	-153.40	51.72	161.89	161.89	Start Build 2.00	
4245.37	4263.98	18.00	161.37	-283.04	95.41	298.69	298.69	Hold 18.00 Inclination	
6319.58	6444.94	18.00	161.37	-921.73	310.68	972.68	972.68	Start Drop -1.50	
7500.00	7645.01	0.00	0.00	-1098.91	370.40	1159.65	1159.65	Vertical	
7600.00	7745.01	0.00	0.00	-1098.91	370.40	1159.65	1159.65	Mesaverde	
12404.00	12549.01	0.00	0.00	-1098.91	370.40	1159.65	1159.65	TD at 12550.01	



Project: RG 26-01S-098W  
Site: RGU 22-26-198  
Well: RGU 23-26-198  
Design #2 24Feb14 kjs