



Well Name: RGU 423-26-198
Surface Location: RGU 22-26-198
North American Datum 1983 , US State Plane 1983 , Colorado Central Zone
Ground Elevation: 6669.00
Northing 1778612.70 Easting 2196973.30 Latitude 39.93636 Longitude -108.36398 Slot A05
KELLY BUSHING @ 6690.00usft (Cyclone 29 (21' RKB) kjs)

+N/-S
0.00

+E/-W
0.00

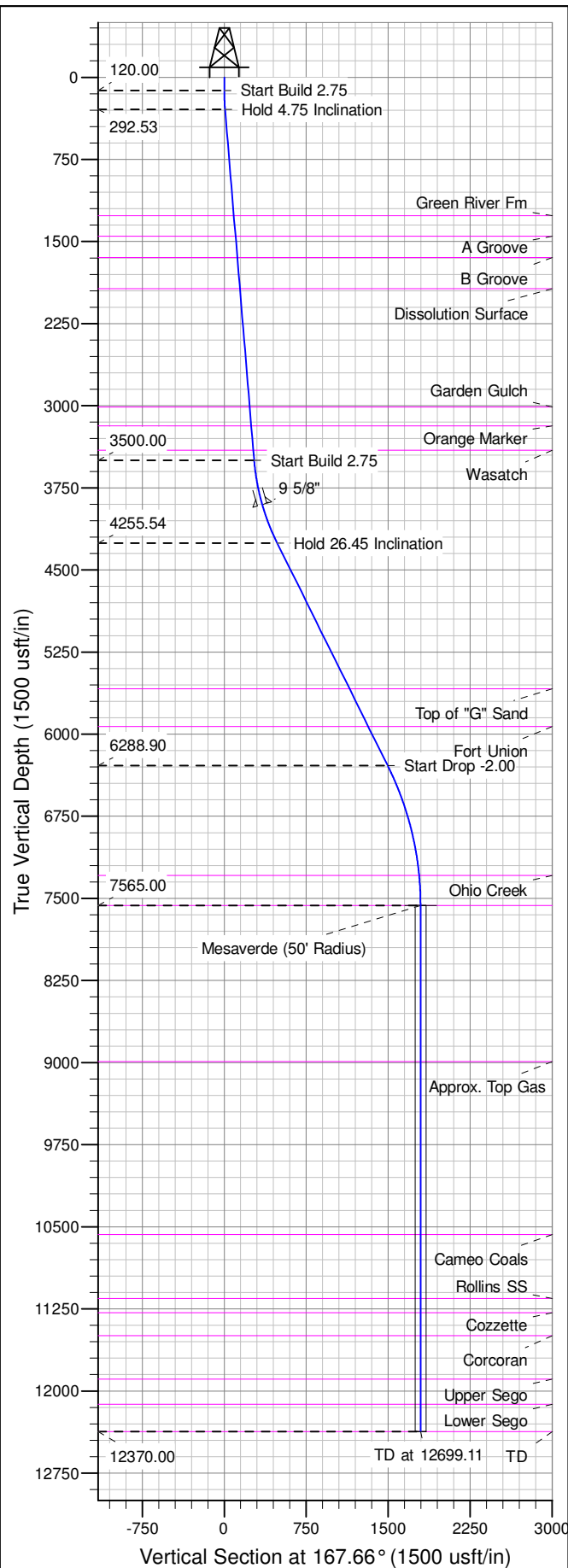
Northing
1778612.70

Easting
2196973.30

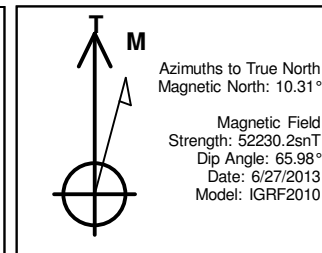
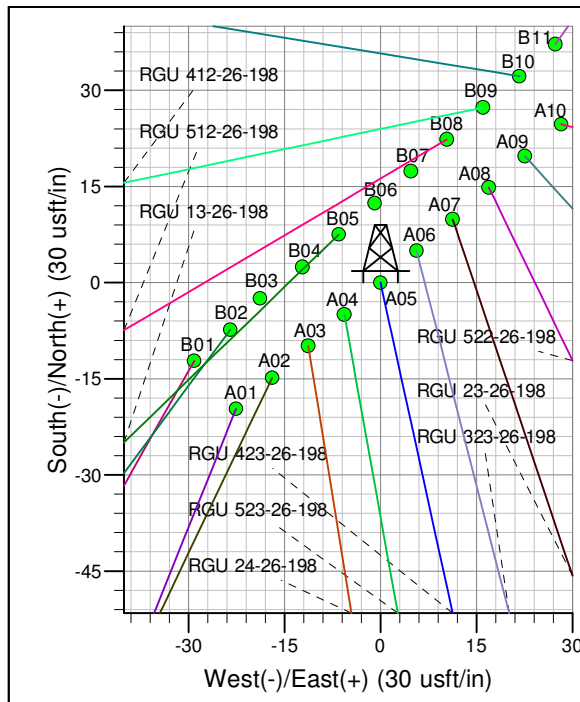
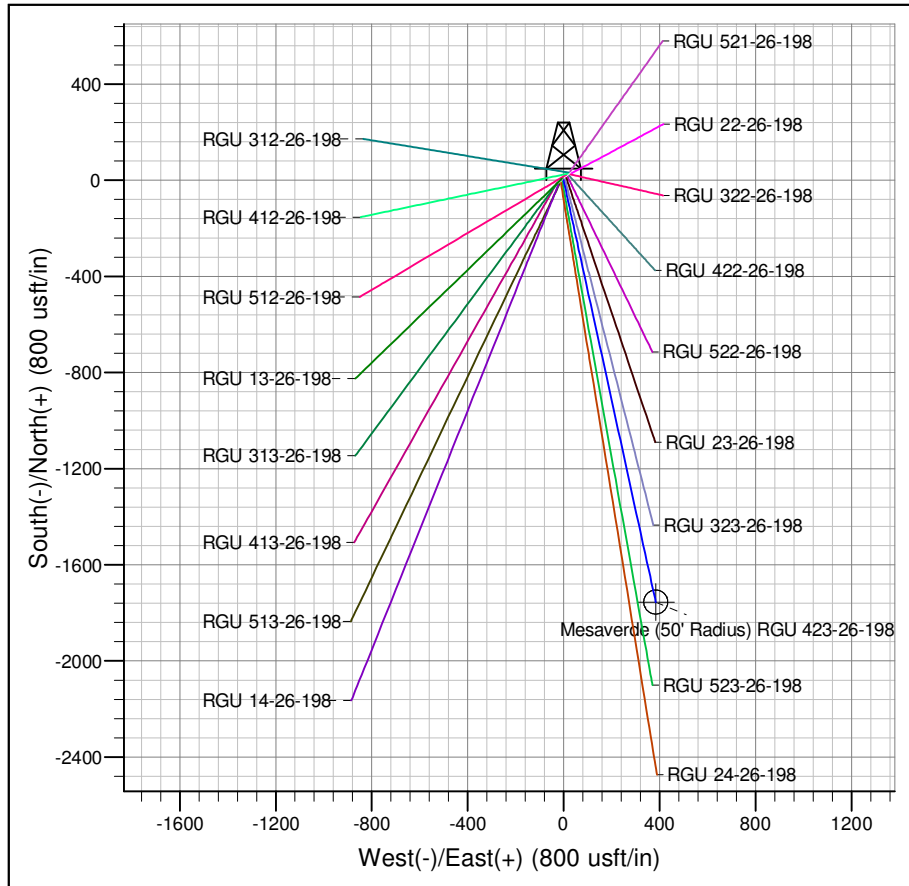
Latitude
39.93636

Longitude
-108.36398

Slot
A05



ANNOTATIONS									
TVD	MD	Inc	Azi	+N/-S	+E/-W	Vsect	Departure	Annotation	
120.00	120.00	0.00	0.00	0.00	0.00	0.00	0.00	0.00	Start Build 2.75
292.53	292.73	4.75	167.66	-6.99	1.53	7.16	7.16	7.16	Hold 4.75 Inclination
3500.00	3511.25	4.75	167.66	-267.35	58.49	273.68	273.68	273.68	Start Build 2.75
4255.54	4300.40	26.45	167.66	-473.44	103.58	484.64	484.64	484.64	Hold 26.45 Inclination
6288.90	6571.52	26.45	167.66	-1461.72	319.81	1496.29	1496.29	1496.29	Start Drop -2.00
7565.00	7894.11	0.00	0.00	-1754.70	383.91	1796.21	1796.21	1796.21	Mesaverde
12370.00	12699.11	0.00	0.00	-1754.70	383.91	1796.21	1796.21	1796.21	TD at 12699.11



Project: RG 26-01S-098W
Site: RGU 22-26-198
Well: RGU 423-26-198
Design #2 24Feb14 kjs