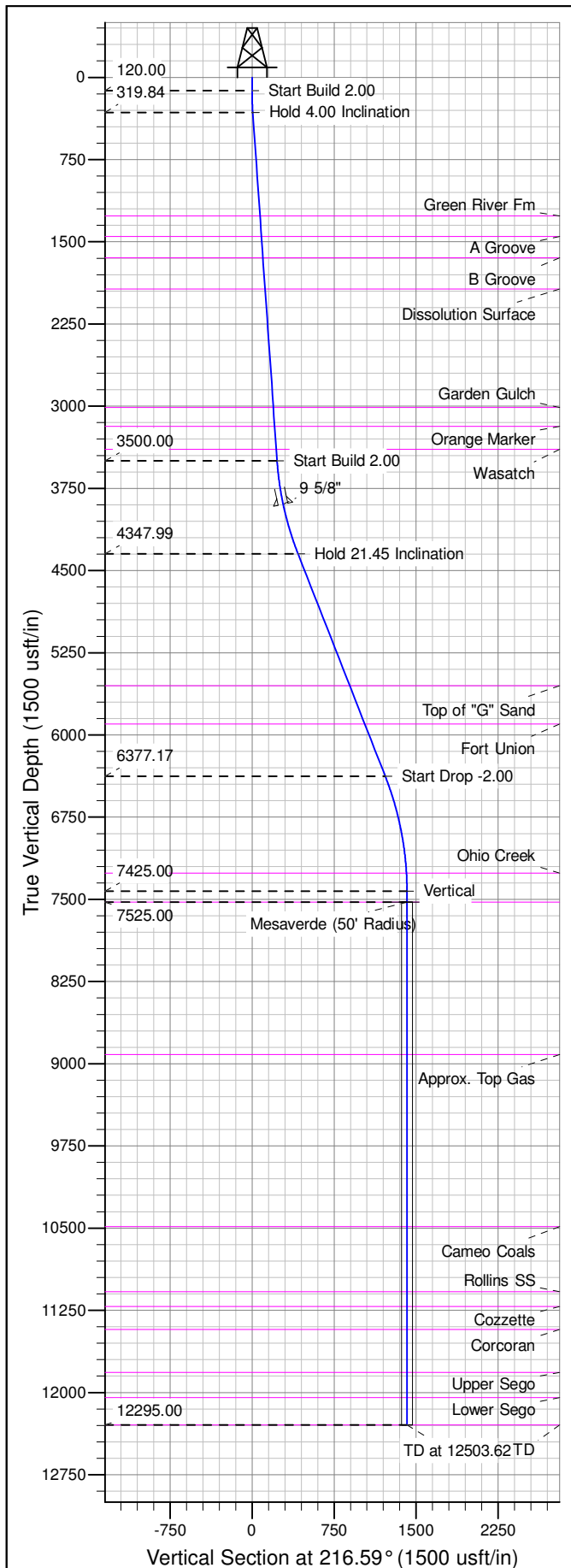




Well Name: RGU 313-26-198
Surface Location: RGU 22-26-198
North American Datum 1983 , US State Plane 1983 , Colorado Central Zone
Ground Elevation: 6669.00
+N/-S +E/-W Northing Easting Latitude Longitude Slot
0.00 0.00 1778606.10 2196949.60 39.93634 -108.36406 B02
KELLY BUSHING @ 6690.00usft (Cyclone 29 (21' RKB) kjs)



ANNOTATIONS									
TVD	MD	Inc	Azi	+N/-S	+E/-W	Vsect	Departure	Annotation	
120.00	120.00	0.00	0.00	0.00	0.00	0.00	0.00	Start Build 2.00	
319.84	320.00	4.00	216.59	-5.60	-4.16	6.98	6.98	Hold 4.00 Inclination	
3500.00	3507.93	4.00	216.59	-184.16	-136.72	229.36	229.36	Start Build 2.00	
4347.99	4380.65	21.45	216.59	-337.93	-250.88	420.88	420.88	Hold 21.45 Inclination	
6377.17	6560.91	21.45	216.59	-978.22	-726.24	1218.33	1218.33	Start Drop -2.00	
7425.00	7633.62	0.00	0.00	-1137.60	-844.56	1416.84	1416.84	Vertical	
7525.00	7733.62	0.00	0.00	-1137.60	-844.56	1416.84	1416.84	Mesaverde	
12295.00	12503.62	0.00	0.00	-1137.60	-844.56	1416.84	1416.84	TD at 12503.62	

