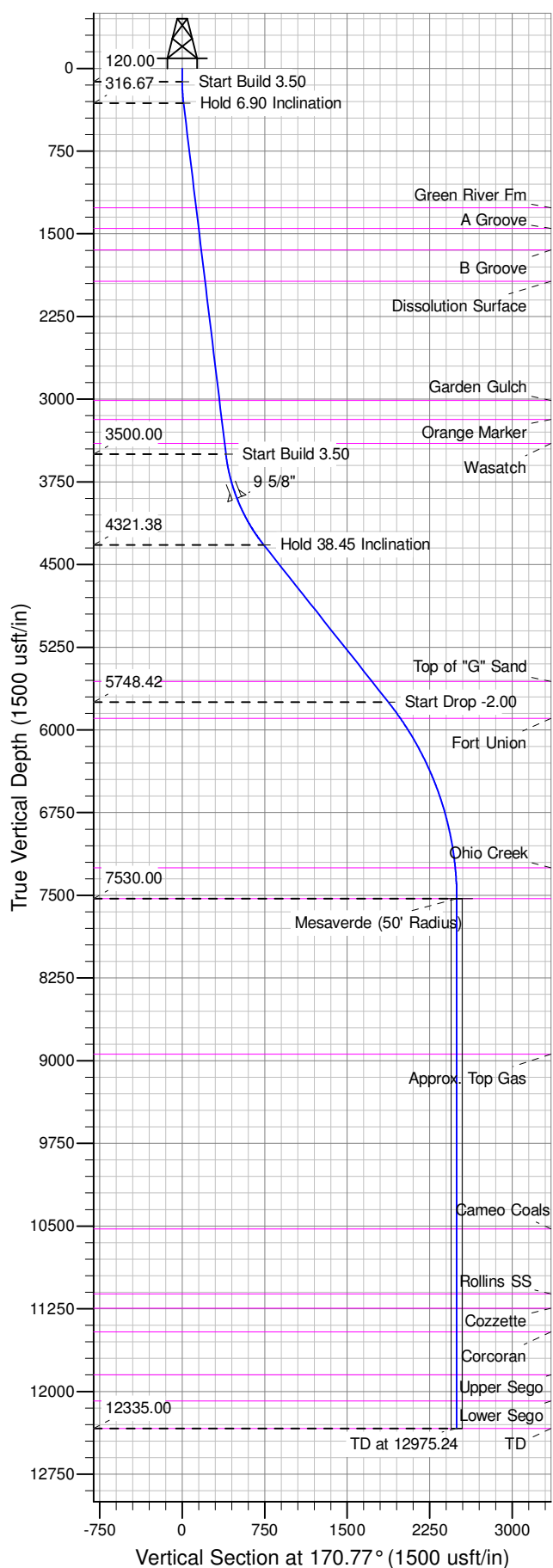




Well Name: RGU 24-26-198  
Surface Location: RGU 22-26-198  
North American Datum 1983 , US State Plane 1983 , Colorado Central Zone  
Ground Elevation: 6669.00  
+N/-S +E/-W Northing Easting Latitude Longitude Slot  
0.00 0.00 1778603.20 2196961.70 39.93633 -108.36402 A03  
KELLY BUSHING @ 6690.00usft (Cyclone 29(21' RKB) kjs)



ANNOTATIONS									
TVD	MD	Inc	Azi	+N/-S	+E/-W	Vsect	Departure	Annotation	
120.00	120.00	0.00	0.00	0.00	0.00	0.00	0.00	Start Build 3.50	
316.67	317.14	6.90	170.77	-11.70	1.90	11.86	11.86	Hold 6.90 Inclination	
3500.00	3523.70	6.90	170.77	-391.94	63.69	397.08	397.08	Start Build 3.50	
4321.38	4425.25	38.45	170.77	-730.70	118.74	740.29	740.29	Hold 38.45 Inclination	
5748.42	6247.53	38.45	170.77	-1849.29	300.52	1873.54	1873.54	Start Drop -2.00	
7530.00	8170.24	0.00	0.00	-2462.60	400.18	2494.90	2494.90	Mesaverde	
12335.00	12975.24	0.00	0.00	-2462.60	400.18	2494.90	2494.90	TD at 12975.24	

