

BONANZA CREEK ENERGY INC.

WELD COUNTY, COLORADO (NAD 83)

NW NW SEC. 22 T5N R61W 6th P.M.

PRONGHORN 11-14-22HNB

ORIGINAL WELLBORE

25 March, 2014

Plan: PROPOSAL #1



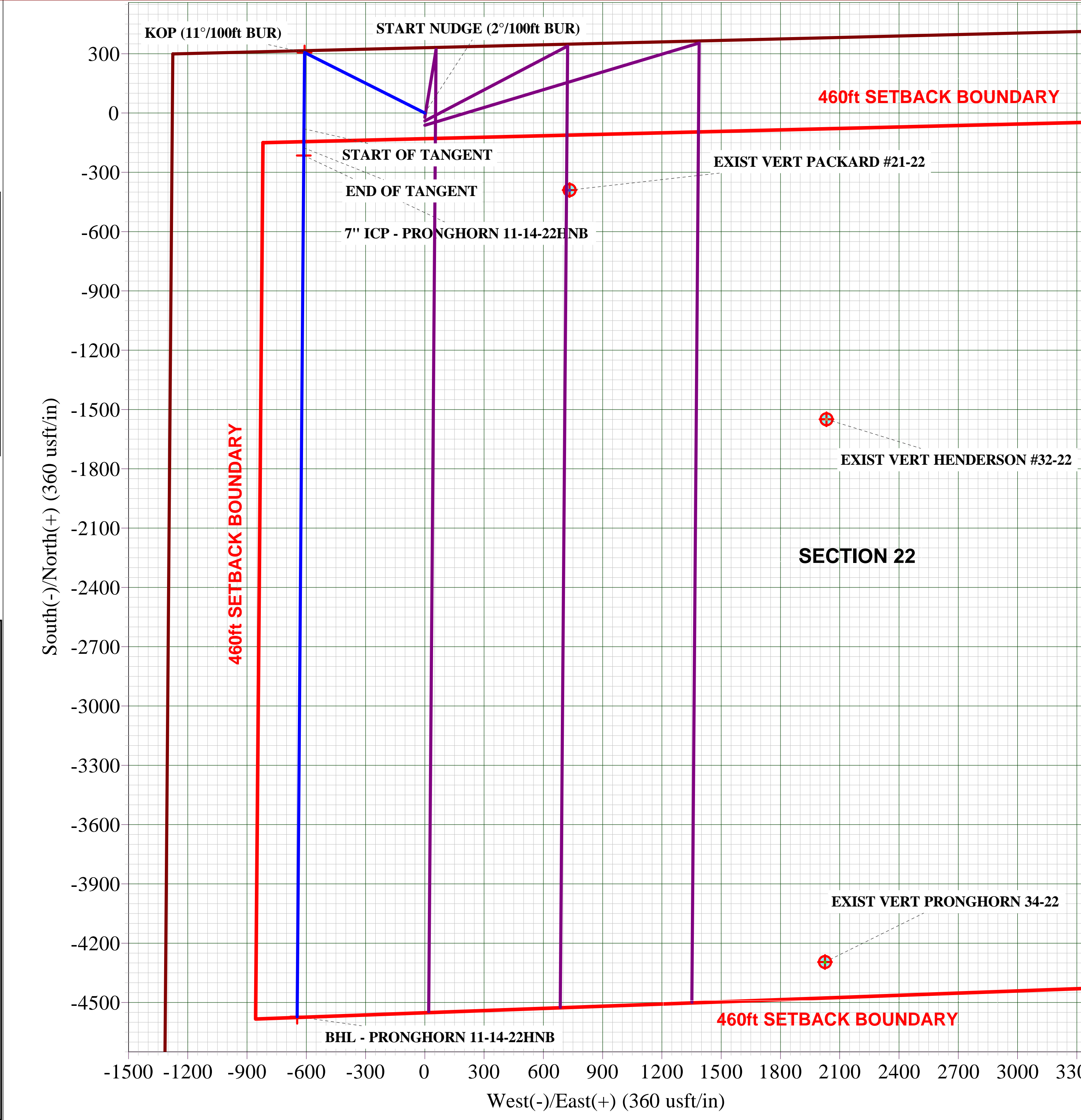
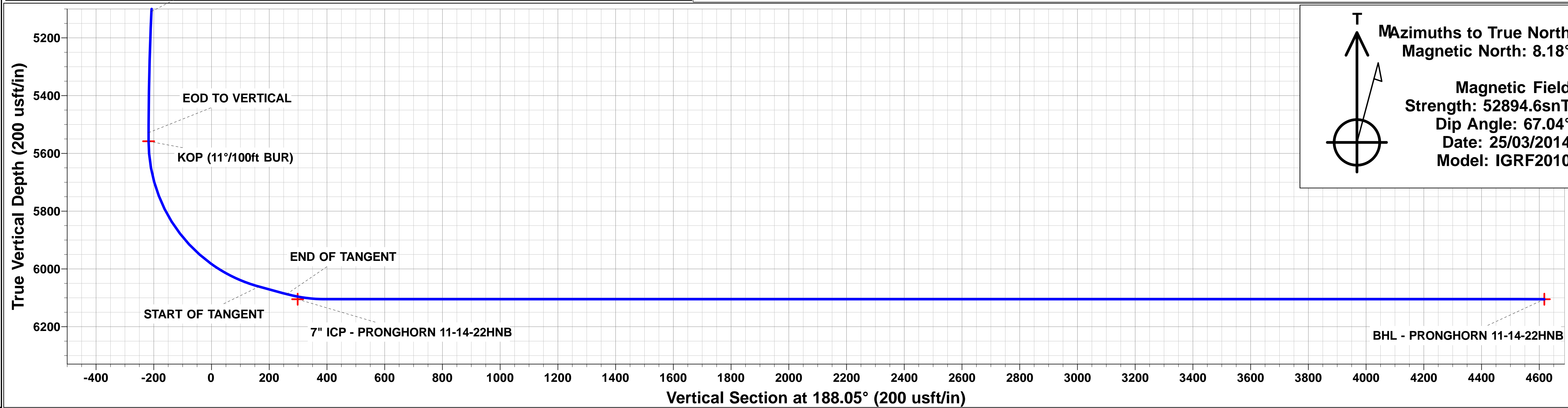
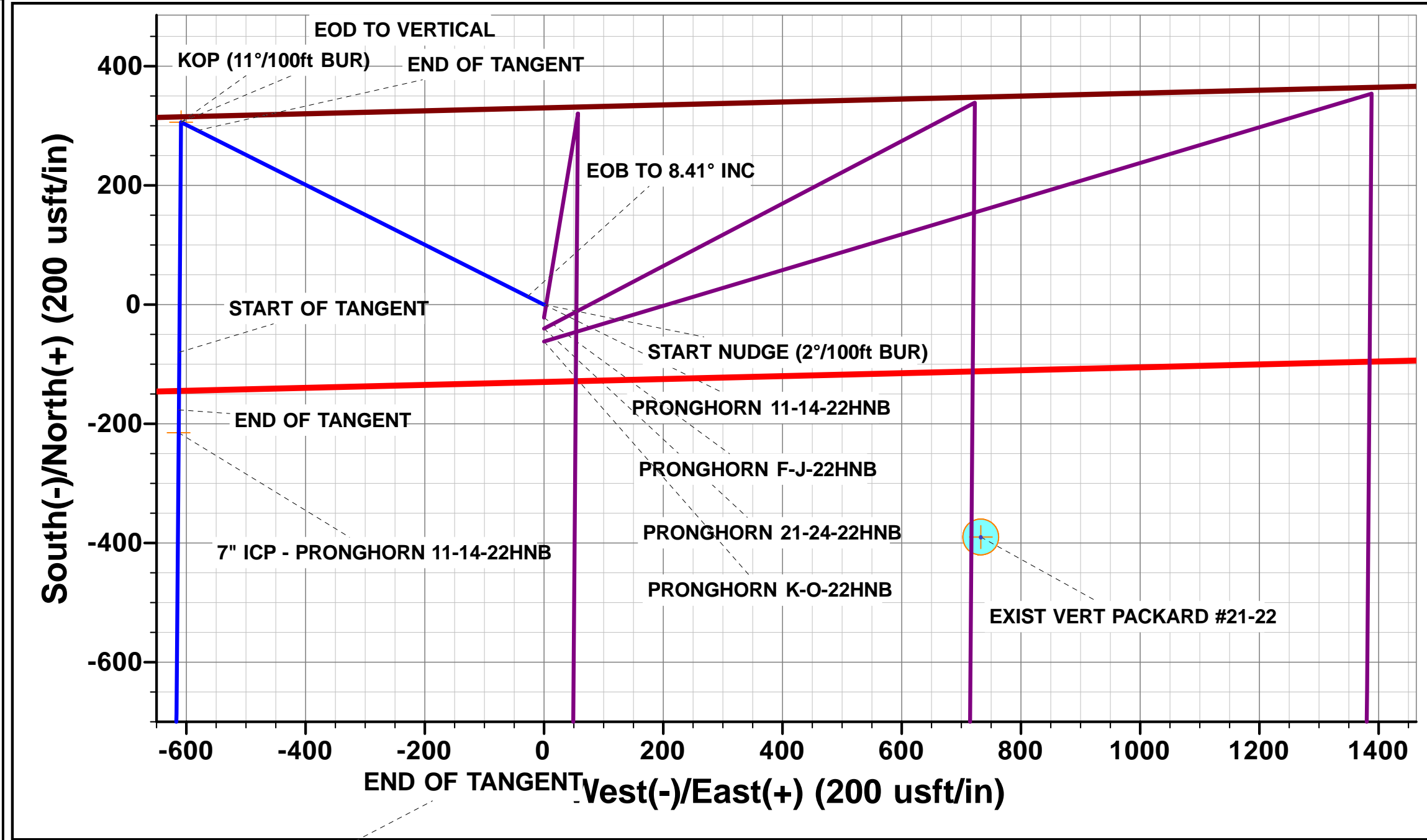
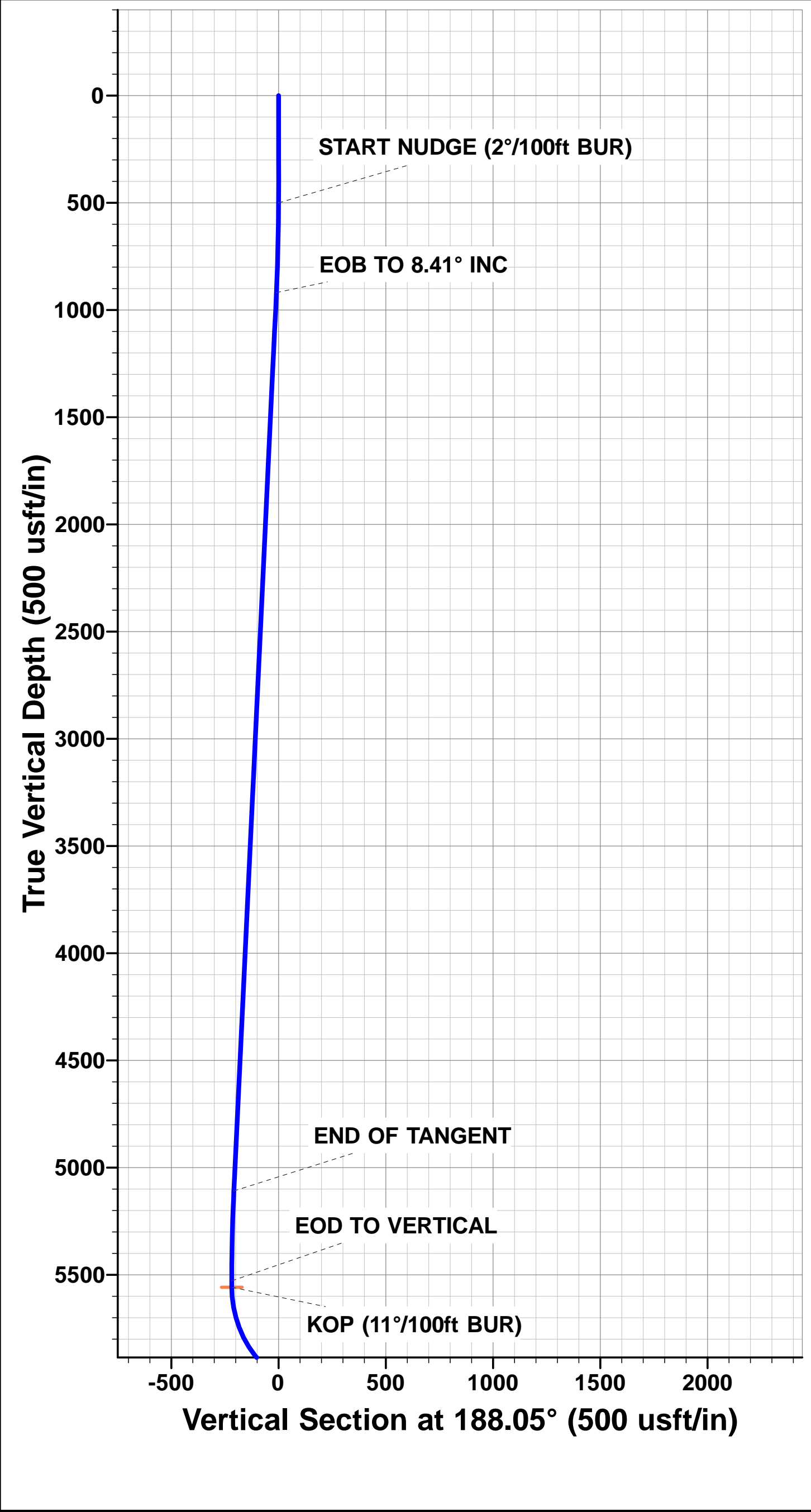


Project: WELD COUNTY, COLORADO (NAD 83)
Site: NW NW SEC. 22 T5N R61W 6th P.M.
Well: PRONGHORN 11-14-22HNB
Wellbore: ORIGINAL WELLBORE
Design: PROPOSAL #1

ANNOTATIONS									
TVD	MD	Inc	Azi	+N/-S	+E/-W	VSec	Dep	Annotation	
500.0	500.0	0.00	0.00	0.0	0.0	0.0	0.0	START NUDGE (2°/100ft BUR)	
919.2	920.7	8.41	296.69	13.9	-27.5	-9.9	30.8	EOB TO 8.41° INC	
5109.0	5156.1	8.41	296.69	292.2	-581.3	-208.0	650.6	END OF TANGENT	
5528.2	5576.8	0.00	0.00	306.1	-608.8	-217.9	681.4	EOD TO VERTICAL	
5558.2	5606.8	0.00	0.00	306.1	-608.8	-217.9	681.4	KOP (11°/100ft BUR)	
6061.3	6288.6	75.00	180.44	-79.9	-611.8	164.8	1067.5	START OF TANGENT	
6087.2	6388.6	75.00	180.44	-176.5	-612.5	260.5	1164.1	END OF TANGENT	
6105.0	6525.0	90.00	180.44	-311.3	-613.5	394.2	1298.9	ICP*NEW* - PRONGHORN 11-14-22HNB	
6105.0	10785.9	90.00	180.44	-4572.1	-646.4	4617.5	5559.7	BHL - PRONGHORN 11-14-22HNB	

LOCAL COORDINATES:	
SHL: 332ft FNL & 1279ft FWL Sec 22	
7" ICP *NEW*: ft 627.4ft FNL & 667ft FWL Sec 22	
BHL: 470ft FSL & 667ft FWL Sec 22	

WELLBORE TARGET DETAILS (LAT/LONG)					
Name	TVD	+N/-S	+E/-W	Latitude	Longitude
KOP - PRONGHORN 11-14-22HNB	5558.2	306.1	-608.8	40.393600	-104.202036
BHL - PRONGHORN 11-14-22HNB	6105.0	-4572.1	-646.4	40.380210	-104.202170
7" ICP - PRONGHORN 11-14-22HNB	6105.0	-214.9	-612.8	40.392170	-104.202050



Mazimuths to True North
Magnetic North: 8.18°

Magnetic Field
Strength: 52894.6snT
Dip Angle: 67.04°
Date: 25/03/2014
Model: IGRF2010

Planning Report



Database:	EDM 5000.1 Single User Db	Local Co-ordinate Reference:	Well PRONGHORN 11-14-22HNB
Company:	BONANZA CREEK ENERGY INC.	TVD Reference:	KB-EST @ 4678.0usft (Original Well Elev)
Project:	WELD COUNTY, COLORADO (NAD 83)	MD Reference:	KB-EST @ 4678.0usft (Original Well Elev)
Site:	NW NW SEC. 22 T5N R61W 6th P.M.	North Reference:	True
Well:	PRONGHORN 11-14-22HNB	Survey Calculation Method:	Minimum Curvature
Wellbore:	ORIGINAL WELLBORE		
Design:	PROPOSAL #1		

Project	WELD COUNTY, COLORADO (NAD 83)		
Map System:	US State Plane 1983	System Datum:	Mean Sea Level
Geo Datum:	North American Datum 1983		
Map Zone:	Colorado Northern Zone		Using geodetic scale factor

Site		NW NW SEC. 22 T5N R61W 6th P.M.			
Site Position:		Northing:	1,388,515.79 usft	Latitude:	40.392590
From:	Lat/Long	Easting:	3,362,131.84 usft	Longitude:	-104.199850
Position Uncertainty:	0.0 usft	Slot Radius:	1.10000ft	Grid Convergence:	0.84 °

Well	PRONGHORN 11-14-22HNB					
Well Position	+N/-S	61.9 usft	Northing:	1,388,577.70 usft	Latitude:	40.392760
	+E/-W	0.0 usft	Easting:	3,362,130.94 usft	Longitude:	-104.199850
Position Uncertainty		0.0 usft	Wellhead Elevation:	usft	Ground Level:	4,661.0 usft

Wellbore	ORIGINAL WELLBORE				
Magnetics	Model Name	Sample Date	Declination (°)	Dip Angle (°)	Field Strength (nT)
	IGRF2010	25/03/2014	8.18	67.04	52,895

Design	PROPOSAL #1			
Audit Notes:				
Version:	Phase:	PROTOTYPE	Tie On Depth:	0.0
Vertical Section:	Depth From (TVD) (usft)	+N/-S (usft)	+E/-W (usft)	Direction (°)
	0.0	0.0	0.0	188.05

Plan Sections											
MD (usft)	Inc (°)	Azi (°)	Vertical Depth	SS (usft)	+N/-S (usft)	+E/-W (usft)	Dogleg Rate (°/100usf)	Build Rate (°/100usf)	Turn Rate (°/100usf)	TFO (°)	Target
0.0	0.00	0.00	0.0	-4,678.0	0.0	0.0	0.00	0.00	0.00	0.00	
500.0	0.00	0.00	500.0	-4,178.0	0.0	0.0	0.00	0.00	0.00	0.00	
920.7	8.41	296.69	919.2	-3,758.8	13.9	-27.5	2.00	2.00	0.00	296.69	
5,156.1	8.41	296.69	5,109.0	431.0	292.2	-581.3	0.00	0.00	0.00	0.00	
5,576.8	0.00	0.00	5,528.2	850.2	306.1	-608.8	2.00	-2.00	0.00	180.00	
5,606.8	0.00	0.00	5,558.2	880.2	306.1	-608.8	0.00	0.00	0.00	0.00	KOP - PRONGHOF
6,288.6	75.00	180.44	6,061.3	1,383.3	-79.9	-611.8	11.00	11.00	0.00	180.44	
6,388.6	75.00	180.44	6,087.2	1,409.2	-176.5	-612.5	0.00	0.00	0.00	0.00	
6,525.0	90.00	180.44	6,105.0	1,427.0	-311.3	-613.5	11.00	11.00	0.00	0.00	
10,785.9	90.00	180.44	6,105.0	1,427.0	-4,572.1	-646.4	0.00	0.00	0.00	116.24	BHL - PRONGHOR

Planning Report



Database:	EDM 5000.1 Single User Db	Local Co-ordinate Reference:	Well PRONGHORN 11-14-22HNB
Company:	BONANZA CREEK ENERGY INC.	TVD Reference:	KB-EST @ 4678.0usft (Original Well Elev)
Project:	WELD COUNTY, COLORADO (NAD 83)	MD Reference:	KB-EST @ 4678.0usft (Original Well Elev)
Site:	NW NW SEC. 22 T5N R61W 6th P.M.	North Reference:	True
Well:	PRONGHORN 11-14-22HNB	Survey Calculation Method:	Minimum Curvature
Wellbore:	ORIGINAL WELLBORE		
Design:	PROPOSAL #1		

Planned Survey										
MD (usft)	Inc (°)	Azi (°)	TVD (usft)	SS (usft)	+N/-S (usft)	+E/-W (usft)	Vertical Section (usft)	Dogleg Rate (°/100usft)	Build Rate (°/100usft)	Turn Rate (°/100usft)
0.0	0.00	0.00	0.0	4,678.00	0.0	0.0	0.0	0.00	0.00	0.00
100.0	0.00	0.00	100.0	4,578.00	0.0	0.0	0.0	0.00	0.00	0.00
200.0	0.00	0.00	200.0	4,478.00	0.0	0.0	0.0	0.00	0.00	0.00
300.0	0.00	0.00	300.0	4,378.00	0.0	0.0	0.0	0.00	0.00	0.00
400.0	0.00	0.00	400.0	4,278.00	0.0	0.0	0.0	0.00	0.00	0.00
START NUDGE (2°/100ft BUR)										
500.0	0.00	0.00	500.0	4,178.00	0.0	0.0	0.0	0.00	0.00	0.00
600.0	2.00	296.69	600.0	4,078.02	0.8	-1.6	-0.6	2.00	2.00	0.00
700.0	4.00	296.69	699.8	3,978.16	3.1	-6.2	-2.2	2.00	2.00	0.00
800.0	6.00	296.69	799.5	3,878.55	7.0	-14.0	-5.0	2.00	2.00	0.00
900.0	8.00	296.69	898.7	3,779.30	12.5	-24.9	-8.9	2.00	2.00	0.00
EOB TO 8.41° INC										
920.7	8.41	296.69	919.2	3,758.81	13.9	-27.5	-9.9	2.00	2.00	0.00
1,000.0	8.41	296.69	997.6	3,680.36	19.1	-37.9	-13.6	0.00	0.00	0.00
1,100.0	8.41	296.69	1,096.6	3,581.44	25.6	-51.0	-18.2	0.00	0.00	0.00
1,200.0	8.41	296.69	1,195.5	3,482.52	32.2	-64.1	-22.9	0.00	0.00	0.00
1,300.0	8.41	296.69	1,294.4	3,383.59	38.8	-77.1	-27.6	0.00	0.00	0.00
1,400.0	8.41	296.69	1,393.3	3,284.67	45.4	-90.2	-32.3	0.00	0.00	0.00
1,500.0	8.41	296.69	1,492.3	3,185.75	51.9	-103.3	-37.0	0.00	0.00	0.00
1,600.0	8.41	296.69	1,591.2	3,086.82	58.5	-116.4	-41.6	0.00	0.00	0.00
1,700.0	8.41	296.69	1,690.1	2,987.90	65.1	-129.4	-46.3	0.00	0.00	0.00
1,800.0	8.41	296.69	1,789.0	2,888.97	71.6	-142.5	-51.0	0.00	0.00	0.00
1,900.0	8.41	296.69	1,887.9	2,790.05	78.2	-155.6	-55.7	0.00	0.00	0.00
2,000.0	8.41	296.69	1,986.9	2,691.13	84.8	-168.6	-60.4	0.00	0.00	0.00
2,100.0	8.41	296.69	2,085.8	2,592.20	91.4	-181.7	-65.0	0.00	0.00	0.00
2,200.0	8.41	296.69	2,184.7	2,493.28	97.9	-194.8	-69.7	0.00	0.00	0.00
2,300.0	8.41	296.69	2,283.6	2,394.36	104.5	-207.9	-74.4	0.00	0.00	0.00
2,400.0	8.41	296.69	2,382.6	2,295.43	111.1	-220.9	-79.1	0.00	0.00	0.00
2,500.0	8.41	296.69	2,481.5	2,196.51	117.7	-234.0	-83.7	0.00	0.00	0.00
2,600.0	8.41	296.69	2,580.4	2,097.59	124.2	-247.1	-88.4	0.00	0.00	0.00
2,700.0	8.41	296.69	2,679.3	1,998.66	130.8	-260.2	-93.1	0.00	0.00	0.00
2,800.0	8.41	296.69	2,778.3	1,899.74	137.4	-273.2	-97.8	0.00	0.00	0.00
2,900.0	8.41	296.69	2,877.2	1,800.81	144.0	-286.3	-102.5	0.00	0.00	0.00
3,000.0	8.41	296.69	2,976.1	1,701.89	150.5	-299.4	-107.1	0.00	0.00	0.00
3,100.0	8.41	296.69	3,075.0	1,602.97	157.1	-312.5	-111.8	0.00	0.00	0.00
3,200.0	8.41	296.69	3,174.0	1,504.04	163.7	-325.5	-116.5	0.00	0.00	0.00
3,300.0	8.41	296.69	3,272.9	1,405.12	170.2	-338.6	-121.2	0.00	0.00	0.00
3,400.0	8.41	296.69	3,371.8	1,306.20	176.8	-351.7	-125.9	0.00	0.00	0.00
3,500.0	8.41	296.69	3,470.7	1,207.27	183.4	-364.7	-130.5	0.00	0.00	0.00
3,600.0	8.41	296.69	3,569.7	1,108.35	190.0	-377.8	-135.2	0.00	0.00	0.00
3,700.0	8.41	296.69	3,668.6	1,009.43	196.5	-390.9	-139.9	0.00	0.00	0.00
3,800.0	8.41	296.69	3,767.5	910.50	203.1	-404.0	-144.6	0.00	0.00	0.00
3,900.0	8.41	296.69	3,866.4	811.58	209.7	-417.0	-149.2	0.00	0.00	0.00
4,000.0	8.41	296.69	3,965.3	712.65	216.3	-430.1	-153.9	0.00	0.00	0.00
4,100.0	8.41	296.69	4,064.3	613.73	222.8	-443.2	-158.6	0.00	0.00	0.00
4,200.0	8.41	296.69	4,163.2	514.81	229.4	-456.3	-163.3	0.00	0.00	0.00
4,300.0	8.41	296.69	4,262.1	415.88	236.0	-469.3	-168.0	0.00	0.00	0.00
4,400.0	8.41	296.69	4,361.0	316.96	242.5	-482.4	-172.6	0.00	0.00	0.00
4,500.0	8.41	296.69	4,460.0	218.04	249.1	-495.5	-177.3	0.00	0.00	0.00
4,600.0	8.41	296.69	4,558.9	119.11	255.7	-508.6	-182.0	0.00	0.00	0.00
4,700.0	8.41	296.69	4,657.8	20.19	262.3	-521.6	-186.7	0.00	0.00	0.00
4,800.0	8.41	296.69	4,756.7	-78.73	268.8	-534.7	-191.3	0.00	0.00	0.00
4,900.0	8.41	296.69	4,855.7	-177.66	275.4	-547.8	-196.0	0.00	0.00	0.00
5,000.0	8.41	296.69	4,954.6	-276.58	282.0	-560.8	-200.7	0.00	0.00	0.00

Planning Report



Database:	EDM 5000.1 Single User Db	Local Co-ordinate Reference:	Well PRONGHORN 11-14-22HNB
Company:	BONANZA CREEK ENERGY INC.	TVD Reference:	KB-EST @ 4678.0usft (Original Well Elev)
Project:	WELD COUNTY, COLORADO (NAD 83)	MD Reference:	KB-EST @ 4678.0usft (Original Well Elev)
Site:	NW NW SEC. 22 T5N R61W 6th P.M.	North Reference:	True
Well:	PRONGHORN 11-14-22HNB	Survey Calculation Method:	Minimum Curvature
Wellbore:	ORIGINAL WELLBORE		
Design:	PROPOSAL #1		

Planned Survey

MD (usft)	Inc (°)	Azi (°)	TVD (usft)	SS (usft)	+N/-S (usft)	+E/-W (usft)	Vertical Section (usft)	Dogleg Rate (°/100usft)	Build Rate (°/100usft)	Turn Rate (°/100usft)
5,100.0	8.41	296.69	5,053.5	-375.51	288.6	-573.9	-205.4	0.00	0.00	0.00
END OF TANGENT										
5,156.1	8.41	296.69	5,109.0	-431.01	292.2	-581.3	-208.0	0.00	0.00	0.00
5,200.0	7.54	296.69	5,152.5	-474.48	295.0	-586.7	-210.0	2.00	-2.00	0.00
5,300.0	5.54	296.69	5,251.8	-573.82	300.1	-596.9	-213.6	2.00	-2.00	0.00
5,400.0	3.54	296.69	5,351.5	-673.50	303.6	-603.9	-216.1	2.00	-2.00	0.00
5,500.0	1.54	296.69	5,451.4	-773.40	305.6	-607.9	-217.5	2.00	-2.00	0.00
EOD TO VERTICAL										
5,576.8	0.00	0.00	5,528.2	-850.20	306.1	-608.8	-217.9	2.00	-2.00	0.00
5,600.0	0.00	0.00	5,551.4	-873.39	306.1	-608.8	-217.9	0.00	0.00	0.00
KOP (11°/100ft BUR)										
5,606.8	0.00	0.00	5,558.2	-880.20	306.1	-608.8	-217.9	0.00	0.00	0.00
5,700.0	10.25	180.44	5,650.9	-972.89	297.8	-608.9	-209.6	11.00	11.00	0.00
5,800.0	21.25	180.44	5,747.0	-1,068.99	270.7	-609.1	-182.8	11.00	11.00	0.00
5,900.0	32.25	180.44	5,836.2	-1,158.15	225.7	-609.4	-138.2	11.00	11.00	0.00
6,000.0	43.25	180.44	5,915.1	-1,237.10	164.6	-609.9	-77.6	11.00	11.00	0.00
6,100.0	54.25	180.44	5,980.9	-1,302.93	89.5	-610.5	-3.2	11.00	11.00	0.00
6,200.0	65.25	180.44	6,031.2	-1,353.23	3.3	-611.1	82.3	11.00	11.00	0.00
START OF TANGENT										
6,288.6	75.00	180.44	6,061.3	-1,383.32	-79.9	-611.8	164.8	11.00	11.00	0.00
6,300.0	75.00	180.44	6,064.3	-1,386.27	-90.9	-611.8	175.7	0.00	0.00	0.00
END OF TANGENT										
6,388.6	75.00	180.44	6,087.2	-1,409.20	-176.5	-612.5	260.5	0.00	0.00	0.00
6,400.0	76.25	180.44	6,090.0	-1,412.03	-187.6	-612.6	271.5	11.00	11.00	0.00
6,500.0	87.25	180.44	6,104.4	-1,426.35	-286.4	-613.3	369.4	11.00	11.00	0.00
ICP*NEW* - PRONGHORN 11-14-22HNB										
6,525.0	90.00	180.44	6,105.0	-1,426.95	-311.3	-613.5	394.2	11.00	11.00	0.00
6,600.0	90.00	180.44	6,105.0	-1,426.95	-386.4	-614.1	468.5	0.00	0.00	0.00
6,700.0	90.00	180.44	6,105.0	-1,426.95	-486.3	-614.9	567.6	0.00	0.00	0.00
6,800.0	90.00	180.44	6,105.0	-1,426.95	-586.3	-615.7	666.8	0.00	0.00	0.00
6,900.0	90.00	180.44	6,105.0	-1,426.95	-686.3	-616.4	765.9	0.00	0.00	0.00
7,000.0	90.00	180.44	6,105.0	-1,426.95	-786.3	-617.2	865.0	0.00	0.00	0.00
7,100.0	90.00	180.44	6,105.0	-1,426.95	-886.3	-618.0	964.1	0.00	0.00	0.00
7,200.0	90.00	180.44	6,105.0	-1,426.95	-986.3	-618.7	1,063.2	0.00	0.00	0.00
7,300.0	90.00	180.44	6,105.0	-1,426.95	-1,086.3	-619.5	1,162.4	0.00	0.00	0.00
7,400.0	90.00	180.44	6,105.0	-1,426.95	-1,186.3	-620.3	1,261.5	0.00	0.00	0.00
7,500.0	90.00	180.44	6,105.0	-1,426.96	-1,286.3	-621.0	1,360.6	0.00	0.00	0.00
7,600.0	90.00	180.44	6,105.0	-1,426.96	-1,386.3	-621.8	1,459.7	0.00	0.00	0.00
7,700.0	90.00	180.44	6,105.0	-1,426.96	-1,486.3	-622.6	1,558.8	0.00	0.00	0.00
7,800.0	90.00	180.44	6,105.0	-1,426.96	-1,586.3	-623.3	1,658.0	0.00	0.00	0.00
7,900.0	90.00	180.44	6,105.0	-1,426.96	-1,686.3	-624.1	1,757.1	0.00	0.00	0.00
8,000.0	90.00	180.44	6,105.0	-1,426.96	-1,786.3	-624.9	1,856.2	0.00	0.00	0.00
8,100.0	90.00	180.44	6,105.0	-1,426.96	-1,886.3	-625.6	1,955.3	0.00	0.00	0.00
8,200.0	90.00	180.44	6,105.0	-1,426.96	-1,986.3	-626.4	2,054.4	0.00	0.00	0.00
8,300.0	90.00	180.44	6,105.0	-1,426.96	-2,086.3	-627.2	2,153.6	0.00	0.00	0.00
8,400.0	90.00	180.44	6,105.0	-1,426.96	-2,186.3	-628.0	2,252.7	0.00	0.00	0.00
8,500.0	90.00	180.44	6,105.0	-1,426.96	-2,286.3	-628.7	2,351.8	0.00	0.00	0.00
8,600.0	90.00	180.44	6,105.0	-1,426.96	-2,386.3	-629.5	2,450.9	0.00	0.00	0.00
8,700.0	90.00	180.44	6,105.0	-1,426.96	-2,486.3	-630.3	2,550.0	0.00	0.00	0.00
8,800.0	90.00	180.44	6,105.0	-1,426.97	-2,586.3	-631.0	2,649.2	0.00	0.00	0.00
8,900.0	90.00	180.44	6,105.0	-1,426.97	-2,686.3	-631.8	2,748.3	0.00	0.00	0.00
9,000.0	90.00	180.44	6,105.0	-1,426.97	-2,786.3	-632.6	2,847.4	0.00	0.00	0.00
9,100.0	90.00	180.44	6,105.0	-1,426.97	-2,886.3	-633.4	2,946.5	0.00	0.00	0.00

Planning Report



Database:	EDM 5000.1 Single User Db	Local Co-ordinate Reference:	Well PRONGHORN 11-14-22HNB
Company:	BONANZA CREEK ENERGY INC.	TVD Reference:	KB-EST @ 4678.0usft (Original Well Elev)
Project:	WELD COUNTY, COLORADO (NAD 83)	MD Reference:	KB-EST @ 4678.0usft (Original Well Elev)
Site:	NW NW SEC. 22 T5N R61W 6th P.M.	North Reference:	True
Well:	PRONGHORN 11-14-22HNB	Survey Calculation Method:	Minimum Curvature
Wellbore:	ORIGINAL WELLBORE		
Design:	PROPOSAL #1		

Planned Survey

MD (usft)	Inc (°)	Azi (°)	TVD (usft)	SS (usft)	+N/-S (usft)	+E/-W (usft)	Vertical Section (usft)	Dogleg Rate (°/100usft)	Build Rate (°/100usft)	Turn Rate (°/100usft)
9,200.0	90.00	180.44	6,105.0	-1,426.97	-2,986.3	-634.1	3,045.6	0.00	0.00	0.00
9,300.0	90.00	180.44	6,105.0	-1,426.97	-3,086.3	-634.9	3,144.8	0.00	0.00	0.00
9,400.0	90.00	180.44	6,105.0	-1,426.97	-3,186.3	-635.7	3,243.9	0.00	0.00	0.00
9,500.0	90.00	180.44	6,105.0	-1,426.98	-3,286.3	-636.4	3,343.0	0.00	0.00	0.00
9,600.0	90.00	180.44	6,105.0	-1,426.98	-3,386.3	-637.2	3,442.1	0.00	0.00	0.00
9,700.0	90.00	180.44	6,105.0	-1,426.98	-3,486.3	-638.0	3,541.2	0.00	0.00	0.00
9,800.0	90.00	180.44	6,105.0	-1,426.98	-3,586.3	-638.7	3,640.4	0.00	0.00	0.00
9,900.0	90.00	180.44	6,105.0	-1,426.98	-3,686.3	-639.5	3,739.5	0.00	0.00	0.00
10,000.0	90.00	180.44	6,105.0	-1,426.98	-3,786.3	-640.3	3,838.6	0.00	0.00	0.00
10,100.0	90.00	180.44	6,105.0	-1,426.99	-3,886.2	-641.1	3,937.7	0.00	0.00	0.00
10,200.0	90.00	180.44	6,105.0	-1,426.99	-3,986.2	-641.8	4,036.8	0.00	0.00	0.00
10,300.0	90.00	180.44	6,105.0	-1,426.99	-4,086.2	-642.6	4,136.0	0.00	0.00	0.00
10,400.0	90.00	180.44	6,105.0	-1,426.99	-4,186.2	-643.4	4,235.1	0.00	0.00	0.00
10,500.0	90.00	180.44	6,105.0	-1,426.99	-4,286.2	-644.2	4,334.2	0.00	0.00	0.00
10,600.0	90.00	180.44	6,105.0	-1,427.00	-4,386.2	-644.9	4,433.3	0.00	0.00	0.00
10,700.0	90.00	180.44	6,105.0	-1,427.00	-4,486.2	-645.7	4,532.4	0.00	0.00	0.00
BHL - PRONGHORN 11-14-22HNB										
10,785.9	90.00	180.44	6,105.0	-1,427.00	-4,572.1	-646.4	4,617.5	0.00	0.00	0.00

Plan Annotations

MD (usft)	TVD (usft)	Local Coordinates		Comment
		+N/-S (usft)	+E/-W (usft)	
500.0	500.0	0.0	0.0	START NUDGE (2°/100ft BUR)
920.7	919.2	13.9	-27.5	EOB TO 8.41° INC
5,156.1	5,109.0	292.2	-581.3	END OF TANGENT
5,576.8	5,528.2	306.1	-608.8	EOD TO VERTICAL
5,606.8	5,558.2	306.1	-608.8	KOP (11°/100ft BUR)
6,288.6	6,061.3	-79.9	-611.8	START OF TANGENT
6,388.6	6,087.2	-176.5	-612.5	END OF TANGENT
6,525.0	6,105.0	-311.3	-613.5	ICP*NEW* - PRONGHORN 11-14-22HNB
10,785.9	6,105.0	-4,572.1	-646.4	BHL - PRONGHORN 11-14-22HNB