

BONANZA CREEK ENERGY INC.

WELD COUNTY, COLORADO (NAD 83)

NW NW SEC. 22 T5N R61W 6th P.M.

PRONGHORN F-J-22HNB

ORIGINAL WELLBORE

25 March, 2014

Plan: PROPOSAL #1





Project: WELD COUNTY, COLORADO (NAD 83)
Site: NW NW SEC. 22 T5N R61W 6th P.M.
Well: PRONGHORN F-J-22HNB
Wellbore: ORIGINAL WELLBORE
Design: PROPOSAL #1

ANNOTATIONS

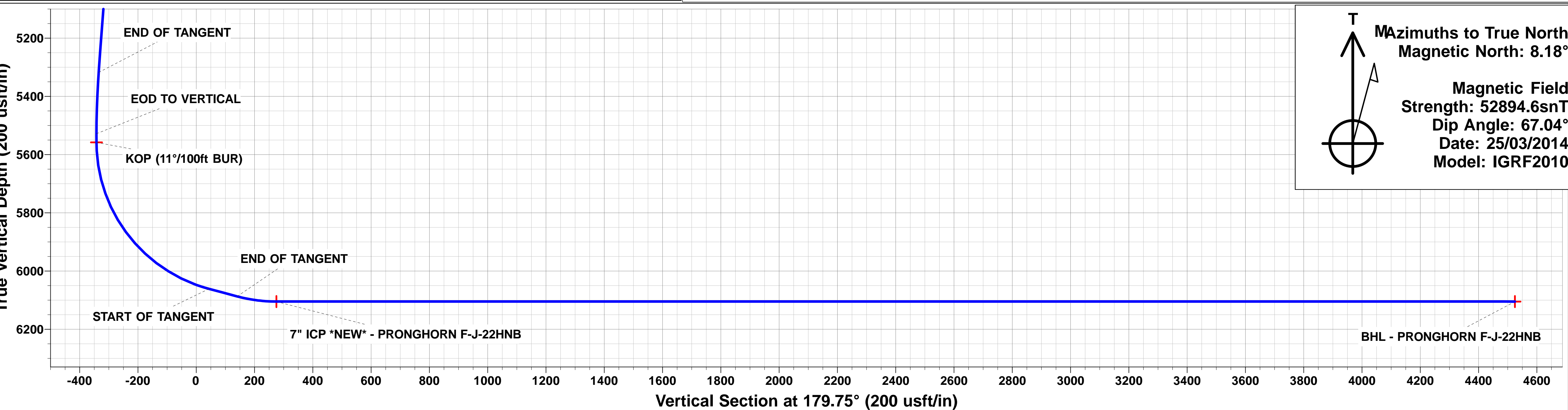
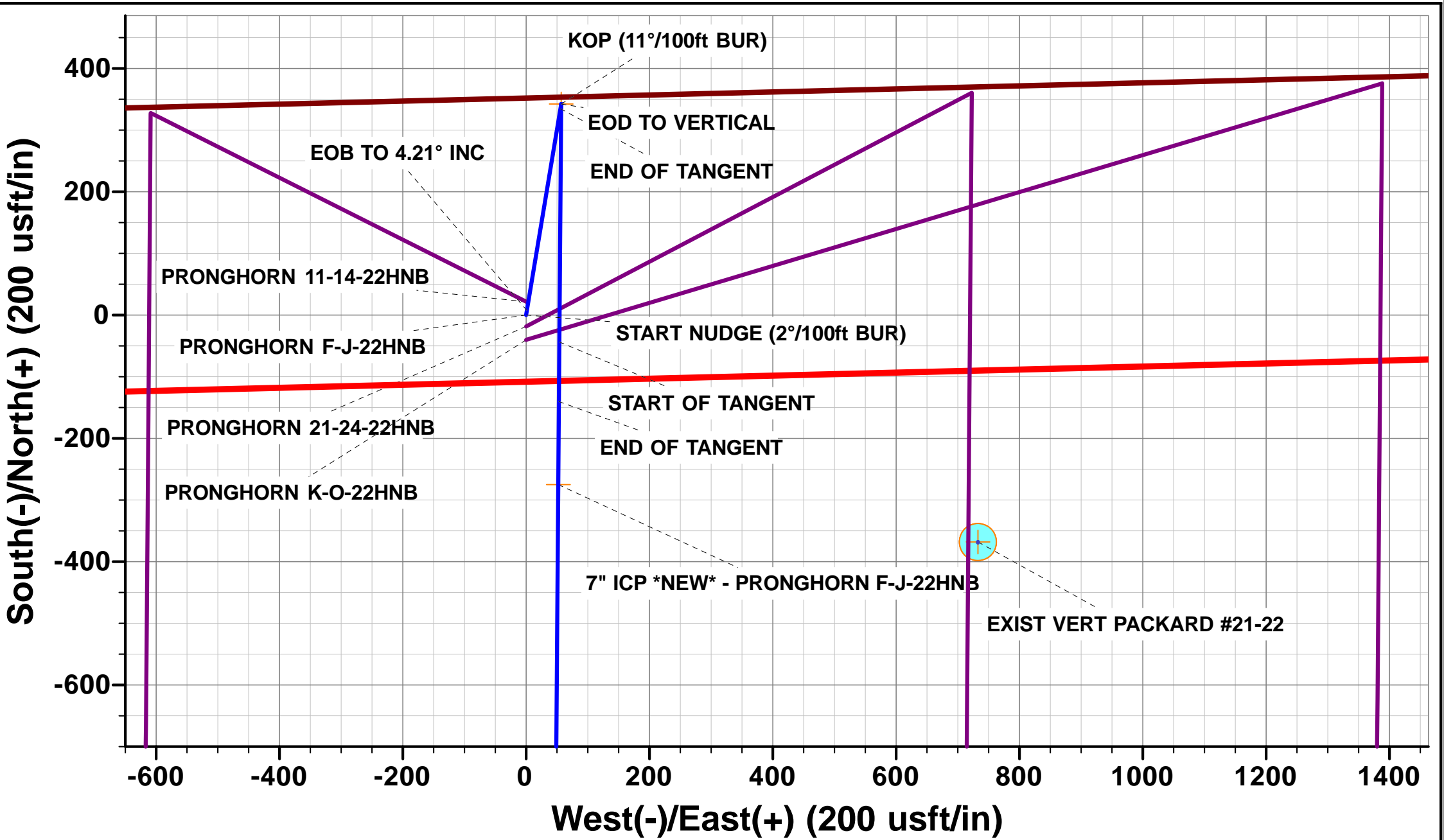
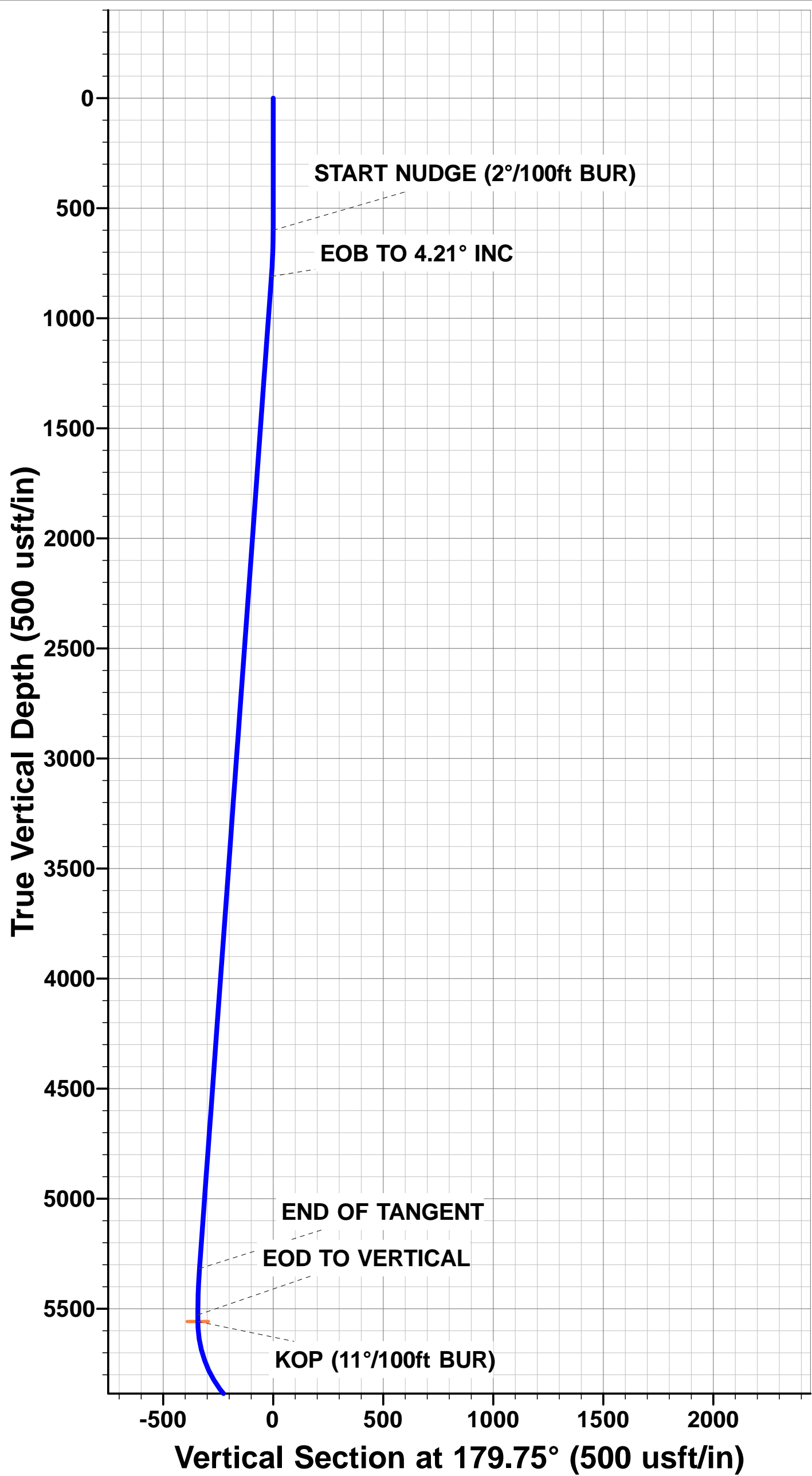
TVD	MD	Inc	Azi	+N/-S	+E/-W	VSect	Dep	Annotation
600.0	600.0	0.00	0.00	0.0	0.0	0.0	0.0	START NUDGE (2°/100ft BUR)
810.3	810.5	4.21	9.43	7.6	1.3	-7.6	7.7	EOB TO 4.21° INC
5317.9	5330.3	4.21	9.43	334.9	55.6	-334.6	339.5	END OF TANGENT
5528.2	5540.8	0.00	0.00	342.5	56.9	-342.3	347.2	EOD TO VERTICAL
5558.2	5570.8	0.00	0.00	342.5	56.9	-342.3	347.2	KOP (11°/100ft BUR)
6061.3	6252.6	75.00	180.44	-43.5	53.9	43.8	733.3	START OF TANGENT
6087.2	6352.6	75.00	180.44	-140.1	53.2	140.4	829.8	END OF TANGENT
6105.0	6489.0	90.00	180.44	-274.9	52.2	275.2	964.7	ICP *NEW* - PRONGHORN F-J-22HNB
6105.0	10738.9	90.00	180.44	-4524.7	19.5	4524.8	5214.6	BHL - PRONGHORN F-J-22HNB

LOCAL COORDINATES:

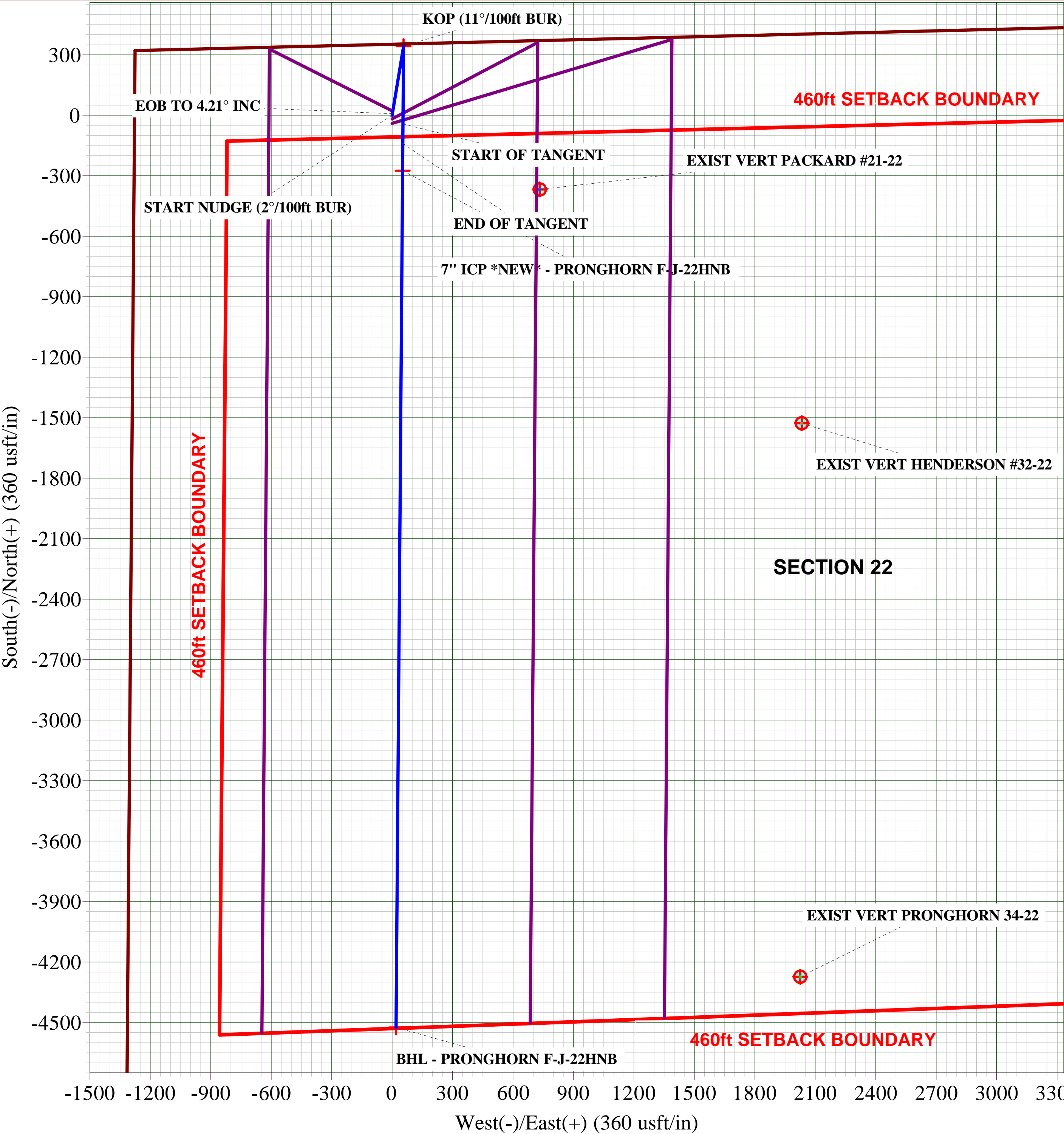
SHL: 352ft FNL & 1279ft FWL Sec 22
7" ICP *NEW*: ft 627.4ft FNL & 1333ft FWL Sec 22
BHL: 470ft FSL & 1333ft FWL Sec 22

WELLBORE TARGET DETAILS (LAT/LONG)

Name	TVD	+N/-S	+E/-W	Latitude	Longitude
KOP - PRONGHORN F-J-22HNB	5558.2	342.5	56.9	40.393640	-104.199646
BHL - PRONGHORN F-J-22HNB	6105.0	-4524.7	19.5	40.380280	-104.199780
7" ICP *NEW* - PRONGHORN F-J-22HNB	6105.0	-274.9	52.2	40.391945	-104.199663



Mazimuths to True North
Magnetic North: 8.18°
Magnetic Field
Strength: 52894.6snT
Dip Angle: 67.04°
Date: 25/03/2014
Model: IGRF2010



Planning Report



Database:	EDM 5000.1 Single User Db	Local Co-ordinate Reference:	Well PRONGHORN F-J-22HNB
Company:	BONANZA CREEK ENERGY INC.	TVD Reference:	KB-EST @ 4678.0usft (Original Well Elev)
Project:	WELD COUNTY, COLORADO (NAD 83)	MD Reference:	KB-EST @ 4678.0usft (Original Well Elev)
Site:	NW NW SEC. 22 T5N R61W 6th P.M.	North Reference:	True
Well:	PRONGHORN F-J-22HNB	Survey Calculation Method:	Minimum Curvature
Wellbore:	ORIGINAL WELLBORE		
Design:	PROPOSAL #1		

Project	WELD COUNTY, COLORADO (NAD 83)		
Map System:	US State Plane 1983	System Datum:	Mean Sea Level
Geo Datum:	North American Datum 1983		
Map Zone:	Colorado Northern Zone		Using geodetic scale factor

Site		NW NW SEC. 22 T5N R61W 6th P.M.			
Site Position:		Northing:	1,388,515.79 usft	Latitude:	40.392590
From:	Lat/Long	Easting:	3,362,131.84 usft	Longitude:	-104.199850
Position Uncertainty:	0.0 usft	Slot Radius:	1.10000 ft	Grid Convergence:	0.84 °

Well	PRONGHORN F-J-22HNB					
Well Position	+N/-S	40.1 usft	Northing:	1,388,555.85 usft	Latitude:	40.392700
	+E/-W	0.0 usft	Easting:	3,362,131.26 usft	Longitude:	-104.199850
Position Uncertainty		0.0 usft	Wellhead Elevation:	usft	Ground Level:	4,661.0 usft

Wellbore	ORIGINAL WELLBORE				
Magnetics	Model Name	Sample Date	Declination (°)	Dip Angle (°)	Field Strength (nT)
	IGRF2010	25/03/2014	8.18	67.04	52,895

Design	PROPOSAL #1			
Audit Notes:				
Version:	Phase:	PROTOTYPE	Tie On Depth:	0.0
Vertical Section:	Depth From (TVD) (usft)	+N/-S (usft)	+E/-W (usft)	Direction (°)
	0.0	0.0	0.0	179.75

Plan Sections											
MD (usft)	Inc (°)	Azi (°)	Vertical Depth	SS (usft)	+N/-S (usft)	+E/-W (usft)	Dogleg Rate (°/100usf)	Build Rate (°/100usf)	Turn Rate (°/100usf)	TFO (°)	Target
0.0	0.00	0.00	0.0	-4,678.0	0.0	0.0	0.00	0.00	0.00	0.00	
600.0	0.00	0.00	600.0	-4,078.0	0.0	0.0	0.00	0.00	0.00	0.00	
810.5	4.21	9.43	810.3	-3,867.7	7.6	1.3	2.00	2.00	0.00	9.43	
5,330.3	4.21	9.43	5,317.9	639.9	334.9	55.6	0.00	0.00	0.00	0.00	
5,540.8	0.00	0.00	5,528.2	850.2	342.5	56.9	2.00	-2.00	0.00	180.00	
5,570.8	0.00	0.00	5,558.2	880.2	342.5	56.9	0.00	0.00	0.00	0.00	KOP - PRONGHOF
6,252.6	75.00	180.44	6,061.3	1,383.3	-43.5	53.9	11.00	11.00	0.00	180.44	
6,352.6	75.00	180.44	6,087.2	1,409.2	-140.1	53.2	0.00	0.00	0.00	0.00	
6,489.0	90.00	180.44	6,105.0	1,427.0	-274.9	52.2	11.00	11.00	0.00	0.00	
10,738.9	90.00	180.44	6,105.0	1,427.0	-4,524.7	19.5	0.00	0.00	0.00	0.00	BHL - PRONGHOR

Planning Report



Database:	EDM 5000.1 Single User Db	Local Co-ordinate Reference:	Well PRONGHORN F-J-22HNB
Company:	BONANZA CREEK ENERGY INC.	TVD Reference:	KB-EST @ 4678.0usft (Original Well Elev)
Project:	WELD COUNTY, COLORADO (NAD 83)	MD Reference:	KB-EST @ 4678.0usft (Original Well Elev)
Site:	NW NW SEC. 22 T5N R61W 6th P.M.	North Reference:	True
Well:	PRONGHORN F-J-22HNB	Survey Calculation Method:	Minimum Curvature
Wellbore:	ORIGINAL WELLBORE		
Design:	PROPOSAL #1		

Planned Survey										
MD (usft)	Inc (°)	Azi (°)	TVD (usft)	SS (usft)	+N/-S (usft)	+E/-W (usft)	Vertical Section (usft)	Dogleg Rate (°/100usft)	Build Rate (°/100usft)	Turn Rate (°/100usft)
0.0	0.00	0.00	0.0	4,678.00	0.0	0.0	0.0	0.00	0.00	0.00
100.0	0.00	0.00	100.0	4,578.00	0.0	0.0	0.0	0.00	0.00	0.00
200.0	0.00	0.00	200.0	4,478.00	0.0	0.0	0.0	0.00	0.00	0.00
300.0	0.00	0.00	300.0	4,378.00	0.0	0.0	0.0	0.00	0.00	0.00
400.0	0.00	0.00	400.0	4,278.00	0.0	0.0	0.0	0.00	0.00	0.00
500.0	0.00	0.00	500.0	4,178.00	0.0	0.0	0.0	0.00	0.00	0.00
START NUDGE (2°/100ft BUR)										
600.0	0.00	0.00	600.0	4,078.00	0.0	0.0	0.0	0.00	0.00	0.00
700.0	2.00	9.43	700.0	3,978.02	1.7	0.3	-1.7	2.00	2.00	0.00
800.0	4.00	9.43	799.8	3,878.16	6.9	1.1	-6.9	2.00	2.00	0.00
EOB TO 4.21° INC										
810.5	4.21	9.43	810.3	3,867.74	7.6	1.3	-7.6	2.00	2.00	0.00
900.0	4.21	9.43	899.6	3,778.43	14.1	2.3	-14.1	0.00	0.00	0.00
1,000.0	4.21	9.43	999.3	3,678.70	21.3	3.5	-21.3	0.00	0.00	0.00
1,100.0	4.21	9.43	1,099.0	3,578.97	28.6	4.7	-28.6	0.00	0.00	0.00
1,200.0	4.21	9.43	1,198.8	3,479.24	35.8	6.0	-35.8	0.00	0.00	0.00
1,300.0	4.21	9.43	1,298.5	3,379.51	43.1	7.2	-43.0	0.00	0.00	0.00
1,400.0	4.21	9.43	1,398.2	3,279.78	50.3	8.4	-50.3	0.00	0.00	0.00
1,500.0	4.21	9.43	1,498.0	3,180.05	57.5	9.6	-57.5	0.00	0.00	0.00
1,600.0	4.21	9.43	1,597.7	3,080.32	64.8	10.8	-64.7	0.00	0.00	0.00
1,700.0	4.21	9.43	1,697.4	2,980.59	72.0	12.0	-72.0	0.00	0.00	0.00
1,800.0	4.21	9.43	1,797.1	2,880.86	79.3	13.2	-79.2	0.00	0.00	0.00
1,900.0	4.21	9.43	1,896.9	2,781.13	86.5	14.4	-86.4	0.00	0.00	0.00
2,000.0	4.21	9.43	1,996.6	2,681.40	93.8	15.6	-93.7	0.00	0.00	0.00
2,100.0	4.21	9.43	2,096.3	2,581.67	101.0	16.8	-100.9	0.00	0.00	0.00
2,200.0	4.21	9.43	2,196.1	2,481.94	108.2	18.0	-108.2	0.00	0.00	0.00
2,300.0	4.21	9.43	2,295.8	2,382.21	115.5	19.2	-115.4	0.00	0.00	0.00
2,400.0	4.21	9.43	2,395.5	2,282.48	122.7	20.4	-122.6	0.00	0.00	0.00
2,500.0	4.21	9.43	2,495.3	2,182.75	130.0	21.6	-129.9	0.00	0.00	0.00
2,600.0	4.21	9.43	2,595.0	2,083.02	137.2	22.8	-137.1	0.00	0.00	0.00
2,700.0	4.21	9.43	2,694.7	1,983.29	144.4	24.0	-144.3	0.00	0.00	0.00
2,800.0	4.21	9.43	2,794.4	1,883.56	151.7	25.2	-151.6	0.00	0.00	0.00
2,900.0	4.21	9.43	2,894.2	1,783.83	158.9	26.4	-158.8	0.00	0.00	0.00
3,000.0	4.21	9.43	2,993.9	1,684.09	166.2	27.6	-166.0	0.00	0.00	0.00
3,100.0	4.21	9.43	3,093.6	1,584.36	173.4	28.8	-173.3	0.00	0.00	0.00
3,200.0	4.21	9.43	3,193.4	1,484.63	180.6	30.0	-180.5	0.00	0.00	0.00
3,300.0	4.21	9.43	3,293.1	1,384.90	187.9	31.2	-187.7	0.00	0.00	0.00
3,400.0	4.21	9.43	3,392.8	1,285.17	195.1	32.4	-195.0	0.00	0.00	0.00
3,500.0	4.21	9.43	3,492.6	1,185.44	202.4	33.6	-202.2	0.00	0.00	0.00
3,600.0	4.21	9.43	3,592.3	1,085.71	209.6	34.8	-209.4	0.00	0.00	0.00
3,700.0	4.21	9.43	3,692.0	985.98	216.8	36.0	-216.7	0.00	0.00	0.00
3,800.0	4.21	9.43	3,791.7	886.25	224.1	37.2	-223.9	0.00	0.00	0.00
3,900.0	4.21	9.43	3,891.5	786.52	231.3	38.4	-231.1	0.00	0.00	0.00
4,000.0	4.21	9.43	3,991.2	686.79	238.6	39.6	-238.4	0.00	0.00	0.00
4,100.0	4.21	9.43	4,090.9	587.06	245.8	40.8	-245.6	0.00	0.00	0.00
4,200.0	4.21	9.43	4,190.7	487.33	253.0	42.0	-252.9	0.00	0.00	0.00
4,300.0	4.21	9.43	4,290.4	387.60	260.3	43.2	-260.1	0.00	0.00	0.00
4,400.0	4.21	9.43	4,390.1	287.87	267.5	44.4	-267.3	0.00	0.00	0.00
4,500.0	4.21	9.43	4,489.9	188.14	274.8	45.6	-274.6	0.00	0.00	0.00
4,600.0	4.21	9.43	4,589.6	88.41	282.0	46.8	-281.8	0.00	0.00	0.00
4,700.0	4.21	9.43	4,689.3	-11.32	289.2	48.1	-289.0	0.00	0.00	0.00
4,800.0	4.21	9.43	4,789.1	-111.05	296.5	49.3	-296.3	0.00	0.00	0.00
4,900.0	4.21	9.43	4,888.8	-210.78	303.7	50.5	-303.5	0.00	0.00	0.00
5,000.0	4.21	9.43	4,988.5	-310.51	311.0	51.7	-310.7	0.00	0.00	0.00

Planning Report



Database:	EDM 5000.1 Single User Db	Local Co-ordinate Reference:	Well PRONGHORN F-J-22HNB
Company:	BONANZA CREEK ENERGY INC.	TVD Reference:	KB-EST @ 4678.0usft (Original Well Elev)
Project:	WELD COUNTY, COLORADO (NAD 83)	MD Reference:	KB-EST @ 4678.0usft (Original Well Elev)
Site:	NW NW SEC. 22 T5N R61W 6th P.M.	North Reference:	True
Well:	PRONGHORN F-J-22HNB	Survey Calculation Method:	Minimum Curvature
Wellbore:	ORIGINAL WELLBORE		
Design:	PROPOSAL #1		

Planned Survey

MD (usft)	Inc (°)	Azi (°)	TVD (usft)	SS (usft)	+N/-S (usft)	+E/-W (usft)	Vertical Section (usft)	Dogleg Rate (°/100usft)	Build Rate (°/100usft)	Turn Rate (°/100usft)
5,100.0	4.21	9.43	5,088.2	-410.24	318.2	52.9	-318.0	0.00	0.00	0.00
5,200.0	4.21	9.43	5,188.0	-509.97	325.4	54.1	-325.2	0.00	0.00	0.00
5,300.0	4.21	9.43	5,287.7	-609.70	332.7	55.3	-332.4	0.00	0.00	0.00
END OF TANGENT										
5,330.3	4.21	9.43	5,317.9	-639.94	334.9	55.6	-334.6	0.00	0.00	0.00
5,400.0	2.82	9.43	5,387.5	-709.49	339.1	56.3	-338.8	2.00	-2.00	0.00
5,500.0	0.82	9.43	5,487.4	-809.43	342.2	56.9	-342.0	2.00	-2.00	0.00
EOD TO VERTICAL										
5,540.8	0.00	0.00	5,528.2	-850.20	342.5	56.9	-342.3	2.00	-2.00	0.00
KOP (11°/100ft BUR)										
5,570.8	0.00	0.00	5,558.2	-880.20	342.5	56.9	-342.3	0.00	0.00	0.00
5,600.0	3.22	180.44	5,587.4	-909.42	341.7	56.9	-341.4	11.00	11.00	0.00
5,700.0	14.22	180.44	5,686.1	-1,008.11	326.6	56.8	-326.3	11.00	11.00	0.00
5,800.0	25.22	180.44	5,780.1	-1,102.10	292.9	56.5	-292.6	11.00	11.00	0.00
5,900.0	36.22	180.44	5,865.9	-1,187.94	241.9	56.1	-241.6	11.00	11.00	0.00
6,000.0	47.22	180.44	5,940.5	-1,262.47	175.4	55.6	-175.2	11.00	11.00	0.00
6,100.0	58.22	180.44	6,001.0	-1,322.96	96.0	55.0	-95.8	11.00	11.00	0.00
6,200.0	69.22	180.44	6,045.2	-1,367.17	6.5	54.3	-6.2	11.00	11.00	0.00
START OF TANGENT										
6,252.6	75.00	180.44	6,061.3	-1,383.32	-43.5	53.9	43.8	11.00	11.00	0.00
6,300.0	75.00	180.44	6,073.6	-1,395.59	-89.3	53.6	89.6	0.00	0.00	0.00
END OF TANGENT										
6,352.6	75.00	180.44	6,087.2	-1,409.20	-140.1	53.2	140.4	0.00	0.00	0.00
6,400.0	80.22	180.44	6,097.4	-1,419.38	-186.4	52.8	186.7	11.00	11.00	0.00
ICP *NEW* - PRONGHORN F-J-22HNB										
6,489.0	90.00	180.44	6,105.0	-1,426.95	-274.9	52.2	275.2	11.00	11.00	0.00
6,500.0	90.00	180.44	6,105.0	-1,426.95	-286.0	52.1	286.2	0.00	0.00	0.00
6,600.0	90.00	180.44	6,105.0	-1,426.95	-386.0	51.3	386.2	0.00	0.00	0.00
6,700.0	90.00	180.44	6,105.0	-1,426.95	-486.0	50.5	486.2	0.00	0.00	0.00
6,800.0	90.00	180.44	6,105.0	-1,426.95	-586.0	49.8	586.2	0.00	0.00	0.00
6,900.0	90.00	180.44	6,105.0	-1,426.95	-686.0	49.0	686.2	0.00	0.00	0.00
7,000.0	90.00	180.44	6,105.0	-1,426.95	-786.0	48.2	786.2	0.00	0.00	0.00
7,100.0	90.00	180.44	6,105.0	-1,426.95	-886.0	47.5	886.2	0.00	0.00	0.00
7,200.0	90.00	180.44	6,105.0	-1,426.95	-986.0	46.7	986.2	0.00	0.00	0.00
7,300.0	90.00	180.44	6,105.0	-1,426.95	-1,086.0	45.9	1,086.2	0.00	0.00	0.00
7,400.0	90.00	180.44	6,105.0	-1,426.95	-1,186.0	45.2	1,186.2	0.00	0.00	0.00
7,500.0	90.00	180.44	6,105.0	-1,426.95	-1,286.0	44.4	1,286.1	0.00	0.00	0.00
7,600.0	90.00	180.44	6,105.0	-1,426.95	-1,386.0	43.6	1,386.1	0.00	0.00	0.00
7,700.0	90.00	180.44	6,105.0	-1,426.95	-1,486.0	42.9	1,486.1	0.00	0.00	0.00
7,800.0	90.00	180.44	6,105.0	-1,426.95	-1,586.0	42.1	1,586.1	0.00	0.00	0.00
7,900.0	90.00	180.44	6,105.0	-1,426.95	-1,686.0	41.3	1,686.1	0.00	0.00	0.00
8,000.0	90.00	180.44	6,105.0	-1,426.95	-1,785.9	40.6	1,786.1	0.00	0.00	0.00
8,100.0	90.00	180.44	6,105.0	-1,426.95	-1,885.9	39.8	1,886.1	0.00	0.00	0.00
8,200.0	90.00	180.44	6,105.0	-1,426.95	-1,985.9	39.0	1,986.1	0.00	0.00	0.00
8,300.0	90.00	180.44	6,105.0	-1,426.95	-2,085.9	38.3	2,086.1	0.00	0.00	0.00
8,400.0	90.00	180.44	6,105.0	-1,426.95	-2,185.9	37.5	2,186.1	0.00	0.00	0.00
8,500.0	90.00	180.44	6,105.0	-1,426.95	-2,285.9	36.7	2,286.1	0.00	0.00	0.00
8,600.0	90.00	180.44	6,105.0	-1,426.95	-2,385.9	35.9	2,386.1	0.00	0.00	0.00
8,700.0	90.00	180.44	6,105.0	-1,426.95	-2,485.9	35.2	2,486.1	0.00	0.00	0.00
8,800.0	90.00	180.44	6,105.0	-1,426.95	-2,585.9	34.4	2,586.1	0.00	0.00	0.00
8,900.0	90.00	180.44	6,105.0	-1,426.95	-2,685.9	33.6	2,686.0	0.00	0.00	0.00
9,000.0	90.00	180.44	6,105.0	-1,426.95	-2,785.9	32.9	2,786.0	0.00	0.00	0.00
9,100.0	90.00	180.44	6,105.0	-1,426.95	-2,885.9	32.1	2,886.0	0.00	0.00	0.00

Planning Report



Database:	EDM 5000.1 Single User Db	Local Co-ordinate Reference:	Well PRONGHORN F-J-22HNB
Company:	BONANZA CREEK ENERGY INC.	TVD Reference:	KB-EST @ 4678.0usft (Original Well Elev)
Project:	WELD COUNTY, COLORADO (NAD 83)	MD Reference:	KB-EST @ 4678.0usft (Original Well Elev)
Site:	NW NW SEC. 22 T5N R61W 6th P.M.	North Reference:	True
Well:	PRONGHORN F-J-22HNB	Survey Calculation Method:	Minimum Curvature
Wellbore:	ORIGINAL WELLBORE		
Design:	PROPOSAL #1		

Planned Survey										
MD (usft)	Inc (°)	Azi (°)	TVD (usft)	SS (usft)	+N/-S (usft)	+E/-W (usft)	Vertical Section (usft)	Dogleg Rate (°/100usft)	Build Rate (°/100usft)	Turn Rate (°/100usft)
9,200.0	90.00	180.44	6,105.0	-1,426.95	-2,985.9	31.3	2,986.0	0.00	0.00	0.00
9,300.0	90.00	180.44	6,105.0	-1,426.95	-3,085.9	30.6	3,086.0	0.00	0.00	0.00
9,400.0	90.00	180.44	6,105.0	-1,426.95	-3,185.9	29.8	3,186.0	0.00	0.00	0.00
9,500.0	90.00	180.44	6,105.0	-1,426.95	-3,285.9	29.0	3,286.0	0.00	0.00	0.00
9,600.0	90.00	180.44	6,105.0	-1,426.95	-3,385.9	28.3	3,386.0	0.00	0.00	0.00
9,700.0	90.00	180.44	6,105.0	-1,426.95	-3,485.9	27.5	3,486.0	0.00	0.00	0.00
9,800.0	90.00	180.44	6,105.0	-1,426.95	-3,585.9	26.7	3,586.0	0.00	0.00	0.00
9,900.0	90.00	180.44	6,105.0	-1,426.95	-3,685.9	26.0	3,686.0	0.00	0.00	0.00
10,000.0	90.00	180.44	6,105.0	-1,426.95	-3,785.9	25.2	3,786.0	0.00	0.00	0.00
10,100.0	90.00	180.44	6,105.0	-1,426.95	-3,885.9	24.4	3,886.0	0.00	0.00	0.00
10,200.0	90.00	180.44	6,105.0	-1,426.95	-3,985.9	23.7	3,985.9	0.00	0.00	0.00
10,300.0	90.00	180.44	6,105.0	-1,426.95	-4,085.9	22.9	4,085.9	0.00	0.00	0.00
10,400.0	90.00	180.44	6,105.0	-1,426.95	-4,185.9	22.1	4,185.9	0.00	0.00	0.00
10,500.0	90.00	180.44	6,105.0	-1,426.95	-4,285.9	21.4	4,285.9	0.00	0.00	0.00
10,600.0	90.00	180.44	6,105.0	-1,426.95	-4,385.9	20.6	4,385.9	0.00	0.00	0.00
10,700.0	90.00	180.44	6,105.0	-1,426.95	-4,485.9	19.8	4,485.9	0.00	0.00	0.00
BHL - PRONGHORN F-J-22HNB										
10,738.9	90.00	180.44	6,105.0	-1,427.00	-4,524.7	19.5	4,524.8	0.00	0.00	0.00

Plan Annotations					
MD (usft)	TVD (usft)	Local Coordinates		Comment	
		+N/-S (usft)	+E/-W (usft)		
600.0	600.0	0.0	0.0	START NUDGE (2°/100ft BUR)	
810.5	810.3	7.6	1.3	EOB TO 4.21° INC	
5,330.3	5,317.9	334.9	55.6	END OF TANGENT	
5,540.8	5,528.2	342.5	56.9	EOD TO VERTICAL	
5,570.8	5,558.2	342.5	56.9	KOP (11°/100ft BUR)	
6,252.6	6,061.3	-43.5	53.9	START OF TANGENT	
6,352.6	6,087.2	-140.1	53.2	END OF TANGENT	
6,489.0	6,105.0	-274.9	52.2	ICP *NEW* - PRONGHORN F-J-22HNB	
10,738.9	6,105.0	-4,524.7	19.5	BHL - PRONGHORN F-J-22HNB	