

BONANZA CREEK ENERGY INC.

WELD COUNTY, COLORADO (NAD 83)

NW NW SEC. 22 T5N R61W 6th P.M.

PRONGHORN K-O-22HNB

ORIGINAL WELLBORE

25 March, 2014

Plan: PROPOSAL #1





Project: WELD COUNTY, COLORADO (NAD 83)
Site: NW NW SEC. 22 T5N R61W 6th P.M.
Well: PRONGHORN K-O-22HNB
Wellbore: ORIGINAL WELLBORE
Design: PROPOSAL #1

ANNOTATIONS

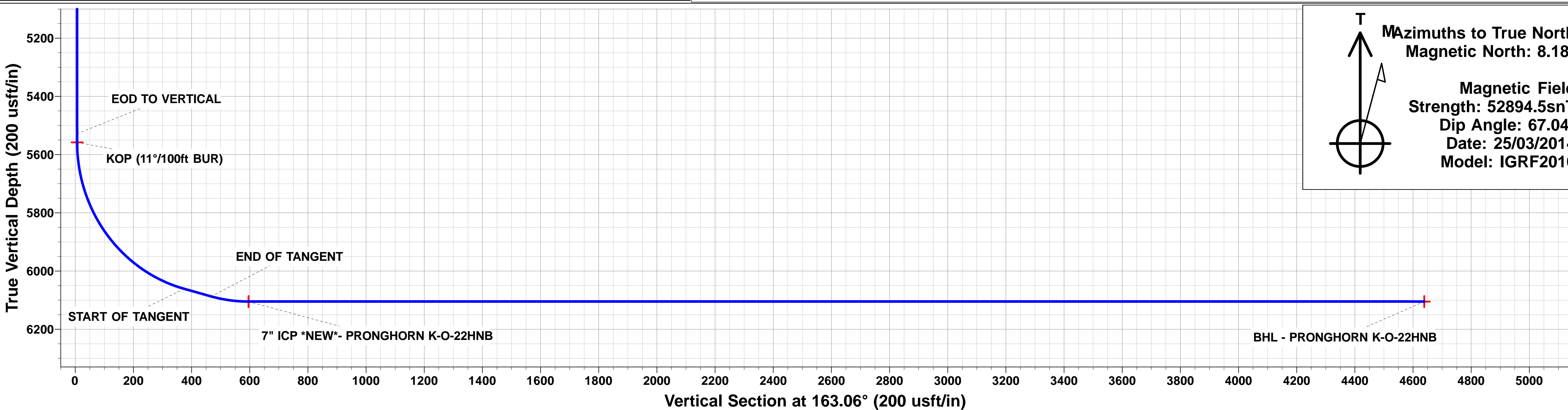
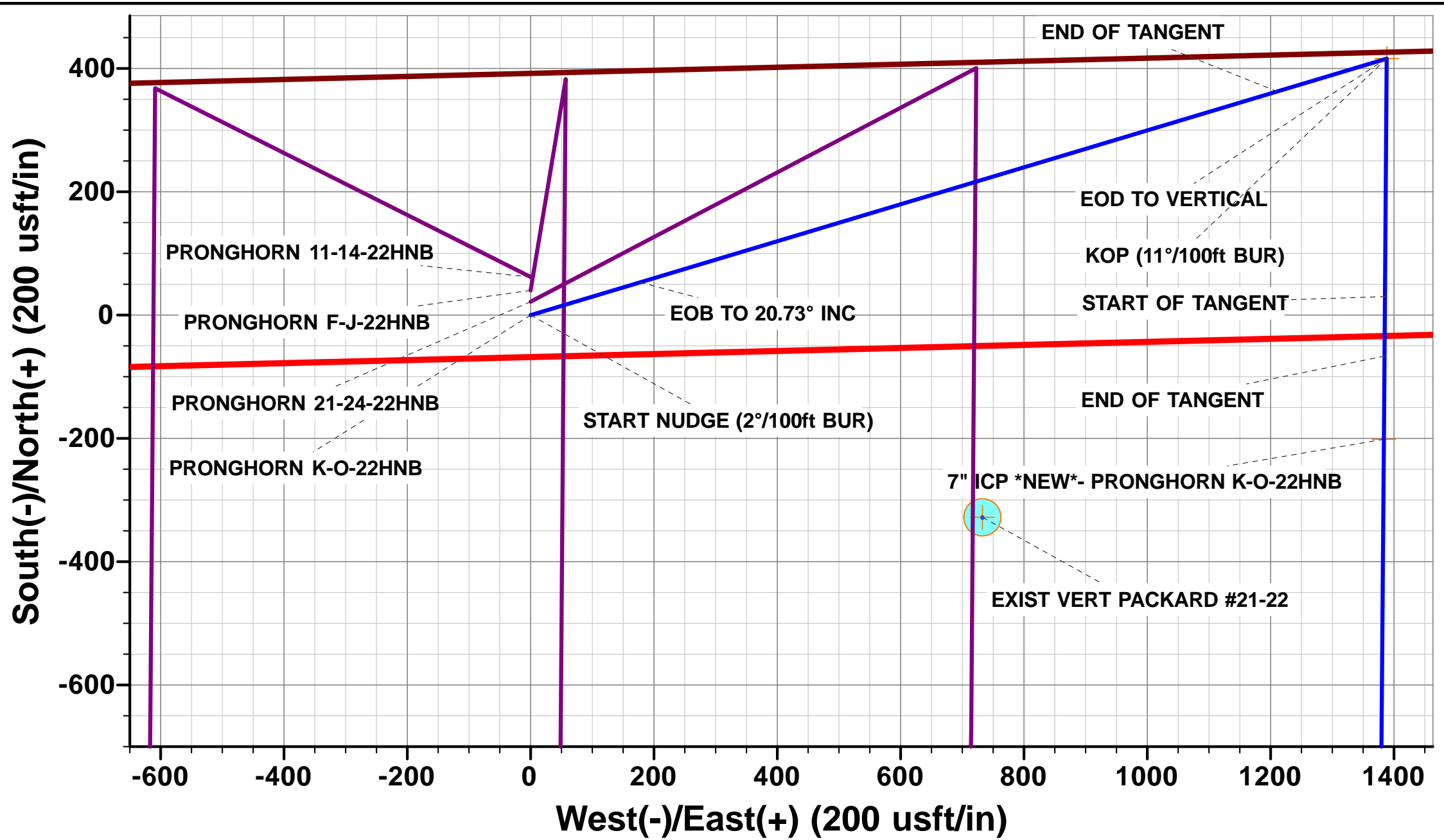
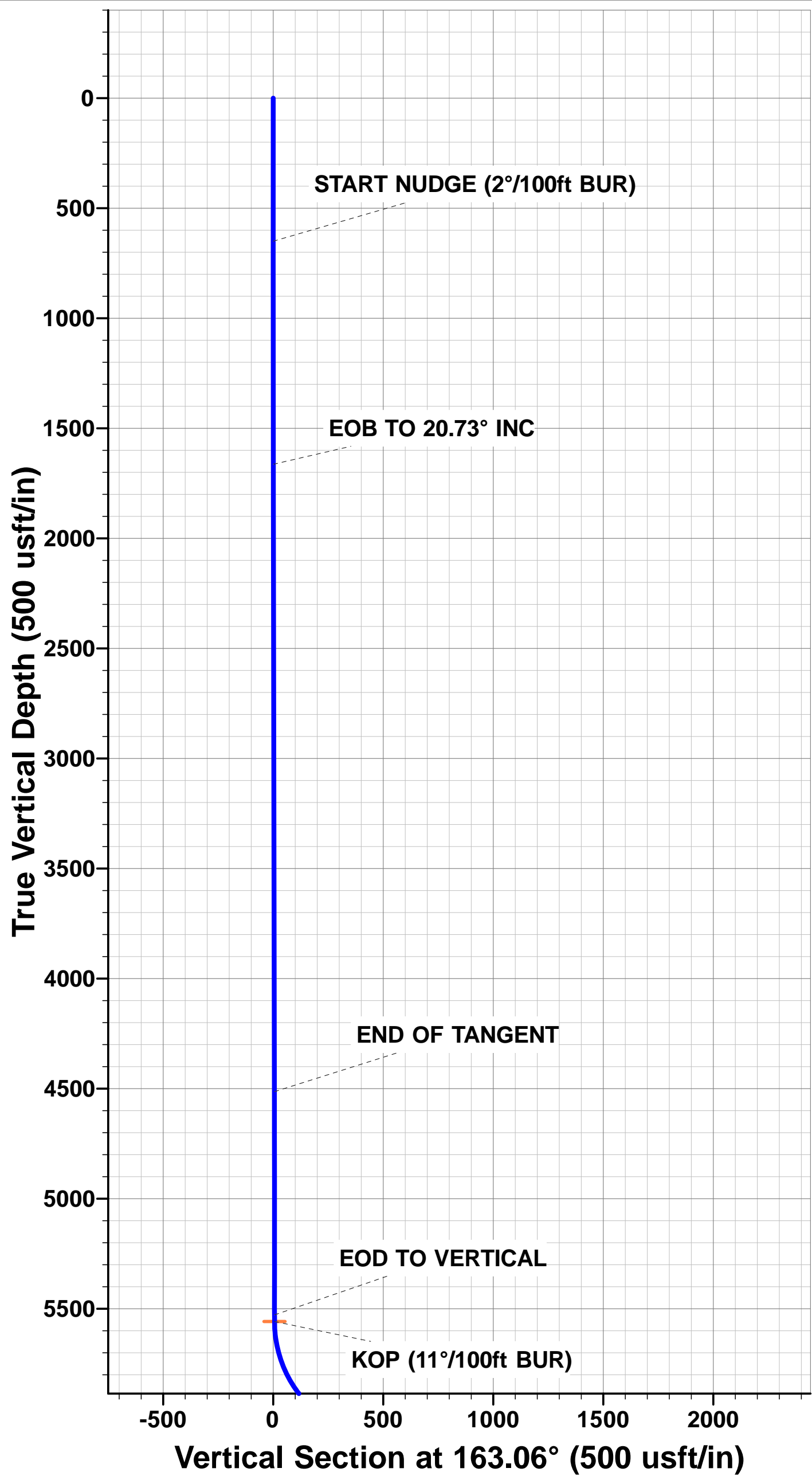
TVD	MD	Inc	Azi	+N/-S	+E/-W	VSec	Dep	Annotation
650.0	650.0	0.00	0.00	0.0	0.0	0.0	0.0	START NUDGE (2°/100ft BUR)
1663.8	1686.3	20.73	73.32	53.2	177.6	0.8	185.4	EOB TO 20.73° INC
4514.3	4734.0	20.73	73.32	362.9	1210.8	5.6	1264.0	END OF TANGENT
5528.2	5770.4	0.00	0.00	416.1	1388.4	6.4	1449.4	EOD TO VERTICAL
5558.2	5800.4	0.00	0.00	416.1	1388.4	6.4	1449.4	KOP (11°/100ft BUR)
6061.3	6482.2	75.00	180.44	30.0	1385.4	374.9	1835.5	START OF TANGENT
6087.2	6582.2	75.00	180.44	-66.6	1384.7	467.1	1932.1	END OF TANGENT
6105.0	6718.5	90.00	180.44	-201.3	1383.7	595.7	2066.8	7" ICP *NEW*- PRONGHORN K-O-22HNB
6105.0	10954.6	90.00	180.44	-4437.3	1351.2	4638.4	6302.9	BHL - PRONGHORN K-O-22HNB

LOCAL COORDINATES:

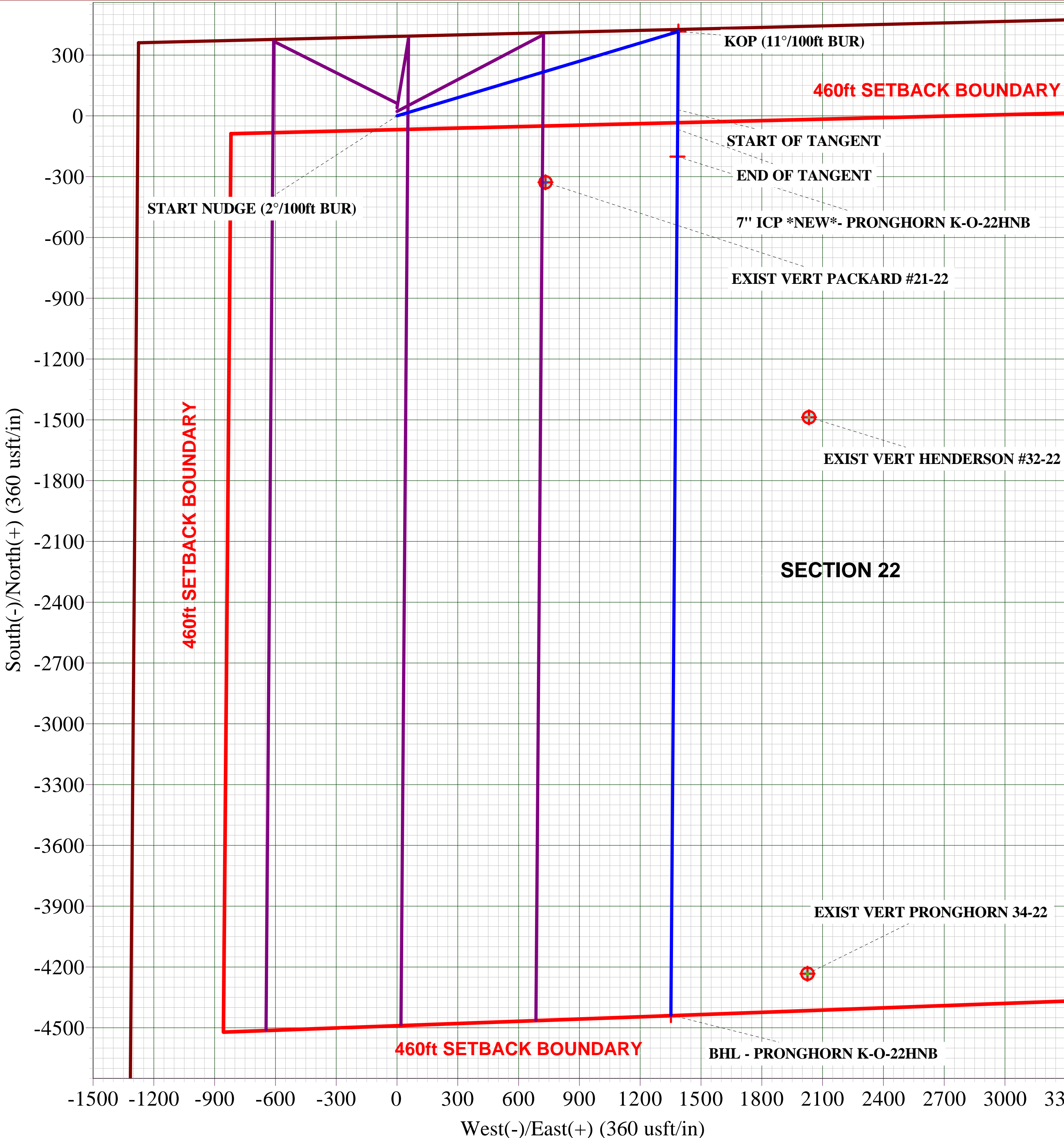
SHL: 392ft FNL & 1278ft FWL Sec 22
7" ICP *NEW*: ft 626.7ft FNL & 2666ft FWL Sec 22
BHL: 470ft FSL & 2666ft FWL Sec 22

WELLBORE TARGET DETAILS (LAT/LONG)

Name	TVD	+N/-S	+E/-W	Latitude	Longitude
KOP - PRONGHORN K-O-22HNB	5558.2	416.1	1388.4	40.393732	-104.194866
BHL - PRONGHORN K-O-22HNB	6105.0	-4437.3	1351.2	40.380410	-104.195000
7" ICP *NEW*- PRONGHORN K-O-22HNB	6105.0	-201.3	1383.7	40.392037	-104.194883



Mazimuths to True North
Magnetic North: 8.18°
Magnetic Field
Strength: 52894.5snT
Dip Angle: 67.04°
Date: 25/03/2014
Model: IGRF2010



Planning Report



Database:	EDM 5000.1 Single User Db	Local Co-ordinate Reference:	Well PRONGHORN K-O-22HNB
Company:	BONANZA CREEK ENERGY INC.	TVD Reference:	KB-EST @ 4678.0usft (Original Well Elev)
Project:	WELD COUNTY, COLORADO (NAD 83)	MD Reference:	KB-EST @ 4678.0usft (Original Well Elev)
Site:	NW NW SEC. 22 T5N R61W 6th P.M.	North Reference:	True
Well:	PRONGHORN K-O-22HNB	Survey Calculation Method:	Minimum Curvature
Wellbore:	ORIGINAL WELLBORE		
Design:	PROPOSAL #1		

Project	WELD COUNTY, COLORADO (NAD 83)		
Map System:	US State Plane 1983	System Datum:	Mean Sea Level
Geo Datum:	North American Datum 1983		
Map Zone:	Colorado Northern Zone		Using geodetic scale factor

Site	NW NW SEC. 22 T5N R61W 6th P.M.		
Site Position:		Northing:	1,388,515.79 usft
From:	Lat/Long	Easting:	3,362,131.84 usft
Position Uncertainty:	0.0 usft	Slot Radius:	1.10000ft
		Latitude:	40.392590
		Longitude:	-104.199850
		Grid Convergence:	0.84 °

Well	PRONGHORN K-O-22HNB		
Well Position	+N/-S	0.0 usft	Northing: 1,388,515.79 usfi
	+E/-W	0.0 usft	Easting: 3,362,131.84 usfi
Position Uncertainty	0.0 usft	Wellhead Elevation:	usfi
		Latitude:	40.392590
		Longitude:	-104.199850
		Ground Level:	4,661.0 usft

Wellbore	ORIGINAL WELLBORE				
Magnetics	Model Name	Sample Date	Declination (°)	Dip Angle (°)	Field Strength (nT)
	IGRF2010	25/03/2014	8.18	67.04	52,895

Design	PROPOSAL #1			
Audit Notes:				
Version:	Phase:	PROTOTYPE	Tie On Depth:	0.0
Vertical Section:	Depth From (TVD) (usft)	+N/-S (usft)	+E/-W (usft)	Direction (°)
	6,105.0	0.0	0.0	163.06

Plan Sections											
MD (usft)	Inc (°)	Azi (°)	Vertical Depth	SS (usft)	+N/-S (usft)	+E/-W (usft)	Dogleg Rate (°/100usf)	Build Rate (°/100usf)	Turn Rate (°/100usf)	TFO (°)	Target
0.0	0.00	0.00	0.0	-4,678.0	0.0	0.0	0.00	0.00	0.00	0.00	
650.0	0.00	0.00	650.0	-4,028.0	0.0	0.0	0.00	0.00	0.00	0.00	
1,686.3	20.73	73.32	1,663.9	-3,014.1	53.2	177.6	2.00	2.00	0.00	73.32	
4,734.0	20.73	73.32	4,514.3	-163.7	362.9	1,210.8	0.00	0.00	0.00	0.00	
5,770.4	0.00	0.00	5,528.2	850.2	416.1	1,388.4	2.00	-2.00	0.00	180.00	
5,800.4	0.00	0.00	5,558.2	880.2	416.1	1,388.4	0.00	0.00	0.00	0.00	KOP - PRONGHOF
6,482.2	75.00	180.44	6,061.3	1,383.3	30.1	1,385.4	11.00	11.00	0.00	180.44	
6,582.2	75.00	180.44	6,087.2	1,409.2	-66.5	1,384.7	0.00	0.00	0.00	0.00	
6,718.5	90.00	180.44	6,105.0	1,427.0	-201.3	1,383.7	11.00	11.00	0.00	0.00	
10,954.6	90.00	180.44	6,105.0	1,427.0	-4,437.3	1,351.2	0.00	0.00	0.00	-117.34	BHL - PRONGHOR

Planning Report



Database:	EDM 5000.1 Single User Db	Local Co-ordinate Reference:	Well PRONGHORN K-O-22HNB
Company:	BONANZA CREEK ENERGY INC.	TVD Reference:	KB-EST @ 4678.0usft (Original Well Elev)
Project:	WELD COUNTY, COLORADO (NAD 83)	MD Reference:	KB-EST @ 4678.0usft (Original Well Elev)
Site:	NW NW SEC. 22 T5N R61W 6th P.M.	North Reference:	True
Well:	PRONGHORN K-O-22HNB	Survey Calculation Method:	Minimum Curvature
Wellbore:	ORIGINAL WELLBORE		
Design:	PROPOSAL #1		

Planned Survey

MD (usft)	Inc (°)	Azi (°)	TVD (usft)	SS (usft)	+N/-S (usft)	+E/-W (usft)	Vertical Section (usft)	Dogleg Rate (°/100usft)	Build Rate (°/100usft)	Turn Rate (°/100usft)
0.0	0.00	0.00	0.0	4,678.00	0.0	0.0	0.0	0.00	0.00	0.00
100.0	0.00	0.00	100.0	4,578.00	0.0	0.0	0.0	0.00	0.00	0.00
200.0	0.00	0.00	200.0	4,478.00	0.0	0.0	0.0	0.00	0.00	0.00
300.0	0.00	0.00	300.0	4,378.00	0.0	0.0	0.0	0.00	0.00	0.00
400.0	0.00	0.00	400.0	4,278.00	0.0	0.0	0.0	0.00	0.00	0.00
500.0	0.00	0.00	500.0	4,178.00	0.0	0.0	0.0	0.00	0.00	0.00
600.0	0.00	0.00	600.0	4,078.00	0.0	0.0	0.0	0.00	0.00	0.00
START NUDGE (2°/100ft BUR)										
650.0	0.00	0.00	650.0	4,028.00	0.0	0.0	0.0	0.00	0.00	0.00
700.0	1.00	73.32	700.0	3,978.00	0.1	0.4	0.0	2.00	2.00	0.00
800.0	3.00	73.32	799.9	3,878.07	1.1	3.8	0.0	2.00	2.00	0.00
900.0	5.00	73.32	899.7	3,778.32	3.1	10.4	0.0	2.00	2.00	0.00
1,000.0	7.00	73.32	999.1	3,678.87	6.1	20.5	0.1	2.00	2.00	0.00
1,100.0	9.00	73.32	1,098.2	3,579.85	10.1	33.8	0.2	2.00	2.00	0.00
1,200.0	11.00	73.32	1,196.6	3,481.37	15.1	50.4	0.2	2.00	2.00	0.00
1,300.0	13.00	73.32	1,294.4	3,383.56	21.1	70.3	0.3	2.00	2.00	0.00
1,400.0	15.00	73.32	1,391.5	3,286.54	28.0	93.5	0.4	2.00	2.00	0.00
1,500.0	17.00	73.32	1,487.6	3,190.42	35.9	119.9	0.6	2.00	2.00	0.00
1,600.0	19.00	73.32	1,582.7	3,095.32	44.8	149.5	0.7	2.00	2.00	0.00
EOB TO 20.73° INC										
1,686.3	20.73	73.32	1,663.9	3,014.14	53.2	177.6	0.8	2.00	2.00	0.00
1,700.0	20.73	73.32	1,676.7	3,001.34	54.6	182.2	0.8	0.00	0.00	0.00
1,800.0	20.73	73.32	1,770.2	2,907.81	64.8	216.1	1.0	0.00	0.00	0.00
1,900.0	20.73	73.32	1,863.7	2,814.28	74.9	250.0	1.2	0.00	0.00	0.00
2,000.0	20.73	73.32	1,957.2	2,720.76	85.1	283.9	1.3	0.00	0.00	0.00
2,100.0	20.73	73.32	2,050.8	2,627.23	95.3	317.8	1.5	0.00	0.00	0.00
2,200.0	20.73	73.32	2,144.3	2,533.70	105.4	351.7	1.6	0.00	0.00	0.00
2,300.0	20.73	73.32	2,237.8	2,440.17	115.6	385.6	1.8	0.00	0.00	0.00
2,400.0	20.73	73.32	2,331.4	2,346.64	125.7	419.5	1.9	0.00	0.00	0.00
2,500.0	20.73	73.32	2,424.9	2,253.11	135.9	453.4	2.1	0.00	0.00	0.00
2,600.0	20.73	73.32	2,518.4	2,159.59	146.1	487.3	2.2	0.00	0.00	0.00
2,700.0	20.73	73.32	2,611.9	2,066.06	156.2	521.2	2.4	0.00	0.00	0.00
2,800.0	20.73	73.32	2,705.5	1,972.53	166.4	555.1	2.6	0.00	0.00	0.00
2,900.0	20.73	73.32	2,799.0	1,879.00	176.5	589.0	2.7	0.00	0.00	0.00
3,000.0	20.73	73.32	2,892.5	1,785.47	186.7	622.9	2.9	0.00	0.00	0.00
3,100.0	20.73	73.32	2,986.1	1,691.95	196.9	656.8	3.0	0.00	0.00	0.00
3,200.0	20.73	73.32	3,079.6	1,598.42	207.0	690.8	3.2	0.00	0.00	0.00
3,300.0	20.73	73.32	3,173.1	1,504.89	217.2	724.7	3.3	0.00	0.00	0.00
3,400.0	20.73	73.32	3,266.6	1,411.36	227.3	758.6	3.5	0.00	0.00	0.00
3,500.0	20.73	73.32	3,360.2	1,317.83	237.5	792.5	3.7	0.00	0.00	0.00
3,600.0	20.73	73.32	3,453.7	1,224.30	247.7	826.4	3.8	0.00	0.00	0.00
3,700.0	20.73	73.32	3,547.2	1,130.78	257.8	860.3	4.0	0.00	0.00	0.00
3,800.0	20.73	73.32	3,640.8	1,037.25	268.0	894.2	4.1	0.00	0.00	0.00
3,900.0	20.73	73.32	3,734.3	943.72	278.1	928.1	4.3	0.00	0.00	0.00
4,000.0	20.73	73.32	3,827.8	850.19	288.3	962.0	4.4	0.00	0.00	0.00
4,100.0	20.73	73.32	3,921.3	756.66	298.5	995.9	4.6	0.00	0.00	0.00
4,200.0	20.73	73.32	4,014.9	663.14	308.6	1,029.8	4.7	0.00	0.00	0.00
4,300.0	20.73	73.32	4,108.4	569.61	318.8	1,063.7	4.9	0.00	0.00	0.00
4,400.0	20.73	73.32	4,201.9	476.08	328.9	1,097.6	5.1	0.00	0.00	0.00
4,500.0	20.73	73.32	4,295.4	382.55	339.1	1,131.5	5.2	0.00	0.00	0.00
4,600.0	20.73	73.32	4,389.0	289.02	349.3	1,165.4	5.4	0.00	0.00	0.00
4,700.0	20.73	73.32	4,482.5	195.50	359.4	1,199.3	5.5	0.00	0.00	0.00

END OF TANGENT

Planning Report



Database:	EDM 5000.1 Single User Db	Local Co-ordinate Reference:	Well PRONGHORN K-O-22HNB
Company:	BONANZA CREEK ENERGY INC.	TVD Reference:	KB-EST @ 4678.0usft (Original Well Elev)
Project:	WELD COUNTY, COLORADO (NAD 83)	MD Reference:	KB-EST @ 4678.0usft (Original Well Elev)
Site:	NW NW SEC. 22 T5N R61W 6th P.M.	North Reference:	True
Well:	PRONGHORN K-O-22HNB	Survey Calculation Method:	Minimum Curvature
Wellbore:	ORIGINAL WELLBORE		
Design:	PROPOSAL #1		

Planned Survey

MD (usft)	Inc (°)	Azi (°)	TVD (usft)	SS (usft)	+N/-S (usft)	+E/-W (usft)	Vertical Section (usft)	Dogleg Rate (°/100usft)	Build Rate (°/100usft)	Turn Rate (°/100usft)
4,734.0	20.73	73.32	4,514.3	163.66	362.9	1,210.8	5.6	0.00	0.00	0.00
4,800.0	19.41	73.32	4,576.3	101.70	369.4	1,232.5	5.7	2.00	-2.00	0.00
4,900.0	17.41	73.32	4,671.2	6.82	378.4	1,262.7	5.8	2.00	-2.00	0.00
5,000.0	15.41	73.32	4,767.1	-89.10	386.5	1,289.8	5.9	2.00	-2.00	0.00
5,100.0	13.41	73.32	4,863.9	-185.95	393.7	1,313.6	6.1	2.00	-2.00	0.00
5,200.0	11.41	73.32	4,961.6	-283.61	399.9	1,334.2	6.2	2.00	-2.00	0.00
5,300.0	9.41	73.32	5,060.0	-381.96	405.0	1,351.5	6.2	2.00	-2.00	0.00
5,400.0	7.41	73.32	5,158.9	-480.88	409.2	1,365.5	6.3	2.00	-2.00	0.00
5,500.0	5.41	73.32	5,258.2	-580.25	412.4	1,376.2	6.3	2.00	-2.00	0.00
5,600.0	3.41	73.32	5,357.9	-679.95	414.6	1,383.5	6.4	2.00	-2.00	0.00
5,700.0	1.41	73.32	5,457.9	-779.85	415.9	1,387.6	6.4	2.00	-2.00	0.00
EOD TO VERTICAL										
5,770.4	0.00	0.00	5,528.2	-850.20	416.1	1,388.4	6.4	2.00	-2.00	0.00
5,800.0	0.00	0.00	5,557.8	-879.85	416.1	1,388.4	6.4	0.00	0.00	0.00
KOP (11°/100ft BUR)										
5,800.4	0.00	0.00	5,558.2	-880.20	416.1	1,388.4	6.4	0.00	0.00	0.00
5,900.0	10.96	180.44	5,657.2	-979.24	406.6	1,388.3	15.5	11.00	11.00	0.00
6,000.0	21.96	180.44	5,753.0	-1,074.99	378.3	1,388.1	42.5	11.00	11.00	0.00
6,100.0	32.96	180.44	5,841.6	-1,163.59	332.3	1,387.8	86.4	11.00	11.00	0.00
6,200.0	43.96	180.44	5,919.8	-1,241.77	270.2	1,387.3	145.7	11.00	11.00	0.00
6,300.0	54.96	180.44	5,984.7	-1,306.67	194.3	1,386.7	218.1	11.00	11.00	0.00
6,400.0	65.96	180.44	6,033.9	-1,355.90	107.4	1,386.0	301.0	11.00	11.00	0.00
START OF TANGENT										
6,482.2	75.00	180.44	6,061.3	-1,383.32	30.1	1,385.4	374.8	11.00	11.00	0.00
6,500.0	75.00	180.44	6,065.9	-1,387.94	12.8	1,385.3	391.3	0.00	0.00	0.00
END OF TANGENT										
6,582.2	75.00	180.44	6,087.2	-1,409.20	-66.5	1,384.7	467.0	0.00	0.00	0.00
6,600.0	76.96	180.44	6,091.5	-1,413.52	-83.8	1,384.6	483.5	11.00	11.00	0.00
6,700.0	87.96	180.44	6,104.6	-1,426.62	-182.8	1,383.8	578.0	11.00	11.00	0.00
7" ICP *NEW* - PRONGHORN K-O-22HNB										
6,718.5	90.00	180.44	6,105.0	-1,426.95	-201.3	1,383.7	595.7	11.00	11.00	0.00
6,800.0	90.00	180.44	6,105.0	-1,426.95	-282.8	1,383.0	673.4	0.00	0.00	0.00
6,900.0	90.00	180.44	6,105.0	-1,426.95	-382.8	1,382.3	768.9	0.00	0.00	0.00
7,000.0	90.00	180.44	6,105.0	-1,426.95	-482.8	1,381.5	864.3	0.00	0.00	0.00
7,100.0	90.00	180.44	6,105.0	-1,426.95	-582.8	1,380.7	959.7	0.00	0.00	0.00
7,200.0	90.00	180.44	6,105.0	-1,426.95	-682.8	1,380.0	1,055.2	0.00	0.00	0.00
7,300.0	90.00	180.44	6,105.0	-1,426.95	-782.8	1,379.2	1,150.6	0.00	0.00	0.00
7,400.0	90.00	180.44	6,105.0	-1,426.95	-882.8	1,378.4	1,246.1	0.00	0.00	0.00
7,500.0	90.00	180.44	6,105.0	-1,426.95	-982.8	1,377.7	1,341.5	0.00	0.00	0.00
7,600.0	90.00	180.44	6,105.0	-1,426.95	-1,082.8	1,376.9	1,436.9	0.00	0.00	0.00
7,700.0	90.00	180.44	6,105.0	-1,426.96	-1,182.8	1,376.1	1,532.4	0.00	0.00	0.00
7,800.0	90.00	180.44	6,105.0	-1,426.96	-1,282.8	1,375.4	1,627.8	0.00	0.00	0.00
7,900.0	90.00	180.44	6,105.0	-1,426.96	-1,382.8	1,374.6	1,723.2	0.00	0.00	0.00
8,000.0	90.00	180.44	6,105.0	-1,426.96	-1,482.8	1,373.8	1,818.7	0.00	0.00	0.00
8,100.0	90.00	180.44	6,105.0	-1,426.96	-1,582.8	1,373.1	1,914.1	0.00	0.00	0.00
8,200.0	90.00	180.44	6,105.0	-1,426.96	-1,682.8	1,372.3	2,009.5	0.00	0.00	0.00
8,300.0	90.00	180.44	6,105.0	-1,426.96	-1,782.8	1,371.5	2,105.0	0.00	0.00	0.00
8,400.0	90.00	180.44	6,105.0	-1,426.96	-1,882.8	1,370.8	2,200.4	0.00	0.00	0.00
8,500.0	90.00	180.44	6,105.0	-1,426.96	-1,982.8	1,370.0	2,295.9	0.00	0.00	0.00
8,600.0	90.00	180.44	6,105.0	-1,426.96	-2,082.8	1,369.2	2,391.3	0.00	0.00	0.00
8,700.0	90.00	180.44	6,105.0	-1,426.96	-2,182.8	1,368.5	2,486.7	0.00	0.00	0.00
8,800.0	90.00	180.44	6,105.0	-1,426.96	-2,282.7	1,367.7	2,582.2	0.00	0.00	0.00
8,900.0	90.00	180.44	6,105.0	-1,426.97	-2,382.7	1,366.9	2,677.6	0.00	0.00	0.00
9,000.0	90.00	180.44	6,105.0	-1,426.97	-2,482.7	1,366.2	2,773.0	0.00	0.00	0.00

Planning Report



Database:	EDM 5000.1 Single User Db	Local Co-ordinate Reference:	Well PRONGHORN K-O-22HNB
Company:	BONANZA CREEK ENERGY INC.	TVD Reference:	KB-EST @ 4678.0usft (Original Well Elev)
Project:	WELD COUNTY, COLORADO (NAD 83)	MD Reference:	KB-EST @ 4678.0usft (Original Well Elev)
Site:	NW NW SEC. 22 T5N R61W 6th P.M.	North Reference:	True
Well:	PRONGHORN K-O-22HNB	Survey Calculation Method:	Minimum Curvature
Wellbore:	ORIGINAL WELLBORE		
Design:	PROPOSAL #1		

Planned Survey										
MD (usft)	Inc (°)	Azi (°)	TVD (usft)	SS (usft)	+N/-S (usft)	+E/-W (usft)	Vertical Section (usft)	Dogleg Rate (°/100usft)	Build Rate (°/100usft)	Turn Rate (°/100usft)
9,100.0	90.00	180.44	6,105.0	-1,426.97	-2,582.7	1,365.4	2,868.5	0.00	0.00	0.00
9,200.0	90.00	180.44	6,105.0	-1,426.97	-2,682.7	1,364.6	2,963.9	0.00	0.00	0.00
9,300.0	90.00	180.44	6,105.0	-1,426.97	-2,782.7	1,363.9	3,059.4	0.00	0.00	0.00
9,400.0	90.00	180.44	6,105.0	-1,426.97	-2,882.7	1,363.1	3,154.8	0.00	0.00	0.00
9,500.0	90.00	180.44	6,105.0	-1,426.97	-2,982.7	1,362.3	3,250.2	0.00	0.00	0.00
9,600.0	90.00	180.44	6,105.0	-1,426.97	-3,082.7	1,361.6	3,345.7	0.00	0.00	0.00
9,700.0	90.00	180.44	6,105.0	-1,426.98	-3,182.7	1,360.8	3,441.1	0.00	0.00	0.00
9,800.0	90.00	180.44	6,105.0	-1,426.98	-3,282.7	1,360.0	3,536.5	0.00	0.00	0.00
9,900.0	90.00	180.44	6,105.0	-1,426.98	-3,382.7	1,359.3	3,632.0	0.00	0.00	0.00
10,000.0	90.00	180.44	6,105.0	-1,426.98	-3,482.7	1,358.5	3,727.4	0.00	0.00	0.00
10,100.0	90.00	180.44	6,105.0	-1,426.98	-3,582.7	1,357.7	3,822.9	0.00	0.00	0.00
10,200.0	90.00	180.44	6,105.0	-1,426.98	-3,682.7	1,357.0	3,918.3	0.00	0.00	0.00
10,300.0	90.00	180.44	6,105.0	-1,426.99	-3,782.7	1,356.2	4,013.7	0.00	0.00	0.00
10,400.0	90.00	180.44	6,105.0	-1,426.99	-3,882.7	1,355.5	4,109.2	0.00	0.00	0.00
10,500.0	90.00	180.44	6,105.0	-1,426.99	-3,982.7	1,354.7	4,204.6	0.00	0.00	0.00
10,600.0	90.00	180.44	6,105.0	-1,426.99	-4,082.7	1,353.9	4,300.0	0.00	0.00	0.00
10,700.0	90.00	180.44	6,105.0	-1,426.99	-4,182.7	1,353.2	4,395.5	0.00	0.00	0.00
10,800.0	90.00	180.44	6,105.0	-1,427.00	-4,282.7	1,352.4	4,490.9	0.00	0.00	0.00
10,900.0	90.00	180.44	6,105.0	-1,427.00	-4,382.7	1,351.6	4,586.4	0.00	0.00	0.00
BHL - PRONGHORN K-O-22HNB										
10,954.6	90.00	180.44	6,105.0	-1,427.00	-4,437.3	1,351.2	4,638.4	0.00	0.00	0.00

Plan Annotations					
MD (usft)	TVD (usft)	Local Coordinates		Comment	
		+N/-S (usft)	+E/-W (usft)		
650.0	650.0	0.0	0.0	START NUDGE (2°/100ft BUR)	
1,686.3	1,663.9	53.2	177.6	EOB TO 20.73° INC	
4,734.0	4,514.3	362.9	1,210.8	END OF TANGENT	
5,770.4	5,528.2	416.1	1,388.4	EOD TO VERTICAL	
5,800.4	5,558.2	416.1	1,388.4	KOP (11°/100ft BUR)	
6,482.2	6,061.3	30.1	1,385.4	START OF TANGENT	
6,582.2	6,087.2	-66.5	1,384.7	END OF TANGENT	
6,718.5	6,105.0	-201.3	1,383.7	7" ICP *NEW* - PRONGHORN K-O-22HNB	
10,954.6	6,105.0	-4,437.3	1,351.2	BHL - PRONGHORN K-O-22HNB	