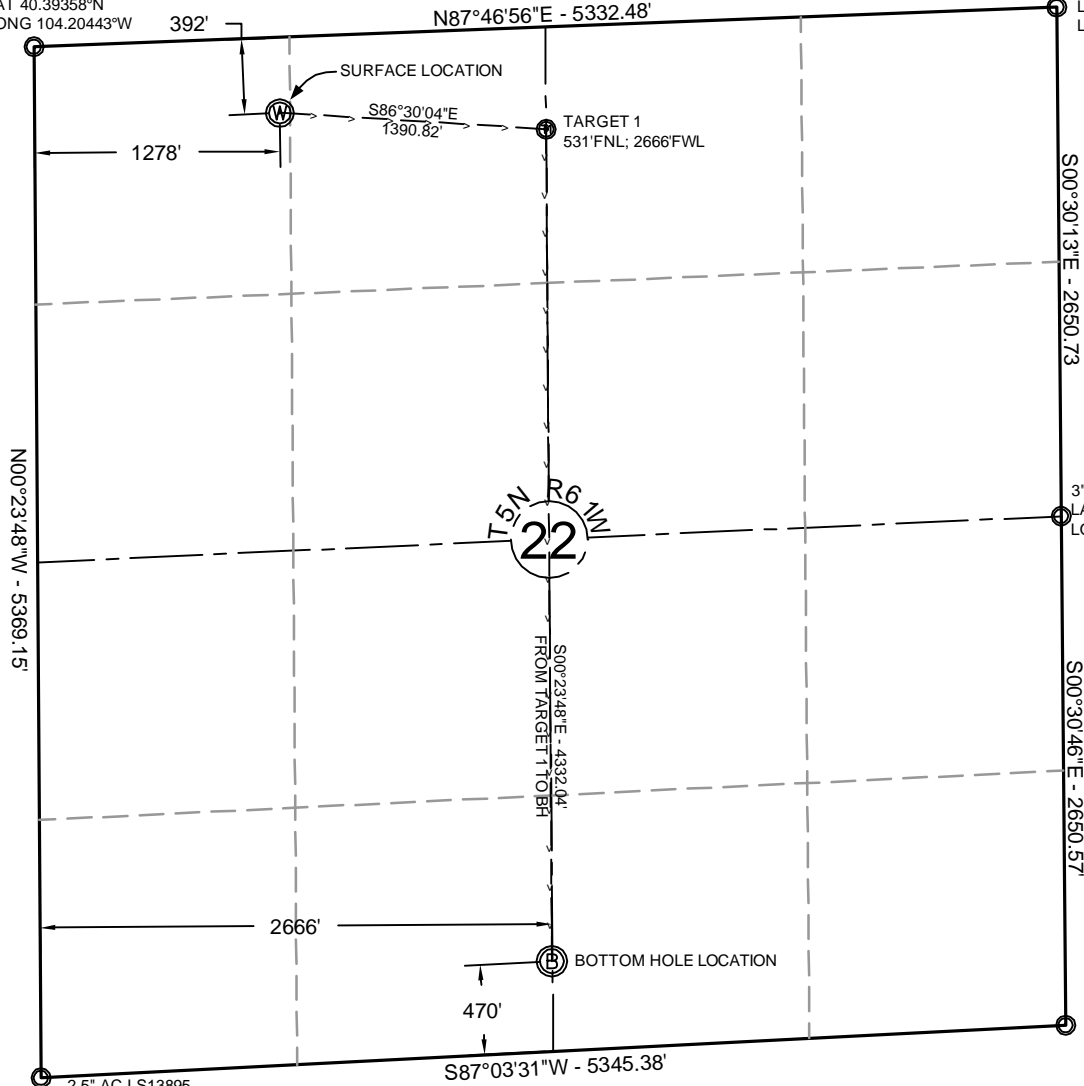


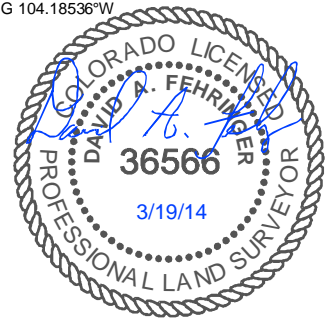
2.5" AC LS13895  
LAT 40.39358°N  
LONG 104.20443°W

2.5" AC LS37897  
LAT 40.39394°N  
LONG 104.18530°W



NOTE: Under Colorado law, you must commence any legal action based upon any defect in this certificate within three years after defect is discovered. In no event, may any action based upon any defect in this survey be commenced more than ten years after date of this certificate shown hereon. (13-80105 C.R.S.)

3" AC LS37897  
LAT 40.38666°N  
LONG 104.18536°W



3" AC LS37897  
LAT 40.37939°N  
LONG 104.18541°W

NOTES:

- All bearings are GRID based upon the Colorado State Plane Coordinate System, North Zone, NAD83(2011) derived from post-processed static GPS observations.
- Distances are at GROUND
- Vertical Datum is NAVD88 based upon GPS observations
- PDOP value equals 2.1.
- GPS operator: Dave Fehring.
- Undisturbed ground elevation at wellhead = 4661.0'
- (M) Measured distance; (R) Record distance
- Nearest Cultural Distances
  - Buildings: 5280+
  - Building Unit: 5280+
  - High Occupancy Building Unit: 5280+
  - Designated Outside Activity Area: 5280+
  - Public Road: 5280+
  - Above Ground Utility: 5280+
  - Railroad: 5280+
  - Property Line: 390'

CERTIFICATE OF SURVEYOR

I, David A. Fehring of Lander, Wyoming hereby certify that this well location certificate was prepared from notes taken during an actual survey on MARCH 5, 2014; and that it correctly shows the drilling location of BONANZA CREEK ENERGY, INC., PRONGHORN K-O-22HNB as staked during said survey. This map does not represent a boundary survey or an improvement location plat and should not be used for the establishment of boundary lines.

SURFACE LOCATION: (NAD83)  
GEODETIC COORDINATES

LAT 40.39259°  
LONG 104.19985°

STATE PLANE (CO-N NAD83)

N=1,388,516 ft  
E=3,362,131 ft

TARGET #1: (NAD83)  
GEODETIC COORDINATES

LAT 40.39230°  
LONG 104.19488°

STATE PLANE (CO-N NAD83)

N=1,388,431 ft  
E=3,363,519 ft

BOTTOM HOLE LOCATION:  
GEODETIC COORDINATES

LAT 40.38041°  
LONG 104.19500°

STATE PLANE (CO-N NAD83)

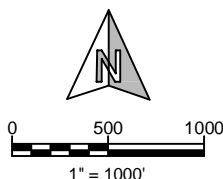
N=1,384,099 ft  
E=3,363,549 ft

SHEET NO:

1 of 1



Drawn By: DAF  
Checked By: JS  
Date: 3/14/14  
Revision:  
Date:  
Explanation:



WELL LOCATION CERTIFICATE

PRONGHORN K-O-22HNB  
392' FNL, 1278' FWL  
NW1/4NW1/4, SECTION 22,  
T.5N., R.61W., 6th PM  
WELD COUNTY, COLORADO

