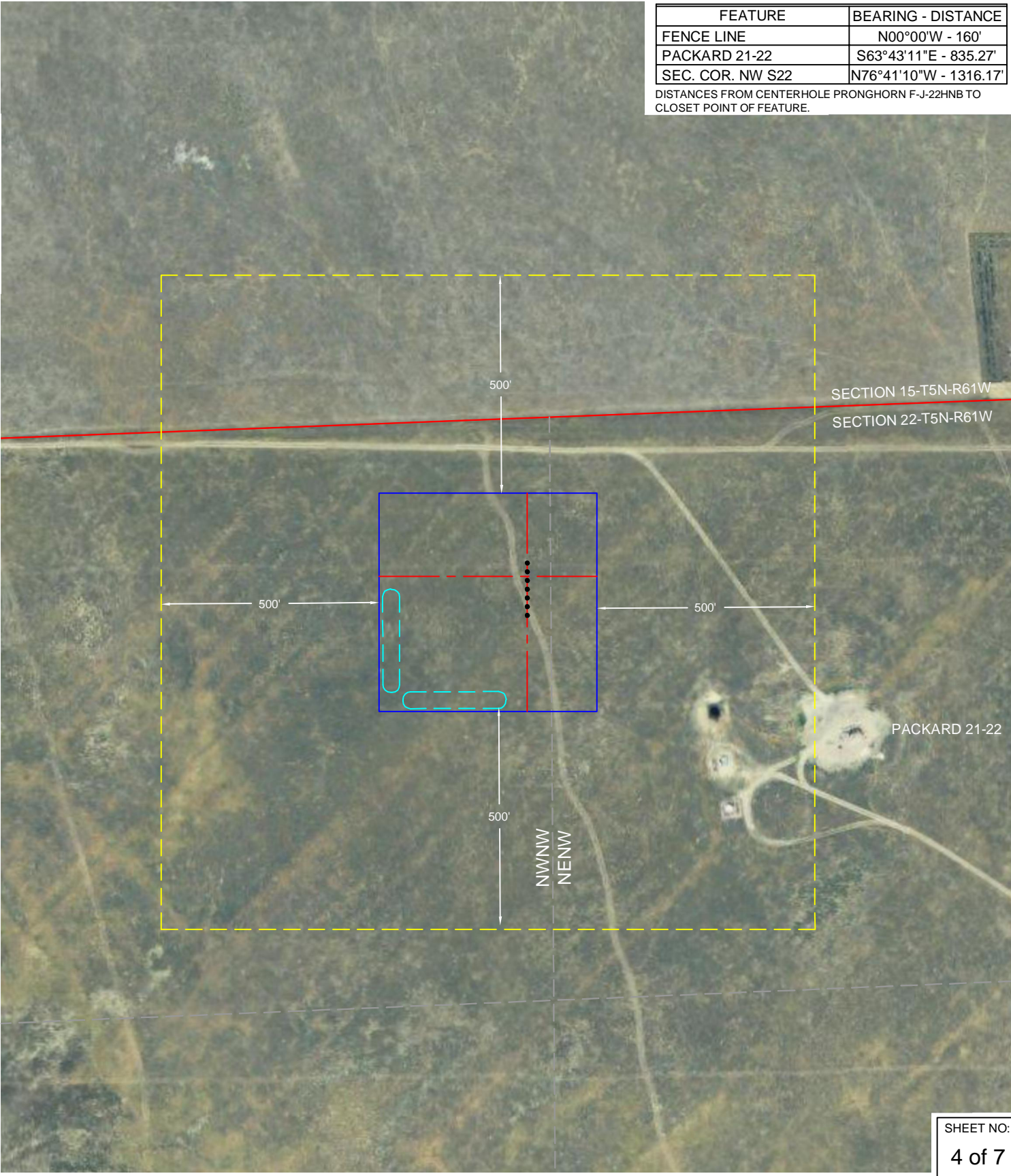


C:\FES PROJECTS\1319-01_BONANZA\5N-61W\dwg\MAP24_5-61.dwg SAVED DATE 2014-03-25 17:25

FEATURE	BEARING - DISTANCE
FENCE LINE	N00°00'W - 160'
PACKARD 21-22	S63°43'11"E - 835.27'
SEC. COR. NW S22	N76°41'10"W - 1316.17'


DISTANCES FROM CENTERHOLE PRONGHORN F-J-22HNB TO CLOSET POINT OF FEATURE.



SHEET NO:
4 of 7

Fremont
ENGINEERING & SURVEYING
64 COAL MINE RD.
LANDER, WY 82520
307-349-0840
fes@wyoming.com

Drawn By: DAF
Checked By: WJM
Date: 3/19/14
Revision: #1
Date: 3/25/14
Explanation: Add placeholders & reference map


0 100 200
1" = 200'
IF BAR LENGTH DOES NOT EQUAL 1"(ONE INCH), THIS PAGE WAS NOT PLOTTED TO THE INTENDED SCALE.

LOCATION DRAWING

PRONGHORN F-22 PAD
NW¼, SECTION 22,
T.5N., R.61W., 6th PM
WELD COUNTY, COLORADO

 **BONANZA CREEK**
410 17th Street
Denver, CO 80202
(720) 440-6100