



410 17th Street, Suite 1500  
Denver, CO 80202  
(720) 440-6100 phone  
(720) 305-0804 fax

[Bonanzacrk.com](http://Bonanzacrk.com)

April 30, 2014

Colorado Oil and Gas Conservation Commission  
The Chancery Building  
1120 Lincoln Street, Suite 801  
Denver, CO 80203

Attn: Director Matt Lepore

Re: Notice of 318A.a.(4)D. Horizontal Wellbore Spacing Unit Proposal  
Pronghorn 21-24-22HNB  
SHL: NWNW Sec 22-5N-61W, 6<sup>TH</sup> PM  
Top of Production: NENW Sec 22-5N-61W, 6<sup>TH</sup> PM  
Bottom of Production: SESW Sec 22-5N-61W, 6<sup>TH</sup> PM  
Weld County, Colorado

Director Lepore:

Bonanza Creek Energy, Inc. (Bonanza) intends to permit, drill and operate the referenced Niobrara horizontal well. As defined by Colorado Oil and Gas Conservation Commission (COGCC) Rule 318A.a.(4)D., Bonanza proposes the following wellbore spacing unit:

5N-61W-Section 22 E/2W/2, containing 160 acres more or less

Bonanza has notified the other owners in the unit and no objections were received. Copies of the notifications are maintained in Bonanza's files.

Bonanza respectfully requests that you review the enclosed wellbore spacing unit documentation and approve the referenced APD.

Please do not hesitate to call or email me at (720) 440-6100 or [REdelen@BonanzaCrk.com](mailto:REdelen@BonanzaCrk.com), should you have any questions pertaining to this matter.

Thank you for your cooperation.

Sincerely,

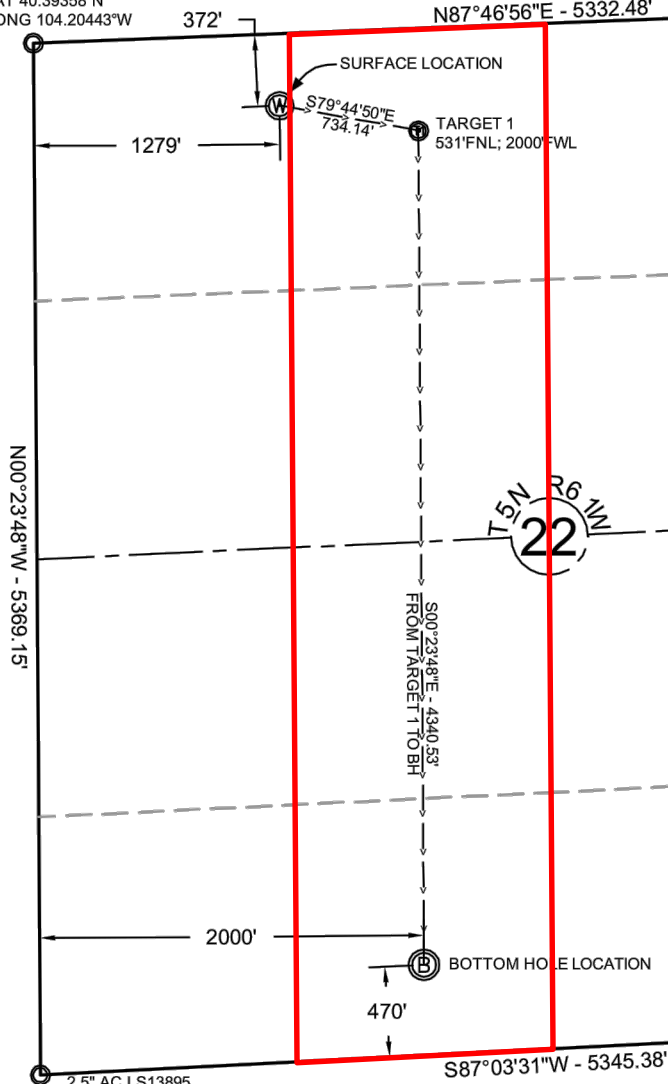
A handwritten signature in blue ink that reads 'Randy Edelen'.

Randy Edelen, P. E.  
Regulatory Specialist  
BONANZA CREEK ENERGY, INC.  
BONANZA CREEK ENERGY OPERATING COMPANY, LLC

2.5" AC LS13895  
LAT 40.39358°N  
LONG 104.20443°W

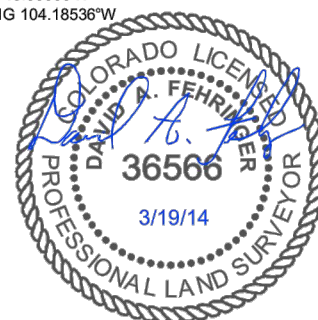
N87°46'56"E - 5332.48'

2.5" AC LS37897  
LAT 40.39394°N  
LONG 104.18530°W



NOTE: Under Colorado law, you must commence any legal action based upon any defect in this certificate within three years after defect is discovered. In no event, may any action based upon any defect in this survey be commenced more than ten years after date of this certificate shown hereon. (13-80105 C.R.S)

3" AC LS37897  
LAT 40.38666°N  
LONG 104.18536°W



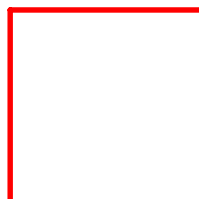
3" AC LS37897  
LAT 40.37939°N  
LONG 104.18541°W

#### NOTES:

- All bearings are GRID based upon the Colorado State Plane Coordinate System, North Zone, NAD83(2011) derived from post-processed static GPS observations.
- Distances are at GROUND
- Vertical Datum is NAVD88 based upon GPS observations
- PDOP value equals 2.1.
- GPS operator: Dave Fehring.
- Undisturbed ground elevation at wellhead = 4661.0'
- (M) Measured distance; (R) Record distance

#### CERTIFICATE OF SURVEYOR

I, David A. Fehring of Lander, Wyoming hereby certify that this well location certificate was prepared from notes taken during an actual survey on MARCH 5, 2014; and that it correctly shows the drilling location of BONANZA CREEK ENERGY, INC., PRONGHORN 21-24-22HNB as staked during said survey. This map does not represent a boundary survey or an improvement location plat and should not be used for the establishment of boundary lines.



Wellbore Spacing Unit Outline



Wellbore Spacing Unit Map  
24 March 2014 ksc

Pronghorn 21-24-22HNB  
E/2W/2 Sec 22-T5N-R61W 6th PM  
Weld County, Colorado