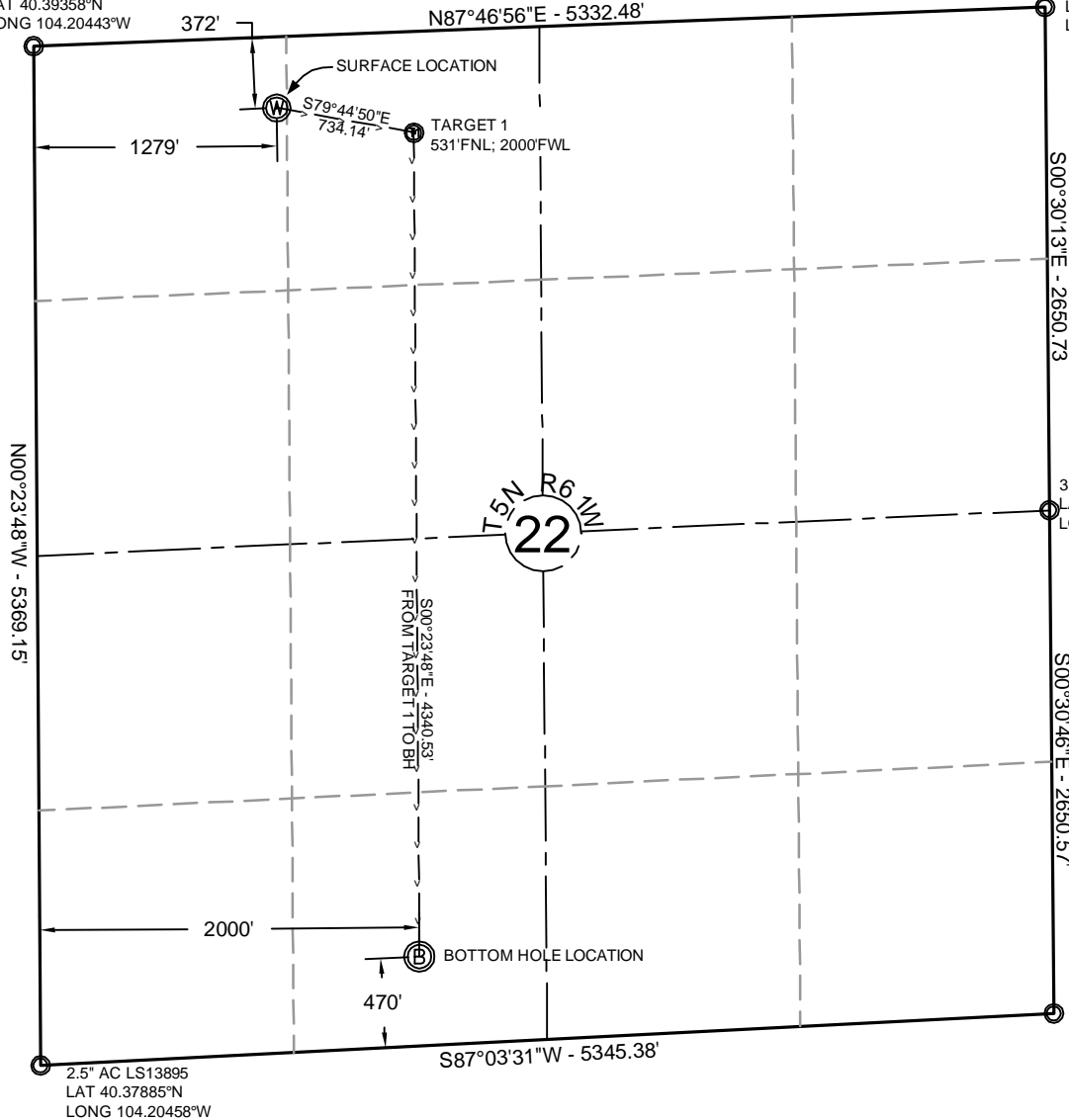
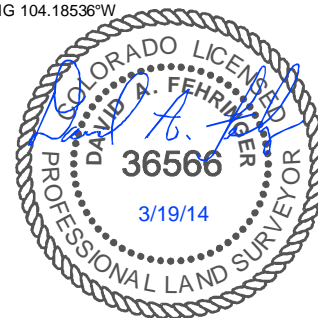


2.5" AC LS13895
LAT 40.39358°N
LONG 104.20443°W

2.5" AC LS37897
LAT 40.39394°N
LONG 104.18530°W



NOTE: Under Colorado law, you must commence any legal action based upon any defect in this certificate within three years after defect is discovered. In no event, may any action based upon any defect in this survey be commenced more than ten years after date of this certificate shown hereon. (13-80105 C.R.S.)



NOTES:

- All bearings are GRID based upon the Colorado State Plane Coordinate System, North Zone, NAD83(2011) derived from post-processed static GPS observations.
- Distances are at GROUND
- Vertical Datum is NAVD88 based upon GPS observations
- PDOP value equals 2.1.
- GPS operator: Dave Fehringer.
- Undisturbed ground elevation at wellhead = 4661.0'
- (M) Measured distance; (R) Record distance
- Nearest Cultural Distances
 - Buildings: 5280+
 - Building Unit: 5280+
 - High Occupancy Building Unit: 5280'+
 - Designated Outside Activity Area: 5280'+
 - Public Road: 5280'+
 - Above Ground Utility: 5280'+
 - Railroad: 5280'+
 - Property Line: 370'

CERTIFICATE OF SURVEYOR

I, David A. Fehringer of Lander, Wyoming hereby certify that this well location certificate was prepared from notes taken during an actual survey on MARCH 5, 2014; and that it correctly shows the drilling location of BONANZA CREEK ENERGY, INC., PRONGHORN 21-24-22HNB as staked during said survey. This map does not represent a boundary survey or an improvement location plat and should not be used for the establishment of boundary lines.

SURFACE LOCATION: (NAD83)
GEODETIC COORDINATES
LAT 40.39265°
LONG 104.19985°

STATE PLANE (CO-N NAD83)
N=1,388,536 ft
E=3,362,131 ft

TARGET #1: (NAD83)
GEODETIC COORDINATES
LAT 40.39226°
LONG 104.19727°

STATE PLANE (CO-N NAD83)
N=1,388,405 ft
E=3,362,853 ft

BOTTOM HOLE LOCATION:
GEODETIC COORDINATES
LAT 40.38034°
LONG 104.19739°

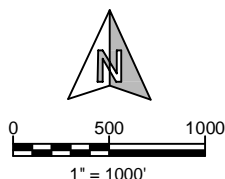
STATE PLANE (CO-N NAD83)
N=1,384,065 ft
E=3,362,883 ft

SHEET NO:

1 of 1



Drawn By: DAF
Checked By: JS
Date: 3/14/14
Revision:
Date:
Explanation:



WELL LOCATION CERTIFICATE

PRONGHORN 21-24-22HNB
372' FNL, 1279' FWL
NW¼NW¼, SECTION 22,
T.5N., R.61W., 6th PM
WELD COUNTY, COLORADO

