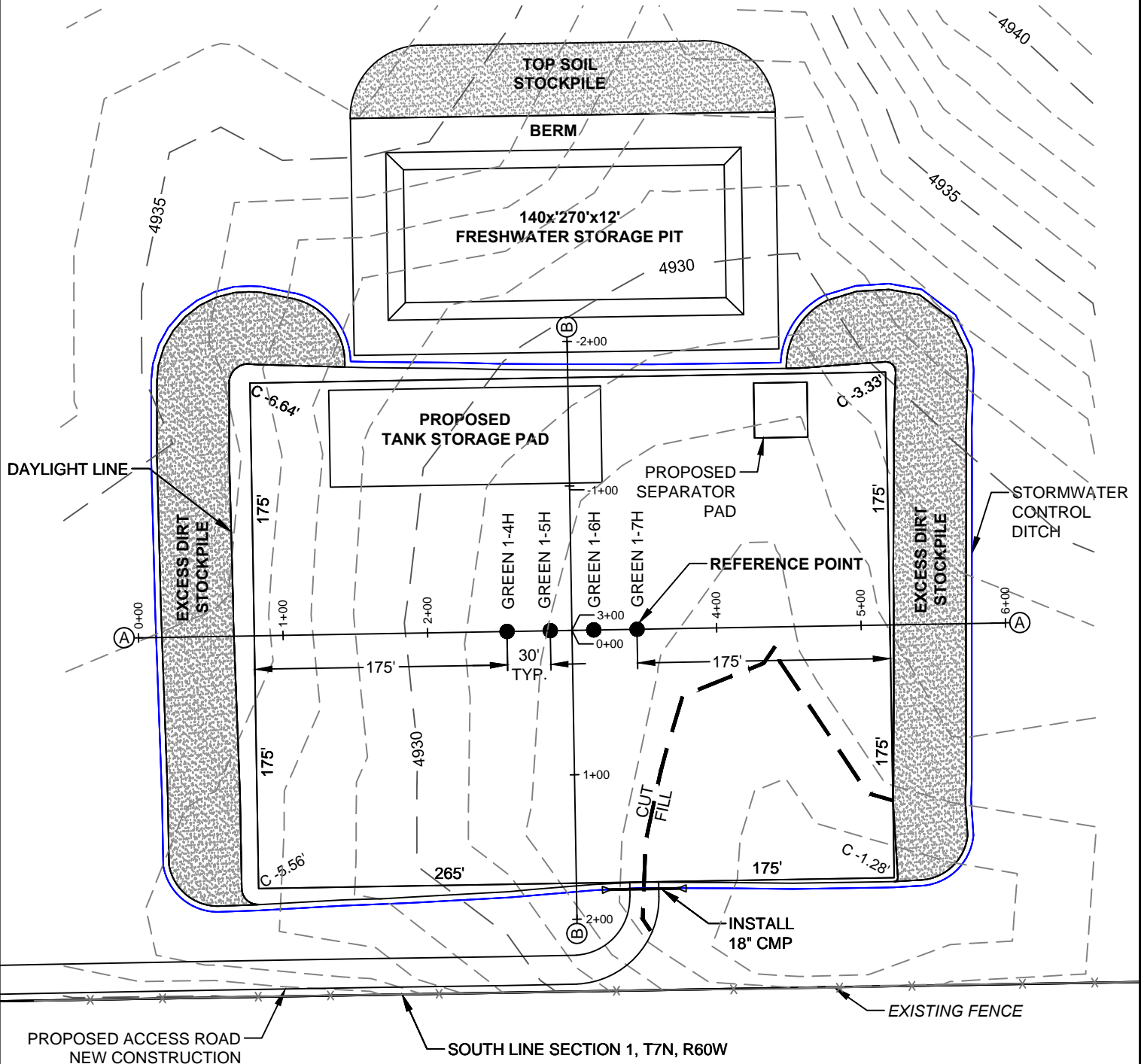


1 OF 2

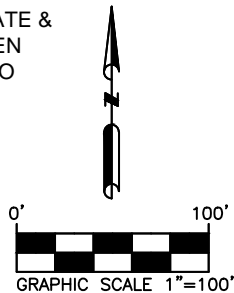


NOTE: EARTHWORK QUANTITIES ARE APPROXIMATE & FOR INFORMATION ONLY. 6" OF TOPSOIL HAS BEEN SUBTRACTED FROM EXISTING SURFACE PRIOR TO PERFORMING EARTHWORK CALCULATION.

## WELL PAD LEGEND



EXISTING CONTOUR  
PROPOSED WELLHEAD



## QUANTITIES

PAD=350'X440' ELEVATION = 4926.75'  
TOTAL CUT FOR PAD = 10,224 CY  
TOTAL FILL FOR PAD(+10% SHRINKAGE) = 999 CY  
NET EARTHWORK = 9,225 CY (CUT)  
TOPSOIL @ 6" DEPTH = 2,852 CY  
PAD AREA = 3.52 ACRES  
TOTAL DISTURBANCE AREA = 6.6± ACRES

SURFACE USE: DRYLAND CROP

PREPARED BY:



FIELD DATE:  
04-17-14

DRAWING DATE:  
04-25-14

BY:  
JAH

CHECKED BY:  
SMD

PROJECT NAME:  
GREEN 1-5H

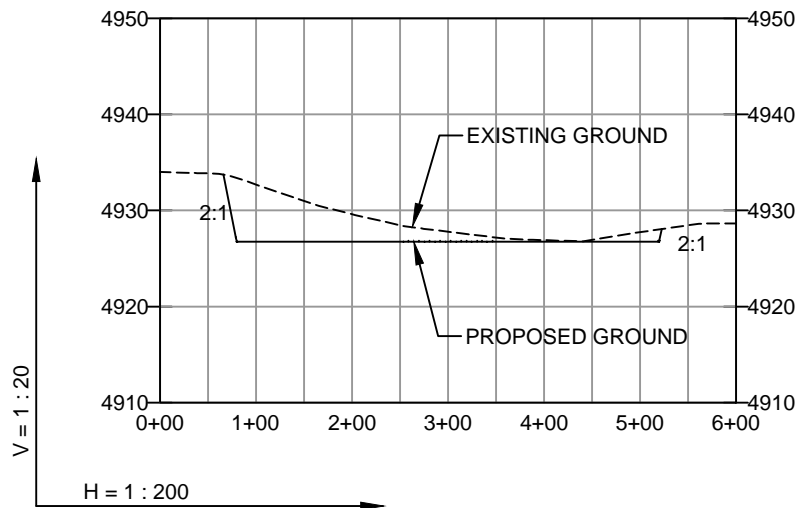
SURFACE LOCATION:  
SW 1/4, SE 1/4, SEC. 1, T7N, R60W, 6TH P.M.  
WELD COUNTY, COLORADO

RED HAWK  
PETROLEUM  
LLC

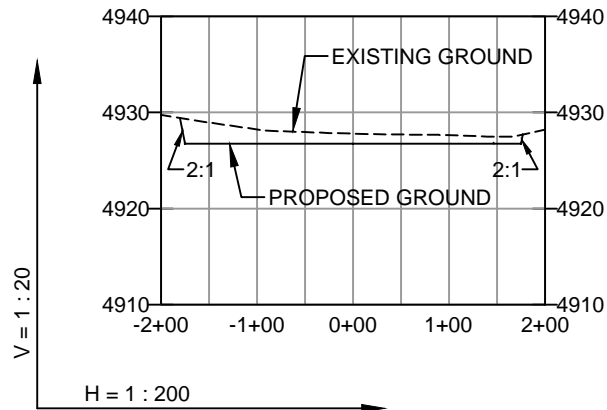
# CONSTRUCTION LAYOUT DRAWING

2 OF 2

## SECTION A



## SECTION B



PREPARED BY:



FIELD DATE:  
04-17-14

DRAWING DATE:  
04-25-14

BY:  
JAH

CHECKED BY:  
SMD

PROJECT NAME:  
GREEN 1-5H

SURFACE LOCATION:  
SW 1/4, SE 1/4, SEC. 1, T7N, R60W, 6TH P.M.  
WELD COUNTY, COLORADO

RED HAWK  
PETROLEUM  
LLC