

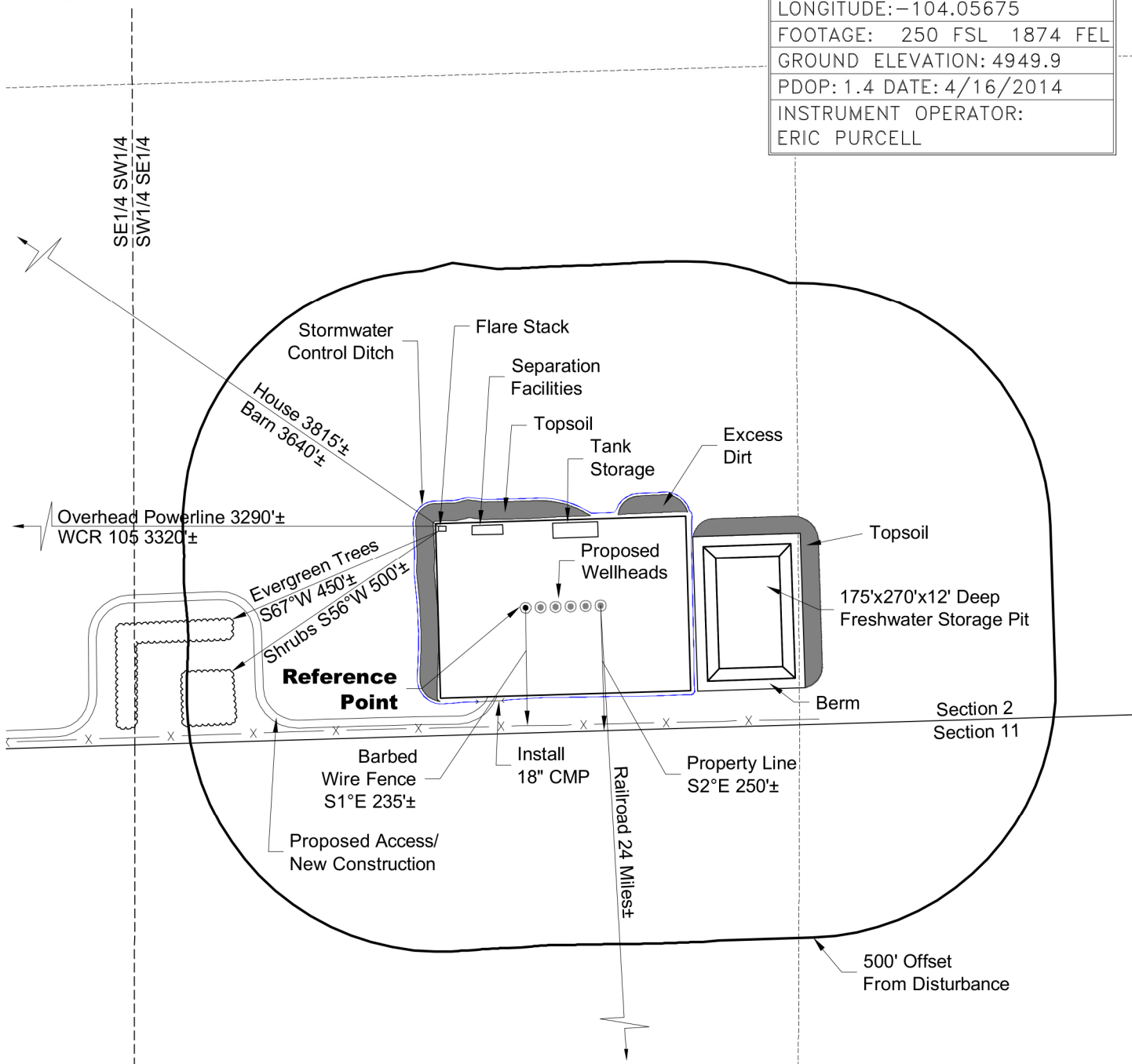
LOCATION DRAWING

PLANT COMMUNITY:
DISTURBED GRASSLAND

SURFACE USE:
CRP

REFERENCE POINT

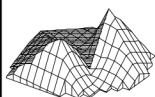
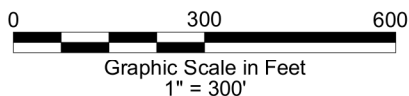
LATITUDE: 40.59780
LONGITUDE: -104.05675
FOOTAGE: 250 FSL 1874 FEL
GROUND ELEVATION: 4949.9
PDOP: 1.4 DATE: 4/16/2014
INSTRUMENT OPERATOR: ERIC PURCELL



NOTE:
ALL PRODUCTION FACILITIES WILL BE ON PAD.

PAD DISTURBANCE ACREAGE:
5.9± DRILLING OPERATIONS

4/23/14



**GEO
SURV**

LAND SURVEYING AND MAPPING
LAFAYETTE - WINTER PARK
Ph 303 666 0379 Fx 303 665 6320

RED HAWK PETROLEUM LLC
LOOMIS 2-7H PAD

SW1/4 SE1/4 SECTION 2 T7N R60W
6th PM WELD COUNTY COLORADO