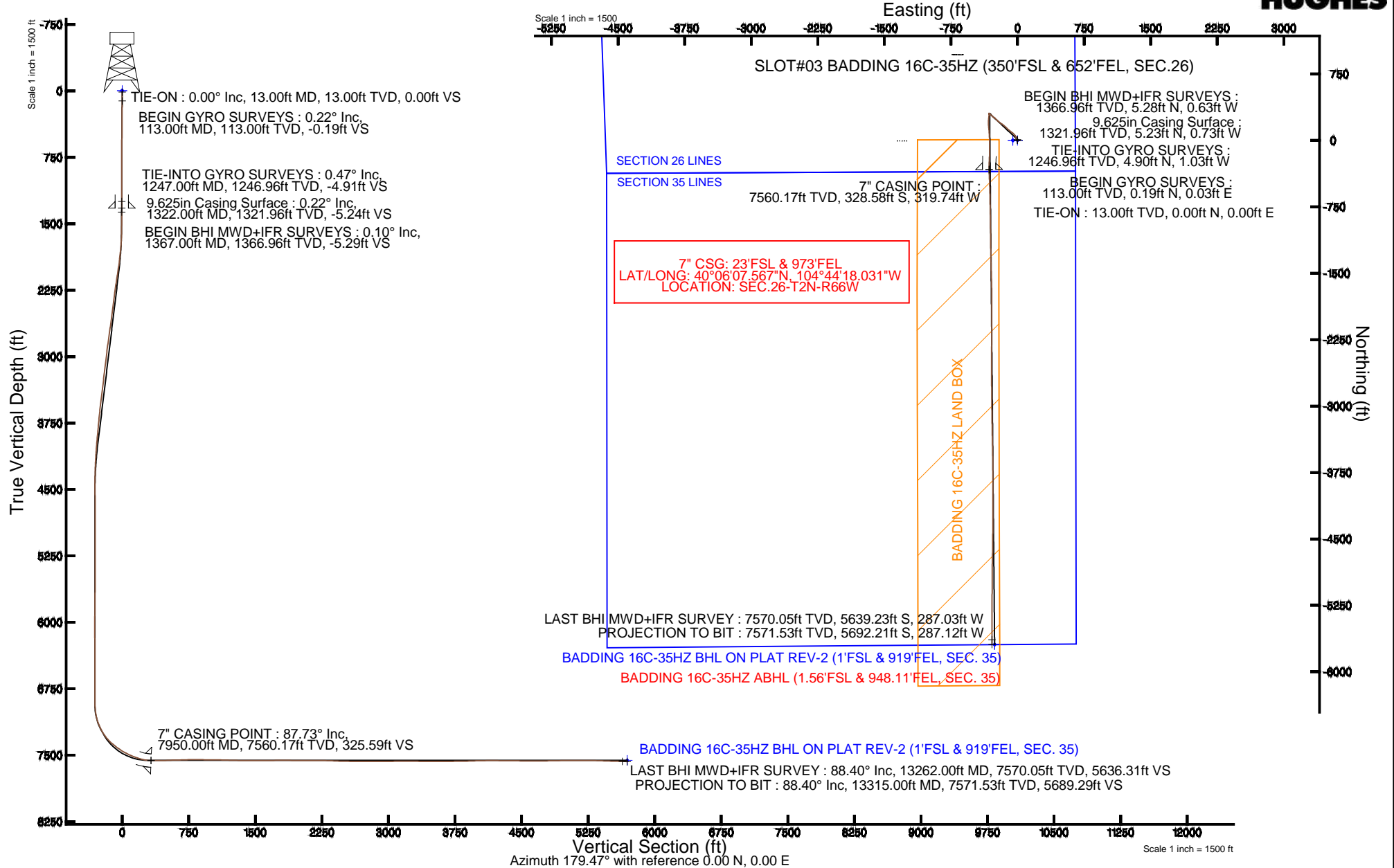


KERR-MCGEE OIL & GAS ONSHORE LP

Location: COLORADO Slot: SLOT#03 BADDING 16C-35HZ (350'FSL & 652'FEL, SEC.26)
 Field: WELD COUNTY (KERR MCGEE) Well: BADDING 16C-35HZ
 Facility: SEC.26-T2N-R66W Wellbore: BADDING 16C-35HZ PWB

Plot reference wellpath is BADDING 16C-35HZ (REV-B.0) PWP

True vertical depths are referenced to ENSIGN 138 (13'KB) (RKB)	Grid System: NAD83 / Lambert Colorado SP, Northern Zone (501), US feet
Measured depths are referenced to ENSIGN 138 (13'KB) (RKB)	North Reference: True north
ENSIGN 138 (13'KB) (RKB) to Mean Sea Level: 5128 feet	Scale: True distance
Mean Sea Level to Mud line (At Slot: SLOT#03 BADDING 16C-35HZ (350'FSL & 652'FEL, SEC.26)): 0 feet	Depths are in feet
Coordinates are in feet referenced to Slot	Created by: wlsjef02 on 4/17/2014





Actual Wellpath Report

BADDING 16C-35HZ AWP

Page 1 of 6



REFERENCE WELLPATH IDENTIFICATION

Operator	KERR-MCGEE OIL & GAS ONSHORE LP	Slot	SLOT#03 BADDING 16C-35HZ (350'FSL & 652'FEL, SEC.26)
Area	COLORADO	Well	BADDING 16C-35HZ
Field	WELD COUNTY (KERR MCGEE)	Wellbore	BADDING 16C-35HZ AWB
Facility	SEC.26-T2N-R66W		

REPORT SETUP INFORMATION

Projection System	NAD83 / Lambert Colorado SP, Northern Zone (501), US feet	Software System	WellArchitect® 4.0.0
North Reference	True	User	Wilsjef02
Scale	0.99996	Report Generated	4/17/2014 at 11:56:34 AM
Convergence at slot	n/a	Database/Source file	WellArchitectDB/BADDING_16C-35HZ_AWB.xml

WELLPATH LOCATION

	Local coordinates		Grid coordinates		Geographic coordinates	
	North[ft]	East[ft]	Easting[US ft]	Northing[US ft]	Latitude	Longitude
Slot Location	0.30	52.14	3213376.07	1281286.42	40°06'10.814"N	104°44'13.916"W
Facility Reference Pt			3213323.93	1281285.67	40°06'10.811"N	104°44'14.587"W
Field Reference Pt			3197771.84	1268891.29	40°04'09.600"N	104°47'36.000"W

WELLPATH DATUM

Calculation method	Minimum curvature	ENSIGN 138 (13'KB) (RKB) to Facility Vertical Datum	5128.00ft
Horizontal Reference Pt	Slot	ENSIGN 138 (13'KB) (RKB) to Mean Sea Level	5128.00ft
Vertical Reference Pt	ENSIGN 138 (13'KB) (RKB)	ENSIGN 138 (13'KB) (RKB) to Mud Line at Slot (SLOT#03 BADDING 16C-35HZ (350'FSL & 652'FEL, SEC.26))	5128.00ft
MD Reference Pt	ENSIGN 138 (13'KB) (RKB)	Section Origin	N 0.00, E 0.00 ft
Field Vertical Reference	Mean Sea Level	Section Azimuth	179.47°

Actual Wellpath Report

BADDING 16C-35HZ AWP

Page 2 of 6

REFERENCE WELLPATH IDENTIFICATION			
Operator	KERR-MCGEE OIL & GAS ONSHORE LP	Slot	SLOT#03 BADDING 16C-35HZ (350'FSL & 652'FEL, SEC.26)
Area	COLORADO	Well	BADDING 16C-35HZ
Field	WELD COUNTY (KERR MCGEE)	Wellbore	BADDING 16C-35HZ AWB
Facility	SEC.26-T2N-R66W		

WELLPATH DATA (125 stations) † = interpolated/extrapolated station										
MD [ft]	Inclination [°]	Azimuth [°]	TVD [ft]	Vert Sect [ft]	North [ft]	East [ft]	Latitude	Longitude	DLS [°/100ft]	Comments
0.00†	0.000	7.770	0.00	0.00	0.00	0.00	40°06'10.814"N	104°44'13.916"W	0.00	
13.00	0.000	7.770	13.00	0.00	0.00	0.00	40°06'10.814"N	104°44'13.916"W	0.00	TIE-ON
113.00	0.220	7.770	113.00	-0.19	0.19	0.03	40°06'10.816"N	104°44'13.916"W	0.22	BEGIN GYRO SURVEYS
213.00	0.450	355.760	213.00	-0.77	0.77	0.02	40°06'10.822"N	104°44'13.916"W	0.24	
313.00	0.820	307.350	312.99	-1.60	1.60	-0.57	40°06'10.830"N	104°44'13.923"W	0.62	
413.00	0.790	292.600	412.98	-2.31	2.30	-1.78	40°06'10.837"N	104°44'13.939"W	0.21	
513.00	0.360	31.360	512.98	-2.85	2.83	-2.25	40°06'10.842"N	104°44'13.945"W	0.92	
613.00	0.520	356.990	612.98	-3.57	3.55	-2.11	40°06'10.849"N	104°44'13.943"W	0.30	
713.00	0.600	334.300	712.97	-4.50	4.48	-2.36	40°06'10.858"N	104°44'13.946"W	0.23	
813.00	0.240	238.680	812.97	-4.86	4.84	-2.77	40°06'10.862"N	104°44'13.952"W	0.67	
913.00	0.290	176.630	912.97	-4.51	4.48	-2.93	40°06'10.858"N	104°44'13.954"W	0.28	
1013.00	0.400	101.610	1012.97	-4.18	4.15	-2.58	40°06'10.855"N	104°44'13.949"W	0.43	
1113.00	0.470	66.590	1112.96	-4.26	4.25	-1.86	40°06'10.856"N	104°44'13.940"W	0.27	
1213.00	0.450	43.990	1212.96	-4.70	4.69	-1.21	40°06'10.860"N	104°44'13.932"W	0.18	
1247.00	0.470	37.510	1246.96	-4.91	4.90	-1.03	40°06'10.862"N	104°44'13.929"W	0.16	TIE-INTO GYRO SURVEYS
1367.00	0.100	94.400	1366.96	-5.29	5.28	-0.63	40°06'10.866"N	104°44'13.924"W	0.35	BEGIN BHI MWD+IFR SURVEYS
1462.00	0.100	314.900	1461.96	-5.34	5.33	-0.60	40°06'10.867"N	104°44'13.924"W	0.20	
1554.00	1.100	307.100	1553.95	-5.94	5.92	-1.37	40°06'10.873"N	104°44'13.934"W	1.09	
1645.00	2.300	313.500	1644.91	-7.74	7.71	-3.39	40°06'10.890"N	104°44'13.960"W	1.33	
1737.00	4.800	335.400	1736.73	-12.54	12.48	-6.33	40°06'10.937"N	104°44'13.997"W	3.04	
1828.00	6.600	336.900	1827.28	-20.84	20.75	-9.97	40°06'11.019"N	104°44'14.044"W	1.98	
1920.00	7.800	331.700	1918.55	-31.25	31.11	-15.00	40°06'11.121"N	104°44'14.109"W	1.48	
2011.00	9.400	332.900	2008.52	-43.36	43.17	-21.31	40°06'11.241"N	104°44'14.190"W	1.77	
2103.00	10.700	326.300	2099.11	-57.23	56.96	-29.48	40°06'11.377"N	104°44'14.295"W	1.89	
2195.00	10.900	316.900	2189.49	-70.79	70.42	-40.16	40°06'11.510"N	104°44'14.433"W	1.92	
2285.00	12.100	308.400	2277.69	-82.99	82.49	-53.37	40°06'11.629"N	104°44'14.603"W	2.30	
2468.00	11.200	308.700	2456.92	-106.28	105.52	-82.27	40°06'11.857"N	104°44'14.975"W	0.49	
2650.00	11.700	311.300	2635.30	-129.77	128.75	-109.93	40°06'12.086"N	104°44'15.331"W	0.39	
2833.00	11.200	315.000	2814.66	-154.83	153.56	-136.43	40°06'12.332"N	104°44'15.672"W	0.49	
3016.00	11.100	304.500	2994.22	-177.63	176.11	-163.52	40°06'12.554"N	104°44'16.020"W	1.11	
3199.00	11.500	306.900	3173.67	-198.83	197.04	-192.63	40°06'12.761"N	104°44'16.395"W	0.34	
3387.00	11.100	308.700	3358.03	-221.67	219.61	-221.74	40°06'12.984"N	104°44'16.770"W	0.28	
3577.00	9.000	317.300	3545.11	-244.25	241.97	-246.09	40°06'13.205"N	104°44'17.083"W	1.36	
3671.00	9.400	306.900	3637.91	-254.37	251.98	-257.22	40°06'13.304"N	104°44'17.226"W	1.82	
3860.00	8.100	307.500	3824.71	-271.96	269.36	-280.13	40°06'13.476"N	104°44'17.521"W	0.69	
3954.00	7.700	316.600	3917.82	-280.65	277.96	-289.71	40°06'13.561"N	104°44'17.644"W	1.40	
4049.00	7.500	304.500	4011.99	-288.88	286.10	-299.19	40°06'13.641"N	104°44'17.766"W	1.69	
4144.00	5.800	307.000	4106.35	-295.36	292.50	-308.13	40°06'13.705"N	104°44'17.881"W	1.81	
4239.00	4.000	311.800	4201.00	-300.52	297.60	-314.44	40°06'13.755"N	104°44'17.963"W	1.94	
4333.00	2.300	304.900	4294.85	-303.82	300.86	-318.43	40°06'13.787"N	104°44'18.014"W	1.85	
4429.00	1.300	343.200	4390.81	-305.98	303.01	-320.33	40°06'13.808"N	104°44'18.038"W	1.58	
4522.00	1.100	214.000	4483.80	-306.26	303.28	-321.13	40°06'13.811"N	104°44'18.049"W	2.33	
4617.00	0.600	204.500	4578.79	-305.06	302.07	-321.85	40°06'13.799"N	104°44'18.058"W	0.55	
4807.00	0.200	181.600	4768.78	-303.82	300.83	-322.27	40°06'13.787"N	104°44'18.063"W	0.22	
4995.00	0.700	325.300	4956.78	-304.45	301.45	-322.93	40°06'13.793"N	104°44'18.072"W	0.46	



Actual Wellpath Report

BADDING 16C-35HZ AWP

Page 3 of 6



REFERENCE WELLPATH IDENTIFICATION			
Operator	KERR-MCGEE OIL & GAS ONSHORE LP	Slot	SLOT#03 BADDING 16C-35HZ (350'FSL & 652'FEL, SEC.26)
Area	COLORADO	Well	BADDING 16C-35HZ
Field	WELD COUNTY (KERR MCGEE)	Wellbore	BADDING 16C-35HZ AWB
Facility	SEC.26-T2N-R66W		

WELLPATH DATA (125 stations) † = interpolated/extrapolated station										
MD [ft]	Inclination [°]	Azimuth [°]	TVD [ft]	Vert Sect [ft]	North [ft]	East [ft]	Latitude	Longitude	DLS [°/100ft]	Comments
5089.00	0.700	216.400	5050.77	-304.46	301.46	-323.60	40°06'13.793"N	104°44'18.080"W	1.21	
5184.00	0.800	166.000	5145.77	-303.35	300.35	-323.78	40°06'13.782"N	104°44'18.083"W	0.68	
5279.00	0.800	88.000	5240.76	-302.72	299.73	-322.96	40°06'13.776"N	104°44'18.072"W	1.06	
5657.00	0.600	337.200	5618.74	-304.62	301.64	-321.09	40°06'13.795"N	104°44'18.048"W	0.31	
6037.00	1.400	62.800	5998.70	-308.55	305.60	-317.73	40°06'13.834"N	104°44'18.005"W	0.39	
6131.00	1.000	228.500	6092.69	-308.53	305.58	-317.32	40°06'13.834"N	104°44'18.000"W	2.53	
6227.00	0.500	186.700	6188.68	-307.56	304.61	-318.00	40°06'13.824"N	104°44'18.008"W	0.74	
6608.00	0.600	64.200	6569.67	-306.76	303.83	-316.40	40°06'13.816"N	104°44'17.988"W	0.25	
6929.00	0.600	233.600	6890.67	-306.50	303.56	-316.24	40°06'13.814"N	104°44'17.986"W	0.37	
6987.00	2.100	205.300	6948.65	-305.36	302.42	-316.94	40°06'13.803"N	104°44'17.995"W	2.75	
7034.00	6.300	190.500	6995.52	-302.05	299.11	-317.77	40°06'13.770"N	104°44'18.005"W	9.16	
7082.00	10.800	188.800	7042.97	-295.03	292.07	-318.94	40°06'13.700"N	104°44'18.021"W	9.39	
7176.00	19.800	187.200	7133.55	-270.51	267.52	-322.29	40°06'13.458"N	104°44'18.064"W	9.58	
7271.00	28.700	186.300	7220.08	-231.84	228.81	-326.82	40°06'13.075"N	104°44'18.122"W	9.38	
7366.00	38.200	175.000	7299.33	-179.74	176.70	-326.76	40°06'12.560"N	104°44'18.121"W	11.92	
7460.00	49.000	174.900	7367.30	-115.21	112.22	-321.06	40°06'11.923"N	104°44'18.048"W	11.49	
7555.00	55.300	177.700	7425.57	-40.36	37.41	-316.30	40°06'11.184"N	104°44'17.986"W	7.03	
7649.00	62.000	179.700	7474.45	39.86	-42.79	-314.53	40°06'10.391"N	104°44'17.964"W	7.36	
7744.00	68.100	180.900	7514.50	125.94	-128.88	-315.00	40°06'09.540"N	104°44'17.970"W	6.52	
7839.00	75.400	182.500	7544.24	216.03	-219.00	-317.71	40°06'08.650"N	104°44'18.005"W	7.85	
7886.00	80.700	182.100	7553.96	261.94	-264.93	-319.55	40°06'08.196"N	104°44'18.028"W	11.31	
7913.00	84.100	179.900	7557.54	288.69	-291.68	-320.01	40°06'07.932"N	104°44'18.034"W	14.96	
7950.00†	87.727	179.246	7560.17	325.59	-328.58	-319.74	40°06'07.567"N	104°44'18.031"W	9.96	7" CASING POINT
7964.00	89.100	179.000	7560.56	339.58	-342.57	-319.52	40°06'07.429"N	104°44'18.028"W	9.96	
8057.00	90.800	177.600	7560.64	432.55	-435.53	-316.76	40°06'06.510"N	104°44'17.992"W	2.37	
8152.00	92.600	178.200	7557.82	527.47	-530.42	-313.29	40°06'05.572"N	104°44'17.948"W	2.00	
8247.00	91.300	178.700	7554.59	622.40	-625.32	-310.72	40°06'04.634"N	104°44'17.915"W	1.47	
8342.00	91.900	179.100	7551.94	717.36	-720.27	-308.89	40°06'03.696"N	104°44'17.891"W	0.76	
8436.00	90.300	178.600	7550.13	811.33	-814.23	-307.01	40°06'02.768"N	104°44'17.867"W	1.78	
8533.00	88.500	179.000	7551.15	908.32	-911.20	-304.98	40°06'01.809"N	104°44'17.841"W	1.90	
8628.00	90.000	179.500	7552.39	1003.30	-1006.18	-303.73	40°06'00.871"N	104°44'17.825"W	1.66	
8723.00	88.900	179.400	7553.30	1098.30	-1101.17	-302.82	40°05'59.932"N	104°44'17.813"W	1.16	
8817.00	87.600	179.200	7556.17	1192.25	-1195.12	-301.67	40°05'59.004"N	104°44'17.798"W	1.40	
8911.00	89.100	179.400	7558.88	1286.21	-1289.07	-300.53	40°05'58.075"N	104°44'17.783"W	1.61	
9006.00	89.100	178.400	7560.37	1381.19	-1384.04	-298.70	40°05'57.137"N	104°44'17.760"W	1.05	
9101.00	90.000	178.500	7561.12	1476.17	-1479.00	-296.13	40°05'56.198"N	104°44'17.727"W	0.95	
9197.00	90.700	178.200	7560.53	1572.15	-1574.96	-293.37	40°05'55.250"N	104°44'17.691"W	0.79	
9291.00	90.600	179.200	7559.47	1666.14	-1668.92	-291.24	40°05'54.321"N	104°44'17.664"W	1.07	
9385.00	90.700	179.900	7558.40	1760.13	-1762.91	-290.50	40°05'53.393"N	104°44'17.654"W	0.75	
9481.00	89.300	180.200	7558.40	1856.12	-1858.91	-290.58	40°05'52.444"N	104°44'17.655"W	1.49	
9575.00	89.300	180.400	7559.55	1950.11	-1952.90	-291.07	40°05'51.515"N	104°44'17.662"W	0.21	
9670.00	89.700	179.700	7560.38	2045.10	-2047.90	-291.16	40°05'50.576"N	104°44'17.663"W	0.85	
9765.00	90.100	179.500	7560.54	2140.10	-2142.90	-290.49	40°05'49.638"N	104°44'17.654"W	0.47	
9859.00	89.700	180.300	7560.71	2234.09	-2236.90	-290.33	40°05'48.709"N	104°44'17.652"W	0.95	
9954.00	88.200	181.200	7562.45	2329.05	-2331.87	-291.57	40°05'47.770"N	104°44'17.668"W	1.84	

Actual Wellpath Report

BADDING 16C-35HZ AWP

Page 4 of 6

REFERENCE WELLPATH IDENTIFICATION

Operator	KERR-MCGEE OIL & GAS ONSHORE LP	Slot	SLOT#03 BADDING 16C-35HZ (350'FSL & 652'FEL, SEC.26)
Area	COLORADO	Well	BADDING 16C-35HZ
Field	WELD COUNTY (KERR MCGEE)	Wellbore	BADDING 16C-35HZ AWB
Facility	SEC.26-T2N-R66W		

WELLPATH DATA (125 stations)

MD [ft]	Inclination [°]	Azimuth [°]	TVD [ft]	Vert Sect [ft]	North [ft]	East [ft]	Latitude	Longitude	DLS [°/100ft]	Comments
10048.00	87.600	180.300	7565.89	2422.96	-2425.80	-292.80	40°05'46.842"N	104°44'17.684"W	1.15	
10142.00	89.300	179.900	7568.44	2516.92	-2519.76	-292.97	40°05'45.913"N	104°44'17.686"W	1.86	
10236.00	89.600	179.800	7569.34	2610.91	-2613.75	-292.72	40°05'44.984"N	104°44'17.683"W	0.34	
10331.00	89.800	179.400	7569.83	2705.91	-2708.75	-292.06	40°05'44.046"N	104°44'17.674"W	0.47	
10425.00	90.600	179.500	7569.51	2799.91	-2802.74	-291.15	40°05'43.117"N	104°44'17.662"W	0.86	
10519.00	89.600	179.500	7569.34	2893.91	-2896.74	-290.33	40°05'42.188"N	104°44'17.652"W	1.06	
10709.00	90.900	179.100	7568.51	3083.90	-3086.72	-288.01	40°05'40.311"N	104°44'17.622"W	0.72	
10804.00	89.300	179.000	7568.35	3178.89	-3181.70	-286.44	40°05'39.372"N	104°44'17.602"W	1.69	
10898.00	90.300	179.200	7568.68	3272.89	-3275.69	-284.96	40°05'38.443"N	104°44'17.583"W	1.08	
10993.00	89.000	178.500	7569.26	3367.88	-3370.66	-283.05	40°05'37.505"N	104°44'17.558"W	1.55	
11088.00	89.700	178.900	7570.33	3462.86	-3465.63	-280.90	40°05'36.566"N	104°44'17.530"W	0.85	
11181.00	89.800	178.600	7570.74	3555.86	-3558.61	-278.87	40°05'35.647"N	104°44'17.504"W	0.34	
11276.00	91.000	180.000	7570.08	3650.85	-3653.60	-277.71	40°05'34.709"N	104°44'17.489"W	1.94	
11371.00	90.600	179.600	7568.75	3745.84	-3748.59	-277.38	40°05'33.770"N	104°44'17.485"W	0.60	
11466.00	90.700	179.600	7567.67	3840.83	-3843.58	-276.72	40°05'32.831"N	104°44'17.477"W	0.11	
11560.00	92.200	180.000	7565.29	3934.80	-3937.54	-276.39	40°05'31.903"N	104°44'17.472"W	1.65	
11655.00	91.200	180.400	7562.48	4029.75	-4032.50	-276.72	40°05'30.964"N	104°44'17.477"W	1.13	
11748.00	90.300	180.800	7561.26	4122.72	-4125.49	-277.69	40°05'30.045"N	104°44'17.489"W	1.06	
11844.00	89.600	180.100	7561.34	4218.70	-4221.48	-278.45	40°05'29.097"N	104°44'17.499"W	1.03	
11939.00	89.100	179.700	7562.42	4313.69	-4316.47	-278.28	40°05'28.158"N	104°44'17.497"W	0.67	
12033.00	89.800	180.500	7563.32	4407.68	-4410.47	-278.45	40°05'27.229"N	104°44'17.499"W	1.13	
12128.00	89.200	180.700	7564.15	4502.66	-4505.46	-279.44	40°05'26.290"N	104°44'17.511"W	0.67	
12222.00	89.800	180.600	7564.97	4596.64	-4599.45	-280.51	40°05'25.362"N	104°44'17.525"W	0.65	
12317.00	89.900	181.300	7565.22	4691.60	-4694.44	-282.08	40°05'24.423"N	104°44'17.545"W	0.74	
12411.00	91.200	180.800	7564.32	4785.56	-4788.41	-283.80	40°05'23.494"N	104°44'17.568"W	1.48	
12507.00	91.200	180.500	7562.31	4881.52	-4884.39	-284.89	40°05'22.546"N	104°44'17.582"W	0.31	
12601.00	90.000	180.200	7561.32	4975.50	-4978.38	-285.47	40°05'21.617"N	104°44'17.589"W	1.32	
12696.00	90.100	180.400	7561.24	5070.49	-5073.38	-285.96	40°05'20.678"N	104°44'17.595"W	0.24	
12790.00	90.300	180.800	7560.91	5164.47	-5167.37	-286.95	40°05'19.749"N	104°44'17.608"W	0.48	
12885.00	90.000	180.400	7560.66	5259.45	-5262.36	-287.94	40°05'18.810"N	104°44'17.621"W	0.53	
12979.00	88.300	179.300	7562.06	5353.43	-5356.35	-287.70	40°05'17.882"N	104°44'17.618"W	2.15	
13074.00	88.200	179.700	7564.96	5448.39	-5451.30	-286.87	40°05'16.943"N	104°44'17.607"W	0.43	
13169.00	88.600	180.200	7567.61	5543.35	-5546.26	-286.79	40°05'16.005"N	104°44'17.606"W	0.67	
13262.00	88.400	180.100	7570.05	5636.31	-5639.23	-287.03	40°05'15.086"N	104°44'17.609"W	0.24	LAST BHI MWD+IFR SURVEY
13315.00	88.400	180.100	7571.53	5689.29	-5692.21	-287.12	40°05'14.563"N	104°44'17.610"W	0.00	PROJECTION TO BIT



Actual Wellpath Report

BADDING 16C-35HZ AWP

Page 5 of 6



REFERENCE WELLPATH IDENTIFICATION			
Operator	KERR-MCGEE OIL & GAS ONSHORE LP	Slot	SLOT#03 BADDING 16C-35HZ (350'FSL & 652'FEL, SEC.26)
Area	COLORADO	Well	BADDING 16C-35HZ
Field	WELD COUNTY (KERR MCGEE)	Wellbore	BADDING 16C-35HZ AWB
Facility	SEC.26-T2N-R66W		

HOLE & CASING SECTIONS - Ref Wellbore: BADDING 16C-35HZ AWB Ref Wellpath: BADDING 16C-35HZ AWP									
String/Diameter	Start MD [ft]	End MD [ft]	Interval [ft]	Start TVD [ft]	End TVD [ft]	Start N/S [ft]	Start E/W [ft]	End N/S [ft]	End E/W [ft]
13.5in Open Hole	13.00	1322.00	1309.00	13.00	1321.96	0.00	0.00	5.23	-0.73
9.625in Casing Surface	13.00	1322.00	1309.00	13.00	1321.96	0.00	0.00	5.23	-0.73
8.75in Open Hole	1322.00	7960.00	6638.00	1321.96	7560.48	5.23	-0.73	-338.57	-319.59
7in Casing Intermediate	13.00	7950.00	7937.00	13.00	7560.17	0.00	0.00	-328.58	-319.74
6.125in Open Hole	7950.00	13315.00	5365.00	7560.17	7571.53	-328.58	-319.74	-5692.21	-287.12

TARGETS									
Name	MD [ft]	TVD [ft]	North [ft]	East [ft]	Grid East [US ft]	Grid North [US ft]	Latitude	Longitude	Shape
BADDING SECTION 26 LINES		-4.00	-0.30	-52.06	3213324.01	1281285.67	40°06'10.811"N	104°44'14.586"W	polygon
BADDING SECTION 35 LINES		-4.00	-0.30	-52.06	3213324.01	1281285.67	40°06'10.811"N	104°44'14.586"W	polygon
BADDING 16C-35HZ BHL ON PLAT REV-1 (1'FSL & 919'FEL, SEC. 35)		7553.00	-5692.76	-258.01	3213167.05	1275591.89	40°05'14.557"N	104°44'17.236"W	point
BADDING 16C-35HZ BHL ON PLAT REV-2 (1'FSL & 919'FEL, SEC. 35)		7558.00	-5692.77	-258.01	3213167.05	1275591.89	40°05'14.557"N	104°44'17.236"W	point
BADDING 16C-35HZ LAND BOX		7596.00	0.00	0.00	3213376.07	1281286.42	40°06'10.814"N	104°44'13.916"W	polygon

WELLPATH COMPOSITION - Ref Wellbore: BADDING 16C-35HZ AWB Ref Wellpath: BADDING 16C-35HZ AWP				
Start MD [ft]	End MD [ft]	Positional Uncertainty Model	Log Name/Comment	Wellbore
13.00	1247.00	Generic gyro - continuous (Standard)	MS ENERGY SERVICES GYRO SURVEYS <113-1247>	BADDING 16C-35HZ AWB
1247.00	7913.00	NaviTrak (MAGCORR,IFR)	BHI MWD+IFR SURVEYS 8 3/4" HOLE <1367-7913>	BADDING 16C-35HZ AWB
7913.00	13262.00	NaviTrak (MAGCORR,IFR)	BHI MWD+IFR SURVEYS 6 1/8" HOLE <7964-13262>	BADDING 16C-35HZ AWB
13262.00	13315.00	Blind Drilling (std)	Projection to bit	BADDING 16C-35HZ AWB



Actual Wellpath Report

BADDING 16C-35HZ AWP

Page 6 of 6



REFERENCE WELLPATH IDENTIFICATION

Operator	KERR-MCGEE OIL & GAS ONSHORE LP	Slot	SLOT#03 BADDING 16C-35HZ (350'FSL & 652'FEL, SEC.26)
Area	COLORADO	Well	BADDING 16C-35HZ
Field	WELD COUNTY (KERR MCGEE)	Wellbore	BADDING 16C-35HZ AWB
Facility	SEC.26-T2N-R66W		

WELLPATH COMMENTS

MD [ft]	Inclination [°]	Azimuth [°]	TVD [ft]	Comment
13.00	0.000	7.770	13.00	TIE-ON
113.00	0.220	7.770	113.00	BEGIN GYRO SURVEYS
1247.00	0.470	37.510	1246.96	TIE-INTO GYRO SURVEYS
1367.00	0.100	94.400	1366.96	BEGIN BHI MWD+IFR SURVEYS
7950.00	87.727	179.246	7560.17	7" CASING POINT
13262.00	88.400	180.100	7570.05	LAST BHI MWD+IFR SURVEY
13315.00	88.400	180.100	7571.53	PROJECTION TO BIT