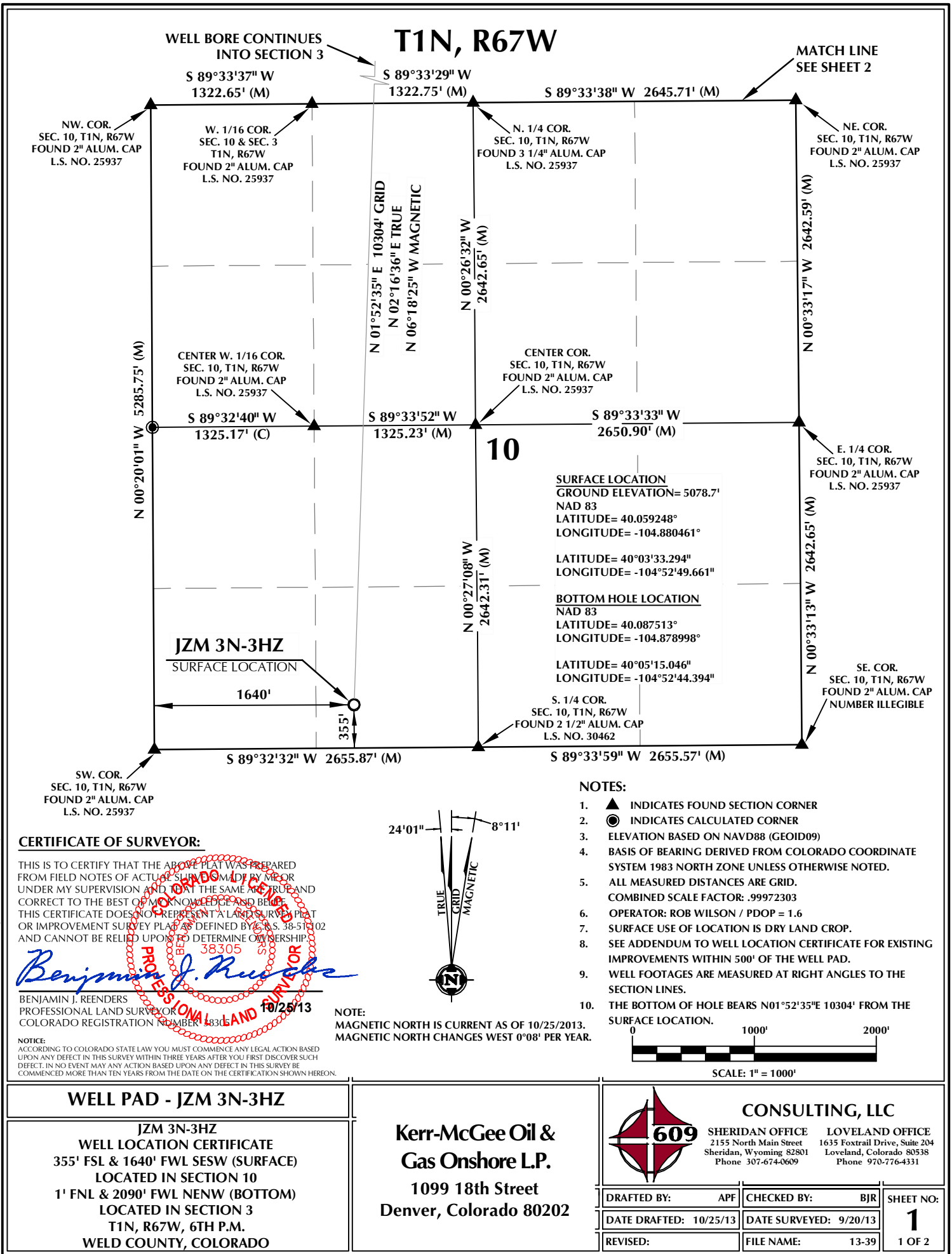


K:\AMDARCO\2013\2013_39_WATTENBERG_T1_R67_SEC_10\PLATS\JZM_3N-3HZ\PLAT.dwg, 10/26/2013 1:46:21 PM, and



NW. COR.
SEC. 3, T1N, R67W
FOUND 2" ALUM. CAP
L.S. NO. 25937

T1N, R67W

NE. COR.
SEC. 3, T1N, R67W
FOUND 2 1/2" ALUM. CAP
L.S. NO. 24657

S 89°40'03" W 2625.30' (M)

N. 1/4 COR.
SEC. 3, T1N, R67W
FOUND 3 1/4" ALUM. CAP
L.S. NO. 13258

2090'
777'
535'
BOTTOM OF HOLE:
1' FNL & 2090' FWL

SURFACE LOCATION
GROUND ELEVATION= 5078.7'
NAD 83
LATITUDE= 40.059248°
LONGITUDE= -104.880461°

LATITUDE= 40°03'33.294"
LONGITUDE= -104°52'49.661"

BOTTOM HOLE LOCATION
NAD 83
LATITUDE= 40.087513°
LONGITUDE= -104.878998°

LATITUDE= 40°05'15.046"
LONGITUDE= -104°52'44.394"

CENTER COR.
SEC. 3, T1N, R67W
FOUND REBAR

S 89°33'50" W
2652.77' (M)

3

E. 1/4 COR.
SEC. 3, T1N, R67W
FOUND 2" ALUM. CAP
L.S. NO. 25937

W. 1/4 COR.
SEC. 3, T1N, R67W
FOUND 2" ALUM. CAP
L.S. NO. 25937

S 89°34'08" W
2628.46' (M)

N 01°02'36" W 2730.29' (M)

N 00°45'23" W 2640.30' (M)

W. 1/16 COR.
SEC. 3 & SEC. 10
T1N, R67W
FOUND 2" ALUM. CAP
L.S. NO. 25937

N 01°52'35" E 10304' GRID
N 02°16'36" E TRUE
N 06°18'25" W MAGNETIC

N 01°07'27" W
2640.01' (M)

S. 1/4 COR.
SEC. 3, T1N, R67W
FOUND 3 1/4" ALUM. CAP
L.S. NO. 25937

SW. COR.
SEC. 3, T1N, R67W
FOUND 2" ALUM. CAP
L.S. NO. 25937

S 89°33'37" W
1322.65' (M)

S 89°33'29" W
1322.75' (M)

S 89°33'38" W 2645.71' (M)

SE. COR.
SEC. 3, T1N, R67W
FOUND 2" ALUM. CAP
L.S. NO. 25937

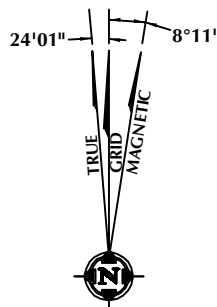
MATCH LINE
SEE SHEET 1

CERTIFICATE OF SURVEYOR:

THIS IS TO CERTIFY THAT THE ABOVE PLAT WAS PREPARED FROM FIELD NOTES OF ACTUAL SURVEY MADE BY ME OR UNDER MY SUPERVISION AND THAT THE SAME ARE TRUE AND CORRECT TO THE BEST OF MY KNOWLEDGE AND BELIEF. THIS CERTIFICATE DOES NOT REPRESENT A LAND SURVEY PLAT OR IMPROVEMENT SURVEY PLAT AS DEFINED BY C.S. 38-51-102 AND CANNOT BE RELIED UPON TO DETERMINE OWNERSHIP.

Benjamin J. Reenders
BENJAMIN J. REENDERS
PROFESSIONAL LAND SURVEYOR
COLORADO REGISTRATION NUMBER 48305
10/25/13

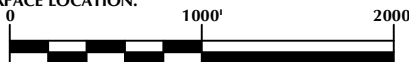
NOTICE:
ACCORDING TO COLORADO STATE LAW YOU MUST COMMENCE ANY LEGAL ACTION BASED UPON ANY DEFECT IN THIS SURVEY WITHIN THREE YEARS AFTER YOU FIRST DISCOVER SUCH DEFECT. IN NO EVENT MAY ANY ACTION BASED UPON ANY DEFECT IN THIS SURVEY BE COMMENCED MORE THAN TEN YEARS FROM THE DATE ON THE CERTIFICATION SHOWN HEREON.



NOTE:
MAGNETIC NORTH IS CURRENT AS OF 10/25/2013.
MAGNETIC NORTH CHANGES WEST 0°08' PER YEAR.

NOTES:

- ▲ INDICATES FOUND SECTION CORNER
- INDICATES CALCULATED CORNER
- ELEVATION BASED ON NAVD88 (GEOID09)
- BASIS OF BEARING DERIVED FROM COLORADO COORDINATE SYSTEM 1983 NORTH ZONE UNLESS OTHERWISE NOTED.
- ALL MEASURED DISTANCES ARE GRID.
COMBINED SCALE FACTOR: .99972303
- OPERATOR: ROB WILSON / PDOP = 1.6
- SURFACE USE OF LOCATION IS DRY LAND CROP.
- SEE ADDENDUM TO WELL LOCATION CERTIFICATE FOR EXISTING IMPROVEMENTS WITHIN 500' OF THE WELL PAD.
- WELL FOOTAGES ARE MEASURED AT RIGHT ANGLES TO THE SECTION LINES.
- THE BOTTOM OF HOLE BEARS N01°52'35"E 10304' FROM THE SURFACE LOCATION.



SCALE: 1" = 1000'

WELL PAD - JZM 3N-3HZ

JZM 3N-3HZ
WELL LOCATION CERTIFICATE
355' FSL & 1640' FWL SESW (SURFACE)
LOCATED IN SECTION 10
1' FNL & 2090' FWL NENW (BOTTOM)
LOCATED IN SECTION 3
T1N, R67W, 6TH P.M.
WELD COUNTY, COLORADO

**Kerr-McGee Oil &
Gas Onshore L.P.**
1099 18th Street
Denver, Colorado 80202



CONSULTING, LLC

SHERIDAN OFFICE
2155 North Main Street
Sheridan, Wyoming 82801
Phone 307-674-0609

LOVELAND OFFICE
1635 Foxtrail Drive, Suite 204
Loveland, Colorado 80538
Phone 970-776-4331

DRAFTED BY:	APF	CHECKED BY:	BJR	SHEET NO:
DATE DRAFTED:	10/25/13	DATE SURVEYED:	9/20/13	2
REVISED:		FILE NAME:	13-39	2 OF 2