

Doener Leasehold Lands

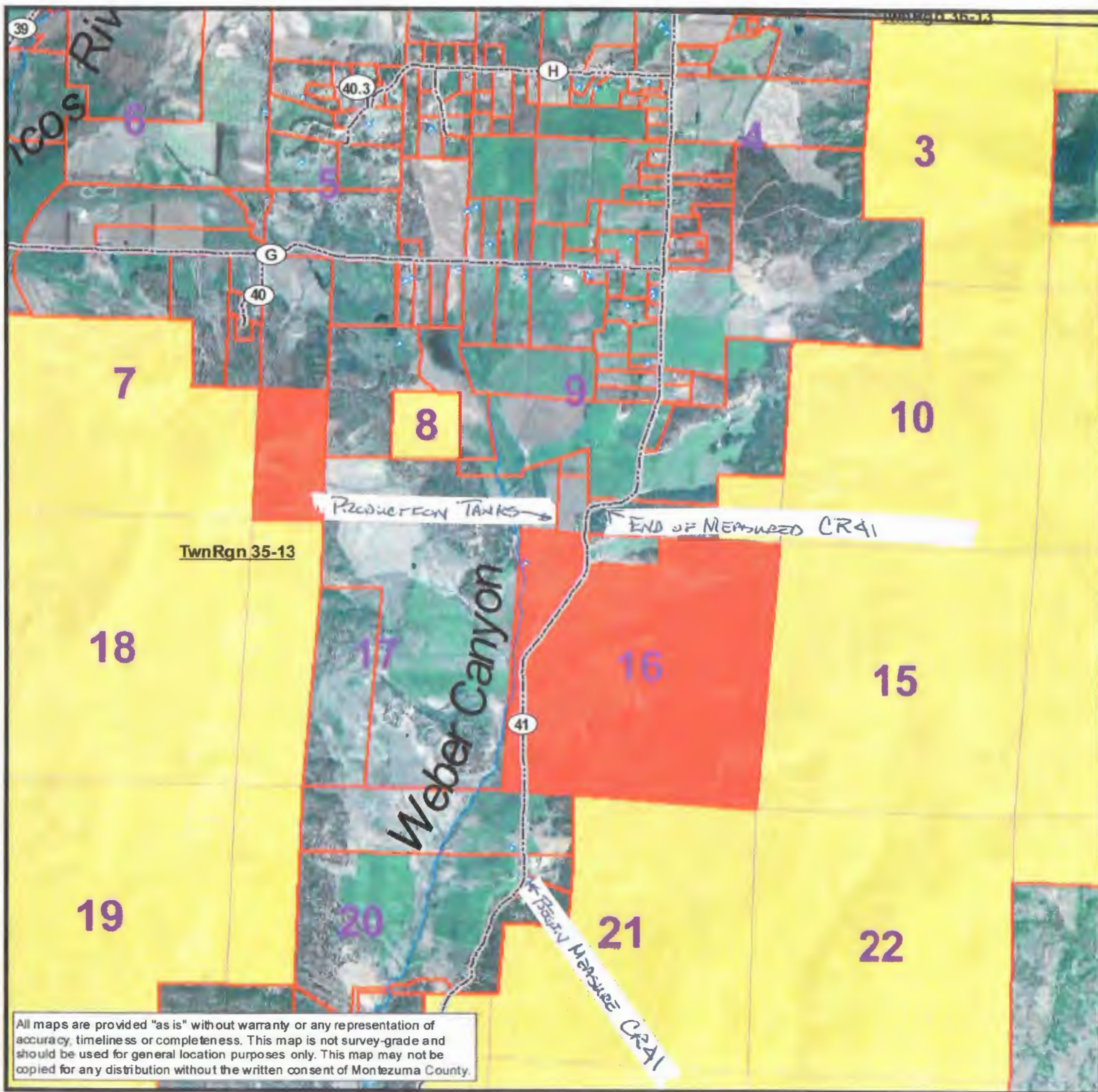


- Legend
- PLSS Township
 - PLSS Sections
 - Highway_Milemarkers
 - Highways
 - County
 - Cities
 - Wells
 - Streams & Rivers
 - Lakes
 - Parcels
 - BIA
 - BLM
 - CO State
 - NPS
 - USFS

- Subject Property
- Adjacent Properties

Produced by the Montezuma County Assessors Office and Computer Services Department. This map is a physical description of information contained in the Montezuma County Assessor and Computer Services Departments. It is not to survey standards and should be used for general reference purposes only. Data contained in this map is based on the best data available at the time of printing.

1 inch = 2,725 feet
2,700 Feet



All maps are provided "as is" without warranty or any representation of accuracy, timeliness or completeness. This map is not survey-grade and should be used for general location purposes only. This map may not be copied for any distribution without the written consent of Montezuma County.



CR 41 - STARTING POINT
LOOKING SOUTH



CR 41 - Starting Point
Looking North



CR 41 - 110th Mile from Seward
Point Looking North



CR 41 - 2/10TH Mile From Smaetey
Point Looking North



— CTR 41 - 3/10/11 Mile from Staerling
Point Looking North



CR 41 410TH Mile From SADDERS
Point Looking North

CR 41 - 5/10th Mile from Sparrows
Point Looking North





CR 41 - 6/10/14 Mile from Smaring
Point Looking North



CIR 21 7/10TH MILE FROM STARTING
POINT Looking North

CR 41 810TH BLUE FEW STAIRING
POINT LOOKING NORTH





CR 41 9/10th Mile From Saverio
Forest Looking North



CIR 41 | MILE FROM STANLEY
POINT
Looking North

CR 41 110th Mile From Starvation
Point Looking North



TANK'S

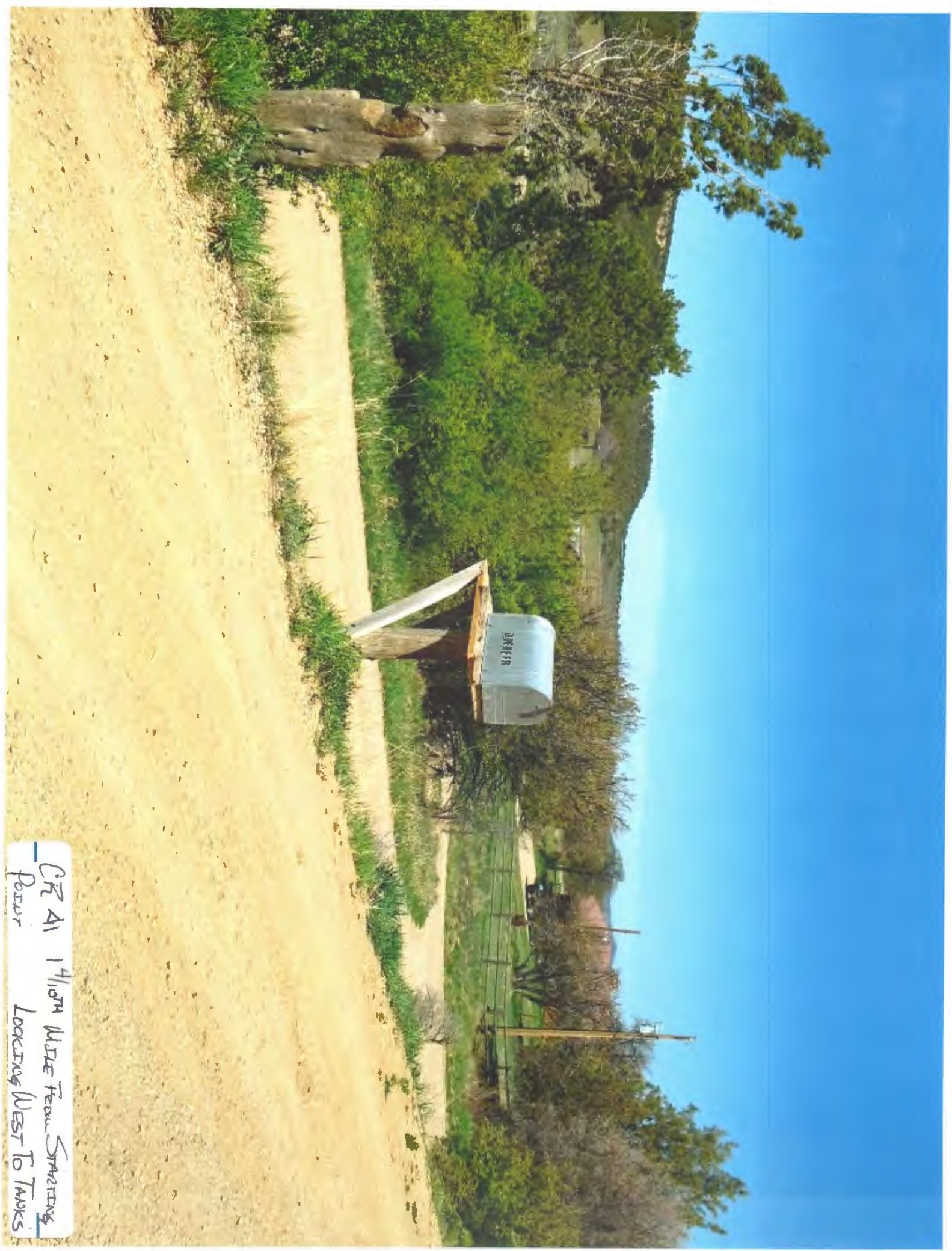
CR 41 12/10/04 Mile From Star Line
Point Looking North





CR 41 1^{3/10}th Mile From Starting
Point Looking North

CR 41 1410TH WIDE FEW STARTING
FOUR LOOKING WEST TO TANKS



CR 41 | 4.5/10TH MILE FROM SPRING
FOUR Looking West to Tanks



CR 41 15/10/14 Mire Frazz Smith
Point Looking South to Tanks

