

**ANADARKO PETROLEUM CORP - EBUS  
DO NOT MAIL - PO BOX 4995  
THE WOODLANDS, Texas**

Badding 2N-26HZ

**Majors 29**

## **Post Job Summary** **Cement Surface Casing**

Date Prepared: 12/23/2013  
Version: 1

Service Supervisor: LAVALLEY, LARRY

Submitted by: TRIER, DEREK

**HALLIBURTON**

# HALLIBURTON

## Wellbore Geometry

---

Job Tubulars					MD		Shoe Joint Length ft
Type	Description	Size in	ID in	Wt lbm/ft	Top ft	Bottom ft	
Casing	9 5/8" Surface Casing	9.63	8.921	36.00	0.00	1,305.00	43.00
Open Hole Section	13 1/2" Open Hole Section		13.500		0.00	1,310.00	0.00

# HALLIBURTON

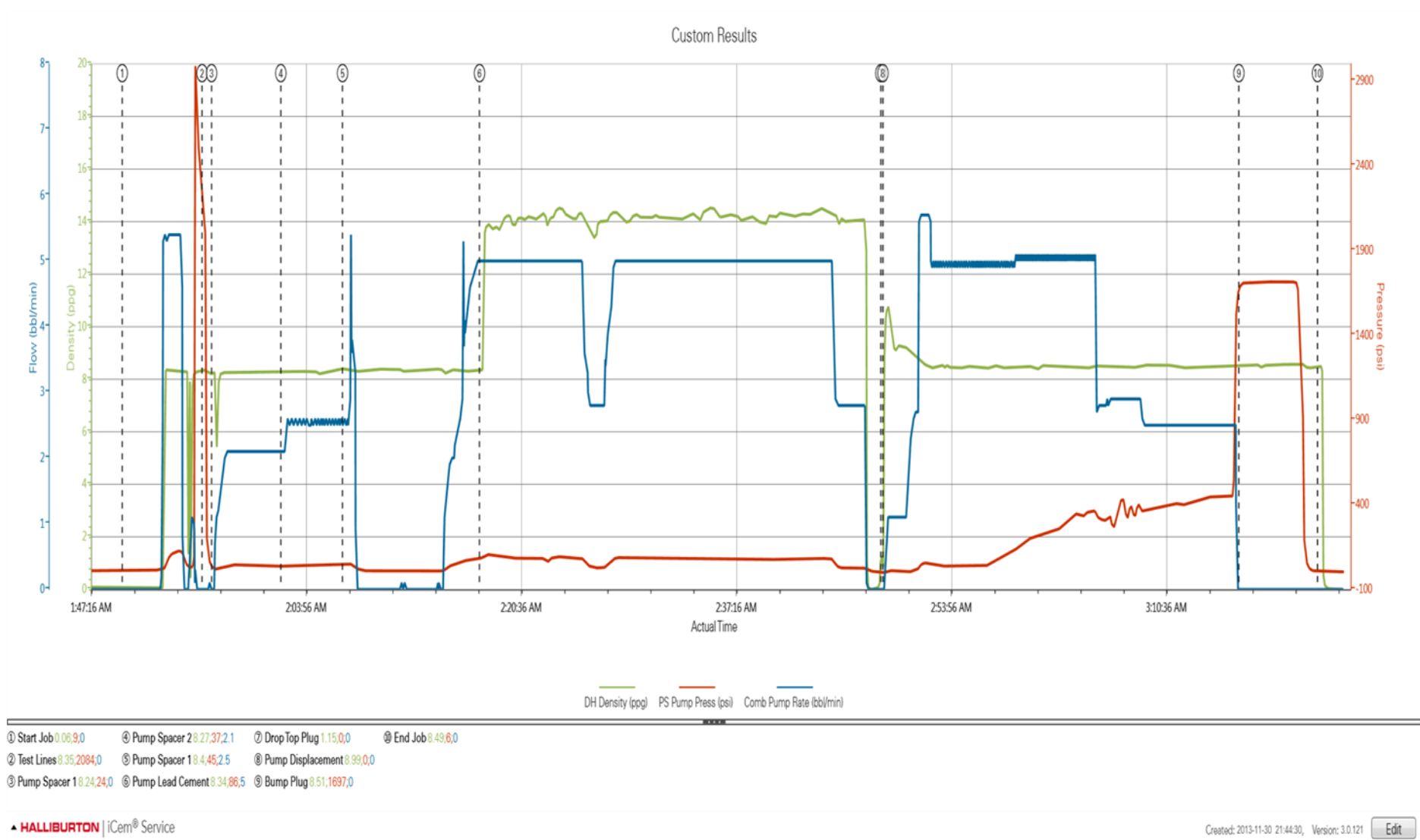
## ***Pumping Schedule***

---

Stage /Plug #	Fluid #	Fluid Type	Fluid Name	Surface Density lbm/gal	Avg Rate bbl/min	Surface Volume	Downhole Volume
1	1	Spacer	Fresh Water Spacer	8.33	5.00	10.0 bbl	10.0 bbl
1	2	Spacer	Mud Flush	8.40	5.00	12.0 bbl	12.0 bbl
1	1	Spacer	Fresh Water Spacer	8.33	5.00	10.0 bbl	10.0 bbl
1	3	Cement Slurry	SwiftCem B2	14.20	5.00	494.0 sacks	494.0 sacks

# HALLIBURTON

## Data Acquisition



# HALLIBURTON

## Service Supervisor Reports

### Job Log

Date/Time	Chart #	Activity Code	Pump Rate	Cum Vol	Pump	Pressure (psig)	Comments
11/30/2013 15:00		Call Out					CREW CALLED AT 15:00
11/30/2013 17:22		Safety Meeting - Pre Job					ALL 3RD PARTIES ON LOC
11/30/2013 21:15		Arrive at Location from Service Center					
11/30/2013 21:15		Waiting - Arrived Early to Location - Start Time					WAIT ON RIG TO PULL DRILL PIPE AND RUN CASING
11/30/2013 21:20		Assessment Of Location Safety Meeting					HAZARD HUNT ON LOCATION
12/01/2013 01:45		Waiting - Arrived Early to Location - End Time					RIG TURNED OVER TO HES TO RIG UP
12/01/2013 01:49		Start Job					
12/01/2013 01:55		Test Lines				2098.0	FRESH WATER WITH NO ADDITIVES
12/01/2013 01:56		Pump Spacer 2	5	10		25.0	FRESH WATER WITH NO ADDITIVES
12/01/2013 02:02		Pump Spacer 1	5	12		37.0	FRESH WATER WITH MUDFLUSH III ADDED
12/01/2013 02:06		Pump Spacer 2	5	10		45.0	FRESH WATER WITH NO ADDITIVES
12/01/2013 02:17		Pump Lead Cement	5	135		85.0	494 SKS SWIFTCEN B2 MIXED @ 14.2 PPG YIELD 1.54 FT3/FT AND 7.66 GAL/SK. VERIFIED BY PRESSURIZED SCALES
12/01/2013 02:46		Shutdown					
12/01/2013 02:48		Drop Top Plug					HWE TOP PLUG PRELOADED
12/01/2013 02:48		Pump Displacement	5	98		497.0	FRESH WATER WITH NO ADDITIVES. CAUGHT CEMENT @ 37 BBLS AWAY AND SPACER RETURNED TO SURFACE @ 59 BBLS AWAY AND 5 BBLS CEMENT BACK TO SURFACE
12/01/2013 03:16		Bump Plug	3			1694.0	CALCULATED PRESSURE TO LAND WAS 473 AND PRESSURE TO LIFT WAS 553 PSI
12/01/2013 03:20		Other					FLOATS HELD AND GOT 1 BBLS BACK
12/01/2013 03:22		End Job					HELD SAFETY MEETING TO RIG DOWN AND DEPART LOCATION

### The Road to Excellence Starts with Safety

<b>Sold To #:</b> 300466	<b>Ship To #:</b> 3204353	<b>Quote #:</b>	<b>Sales Order #:</b> 900928869
<b>Customer:</b> ANADARKO PETROLEUM CORP - EBUS		<b>Customer Rep:</b> Balkenbush, Bob	
<b>Well Name:</b> Badding		<b>Well #:</b> 2N-26HZ	<b>API/UWI #:</b> 05-123-38407
<b>Field:</b> WATTENBERG	<b>City (SAP):</b> FORT LUPTON	<b>County/Parish:</b> Weld	<b>State:</b> Colorado
<b>Contractor:</b> Majors		<b>Rig/Platform Name/Num:</b> Majors29	
<b>Job Purpose:</b> Cement Surface Casing			
<b>Well Type:</b> Development Well		<b>Job Type:</b> Cement Surface Casing	
<b>Sales Person:</b> PLIENESS, RYAN		<b>Srv Supervisor:</b> LAVALLEY, LARRY	<b>MBU ID Emp #:</b> 419296

### Job Personnel

HES Emp Name	Exp Hrs	Emp #	HES Emp Name	Exp Hrs	Emp #	HES Emp Name	Exp Hrs	Emp #
BROOM, KENDALL L	0.0	524682	LAVALLEY, LARRY P	0.0	419296	MYRE, JAMES	0.0	549859
WILEY, JAMES A	0.0	440080						

### Equipment

HES Unit #	Distance-1 way	HES Unit #	Distance-1 way	HES Unit #	Distance-1 way	HES Unit #	Distance-1 way
11410470C	10 mile	11518549	10 mile	11562570C	10 mile	53301	10 mile
5707C	10 mile						

### Job

Formation Name	Formation Depth (MD)	Top	Bottom	Form Type	Job depth MD	Water Depth	Perforation Depth (MD)	From	To
				BHST	1310. ft				
					Job Depth TVD	Wk Ht Above Floor			
					1310. ft	6. ft			

### Job Times

Date	Time	Time Zone
30 - Nov - 2013	15:00	MST
30 - Nov - 2013	21:15	MST
01 - Dec - 2013	01:50	MST
01 - Dec - 2013	03:30	MST
01 - Dec - 2013	04:15	MST

### Well Data

Description	New / Used	Max pressure psig	Size in	ID in	Weight lbm/ft	Thread	Grade	Top MD ft	Bottom MD ft	Top TVD ft	Bottom TVD ft
13 1/2" Open Hole Section				13.5				.	1310.		
9 5/8" Surface Casing	Unknown		9.625	8.921	36.		J-55	.	1305.		

### Sales/Rental/3<sup>rd</sup> Party (HES)

Description	Qty	Qty uom	Depth	Supplier
CMT CASING EQUIPMENT BOM	1	JOB		
MILEAGE FOR CEMENTING CREW,ZI	20	MI		
ZI FUEL SURCHG-CARS/PICKUPS<1 1/2TON	20	MI		
KIT,HALL WELD-A	1	EA		
CNTRLZR, 9 5/8"x13 3/4',#500-0963-1375	8	EA		
Description	Qty	Qty uom	Depth	Supplier
BASKET - CEMENT - 9-5/8 CSG X 12-1/4	1	EA		
PLUG,CMTG,TOP,9 5/8,HWE,8.16 MIN/9.06 MA	1	EA		
COLLAR-STOP-9 5/8"-FRICTION-HINGED	2	EA		

### Fluid Data

**Stage/Plug #: 1**

Summit

Monday, December 23, 2013 15:07:00

Version:

Fluid #	Stage Type	Fluid Name	Qty	Qty uom	Mixing Density lbm/gal	Yield ft <sup>3</sup> /sk	Mix Fluid Gal/sk	Rate bbl/min	Total Mix Fluid Gal/sk
1	Fresh Water Spacer		10.00	bbl	8.33			5.0	
2	Mud Flush		12.00	bbl	8.4			5.0	
3.5 lbm/bbl		MUD FLUSH III, 40 LB SACK (101633304)							
42 gal/bbl		MUD FLUSH III - SBM (528788)							
1	Fresh Water Spacer		10.00	bbl	8.33			5.0	
3	SwiftCem B2	SWIFTCM (TM) SYSTEM (452990)	494.0	sacks	14.2	1.54	7.66	5.0	7.66
7.66 Gal		FRESH WATER							
<b>Calculated Values</b>		<b>Pressures</b>		<b>Volumes</b>					
Displacement	98	Shut In: Instant		Lost Returns	0	Cement Slurry		Pad	
Top Of Cement		5 Min		Cement Returns	5	Actual Displacement	98	Treatment	
Frac Gradient		15 Min		Spacers	32	Load and Breakdown		Total Job	
<b>Rates</b>									
Circulating		Mixing		Displacement		Avg. Job			
Cement Left In Pipe	Amount	43 ft	Reason	Shoe Joint					
Frac Ring # 1 @	ID		Frac ring # 2 @	ID		Frac Ring # 3 @	ID	Frac Ring # 4 @	ID
The Information Stated Herein Is Correct				Customer Representative Signature					

