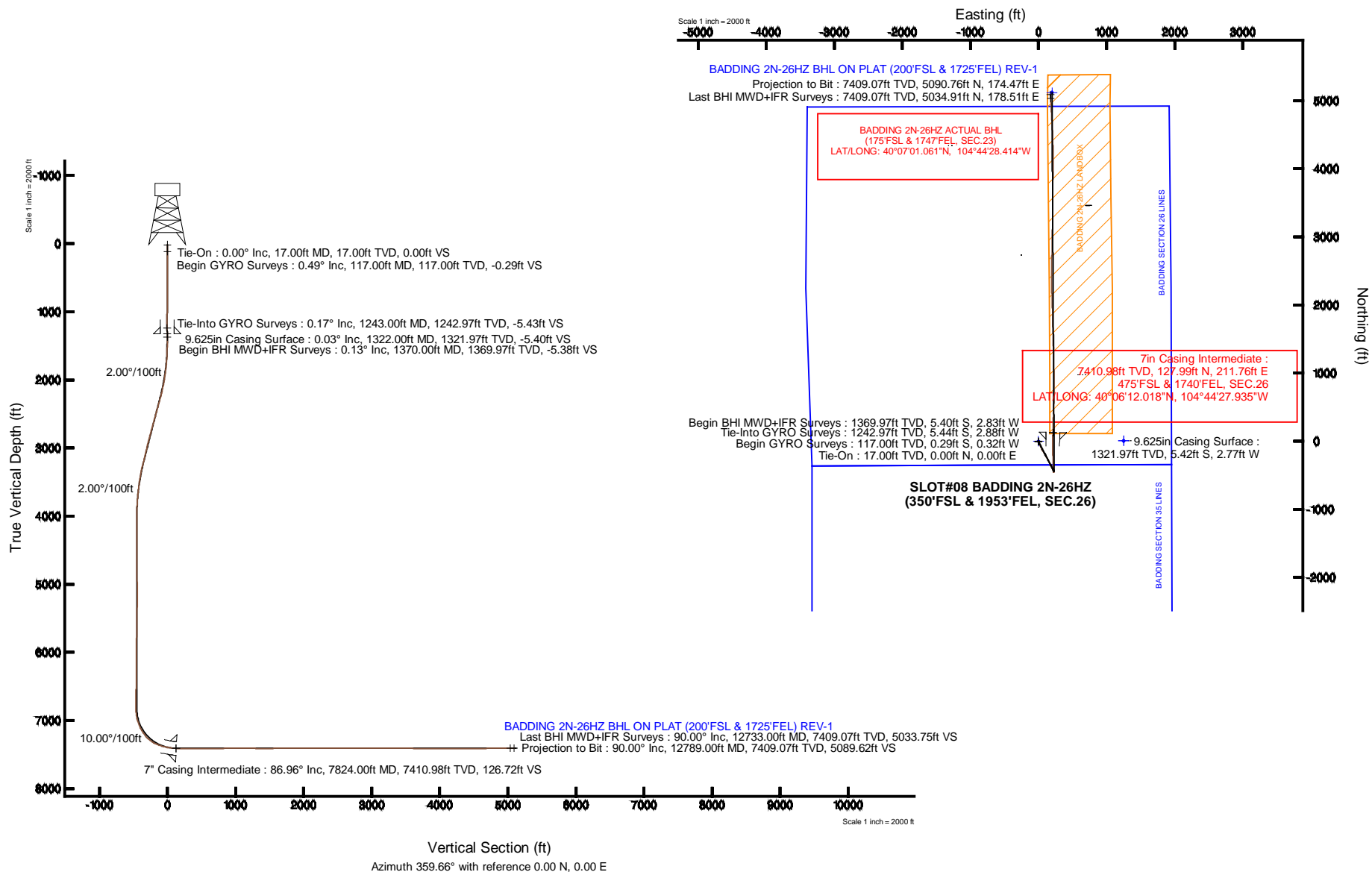


Location:	COLORADO	Slot:	SLOT#08 BADDING 2N-26HZ (350'FSL & 1953'FEL, SEC.26)
Field:	WELD COUNTY (KERR MCGEE)	Well:	BADDING 2N-26HZ
Facility:	SEC.26-T2N-R66W	Wellbore:	BADDING 2N-26HZ PWB

True vertical depths are referenced to XTREME 8 (17KB) (RKB)	Grid System: NAD83 / Lambert Colorado SP, Northern Zone (501), US feet
Measured depths are referenced to XTREME 8 (17KB) (RKB)	North Reference: True north
XTREME 8 (17KB) (RKB) to Mean Sea Level: 5129 feet	Scale: True distance
Mean Sea Level to Mud line (At Slot: SLOTH8 BADOING 2N-26H2 (550FSL & 1953FEL, SEC.26): 0 feet	Depths are in feet
Coordinates are in feet referenced to Slot	Created by: precain on 21/Apr/2014



# Actual Wellpath Report

BADDING 2N-26HZ AWP

Page 1 of 7

## REFERENCE WELLPATH IDENTIFICATION

Operator	KERR-MCGEE OIL & GAS ONSHORE LP	Slot	SLOT#08 BADDING 2N-26HZ (350'FSL & 1953'FEL, SEC.26)
Area	COLORADO	Well	BADDING 2N-26HZ
Field	WELD COUNTY (KERR MCGEE)	Wellbore	BADDING 2N-26HZ AWB
Facility	SEC.26-T2N-R66W		

## REPORT SETUP INFORMATION

Projection System	NAD83 / Lambert Colorado SP, Northern Zone (501), US feet	Software System	WellArchitect® 4.0.0
North Reference	True	User	Precain
Scale	0.99996	Report Generated	21/Apr/2014 at 15:59
Convergence at slot	n/a	Database/Source file	WellArchitectDB/BADDING_2N-26HZ_AWB.xml

## WELLPATH LOCATION

	Local coordinates		Grid coordinates		Geographic coordinates	
	North[ft]	East[ft]	Easting[US ft]	Northing[US ft]	Latitude	Longitude
Slot Location	-5.84	-1248.97	3212075.11	1281269.09	40°06'10.753"N	104°44'30.660"W
Facility Reference Pt			3213323.93	1281285.67	40°06'10.811"N	104°44'14.587"W
Field Reference Pt			3197771.84	1268891.29	40°04'09.600"N	104°47'36.000"W

## WELLPATH DATUM

Calculation method	Minimum curvature	XTREME 8 (17'KB) (RKB) to Facility Vertical Datum	5129.00ft
Horizontal Reference Pt	Slot	XTREME 8 (17'KB) (RKB) to Mean Sea Level	5129.00ft
Vertical Reference Pt	XTREME 8 (17'KB) (RKB)	XTREME 8 (17'KB) (RKB) to Mud Line at Slot (SLOT#08 BADDING 2N-26HZ (350'FSL & 1953'FEL, SEC.26))	5129.00ft
MD Reference Pt	XTREME 8 (17'KB) (RKB)	Section Origin	N 0.00, E 0.00 ft
Field Vertical Reference	Mean Sea Level	Section Azimuth	359.66°

# Actual Wellpath Report

BADDING 2N-26HZ AWP

Page 2 of 7

## REFERENCE WELLPATH IDENTIFICATION

Operator	KERR-MCGEE OIL & GAS ONSHORE LP	Slot	SLOT#08 BADDING 2N-26HZ (350'FSL & 1953'FEL, SEC.26)
Area	COLORADO	Well	BADDING 2N-26HZ
Field	WELD COUNTY (KERR MCGEE)	Wellbore	BADDING 2N-26HZ AWB
Facility	SEC.26-T2N-R66W		

## WELLPATH DATA (148 stations) † = interpolated/extrapolated station

MD [ft]	Inclination [°]	Azimuth [°]	TVD [ft]	Vert Sect [ft]	North [ft]	East [ft]	Latitude	Longitude	DLS [°/100ft]	Comments
0.00†	0.000	227.670	0.00	0.00	0.00	0.00	40°06'10.753"N	104°44'30.660"W	0.00	
17.00	0.000	227.670	17.00	0.00	0.00	0.00	40°06'10.753"N	104°44'30.660"W	0.00	Tie-On
117.00	0.490	227.670	117.00	-0.29	-0.29	-0.32	40°06'10.750"N	104°44'30.664"W	0.49	Begin GYRO Surveys
217.00	0.490	222.900	217.00	-0.88	-0.89	-0.92	40°06'10.744"N	104°44'30.672"W	0.04	
317.00	0.400	225.310	316.99	-1.44	-1.45	-1.46	40°06'10.739"N	104°44'30.679"W	0.09	
417.00	0.380	220.700	416.99	-1.93	-1.94	-1.93	40°06'10.734"N	104°44'30.685"W	0.04	
517.00	0.350	217.380	516.99	-2.42	-2.44	-2.33	40°06'10.729"N	104°44'30.690"W	0.04	
617.00	0.580	223.750	616.98	-3.03	-3.05	-2.86	40°06'10.723"N	104°44'30.697"W	0.24	
717.00	0.540	211.740	716.98	-3.79	-3.81	-3.46	40°06'10.715"N	104°44'30.705"W	0.12	
817.00	0.500	190.190	816.98	-4.62	-4.64	-3.79	40°06'10.707"N	104°44'30.709"W	0.20	
917.00	0.280	102.190	916.97	-5.10	-5.12	-3.63	40°06'10.702"N	104°44'30.707"W	0.56	
1017.00	0.260	150.360	1016.97	-5.35	-5.37	-3.27	40°06'10.700"N	104°44'30.702"W	0.22	
1117.00	0.090	79.160	1116.97	-5.54	-5.56	-3.08	40°06'10.698"N	104°44'30.700"W	0.25	
1217.00	0.120	44.040	1216.97	-5.45	-5.47	-2.94	40°06'10.699"N	104°44'30.698"W	0.07	
1243.00	0.170	84.100	1242.97	-5.43	-5.44	-2.88	40°06'10.699"N	104°44'30.697"W	0.42	Tie-Into GYRO Surveys
1370.00	0.130	279.170	1369.97	-5.38	-5.40	-2.83	40°06'10.700"N	104°44'30.696"W	0.23	Begin BHI MWD+IFR Surveys
1460.00	0.400	44.260	1459.97	-5.14	-5.16	-2.71	40°06'10.702"N	104°44'30.695"W	0.54	
1551.00	1.350	156.490	1550.96	-5.90	-5.91	-2.06	40°06'10.695"N	104°44'30.687"W	1.70	
1660.00	3.070	161.570	1659.88	-9.86	-9.86	-0.63	40°06'10.656"N	104°44'30.668"W	1.59	
1752.00	5.310	157.300	1751.63	-16.14	-16.13	1.79	40°06'10.594"N	104°44'30.637"W	2.46	
1843.00	7.040	159.030	1842.10	-25.25	-25.22	5.41	40°06'10.504"N	104°44'30.590"W	1.91	
1934.00	9.160	155.510	1932.18	-37.08	-37.02	10.41	40°06'10.387"N	104°44'30.526"W	2.39	
2026.00	11.310	154.530	2022.71	-51.93	-51.83	17.33	40°06'10.241"N	104°44'30.437"W	2.34	
2117.00	13.130	152.220	2111.65	-69.19	-69.03	25.98	40°06'10.071"N	104°44'30.326"W	2.07	
2209.00	15.020	154.990	2200.88	-89.30	-89.08	35.89	40°06'09.873"N	104°44'30.198"W	2.18	
2301.00	16.880	154.670	2289.34	-112.24	-111.96	46.65	40°06'09.647"N	104°44'30.060"W	2.02	
2392.00	18.160	147.810	2376.12	-136.26	-135.91	59.86	40°06'09.410"N	104°44'29.890"W	2.67	
2484.00	17.890	146.830	2463.61	-160.32	-159.87	75.23	40°06'09.173"N	104°44'29.692"W	0.44	
2574.00	17.290	150.730	2549.40	-183.64	-183.11	89.33	40°06'08.944"N	104°44'29.510"W	1.47	
2665.00	18.210	151.850	2636.07	-208.05	-207.44	102.65	40°06'08.703"N	104°44'29.339"W	1.08	
2757.00	17.940	150.830	2723.53	-233.18	-232.49	116.34	40°06'08.456"N	104°44'29.163"W	0.45	
2849.00	16.670	150.010	2811.36	-257.06	-256.29	129.84	40°06'08.220"N	104°44'28.989"W	1.41	
2940.00	16.030	151.000	2898.68	-279.43	-278.58	142.46	40°06'08.000"N	104°44'28.827"W	0.77	
3031.00	14.980	153.390	2986.37	-301.01	-300.09	153.82	40°06'07.787"N	104°44'28.681"W	1.35	
3122.00	13.870	155.510	3074.50	-321.51	-320.53	163.61	40°06'07.585"N	104°44'28.555"W	1.35	
3214.00	15.320	156.080	3163.53	-342.71	-341.68	173.11	40°06'07.376"N	104°44'28.432"W	1.58	
3305.00	16.180	152.640	3251.12	-365.02	-363.93	183.81	40°06'07.157"N	104°44'28.295"W	1.39	
3390.00	13.790	149.950	3333.22	-384.38	-383.22	194.33	40°06'06.966"N	104°44'28.159"W	2.93	
3476.00	11.110	149.550	3417.19	-400.45	-399.23	203.66	40°06'06.808"N	104°44'28.039"W	3.12	
3561.00	9.050	151.720	3500.87	-413.44	-412.18	210.98	40°06'06.680"N	104°44'27.945"W	2.46	
3646.00	8.030	152.950	3584.93	-424.65	-423.36	216.84	40°06'06.569"N	104°44'27.869"W	1.22	
3731.00	6.010	152.940	3669.29	-433.93	-432.61	221.57	40°06'06.478"N	104°44'27.809"W	2.38	
3817.00	4.720	152.680	3754.91	-441.11	-439.76	225.24	40°06'06.407"N	104°44'27.761"W	1.50	
3902.00	3.630	156.820	3839.68	-446.70	-445.34	227.91	40°06'06.352"N	104°44'27.727"W	1.33	
3988.00	1.810	140.350	3925.59	-450.26	-448.89	229.84	40°06'06.317"N	104°44'27.702"W	2.28	

# Actual Wellpath Report

BADDING 2N-26HZ AWP

Page 3 of 7

REFERENCE WELLPATH IDENTIFICATION			
Operator	KERR-MCGEE OIL & GAS ONSHORE LP	Slot	SLOT#08 BADDING 2N-26HZ (350'FSL & 1953'FEL, SEC.26)
Area	COLORADO	Well	BADDING 2N-26HZ
Field	WELD COUNTY (KERR MCGEE)	Wellbore	BADDING 2N-26HZ AWB
Facility	SEC.26-T2N-R66W		

WELLPATH DATA (148 stations)										
MD [ft]	Inclination [°]	Azimuth [°]	TVD [ft]	Vert Sect [ft]	North [ft]	East [ft]	Latitude	Longitude	DLS [°/100ft]	Comments
4073.00	1.130	238.450	4010.57	-451.74	-450.36	229.99	40°06'06.302"N	104°44'27.700"W	2.66	
4158.00	0.060	160.450	4095.56	-452.21	-450.85	229.29	40°06'06.298"N	104°44'27.709"W	1.32	
4243.00	0.090	290.710	4180.56	-452.23	-450.86	229.24	40°06'06.297"N	104°44'27.710"W	0.16	
4414.00	0.560	233.560	4351.56	-452.68	-451.31	228.44	40°06'06.293"N	104°44'27.720"W	0.30	
4584.00	0.800	283.520	4521.55	-452.88	-451.53	226.62	40°06'06.291"N	104°44'27.744"W	0.36	
4669.00	0.750	288.310	4606.54	-452.56	-451.21	225.51	40°06'06.294"N	104°44'27.758"W	0.10	
4840.00	1.280	293.040	4777.51	-451.44	-450.12	222.69	40°06'06.305"N	104°44'27.794"W	0.31	
4925.00	1.840	344.810	4862.48	-449.75	-448.43	221.46	40°06'06.322"N	104°44'27.810"W	1.71	
5010.00	1.340	27.280	4947.45	-447.55	-446.23	221.56	40°06'06.343"N	104°44'27.809"W	1.46	
5095.00	1.300	26.080	5032.43	-445.81	-444.48	222.44	40°06'06.361"N	104°44'27.797"W	0.06	
5180.00	0.190	212.610	5117.43	-445.06	-443.73	222.79	40°06'06.368"N	104°44'27.793"W	1.75	
5266.00	0.460	196.480	5203.42	-445.51	-444.18	222.61	40°06'06.364"N	104°44'27.795"W	0.33	
5436.00	1.230	165.660	5373.40	-447.93	-446.60	222.87	40°06'06.340"N	104°44'27.792"W	0.51	
5521.00	1.110	163.940	5458.39	-449.61	-448.28	223.33	40°06'06.323"N	104°44'27.786"W	0.15	
5692.00	0.990	209.250	5629.36	-452.49	-451.16	223.06	40°06'06.295"N	104°44'27.789"W	0.48	
5777.00	1.240	230.140	5714.35	-453.71	-452.39	222.00	40°06'06.282"N	104°44'27.803"W	0.56	
5862.00	0.340	157.870	5799.34	-454.53	-453.21	221.39	40°06'06.274"N	104°44'27.811"W	1.39	
6033.00	0.560	224.830	5970.33	-455.59	-454.28	220.99	40°06'06.264"N	104°44'27.816"W	0.31	
6118.00	0.770	227.010	6055.33	-456.27	-454.96	220.28	40°06'06.257"N	104°44'27.825"W	0.25	
6203.00	0.330	145.500	6140.32	-456.86	-455.55	220.00	40°06'06.251"N	104°44'27.829"W	0.93	
6374.00	1.320	127.040	6311.30	-458.47	-457.14	221.85	40°06'06.235"N	104°44'27.805"W	0.59	
6629.00	0.640	192.160	6566.27	-461.64	-460.30	223.89	40°06'06.204"N	104°44'27.779"W	0.47	
6832.00	0.900	216.240	6769.25	-464.03	-462.70	222.71	40°06'06.181"N	104°44'27.794"W	0.20	
6885.00	0.520	313.230	6822.25	-464.20	-462.87	222.29	40°06'06.179"N	104°44'27.799"W	2.06	
6928.00	3.370	352.140	6865.22	-462.81	-461.48	221.98	40°06'06.193"N	104°44'27.803"W	6.94	
6970.00	6.810	352.900	6907.05	-459.11	-457.79	221.50	40°06'06.229"N	104°44'27.810"W	8.19	
7013.00	10.710	353.650	6949.54	-452.60	-451.29	220.74	40°06'06.293"N	104°44'27.819"W	9.07	
7056.00	14.290	355.770	6991.52	-443.33	-442.02	219.91	40°06'06.385"N	104°44'27.830"W	8.39	
7098.00	18.230	358.340	7031.83	-431.59	-430.28	219.34	40°06'06.501"N	104°44'27.837"W	9.53	
7141.00	22.040	357.750	7072.19	-416.79	-415.49	218.82	40°06'06.647"N	104°44'27.844"W	8.87	
7184.00	26.150	357.350	7111.44	-399.25	-397.95	218.07	40°06'06.820"N	104°44'27.854"W	9.57	
7226.00	30.140	357.000	7148.46	-379.47	-378.17	217.09	40°06'07.016"N	104°44'27.866"W	9.51	
7269.00	34.580	357.570	7184.78	-356.48	-355.19	216.01	40°06'07.243"N	104°44'27.880"W	10.35	
7312.00	39.050	358.730	7219.19	-330.73	-329.44	215.19	40°06'07.497"N	104°44'27.891"W	10.52	
7354.00	44.360	358.810	7250.54	-302.80	-301.51	214.59	40°06'07.773"N	104°44'27.898"W	12.64	
7397.00	49.270	357.730	7279.96	-271.46	-270.19	213.63	40°06'08.083"N	104°44'27.911"W	11.56	
7439.00	54.790	357.340	7305.79	-238.39	-237.12	212.20	40°06'08.410"N	104°44'27.929"W	13.16	
7482.00	60.330	357.410	7328.84	-202.14	-200.88	210.54	40°06'08.768"N	104°44'27.951"W	12.88	
7524.00	65.890	358.150	7347.83	-164.72	-163.47	209.10	40°06'09.138"N	104°44'27.969"W	13.33	
7567.00	70.110	359.430	7363.94	-124.86	-123.62	208.26	40°06'09.531"N	104°44'27.980"W	10.19	
7610.00	73.690	0.310	7377.30	-84.00	-82.75	208.17	40°06'09.935"N	104°44'27.981"W	8.55	
7652.00	76.790	0.920	7387.99	-43.40	-42.14	208.61	40°06'10.337"N	104°44'27.975"W	7.51	
7695.00	79.230	0.930	7396.93	-1.35	-0.09	209.29	40°06'10.752"N	104°44'27.967"W	5.67	
7738.00	82.220	0.920	7403.86	41.08	42.34	209.97	40°06'11.171"N	104°44'27.958"W	6.95	
7787.00	86.230	1.310	7408.79	89.80	91.07	210.92	40°06'11.653"N	104°44'27.946"W	8.22	

# Actual Wellpath Report

BADDING 2N-26HZ AWP

Page 4 of 7

## REFERENCE WELLPATH IDENTIFICATION

Operator	KERR-MCGEE OIL & GAS ONSHORE LP	Slot	SLOT#08 BADDING 2N-26HZ (350'FSL & 1953'FEL, SEC.26)
Area	COLORADO	Well	BADDING 2N-26HZ
Field	WELD COUNTY (KERR MCGEE)	Wellbore	BADDING 2N-26HZ AWP
Facility	SEC.26-T2N-R66W		

## WELLPATH DATA (148 stations) † = interpolated/extrapolated station

MD [ft]	Inclination [°]	Azimuth [°]	TVD [ft]	Vert Sect [ft]	North [ft]	East [ft]	Latitude	Longitude	DLS [°/100ft]	Comments
7824.00†	86.962	1.290	7410.98	126.72	127.99	211.76	40°06'12.018"N	104°44'27.935"W	1.98	7" Casing Point
7881.00	88.090	1.260	7413.44	183.64	184.93	213.03	40°06'12.580"N	104°44'27.919"W	1.98	
7966.00	88.710	1.810	7415.82	268.56	269.86	215.31	40°06'13.420"N	104°44'27.889"W	0.97	
8052.00	89.160	2.080	7417.41	354.48	355.80	218.22	40°06'14.269"N	104°44'27.852"W	0.61	
8137.00	90.150	1.910	7417.93	439.41	440.74	221.18	40°06'15.108"N	104°44'27.814"W	1.18	
8222.00	90.210	1.830	7417.66	524.34	525.70	223.96	40°06'15.948"N	104°44'27.778"W	0.12	
8307.00	91.290	1.060	7416.55	609.29	610.66	226.10	40°06'16.788"N	104°44'27.750"W	1.56	
8392.00	91.780	0.880	7414.27	694.24	695.62	227.54	40°06'17.627"N	104°44'27.732"W	0.61	
8478.00	91.260	359.310	7411.99	780.20	781.58	227.68	40°06'18.477"N	104°44'27.730"W	1.92	
8563.00	90.920	359.610	7410.37	865.19	866.57	226.88	40°06'19.317"N	104°44'27.740"W	0.53	
8648.00	90.210	359.490	7409.53	950.18	951.56	226.21	40°06'20.156"N	104°44'27.749"W	0.85	
8734.00	89.380	358.840	7409.84	1036.18	1037.55	224.96	40°06'21.006"N	104°44'27.765"W	1.23	
8819.00	89.600	359.140	7410.60	1121.17	1122.53	223.46	40°06'21.846"N	104°44'27.784"W	0.44	
8904.00	90.430	359.170	7410.58	1206.16	1207.52	222.21	40°06'22.686"N	104°44'27.800"W	0.98	
8989.00	88.980	358.510	7411.01	1291.15	1292.50	220.49	40°06'23.526"N	104°44'27.822"W	1.87	
9160.00	89.870	358.360	7412.73	1462.10	1463.42	215.82	40°06'25.215"N	104°44'27.882"W	0.53	
9245.00	92.310	358.430	7411.11	1547.06	1548.37	213.44	40°06'26.054"N	104°44'27.913"W	2.87	
9330.00	90.890	358.900	7408.74	1632.01	1633.31	211.46	40°06'26.894"N	104°44'27.939"W	1.76	
9415.00	89.840	358.320	7408.20	1716.99	1718.28	209.39	40°06'27.733"N	104°44'27.965"W	1.41	
9500.00	91.380	358.780	7407.29	1801.97	1803.25	207.24	40°06'28.573"N	104°44'27.993"W	1.89	
9586.00	90.090	358.730	7406.19	1887.95	1889.22	205.38	40°06'29.423"N	104°44'28.017"W	1.50	
9671.00	89.720	358.640	7406.33	1972.94	1974.20	203.43	40°06'30.262"N	104°44'28.042"W	0.45	
9756.00	89.750	357.420	7406.72	2057.90	2059.14	200.50	40°06'31.102"N	104°44'28.080"W	1.44	
9841.00	90.060	358.170	7406.86	2142.86	2144.08	197.23	40°06'31.941"N	104°44'28.122"W	0.95	
9927.00	90.710	359.490	7406.29	2228.84	2230.06	195.48	40°06'32.791"N	104°44'28.144"W	1.71	
10012.00	89.870	359.680	7405.86	2313.84	2315.05	194.86	40°06'33.631"N	104°44'28.152"W	1.01	
10097.00	90.610	0.470	7405.50	2398.84	2400.05	194.97	40°06'34.471"N	104°44'28.151"W	1.27	
10182.00	89.620	359.880	7405.33	2483.83	2485.05	195.23	40°06'35.311"N	104°44'28.147"W	1.36	
10267.00	90.360	0.490	7405.34	2568.83	2570.05	195.51	40°06'36.151"N	104°44'28.144"W	1.13	
10352.00	88.920	0.260	7405.88	2653.82	2655.04	196.06	40°06'36.990"N	104°44'28.137"W	1.72	
10438.00	90.120	1.030	7406.60	2739.80	2741.03	197.03	40°06'37.840"N	104°44'28.124"W	1.66	
10523.00	88.860	0.670	7407.36	2824.78	2826.02	198.29	40°06'38.680"N	104°44'28.108"W	1.54	
10608.00	90.490	1.640	7407.84	2909.74	2910.99	200.01	40°06'39.520"N	104°44'28.086"W	2.23	
10693.00	89.690	0.560	7407.70	2994.71	2995.98	201.64	40°06'40.360"N	104°44'28.065"W	1.58	
10778.00	90.240	1.160	7407.76	3079.69	3080.97	202.91	40°06'41.200"N	104°44'28.048"W	0.96	
10864.00	90.700	1.600	7407.05	3165.65	3166.94	204.98	40°06'42.049"N	104°44'28.022"W	0.74	
10949.00	88.550	0.110	7407.61	3250.62	3251.92	206.25	40°06'42.889"N	104°44'28.005"W	3.08	
11034.00	90.670	0.500	7408.19	3335.61	3336.91	206.70	40°06'43.729"N	104°44'28.000"W	2.54	
11119.00	89.470	359.810	7408.08	3420.60	3421.91	206.93	40°06'44.569"N	104°44'27.997"W	1.63	
11205.00	89.500	0.910	7408.86	3506.59	3507.90	207.47	40°06'45.419"N	104°44'27.990"W	1.28	
11290.00	88.060	0.080	7410.66	3591.56	3592.88	208.21	40°06'46.258"N	104°44'27.980"W	1.96	
11375.00	88.760	0.800	7413.02	3676.52	3677.84	208.86	40°06'47.098"N	104°44'27.972"W	1.18	
11460.00	89.590	0.610	7414.25	3761.50	3762.82	209.91	40°06'47.938"N	104°44'27.958"W	1.00	
11545.00	90.210	0.690	7414.40	3846.48	3847.82	210.87	40°06'48.778"N	104°44'27.946"W	0.74	
11630.00	89.440	0.120	7414.66	3931.47	3932.81	211.47	40°06'49.618"N	104°44'27.938"W	1.13	

# Actual Wellpath Report

BADDING 2N-26HZ AWP

Page 5 of 7

## REFERENCE WELLPATH IDENTIFICATION

Operator	KERR-MCGEE OIL & GAS ONSHORE LP	Slot	SLOT#08 BADDING 2N-26HZ (350'FSL & 1953'FEL, SEC.26)
Area	COLORADO	Well	BADDING 2N-26HZ
Field	WELD COUNTY (KERR MCGEE)	Wellbore	BADDING 2N-26HZ AWB
Facility	SEC.26-T2N-R66W		

## WELLPATH DATA (148 stations)

MD [ft]	Inclination [°]	Azimuth [°]	TVD [ft]	Vert Sect [ft]	North [ft]	East [ft]	Latitude	Longitude	DLS [°/100ft]	Comments
11716.00	90.670	1.060	7414.57	4017.46	4018.81	212.36	40°06'50.467"N	104°44'27.927"W	1.80	
11801.00	90.270	1.080	7413.88	4102.43	4103.79	213.95	40°06'51.307"N	104°44'27.906"W	0.47	
11886.00	89.930	359.550	7413.73	4187.42	4188.79	214.41	40°06'52.147"N	104°44'27.900"W	1.84	
11972.00	90.030	358.850	7413.76	4273.42	4274.78	213.21	40°06'52.997"N	104°44'27.916"W	0.82	
12057.00	90.060	357.830	7413.69	4358.40	4359.74	210.75	40°06'53.837"N	104°44'27.947"W	1.20	
12142.00	90.300	358.000	7413.42	4443.36	4444.68	207.66	40°06'54.676"N	104°44'27.987"W	0.35	
12226.00	90.640	358.140	7412.73	4527.32	4528.63	204.83	40°06'55.506"N	104°44'28.024"W	0.44	
12311.00	90.610	357.590	7411.81	4612.27	4613.57	201.66	40°06'56.345"N	104°44'28.064"W	0.65	
12397.00	90.610	356.530	7410.89	4698.18	4699.45	197.25	40°06'57.194"N	104°44'28.121"W	1.23	
12482.00	89.930	356.530	7410.49	4783.05	4784.29	192.11	40°06'58.032"N	104°44'28.187"W	0.80	
12565.00	90.670	357.700	7410.06	4865.97	4867.18	187.93	40°06'58.851"N	104°44'28.241"W	1.67	
12733.00	90.000	355.870	7409.07	5033.75	5034.91	178.51	40°07'00.509"N	104°44'28.362"W	1.16	Last BHI MWD+IFR Surveys
12789.00	90.000	355.870	7409.07	5089.62	5090.76	174.47	40°07'01.061"N	104°44'28.414"W	0.00	Projection to Bit

## HOLE & CASING SECTIONS - Ref Wellbore: BADDING 2N-26HZ AWB Ref Wellpath: BADDING 2N-26HZ AWP

String/Diameter	Start MD [ft]	End MD [ft]	Interval [ft]	Start TVD [ft]	End TVD [ft]	Start N/S [ft]	Start E/W [ft]	End N/S [ft]	End E/W [ft]
13.5in Open Hole	17.00	1331.00	1314.00	17.00	1330.97	0.00	0.00	-5.41	-2.78
9.625in Casing Surface	17.00	1322.00	1305.00	17.00	1321.97	0.00	0.00	-5.42	-2.77
8.75in Open Hole	1331.00	7836.00	6505.00	1330.97	7411.59	-5.41	-2.78	139.98	212.03
7in Casing Intermediate	17.00	7824.00	7807.00	17.00	7410.98	0.00	0.00	127.99	211.76
6.125in Open Hole	7836.00	12789.00	4953.00	7411.59	7409.07	139.98	212.03	5090.76	174.47

# Actual Wellpath Report

BADDING 2N-26HZ AWP

Page 6 of 7

## REFERENCE WELLPATH IDENTIFICATION

Operator	KERR-MCGEE OIL & GAS ONSHORE LP	Slot	SLOT#08 BADDING 2N-26HZ (350'FSL & 1953'FEL, SEC.26)
Area	COLORADO	Well	BADDING 2N-26HZ
Field	WELD COUNTY (KERR MCGEE)	Wellbore	BADDING 2N-26HZ AWB
Facility	SEC.26-T2N-R66W		

## TARGETS

Name	MD [ft]	TVD [ft]	North [ft]	East [ft]	Grid East [US ft]	Grid North [US ft]	Latitude	Longitude	Shape
BADDING SECTION 26 LINES		-3.00	5.90	1249.05	3213324.01	1281285.67	40°06'10.811"N	104°44'14.586"W	polygon
BADDING SECTION 35 LINES		-3.00	5.90	1249.05	3213324.01	1281285.67	40°06'10.811"N	104°44'14.586"W	polygon
BADDING 2N-26HZ BHL ON PLAT (200'FSL & 1725'FEL) REV-1		7409.00	5117.62	196.90	3212228.24	1286387.99	40°07'01.326"N	104°44'28.126"W	point
BADDING 2N-26HZ LANDBOX		7409.00	0.00	0.00	3212075.11	1281269.09	40°06'10.753"N	104°44'30.660"W	polygon

## WELLPATH COMPOSITION - Ref Wellbore: BADDING 2N-26HZ AWB Ref Wellpath: BADDING 2N-26HZ AWP

Start MD [ft]	End MD [ft]	Positional Uncertainty Model	Log Name/Comment	Wellbore
17.00	1243.00	Generic gyro - continuous (Standard)	MS ENERGY SERVICES GYRO SURVEYS <117-1243>	BADDING 2N-26HZ AWB
1243.00	7787.00	NaviTrak (MAGCORR,IFR)	BHI MWD+IFR SURVEYS 8 3/4" HOLE <1370-7787>	BADDING 2N-26HZ AWB
7787.00	12733.00	NaviTrak (MAGCORR,IFR)	BHI MWD+IFR SURVEYS 6 1/8" HOLE <7881-12733>	BADDING 2N-26HZ AWB
12733.00	12789.00	Blind Drilling (std)	Projection to bit	BADDING 2N-26HZ AWB



# Actual Wellpath Report

BADDING 2N-26HZ AWP

Page 7 of 7

REFERENCE WELLPATH IDENTIFICATION			
Operator	KERR-MCGEE OIL & GAS ONSHORE LP	Slot	SLOT#08 BADDING 2N-26HZ (350'FSL & 1953'FEL, SEC.26)
Area	COLORADO	Well	BADDING 2N-26HZ
Field	WELD COUNTY (KERR MCGEE)	Wellbore	BADDING 2N-26HZ AWP
Facility	SEC.26-T2N-R66W		

WELLPATH COMMENTS				
MD [ft]	Inclination [°]	Azimuth [°]	TVD [ft]	Comment
17.00	0.000	227.670	17.00	Tie-On
117.00	0.490	227.670	117.00	Begin GYRO Surveys
1243.00	0.170	84.100	1242.97	Tie-Into GYRO Surveys
1370.00	0.130	279.170	1369.97	Begin BHI MWD+IFR Surveys
7824.00	86.962	1.290	7410.98	7" Casing Point
12733.00	90.000	355.870	7409.07	Last BHI MWD+IFR Surveys
12789.00	90.000	355.870	7409.07	Projection to Bit