



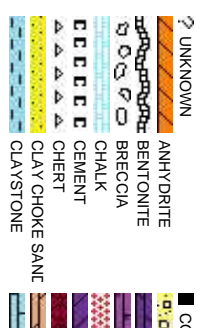
Scale: 5" / 100'
Measured Depth Log

Well Name	BADDING 2N-26HZ		
Location	SEC.26-T2N-R66W		
State	COLORADO	County	WELD
Country	USA	Rig Number	XTREME 8
API Number	05-123-38407	AFE #	2086545
Region	DJ BASIN	Field	WATTENBERG
Spud Date	2/11/2014	Drilling Completed	2/18/2014
Surface Coordinates	350' FSL, 1953' FEL LAT 40.102987 LON -104.74185		
Bottom Hole Coordinates	200' FSL, 1725' FEL LAT 40.117035 LON -104.741146		
Ground Elevation	5113	K.B. Elevation	5146'
Logged Interval	6897'	To	12789'
Formation	NIOBRARA	Total Depth	5893'
Type of Drilling Fluid	FW LSND		

Company ANADARKO PE
Address 1099 18th, Suite

Name JOSH GARRET
Company ANADARKO
Address 1099 18th, Suite

LOGGERS



Bit Data

Bit #: 1
Type: BHI
Size: 8.75
Depth In: 3.001 '
S/N: 703886

ROP
ROF
GAMMA

Total Gas & Chromatograph

GAS
C1
C2
C3
C4

Columbine Logging Two Man Rigged
Up 16:00hrs02/12/2014 With Bloodhound
Unit # 0650
Logging Began @ 15:12hrs02/13/2014
at 6896' MD

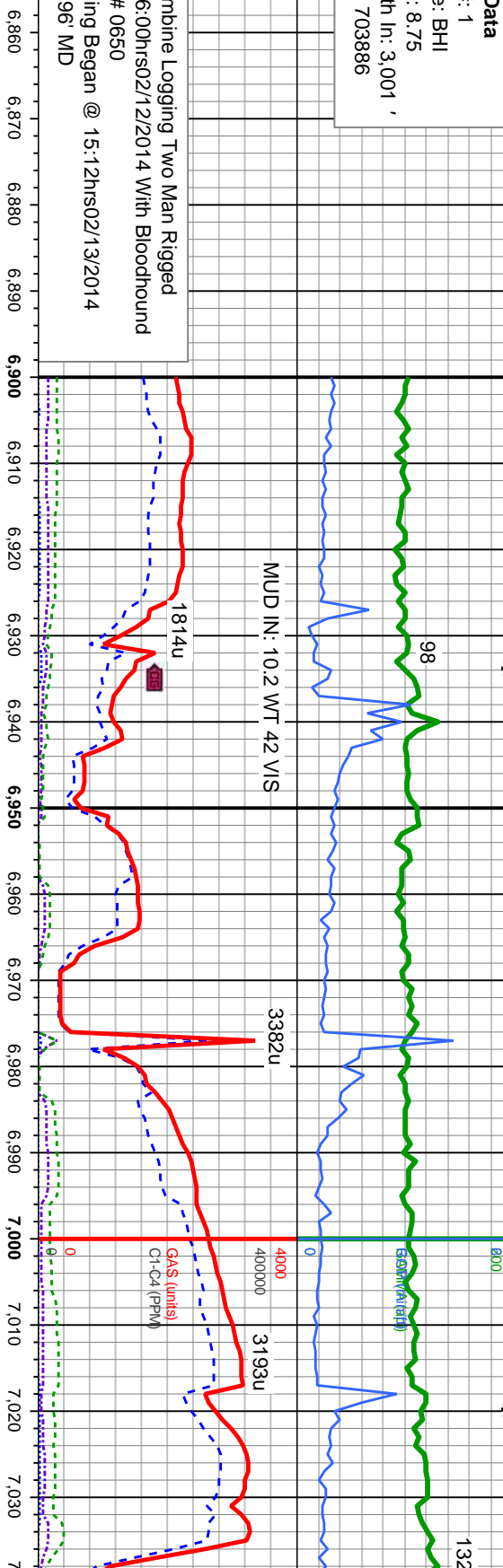
Depth Labels

% Lith

Well Bore
TVD

Oil Show

Images



MD: 6928 '
TVD: 6865.22 '
Inclination: 3.37 °
Azimuth: 352.14 °
VS: -462.79 '

MD: 6,970 '
TVD: 6,907.05 '
Inclination: 6.81 °
Azimuth: 352.9 °
VS: -459.09 '

MD: 7013 '
TVD: 6949.54 '
Inclination: 10.71 °
Azimuth: 353.65 °
VS: -452.58 '

Acetone was used as the cutting agent with the dimple filled to the rim.
The ratings are based on 7 descriptors:
None, Slight trace, Trace, Fair, Moderate, Good, and Excellent. The descriptor used is based on the loggers observations and best judgment of brilliance, color and longevity of the cut.

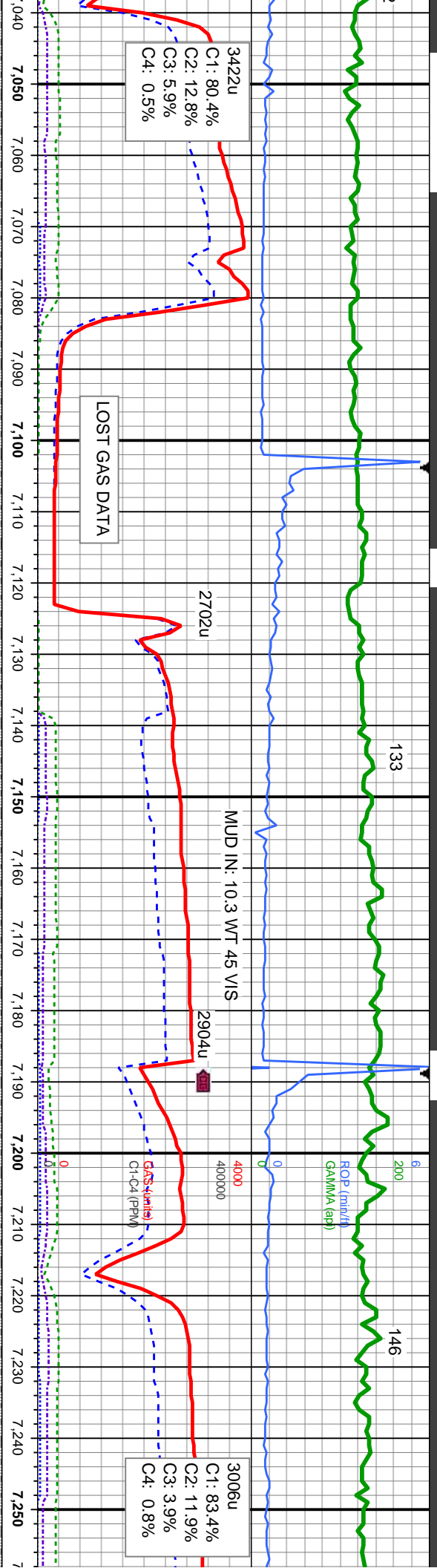
SLTY SH: dk-med gy-gy brn, sb
ply-sb blkly, med sft-frm, mod fri-sl
brt, v sl calc, v silty, slow string
milky bl cut, dull gn ring

SLTY SH: dk-med gy-gy brn, sb
ply-sb blkly, med sft-frm, mod fri-sl
brt, v sl calc, v silty, slow string
milky bl cut, dull gn ring

SLTY SH: dk-med gy-gy brn, sb
ply-sb blkly, med sft-frm, mod fri-sl
brt, v sl calc, v silty, slow string
milky bl cut, dull gn ring

TH
F
H
S
E





MD: 7056 '
TVD: 6991.51 '
Inclination: 14.29 °
Azimuth: 355.77 °
VS: -443.31 '

MD: 7098 '
TVD: 7031.83 '
Inclination: 18.23 °
Azimuth: 358.34 °
VS: -431.57 '

MD: 7141 '
TVD: 7072.19 '
Inclination: 22.04 °
Azimuth: 357.75 °
VS: -416.78 '

MD: 7184 '
TVD: 7111.44 '
Inclination: 26.15 °
Azimuth: 357.35 °
VS: -399.24 '

MD: 7226 '
TVD: 7148.46 '
Inclination: 30.14 °
Azimuth: 357.00 °
VS: -379.45 '

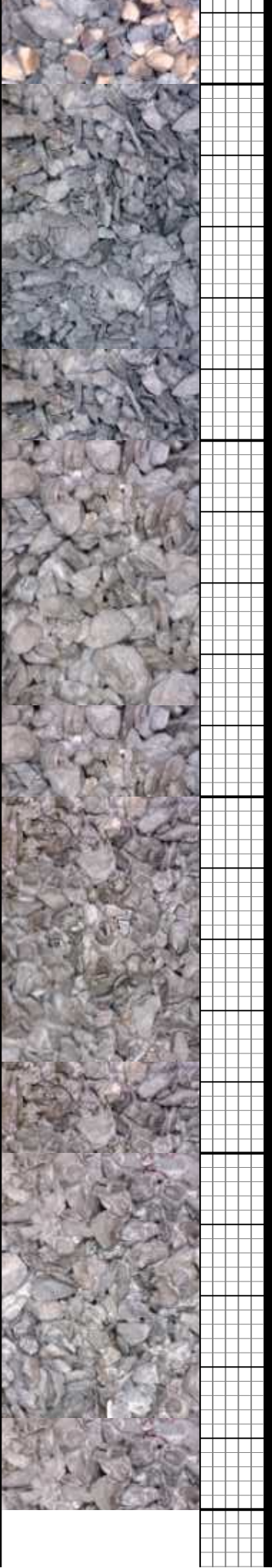
TVD SCALE CHANGE

SLTY SH: dk-med gy-gy brn, sb
pity-sb blk, med sft-firm, mod
fri-sl brit, v sl calc, v silty, slow
sting milky bl cut, dull gn ring

SLTY SH: dk-med gy-gy brn, sb
pity-sb blk, med sft-firm, mod
fri-sl brit, v sl calc, v silty, slow
sting milky bl cut, dull gn ring

SLTY SH: dk-med gy-gy brn, sb
pity-sb blk, med sft-firm, mod
fri-sl brit, v sl calc, v silty, slow
sting milky bl cut, dull gn ring

SLTY SH: dk-med gy-gy brn, sb
pity-sb blk, med sft-firm, mod fri-sl
brit, v sl calc, tr bent, slow sting
milky bl cut, dull gn ring



[illegible]

120

ROP SCALE CHANGE

02/15-16/2014

117

MUD IN: 10.1 WT 44 VIS

4166u

5500
550000

MUD IN: 10.1 WT 45 VIS

Landed curve @7836' MD
02/15/14 @ 04:40 MST

MUD IN: 9.7 WT 55 VIS

3716u

2817u
C1: 83.0%
C2: 10.3%
C3: 4.9%
C4: 1.8%

Resumed Lateral
02/17/14 @03:00MST

7,700 7,710 7,720 7,730 7,740 7,750 7,760 7,770 7,780 7,790 7,800 7,810 7,820 7,830 7,840 7,850 7,860 7,870 7,880 7,890 7,900 7,910 7,920

Niobrara C

Chalk:

7,712' MD

7,400' TVD

2'

9.23 °

3 °

MD: 7738'

TVD: 7403.85'

Inclination: 82.22 °

Azimuth: 0.92 °

VS: 41.09'

MD: 7787'

TVD: 7408.78'

Inclination: 86.23 °

Azimuth: 1.31 °

VS: 89.82'

MD: 7836'

TVD: 7409.61'

Inclination: 89.95 °

Azimuth: 1.31 °

VS: 138.76'

MD: 7,881'

TVD: 7,413.47'

Inclination: 88.09 °

Azimuth: 1.26 °

VS: 189.26'

CHK:lt-med gy, blkly, sft, v calc,MRLST:

med-dk gy, sb blkly, med sft-fm, silty
tex, v calc; tr bent,fast string milky bl
cut, bri bl ring

CHK:lt-med gy, blkly, sft, v calc,MRLST:

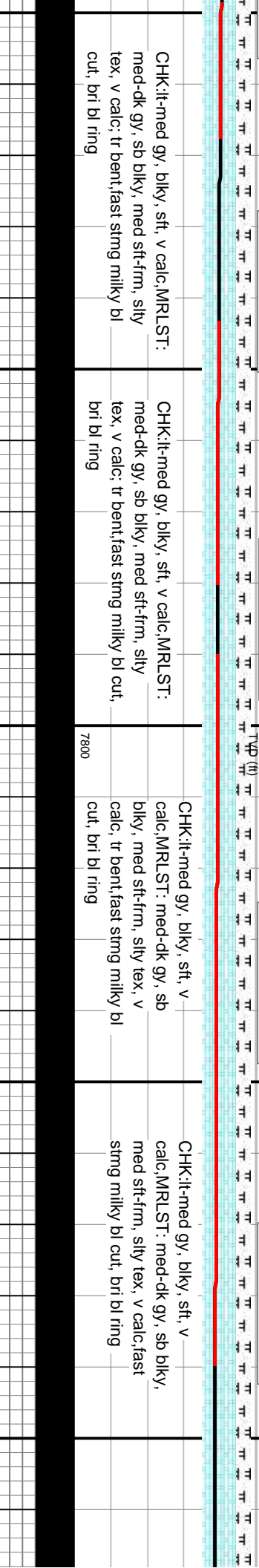
med-dk gy, sb blkly, med sft-fm, silty
tex, v calc; tr bent,fast string milky bl cut,
bri bl ring

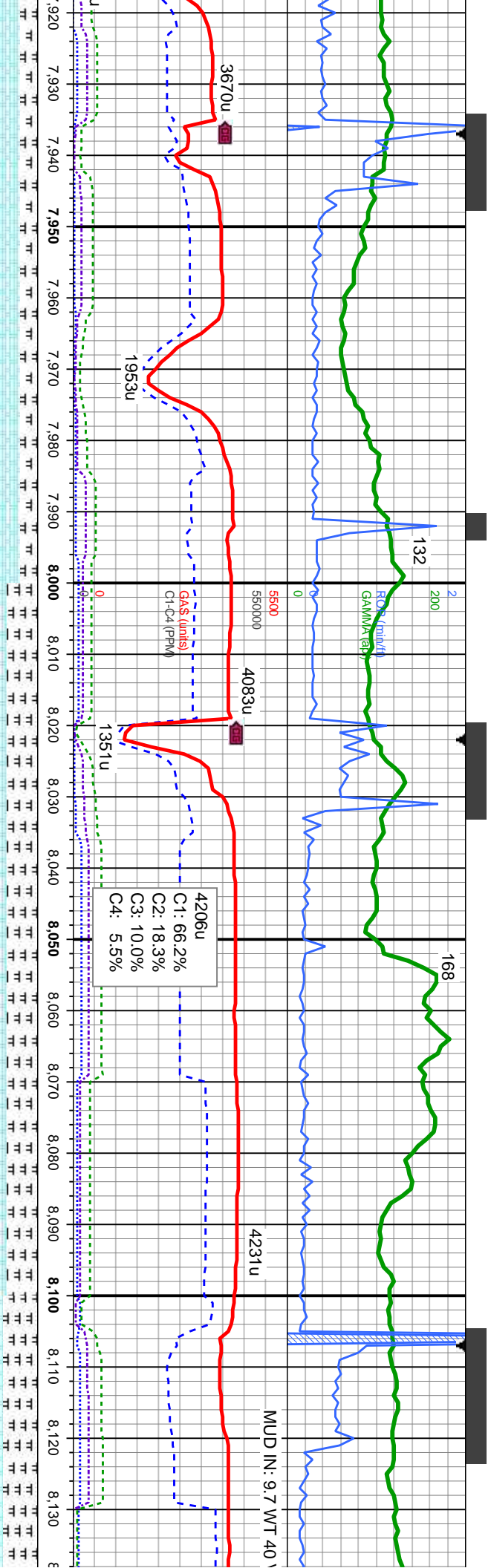
CHK:lt-med gy, blkly, sft, v

calc,MRLST: med-dk gy, sb
blkly, med sft-fm, silty tex, v
calc, tr bent,fast string milky bl
cut, bri bl ring

CHK:lt-med gy, blkly, sft, v

calc,MRLST: med-dk gy, sb blkly,
med sft-fm, silty tex, v calc,fast
string milky bl cut, bri bl ring



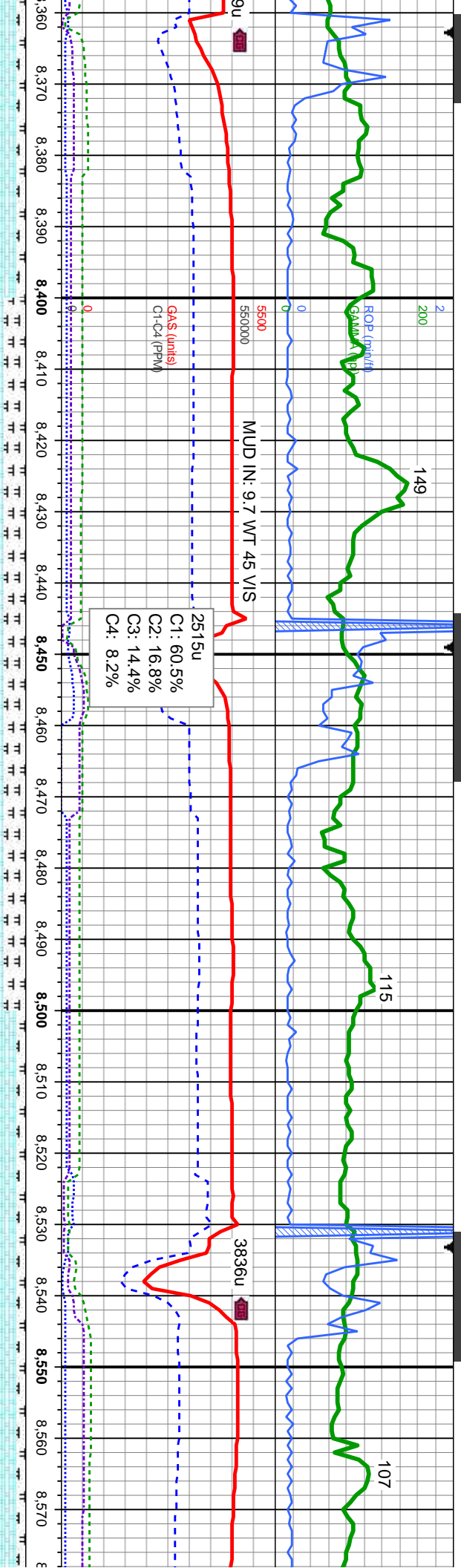


CHK:it-med gy, blkly, sft, v
calc,MRLST: med-dk gy, sb blkly,
med sft-fm, silty tex, v calc,fast
stmg milky bl cut, bri bl ring

CHK:it-med gy, blkly, sft, v
calc,MRLST: med-dk gy, sb blkly,
med sft-fm, silty tex, v calc,fast
stmg milky bl cut, bri bl ring

CHK:it-
calc,MF
med sft
stmg m





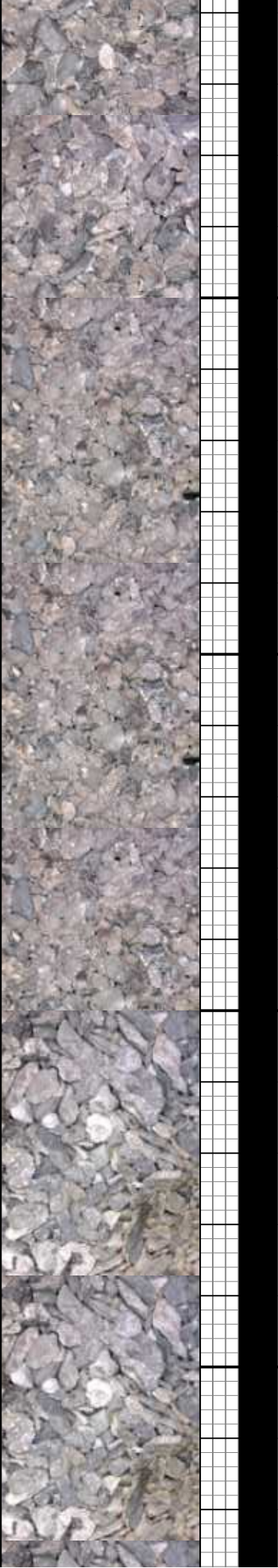
MD: 8,392 '
TVD: 7,414.3 '
Inclination: 91.78 °
Azimuth: 0.88 °
VS: 699.86 '

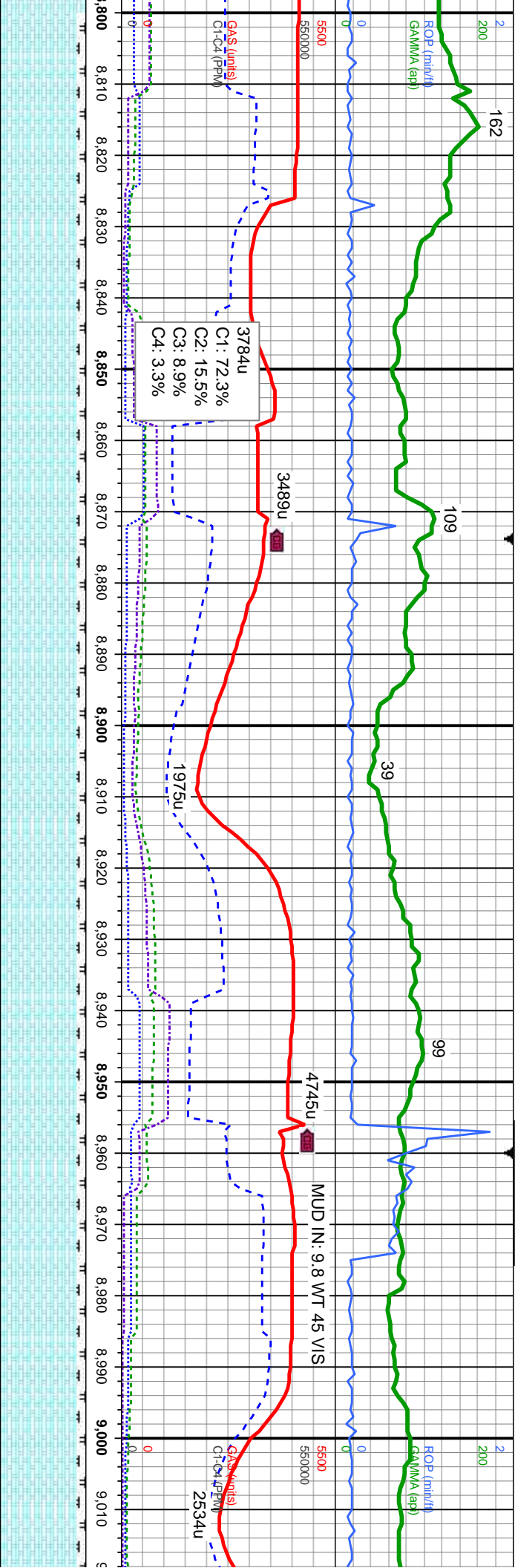
2515u
C1: 60.5%
C2: 16.8%
C3: 14.4%
C4: 8.2%

MD: 8,478 '
TVD: 7,412.01 '
Inclination: 91.26 °
Azimuth: 359.31 °
VS: 785.82 '

MD: 8,563 '
TVD: 7,410.4 '
Inclination: 90.92 °
Azimuth: 359.61 °
VS: 870.81 '

sb blkly, calc,fast	CHK:lt-med gy, blkly, sft, v calc,MRLST: med-dk gy, sb blkly, med sft-frm, silty tex, v calc,fast stimg milky bl cut, bri bl ring	CHK:lt-med gy, blkly, sft, v calc,MRLST: med-dk gy, sb blkly, med sft-frm, silty tex, v calc,fast stimg milky bl cut, bri bl ring
------------------------	--	--





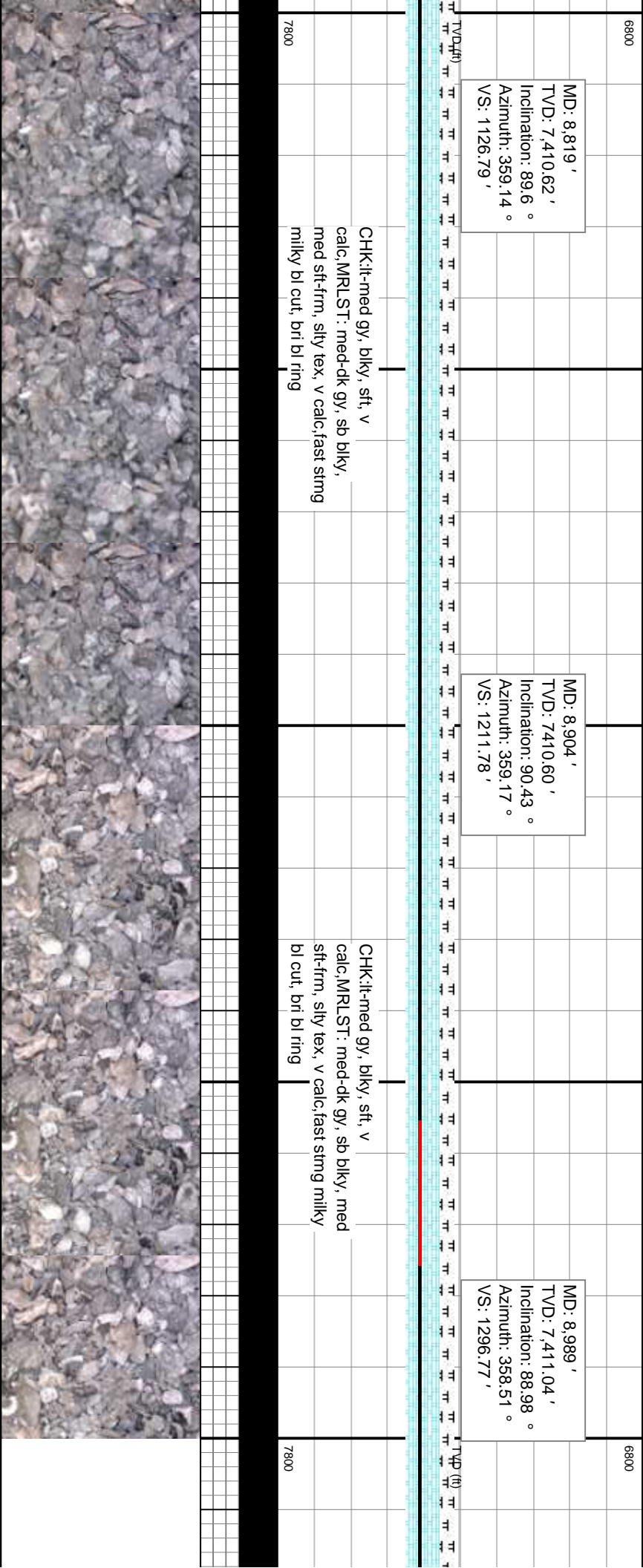
MD: 8,819 '
TVD: 7,410.62 '
Inclination: 89.6 °
Azimuth: 359.14 °
VS: 1126.79 '

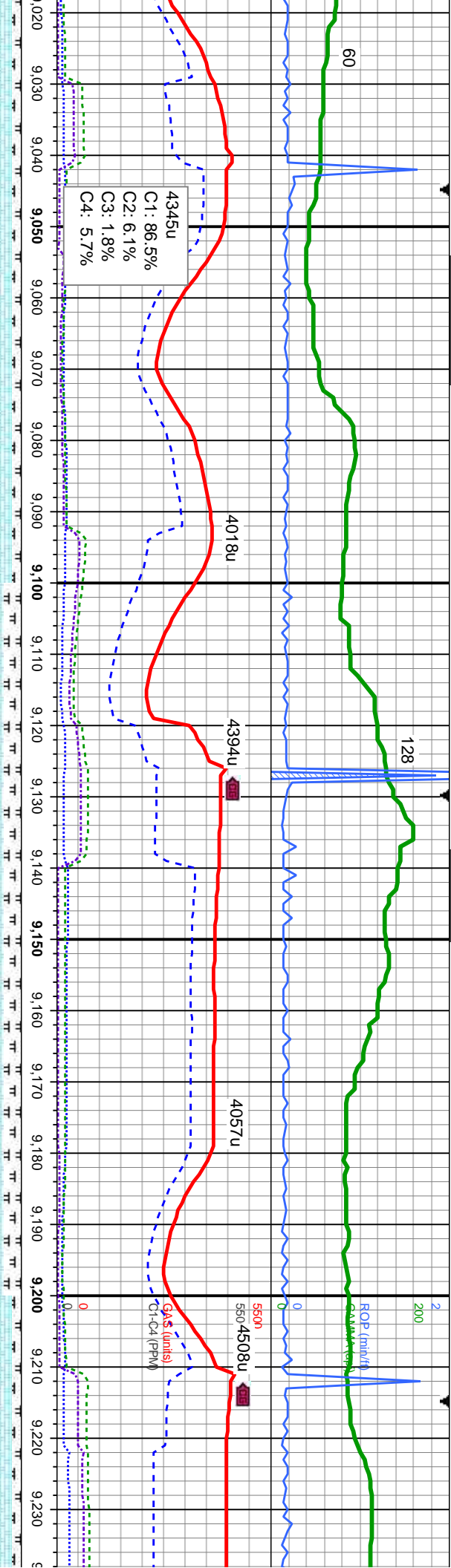
MD: 8,904 '
TVD: 7,410.60 '
Inclination: 90.43 °
Azimuth: 359.17 °
VS: 1211.78 '

MD: 8,989 '
TVD: 7,411.04 '
Inclination: 88.98 °
Azimuth: 358.51 °
VS: 1296.77 '

CHK:it-med gy, blk, sft, v
calc,MRLST: med-dk gy, sb blk,
med sft-firm, silty tex, v calc,fast string
milky bl cut, bri bl ring

CHK:it-med gy, blk, sft, v
calc,MRLST: med-dk gy, sb blk, med
sft-firm, silty tex, v calc,fast string milky
bl cut, bri bl ring



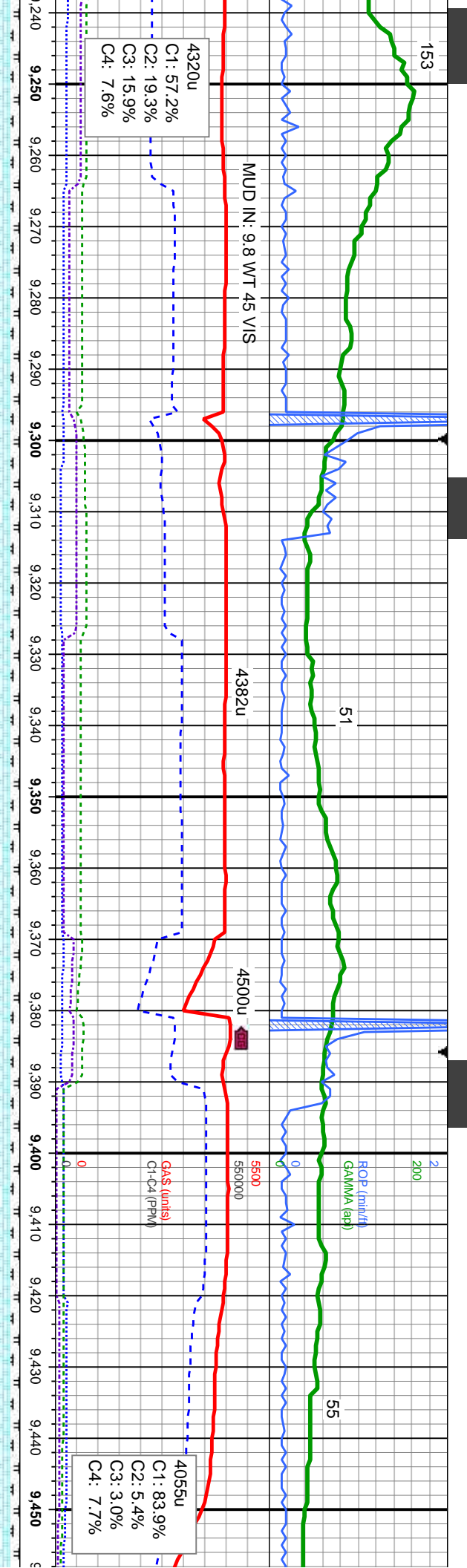


CHK:lt-med gy, blk, sft, v
calc,MRLST: med-dk gy, sb blk,
med sft-fm, silty tex, v calc,fast stmg
milky bl cut, bri bl ring

CHK:lt-med gy, blk, sft, v
calc,MRLST: med-dk gy, sb blk,
med sft-fm, silty tex, v calc,fast stmg
milky bl cut, bri bl ring

CHK:lt-
calc,MRL
sft-fm,
bl cut, l





MD: 9245 '
TVD: 7408.16 '
Inclination: 92.31 °
Azimuth: 358.43 °
VS: 1552.66 '

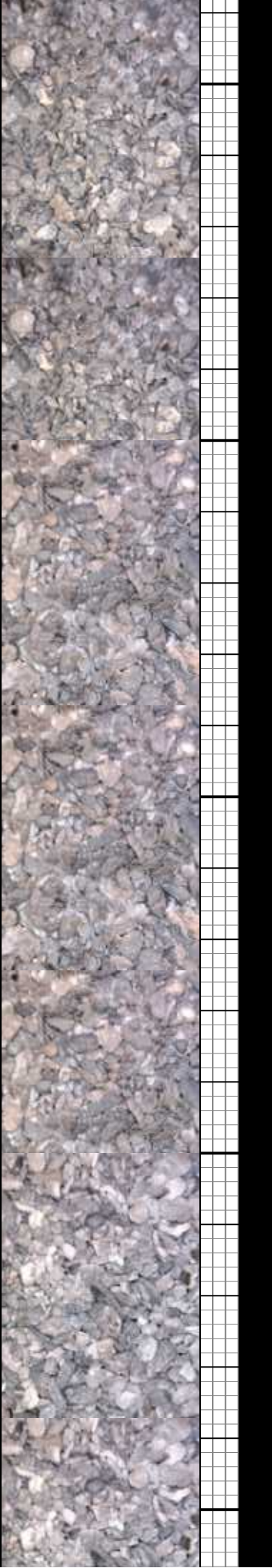
MD: 9330 '
TVD: 7405.78 '
Inclination: 90.89 °
Azimuth: 358.90 °
VS: 1637.62 '

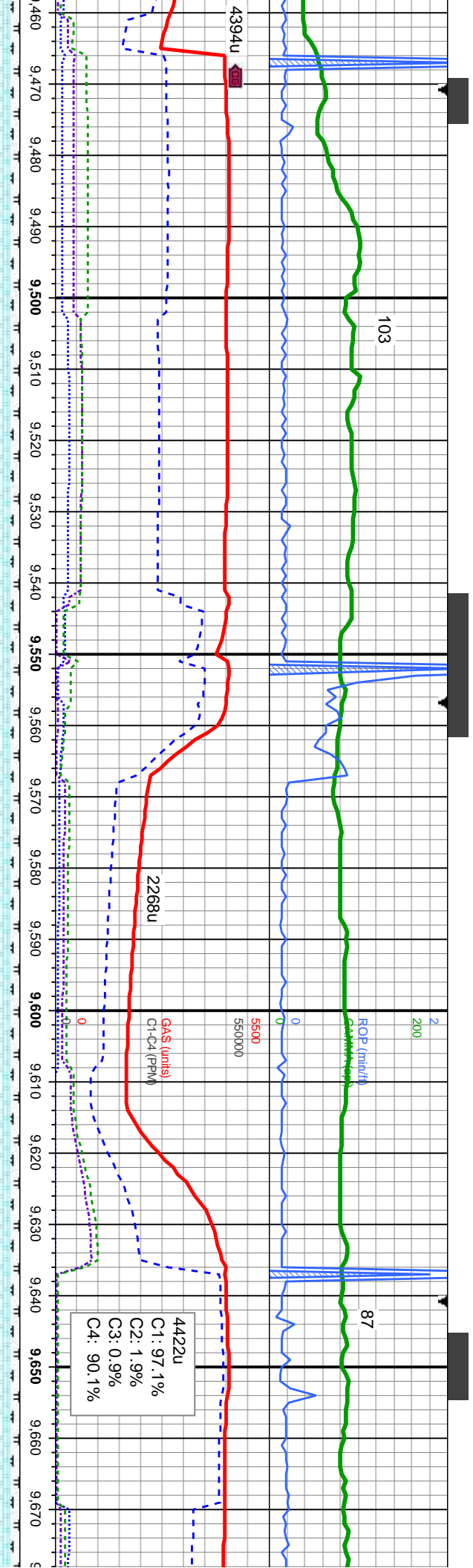
MD: 9415 '
TVD: 7405.24 '
Inclination: 89.84 °
Azimuth: 358.32 °
VS: 1722.60 '

med gy, blkly, sft, v
RLST: med-dk gy, sb blkly, med
sily tex, v calc, fast stmg milky
prt bl ring

CHK:lt-med gy, sb blkly, tr sb pily, sft,
mot tex, v calc, MRLST: med-dk gy, sb
blkly, med sft-fm, sily tex, v calc, fast
stmg milky bl cut, bri bl ring

CHK:lt-med gy, sb blkly, tr
mot tex, v calc, MRLST: r
blkly, med sft-fm, sily tex,
stmg milky bl cut, bri bl rin





MD: 9500 '
TVD: 7404.34 '
Inclination: 91.38 °
Azimuth: 358.78 °
VS: 1807.57 '

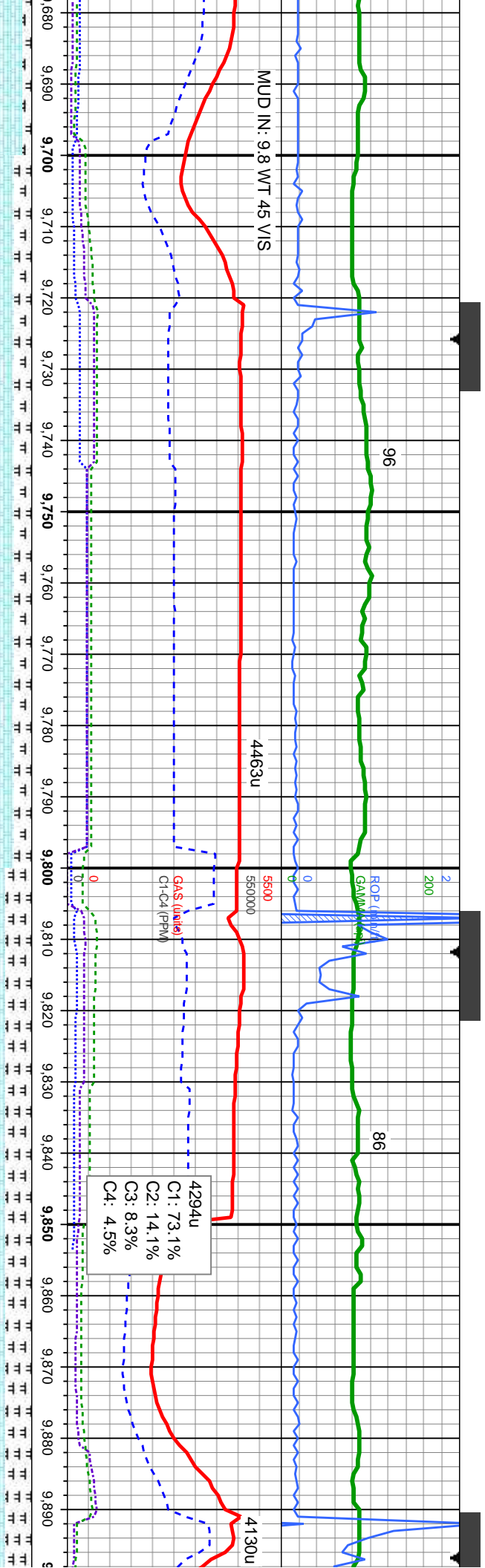
MD: 9586 '
TVD: 7403.23 '
Inclination: 90.09 °
Azimuth: 358.73 °
VS: 1893.56 '

4422u
C1: 97.1%
C2: 1.9%
C3: 0.9%
C4: 90.1%

sb pily, sft,	CHK:lt-med gy, sb blk, tr sb pily, sft,
med-dk gy, sb	mot tex, v calc, MRLST: med-dk gy, sb
v calc,fast	blk, med sft-fm, silty tex, v calc,fast
g	stmg milky bl cut, bri bl ring

7800

MD: 9,671 '
TVD: 7,403.38 '
Inclination: 89.72 °
Azimuth: 358.64 °
VS: 1978.54 '

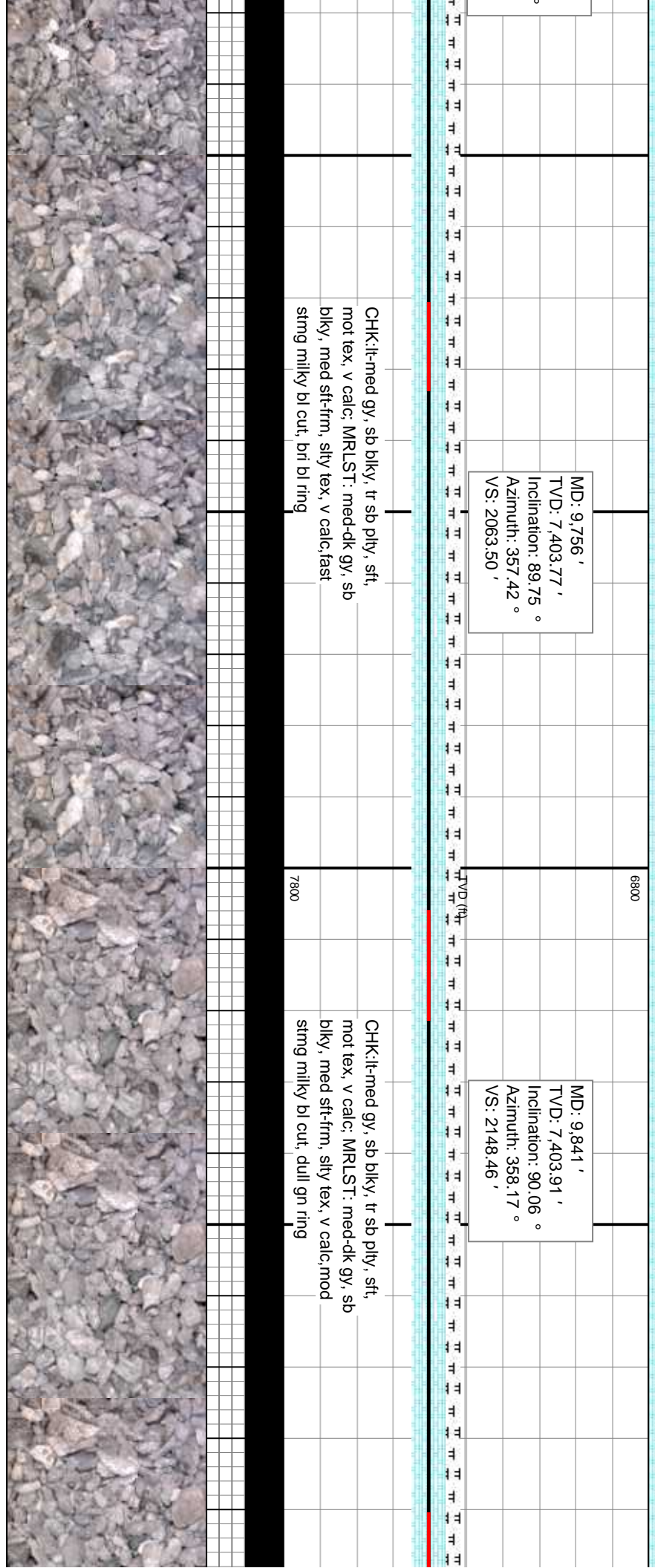


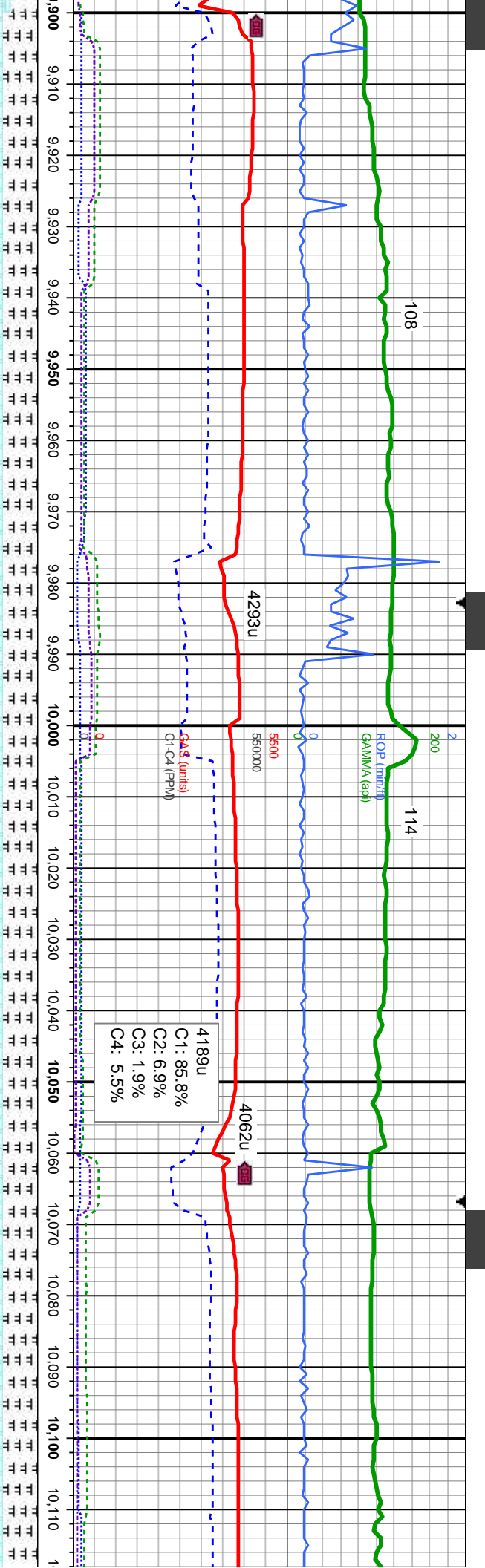
MD: 9,756.1'
TVD: 7,403.77'
Inclination: 89.75°
Azimuth: 357.42°
VS: 2063.50'

C1: 73.1%
C2: 14.1%
C3: 8.3%
C4: 4.5%

CHK:lt-med gy, sb blk, tr sb pty, sft, mot tex, v calc, MRLST: med-dk gy, sb blk, med sft-fm, silty tex, v calc, fast string milky bl cut, brt bl ring

CHK:lt-med gy, sb blk, tr sb pty, sft, mot tex, v calc, MRLST: med-dk gy, sb blk, med sft-fm, silty tex, v calc, mod string milky bl cut, dull gn ring





MD: 9,927 '
TVD: 7,403.33 '
Inclination: 90.71 °
Azimuth: 359.49 °
VS: 2234.45 '

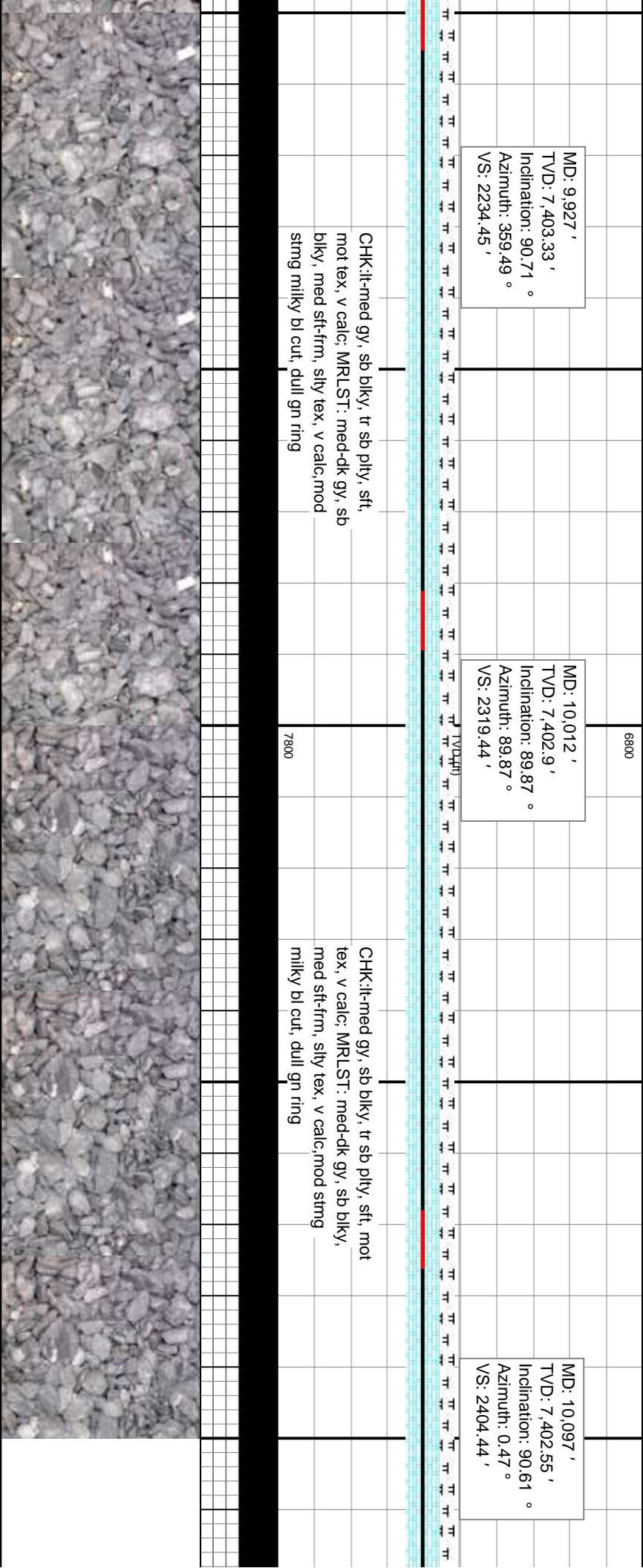
MD: 10,012 '
TVD: 7,402.9 '
Inclination: 89.87 °
Azimuth: 89.87 °
VS: 2319.44 '

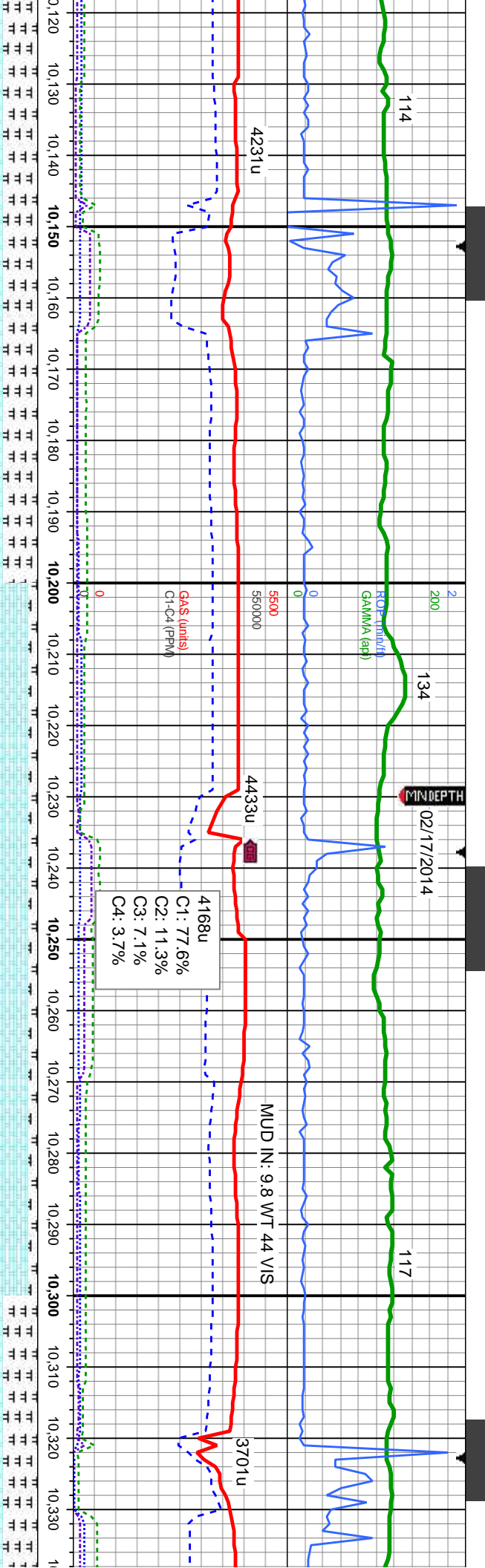
4189u
C1: 85.8%
C2: 6.9%
C3: 1.9%
C4: 5.5%

MD: 10,097 '
TVD: 7,402.55 '
Inclination: 90.61 °
Azimuth: 0.47 °
VS: 2404.44 '

CHK:lt-med gy, sb blk, tr sb pty, sft, mot tex, v calc; MRLST: med-dk gy, sb blk, med sft-fm, silty tex, v calc, mod stmg milky bl cut, dull gn ring

CHK:lt-med gy, sb blk, tr sb pty, sft, mot tex, v calc; MRLST: med-dk gy, sb blk, med sft-fm, silty tex, v calc, mod stmg milky bl cut, dull gn ring





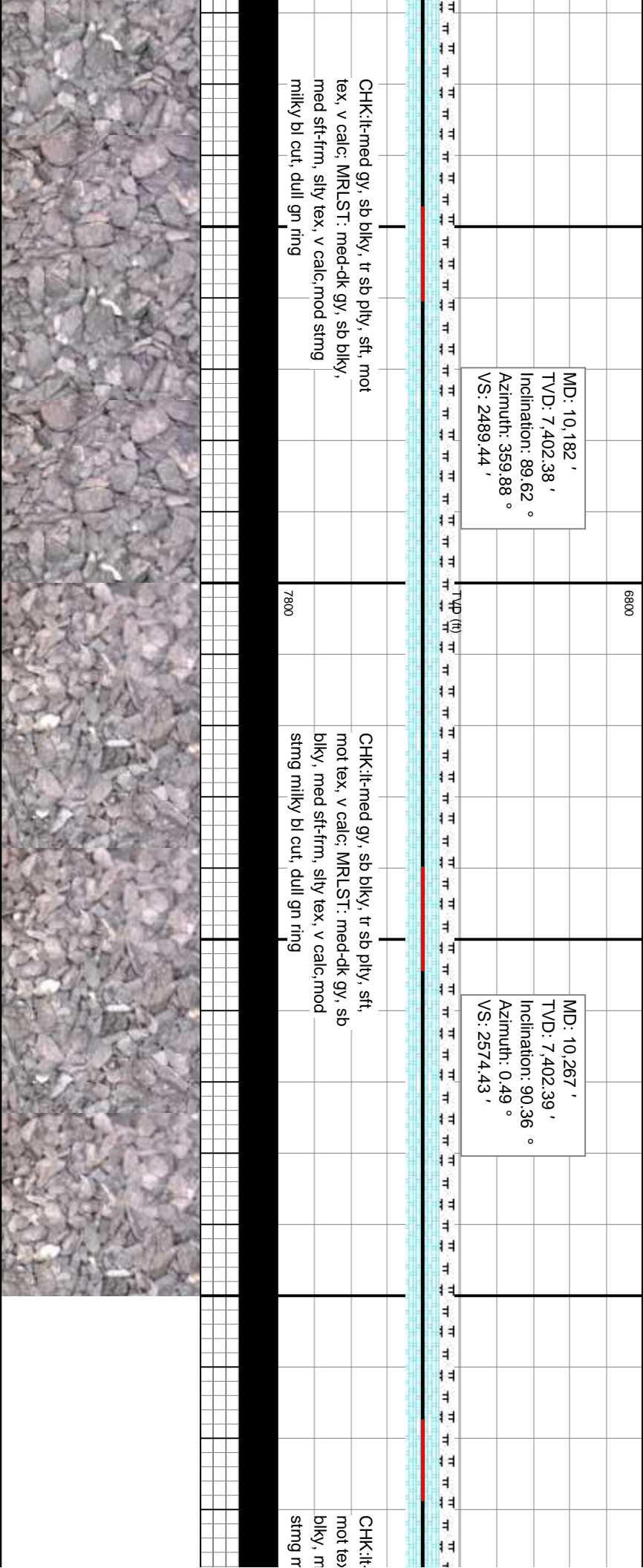
MD: 10,182 '
TVD: 7,402.38 '
Inclination: 89.62 °
Azimuth: 359.88 °
VS: 2489.44 '

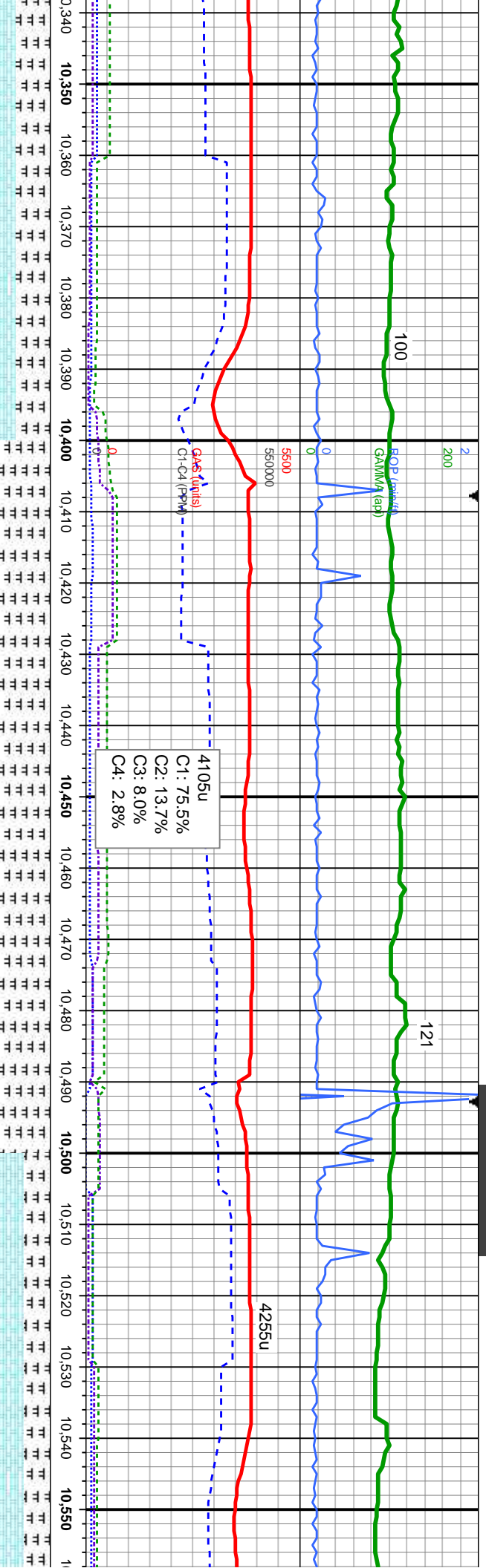
MD: 10,267 '
TVD: 7,402.39 '
Inclination: 90.36 °
Azimuth: 0.49 °
VS: 2574.43 '

CHK:lt-med gy, sb blkly, tr sb pily, sft, mot
tex, v calc, MRLST: med-dk gy, sb blkly,
med sft-frm, silty tex, v calc,mod string
milky bl cut, dull gn ring

CHK:lt-med gy, sb blkly, tr sb pily, sft,
mot tex, v calc, MRLST: med-dk gy, sb
blkly, med sft-frm, silty tex, v calc,mod
string milky bl cut, dull gn ring

CHK:lt-
mot tex
blkly, m
string r





MD: 10,352 '
TVD: 7,402.92 '
Inclination: 88.92 °
Azimuth: 0.26 °
VS: 2659.42 '

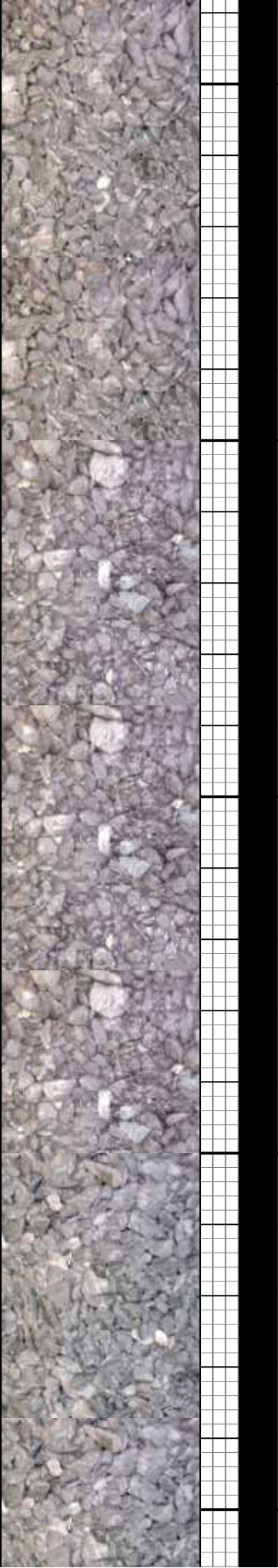
MD: 10,438 '
TVD: 7,406.6 '
Inclination: 90.12 °
Azimuth: 1.03 °
VS: 2739.82 '

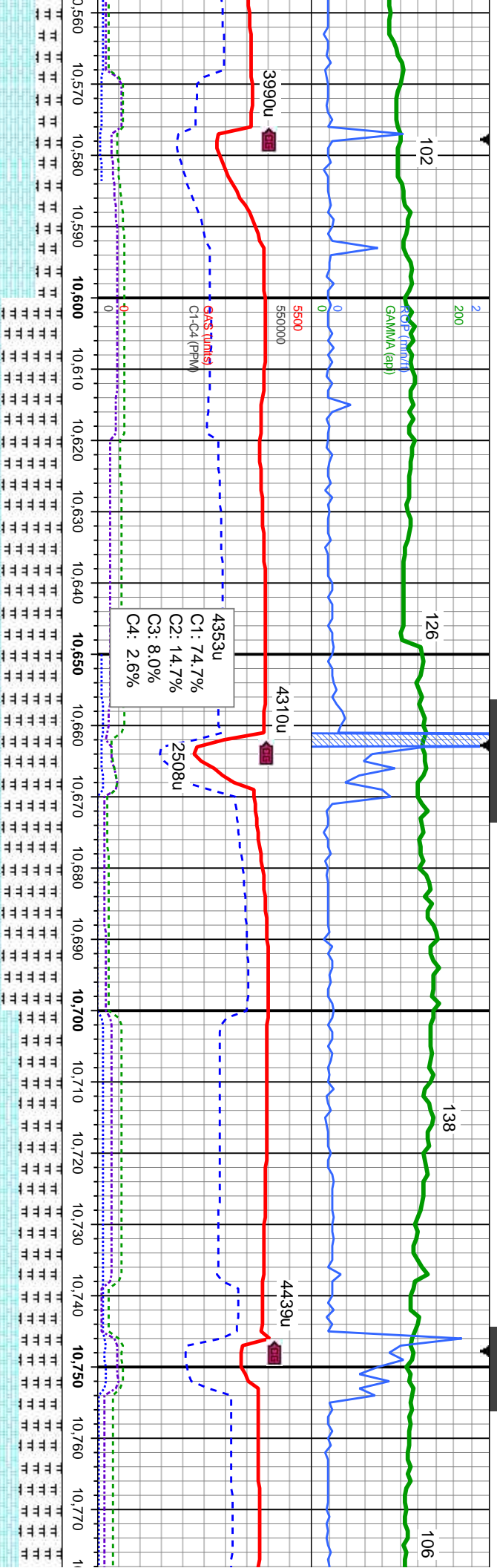
MD: 10,523 '
TVD: 7,407.35 '
Inclination: 88.68 °
Azimuth: 0.67 °
VS: 2824.79 '

med gy, sb blk, tr sb pty, sft, v calc; MRLST: med-dk gy, sb med sft-frm, silty tex, v calc; MRLST: med-dk gy, sb blk, tr sb pty, sft, mot tex, v calc; mod silty bl cut, dull gn ring

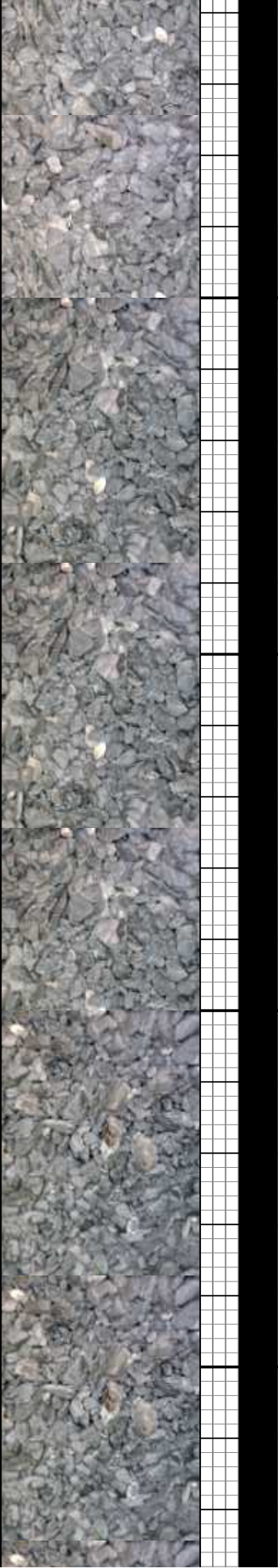
MRLST: med-dk gy, sb blk, med sft-frm, silty tex, v calc; CHK:lt-med gy, sb blk, tr sb pty, sft, mot tex, v calc; mod string milky bl cut, dull gn ring

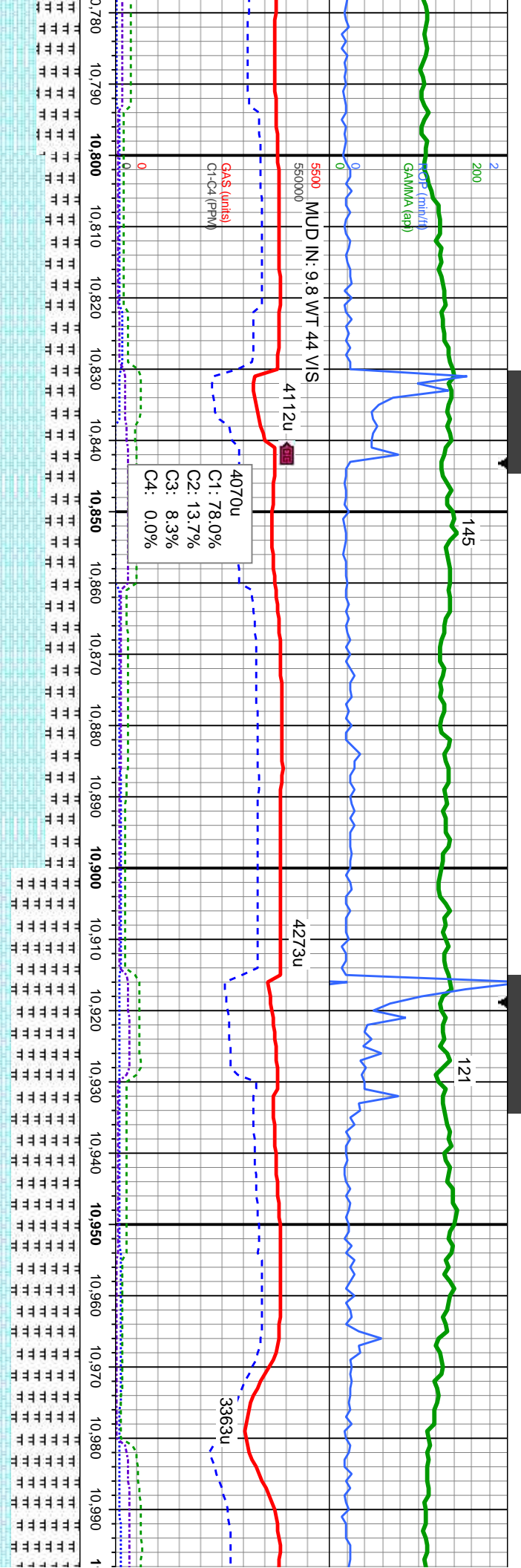
CHK:lt-med gy, sb blk, tr s tex, v calc; MRLST: med-d med sft-frm, silty tex, v calc milky bl cut, dull gn ring





sb ply, sft, mot	MRIST: med-dk gy, sb biky, med	MD: 10,608'	MD: 10,693'	MD: 10,777'
k gy, sb biky,	sft-fm, silty tex, v calc,CHK:lt-med gy, sb	TVD: 7,407.84'	TVD: 7,404.7'	TVD: 7,40'
mod sting	biky, tr sb ply, sft, mot tex, v calc,mod	Inclination: 90.49°	Inclination: 89.69°	Inclination: 1.0°
	sting milky bl cut, dull gn ring	Azimuth: 1.64°	Azimuth: 0.56°	Azimuth: 3079.0°
		VS: 2909.76'	VS: 2994.73'	VS: 3079.0°





8' : 90.24 °
7.75' : 90.24 °
71' : 90.24 °

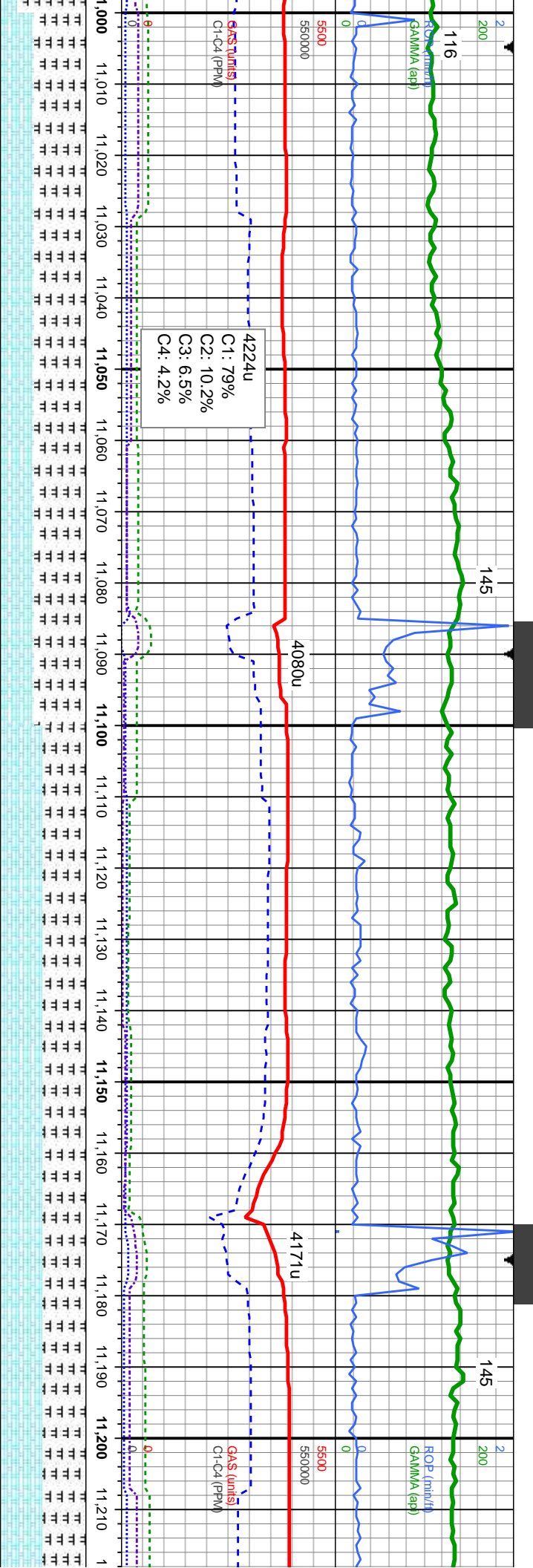
MD: 10,864' TVD: 7,407.05' Inclination: 90.7° Azimuth: 1.6° VS: 3165.67'

MD: 10,949' TVD: 7,407.6' Inclination: 88.55° Azimuth: 0.11° VS: 3250.64'

CHK:lt-med gy, sb blk, tr sb pty, sft, mot tex, v calc, MRLST: med-dk gy, sb blk, med sft-fm, silty tex, v calc, mod stmg milky bl cut, dull gn ring

MRLST: med-dk gy, sb blk, med sft-fm, silty tex, v calc, CHK:lt-med gy, sb blk, tr sb pty, sft, mot tex, v calc, mod stmg milky bl cut, dull gn ring





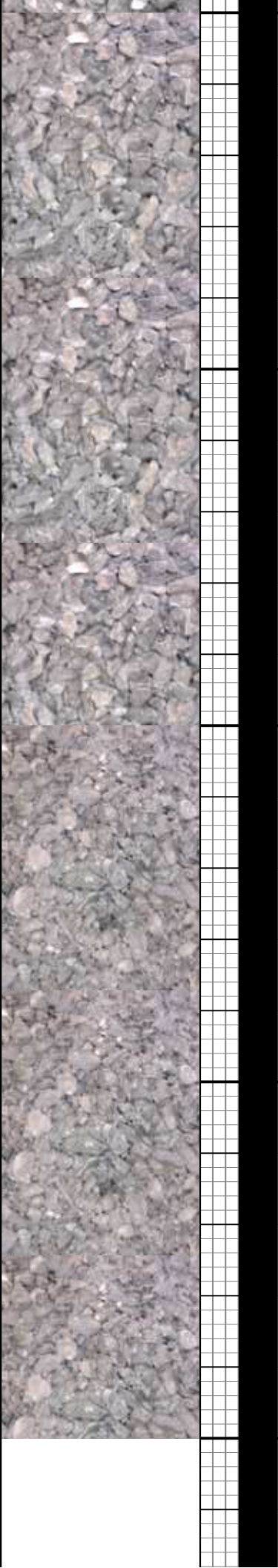
MD: 11,034 '
TVD: 7,408.18 '
Inclination: 90.67 °
Azimuth: 0.5 °
VS: 3335.63 '

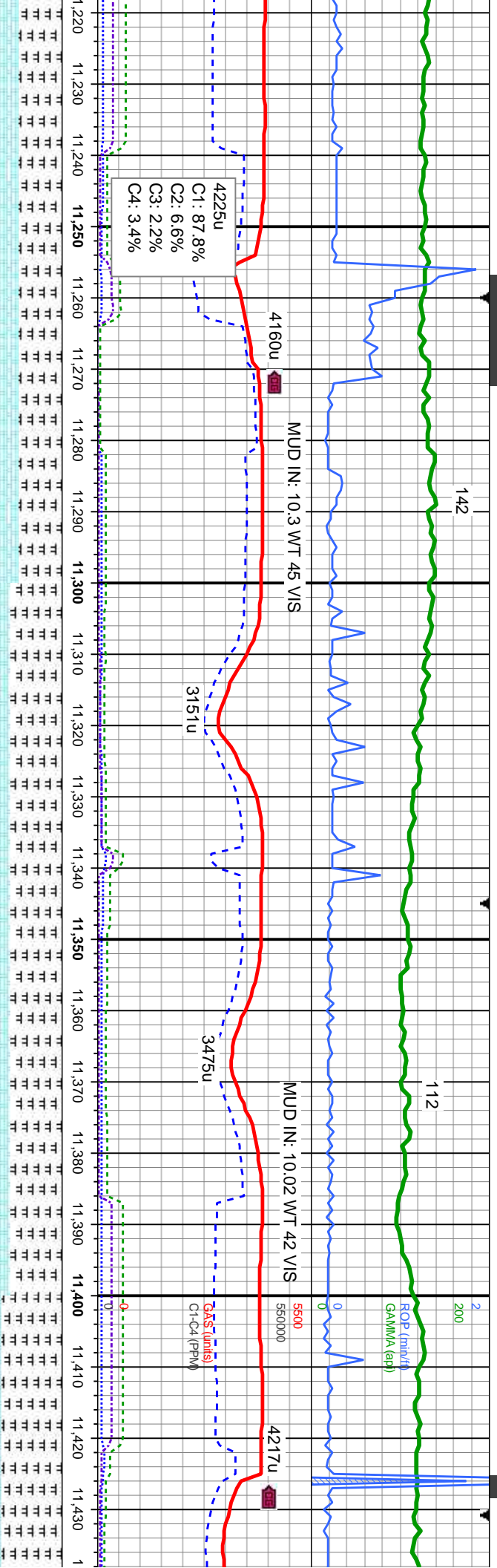
MD: 11,119 '
TVD: 7,408.08 '
Inclination: 89.47 °
Azimuth: 359.81 °
VS: 3420.62 '

MD: 11,205 '
TVD: 7,408.85 '
Inclination: 89.5 °
Azimuth: 0.91 °
VS: 3,506.61 '

MRLST: med-dk gy, sb blk, med sft-firm,
sily tex, v calc,CHK:lt-med gy, sb blk, tr
sb ply, sft, mot tex, v calc,mod string milky
bl cut, dull gn ring

MRLST: med-dk gy, sb blk, med sft-firm,
sily tex, v calc,CHK:lt-med gy, sb blk, tr
sb ply, sft, mot tex, v calc,mod string milky
bl cut, dull gn ring





MD: 11,290 '
TVD: 7410.66 '
Inclination: 88.06 °
Azimuth: 0.18 °
VS: 3591.58 '

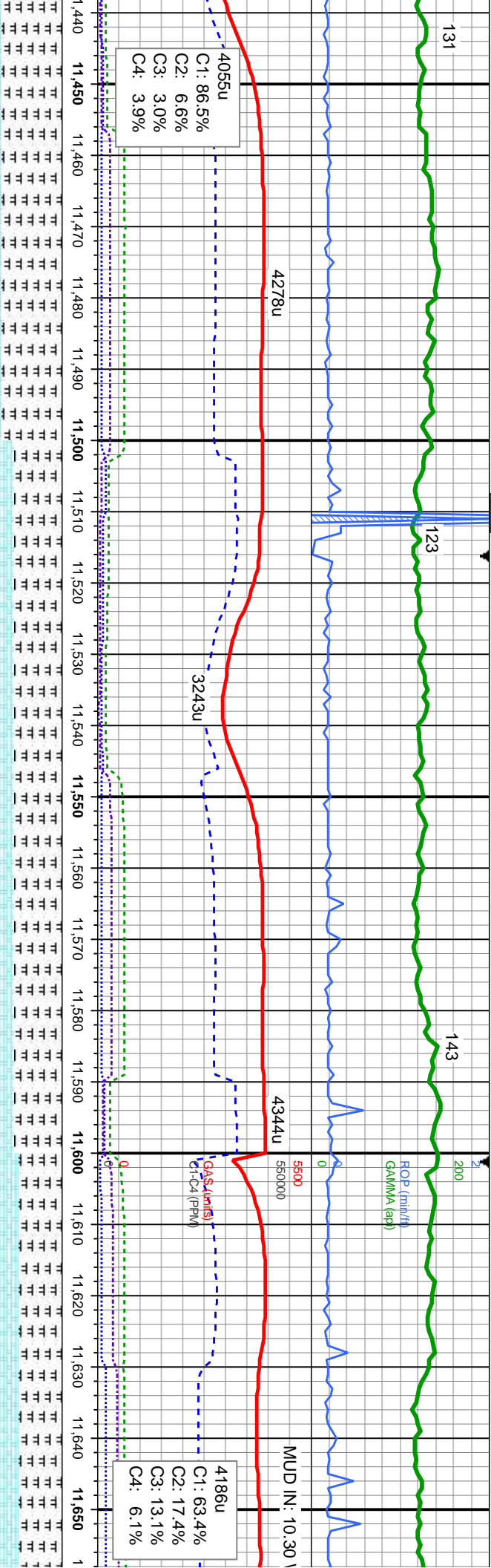
MD: 11,375 '
TVD: 7413.02 '
Inclination: 88.76 °
Azimuth: 0.8 °
VS: 3676.54 '

MRSLT: med-dk gy, sb blk, med sft-fr, silty tex, v calc,CHK:lt-med gy, sb blk, tr sb plty, sft, mot tex, v calc,mod string milky bl cut, dull gn ring

MRSLT: med-dk gy, sb blk, med sft-fr, silty tex, v calc,CHK:lt-med gy, sb blk, tr sb plty, sft, mot tex, v calc,mod string milky bl cut, dull gn ring

MRSLT: silty tex, v sb plty, s milky bl c





C1: 86.5%
C2: 6.6%
C3: 3.0%
C4: 3.9%

4186u
C1: 63.4%
C2: 17.4%
C3: 13.1%
C4: 6.1%

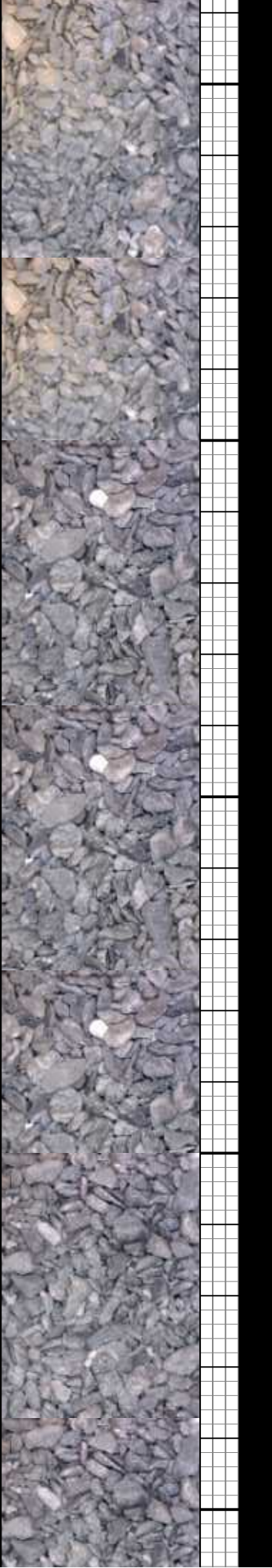
MD: 11,460 '
TVD: 7,414.24 '
Inclination: 89.59 °
Azimuth: 0.61 °
VS: 3761.51 '

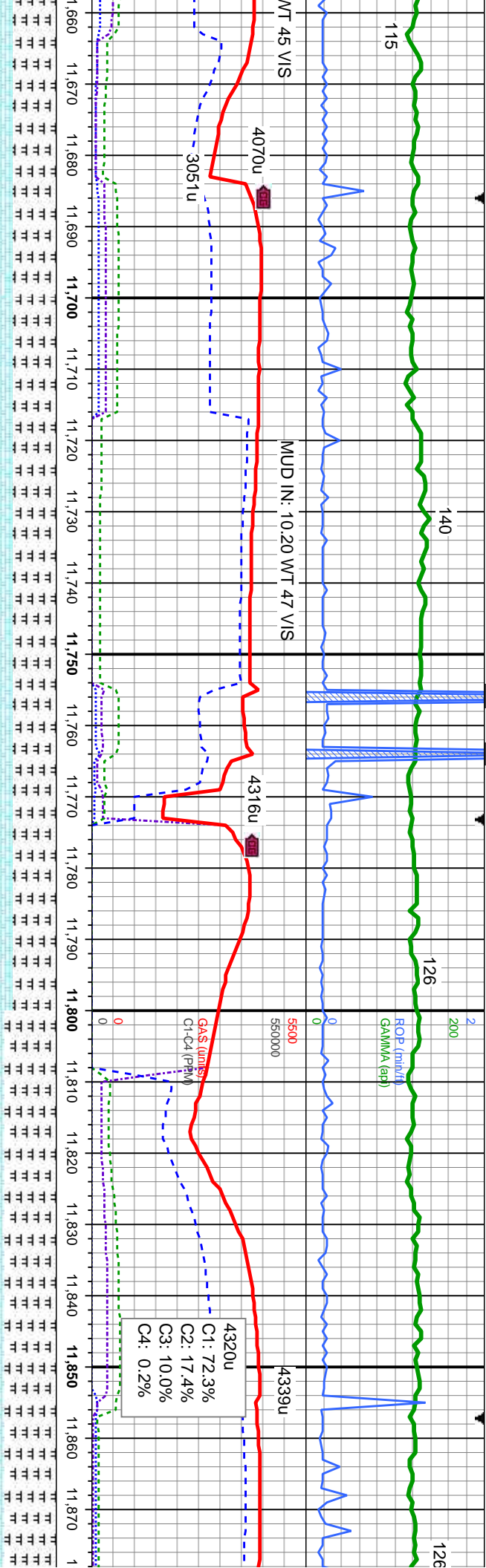
MD: 11,545 '
TVD: 7,414.39 '
Inclination: 90.21 °
Azimuth: 0.69 °
VS: 3846.50 '

MD: 11,630 '
TVD: 7,414.65 '
Inclination: 89.44 °
Azimuth: 0.12 °
VS: 3931.49 '

med-dk gy, sb blk, med sft-frm, calc,CHK:lt-med gy, sb blk, tr
ft, mot tex, v calc,mod stng
ut, dull gn ring

MRLST: med-dk gy, sb blk, med
sft-frm, silty tex, v calc,CHK:lt-med gy, sb
blk, tr sb plty, sft, mot tex, v calc,mod
stng milky bl cut, dull gn ring





MD: 11,716 '
TVD: 7,414.57 '
Inclination: 90.67 °
Azimuth: 1.06 °
VS: 4017.48 '

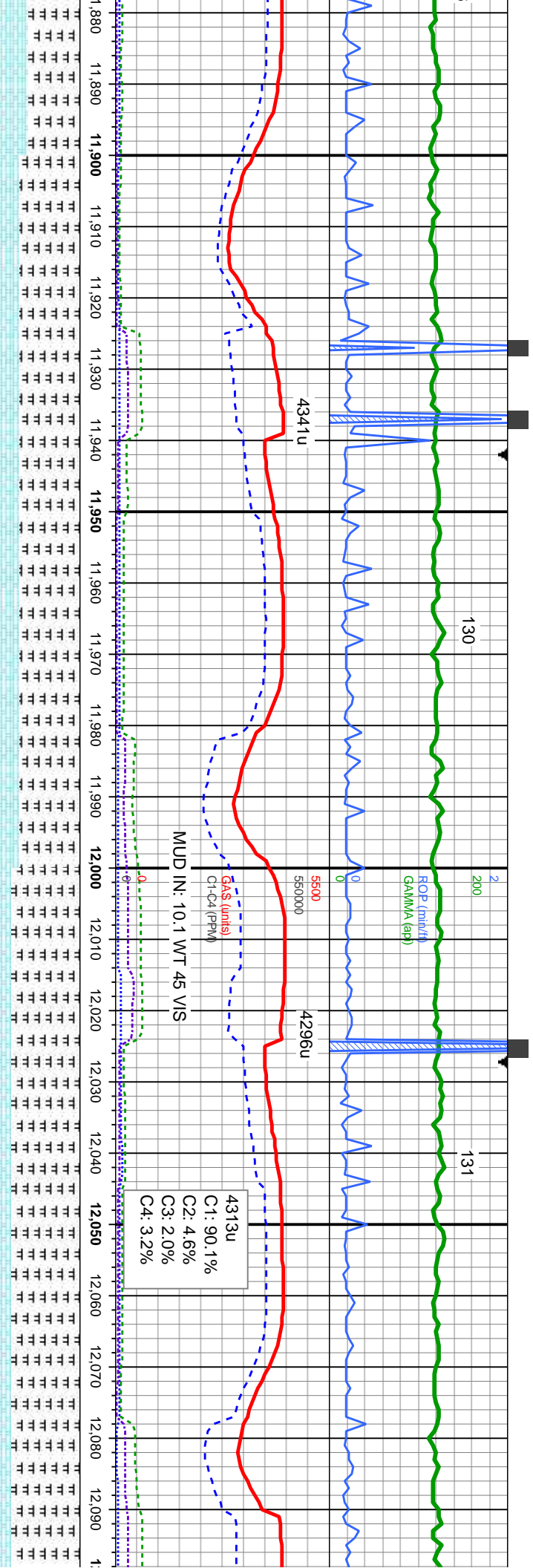
MD: 11,801 '
TVD: 7,413.87 '
Inclination: 90.27 °
Azimuth: 1.08 °
VS: 4102.45 '

4320u
C1: 72.3%
C2: 17.4%
C3: 10.0%
C4: 0.2%

med sft-frm, y, sb blkly, tr
mod stmg
MRLST: med-dk gy, sb blkly, med sft-frm, stly tex, v calc,CHK:lt-med gy, sb blkly, tr sb plty, sft, mot tex, v calc,mod stmg milky bl cut, dull gn ring

MRLST: med-dk gy, sb blkly, med sft-frm, stly tex, v calc,CHK:lt-med gy, sb blkly, tr sb plty, sft, mot tex, v calc,mod stmg milky bl cut, dull gn ring

MD: TVE
Incl: Azir
VS:



11,886' : 7,413.72' : 89.93°
Azimuth: 359.55°
4187.44'

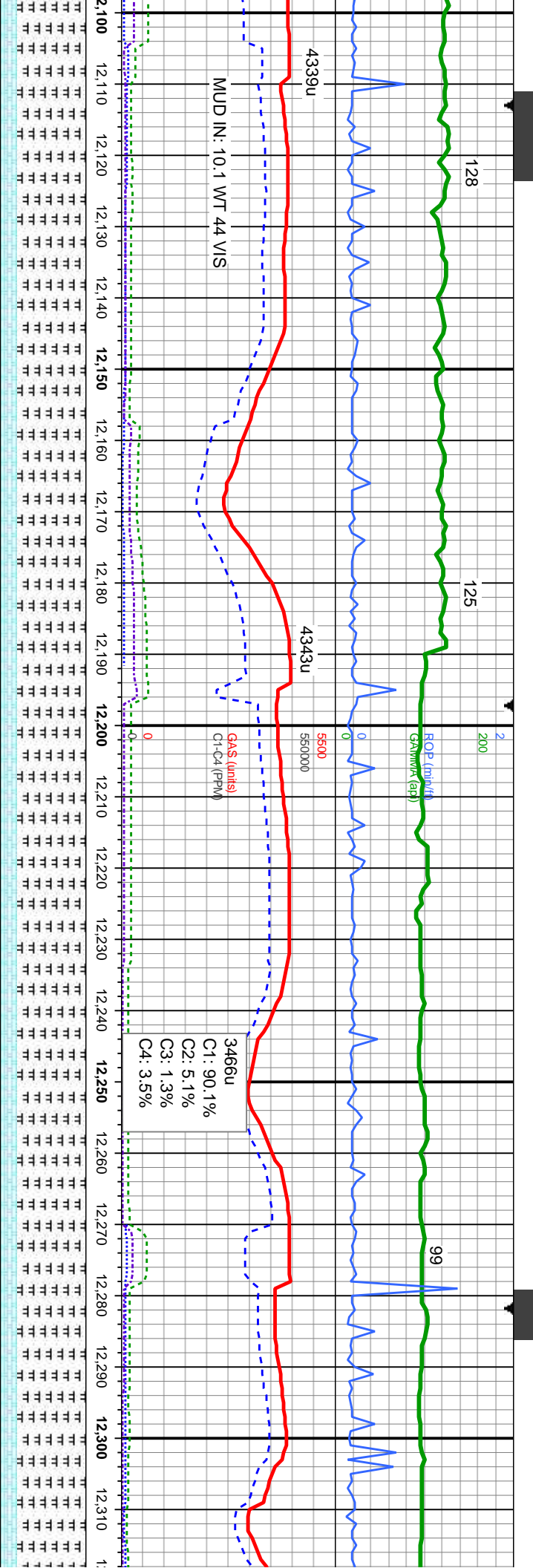
MD: 11971'
TVD: 7,413.75'
Inclination: 90.03°
Azimuth: 358.85°
VS: 4272.44'

4313u
C1: 90.1%
C2: 4.6%
C3: 2.0%
C4: 3.2%

MRLST: med-dk gy, sb blk, med
sft-frm, silty tex, v calc,CHK:lt-med gy, sb
blk, tr sb pily, sft, mot tex, v calc,mod
stmg milky bl cut, dull gn ring

MRLST: med-dk gy, sb blk, med sft-frm,
silty tex, v calc,CHK:lt-med gy, sb blk, tr
sb pily, sft, mot tex, v calc,mod stmg
milky bl cut, dull gn ring

MD: 12,057'
TVD: 7,413.69'
Inclination: 90.06°
Azimuth: 357.83°
VS: 4358.41'



MD: 12,142 '
TVD: 7,413.42 '
Inclination: 90.3 °
Azimuth: 358 °
VS: 4443.37 '

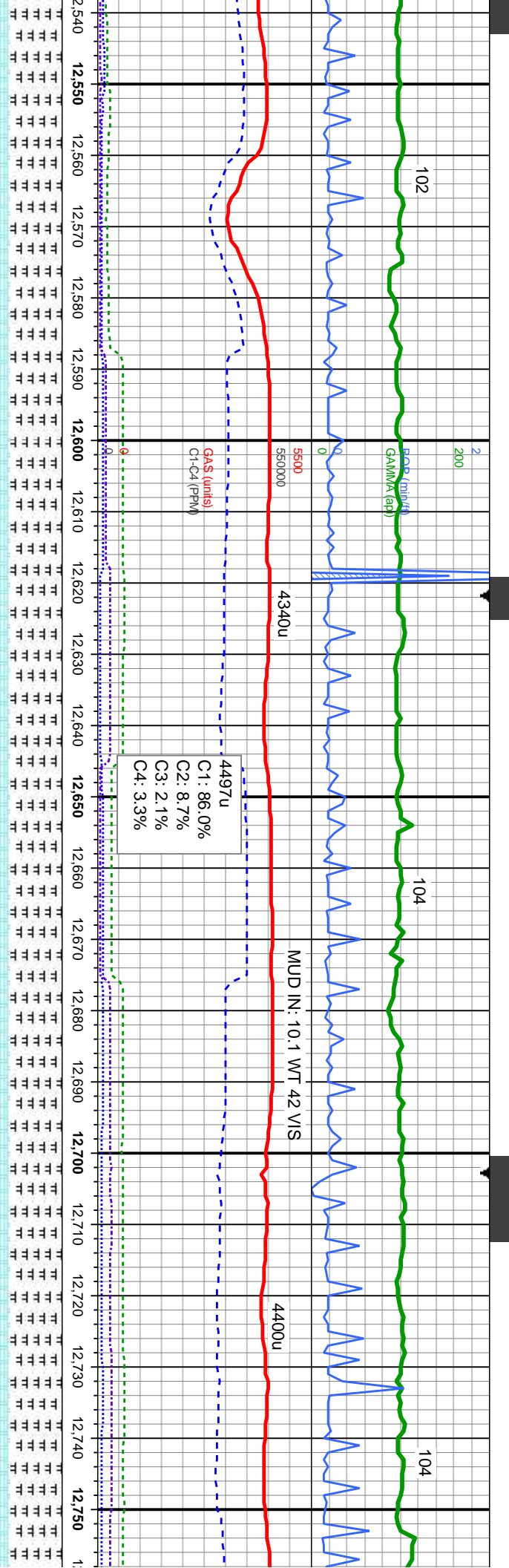
MD: 12,226 '
TVD: 7,412.73 '
Inclination: 90.64 °
Azimuth: 358.14 °
VS: 4527.34 '

MD: 12,311 '
TVD: 7,411.8 '
Inclination: 90.1 °
Azimuth: 357.5 °
VS: 4612.29 '

MRLST: med-dk gy, sb blk, med sft-fm,
silty tex, v calc,CHK:lt-med gy, sb blk, tr
sb pily, sft, mot tex, v calc,mod stmg milky
bl cut, dull gn ring

MRLST: med-dk gy, sb blk, med sft-fm,
silty tex, v calc,CHK:lt-med gy, sb blk, tr
sb pily, sft, mot tex, v calc,mod stmg
milky bl cut, dull gn ring





MD: 12,567 ' TVD: 7,410.05 ' Inclination: 90.67 ° Azimuth: 357.7 ° VS: 4,789.23 ' MD: 12,565 ' TVD: 7,410.05 ' Inclination: 90.67 ° Azimuth: 357.7 ° VS: 4,789.23 '

med-dk gy, sb blk, med sft-fm, silty tex, v med gy, sb blk, tr sb ply, sft, mot tex, v mg milky bl cut, dull gn ring

6800 7800

MRST: med-dk gy, sb blk, med sft-fm, silty tex, v calc,CHK:lt-med gy, sb blk, tr sb ply, sft, mot tex, v calc,mod stmg milky bl cut, dull gn ring

MRST: med-dk gy, sb blk, med sft-fm, silty tex, v calc,CHK:lt-med gy, sb blk, tr sb ply, sft, mot tex, v calc,mod stmg milky bl cut, dull gn ring

MD: 12,733 ' TVD: 7,410.05 ' Inclination: 90 ° Azimuth: 355.87 ° VS: 4865.97 ' MD: 12,733 ' TVD: 7,410.05 ' Inclination: 90 ° Azimuth: 355.87 ° VS: 4865.97 '

