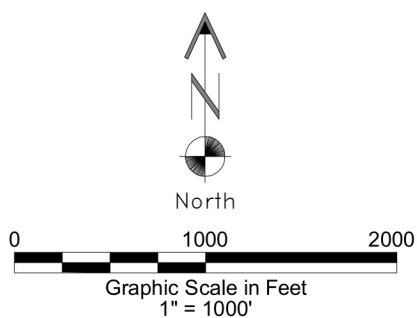
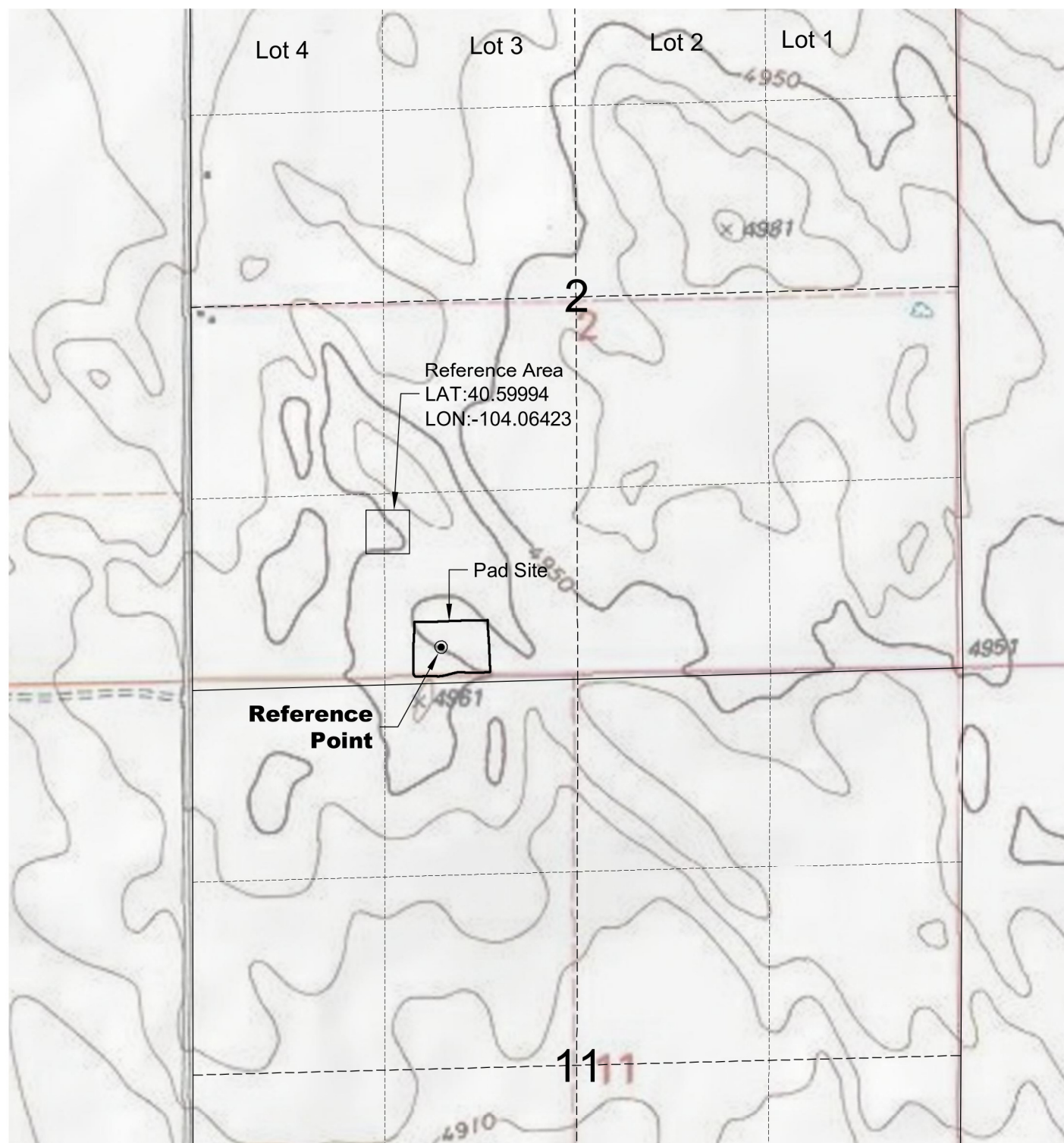


DWG: G:\GEOSURV\WeldzNorth\Red Hawk Petroleum\Wellplats\Loomis 2-1H\Loomis 2-1H F2A.dwg USER: SHH DATE: Apr 23, 2014 9:48am



LAND SURVEYING AND MAPPING
LAFAYETTE - WINTER PARK
Ph 303 666 0379 Fx 303 665 6320

RED HAWK PETROLEUM LLC
LOOMIS 2-1H PAD

SE1/4 SW1/4 SECTION 2 T7N R6W
6th PM WELD COUNTY COLORADO

4/23/14