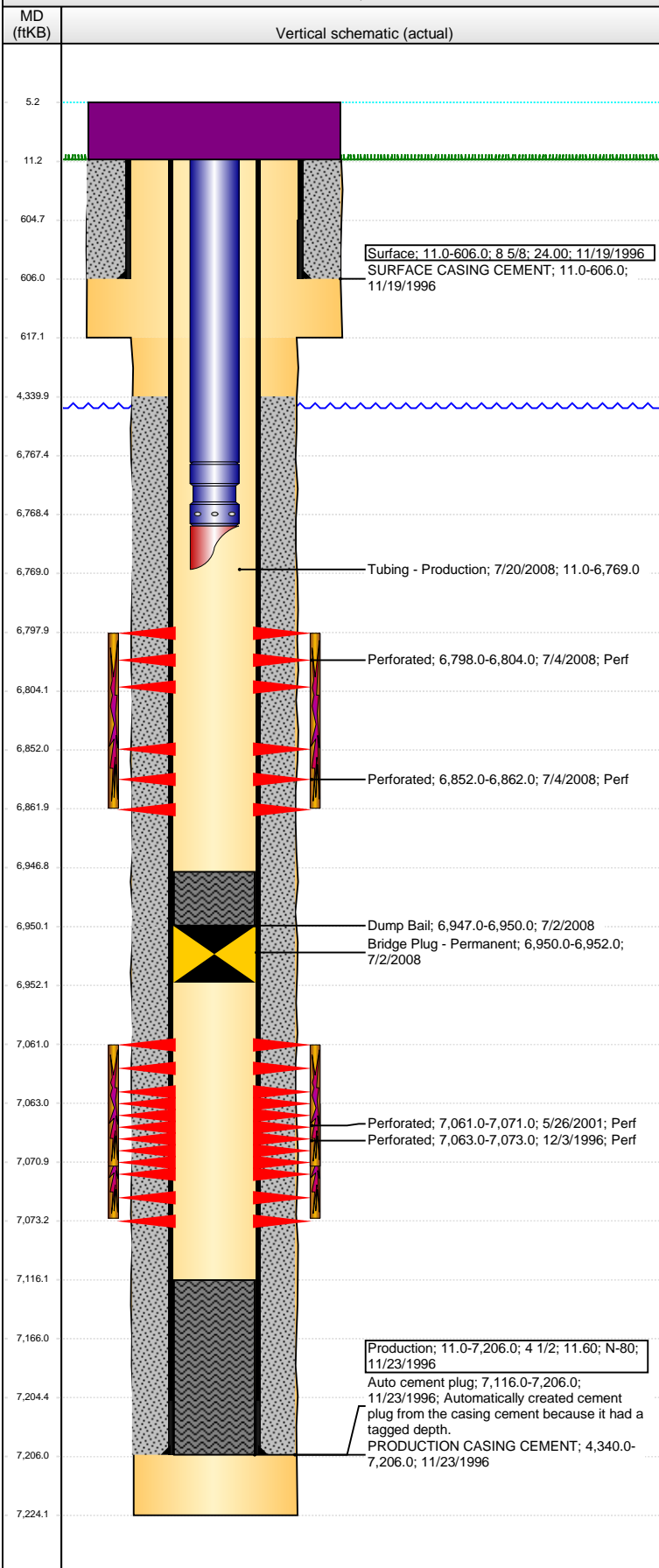


Well Name: FARAMIR FARMS 06-32

VERTICAL - ORIGINAL HOLE, 4/29/2014 2:41:59 PM



Well Header				
API 05-123-19254	Business Unit WATTENBERG	District 15	Well Config VERTICAL	
Original KB Elevation (ft) 4,843.00	KB - GL / MSL (ftKB) 11.00	Spud Date 11/18/1996	P & A Date	
Comment				
Directions To Well				
Congressional Location				
Quarter 1	Quarter 2	Quarter 3 NW	Quarter 4 SW	Section 6
Township 3 N		Range 64 W		Rng E/W Dir
Bottom Hole Location				
North-South Distance (ft)		From N or S Line	East-West Distance (ft)	
From E or W Line				
Plug Back Total Depths				
Date	Depth (ftKB)	Method		Com
11/20/1996	7,166.0	CASING TALLY		
Wellbore Sections				
Section Des	Size (in)	Act Top, MD (ftKB)	Act Btm, MD (ftKB)	
SURFACE PRODUCTION	12 1/4	11.0	617.0	
	7 7/8	617.0	7,224.0	
Zone Statuses				
Zone Name	Status Date	Status	Job	
CODELL	12/6/1996	PR	DRILLING/COMPLETION - ORIGINAL, 11/18/1996 00:00	
CODELL	6/10/2001	PR	RE-FRAC, 5/24/2001 00:00	
CODELL	7/2/2008	SI	RECOMPLETION, 7/2/2008 00:00	
NIOBRARA	7/22/2008	PR	RECOMPLETION, 7/2/2008 00:00	
Casing Strings				
Surface, 606.0ftKB				
Casing Description Surface	Run Date 11/19/1996	OD (in) 8 5/8	Wt/Len (l...) 24.00	Grade N-80
			Top, MD (ft...) 11.0	MD (ftKB) 606.0
Production, 7,206.0ftKB				
Casing Description Production	Run Date 11/23/1996	OD (in) 4 1/2	Wt/Len (l...) 11.60	Grade N-80
			Top, MD (ft...) 11.0	MD (ftKB) 7,206.0
Cement				
Description SURFACE CASING CEMENT	Top Depth (ftKB) 11.0	Bottom Depth (ftKB) 606.0		
Description PRODUCTION CASING CEMENT	Top Depth (ftKB) 4,340.0	Bottom Depth (ftKB) 7,206.0		
Description Dump Bail	Top Depth (ftKB) 6,947.0	Bottom Depth (ftKB) 6,950.0		
Tubing Components				
Item Des	OD (in)	Wt (lb/ft)	Grade	Jts
Tubing	2 3/8	4.70	J-55	211
Seat Nipple	2 3/8			1
Mule Shoe	2 3/8			1
				Len (ft)
				6,756.50
				Btm (ftKB)
				6,767.5
				Btm (TVD) (ftKB)
				6,768.5
				6,769.0
Perforation Data				
Zone	Bnch/St g	Entered Shot Total	Top (ftKB)	Btm (ftKB)
NIOBRARA, ORIGINAL HOLE	A	12	6,798.00	6,804.00
NIOBRARA, ORIGINAL HOLE	B	40	6,852.00	6,862.00
CODELL, ORIGINAL HOLE		40	7,061.00	7,071.00
CODELL, ORIGINAL HOLE		40	7,063.00	7,073.00
Date	Zone	Primary Job Type		
12/4/1996	CODELL, ORIGINAL HOLE	DRILLING/COMPLETION - ORIGINAL		
Technical Result		Tech Result Details		Tech Result Note
Comment				
Date	Zone	Primary Job Type		
5/30/2001	CODELL, ORIGINAL HOLE	RE-FRAC		
Technical Result		Tech Result Details		Tech Result Note
Comment				
LEFT 13,000# OF 20/40 SAND IN CASING				

Well Name: FARAMIR FARMS 06-32

VERTICAL - ORIGINAL HOLE, 4/29/2014 2:42:01 PM

Stimulations & Treatments

Date 7/18/2008	Zone NIOBRARA, ORIGINAL HOLE	Primary Job Type RECOMPLETION
Technical Result	Tech Result Details	Tech Result Note

Comment

Other In Hole

Run Date	Des	OD (in)	Top (ftKB)	Btm (ftKB)
7/2/2008	Bridge Plug - Permanent	3.99	6,950.0	6,952.0

Logs

Date	Type	Top, MD (ftKB)	Btm, MD (ftKB)
11/22/1996	COMPENSATED DENSITY	4,350.0	7,230.0
11/22/1996	INDUCTION	606.0	7,223.0
11/27/1996	CEMENT BOND	4,350.0	7,118.0

