



RADIAL CEMENT BOND LOG
GAMMA RAY
CCL

Company KERR-McGEE OIL & GAS ONSHORE LP
Well PSC 14-13
Field WATTENBERG
County WELD
State COLORADO

Company KERR-McGEE OIL & GAS ONSHORE LP
Well PSC 14-13
Field WATTENBERG
County WELD State COLORADO

Location: API # : 05-123-15956
SHL: 990' FSL & 1225' FWL SW/SW
Permanent Datum GL
Log Measured From KB 12' Elevation 4894'
Drilling Measured From KB
Other Services

Date 4-22-2014

Run Number ONE
Depth Driller 7832'
Depth Logger 1200'
Bottom Logged Interval 1200'
Top Log Interval SURFACE
Open Hole Size 7 7/8"
Type Fluid WATER
Density / Viscosity 1.0
Max. Recorded Temp. 98
Estimated Cement Top 70'
Time Well Ready N/A
Time Logger on Bottom N/A
Equipment Number 5432
Location GREELEY
Recorded By M. JANDREAU
Witnessed By L. WEBB

Borehole Record				Tubing Record			
Run Number	Bit	From	To	Size	Weight	From	To
ONE							
TWO							

	Size	Wgt/Ft	Top	Bottom
Casing Record				
Surface String	8 5/8		0	523'
Prot. String				
Production String	4 1/2	11.6	0	7818'
Liner				

<<< Fold Here >>>

All interpretations are opinions based on inferences from electrical or other measurements and we cannot and do not guarantee the accuracy or correctness of any interpretation, and we shall not, except in the case of gross or willful negligence on our part, be liable or responsible for any loss, costs, damages, or expenses incurred or sustained by anyone resulting from any interpretation made by any of our officers, agents or employees. These interpretations are also subject to our general terms and conditions set out in our current Price Schedule.

Comments

NOT CORRELATED
RAN BOND LOG TO VERIFY CEMENT
THANK YOU FOR USING WARRIOR ENERGY SERVICES!!!!
CEMENT AT 4860' TO 4984' AND FROM 4390' TO 4445'
CEMENT FROM 680' TO 134'

Sensor	Offset (ft)	Schematic	Description	Len (ft)	OD (in)	Wt (lb)

Tool Joint	Tool Joint Length (ft)	Tool Joint Weight (lb)	Tool Joint O.D. (in)	Tool Joint P.O.D. (in)	Tool Joint P.O.D. (in)	Tool Joint P.O.D. (in)
PTS275	2.83	2.75				
HEADVOLT	16.25					
IntTemp	14.83					
WVFS3FT	11.58					
WVFCAL	11.58					
WVFS1	11.58					
WVFS2	11.58					
WVFS3	11.58					
WVFS4	11.58					
WVFS5	11.58					
WVFS6	11.58					
WVFS7	11.58					
WVFS8	11.58					
WVFS5FT	10.58					
CNLSC	6.00					
CNSSC	5.17					
CCL	3.64					
GR	0.90					
RBT-Probe (Base) Probe Radii Bond Tool with Digital Telemetry	8.92	2.75	90.00			
CNT-Probe_B (275) 6 bow centralizer	3.00	2.75	40.00			
GR-Probe (275) Probe 2.75"	4.33	2.75	30.00			

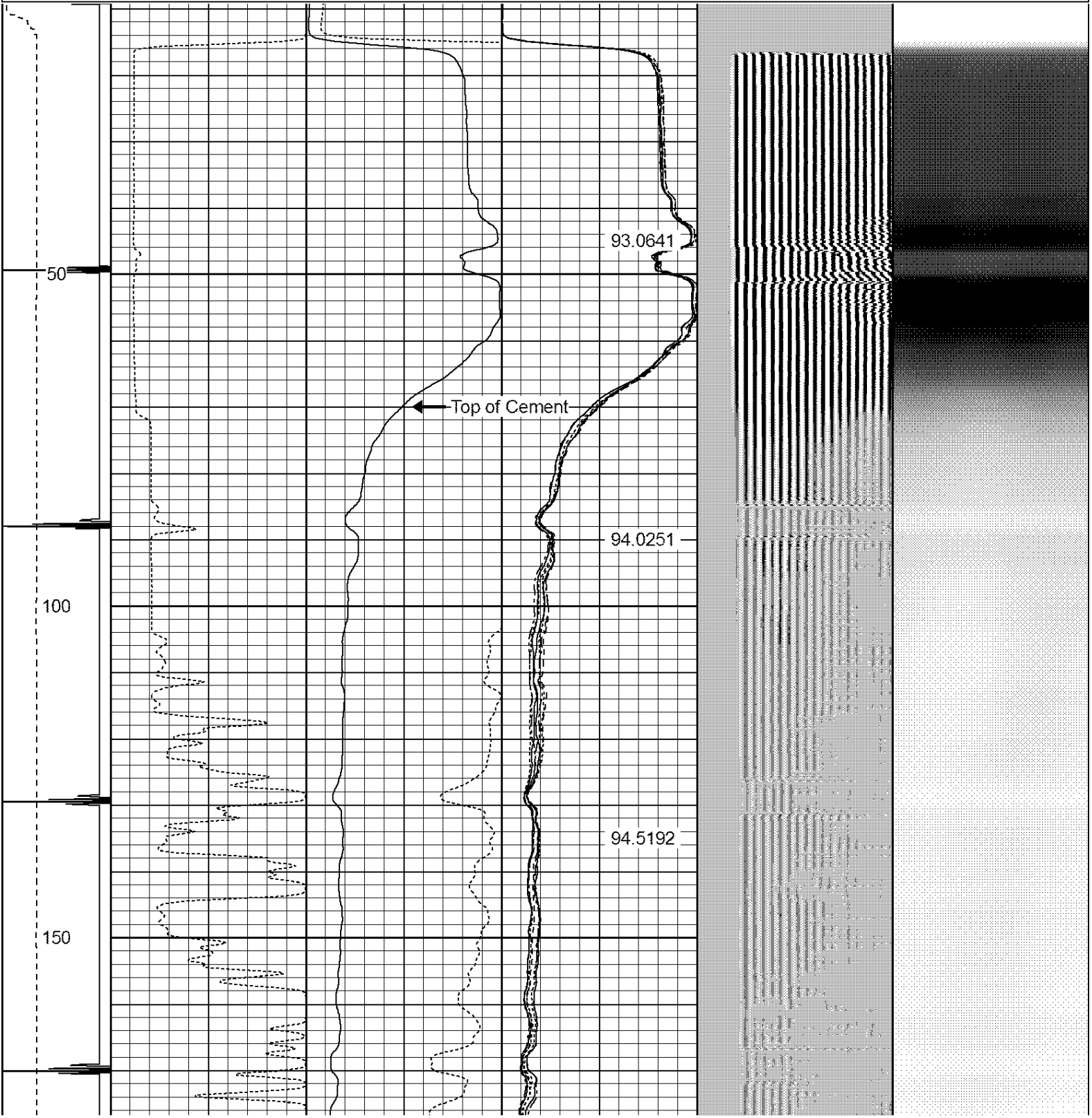
Dataset: public service company 14-13.db: field/well/run1/pass4

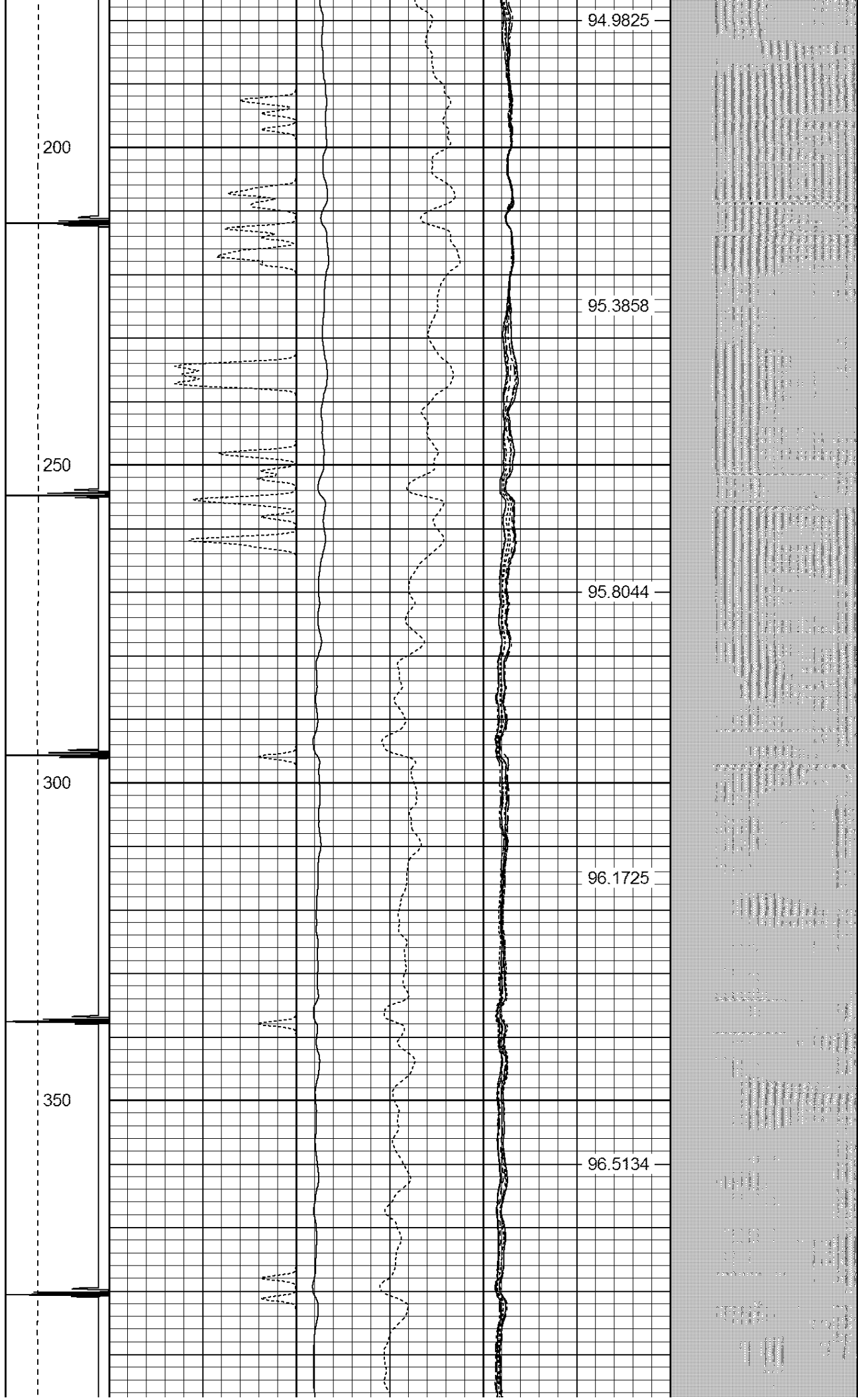
Total Length: 19.08 ft

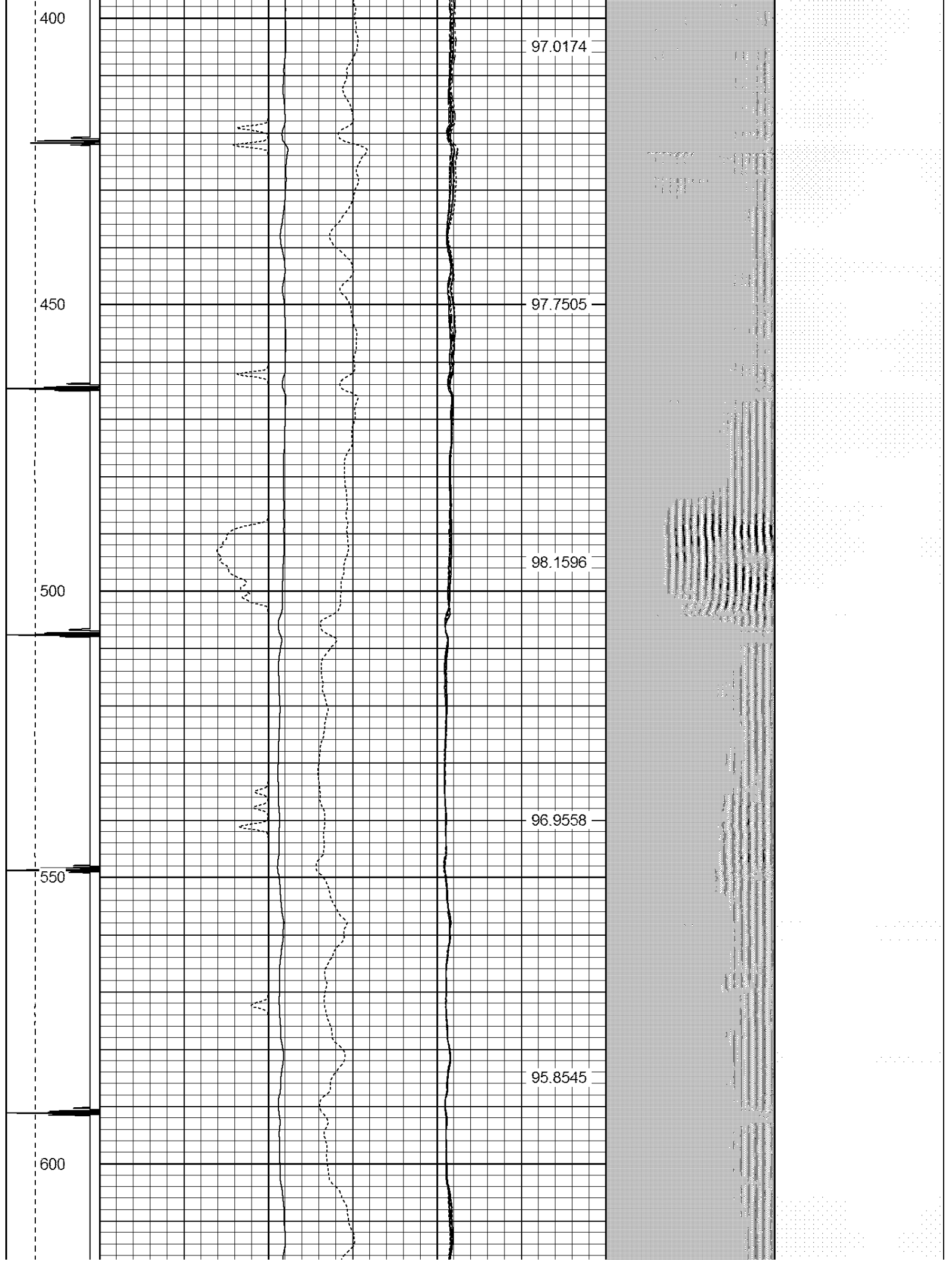
Total Weight: 160.00 lb

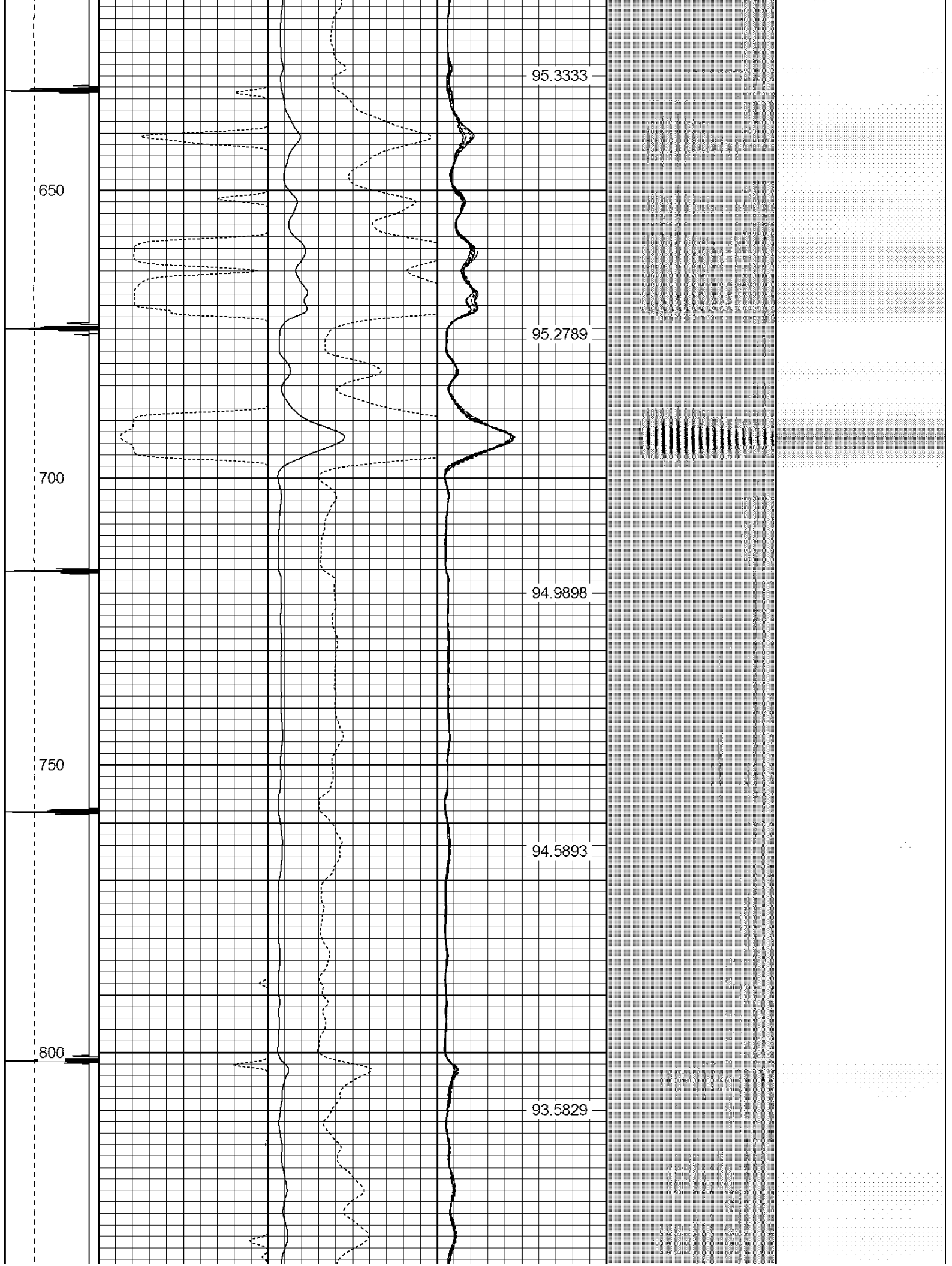
O.D. 2.75 in

Dataset Creation: Tue Apr 22 07:40:25 2014 by Log 7.0 B1																		
Charted by: Depth in Feet scaled 1:240																		
-9	CCL	1	200	TT (usec)	800	0	AMP (mV)	100	0	AMPS1	100	200	VDL	1200	1	Cement Map	8	
LSPD		0	GR (GAPI)	200	0	AMPx5 (mV)	20	0	AMPS2	100					1	100		
(ft/min)		200	GR (GAPI)	400					0	AMPS4	100							
0	250									0	AMPS5	100						
										0	AMPS6	100						
										0	AMPS7	100						
										0	AMPS8	100						
										IntTemp								
										(degF)								





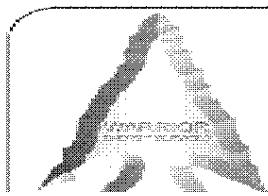
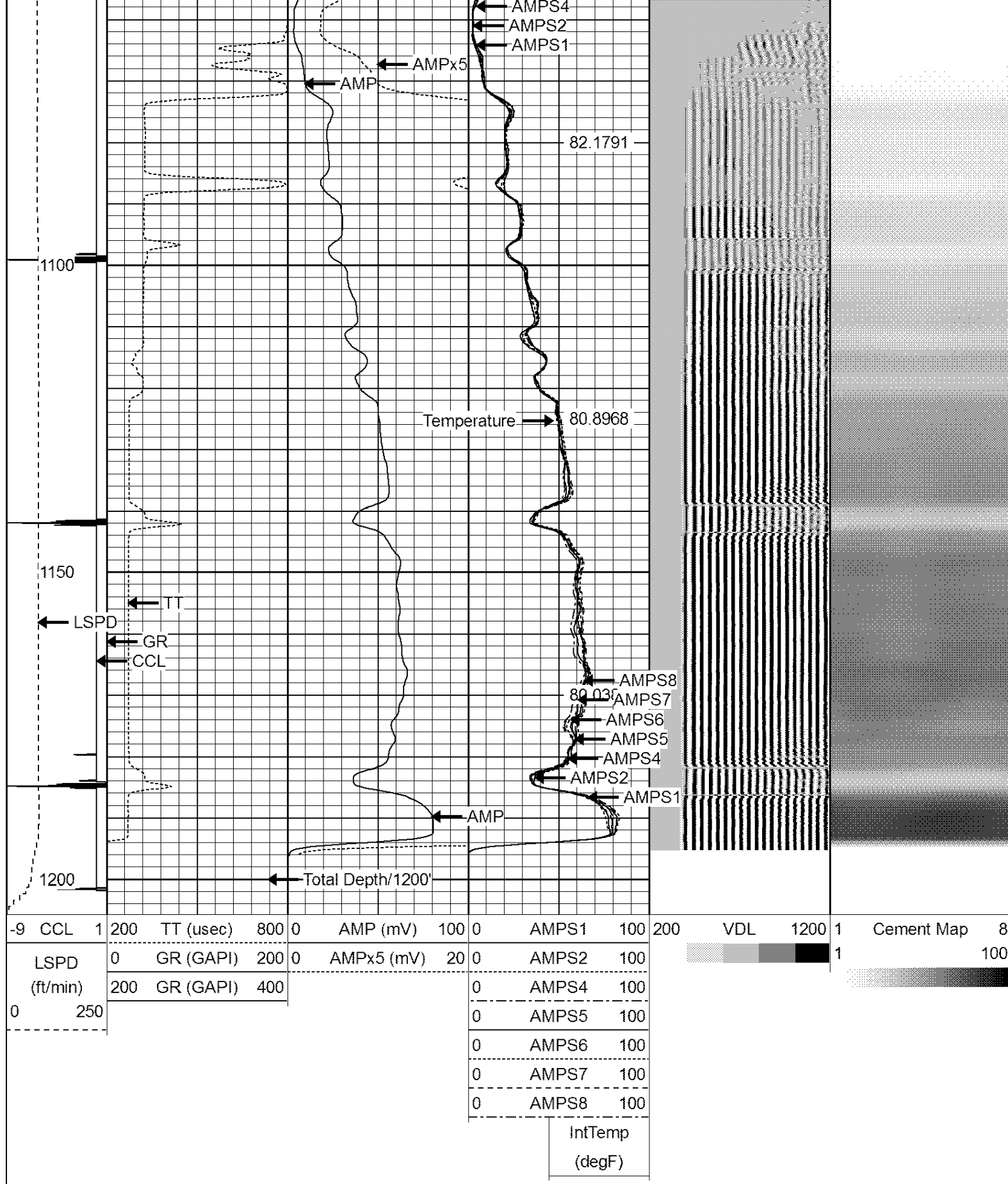






444444

444444



WARRIOR
ENERGY SERVICES

Company KERR-McGEE OIL & GAS ONSHORE LP

Well PSC 14-13

Field WATTENBERG

County WELD



County WELD
State COLORADO