

# GREAT WESTERN OIL & GAS COMPANY

## CONSTRUCTION LAYOUT FOR

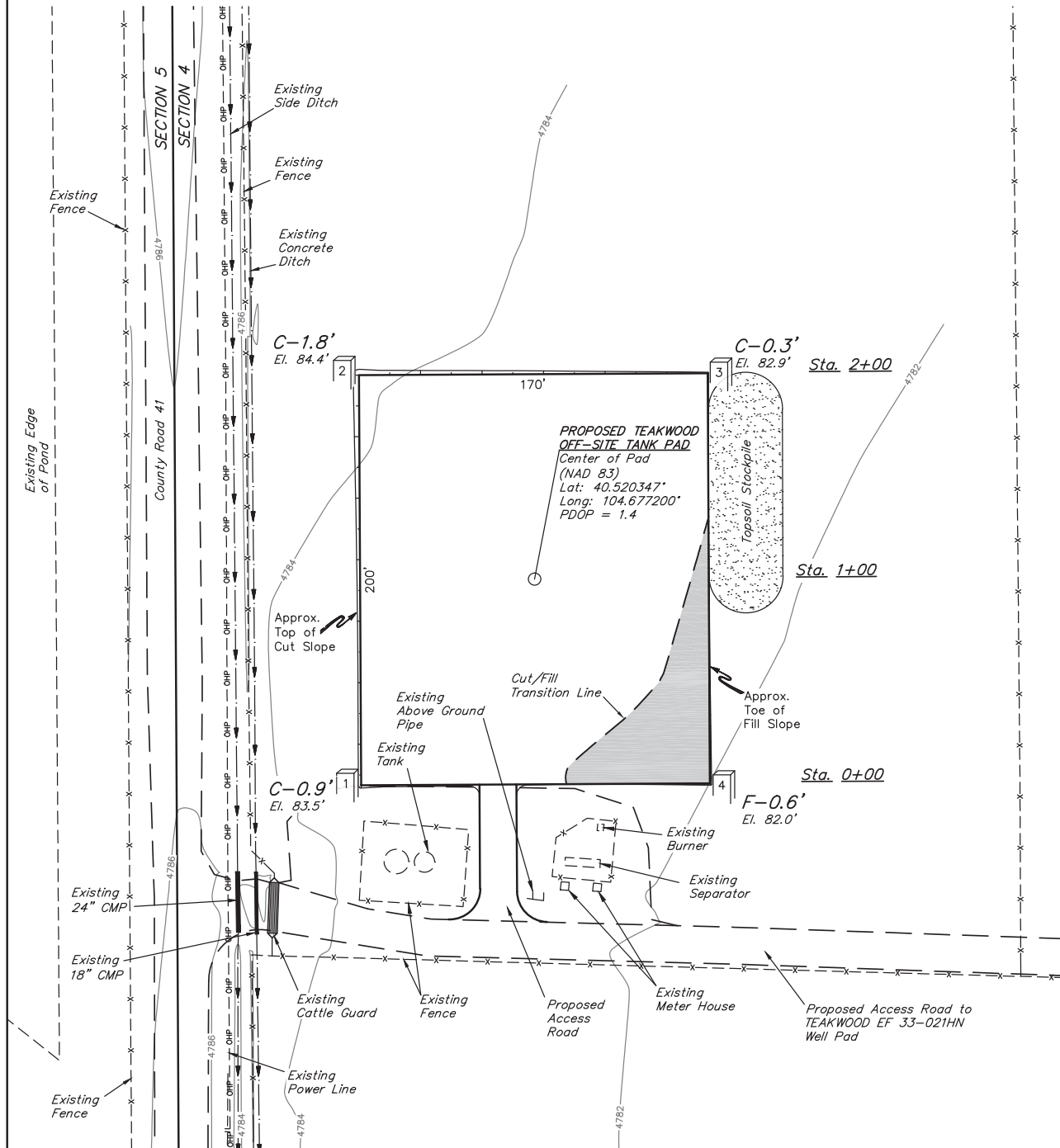
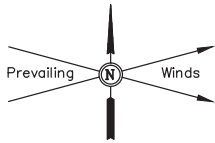
TEAKWOOD OFF-SITE TANK PAD

SECTION 4, T6N, R65W, 6th P.M.

1275' FNL 175' FWL

FIGURE #1

SCALE: 1" = 50'  
DATE: 03-17-14  
DRAWN BY: J.W.



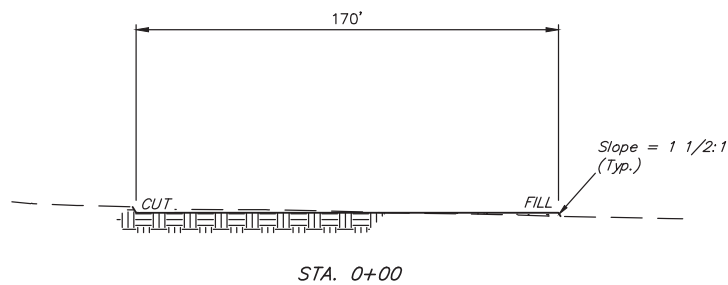
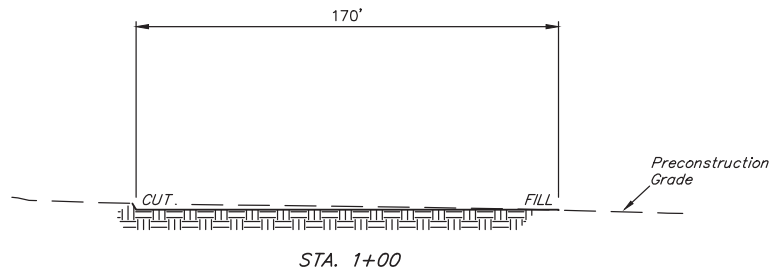
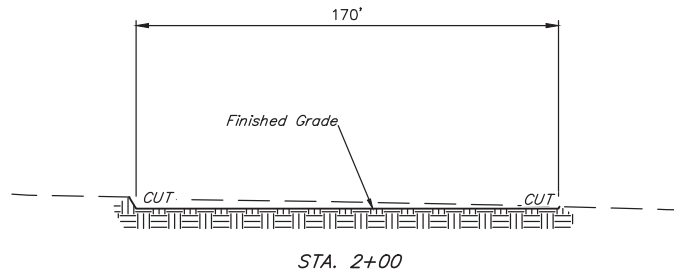
Elev. Ungraded Ground At Center of Pad = 4783.1'  
FINISHED GRADE ELEV. AT CENTER OF PAD = 4782.6'

UINTAH ENGINEERING & LAND SURVEYING  
85 So. 200 East • Vernal, Utah 84078 • (435) 789-1017

1" = 20'  
X-Section  
Scale  
1" = 50'  
DATE: 03-17-14  
DRAWN BY: J.W.

GREAT WESTERN OIL & GAS COMPANY  
CONSTRUCTION LAYOUT CROSS SECTIONS FOR  
TEAKWOOD OFF-SITE TANK PAD  
SECTION 4, T6N, R65W, 6th P.M.  
1275' FNL 175' FWL

FIGURE #2



\* NOTE:  
FILL QUANTITY INCLUDES  
5% FOR COMPACTION

APPROXIMATE YARDAGES

(6") Topsoil Stripping = 640 Cu. Yds.  
Remaining Location = 210 Cu. Yds.  
TOTAL CUT = 850 CU. YDS.  
FILL = 210 CU. YDS.

EXCESS MATERIAL = 640 Cu. Yds.  
Topsoil = 640 Cu. Yds.  
EXCESS UNBALANCE = 0 Cu. Yds.  
(After Interim Rehabilitation)

APPROXIMATE ACREAGE  
SITE DISTURBANCE = ± 0.889 ACRES  
ACCESS ROAD DISTURBANCE = ± 0.046 ACRES  
TOTAL = ± 0.935 ACRES

UINTAH ENGINEERING & LAND SURVEYING  
85 So. 200 East • Vernal, Utah 84078 • (435) 789-1017