



Cathedral Energy Services

145003

2":100' - MD

3/18/2014 10:33:12 AM

Oper. Company: Whiting Petroleum

API/UWI:

Country: US

Field: DJ Basin

State / Province: CO

Well: Razor 11E-1401A

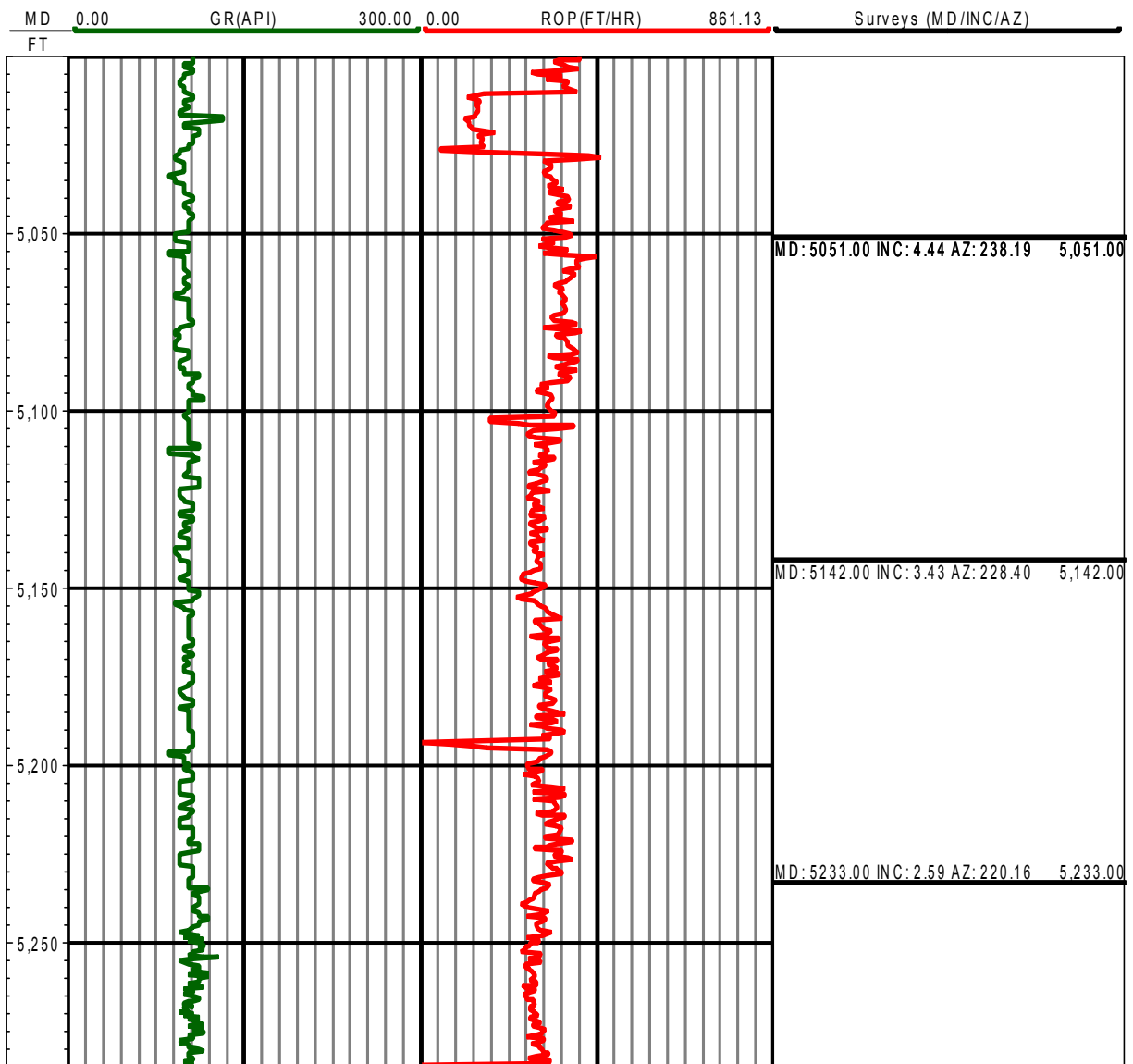
County / Parish: Weld

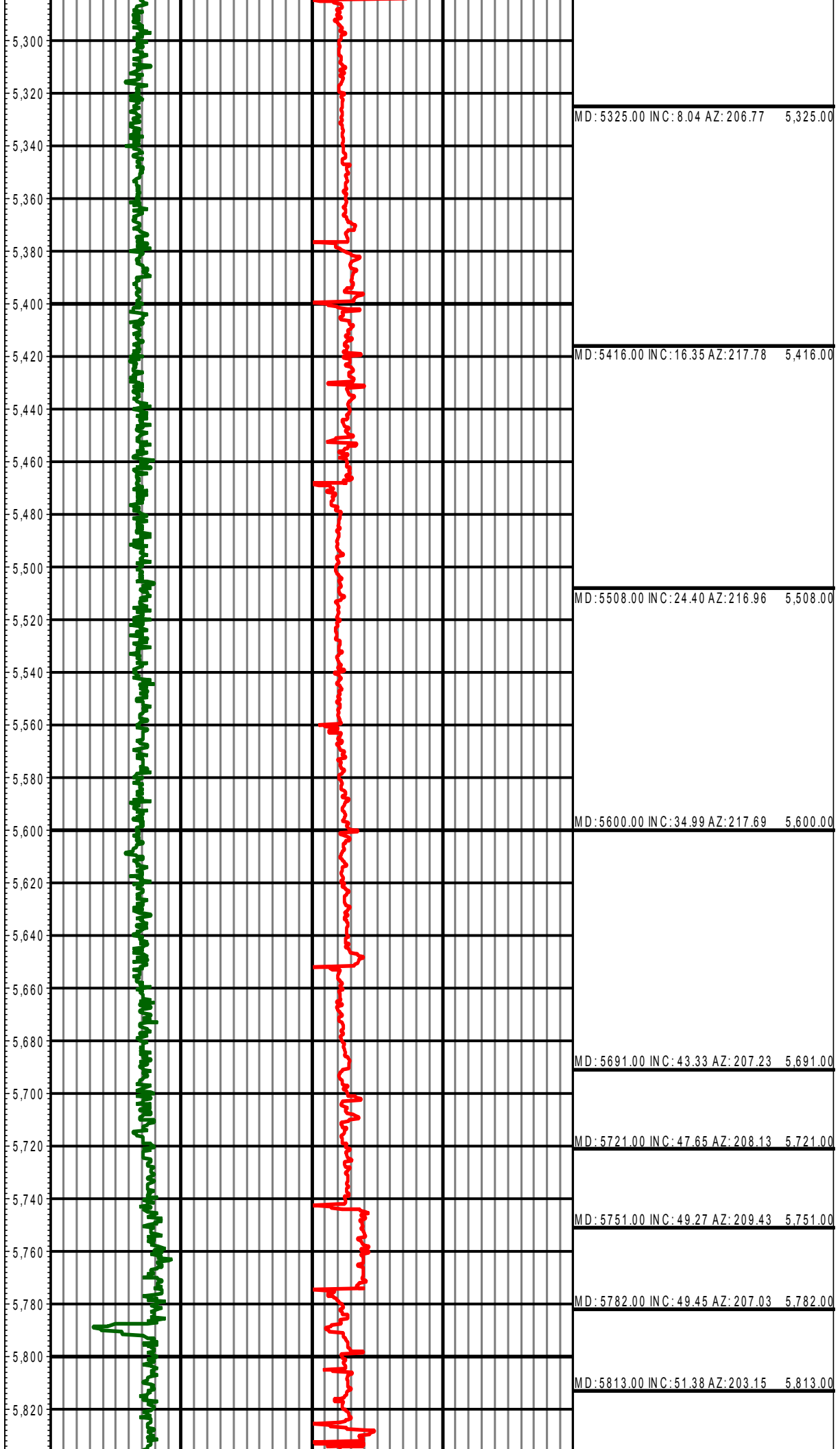
Rig: Case 23

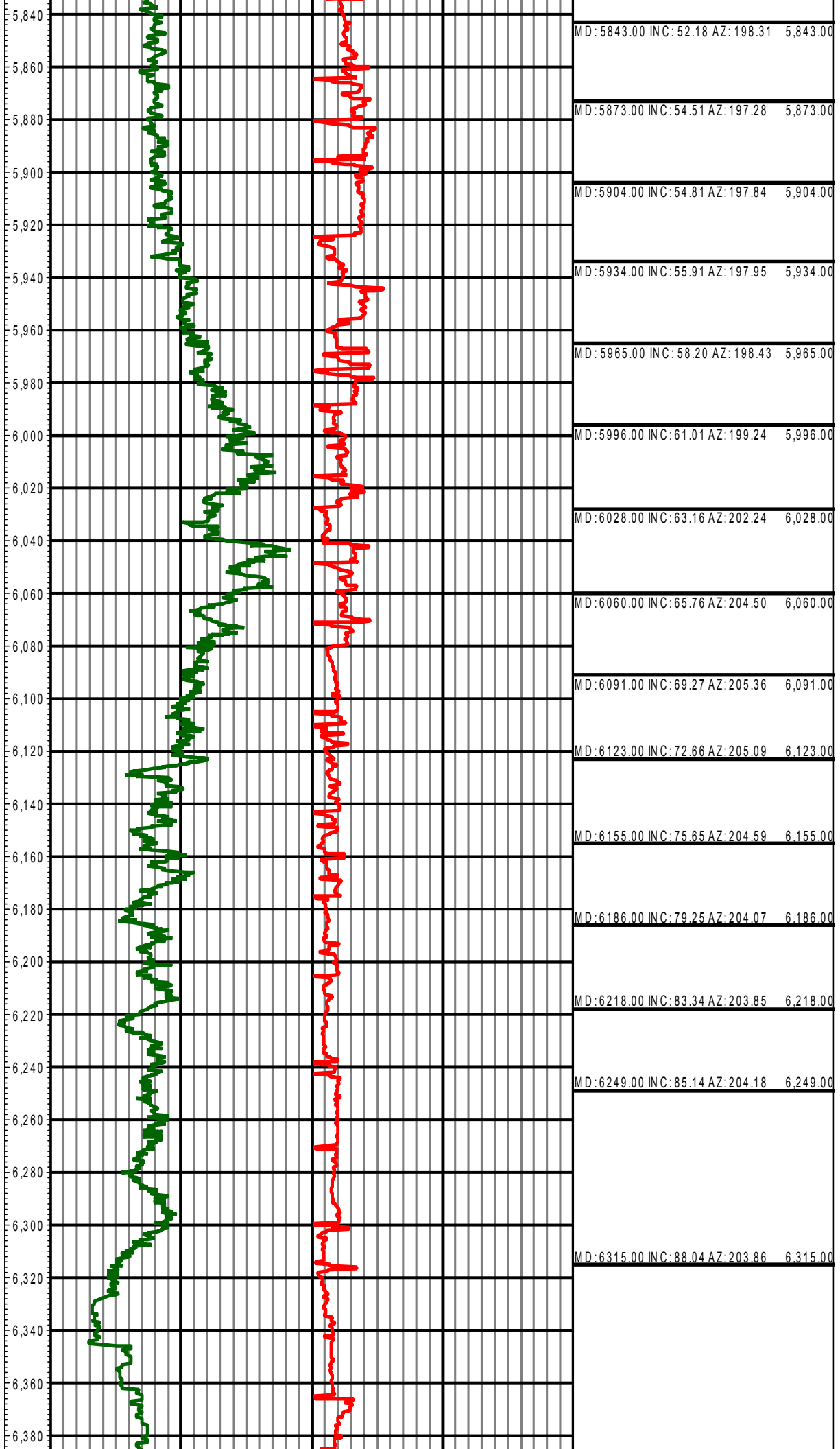
Started:

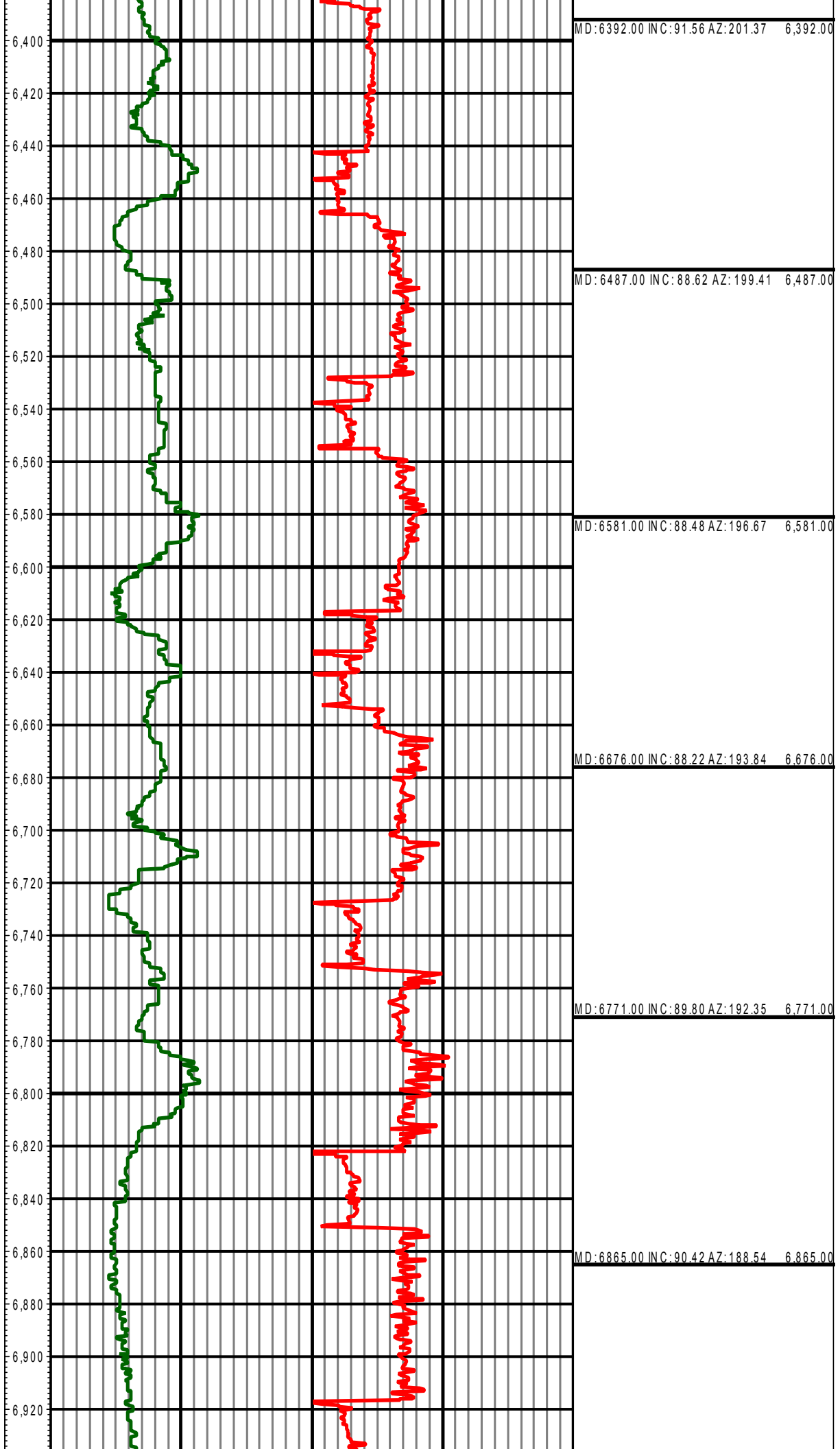
Ended:

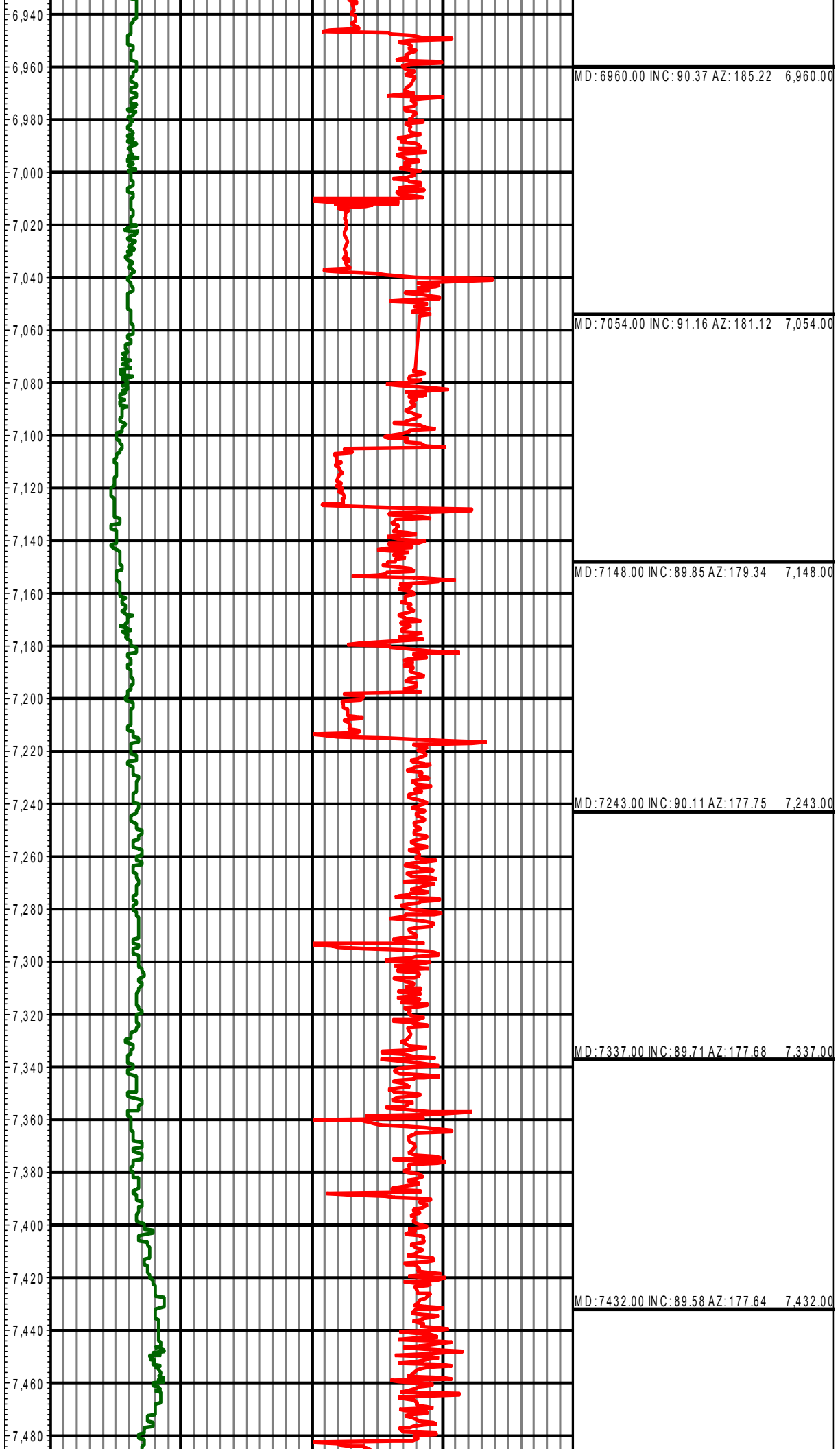
All interpretations are opinions based on inferences from electrical or other measurements and we cannot and do not guarantee the accuracy or correctness of any interpretation, and we shall not except in the case of gross or willful negligence on our part, be liable or responsible for any loss, cost damages or expenses incurred or sustained by anyone resulting from an interpretation made by any of our officers, agents, or employees.

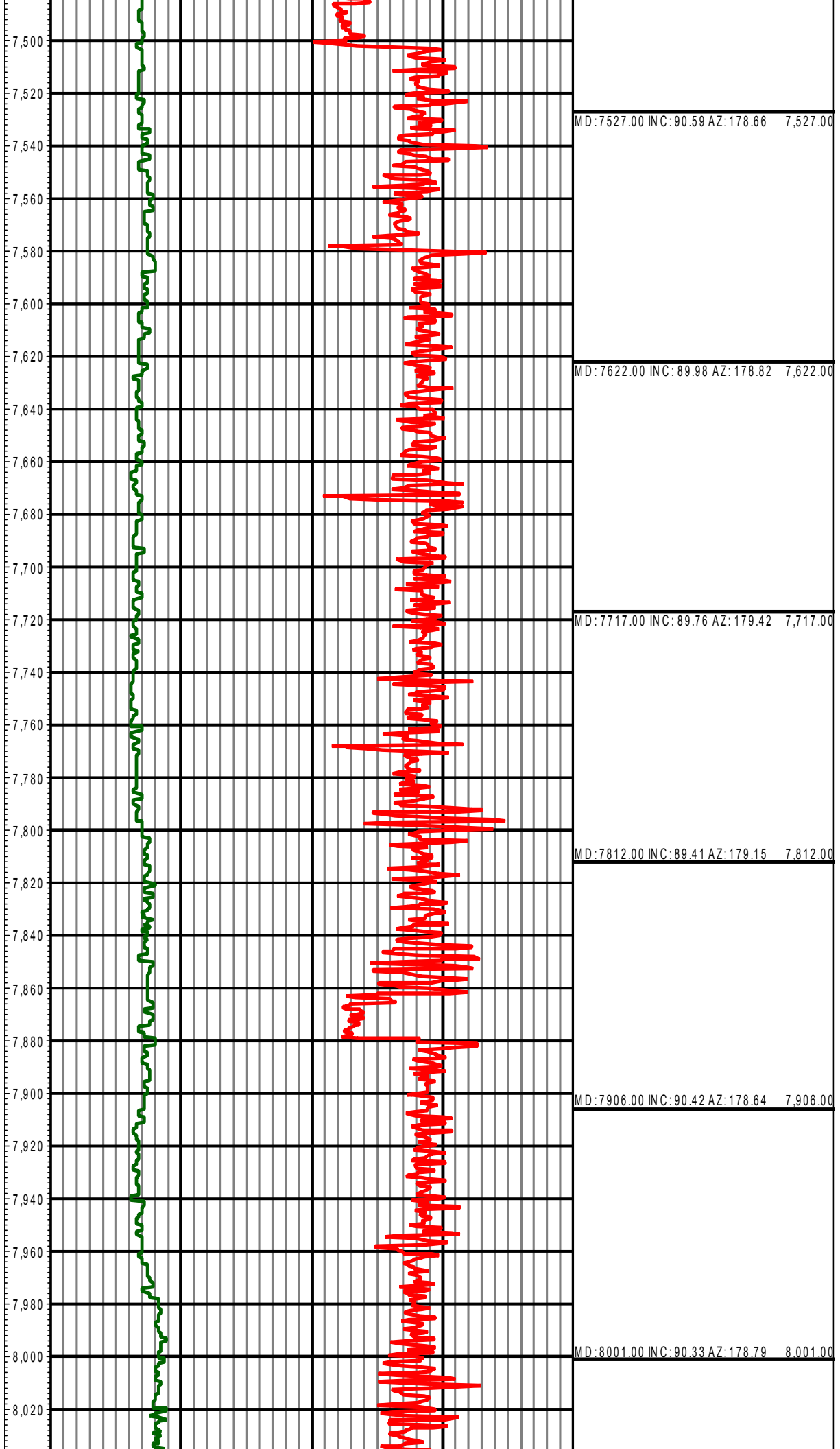


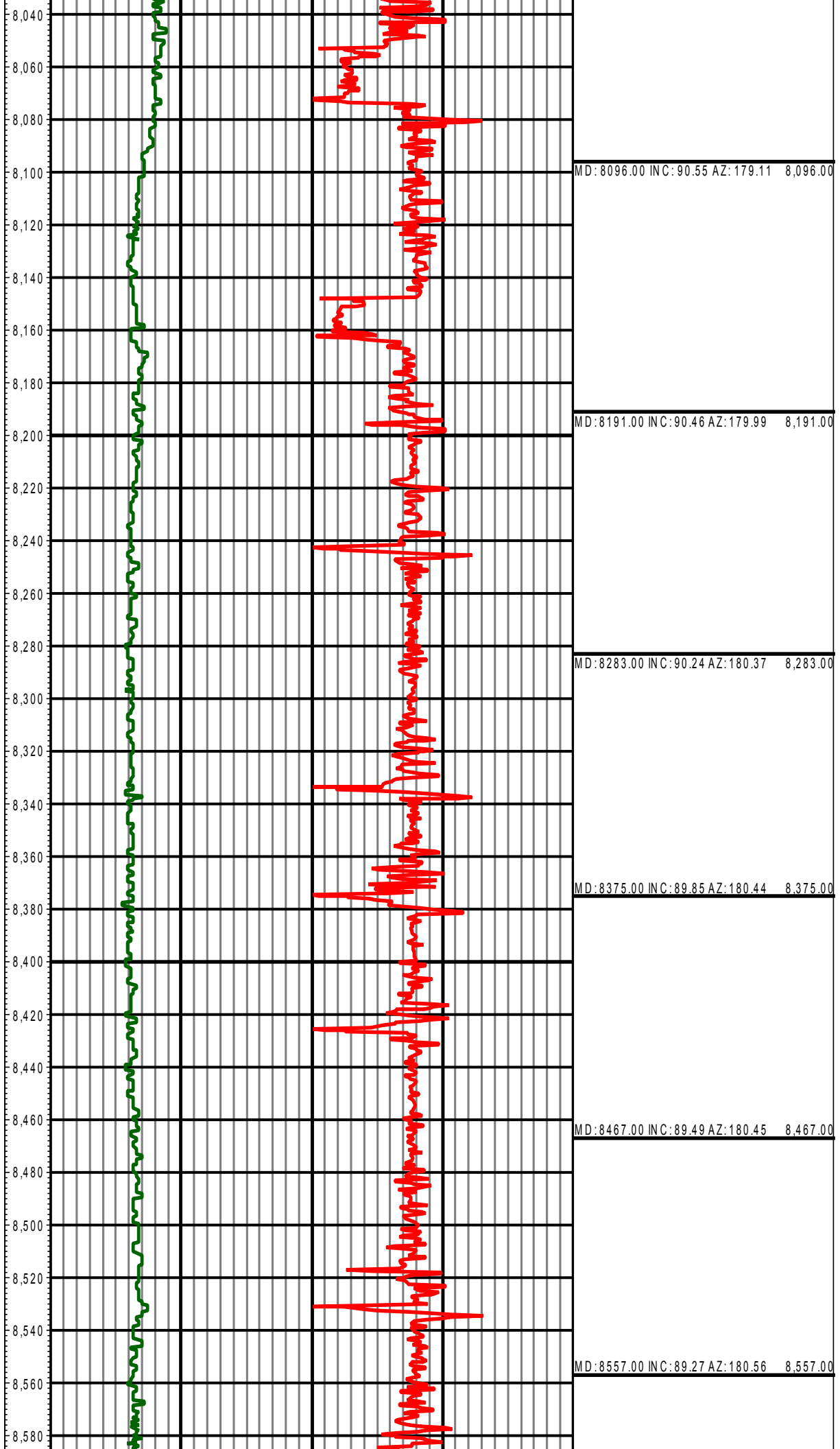


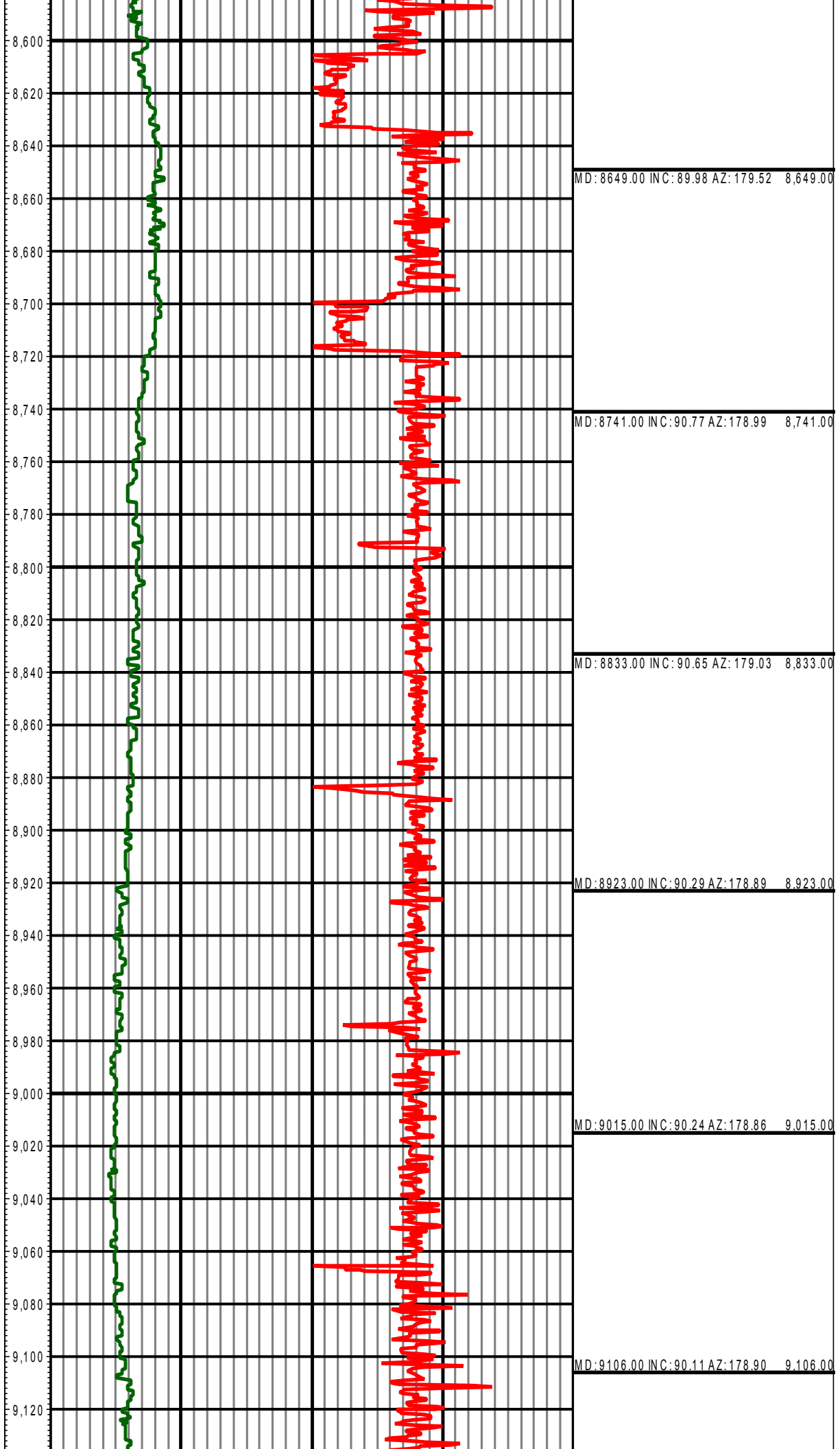


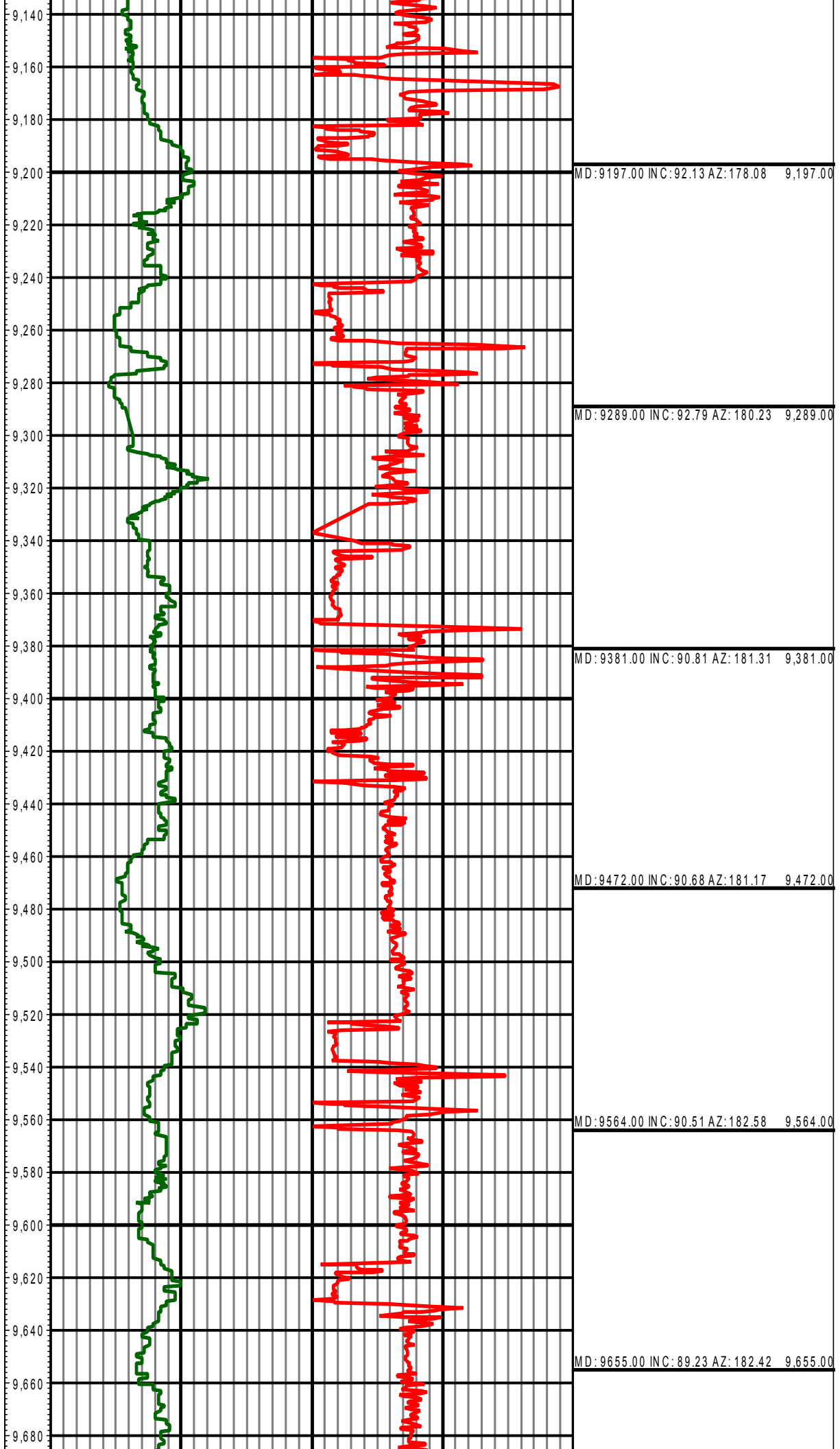


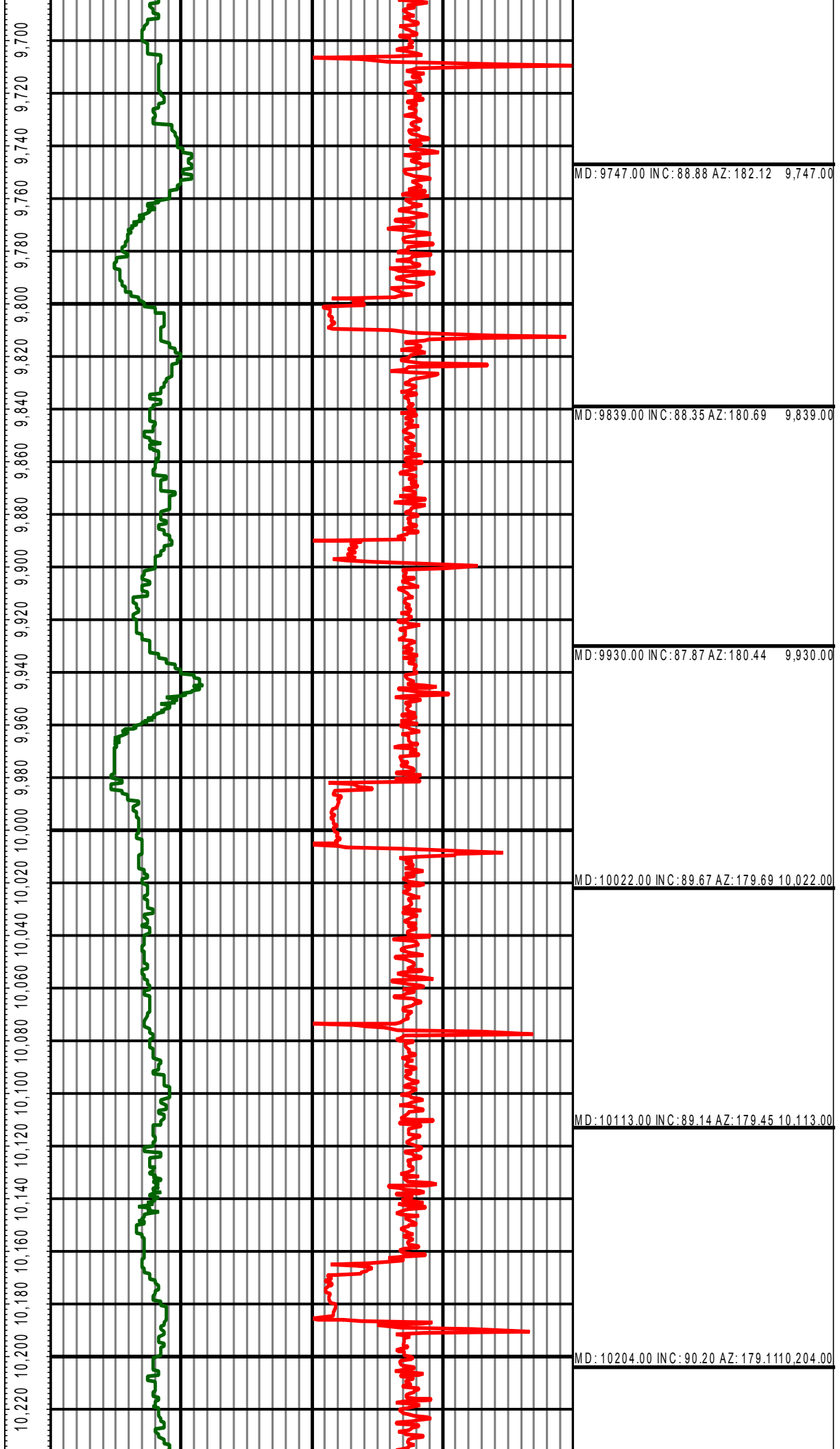




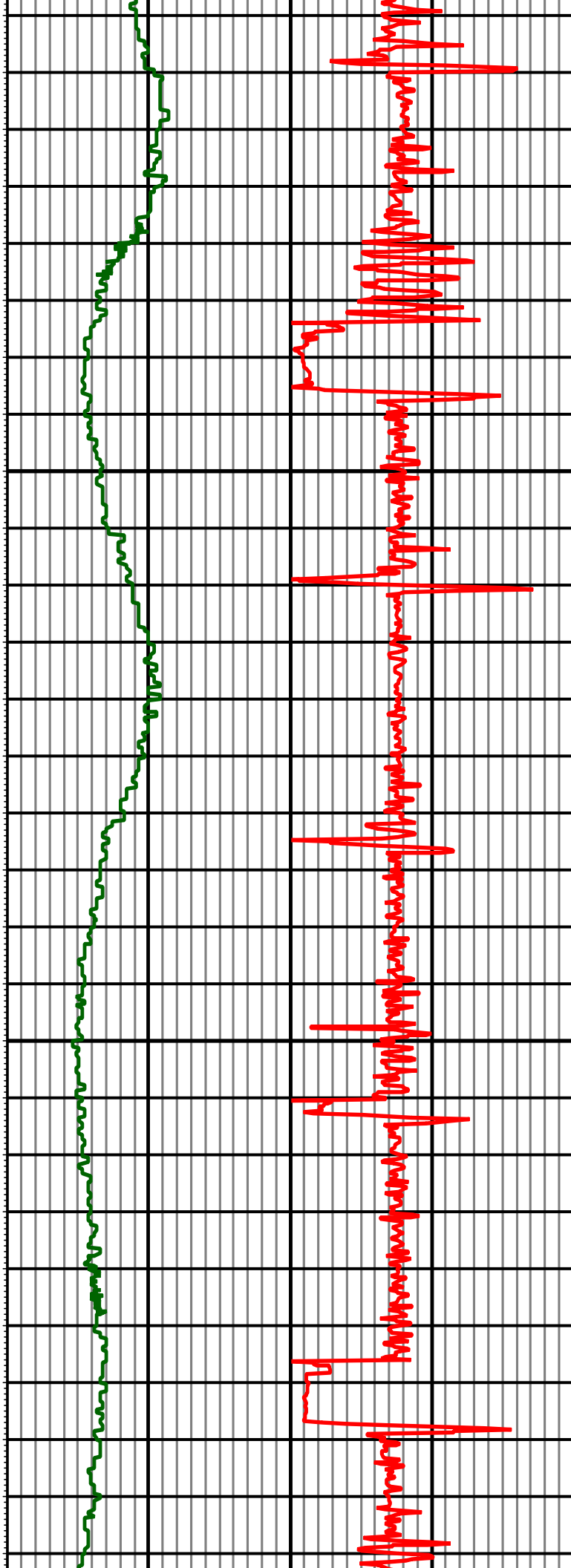








10,760 10,740 10,720 10,700 10,680 10,660 10,640 10,620 10,600 10,580 10,560 10,540 10,520 10,500 10,480 10,460 10,440 10,420 10,400 10,380 10,360 10,340 10,320 10,300 10,280 10,260



MD:10296.00 INC:89.58 AZ:178.94 10,296.00

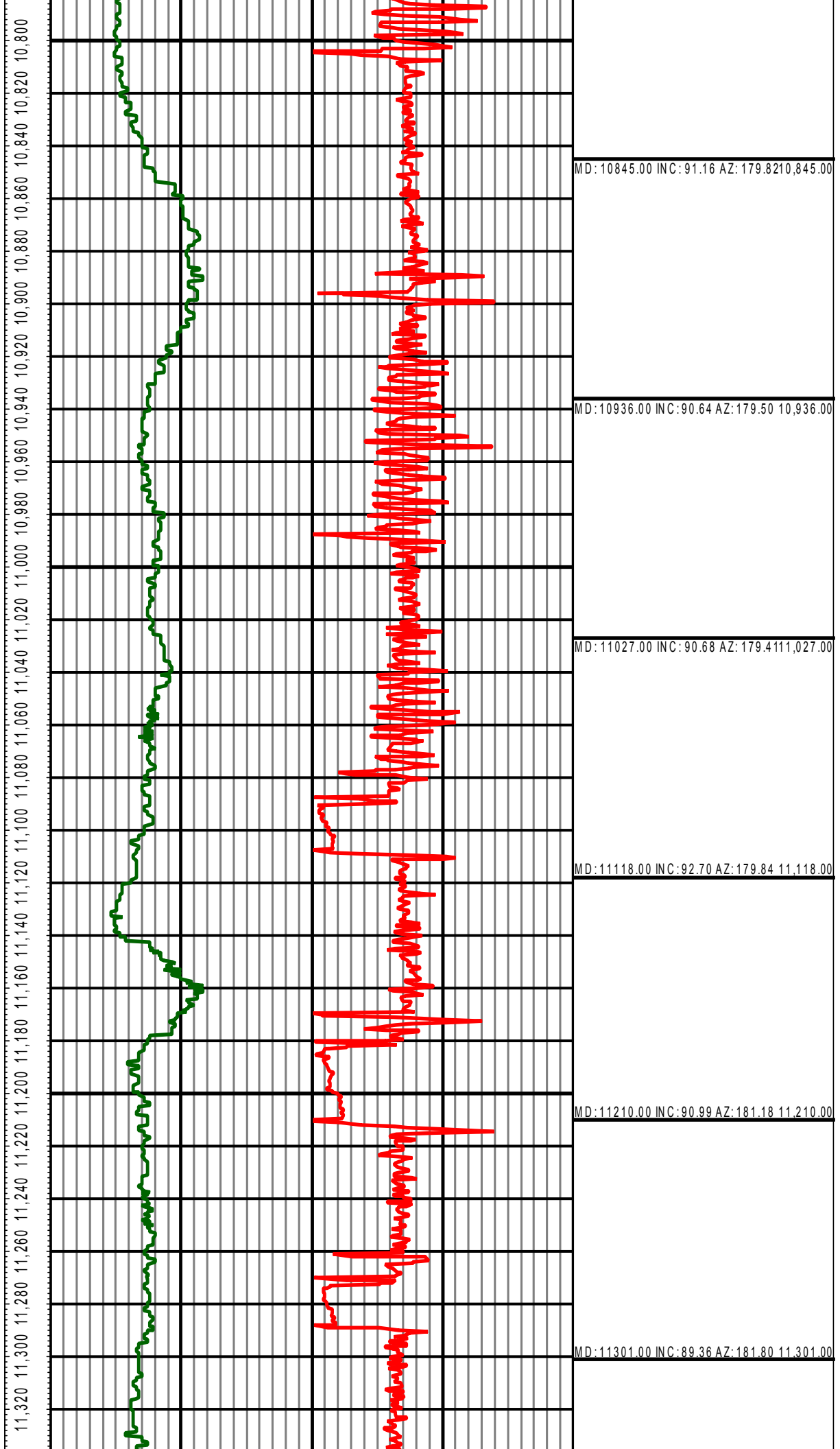
MD:10387.00 INC:90.59 AZ:179.99 10,387.00

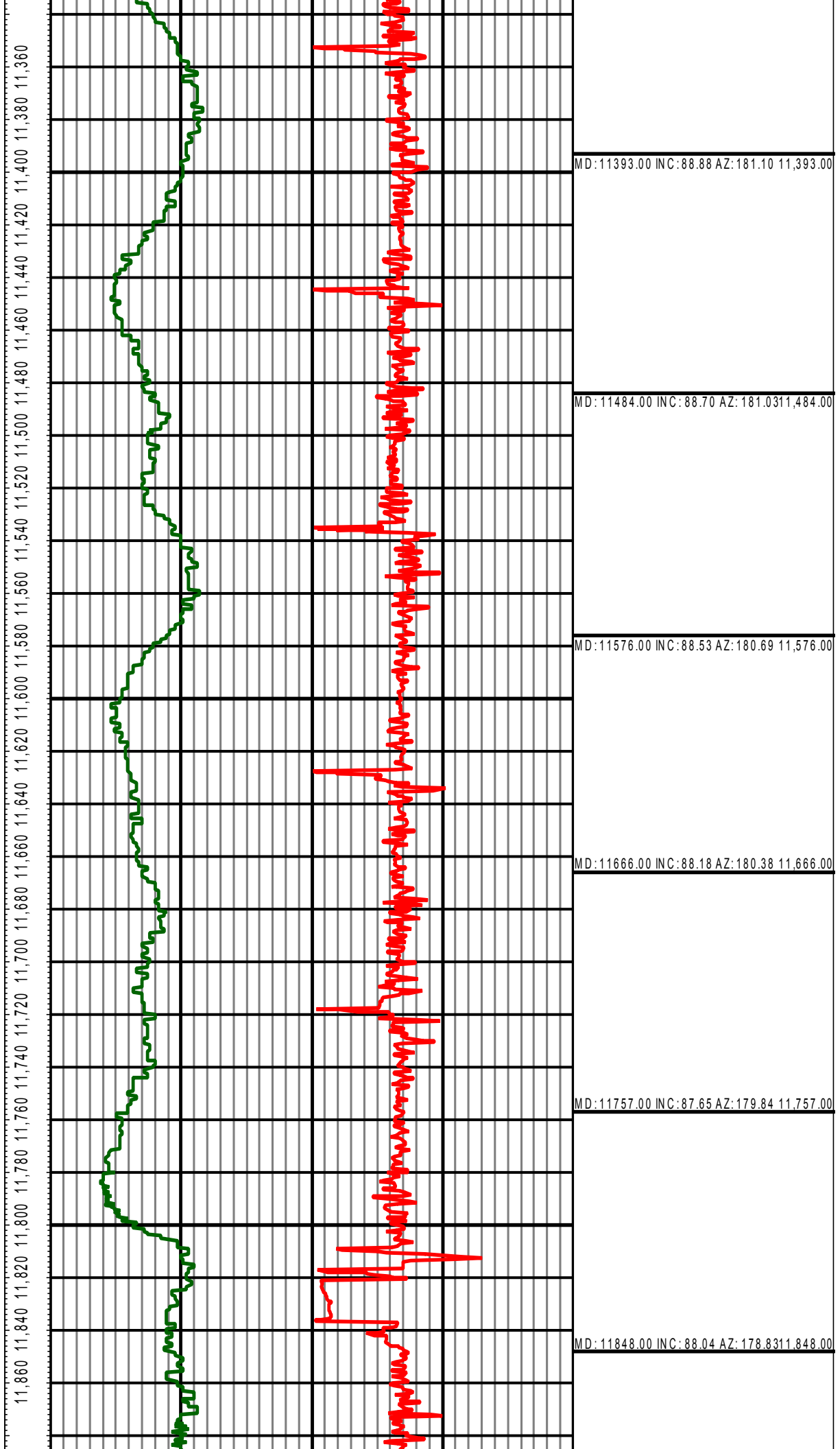
MD:10479.00 INC:90.15 AZ:180.35 10,479.00

MD:10570.00 INC:89.54 AZ:180.3310,570.00

MD:10661.00 INC:89.32 AZ:180.2310,661.00

MD:10753.00 INC:91.34 AZ:179.8210,753.00





MD:11393.00 INC:88.88 AZ:181.10 11,393.00

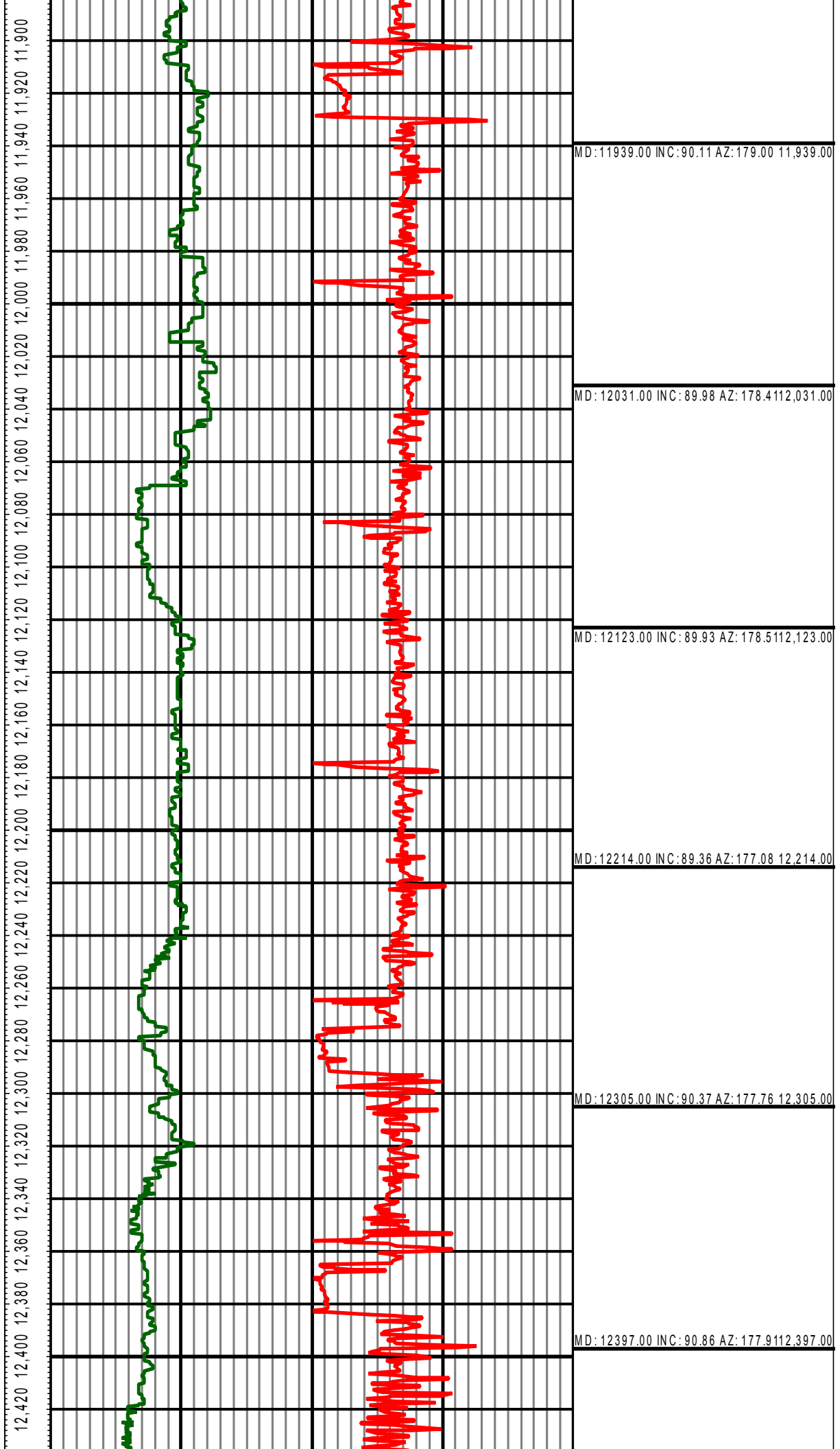
MD:11484.00 INC:88.70 AZ:181.03 11,484.00

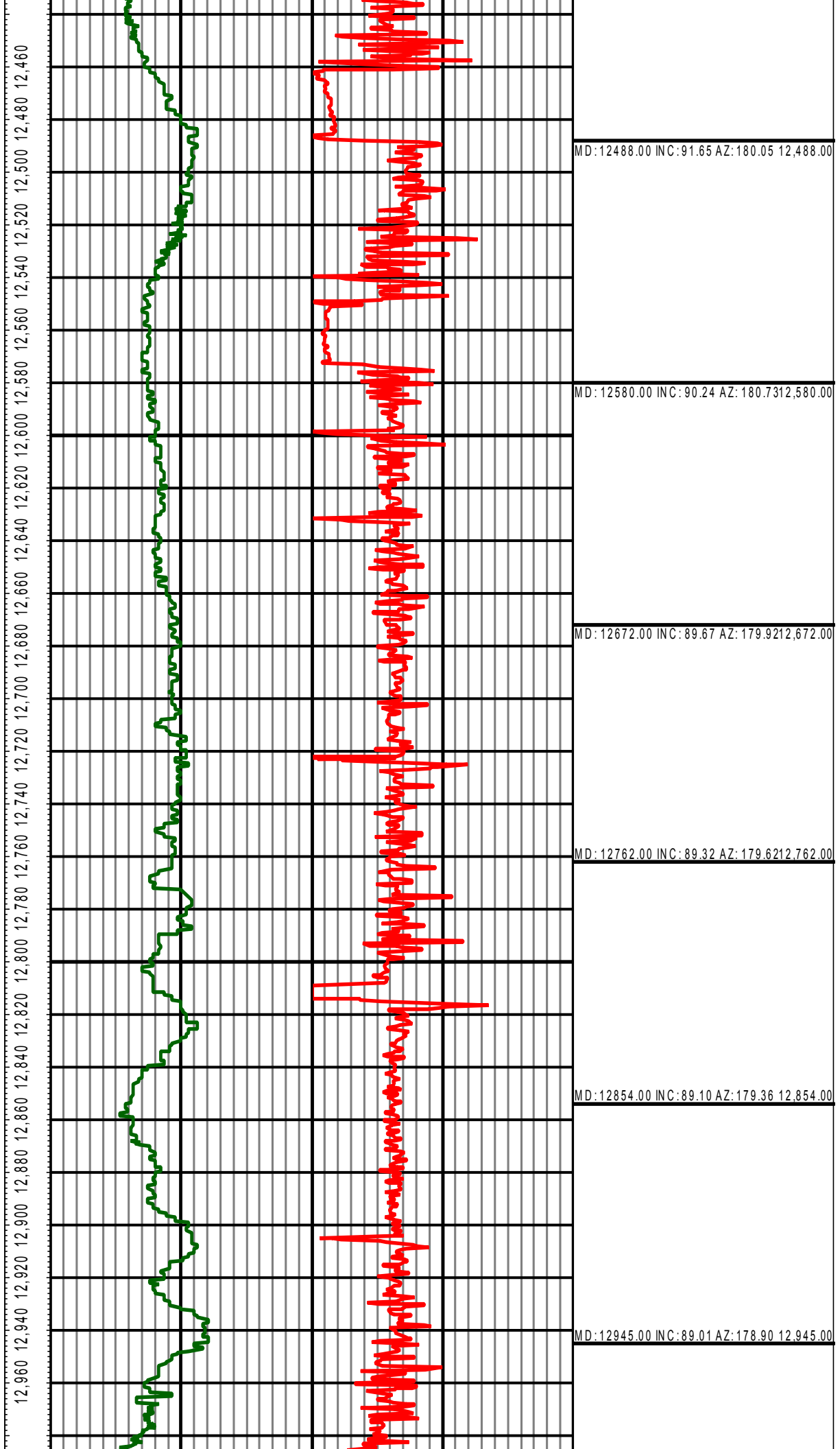
MD:11576.00 INC:88.53 AZ:180.69 11,576.00

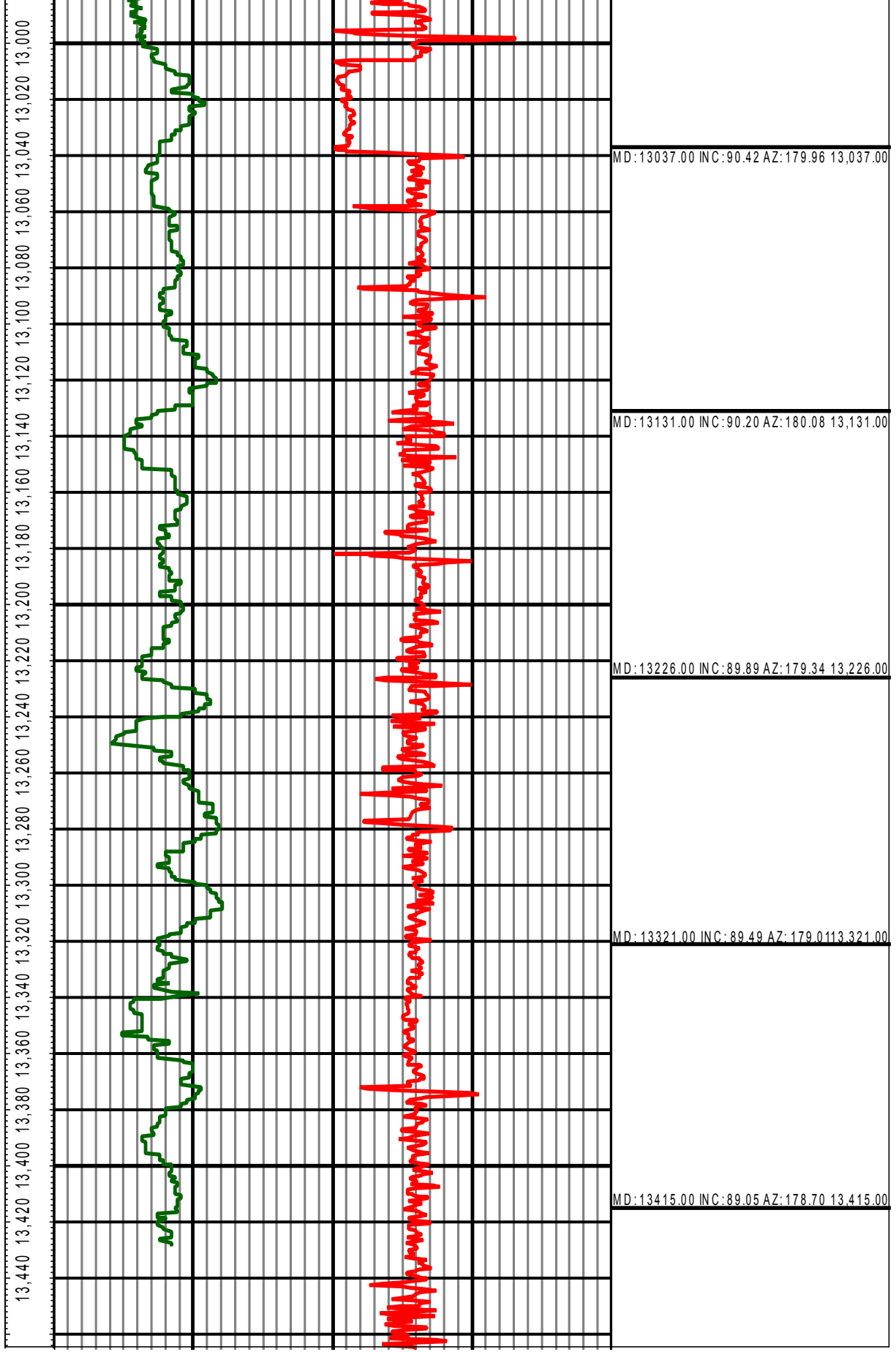
MD:11666.00 INC:88.18 AZ:180.38 11,666.00

MD:11757.00 INC:87.65 AZ:179.84 11,757.00

MD:11848.00 INC:88.04 AZ:178.83 11,848.00







MD 0.00 GR(API) 300.00 0.00 ROP(FT/HR) 861.13 Surveys (MD/INC/AZ)
FT