

WPX ENERGY ROCKY MOUNTAIN LLC-EBUS

PA 321-7

Nabors 574

Post Job Summary

Cement Surface Casing

Date Prepared: 02/25/2014

Submitted by: Grand Junction Cement Engineering

The Road to Excellence Starts with Safety

Sold To #: 300721	Ship To #: 3207600	Quote #: 0021834849	Sales Order #: 0901119985
Customer: WPX ENERGY ROCKY MOUNTAIN LLC-EBUS		Customer Rep:	
Well Name: PA		Well #: 321-7	API/UWI #: 05-045-22230-00
Field: PARACHUTE	City (SAP): PAR	County/Parish: GARFIELD	State: COLORADO
Legal Description: 6-7S-95W-711FSL-789FWL			
Contractor: NABORS DRLG		Rig/Platform Name/Num: NABORS 574	
Job BOM: 7521			
Well Type: DIRECTIONAL GAS			
Sales Person: HALAMERICA\HB50180		Srvc Supervisor: Francisco Castillo	

Job

Formation Name				
Formation Depth (MD)	Top	SURFACE	Bottom	1635
Form Type			BHST	
Job depth MD	1635ft	Job Depth TVD		1635
Water Depth			Wk Ht Above Floor	
Perforation Depth (MD)	From		To	

Well Data

Description	New / Used	Size in	ID in	Weight lbm/ft	Thread	Grade	Top MD ft	Bottom MD ft	Top TVD ft	Bottom TVD ft
Casing		9.625	9.001	32.3			0	1625		
Open Hole Section			13.5				0	1635		

Tools and Accessories

Type	Size in	Qty	Make	Depth ft		Type	Size in	Qty	Make
Guide Shoe	9.625	1	WTF	1625		Top Plug	9.625	1	HES
Float Shoe						Bottom Plug			
Float Collar	9.625	1	WTF	1583		SSR plug set			
Insert Float						Plug Container	9.625	1	HES
Stage Tool						Centralizers	9.625	12	WTF

Miscellaneous Materials

Gelling Agt		Conc		Surfactant		Conc		Acid Type		Qty		Conc	
Treatment Fld		Conc		Inhibitor		Conc		Sand Type		Size		Qty	

Fluid Data

Stage/Plug #: 1									
Fluid #	Stage Type	Fluid Name	Qty	Qty UoM	Mixing Density lbm/gal	Yield ft3/sack	Mix Fluid Gal	Rate bbl/mi n	Total Mix Fluid Gal
1	Fresh Water Spacer	Fresh Water Spacer	20	bbl	8.33			4	
Fluid #	Stage Type	Fluid Name	Qty	Qty UoM	Mixing Density lbm/gal	Yield ft3/sack	Mix Fluid Gal	Rate bbl/mi n	Total Mix Fluid Gal

2	VersaCem Lead	VERSACEM (TM) SYSTEM	248	Sack	12.3	2.38		8	13.77
13.72 Gal		FRESH WATER							
Fluid #	Stage Type	Fluid Name	Qty	Qty UoM	Mixing Density lbm/gal	Yield ft3/sack	Mix Fluid Gal	Rate bbl/min	Total Mix Fluid Gal
3	VersaCem Tail	VERSACEM (TM) SYSTEM	163	Sack	12.8	2.11		7	11.77
11.76 Gal		FRESH WATER							
94 lbm		TYPE I / II CEMENT, BULK (101439798)							
Fluid #	Stage Type	Fluid Name	Qty	Qty UoM	Mixing Density lbm/gal	Yield ft3/sack	Mix Fluid Gal	Rate bbl/min	Total Mix Fluid Gal
4	Displacement	Displacement	124.7	bbl	8.3			10	
Cement Left In Pipe		Amount	42 ft		Reason		Shoe Joint		
Comment									

1.1 Job Event Log

Type	Seq. No.	Activity	Graph Label	Date	Time	Source	DH Density (ppg)	Comb Pump Rate (bbl/min)	PS Pump Press (psi)	Pump Stg Tot (bbl)	Comment
Event	1	Call Out	Call Out	2/15/2014	11:00:00	USER					ON LOCATION AT 17:00 HRS
Event	2	Depart Yard Safety Meeting	Depart Yard Safety Meeting	2/15/2014	13:50:00	USER					NO INJURIES TO REPORT FROM HES PERSONEL
Event	3	Crew Leave Yard	Crew Leave Yard	2/15/2014	14:00:00	USER					
Event	4	Arrive At Loc	Arrive At Loc	2/15/2014	15:00:00	USER					RIG WAS PULLING OUT DRILL PIPE AND STARTED RUNNING CASING AT 17:00 HRS. LANDED CASING AT 20:00 HRS
Event	5	Safety Meeting - Pre Rig-Up	Safety Meeting - Pre Rig-Up	2/15/2014	20:00:00	USER					
Event	6	Rig-Up Equipment	Rig-Up Equipment	2/15/2014	20:10:00	USER					1-ELITE, 2-660FT3 BULK TRUCKS, 2" PUMPING IRON, 9.625" PLUG CONTAINER AND QUICK CONNECT.
Event	7	Rig-Up Completed	Rig-Up Completed	2/15/2014	20:50:00	USER	8.33	0.00	13.00	18.0	
Event	8	Pre-Job Safety Meeting	Pre-Job Safety Meeting	2/15/2014	21:00:00	USER	8.40	0.00	2.00	18.0	ALL HES PERSONEL AND RIG CREW
Event	9	Start Job	Start Job	2/15/2014	21:27:30	USER	8.31	0.00	-3.00	0.0	TD-1635', OH-13.5", TP-1625', SJ-42', FC-1583', CSG-9.625", 32.3#, H-40, MUD-10.4PPG, FV-75,PV-31, YP-26, pH-9, TEMP-80 DEG.
Event	10	Other	Fill Lines	2/15/2014	21:28:26	COM5	8.29	0.80	-2.00	0.1	2bbbs at 2bpm with 61 psi
Event	11	Test Lines	Stall Out	2/15/2014	21:30:03	COM5	8.48	0.00	1651.00	2.0	PRESSURE HELD AT 1878 PSI
Event	12	Other	Test Lines	2/15/2014	21:31:44	COM5	8.42	0.00	3982.00	2.0	PRESSURE HELD AT 4042 PSI
Event	13	Pump Spacer 1	Pump Water Spacer	2/15/2014	21:35:20	COM5	8.40	1.80	62.00	0.3	20 BBLS AT 4 BPM WITH 103 PSI
Event	14	Pump Lead Cement	Pump Lead Cement	2/15/2014	21:43:13	COM5	10.92	4.10	131.00	1.0	1ST 50 BBLS AT 8 BPM WITH 275 PSI. LAST 55 BBLS AT 7 BPM WITH 223 PSI
Event	15	Pump Tail Cement	Pump Tail Cement	2/15/2014	21:59:08	COM5	12.61	7.00	234.00	0.9	61 BBLS AT 7 BPM WITH

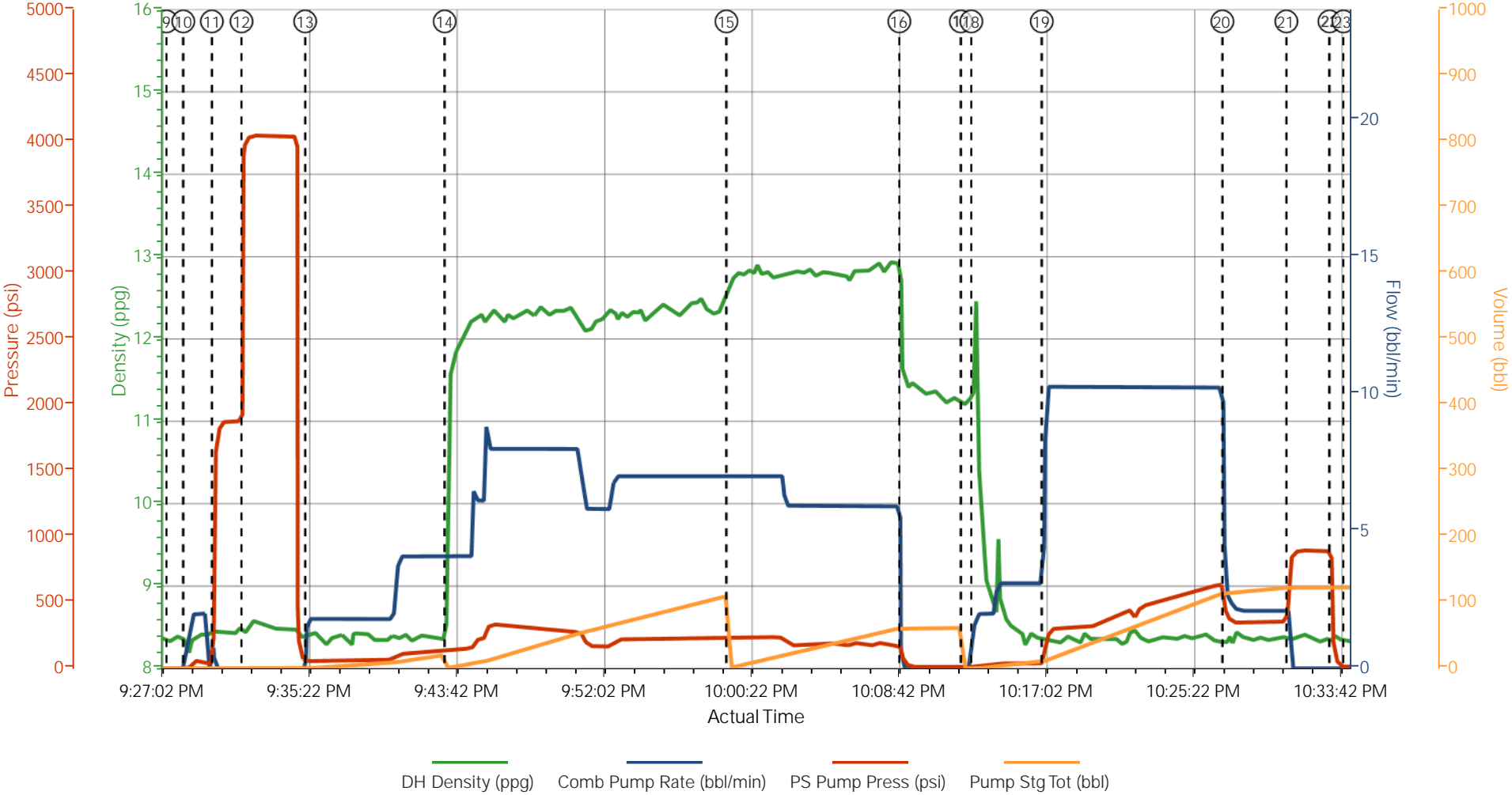
185 PSI										
Event	16	Other	Shutdown	2/15/2014	22:08:54	COM5	11.52	0.00	70.00	61.4
Event	17	Pump Displacement	Drop Plug	2/15/2014	22:12:22	COM5	11.23	0.00	11.00	0.0
Event	18	Pump Displacement	Pump Displacement	2/15/2014	22:12:58	COM5	12.09	1.60	20.00	0.2
Event	19	Other	Displacement / Pick Up Rate	2/15/2014	22:16:57	COM5	8.34	10.10	137.00	11.5
Event	20	Other	Slow Rate	2/15/2014	22:27:09	COM5	8.27	2.80	424.00	115.2
Event	21	Other	Bump Plug	2/15/2014	22:30:46	COM5	8.37	0.00	795.00	122.9
Event	22	Bump Plug	Check Floats	2/15/2014	22:33:12	COM5	8.44	0.00	217.00	122.9
Event	23	End Job	End Job	2/15/2014	22:34:00	COM5	8.37	0.00	8.00	122.9
Event	24	Safety Meeting - Pre Rig-Down	Safety Meeting - Pre Rig-Down	2/15/2014	22:40:00	USER				
Event	25	Rig-Down Completed	Rig-Down Completed	2/15/2014	23:50:00	USER				
Event	26	Depart Location Safety Meeting	Depart Location Safety Meeting	2/15/2014	23:55:00	USER				
Event	27	Crew Leave Location	Crew Leave Location	2/16/2014	00:01:00	USER				
Event	28	Other	Other	2/16/2014	00:02:00	USER				

VERIFIED BY CUSTOMER
AND DRILLER1ST 10 BBLS AT 2 BPM
WITH 54 PSI104 BBLS FRESH WATER AT
10 BPM WITH 413 PSI10 BBLS AT 2 BPM WITH
356 PSI124 BBLS TOTAL TO BUMP
WITH 840 PSIFLOATS HELD. 1.5 BBLS
FLOW BACK TO
DISPLACEMENT TANK.CIRCULATED 30 BBLS / 71
SKS OF CEMENT TO
SURFACE / USED 40 LBS
SUGAR IN THE CELLAR.

ALL HES PERSONELL

NO INJURIES TO REPORT BY
HES PERSONELTHANK YOU FOR YOUR
BUSINESS FROM JAVIER
CASTILLO AND CREW

WPX PA 321-7 SURFACE



- | | | | | |
|--|--|---|---|----------------------------------|
| • Call Out n/a;n/a;n/a;n/a | • Rig-Up Equipment n/a;n/a;n/a;n/a | • Stall Out 8.48;0;1651;2 | • Shutdown 11.52;0;70;61.4 | 21 Bump Plug 8.36 |
| • Depart Yard Safety Meeting n/a;n/a;n/a;n/a | • Rig-Up Completed 8.33;0;13;18 | • Test Lines 8.42;0;3989;2 | • Drop Plug 11.23;0;11;0 | 22 Check Floats 8.4 |
| • Crew Leave Yard n/a;n/a;n/a;n/a | • Pre-Job Safety Meeting 8.4;0;2;18 | • Pump Water Spacer 8.4;1.8;62;0.3 | • Pump Displacement 12.09;1.6;20;0.2 | 23 End Job 8.37;0;E |
| • Arrive At Loc n/a;n/a;n/a;n/a | • Start Job 8.31;0;-3;0 | • Pump Lead Cement 11.15;4.1;133;1 | • Displacement / Pick Up Rate 8.35;10.2;162;11.7 | 24 Safety Meeting |
| • Safety Meeting - Pre Rig-Up n/a;n/a;n/a;n/a | • Fill Lines 8.29;0.8;-2;0.1 | • Pump Tail Cement 12.61;7;233;1 | 20 Slow Rate 8.27;2.8;424;115.2 | 25 Rig-Down Comp |

WPX PA 321-7 SURFACE

