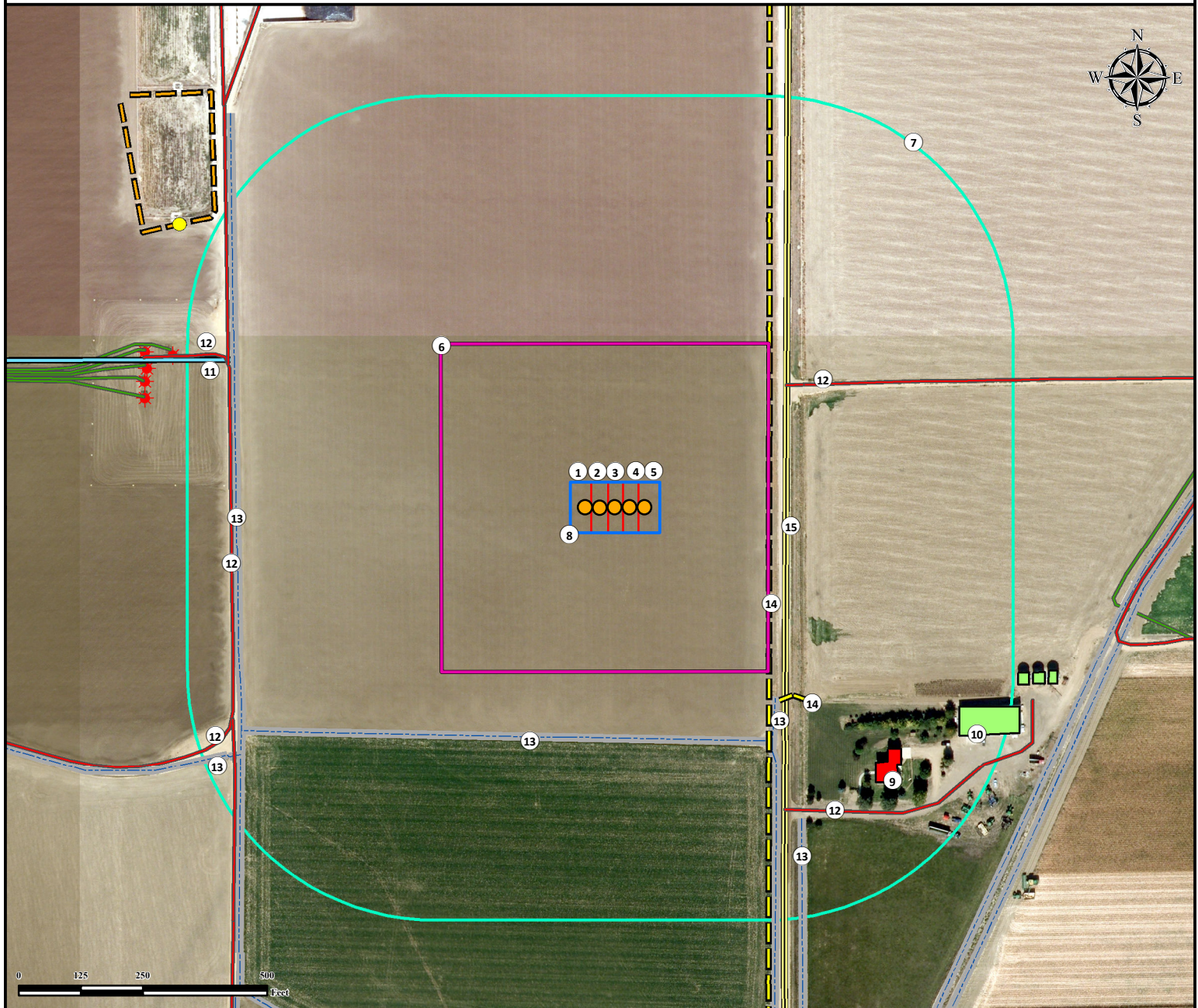


# Location Drawing

## D O U T H I T 4 1 C - 2 7 H Z

### Horizontal Multi Well Pad

SE¼ NE¼ SECTION 26, TOWNSHIP 3 NORTH, RANGE 68 WEST OF THE 6TH PRINCIPAL MERIDIAN



1. Proposed Well DOUTHIT 26C-27HZ.
2. Proposed Well DOUTHIT 1N-27HZ.
3. Proposed Well DOUTHIT 41C-27HZ.
4. Proposed Well DOUTHIT 8N-27HZ.
5. Proposed Well DOUTHIT 40C-27HZ.
6. Operational Disturbance Area.

7. 500' Buffer.
8. Pump Jack Operational Area.
9. Building Unit is ±731' SE.
10. Building is ±798' SE.
11. Ditch is ±828' NW.

12. Private Roads are ±424' NE, ±697' SE, ±773' W, ±830' NW, and ±879' SW.
13. Concrete Ditches are ±463' S, ±498' SE, ±728' W, ±730' SE, and ±899' SW.
14. Powerlines are ±309' E and ±509' SE.
15. County Road 11 is ±343' E.

<b>Legend</b>	Proposed Well Light Pole Existing Well Public Road	500' Radius Disturbance Area Pump Jack Operations Area Building Unit Building	Private Road Ditch Concrete Ditch Fence Powerline Pipeline	<b>Reference Location</b> ** All measurements are made from Reference Well DOUTHIT 41C-27HZ ** Lat: 40.200245° Long:-104.961827° (NAD83) Elevation: 4942 Feet Surface Use: Irrigated Crop Nearest Building Unit: ±731' SE
---------------	-------------------------------------------------------------	-------------------------------------------------------------------------------------------	---------------------------------------------------------------------------	------------------------------------------------------------------------------------------------------------------------------------------------------------------------------------------------------------------------------------------



Use our resources to find yours!  
[www.petro-fs.com](http://www.petro-fs.com)  
(303) 928-7128

Field Date: 11/20/2013  
Drafting Date: 03/18/2014  
Drafter: SMG  
Revision: 2

Data Sources:  
- Aerial courtesy of Anadarko Petroleum Corporation (2010)

Prepared for:  
**Anadarko**  
Petroleum Corporation  
**KERR-MCGEE OIL & GAS ONSHORE LP**