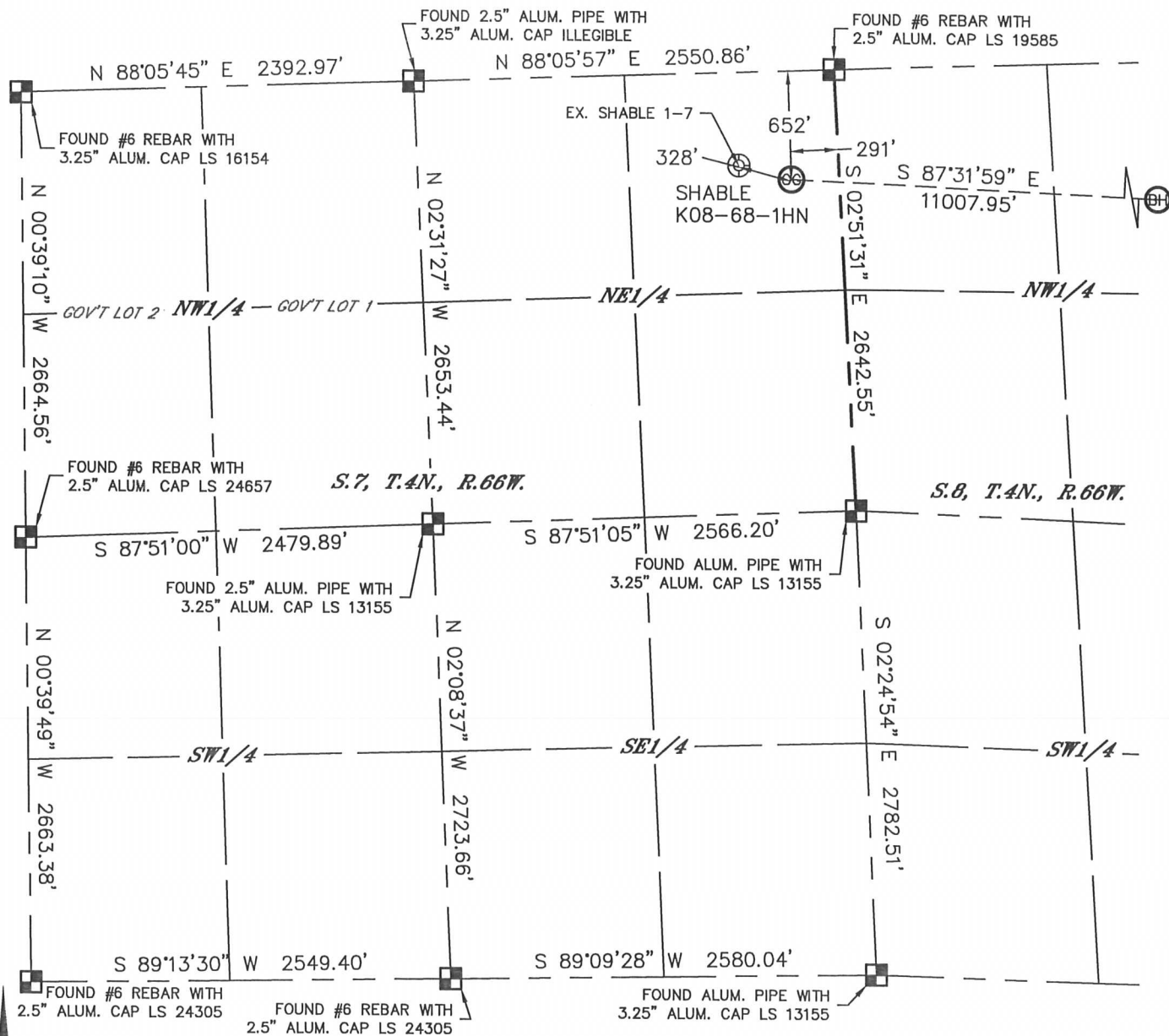


Lat40°, Inc. 1635 Foxtrail Drive, Suite 325 Loveland, CO 970-776-3321

WELL LOCATION CERTIFICATE

THIS MAP DOES NOT REPRESENT A BOUNDARY SURVEY

SECTION: 7
TOWNSHIP: 4N
RANGE: 66W



In accordance with a request from Cody Ball with Noble Energy Inc., Lat40, Inc. has determined the surface location of the SHABLE K08-68-1HN to be 652' from the NORTH line and 291' from the EAST line as measured at right angles from the section lines of Section 7, Township 4 North, Range 66 West, and the bottom hole to be 990' from the NORTH line and 75' from the EAST line as measured at right angles from the section lines of Section 9, Township 4 North, Range 66 West of the Sixth Principal Meridian, County of Weld, State of Colorado.

I hereby state that this Well Location Certificate was prepared by me, or under my direct supervision, that the fieldwork was completed on 5/17/2013, for and on behalf of Noble Energy Inc. That this is not a Land Survey Plat or an Improvement Survey Plat, and that it is not to be relied upon for establishment of fence, building, or other future improvement lines.

NOTE:

1) Bearings shown are Grid Bearings of the Colorado State Plane Coordinate System, North Zone, North American Datum 1983/2007. The lined dimensions as contained herein are based upon the "U.S. Survey Foot."

2) Ground elevations are based on an observed GPS elevation (NAVD 1988 DATUM).
3) IMPROVEMENTS: See LOCATION DRAWING for all visible improvements within 500' of disturbed area.

4) SURFACE USE: CROPLAND

5) INSTRUMENT OPERATOR: WYATT HALL

6) NEAREST EXISTING WELL: SHABLE 1-7, 328'
NEAREST CULTURAL ITEMS:

BUILDING: 819' NW

BUILDING UNIT: 918' NW

HIGH OCCUPANCY BUILDING UNIT: 5280'+

DESIGNATED OUTSIDE ACTIVITY AREA: 5280'+

PUBLIC ROAD: 677' S (HWY 60)

ABOVEGROUND UTILITY: 637' S

RAILROAD: 1192' SE

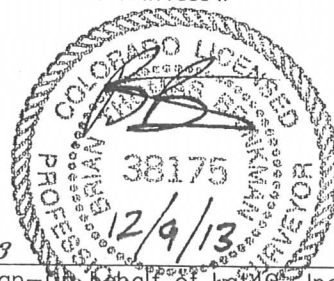
PROPERTY LINE: 291' E

SURFACE LOCATION


LAT: 40.33236°N
LONG: 104.81301°W
PDOP: 1.1
ELEV: 4715'
1/4,1/4: NE1/4NE1/4

BOTTOM HOLE

LAT: 40.33082°N
LONG: 104.77358°W



LEGEND

 = ALIQUOT MONUMENT AS DESCRIBED
 = CALCULATED POSITION

SHEET 1 OF 3

Brian T. Brinkman—On Behalf of lat40, Inc.

Colorado Licensed Professional Land Surveyor No. 38175 DATE: 12/09/2013 PROJECT#: 2013063

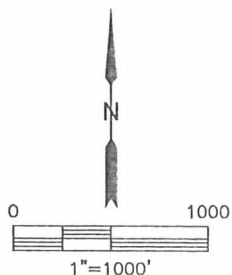
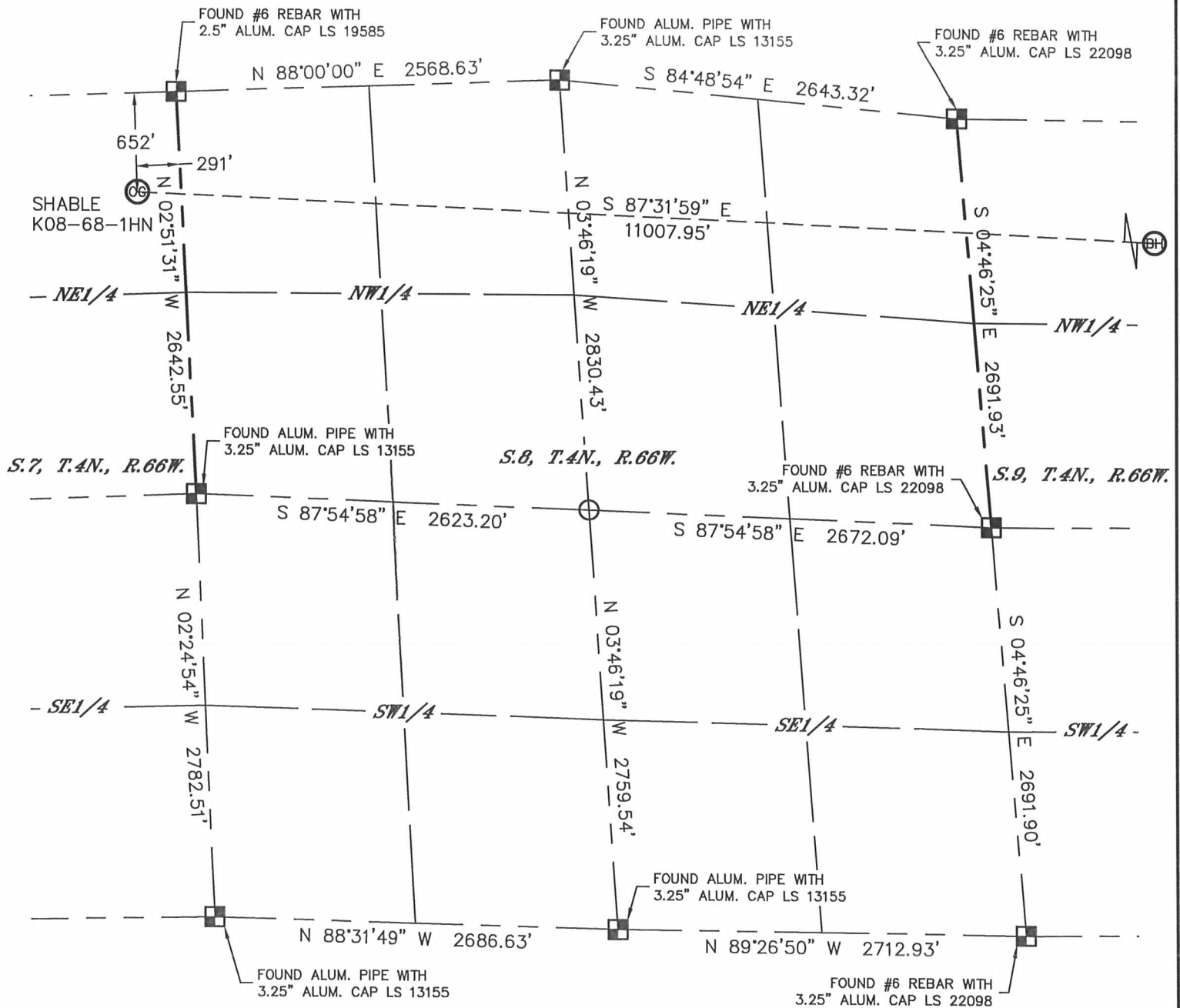


Lat40°, Inc. 1635 Foxtrail Drive, Suite 325 Loveland, CO 970-776-3321

WELL LOCATION CERTIFICATE

THIS MAP DOES NOT REPRESENT A BOUNDARY SURVEY

SECTION: 7
TOWNSHIP: 4N
RANGE: 66W



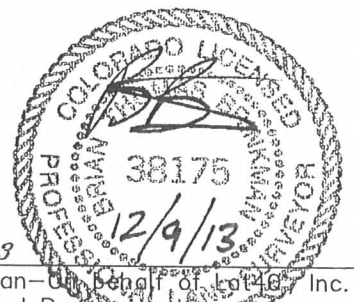
LEGEND

- = ALIQUOT MONUMENT AS DESCRIBED
- = CALCULATED POSITION

SHEET 2 OF 3

Brian T. Brinkman—On Behalf of Lat40°, Inc.

Colorado Licensed Professional Land Surveyor No. 38175 DATE: 12/09/2013 PROJECT#: 2013063



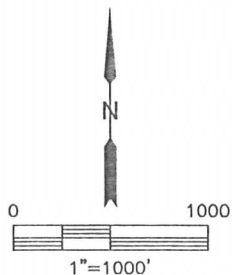
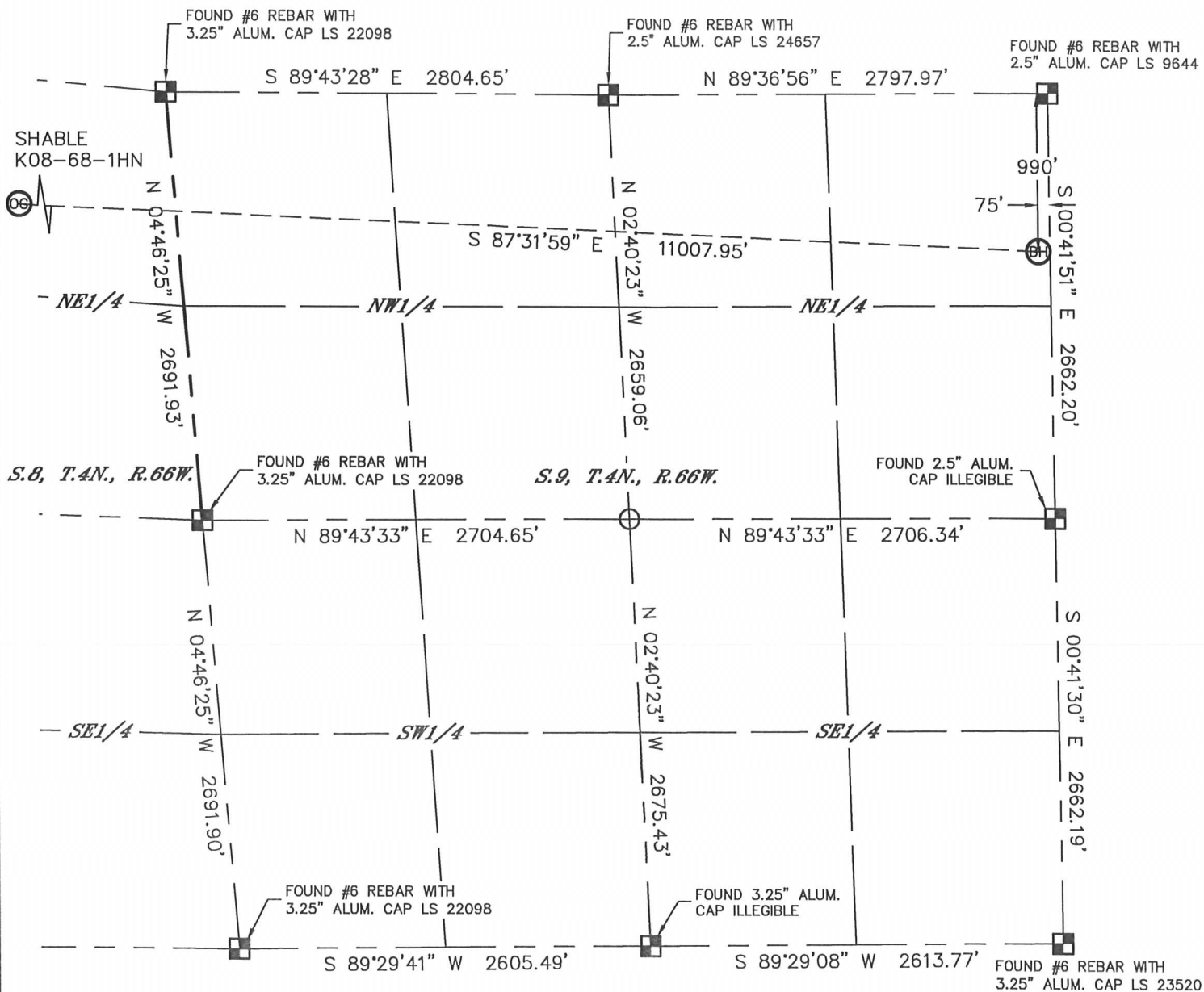


Lat40°, Inc. 1635 Foxtrail Drive, Suite 325 Loveland, CO 970-776-3321

WELL LOCATION CERTIFICATE

THIS MAP DOES NOT REPRESENT A BOUNDARY SURVEY

SECTION: 7
TOWNSHIP: 4N
RANGE: 66W



LEGEND

- = ALIQUOT MONUMENT AS DESCRIBED
- = CALCULATED POSITION

SHEET 3 OF 3

Brian T. Brinkman—On Behalf of Lat40°, Inc.

Colorado Licensed Professional Land Surveyor No. 38175
DATE: 12/09/2013
PROJECT#: 2013063



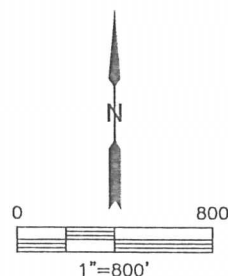
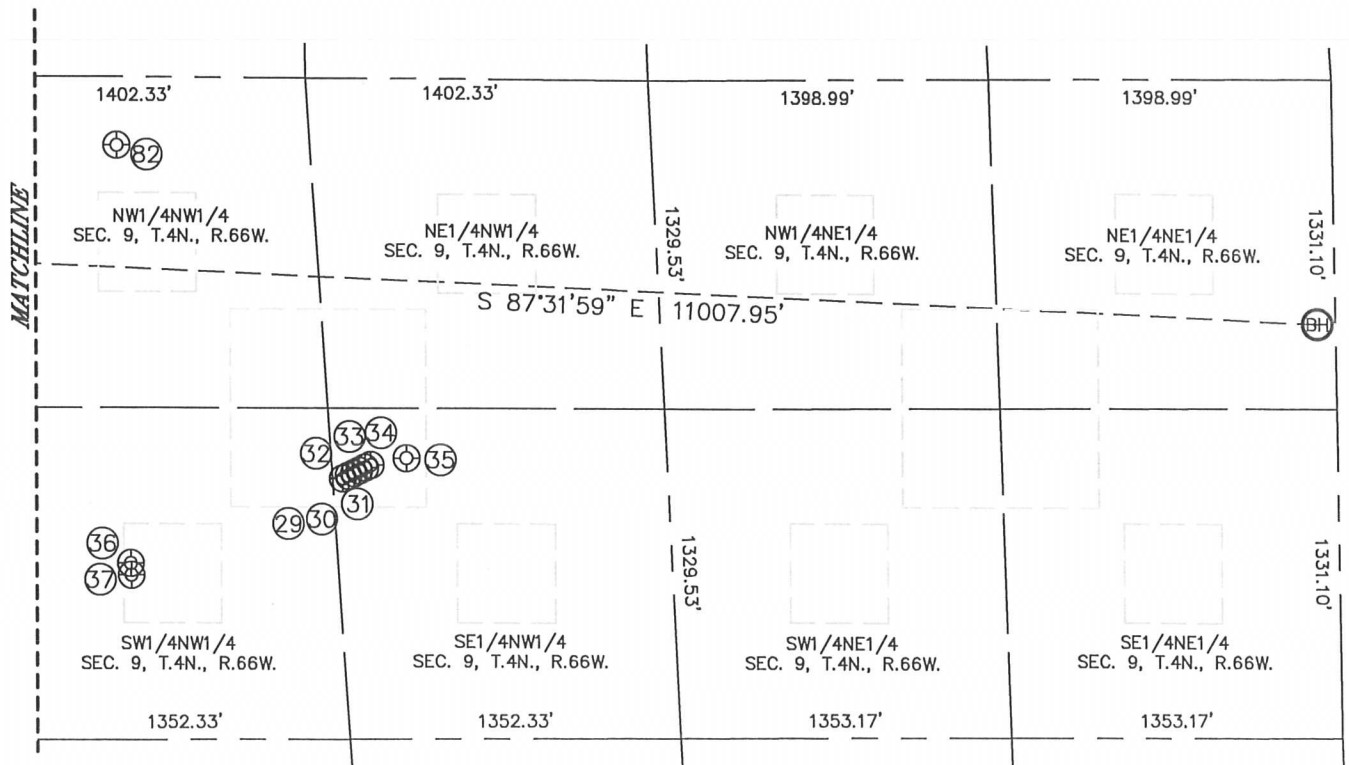
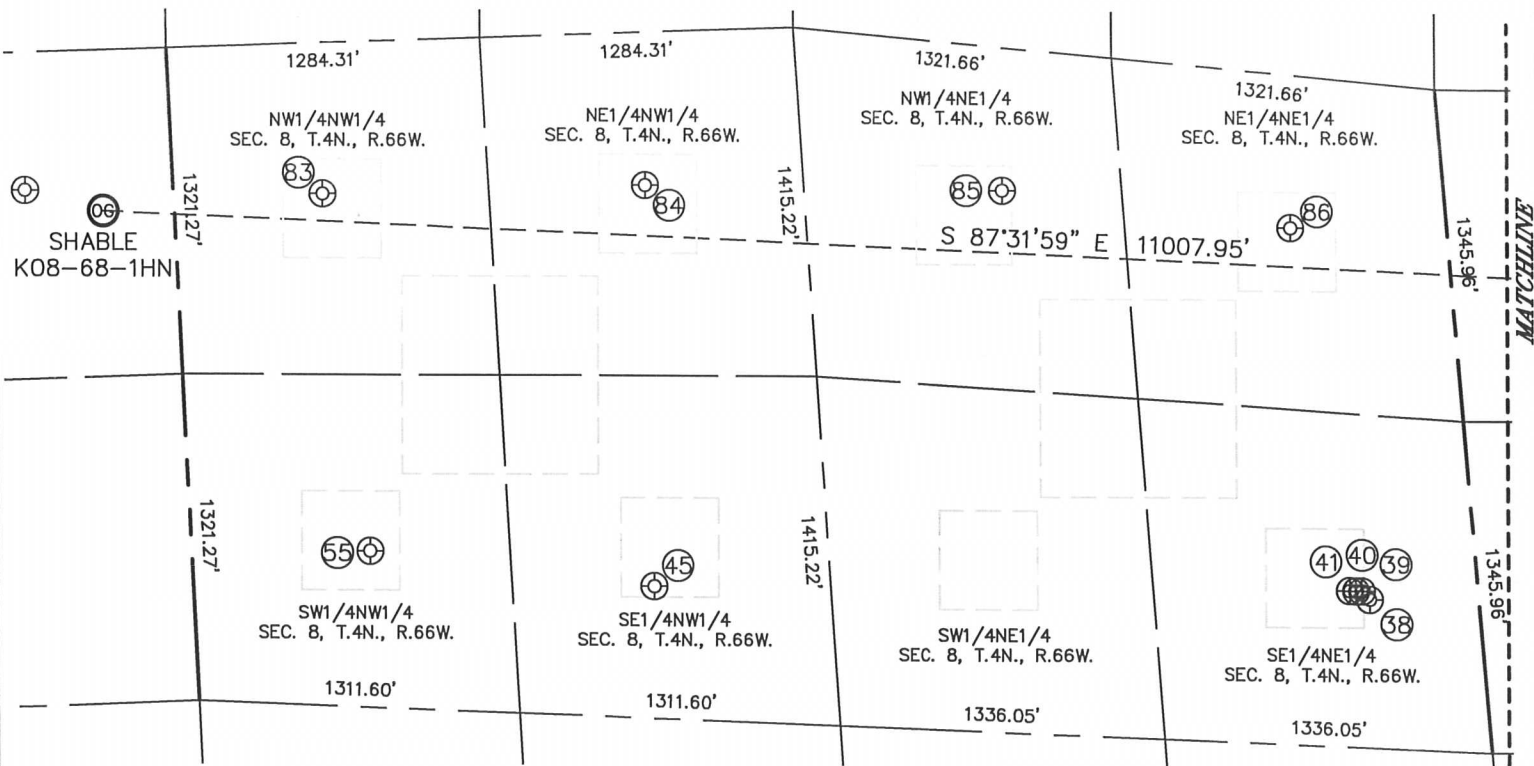


Lat40°, Inc. 1635 Foxtrail Drive, Suite 325 Loveland, CO 970-776-3321

SITE SKETCH

SHABLE K08-68-1HN

SECTION: 7
TOWNSHIP: 4N
RANGE: 66W





Lat40°, Inc. 1635 Foxtrail Drive, Suite 325 Loveland, CO 970-776-3321

SITE SKETCH

SHABLE K08-68-1HN

SECTION: 7
TOWNSHIP: 4N
RANGE: 66W

WELL NO.	WELL NAME	SHL FOOTAGE				SHL LAT°	SHL LONG°	PDOP	ELEV (FT.)	1/4/1/4
29	FIVE RIVERS USX K09-19	1617	FNL	1409	FWL	40.32915	-104.78791	1.8	4699	SENW
30	FIVE RIVERS USX K09-24D	1607	FNL	1433	FWL	40.32918	-104.78783	2.0	4699	SENW
31	FIVE RIVERS USX K09-21D	1595	FNL	1456	FWL	40.32921	-104.78775	1.8	4699	SENW
32	FIVE RIVERS USX K09-07D	1584	FNL	1479	FWL	40.32924	-104.78767	1.8	4698	SENW
33	FIVE RIVERS USX K09-18D	1573	FNL	1503	FWL	40.32927	-104.78758	1.8	4699	SENW
34	FIVE RIVERS USX K09-02D	1562	FNL	1526	FWL	40.32930	-104.78750	1.8	4699	SENW
35	UPRC 9-316	1533	FNL	1675	FWL	40.32938	-104.78697	1.8	4699	SENW
36	FIVE 31-9	1965	FNL	513	FWL	40.32823	-104.79104	1.6	4699	SWNW
37	MONFORT 5-9	2014	FNL	512	FWL	40.32810	-104.79103	1.5	4699	SWNW
38	MONFORT GILCREST K 8-8	2080	FNL	443	FEL	40.32799	-104.79445	1.7	4698	SENE
39	FIVE RIVERS K08-17D	2050	FNL	472	FEL	40.32808	-104.79457	1.7	4698	SENE
40	FIVE RIVERS K08-22D	2051	FNL	497	FEL	40.32808	-104.79466	1.8	4698	SENE
41	FIVE RIVERS K08-07D	2053	FNL	521	FEL	40.32808	-104.79474	1.8	4698	SENE
45	ED KAM 2-23	2241	FNL	1880	FWL	40.32816	-104.80498	1.4	4703	SENW
55	ED KAM 1-21	2061	FNL	727	FWL	40.32857	-104.80914	1.9	4717	SWNW
82	KEITH 1	277	FNL	602	FWL	40.33286	-104.79118	1.8	4693	NWNW
83	SHABLE R K 8-4	611	FNL	609	FWL	40.33254	-104.80978	2.0	4715	NWNW
84	SHABLE K 8-3	619	FNL	1926	FWL	40.33261	-104.80506	1.4	4714	NENW
85	KAMMERZELL 2-8	577	FNL	1794	FEL	40.33253	-104.79976	1.8	4698	NWNE
86	KAMMERZELL 1-8	614	FNL	634	FEL	40.33211	-104.79555	2.1	4698	NENE