

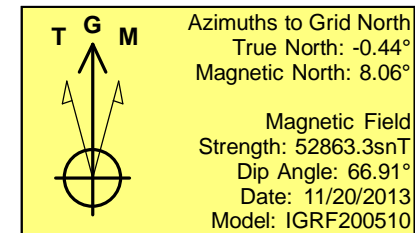
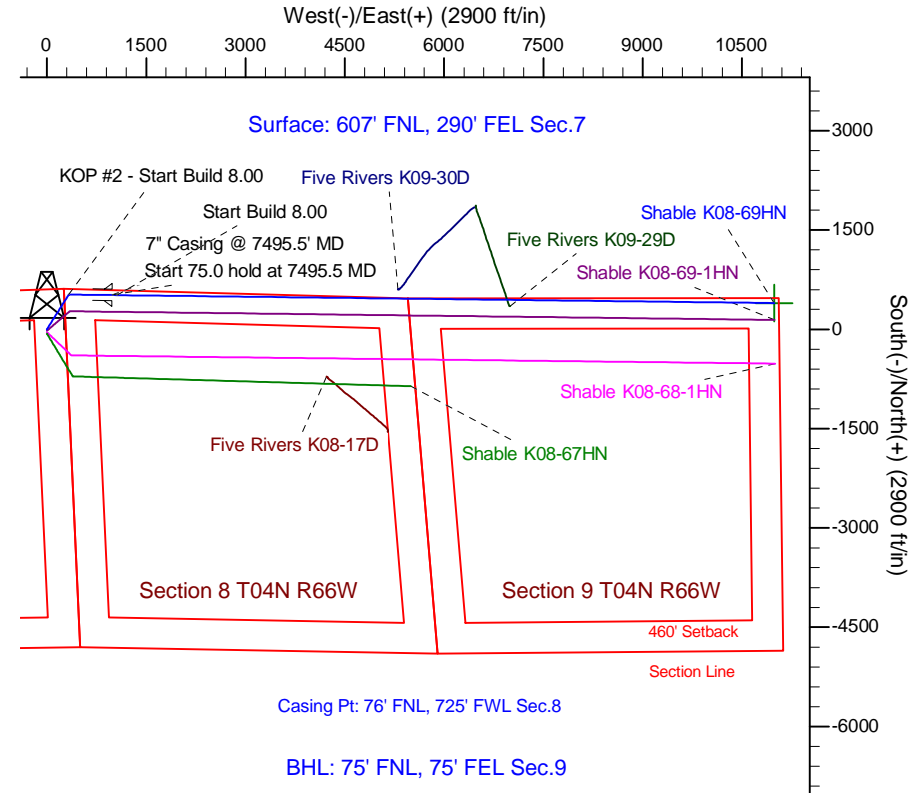
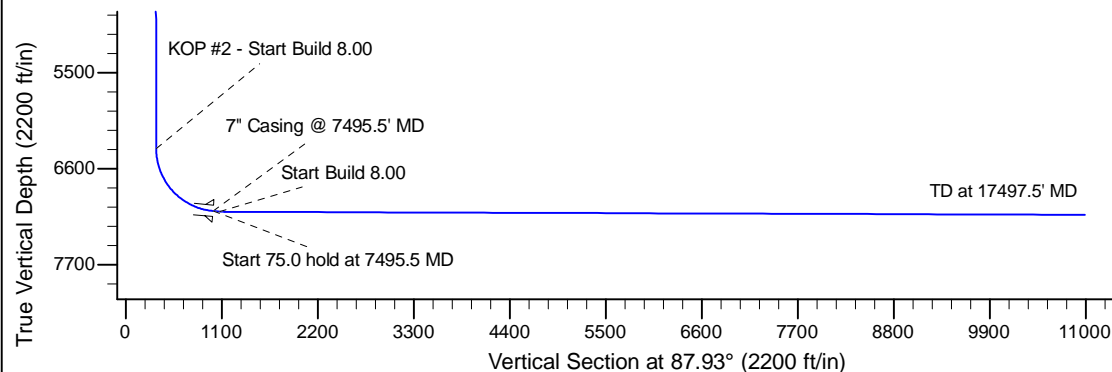
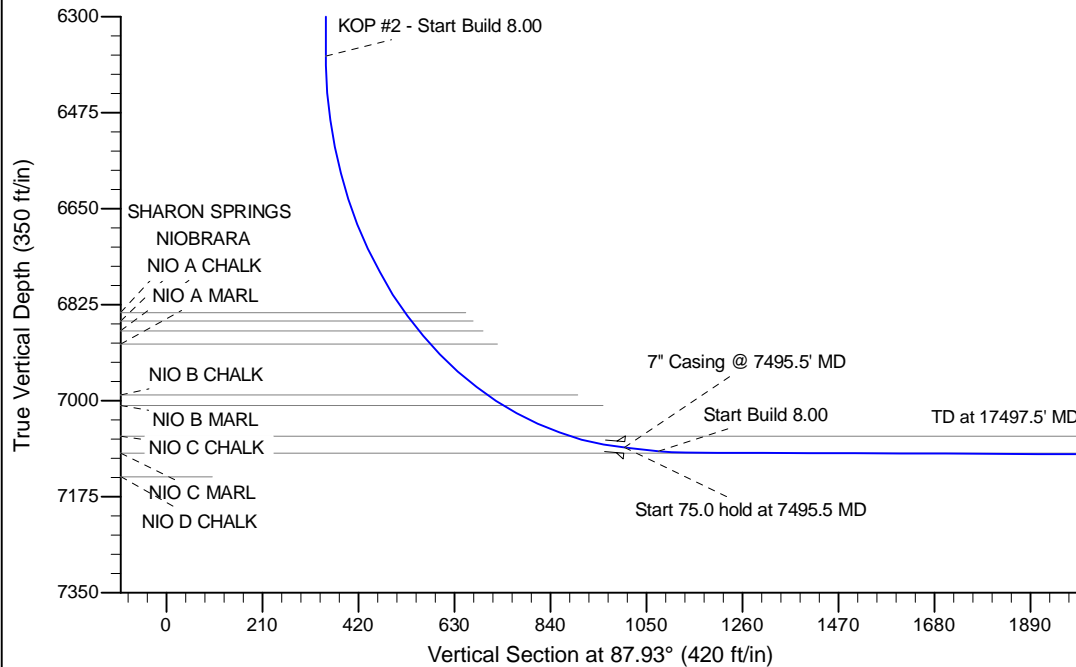
Project: Wattenberg Field
 Site: K (Sec.7-T04N-R66W) Weld County, CO
 Well: Shable K08-69HN
 Wellbore: Original Drilling
 Design: APD - Rev 0

Northern Region Drilling - Working

Geodetic System: US State Plane 1983
 Datum: North American Datum 1983
 Ellipsoid: GRS 1980
 Zone: Colorado Northern Zone
 System Datum: Mean Sea Level

SECTION DETAILS

Sec	MD	Inc	Azi	TVD	+N/-S	+E/-W	Dleg	TFace	VFace	Target
1	0.0	0.00	0.00	0.0	0.0	0.0	0.00	0.00	0.0	
2	1500.0	0.00	0.00	1500.0	0.0	0.0	0.00	0.00	0.0	
3	2099.9	12.00	32.15	2095.5	53.0	33.3	2.00	32.15	35.2	
4	4480.9	12.00	32.15	4424.5	472.0	296.7	0.00	0.00	313.6	
5	5080.8	0.00	0.00	5020.0	525.0	330.0	2.00	180.00	348.8	
6	6433.0	0.00	0.00	6372.2	525.0	330.0	0.00	0.00	348.8	
7	7495.5	85.00	90.69	7085.7	517.2	983.7	8.00	90.69	1001.8	
8	7570.5	85.00	90.69	7092.2	516.3	1058.4	0.00	0.00	1076.4	
9	7630.5	89.80	90.69	7095.0	515.5	1118.4	8.00	0.00	1136.3	
10	17497.5	89.80	90.69	7129.4	397.2	10984.6	0.00	0.00	10991.8	Shable K08-69HN BHL 75'FNL, 75'FEL



WELL DETAILS: Shable K08-69HN					
Ground Level: 4715.0					
0.0	0.0	1364705.13	3191522.48	40.332480	-104.813010
Plan: APD - Rev 0 (Shable K08-69HN/Original Drilling)					
Created By: Shailey Jewell			Date: 10:57, March 05 2014		
OK to submit with 2A as per Noble Drilling 4/01/2014 7:05					