

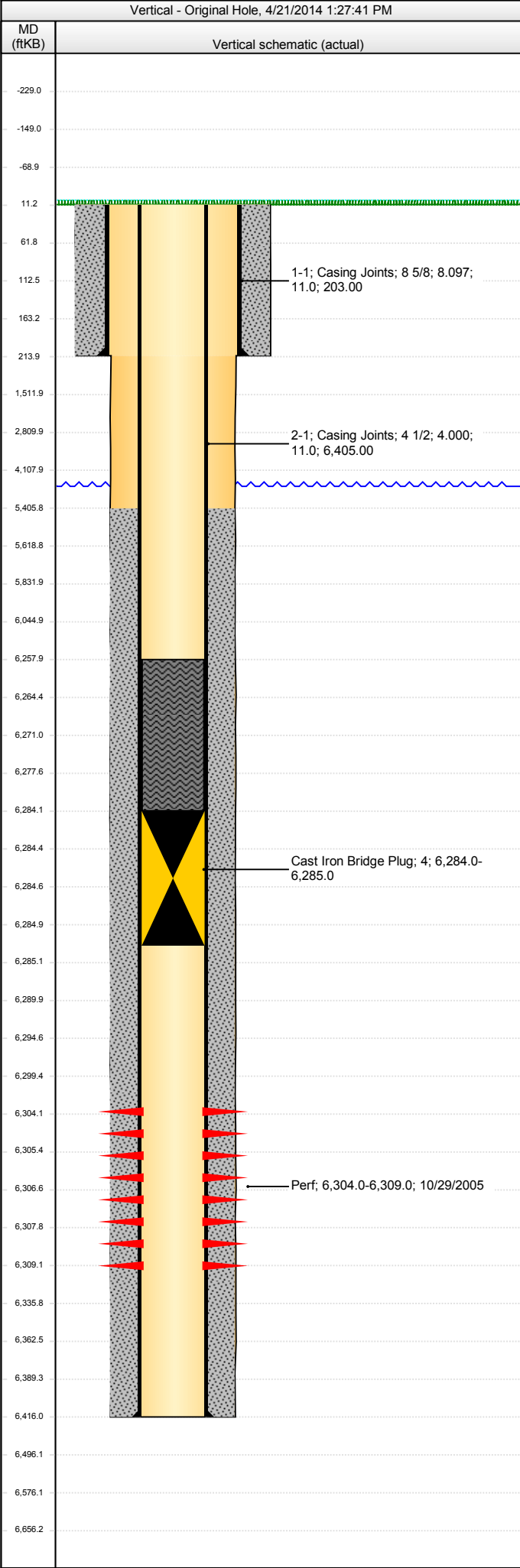


Whiting Oil & Gas Corp
1700 Broadway, Suite 2300
Denver, CO 80290
(303) 837-1661

WOGC Well History Schematic Report

Well Name: MADDY 2

API Number 051232330200		WPC ID			Well Permit Number			Field Name Mitigation-DJ Basin			County Weld			State CO	
Well Configuration Type Vertical				Orig KB Elv (ft) 4,699.00		Ground Elevation (ft) 4,688.00		Casing Flange Elevation (ft)			Tubing Head Elevation (ft)		Total Depth (ft)KB 6,416.0		
Original Spud Date 10/25/2005		Completion Date 10/29/2005		Asset Group Redtail Asset Group				Responsible Engineer James Kopp			N/S Dist (ft) 960.0		N/S Ref FSL	E/W Dist (ft) 1,980.0	E/W Ref FWL
Lot	Quarter 1 SE	Quarter 2 SW	Quarter 3	Quarter 4	Section 31	Section Suffix	Section Type	Township 10	Township N/S Dir N	Range 57	Range E/W Dir W	Meridian 6TH			



Jobs

Job Type		Start Date	Summary	
Drill & Complete		10/25/2005		
PlugBack		10/4/2010		

Perforations

Type of Hole		Date	Top (ftKB)	Btm (ftKB)
		10/29/2005	6,304.0	6,309.0

Stim/Treat Stages

Stage Type	Start Date	Top (ftKB)	Btm (ftKB)	Stim/Treat Fluid	Vol Clean Pump (bbl)

Wellbore Sections

Section Des	Wellbore Name	Size (in)	Act Top (ftKB)	Act Btm (ftKB)	Start Date
Surface	Original Hole	12 1/4	11.0	214.0	10/25/2005
Production	Original Hole	7 7/8	214.0	6,416.0	10/25/2005

Surface Csg, 214.0ftKB

Comment

OD (in)	Wt (lb/ft)	Grade	Top (ftKB)	Btm (ftKB)	Len (ft)	Item Des
8 5/8	24.00	J-55	11.0	214.0	203.00	Casing Joints

Production Csg, 6,416.0ftKB

Comment

OD (in)	Wt (lb/ft)	Grade	Top (ftKB)	Btm (ftKB)	Len (ft)	Item Des
4 1/2	11.60	J-55	11.0	6,416.0	6,405.00	Casing Joints

Cement Stages

Des	Top (ftKB)	Btm (ftKB)	Top Meas Meth	Pump Start Date
Surface Casing Cement	11.0	214.0		10/28/2005
Production Casing Cement	5,406.0	6,416.0		10/29/2005
Cement Plug	6,258.0	6,284.0		10/4/2010

Other In Hole

Des	OD (in)	ID (in)	Run Date	Top (ftKB)	Btm (ftKB)
Cast Iron Bridge Plug	4		10/4/2010	6,284.0	6,285.0

<des> set at <depth>ftKB on <dtmrun>

Set Depth (ftKB)	Comment	Run Date	Pull Date		
Item Des		OD (in)	Len (ft)	Top (ftKB)	Btm (ftKB)

<des> on <dtmrun>

Rod Description			Run Date		
Item Des		OD (in)	Len (ft)	Top (ftKB)	Btm (ftKB)

Com