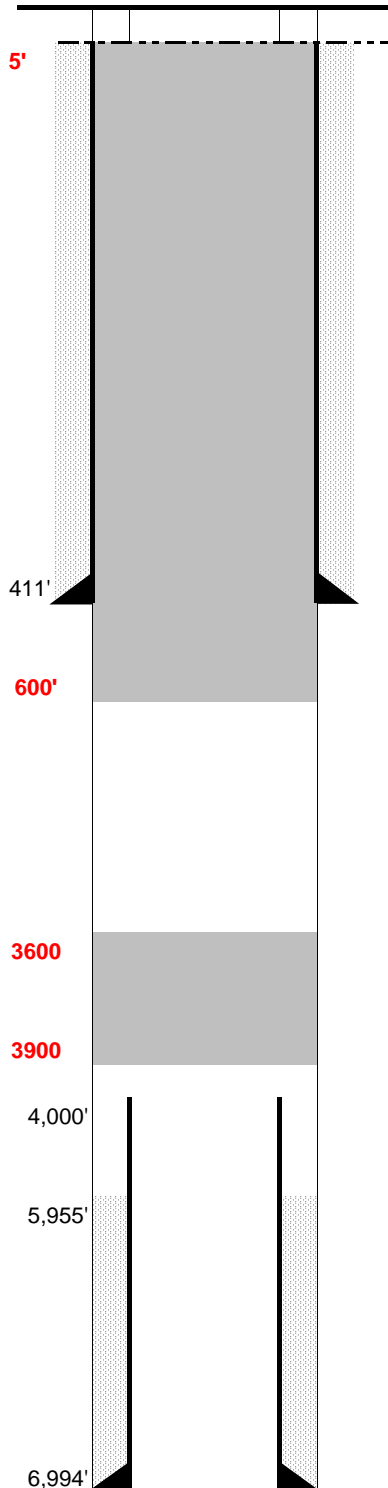


SPUD: 1/21/83
COMP: 6/19/83
ABDN: 7/26/91
COGCC: PA



SURFACE CASING

DEPTH: 411' SIZE: 8.625" GRADE: _____ WT (#/ft): 24.0
CEMENT: 280 sx
COMMENTS: _____

PRODUCTION CASING

DEPTH: 6,994' SIZE: 5.5 GRADE: _____ WT (#/ft): 15.5
CEMENT: 50 sx 50/50 Poz & 100 sx Regular TOC: 5955' (est)
COMMENTS: _____

PERFS: 6,887' - 6,898' PROD ZONE 1: J Sand

PERFS: - ZONE 2:

PERFS: - ZONE 3:

PREVIOUS PLUGS

RECOVERED:	<u>4,000'</u>	SIZE:	<u>5.5</u>	
CMT 1:	<u>400'</u>	-	<u>294'</u>	COMMENT: <u>35 sx of cement</u>
CMT 2:	<u>35'</u>	-	<u>4'</u>	COMMENT: <u>10 sx at surface</u>
CMT 3:		-		COMMENT:

PROPOSED: Plug 1: 300' cement from 3,900' - 3,600' (above casing stub)
 Plug 2: Cement from 600' to surface (FW zones)

FORMATIONS:

NIOBRARA:	6,075'
CARLILE	
BENTONITE	
D SAND	6,808'
J SAND	6,887'
SKULL CREEK	