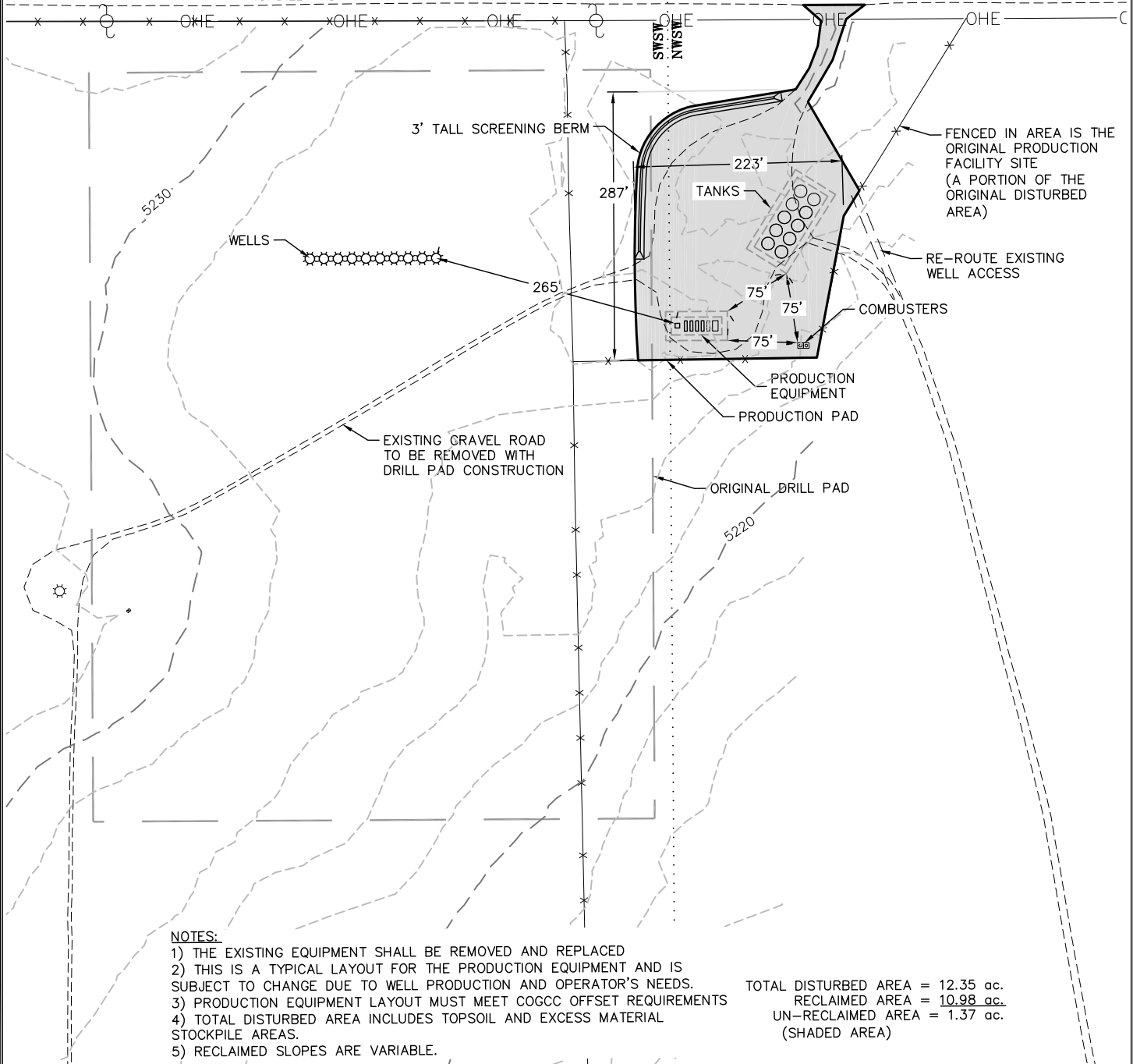




SECTION 35

SECTION 36

PICADILLY RD.



NOTES:

- 1) THE EXISTING EQUIPMENT SHALL BE REMOVED AND REPLACED
- 2) THIS IS A TYPICAL LAYOUT FOR THE PRODUCTION EQUIPMENT AND IS SUBJECT TO CHANGE DUE TO WELL PRODUCTION AND OPERATOR'S NEEDS.
- 3) PRODUCTION EQUIPMENT LAYOUT MUST MEET COGCC OFFSET REQUIREMENTS
- 4) TOTAL DISTURBED AREA INCLUDES TOPSOIL AND EXCESS MATERIAL STOCKPILE AREAS.
- 5) RECLAIMED SLOPES ARE VARIABLE.

TOTAL DISTURBED AREA = 12.35 ac.
RECLAIMED AREA = 10.98 ac.
UN-RECLAIMED AREA = 1.37 ac.
(SHADED AREA)



ECLIPSE
Surveying, Inc.

230 MAIN STREET, FORT MORGAN, CO 80701
(970) 370-2263

REV. DATE: 4/18/14
SCALE: 1" = 160'
DATE: 9/18/13
SHEET: 6 OF 8
PROJECT: 36-1S-66W S
DFT: TAB



Bill Barrett Corporation

**STATE OF COLORADO 36-1S-66W SOUTH
RECLAIMED PAD & PRODUCTION
EQUIPMENT**