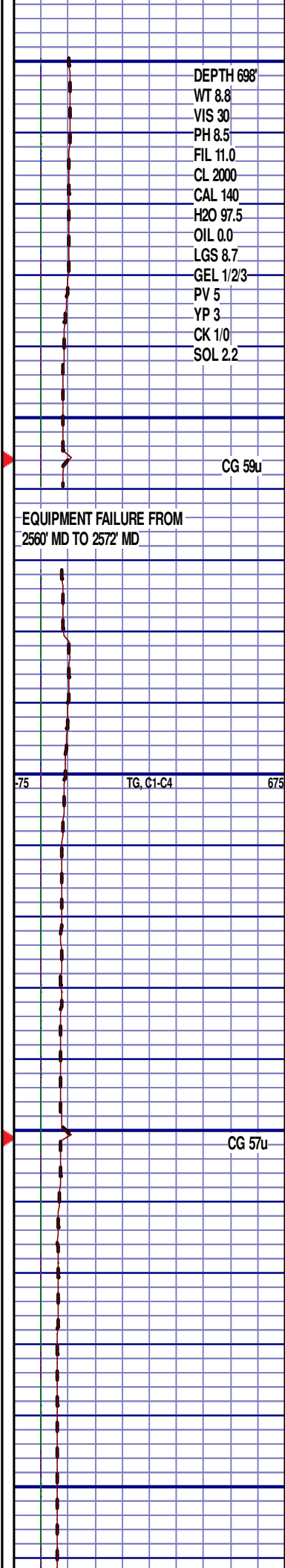


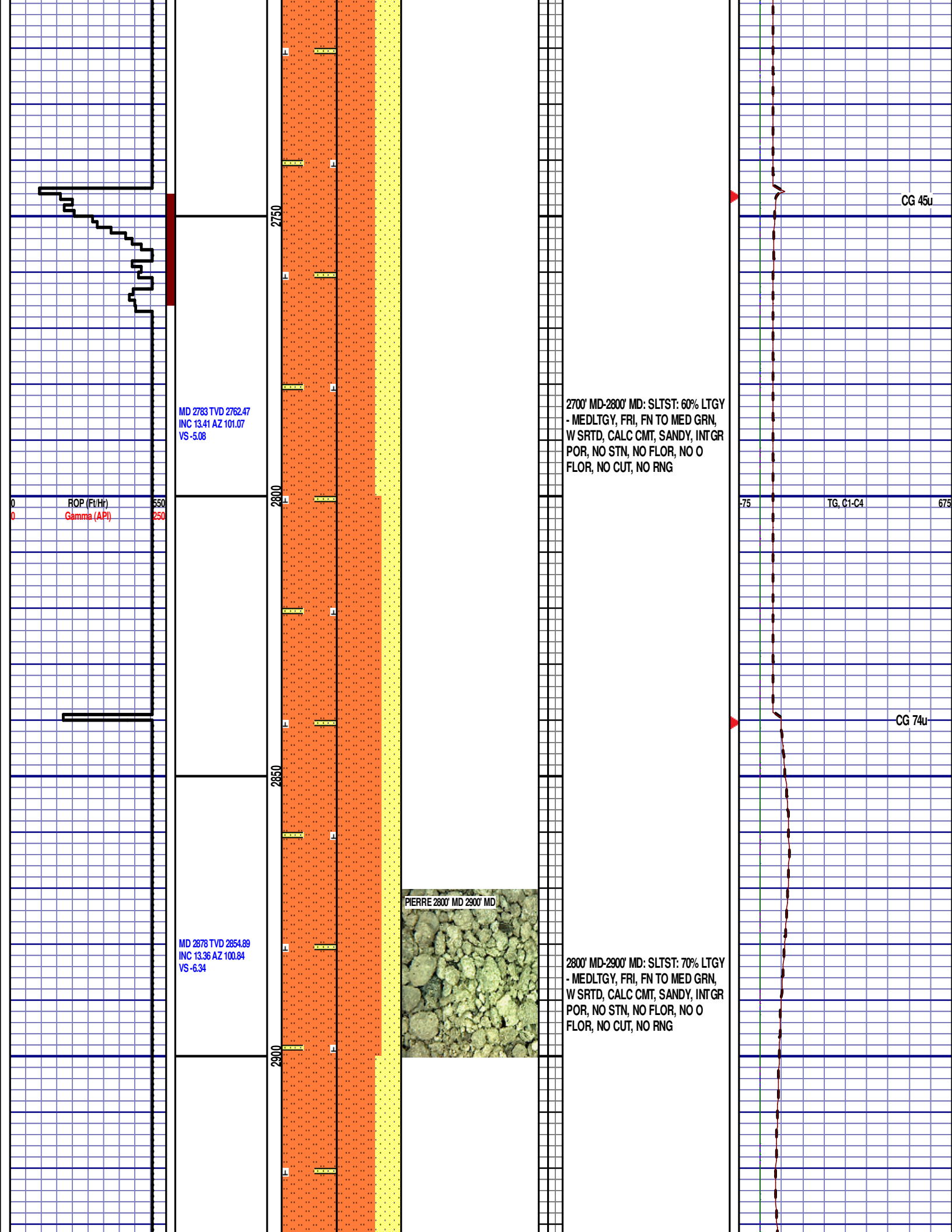
8.75", ULTERRA, U519S (S/N) 22469
IN @ 698' MD

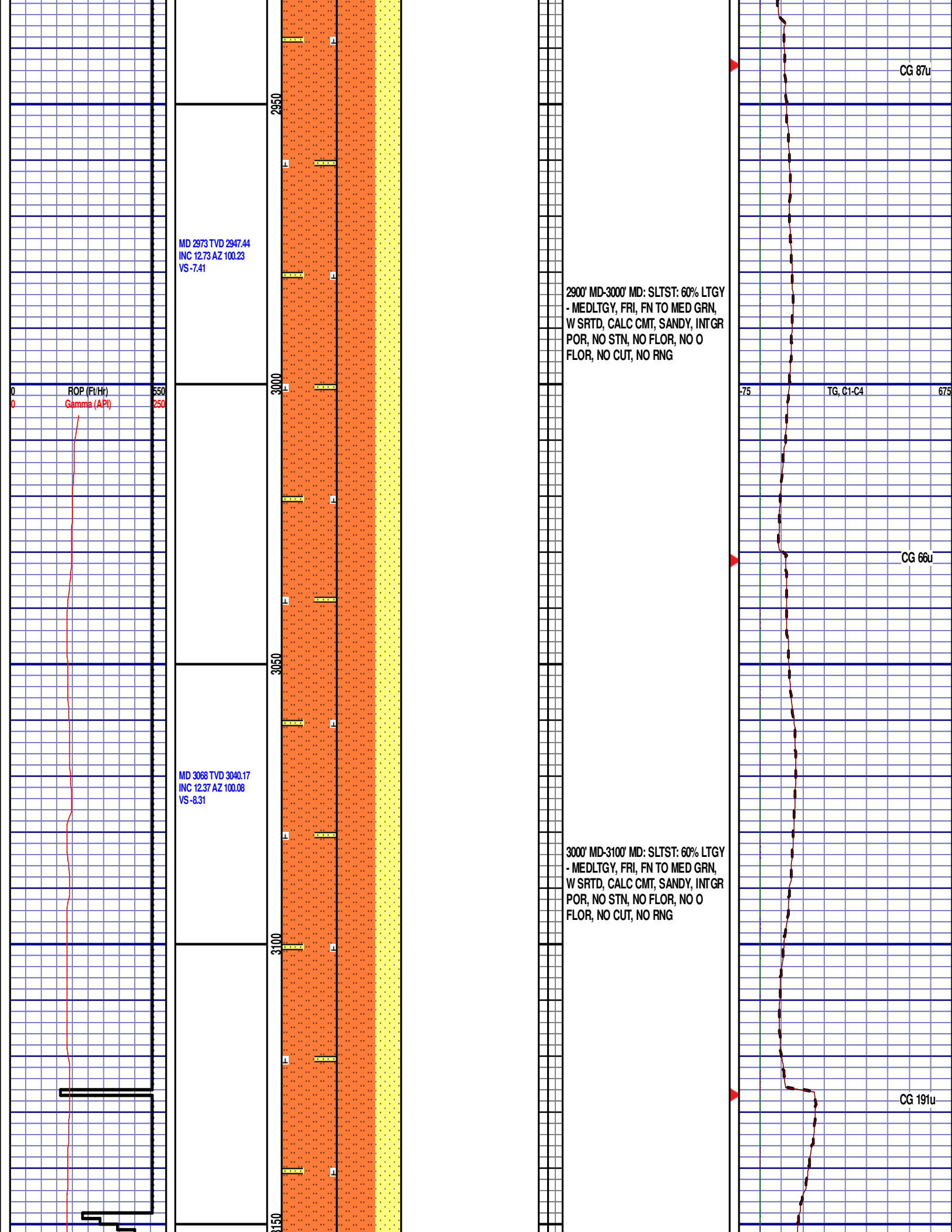
PIERRE
CAME IN BEFORE LOGGING
DEPTH

2500' MD-2600' MD: SLTST: 70% LTGY
- MEDLTGY, FRI, FN TO MED GRN,
W SRTD, CALC CMT, SANDY, INTGR
POR, NO STN, NO FLOR, NO O
FLOR, NO CUT, NO RNG

2600' MD-2700' MD: SLTST: 80% LTGY
- MEDLTGY, FRI, FN TO MED GRN,
W SRTD, CALC CMT, SANDY, INTGR
POR, NO STN, NO FLOR, NO O
FLOR, NO CUT, NO RNG







MD 3163 TVD 3133.16
INC 11.21 AZ 98.12
VS -8.81

ROP (Ft/Hr)
Gamma (API)

550
250

EQUIPMENT
FAILURE FROM
3249' MD TO
3261' MD

MD 3257 TVD 3225.34
INC 11.41 AZ 96.23
VS -8.65

MD 3352 TVD 3318.51
INC 11.1 AZ 101.15
VS -8.97

PIERRE 3100' MD - 3200' MD



3100' MD-3200' MD: SLTST: 60% LTGY
- MEDLTGY, FRI, FN TO MED GRN,
W SRTD, CALC CMT, SANDY, INTGR
POR, NO STN, NO FLOR, NO O
FLOR, NO CUT, NO RNG

3200' MD-3300' MD: SLTST: 80% LTGY
- MEDLTGY, FRI, FN TO MED GRN,
W SRTD, CALC CMT, SANDY, INTGR
POR, NO STN, NO FLOR, NO O
FLOR, NO CUT, NO RNG

75

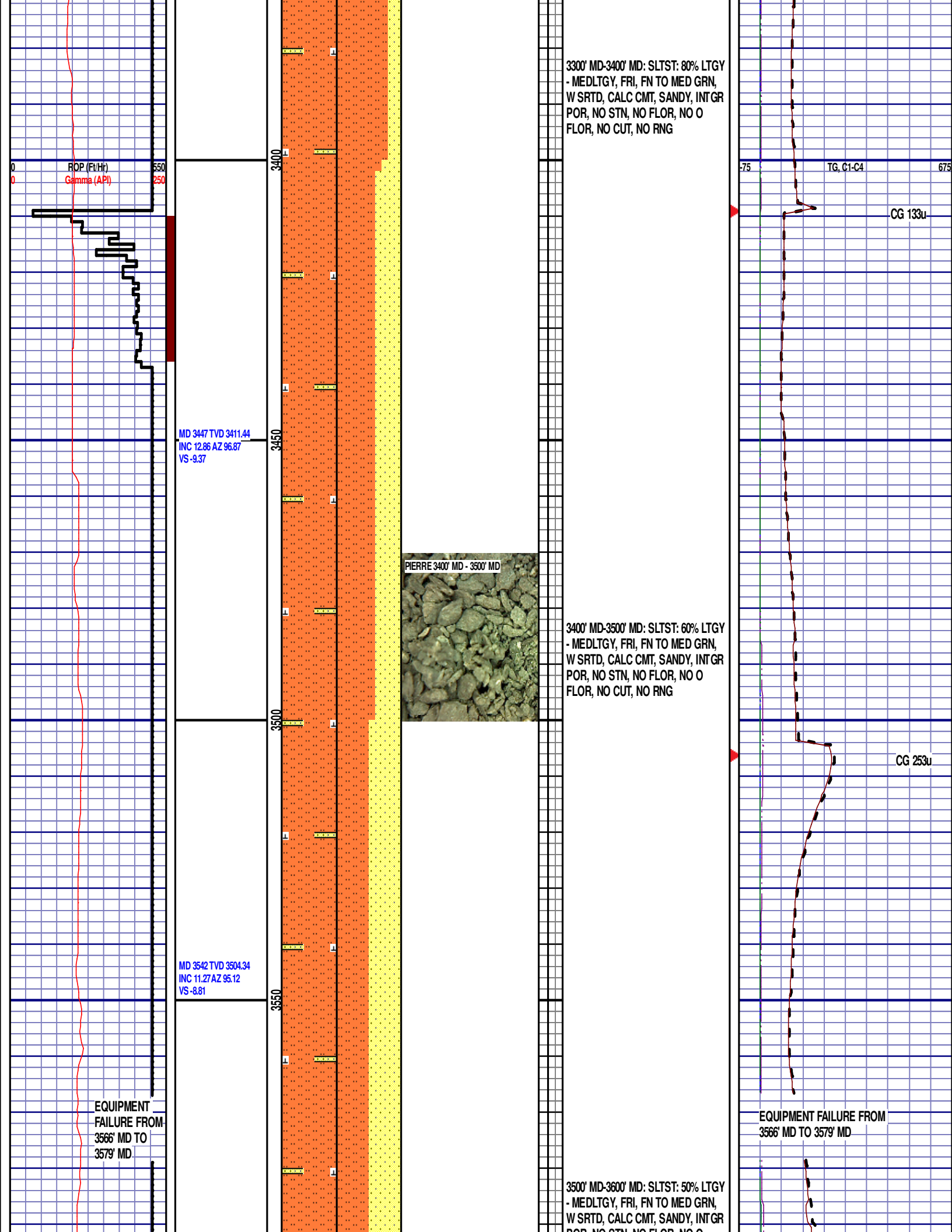
TG, C1-C4

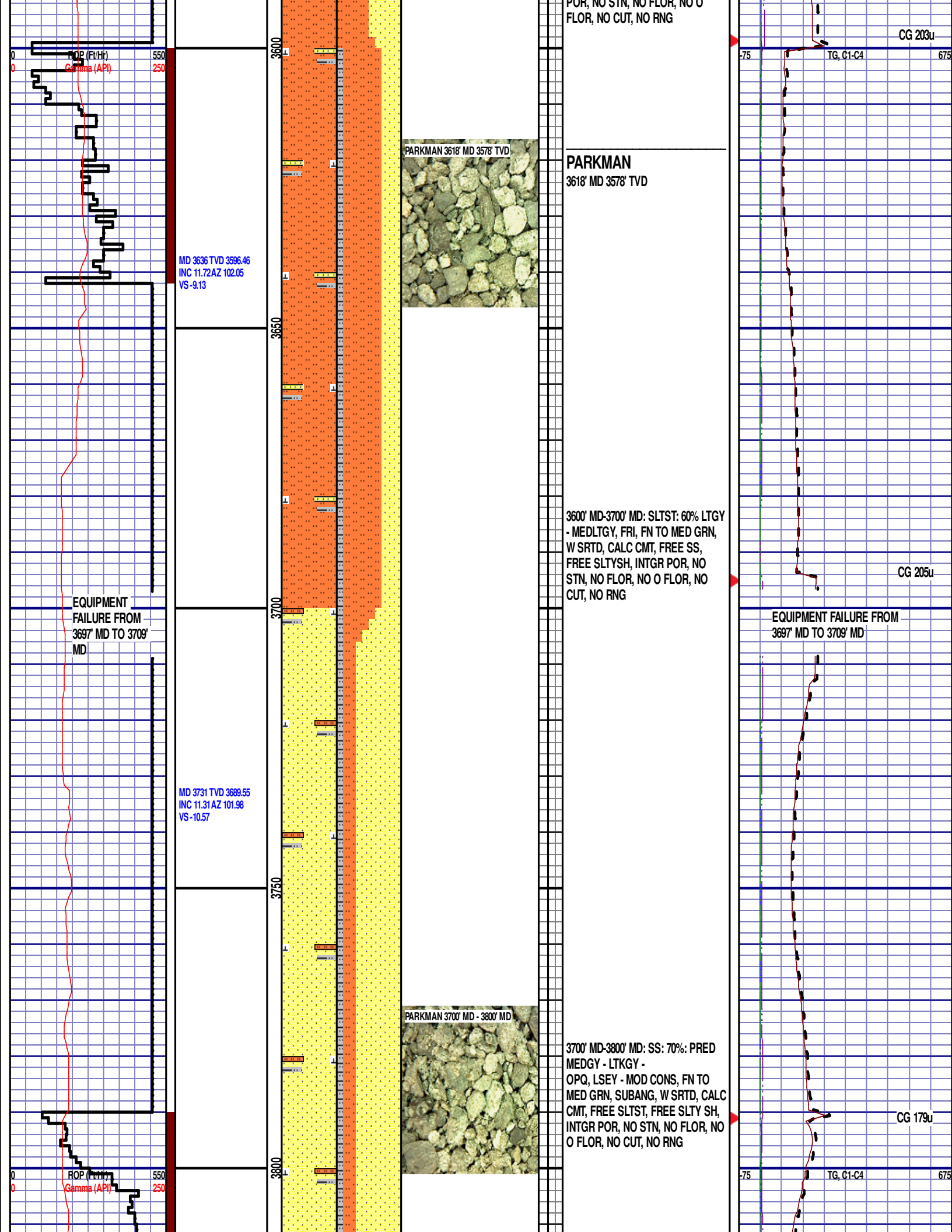
675

CG 205u

EQUIPMENT
FAILURE FROM
3249' MD TO 3261' MD

CG 226u





MD 3826 TVD 3782.28
INC 13.73 AZ 102.83
VS -12.29

3850

3900

MD 3921 TVD 3874.65
INC 13.3 AZ 104.18
VS -14.54

3950

4000

MD 4016 TVD 3967.39
INC 11.79 AZ 101.56
VS -16.44

3800' MD-3900' MD: SS: 70%: PRED
MEDGY - LTKGY -
OPQ, LSEY - MOD CONS, FN TO
MED GRN, SUBANG, W SRTD, CALC
CMT, FREE SLTST, FREE SLTY SH,
INTGR POR, NO STN, NO FLOR, NO
O FLOR, NO CUT, NO RNG

CG 97u

3900' MD-4000' MD: SS: 80%: PRED
MEDGY, OPQ, LSEY - MOD CONS,
FN TO MED GRN, SUBANG, W
SRTD, CALC CMT, FREE SLTST,
INTGR POR, NO STN, NO FLOR, NO
O FLOR, NO CUT, NO RNG

CG 148u

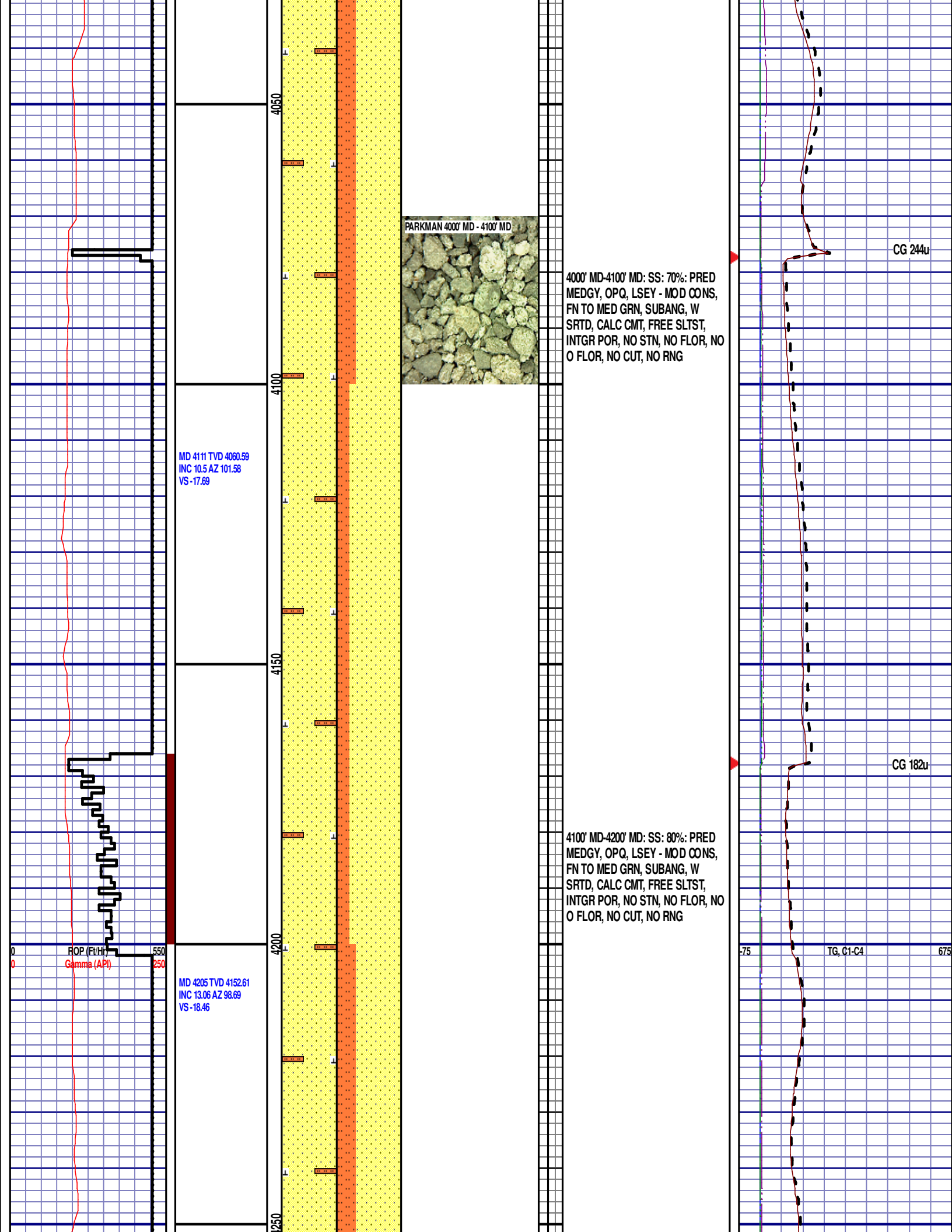
75

TG, C1-C4

675

ROP (Ft/Hr)
Gamma (API)

550
250



EQUIPMENT
FAILURE FROM
4281' MD TO 4293'
MD

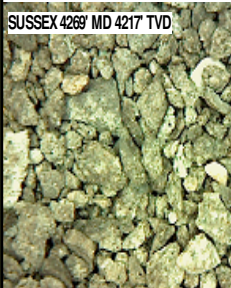
EQUIPMENT
FAILURE FROM
4318' MD TO 4353'
MD

ROP (Ft/Hr)
Gamma (API)

MD 4301 TVD 4246.34
INC 11.88 AZ 95.77
VS -18.33

MD 4396 TVD 4339.44
INC 11.09 AZ 96.12
VS -17.76

SUSSEX 4269' MD 4217' TVD



SUSSEX

4269' MD 4217' TVD

4200' MD-4300' MD: SS: 70%: PRED
MEDGY, OPQ, LSEY - MOD CONS,
FN TO MED GRN, SUBANG, W
SRTD, CALC CMT, FREE SLTST,
INTGR POR, NO STN, NO FLOR, NO
O FLOR, NO CUT, NO RNG

4300' MD-4400' MD: SS: 70%: PRED
MEDGY, OPQ, LSEY - MOD CONS,
FN TO MED GRN, SUBANG, W
SRTD, CALC CMT, FREE SLTST,
INTGR POR, NO STN, NO FLOR, NO
O FLOR, WEAK LZY CUT, LT
BLSHWT RNG

CG 207u
DEPTH 4260'
WT 8.80
VIS 33
PH 9.2
FIL 12.0
CL 2400
CAL 100
EQUIPMENT FAILURE FROM 4281' MD TO 4293' MD
OIL 0.0
LGS 14.2
GEL 3/13/16
PV 7
YP 4
CK 1/0
SOL 2.5

EQUIPMENT FAILURE FROM
4318' MD TO 4353' MD

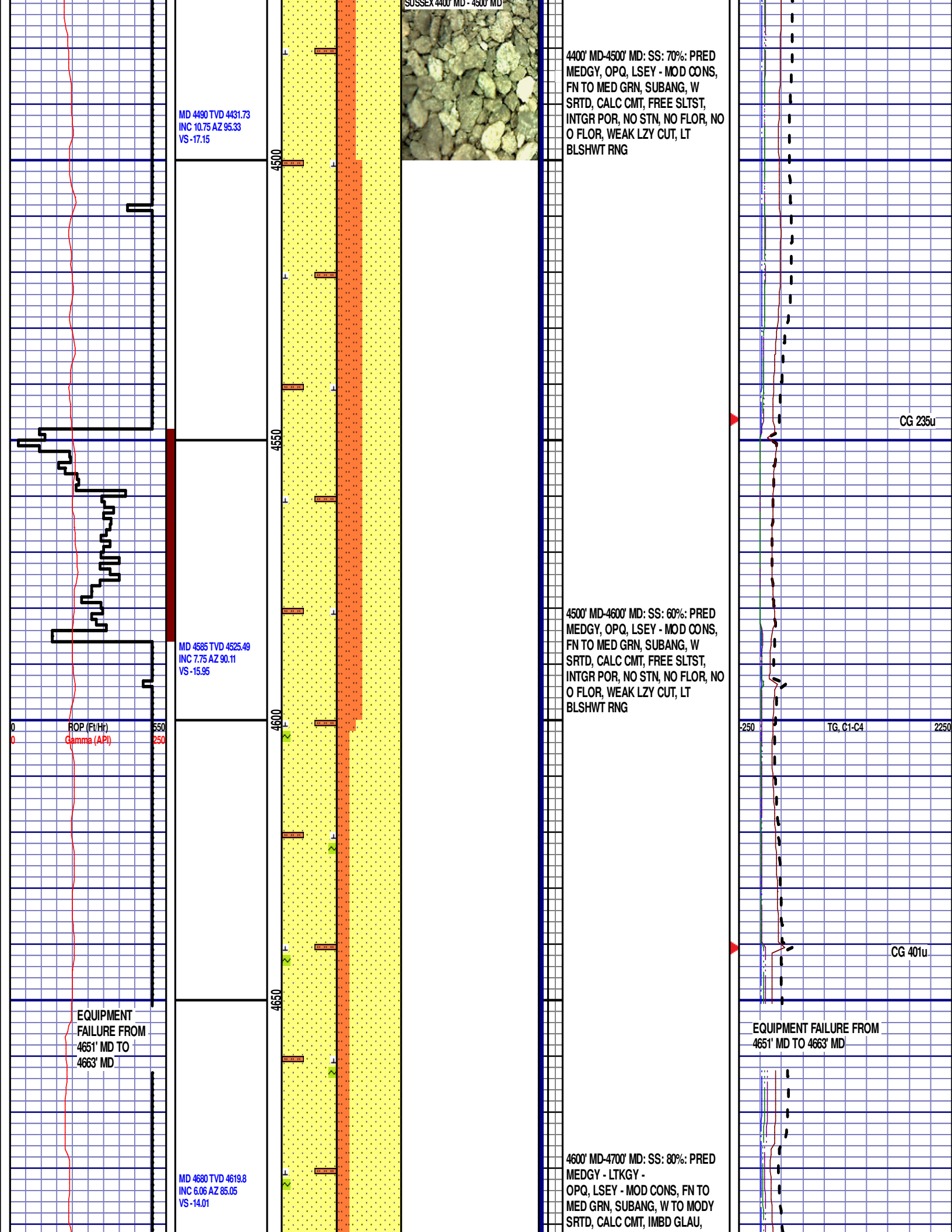
CG 202u

SCALE: -250 TO 2250
(250 UNITS/DIVISION)

Scale Change
TG, C1-C4

TG, C1-C4

CG 1829u



FREE SLTST, INTGR POR, NO STN,
NO FLOR, NO O FLOR, WEAK LZ
CUT, LT BLSHWT RNG

CG 364u

MD 4774 TVD 4713.35
INC 5.17 AZ 77.21
VS -11.45

SUSSEX 4700' MD - 4800' MD



4700' MD-4800' MD: SS: 80%: PRED
MEDGY - LTKGY -
OPQ, LSEY - MOD CONS, FN TO
MED GRN, SUBANG, W TO MODY
SRTD, CALC CMT, IMBD GLAU,
FREE SLTST, INTGR POR, NO STN,
NO FLOR, NO O FLOR, WEAK LZ
CUT, LT BLSHWT RNG

ROP (Ft/Hr)
Gamma (API)

550
250

TG, C1-C4

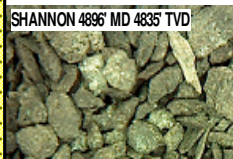
2250

CG 363u

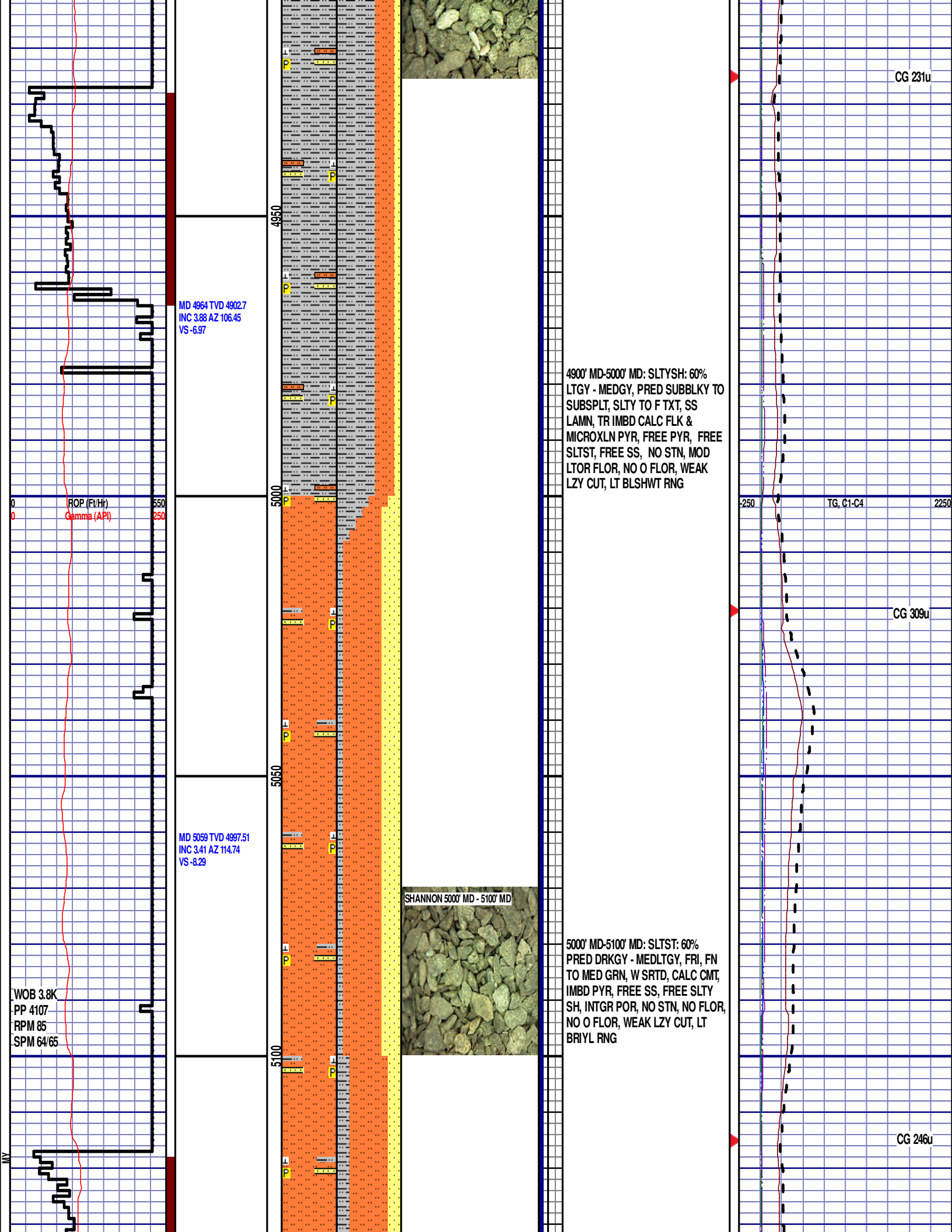
MD 4869 TVD 4807.97
INC 5.02 AZ 72.99
VS -8.21

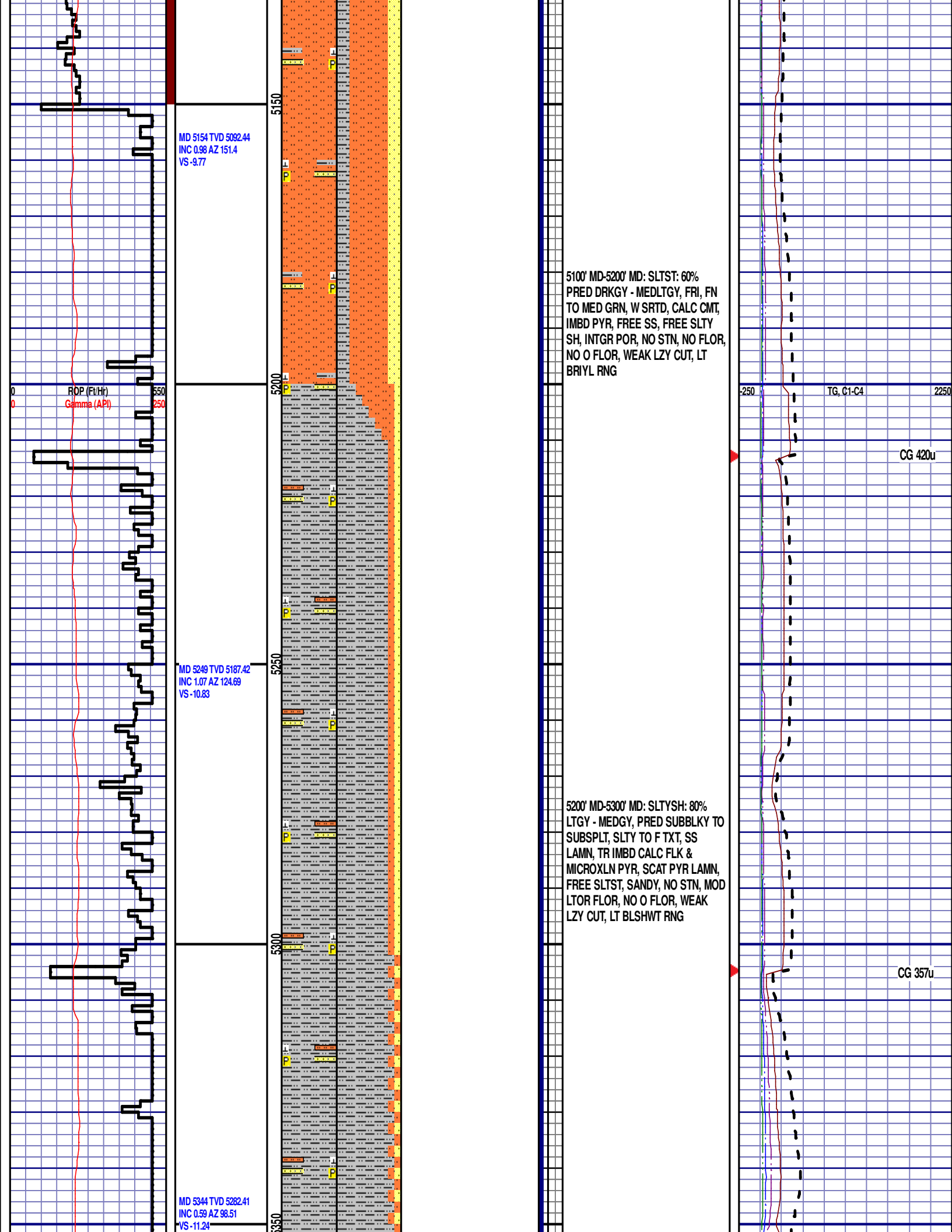
4800' MD-4900' MD: SLTYSH: 50%
LTGY - MEDGY, PRED SUBBLKY TO
SUBSPLT, SLTY TO F TXT, SS
LAMN, TR IMBD CALC FLK &
MICROXLN PYR, FREE PYR, FREE
SLTST, FREE SS, NO STN, MOD
LTOR FLOR, NO O FLOR, WEAK
LZY CUT. LT BLSHWT RNG

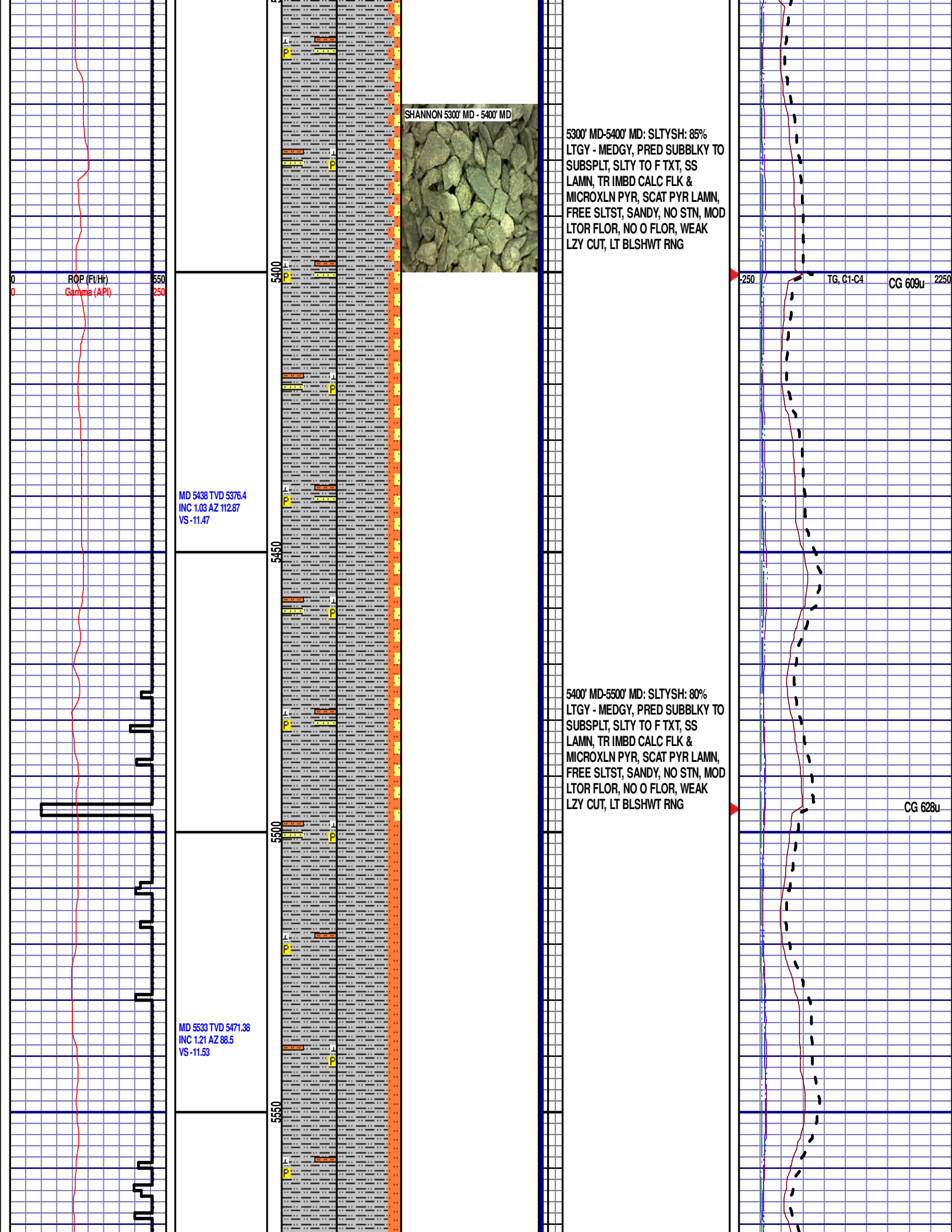
SHANNON 4896' MD 4835' TVD

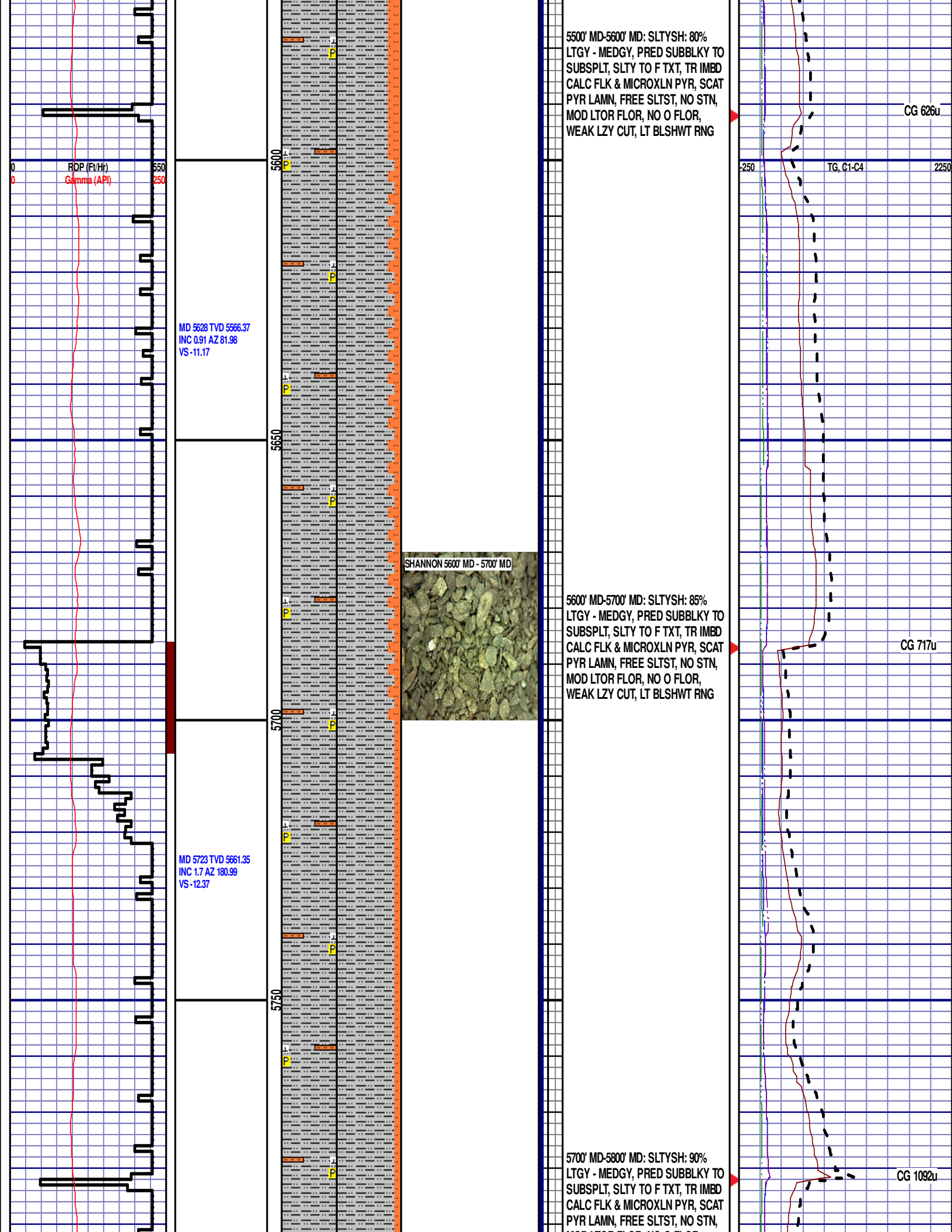


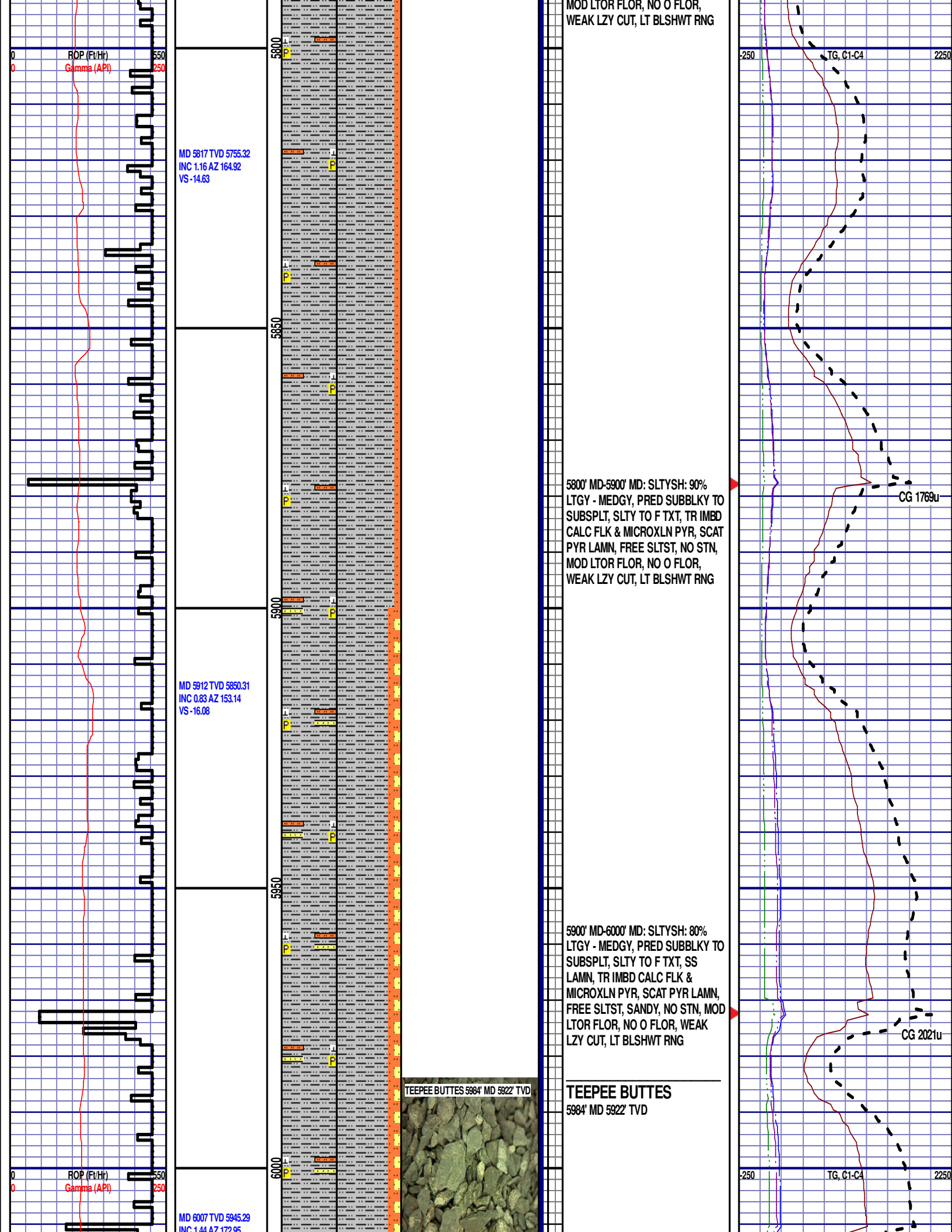
SHANNON
4896' MD 4835' TVD











VS -17.8

WOB 18.5K
PP 3574
RPM 40
SPM 63/63
12:01AM
1/20/14
DAY 03
FT/24HRS
3563

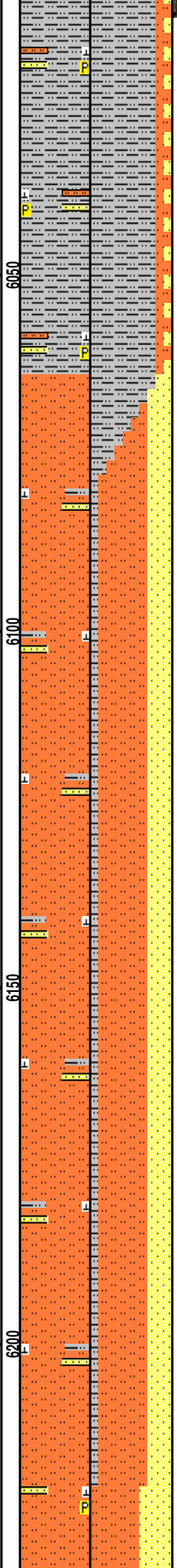
WOB 23.7K
PP 3517
RPM 0
SPM 63/63

MD 6100 TVD 6038.26
INC 1.25 AZ 179.86
VS -19.93

MD 6148 TVD 6086.25
INC 2.79 AZ 345.26
VS -19.37

MD 6195 TVD 6133.02
INC 8.24 AZ 353.06
VS -15.05

ROP (Ft/Hr)
Gamma (API)



TOOH @ 9:05 PM ON 1/19/2014 @
6063' MD FOR CURVE ASSEMBLY.
TIH @ 1:00 AM ON 1/20/2014.
RESUMED DRILLING @ 4:40 AM ON
1/20/2014 W/ BIT #3, 8.75", HDBS
MMD55M, S/N 12262948 IN @ 6063'
MD.

6063' MD-6100' MD: SLTST: 60%
PRED DRKGY - MEDLTGY, FRI, FN
TO MED GRN, W SRTD, CALC CMT,
SANDY, FREE SLTY SH, INTGR
POR, NO STN, NO FLOR, NO O
FLOR, MOD LZY CUT, LT BRIYL RNG

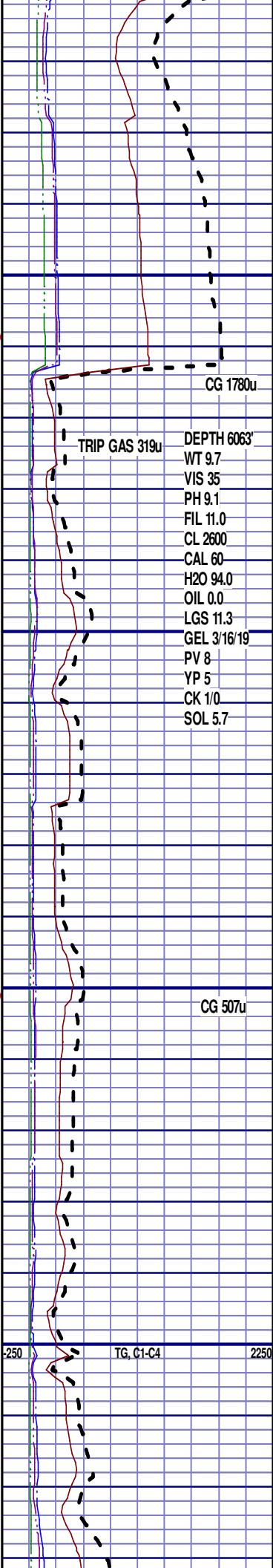
6100' MD-6130' MD: SLTST: 60%
PRED DRKGY - MEDLTGY, FRI, FN
TO MED GRN, W SRTD, CALC CMT,
SANDY, FREE SLTY SH, INTGR
POR, NO STN, NO FLOR, NO O
FLOR, MOD LZY CUT, LT BRIYL RNG

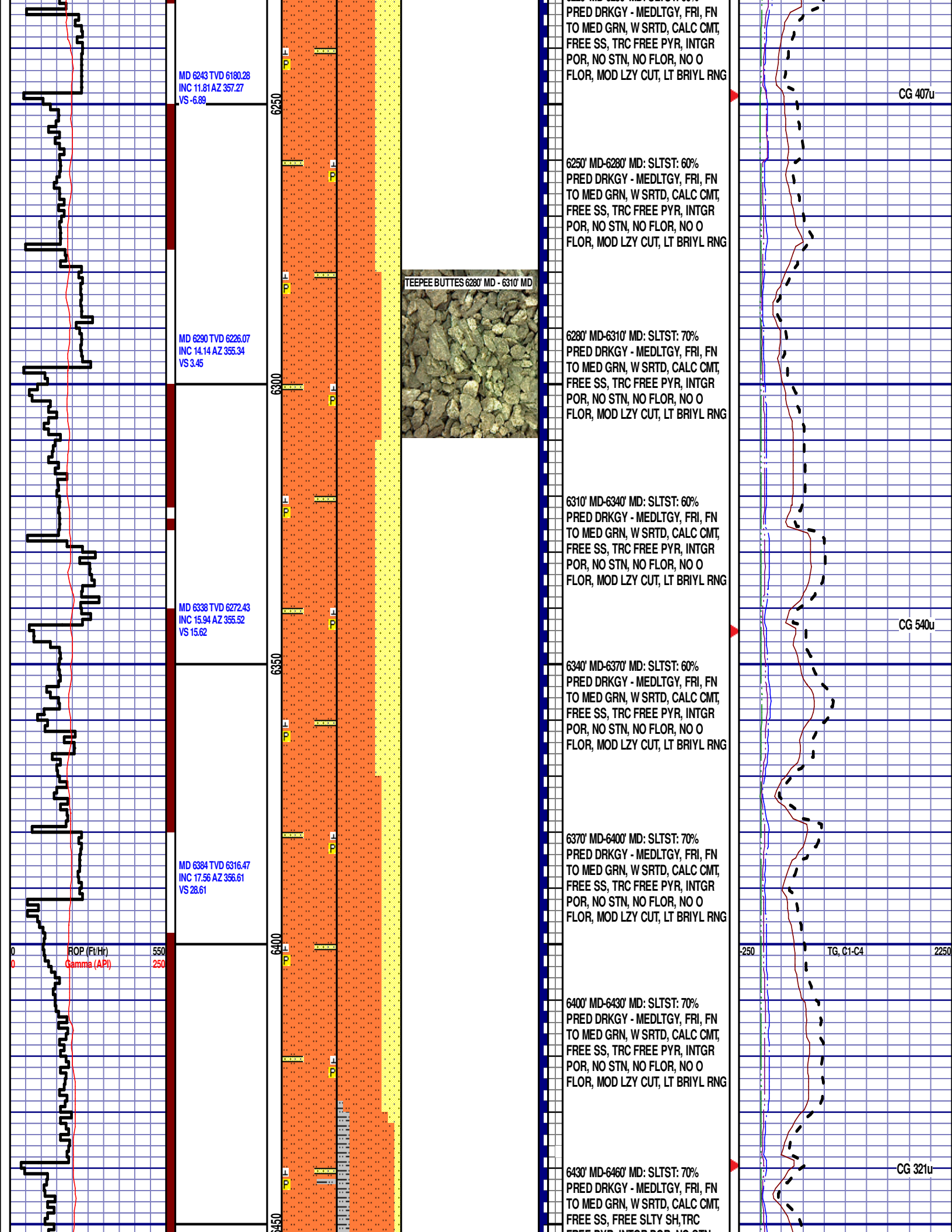
6130' MD-6160' MD: SLTST: 60%
PRED DRKGY - MEDLTGY, FRI, FN
TO MED GRN, W SRTD, CALC CMT,
SANDY, FREE SLTY SH, INTGR
POR, NO STN, NO FLOR, NO O
FLOR, MOD LZY CUT, LT BRIYL RNG

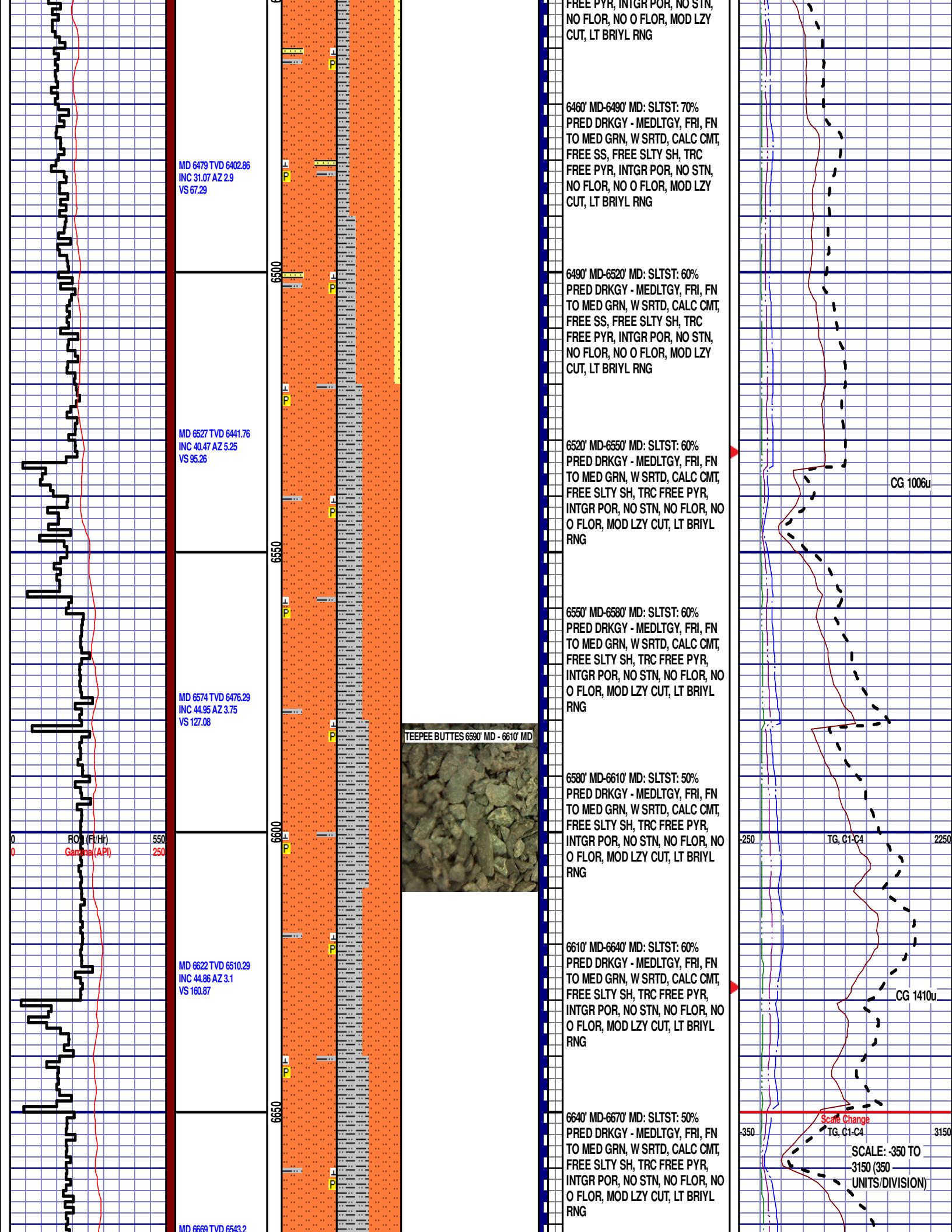
6160' MD-6190' MD: SLTST: 60%
PRED DRKGY - MEDLTGY, FRI, FN
TO MED GRN, W SRTD, CALC CMT,
SANDY, FREE SLTY SH, INTGR
POR, NO STN, NO FLOR, NO O
FLOR, MOD LZY CUT, LT BRIYL RNG

6190' MD-6220' MD: SLTST: 60%
PRED DRKGY - MEDLTGY, FRI, FN
TO MED GRN, W SRTD, CALC CMT,
SANDY, FREE SLTY SH, INTGR
POR, NO STN, NO FLOR, NO O
FLOR, MOD LZY CUT, LT BRIYL RNG

6220' MD-6250' MD: SLTST: 60%







INC 46.28 AZ 359.9
VS 194.23

MD 6717 TVD 6575.57
INC 48.93 AZ 355.07
VS 229.09

MD 6763 TVD 6604.44
INC 53.3 AZ 353.67
VS 263.92

MD 6811 TVD 6631.02
INC 59.41 AZ 354.9
VS 302.78

6700

6750

6800

6850

SHARON SPRINGS 6764' MD 6605'
TVD



6670' MD-6700' MD: SLTST: 50%
PRED DRKG - MEDLTGY, FRI, FN
TO MED GRN, W SRTD, CALC CMT,
FREE SLTY SH, TRC FREE PYR,
INTGR POR, NO STN, NO FLOR, NO
O FLOR, MOD LZY CUT, LT BRIYL
RNG

6700' MD-6730' MD: SLTY SH: 60%
MEDDRKGY -MEDLTGY, BLKY TO
SUBBLKY, GRTY TO SLTY TXT, FRM
TO BRIT, SLTST LAMN, FREE CAL,
FREE PYR, FREE BENT, NO STN,
30% MIN FLOR, NO O FLOR, FAST
STRMG CUT, MOD BLSHWT RNG

6730' MD-6760' MD: SLTY SH: 60%
MEDDRKGY -MEDLTGY, BLKY TO
SUBBLKY, GRTY TO SLTY TXT, FRM
TO BRIT, SLTST LAMN, FREE CAL,
FREE PYR, FREE BENT, NO STN,
30% MIN FLOR, NO O FLOR, FAST
STRMG CUT, MOD BLSHWT RNG

SHARON SPRINGS

6764' MD 6605' TVD

6760' MD-6790' MD: SLTY SH: 70%
MEDDRKGY -MEDLTGY, BLKY TO
SUBBLKY, GRTY TO SLTY TXT, FRM
TO BRIT, SLTST LAMN, FREE CAL,
FREE PYR, NO STN, 5%
MIN FLOR, NO O FLOR, FAST STRMG
CUT, MOD BLSHWT RNG

6790' MD-6820' MD: SLTY SH: 60%
MEDDRKGY -MEDLTGY, BLKY TO
SUBBLKY, GRTY TO SLTY TXT, FRM
TO BRIT, SLTST LAMN, FREE CAL,
FREE PYR, FREE BENT, NO STN,
30% MIN FLOR, NO O FLOR, FAST
STRMG CUT, MOD BLSHWT RNG

6820' MD-6850' MD: SLTY SH: 60%
MEDDRKGY -MEDLTGY, BLKY TO
SUBBLKY, GRTY TO SLTY TXT, FRM
TO BRIT, SLTST LAMN, FREE CAL,
FREE PYR, FREE BENT, NO STN,
30% MIN FLOR, NO O FLOR, FAST
STRMG CUT, MOD BLSHWT RNG

END OF VERTICAL LOG @ 6850' MD
ON 1/20/2014, CONTINUED ON
HORIZONTAL LOG

CG 2223u

TG, C1-C4

CG 2352u

		00					
--	--	----	--	--	--	--	--