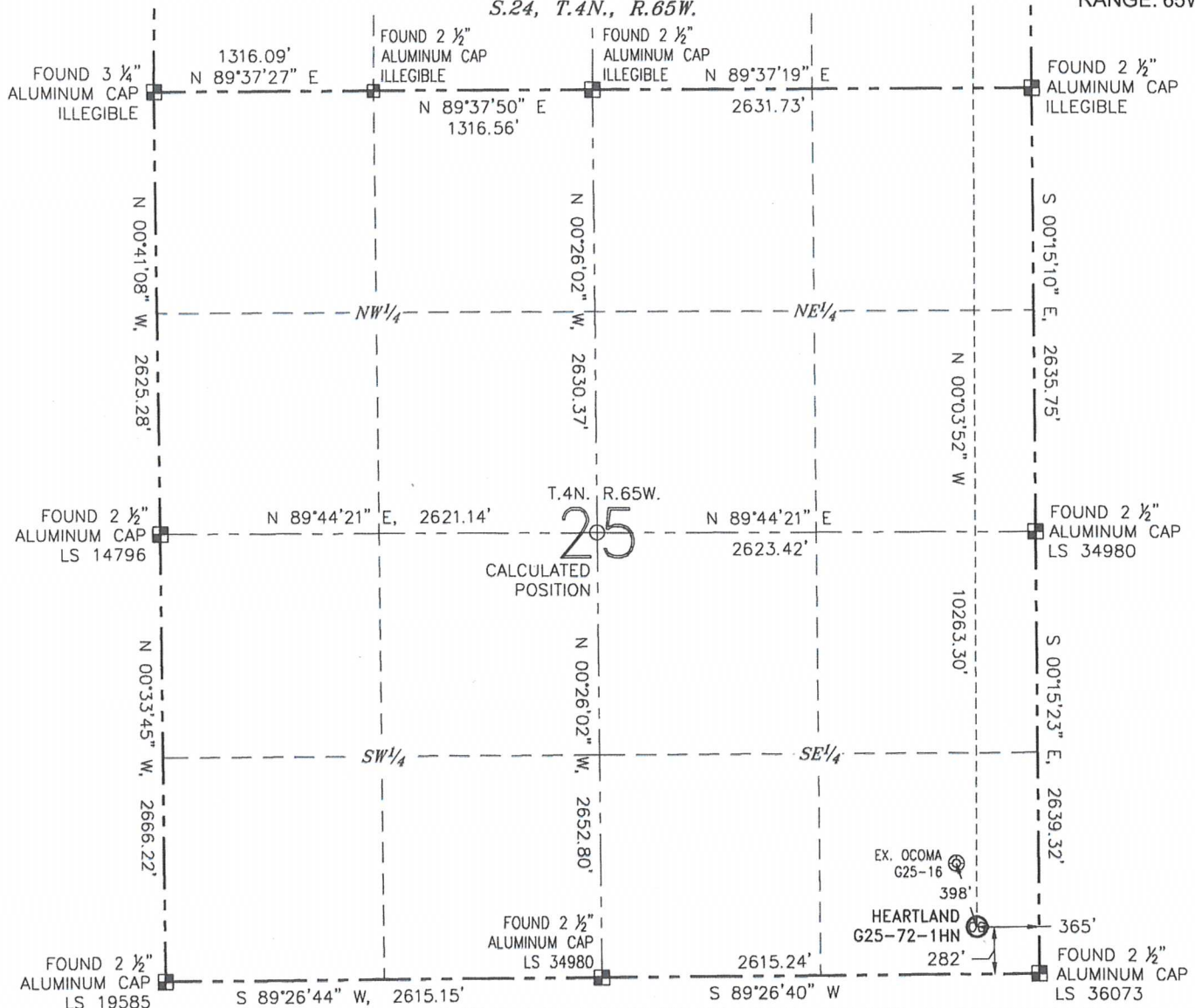


WELL LOCATION CERTIFICATE

HEARTLAND G25-72-1HN
(SHEET 1 OF 2)SECTION: 25
TOWNSHIP: 4N
RANGE: 65W

S.24, T.4N., R.65W.



NOTES:

1. BEARINGS ARE GRID BEARINGS OF THE COLORADO STATE PLANE COORDINATE SYSTEM, NORTH ZONE, NAD 83. THE LINEAL DIMENSIONS SHOWN HEREON ARE BASED UPON THE "U.S. SURVEY FOOT".
2. GROUND ELEVATIONS ARE BASED UPON NGS OPUS SOLUTION NAVD 88 DATUM COMPUTED USING GEOID09.
3. IMPROVEMENTS: SEE LOCATION DRAWING FOR ALL VISIBLE IMPROVEMENTS WITHIN 500' OF THE DISTURBED AREA.
4. SURFACE USE: RANGELAND.
5. INSTRUMENT OPERATOR: ANTONIO SMITH.
6. THE NEAREST EXISTING WELL: OCOMA G25-16, 398' NW.

IN ACCORDANCE WITH A REQUEST FROM MATT VERBIT WITH NOBLE ENERGY INC., R&R ENGINEERS-SURVEYORS, INC. HAS DETERMINED THE SURFACE HOLE LOCATION OF THE HEARTLAND G25-72-1HN WELL TO BE 282' FROM THE SOUTH LINE AND 365' FROM THE EAST LINE AS MEASURED AT RIGHT ANGLES FROM THE SECTION LINES OF SECTION 25, TOWNSHIP 4 NORTH, RANGE 65 WEST, AND THE BOTTOM HOLE LOCATION TO BE 75' FROM THE NORTH LINE AND 330' FROM THE EAST LINE AS MEASURED AT RIGHT ANGLES FROM THE SECTION LINES OF SECTION 24, TOWNSHIP 4 NORTH, RANGE 65 WEST OF THE 6TH PRINCIPAL MERIDIAN, WELD COUNTY, COLORADO.

I HEREBY CERTIFY THAT THIS WELL LOCATION CERTIFICATE WAS PREPARED BY ME, OR UNDER MY DIRECT SUPERVISION, THAT THE FIELD WORK WAS COMPLETED ON 09/30/2013, FOR AND ON BEHALF OF NOBLE ENERGY INC., THAT IT IS NOT A LAND SURVEY PLAT OR AN IMPROVEMENT SURVEY PLAT, AND THAT IT IS NOT TO BE RELIED UPON FOR ESTABLISHMENT OF FENCES, BUILDINGS, OR OTHER FUTURE IMPROVEMENT LINES.

NEAREST CULTURAL ITEMS:

BUILDING:	1381' E
BUILDING UNIT:	1278' E
HIGH OCCUPANCY BUILDING UNIT:	5280'+
DESIGNATED OUTSIDE ACTIVITY AREA:	5280'+
PUBLIC ROAD (CR 49):	344' E
ABOVEGROUND UTILITY:	252' S
RAILROAD:	5280'+
PROPERTY LINE:	282' S



0 1000'
SCALE: 1" = 1000'

LEGEND

- ⊗ PROPOSED WELL ⊙ BOTTOM HOLE ○ CALCULATED POSITION
 ⊕ EXISTING WELL ■ FOUND MONUMENT

SURFACE HOLE LOCATION

LATITUDE: N 40.27673'
 LONGITUDE: W 104.60365'
 PDOP: 1.5
 ELEVATION: 4842'
 1/4-1/4: SE 1/4 SE 1/4

BOTTOM HOLE LOCATION

LATITUDE: N 40.30490'
 LONGITUDE: W 104.60332'



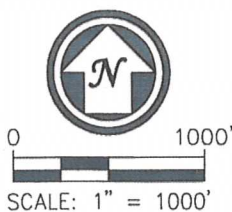
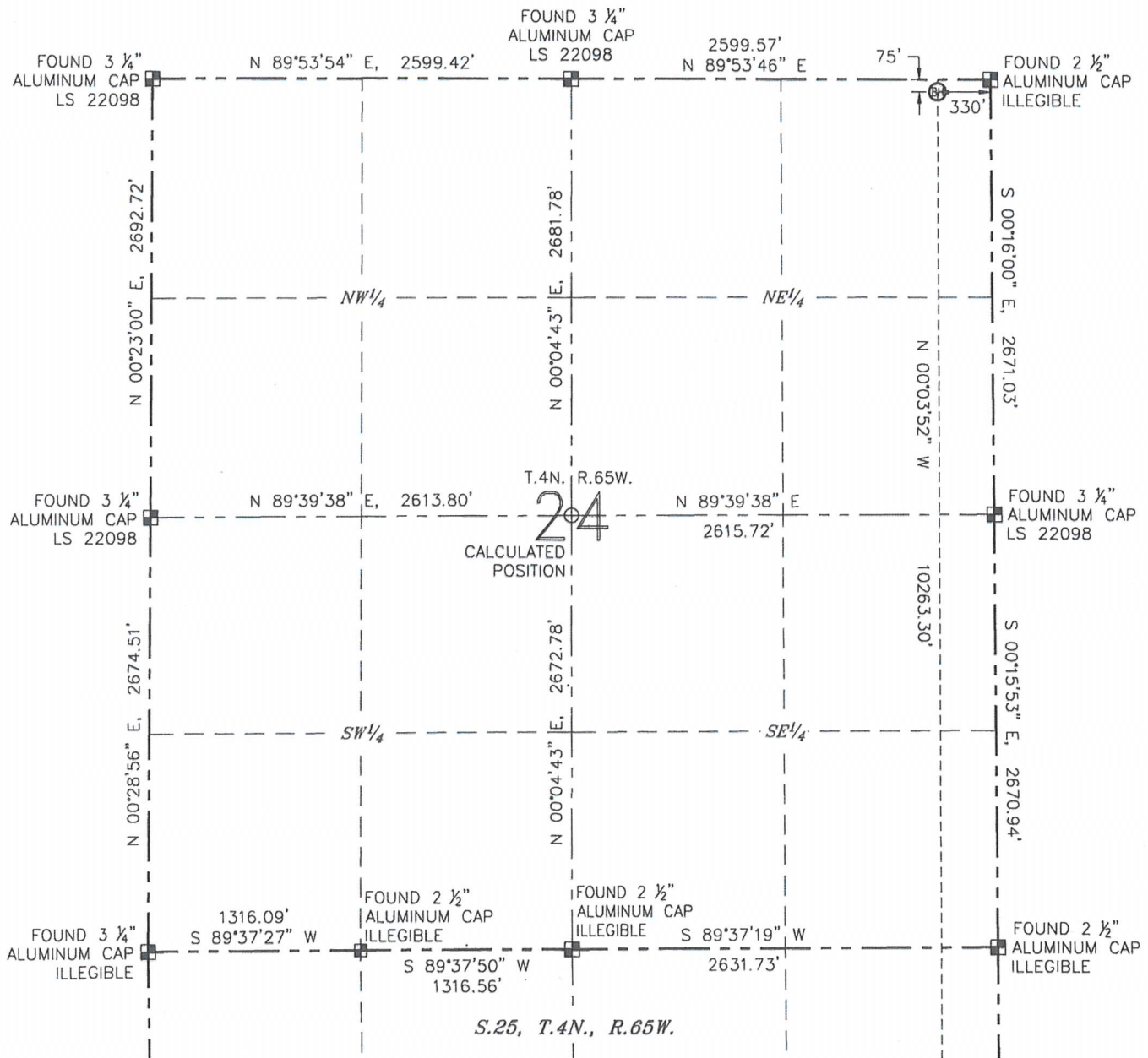
ANTONIO W. SMITH, PLS 38320

FOR AND ON BEHALF OF R&R ENGINEERS-SURVEYORS, INC. DATE: 01/10/2014
JOB NO.: NE13301

WELL LOCATION CERTIFICATE

HEARTLAND G25-72-1HN
(SHEET 2 OF 2)

SECTION: 25
TOWNSHIP: 4N
RANGE: 65W



LEGEND

- ⊗ PROPOSED WELL
- ⊙ EXISTING WELL
- ⊠ FOUND MONUMENT
- CALCULATED POSITION



ANTONIO W. SMITH, PLS 38320
FOR AND ON BEHALF OF R&R ENGINEERS-SURVEYORS, INC. DATE: 01/10/2014
JOB NO.: NE13301

SITE SKETCH

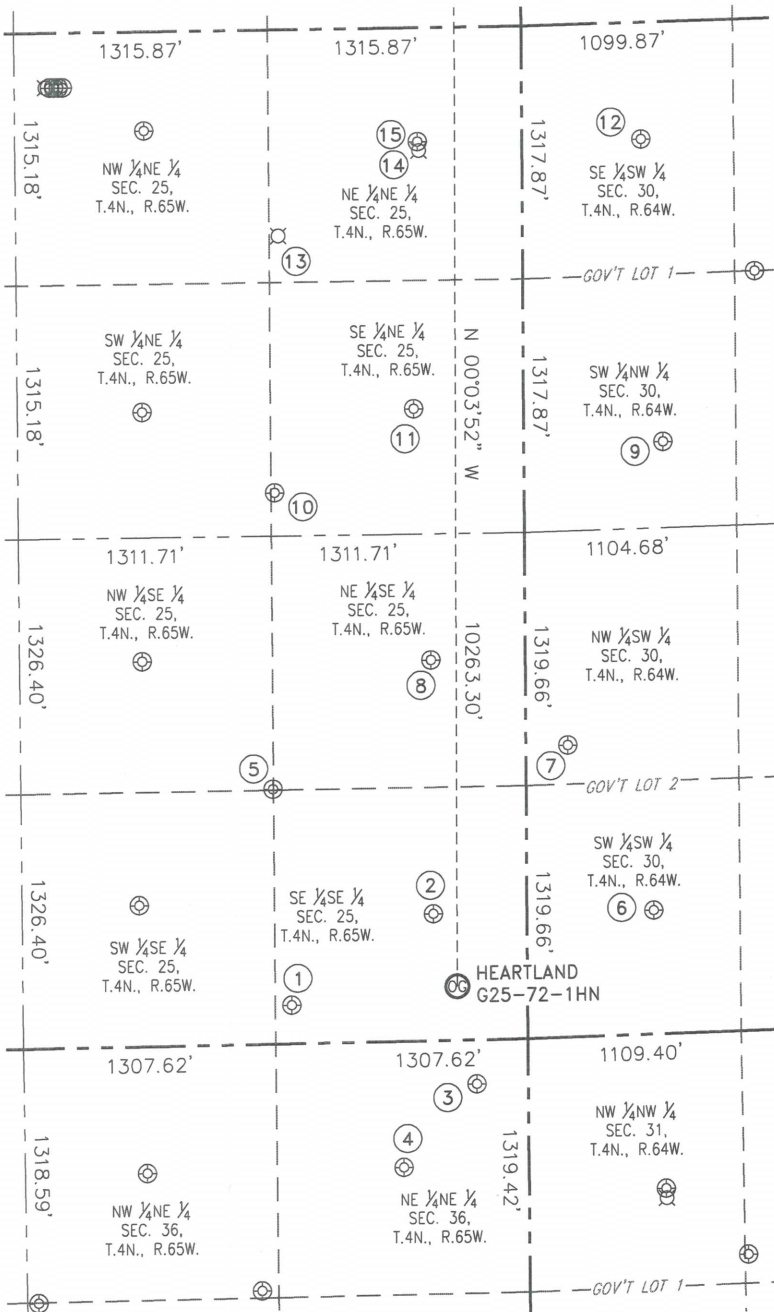
HEARTLAND G25-72-1HN

(SHEET 1 OF 2)

SECTION: 25

TOWNSHIP: 4N

RANGE: 65W



- (1)
SHELTON G36-27
SE $\frac{1}{4}$ SE $\frac{1}{4}$
201' FSL 1223' FEL
LAT: N 40.27651"
LONG: W 104.60672"
PDOP: 1.3
ELEV: 4830'

(2)
OCOMA G25-16
SE $\frac{1}{4}$ SE $\frac{1}{4}$
662' FSL 486' FEL
LAT: N 40.27777"
LONG: W 104.60407"
PDOP: 1.4
ELEV: 4843'

(3)
PEDRO STATE C31-79HN
NE $\frac{1}{4}$ NE $\frac{1}{4}$
229' FNL 268' FEL
LAT: N 40.27533"
LONG: W 104.60331"
PDOP: 1.8
ELEV: 4846'

(4)
GERRY STATE G36-1
NE $\frac{1}{4}$ NE $\frac{1}{4}$
657' FNL 650' FEL
LAT: N 40.27416"
LONG: W 104.60468"
PDOP: 1.9
ELEV: 4844'

(5)
OCOMA G25-23
NW $\frac{1}{4}$ SE $\frac{1}{4}$
1328' FSL 1313' FEL
LAT: N 40.27960"
LONG: W 104.60702"
PDOP: 1.5
ELEV: 4822'

(6)
JOHNSON A-30
SW $\frac{1}{4}$ SW $\frac{1}{4}$
646' FSL 658' FEL
LAT: N 40.27776"
LONG: W 104.59997"
PDOP: 1.5
ELEV: 4864'

(7)
BROSNAHAN 13-30
NW $\frac{1}{4}$ SW $\frac{1}{4}$
1523' FSL 218' FWL
LAT: N 40.28015"
LONG: W 104.60153"
PDOP: 1.6
ELEV: 4843'

(8)
OCOMA G25-09
NE $\frac{1}{4}$ SE $\frac{1}{4}$
1982' FSL 490' FEL
LAT: N 40.28140"
LONG: W 104.60406"
PDOP: 1.6
ELEV: 4840'

(9)
STEWART 30-23
SW $\frac{1}{4}$ SW $\frac{1}{4}$
2187' FNL 723' FWL
LAT: N 40.28446"
LONG: W 104.59969"
PDOP: 4.5
ELEV: 4865'

(10)
SHELTON G25-22
SE $\frac{1}{4}$ NE $\frac{1}{4}$
2406' FNL 1295' FEL
LAT: N 40.28385"
LONG: W 104.60693"
PDOP: 1.5
ELEV: 4825'

(11)
PLUSS G25-8
SE $\frac{1}{4}$ NE $\frac{1}{4}$
1984' FNL 571' FEL
LAT: N 40.28500"
LONG: W 104.60432"
PDOP: 1.3
ELEV: 4825'

(12)
STEWART 30-1
NW $\frac{1}{4}$ NW $\frac{1}{4}$
609' FNL 618' FWL
LAT: N 40.28879"
LONG: W 104.60003"
PDOP: 1.9
ELEV: 4862'

(13)
SHELTON G25-17
NE $\frac{1}{4}$ NE $\frac{1}{4}$
PER COGCC:
1076' FNL
1268' FEL
PLUGGED &
ABANDONED

(14)
SHELTON G25-27D
NE $\frac{1}{4}$ NE $\frac{1}{4}$
PER COGCC:
641' FNL
537' FEL
PLUGGED &
ABANDONED

(15)
CPC PLUSS 25-01
NE $\frac{1}{4}$ NE $\frac{1}{4}$
594' FNL 543' FEL
LAT: N 40.28881"
LONG: W 104.60419"
PDOP: 1.7
ELEV: 4828'

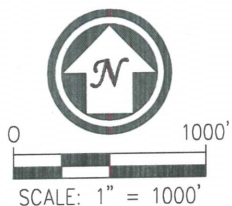
1. THIS SKETCH DOES NOT REPRESENT
A BOUNDARY SURVEY.
2. HORIZONTAL DATUM IS NAD 83.
3. VERTICAL DATUM IS NAVD 88.

1. THIS SKETCH DOES NOT REPRESENT
A BOUNDARY SURVEY.
2. HORIZONTAL DATUM IS NAD 83.
3. VERTICAL DATUM IS NAVD 88.

2. HORIZONTAL DATUM IS NAD 83.
3. VERTICAL DATUM IS NAVD 88.

LEGEND

-  PROPOSED WELL  BOTTOM HOLE
 EXISTING WELL  ABANDONED WELL



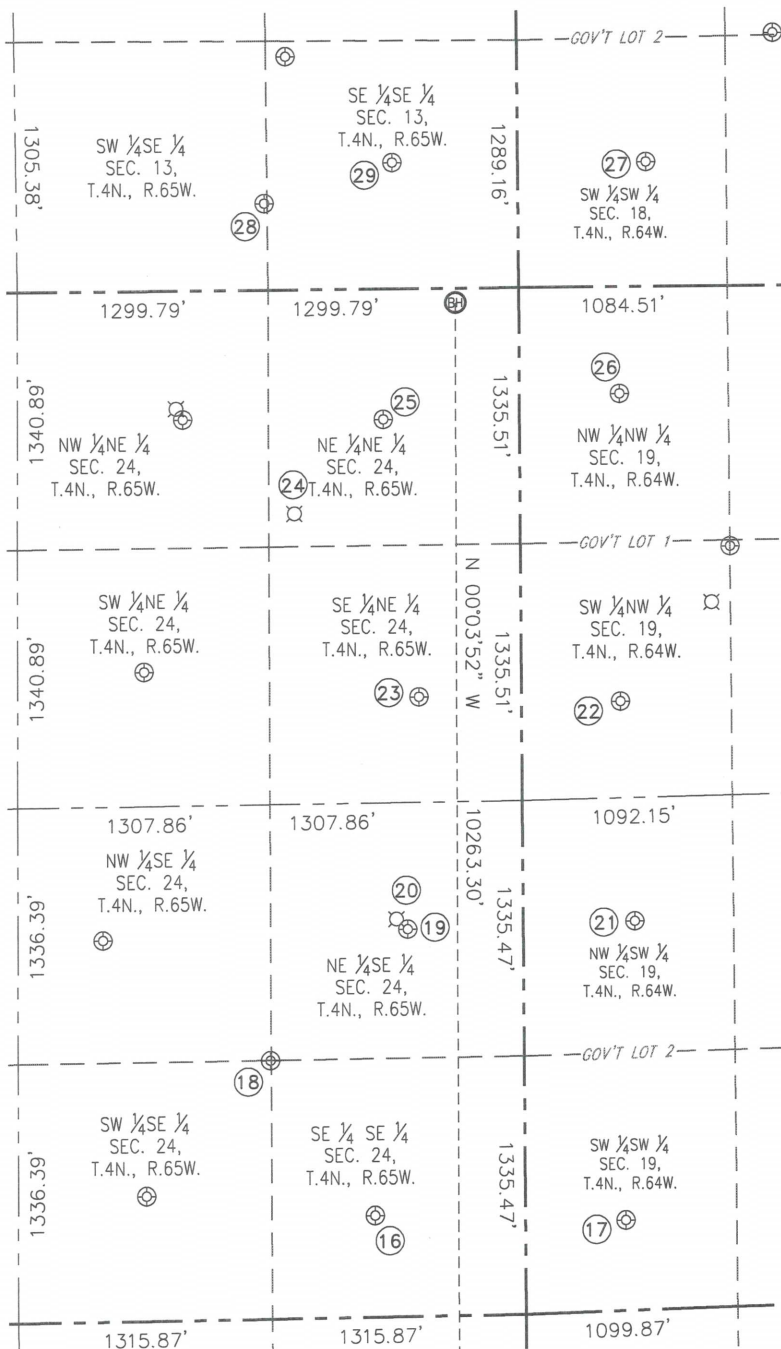
SCALE: 1" = 1000'

DATE: 01/10/2014
JOB NO.: NE13301

SITE SKETCH

HEARTLAND G25-72-1HN
(SHEET 2 OF 2)

SECTION: 25
TOWNSHIP: 4N
RANGE: 65W



16
 BURKE RG 24-16
 SE $\frac{1}{4}$ SE $\frac{1}{4}$
 525' FSL 779' FEL
 LAT: N 40.29189°
 LONG: W 104.60502°
 PDOP: 1.4
 ELEV: 4834'

(18)
BROOMFIELD 24-45
SW $\frac{1}{4}$ SE $\frac{1}{4}$
1335' FSL 1317' FEL
LAT: N 40.29412°
LONG: W 104.60693°
PDOP: 1.3
ELEV: 4816'

(20)
 BURKE 24-3S
 NE $\frac{1}{4}$ SE $\frac{1}{4}$
 PER COGCC:
 2063' FSL
 658' FEL
 PLUGGED &
 ABANDONED

(22)
 FREEDOM ONE C19-5
 SW $\frac{1}{4}$ NW $\frac{1}{4}$
 2162' FNL 512' FWL
 LAT: N 40.299715"
 LONG: W 104.60034"
 PDOP: 1.8
 ELEV: 4859'

②4
BROOMFIELD 24-15
NE₄NE₄
PER COGCC:
1166' FNL
1172' FEL
PLUGGED &
ABANDONED

(26)
FREEDOM TWO C19-4
NW $\frac{1}{4}$ NW $\frac{1}{4}$
557' FNL 519' FWL
LAT: N 40.30356°
LONG: W 104.60028°
PDOP: 2.6
ELEV: 4857'

(28) TUMMERMAN 15-13
SEX4SEX
450' FSL 1317' FEL
LAT: N 40.30637°
LONG: W 104.60684°
PDOP: 1.5
ELEV: 4829'

①7
VICTOR C19-13
SW $\frac{1}{4}$ SW $\frac{1}{4}$
468' FSL 520' FWL
LAT: N 40.29174°
LONG: W 104.60036°
PDOP: 1.7
ELEV: 4862'

19
 BURKE 24-3
 NE $\frac{1}{4}$ SE $\frac{1}{4}$
 2010' FSL 600' FEL
 LAT: N 40.29596"
 LONG: W 104.60435"
 PDOP: 1.3
 ELEV: 4830'

(21)
 VICTOR C19-12
 NW $\frac{1}{4}$ SW $\frac{1}{4}$
 2022' FSL 579' FEL
 LAT: N 40.29601"
 LONG: W 104.60012"
 PDOP: 2.1
 ELEV: 4861'

(23)
 BURKE RG 24-8
 SE $\frac{1}{4}$ NE $\frac{1}{4}$
 2127' FNL 532' FEL
 LAT: N 40.29928°
 LONG: W 104.60408°
 PDOP: 1.2
 ELEV: 4836'

(25)
API 24-1
NE $\frac{1}{4}$ NE $\frac{1}{4}$
680' FNL 708' FEL
LAT: N 40.30325°
LONG: W 104.60468°
PDOP: 2.0
ELEV: 4837'

(27)
 FARR
 SW $\frac{1}{4}$ SW $\frac{1}{4}$
 651' FSL 665' FEL
 LAT: 40.30687°
 LONG: 104.59973°
 PDOP: 3.1
 ELEV: 4848

(29)
HUNTSMAN G13-16
SE $\frac{1}{4}$ SE $\frac{1}{4}$
658' FNL 652' FEL
LAT: N 40.30692°
LONG: W 104.60446°
PDOP: 1.8
ELEV: 4824'

NOTES:

- NOTES:
1. THIS SKETCH DOES NOT REPRESENT A BOUNDARY SURVEY.
 2. HORIZONTAL DATUM IS NAD 83.
 3. VERTICAL DATUM IS NAVD 88.



0 1000'

SCALE: 1" = 1000'

LEGEND

-  PROPOSED WELL  BOTTOM HOLE
 EXISTING WELL ABANDONED WELL

DATE: 01/10/2014
JOB NO.: NE13301