

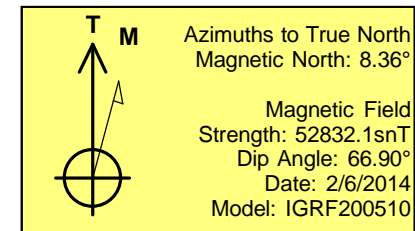
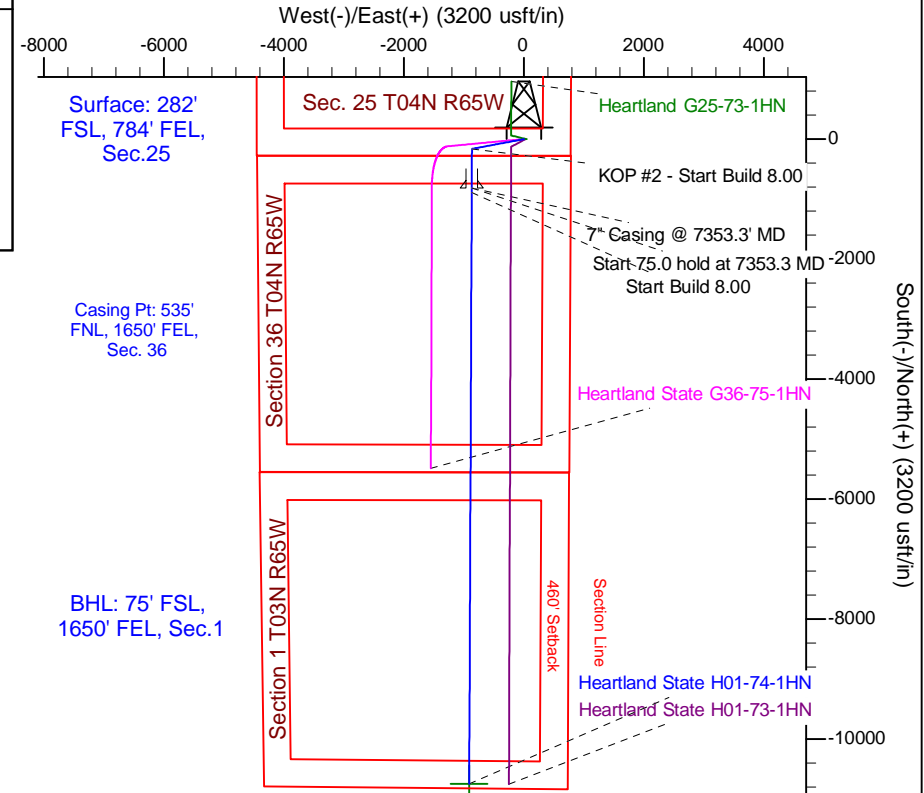
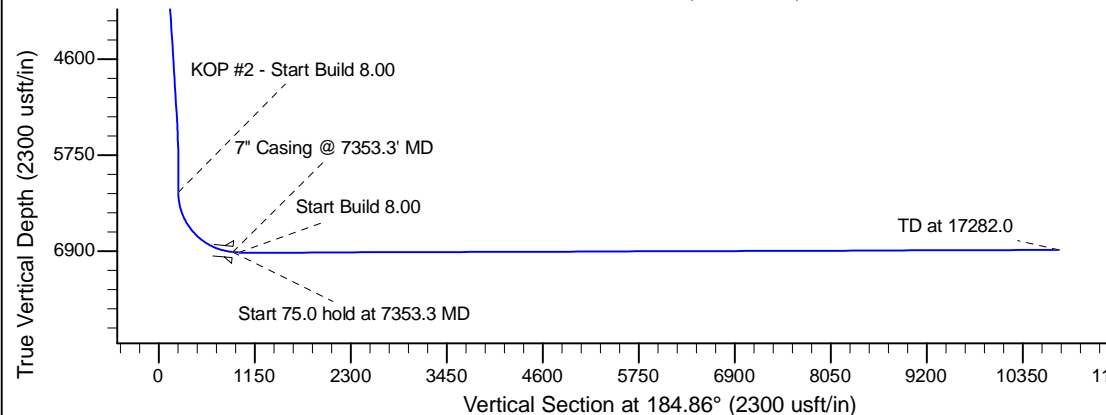
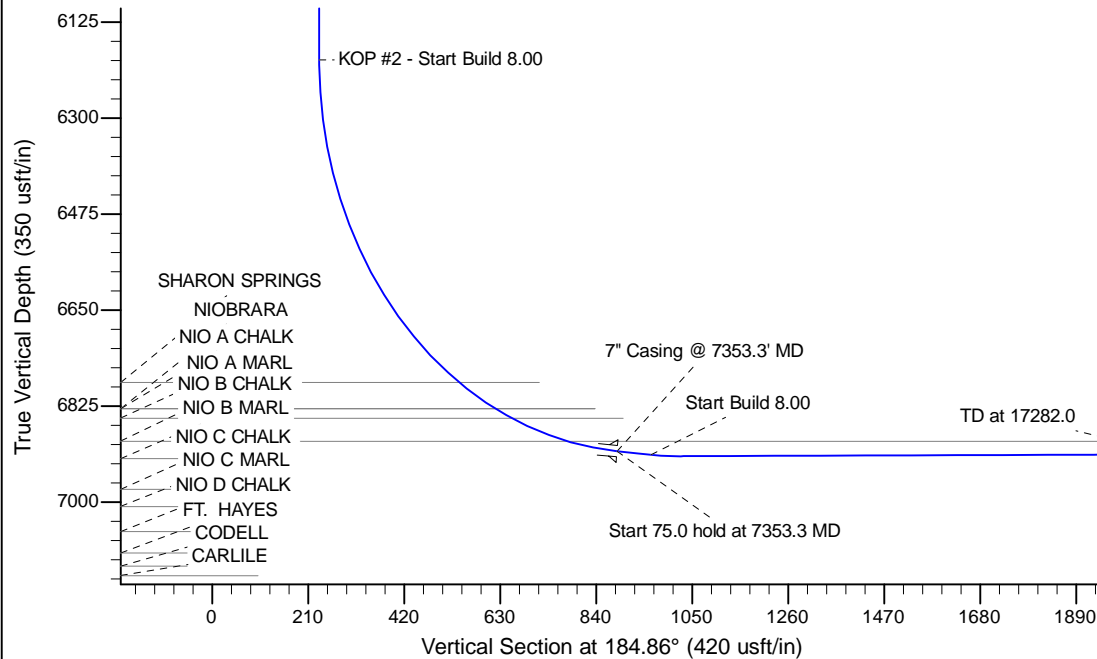
Project: Wattenberg Field
 Site: G (Sec.25-T04N-R65W) Weld County, CO
 Well: Heartland State H01-74-1HN
 Wellbore: Wellbore #1
 Design: APD - Rev 0

Northern Region Drilling - Working

Geodetic System: US State Plane 1983
 Datum: North American Datum 1983
 Ellipsoid: GRS 1980
 Zone: Colorado Northern Zone
 System Datum: Mean Sea Level

SECTION DETAILS

Sec	MD	Inc	Azi	TVD	+N/-S	+E/-W	Dleg	TFace	VSec	Target
1	0.0	0.00	0.00	0.0	0.0	0.0	0.00	0.00	0.0	
2	1500.0	0.00	0.00	1500.0	0.0	0.0	0.00	0.00	0.0	
3	2165.3	13.31	259.47	2159.3	-14.1	-75.6	2.00	259.47	20.4	
4	5331.6	13.31	259.47	5240.7	-147.2	-792.1	0.00	0.00	213.7	
5	5996.9	0.00	0.00	5900.0	-161.3	-867.7	2.00	180.00	234.1	
6	6290.8	0.00	0.00	6193.8	-161.3	-867.7	0.00	0.00	234.1	
7	7353.3	85.00	180.24	6907.3	-815.0	-870.5	8.00	180.24	885.8	
8	7428.3	85.00	180.24	6913.8	-889.7	-870.8	0.00	0.00	960.3	
9	7493.3	90.20	180.24	6916.6	-954.7	-871.1	8.00	0.00	1025.0	
10	17282.0	90.20	180.24	6882.4	-10743.3	-912.8	0.00	0.00	10782.0	Heartland State H01-74-1HN BHL 75'FSL, 1650'FEL



WELL DETAILS: Heartland State H01-74-1HN				
Ground Level: 4834.0				
0.0	0.0	Northing 1344913.87	Easting 3249673.92	Latitude 40.276730
		Longitude -104.605150		
Plan: APD - Rev 0 (Heartland State H01-74-1HN/Wellbore #1)				
Created By: Shailey Jewell			Date: 14:12, February 10 2014	
OK to submit with 2A as per Noble Drilling				
2/11/2014 9:01				