



Radial Cement Bond  
Gamma Ray  
CCL

Company	Bill Barrett Corporation	
Well	70 Ranch 04-63-3225CH	
Field	Wattenberg	
County	Weld	
State	Colorado	
Company	Bill Barrett Corporation	
Well	70 Ranch 04-63-3225CH	
Field	Wattenberg	
County	Weld	
State	Colorado	
Location:	API # : 05-123-37921	
2018 FSL & 234' FWL		
SEC 3	TWP 4N	RGE 63W
Permanent Datum	GL	Elevation 4559
Log Measured From	KB 23	Elevation 4582
Drilling Measured From	GL	D.F. 4581
		G.L. 4559

Date	2-25-2014
Run Number	1
Depth Driller	10990
Depth Logger	5760
Bottom Logged Interval	5758
Top Log Interval	Surface
Open Hole Size	8.875
Type Fluid	Water
Density / Viscosity	1.0
Max. Recorded Temp.	208
Estimated Cement Top	
Time Well Ready	
Time Logger on Bottom	
Equipment Number	4740
Location	Greeley
Recorded By	Jeremiah Bullard
Witnessed By	Johnny Dawran

Borehole Record		Tubing Record					
Run Number	Bit	From	To	Size	Weight	From	To
One	12.25	0	831				
Two	8.75	831	6816				
Three	6.185	6816	10990				

Casing Record	Size	Wgt/Ft	Top	Bottom
Surface String	9.875	36#	0	831
Prot. String				
Production String	7	26#	0	6816
Liner	4.5		6816	10990

<<< Fold Here >>>

All interpretations are opinions based on inferences from electrical or other measurements and we cannot and do not guarantee the accuracy or correctness of any interpretation, and we shall not, except in the case of gross or willful negligence on our part, be liable or responsible for any loss, costs, damages, or expenses incurred or sustained by anyone resulting from any interpretation made by any of our officers, agents or employees. These interpretations are also subject to our general terms and conditions set out in our current Price Schedule.

Comments

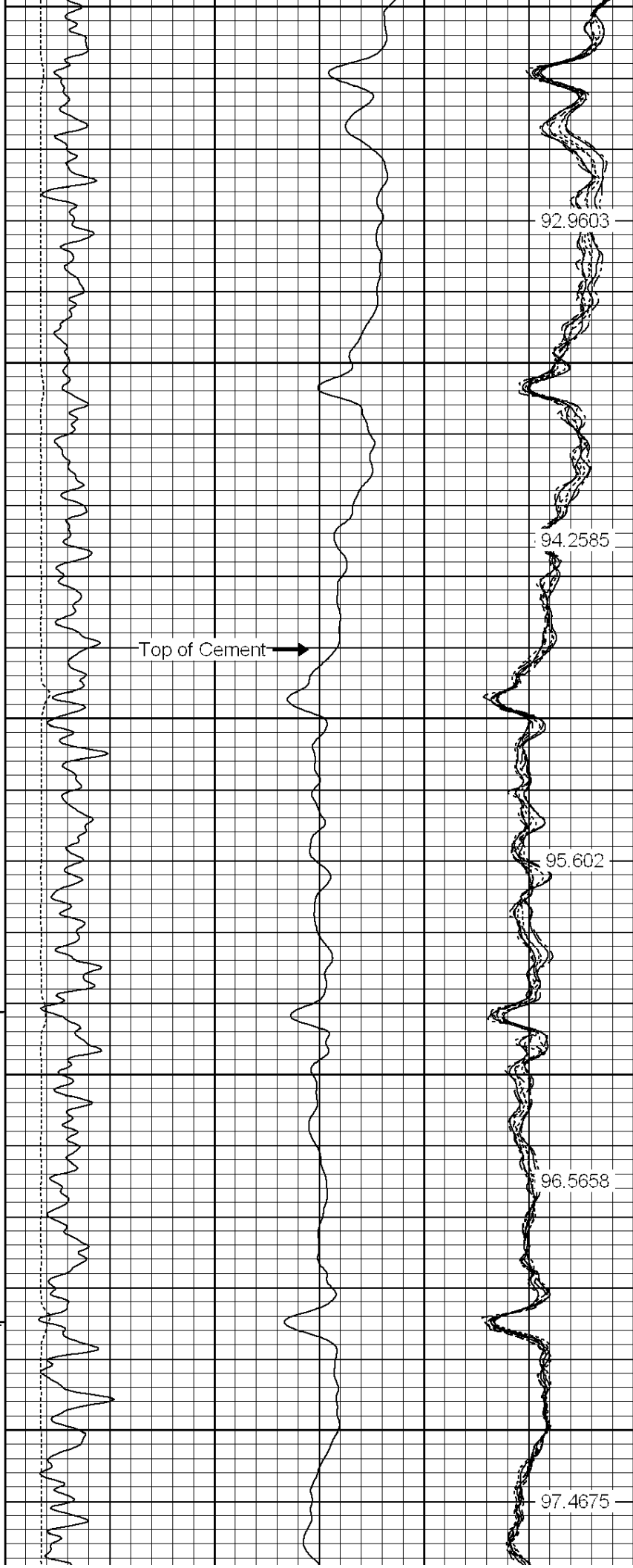
Ran CBL to verify cement  
correlated to pipe tally and liner top

Sensor	Offset (ft)	Schematic	Description	Len (ft)	OD (in)	Wt (lb)
						

			PTS275	2.83	2.75	
HEADVOLT	16.08					
IntTemp	14.66					
WVF3FT	11.41		RBT-Probe (Base)	8.92	2.75	90.00
WVFCAL	11.41		Probe Radii Bond Tool with Digital Telemetry			
WVFS1	11.41					
WVFS2	11.41					
WVFS3	11.41					
WVFS4	11.41					
WVFS5	11.41					
WVFS6	11.41					
WVFS7	11.41					
WVFS8	11.41					
WVF5FT	10.41					
CNLSC	6.00		CNT-Probe_B (275)	2.83	2.75	40.00
CNSSC	5.17		6 bow centralizer			
CCL	3.64					
			GR-Probe (275)	4.33	2.75	30.00
			Probe 2.75"			
GR	0.90					
Dataset: 70 ranch 4-63-3-3225ch.db: field/well/run1/pass6 Total Length: 18.91 ft Total Weight: 160.00 lb O.D. 2.75 in						

The figure displays a multi-panel plot on a grid. The horizontal axis (x-axis) is marked with values 0, 50, and 100. The vertical axis (y-axis) has labels 88.3337, 89.6885, 90.7533, and 91.7997. The top panel shows a highly oscillatory, noisy signal. Below it is a smooth, continuous curve. The bottom panel features a series of vertical bars or pulses, with some labeled with values like 88.3337, 89.6885, 90.7533, and 91.7997. The plot is rendered in black and white with a grid background.

150  
200  
250  
300  
350



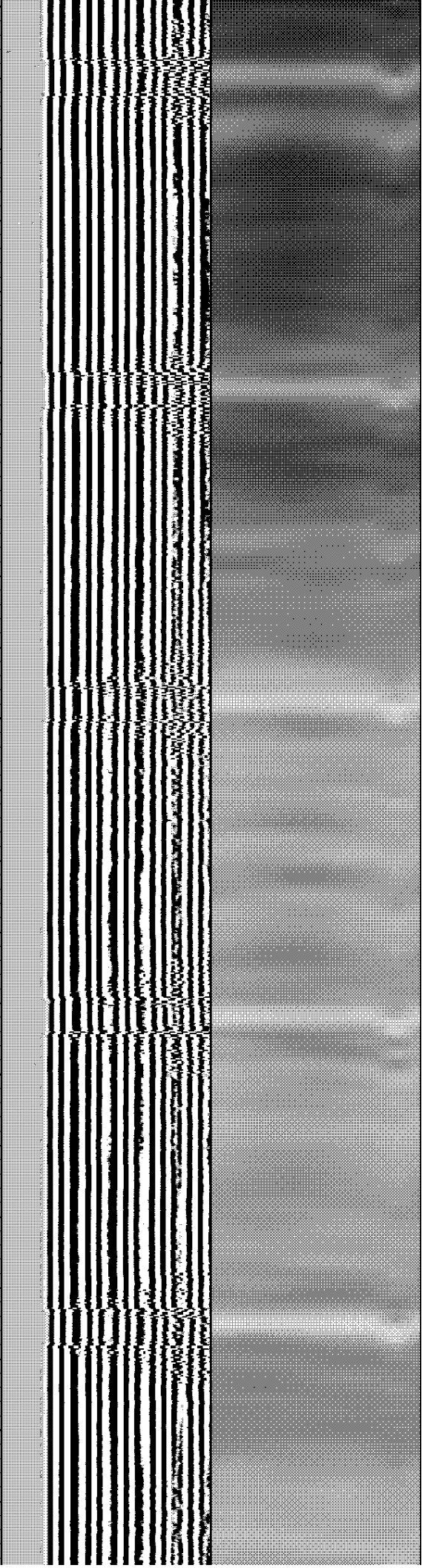
92.9603

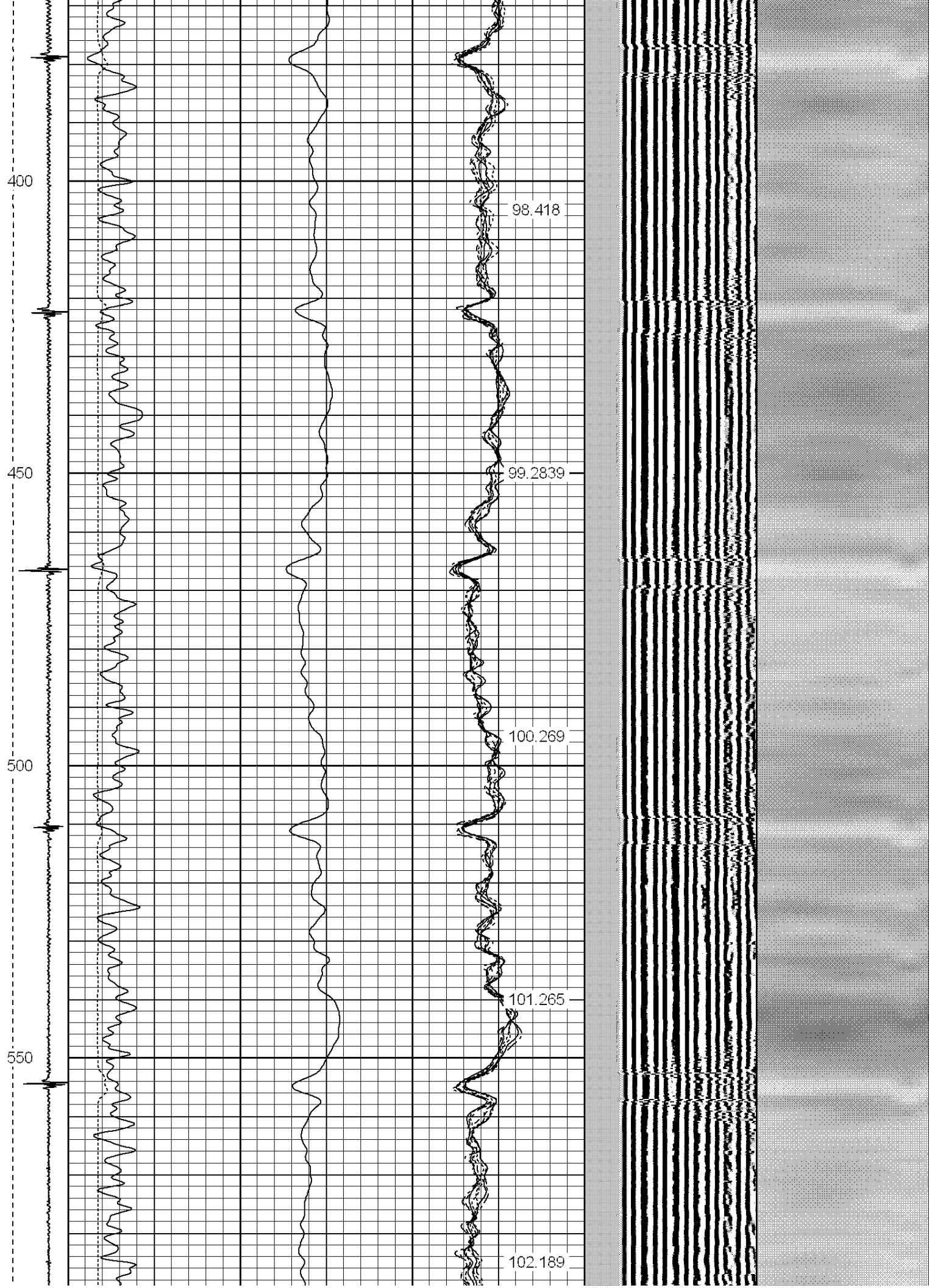
94.2585

95.602

96.5658

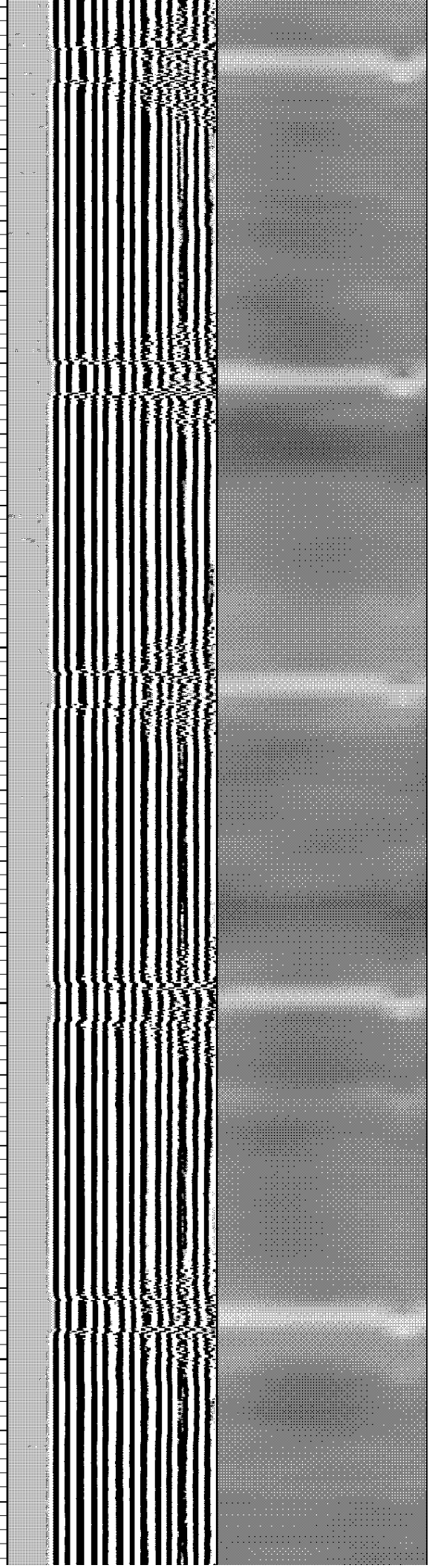
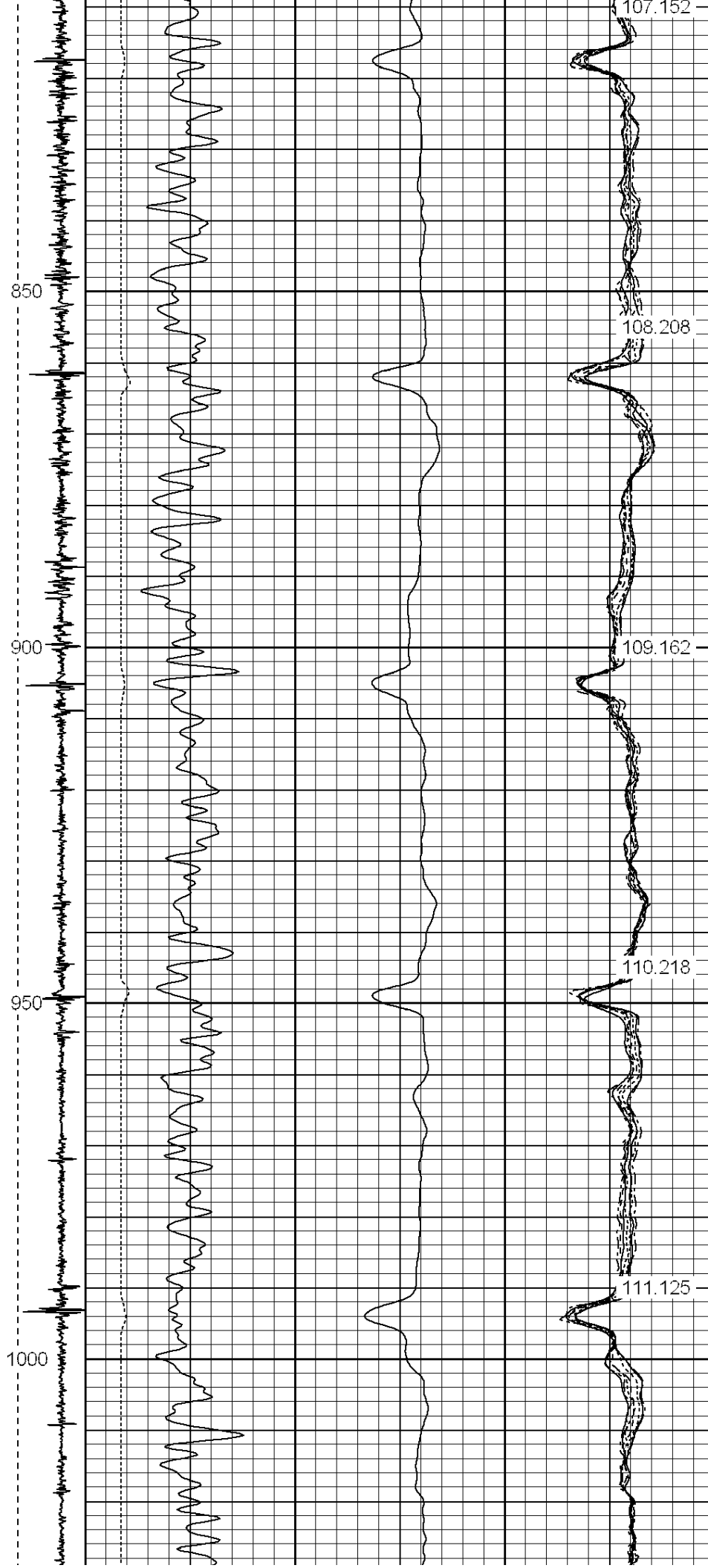
97.4675

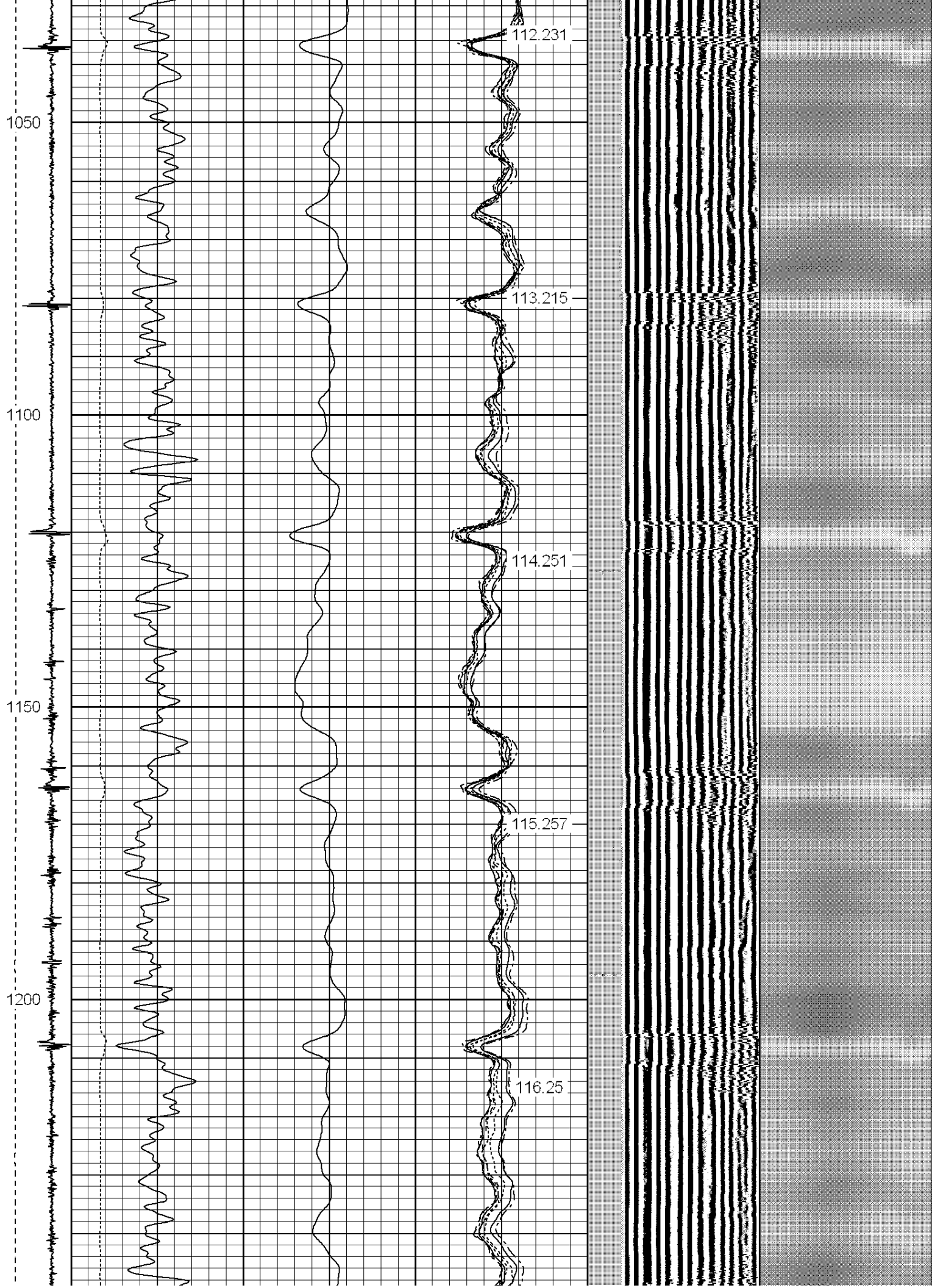






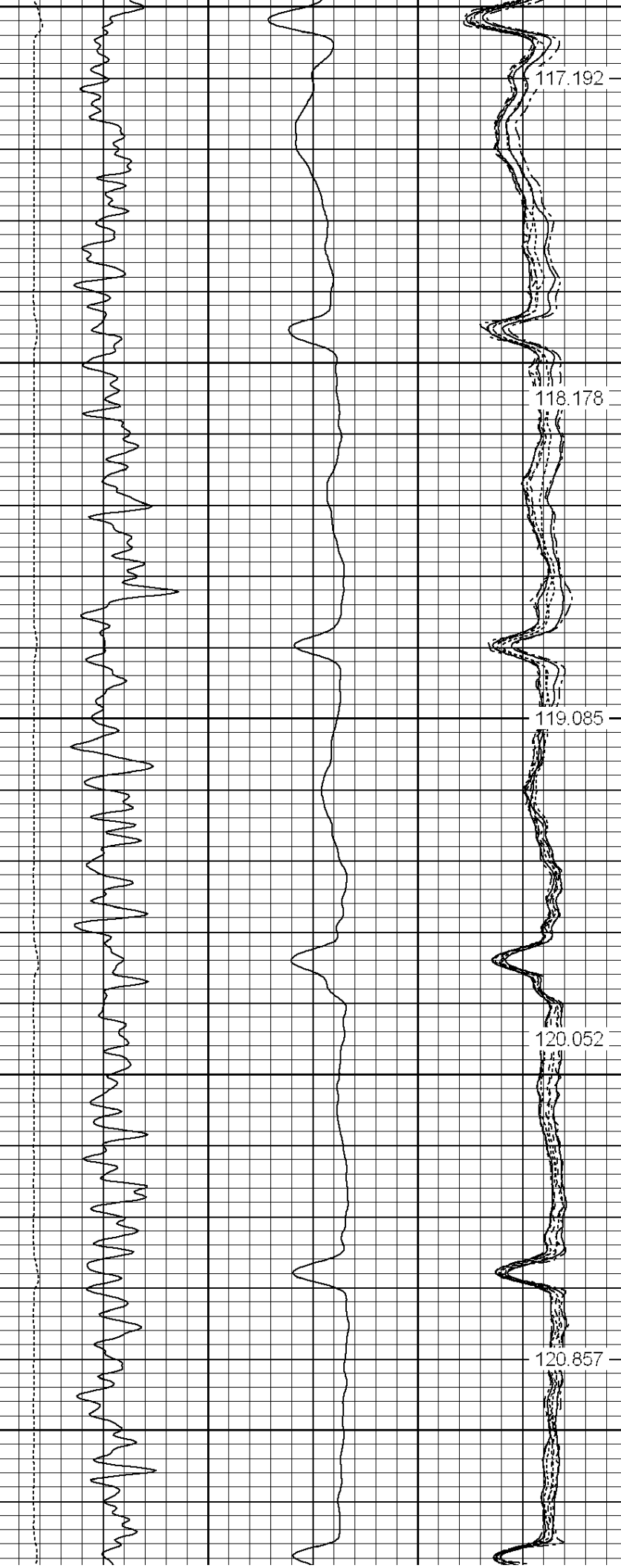




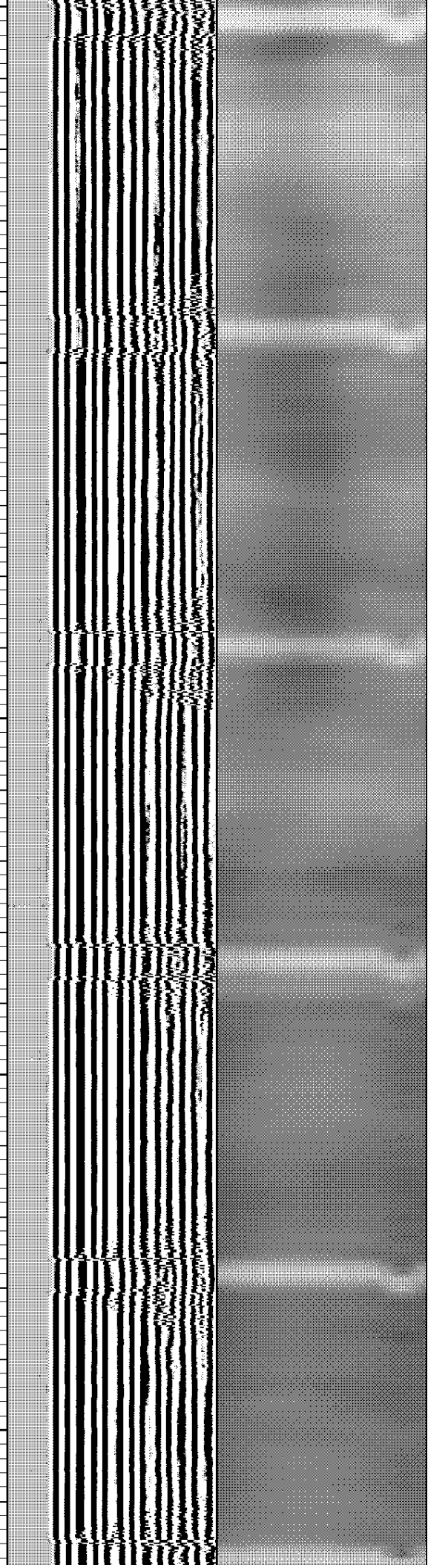


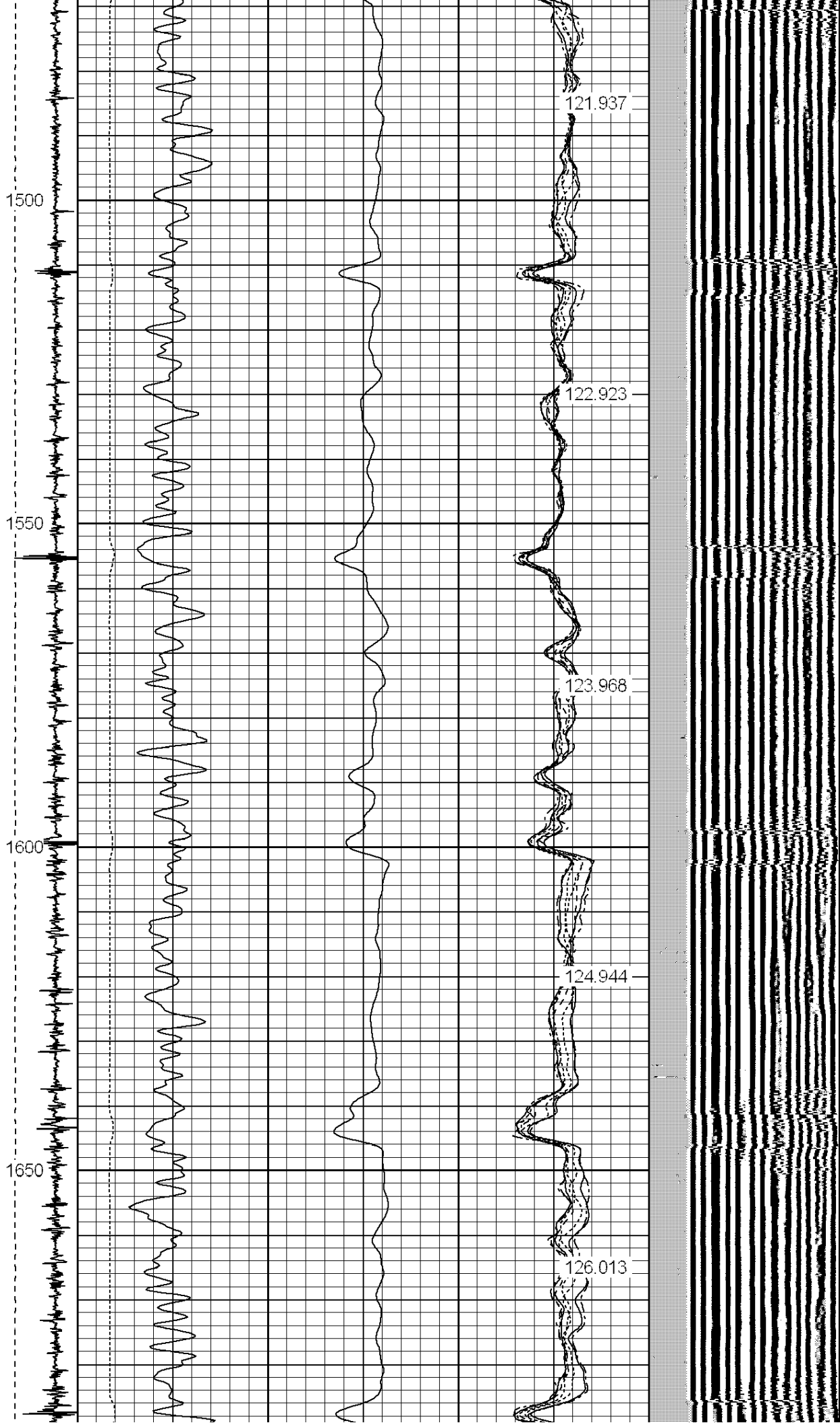


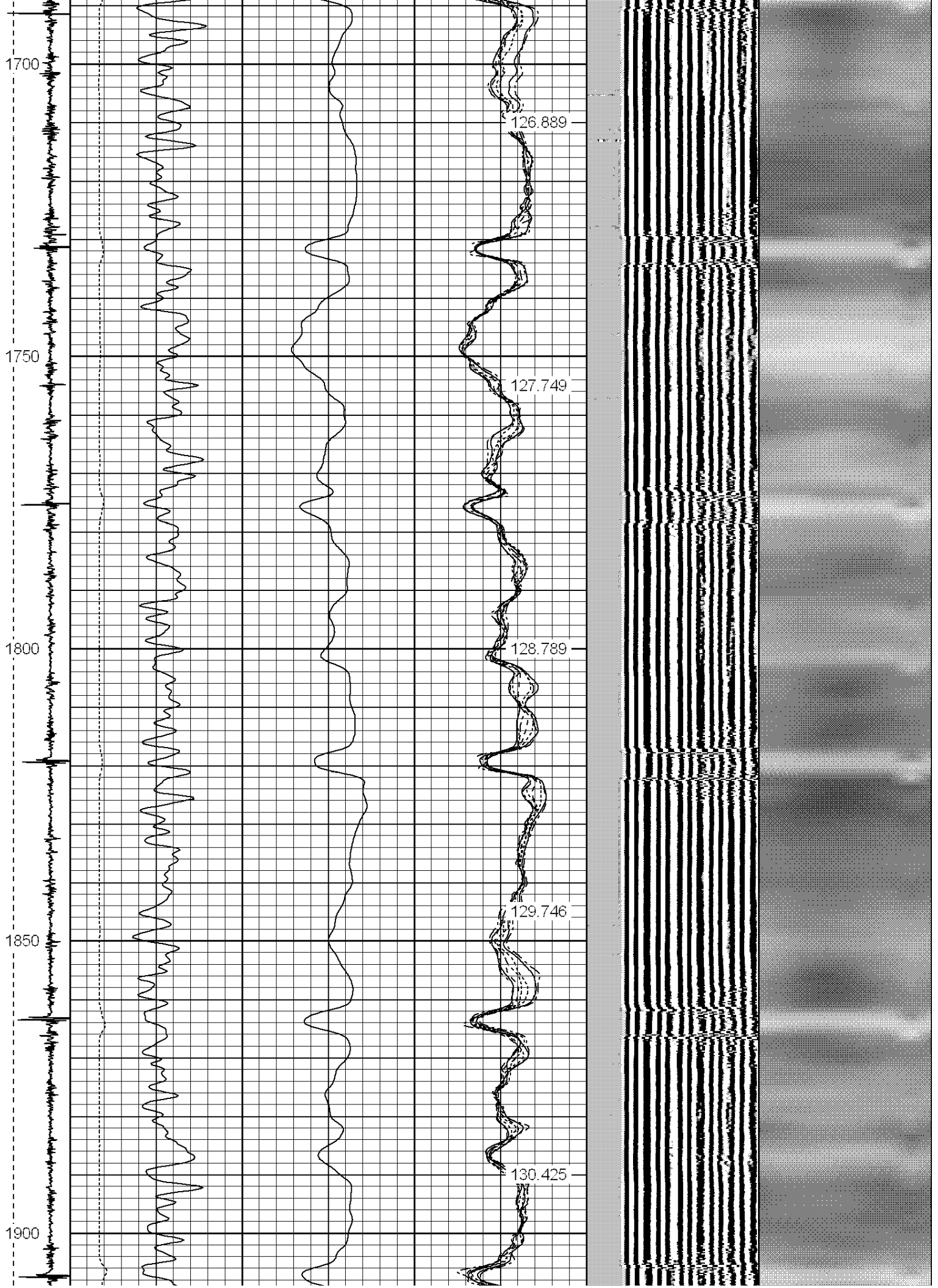
1250  
1300  
1350  
1400  
1450



117.192  
118.178  
119.085  
120.052  
120.857





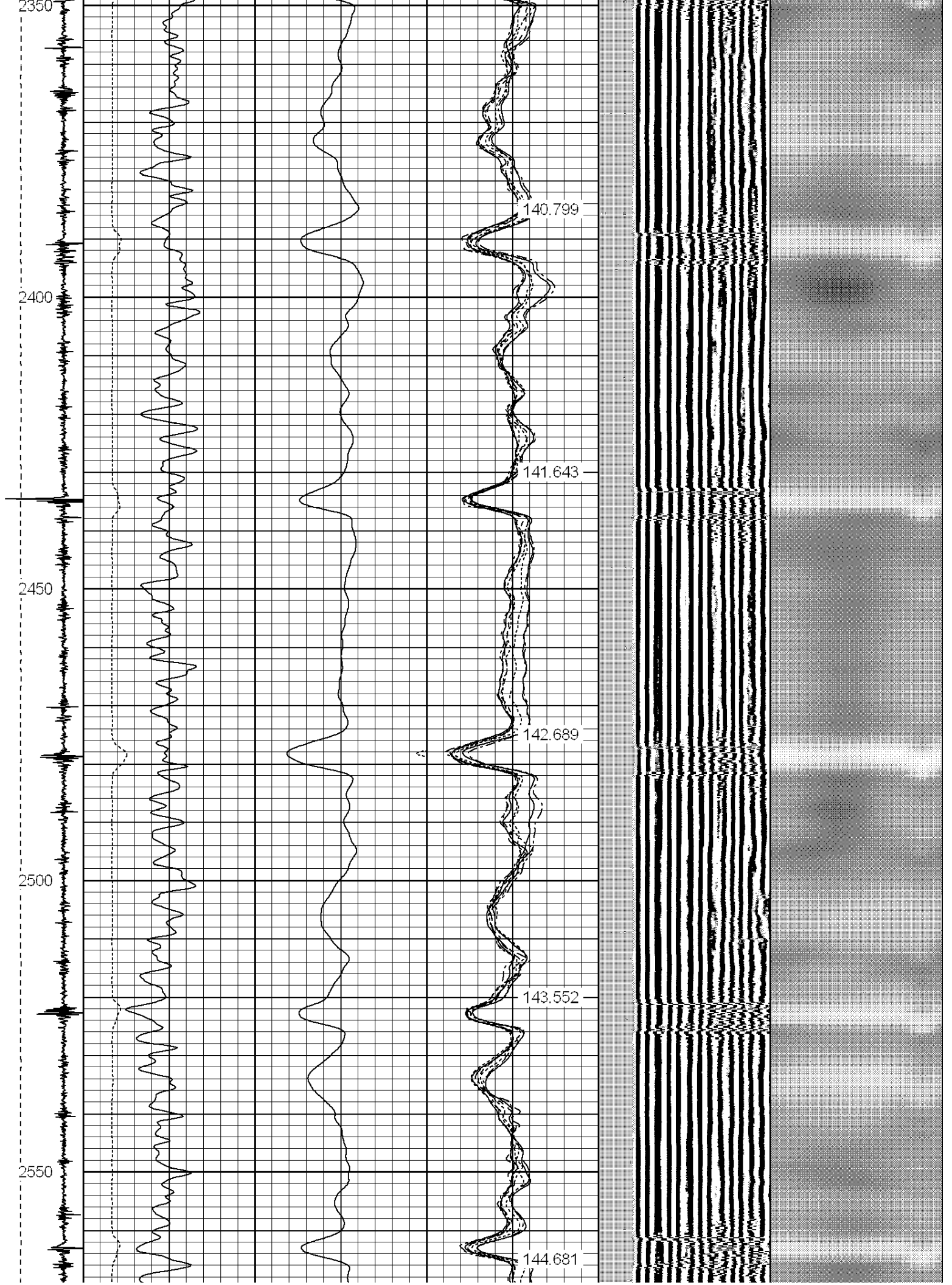












2600

2650

2700

2750

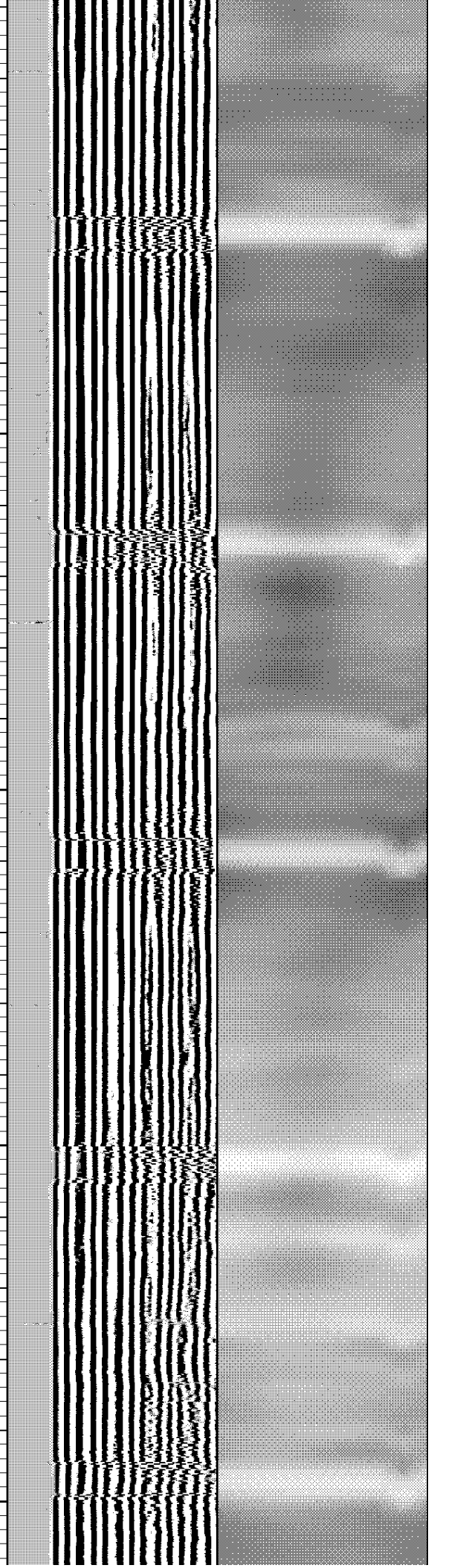
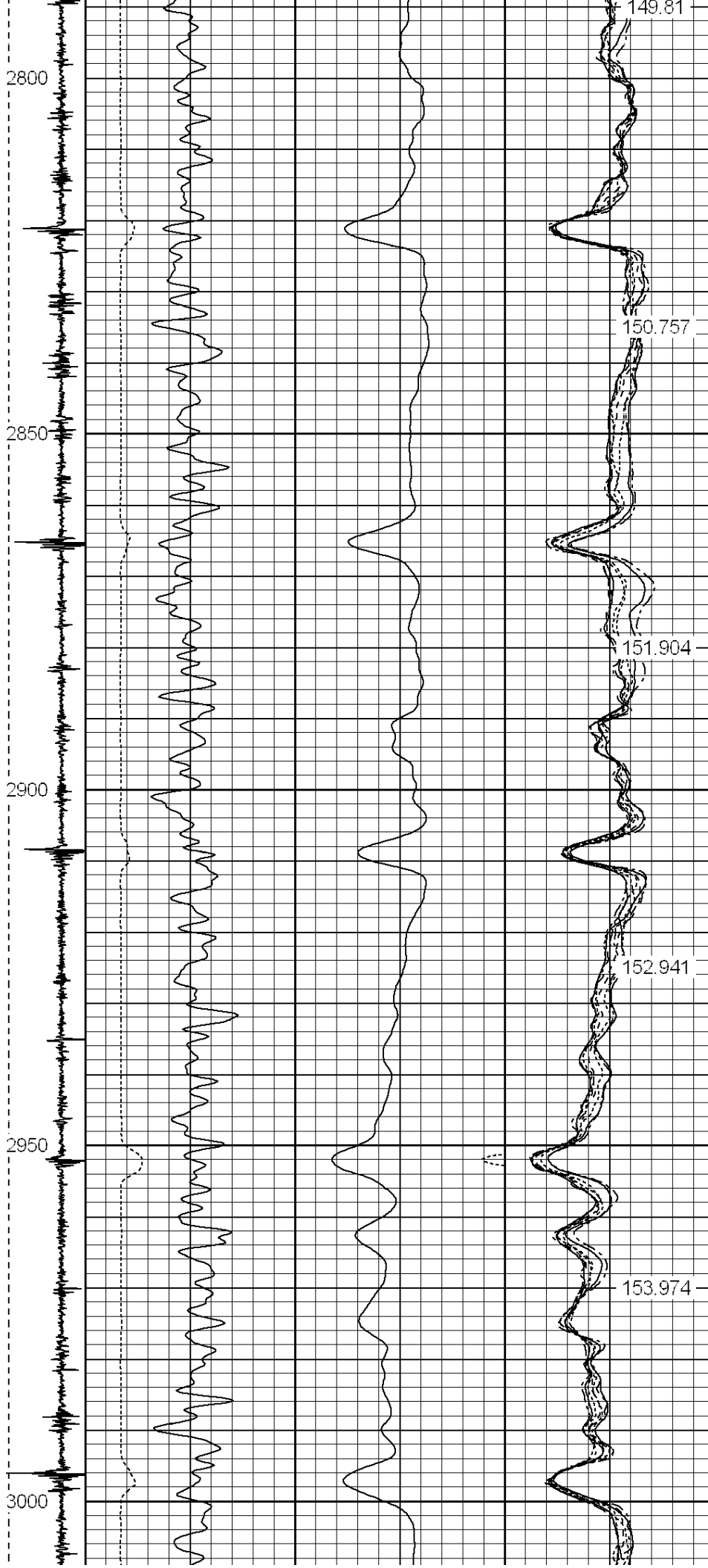
145.649

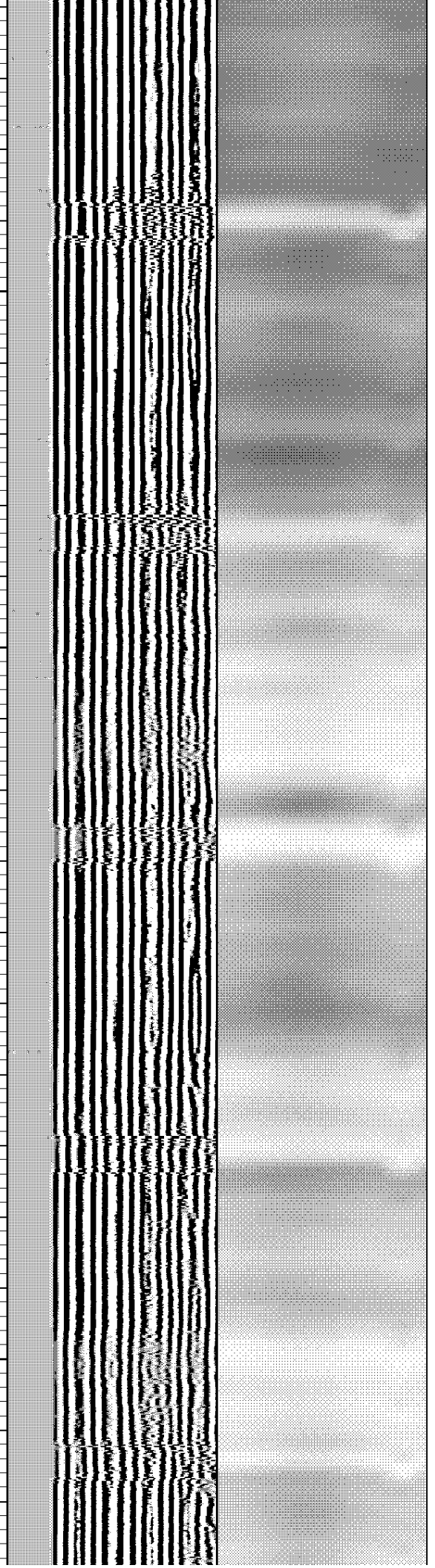
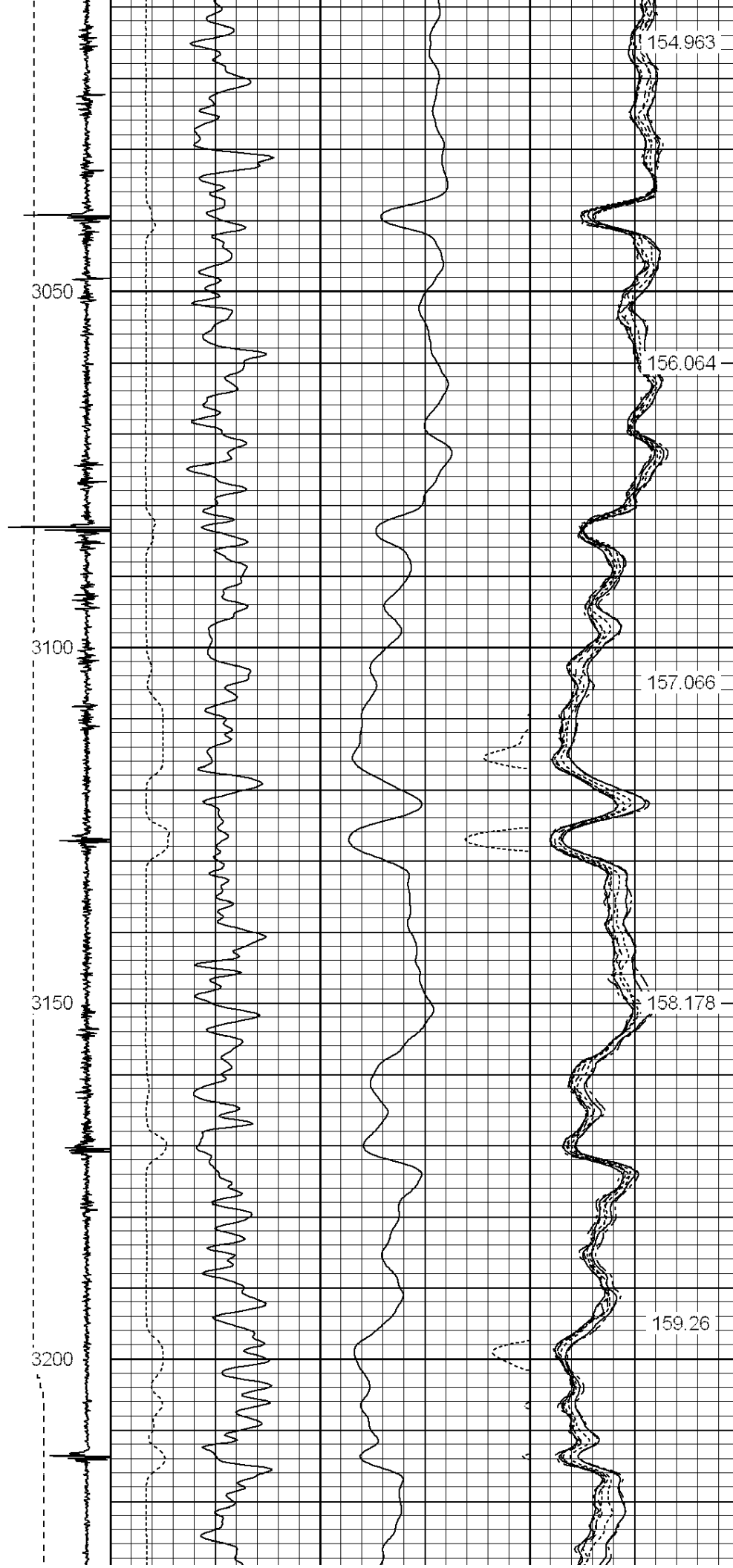
146.699

147.651

148.757



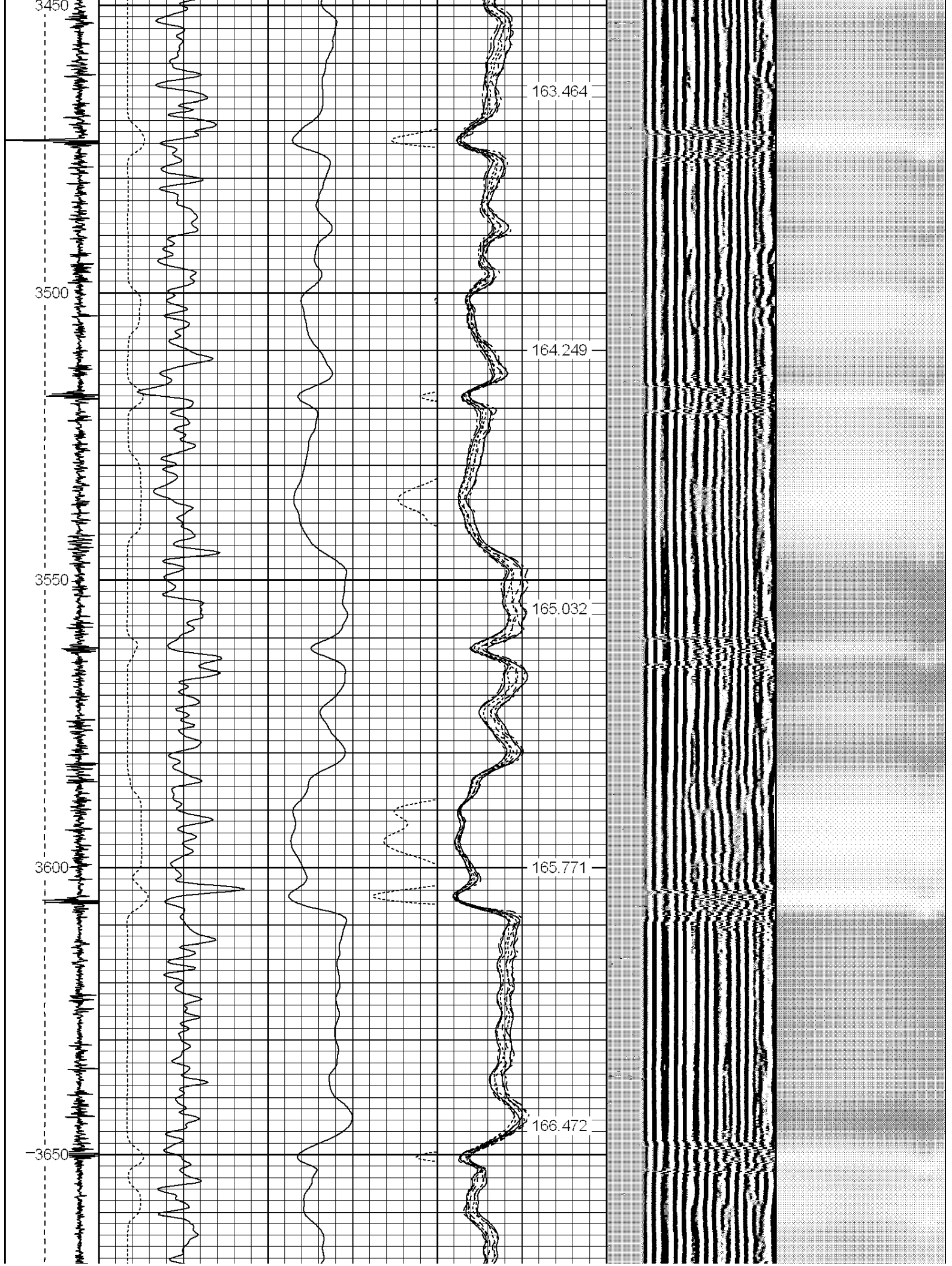


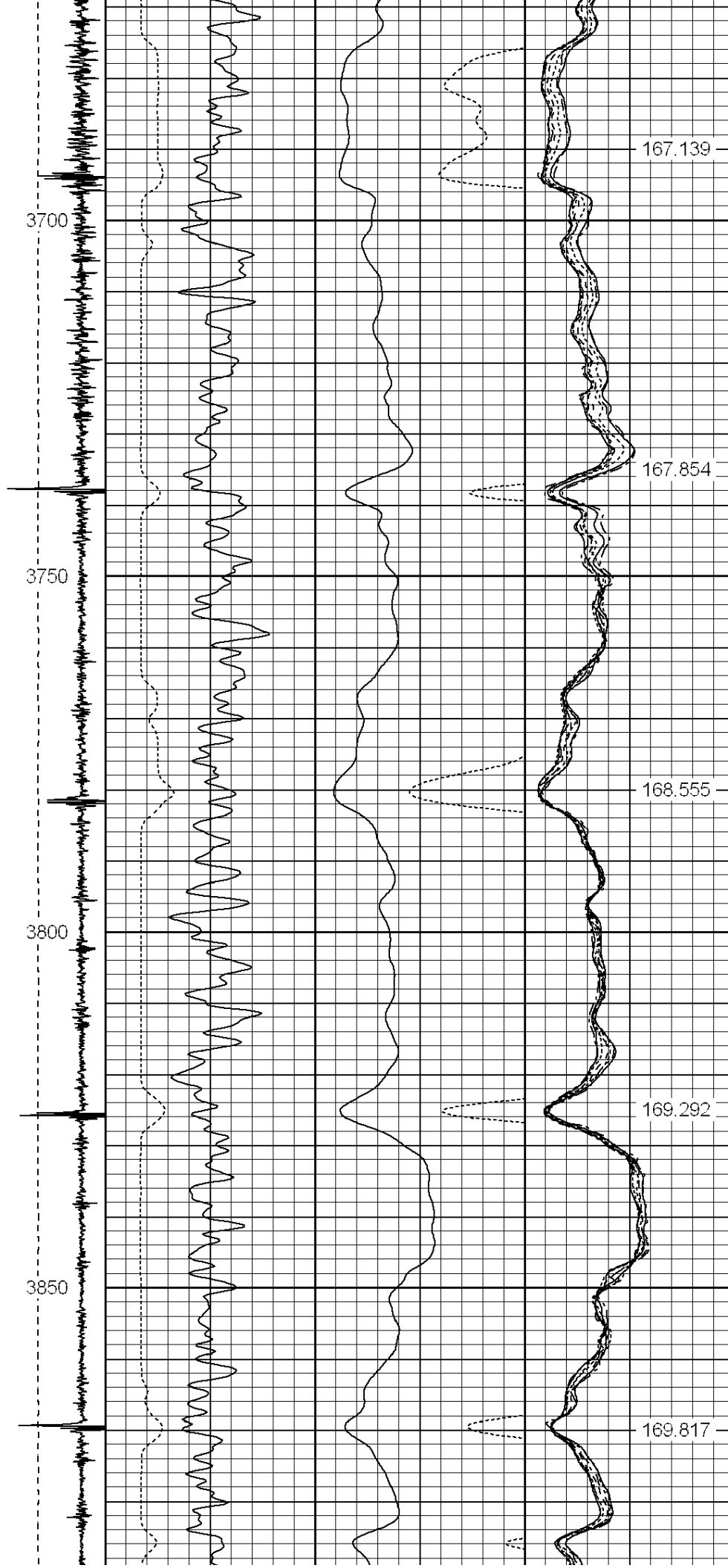


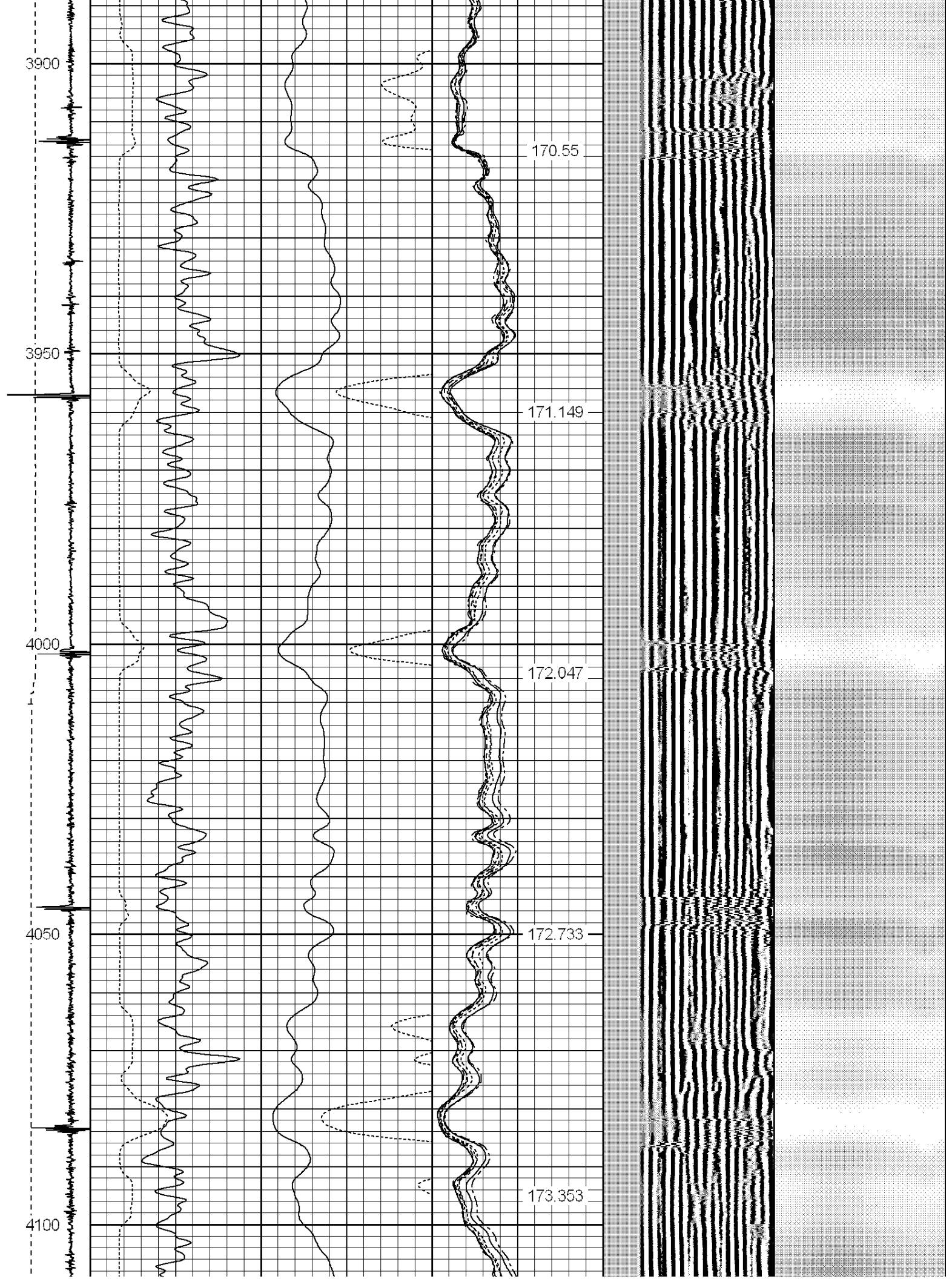


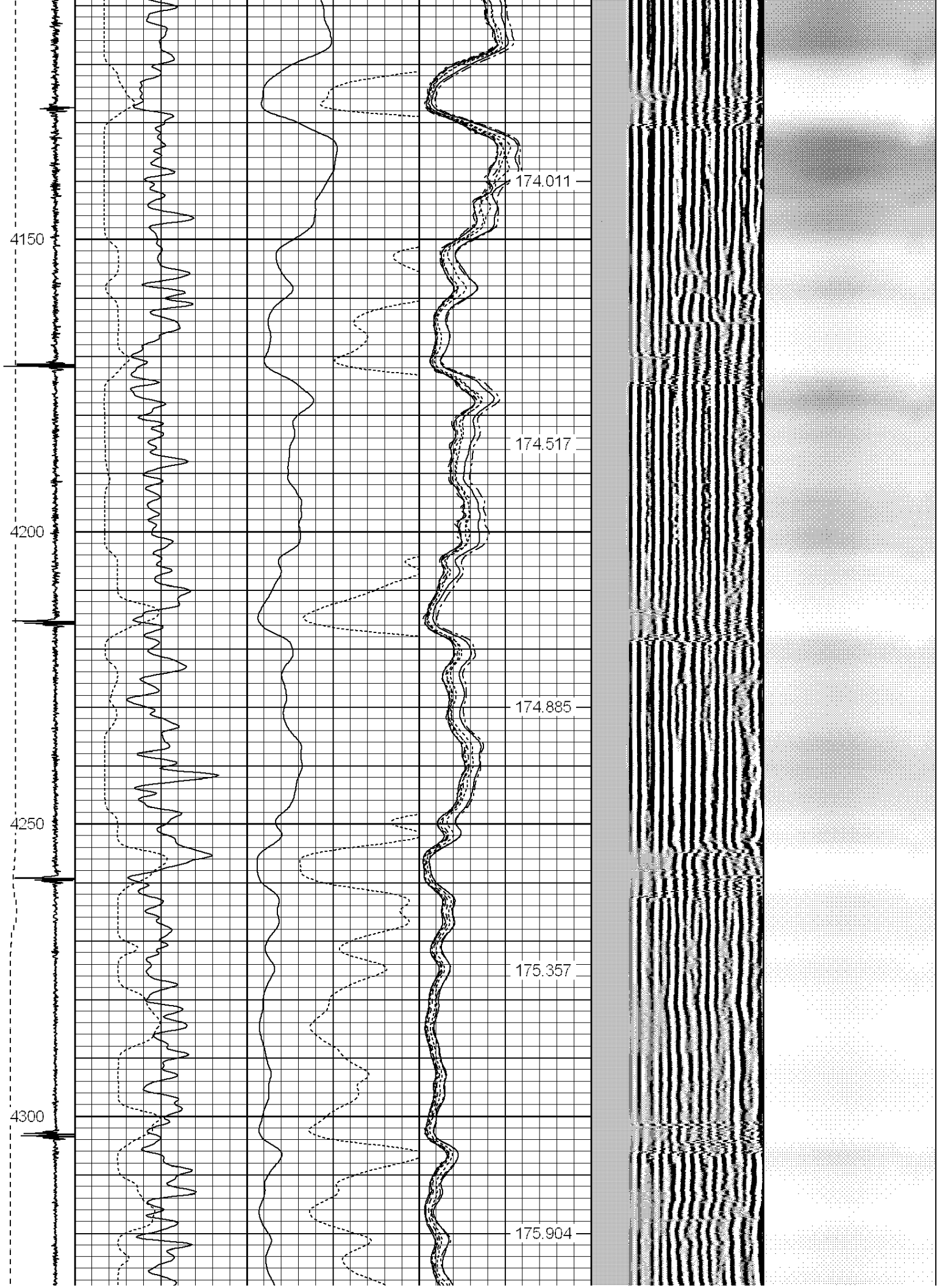












4350

4400

4450

4500

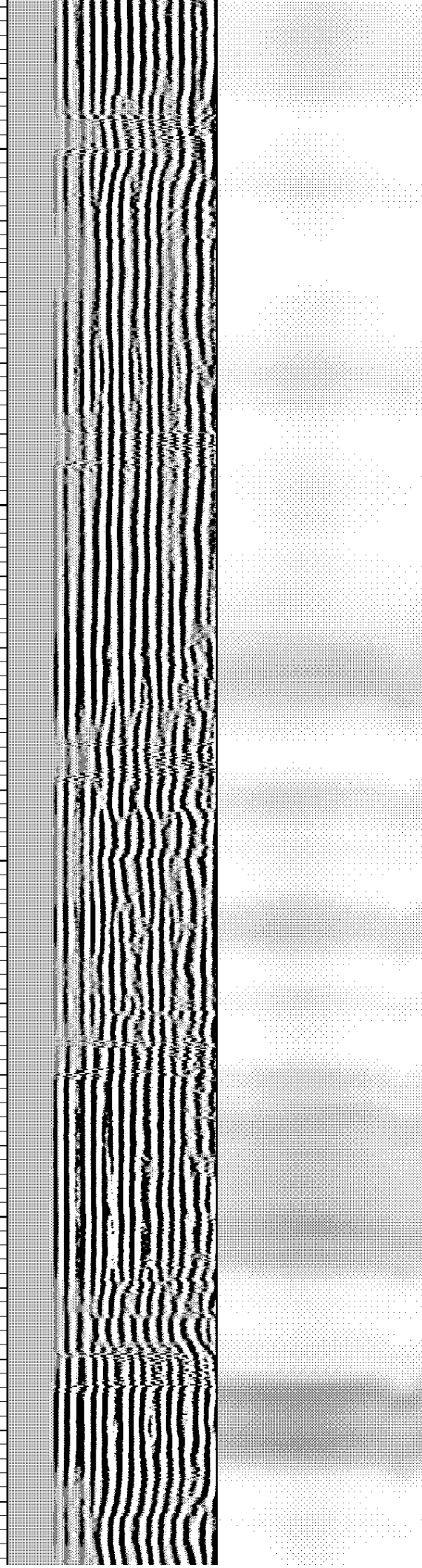
176.343

176.859

177.313

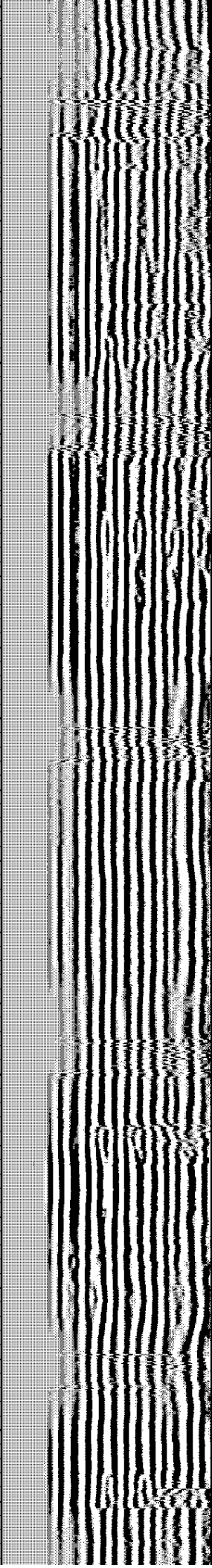
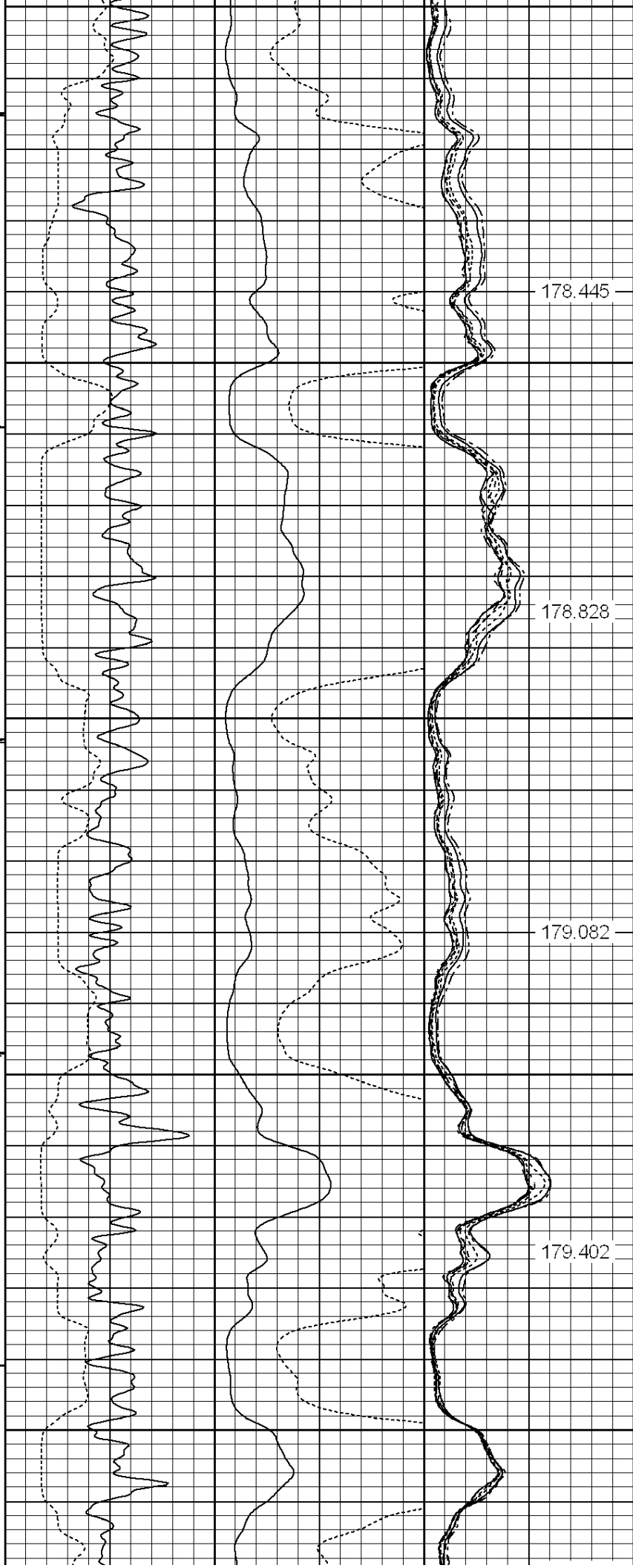
177.726

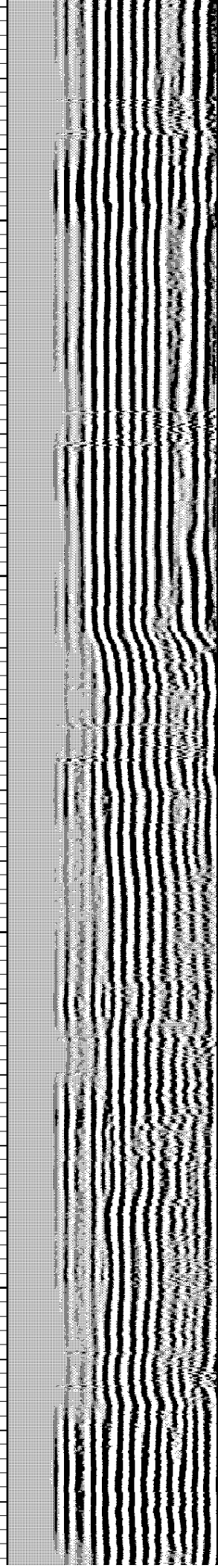
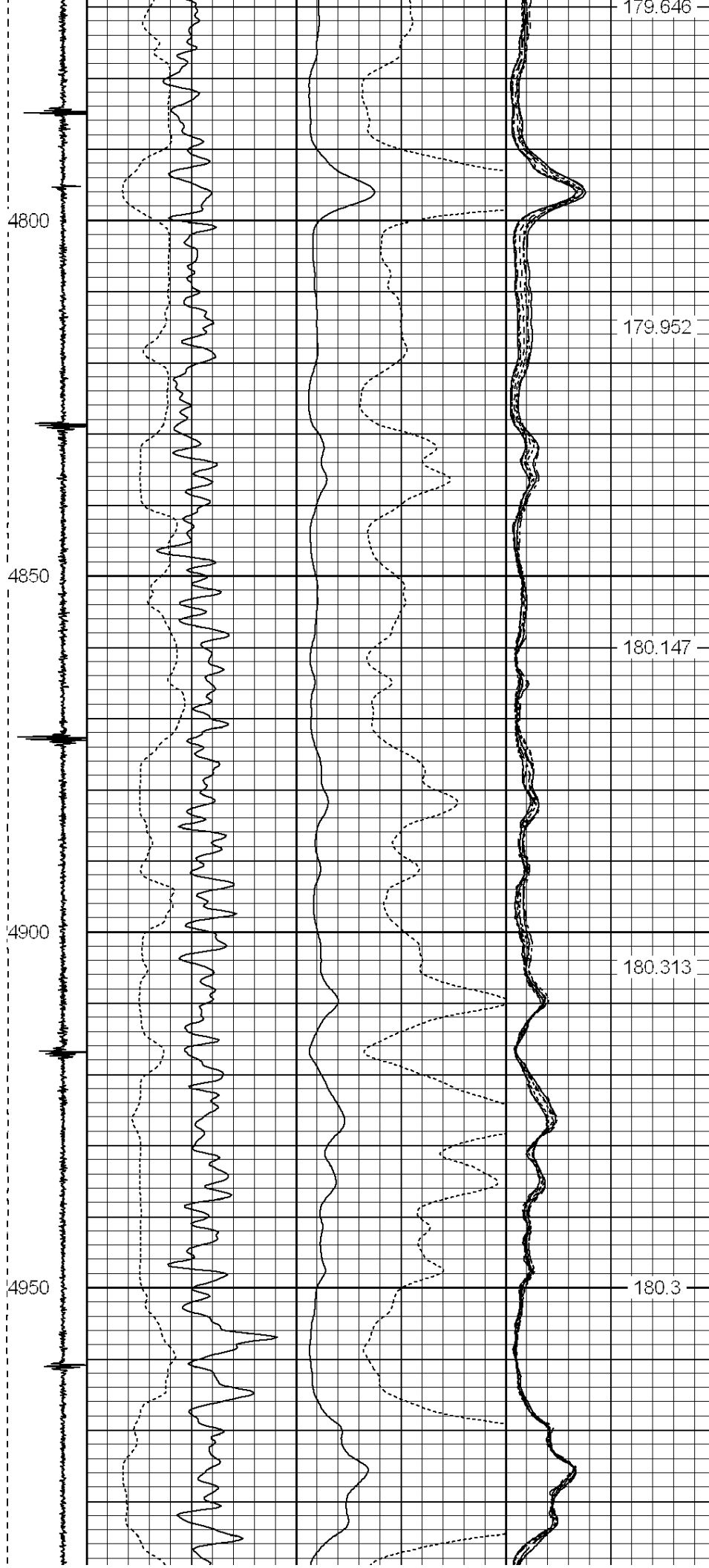
178.069

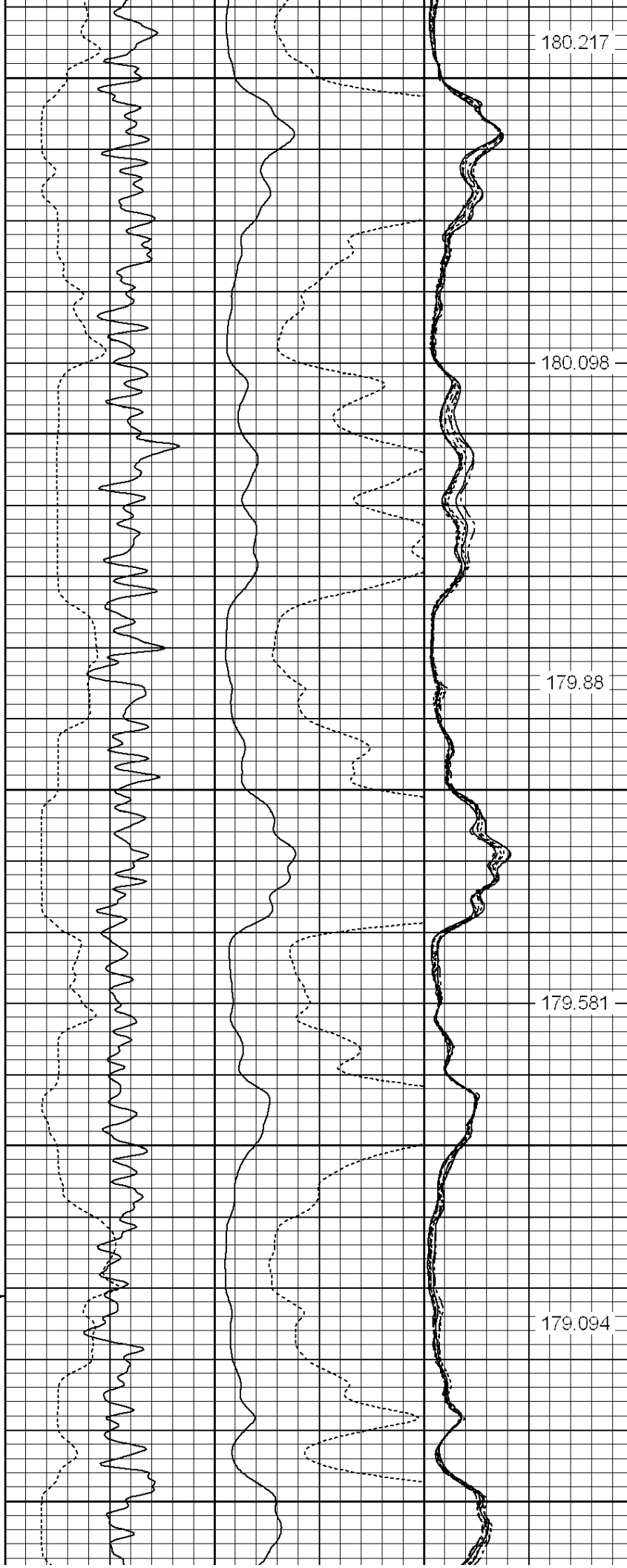




4550  
4600  
4650  
4700  
4750







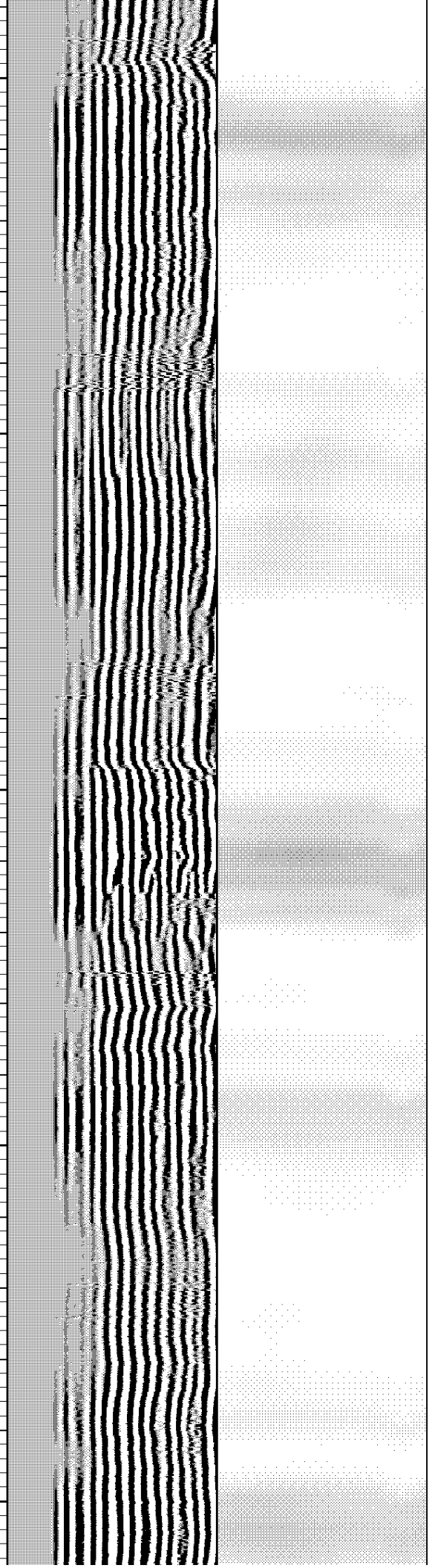
180.217

180.098

179.88

179.581

179.094



5250

5300

5350

5400

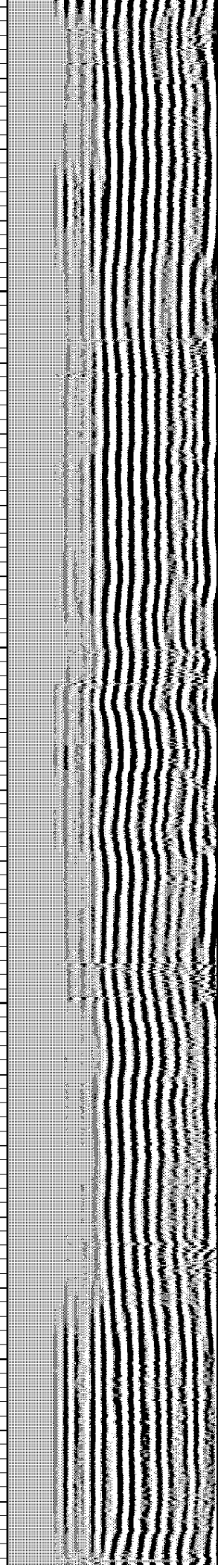
178.604

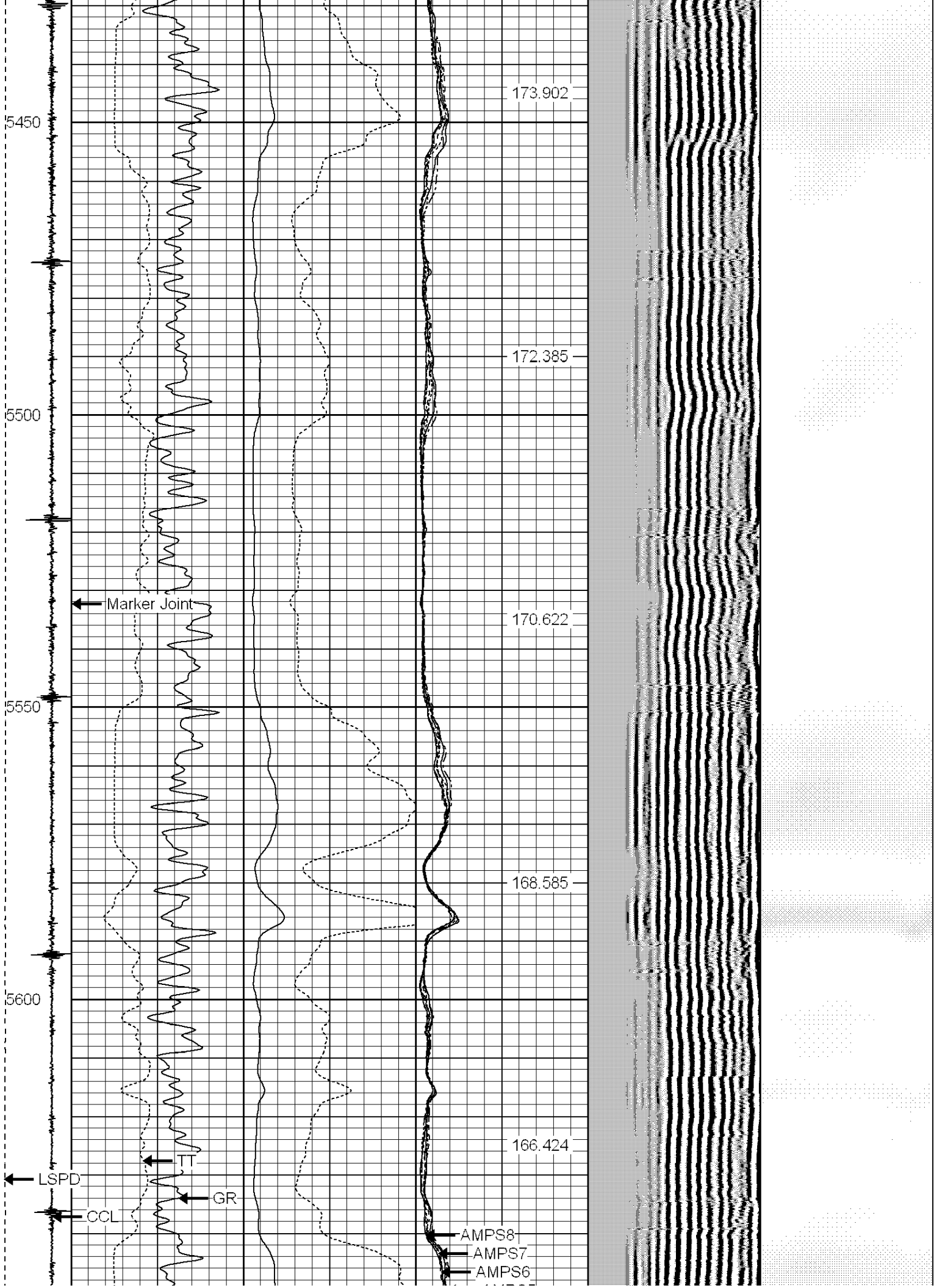
177.938

177.242

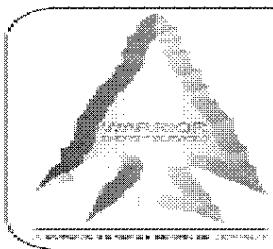
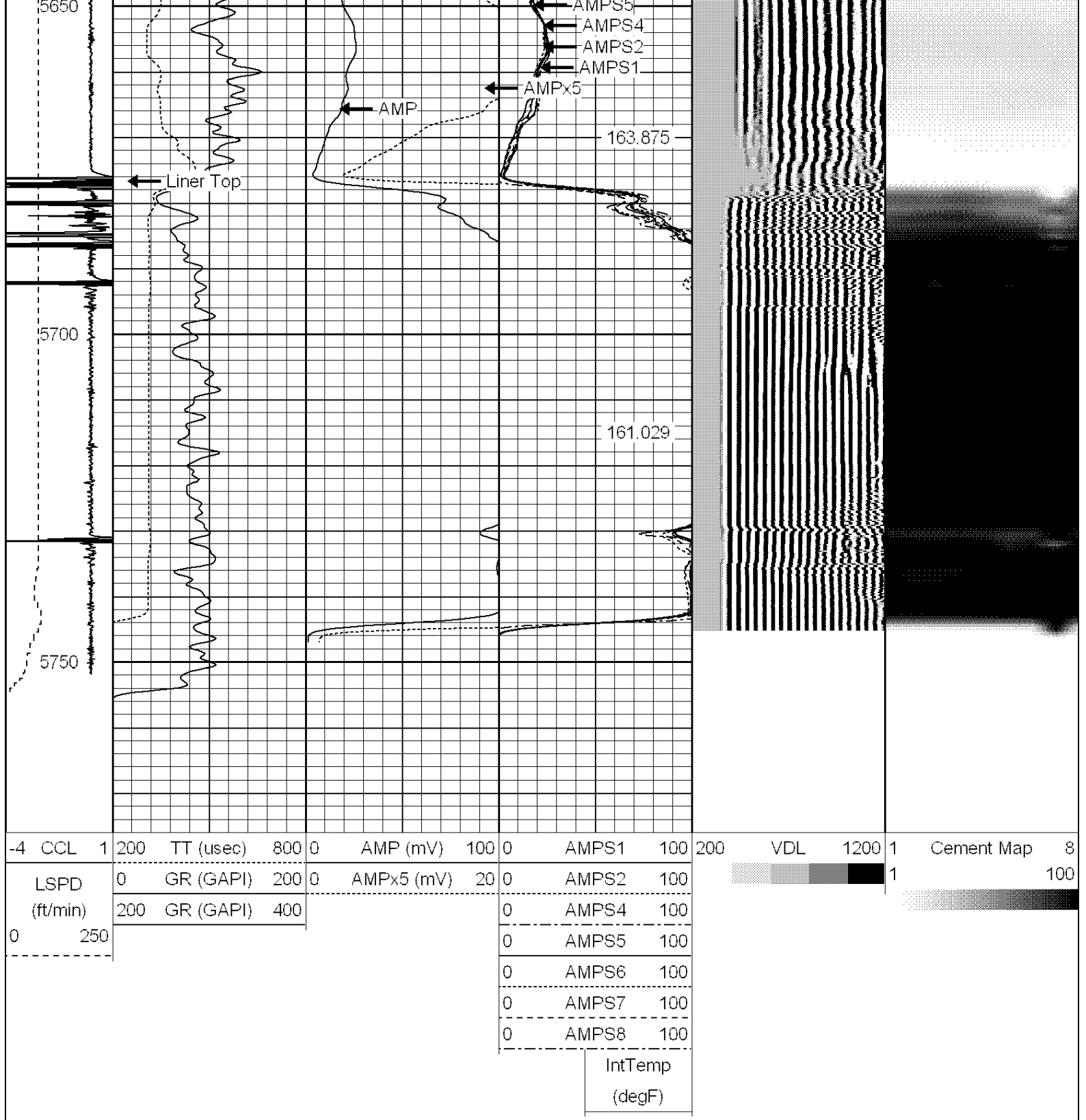
176.259

175.225









**WARRIOR**  
ENERGY SERVICES

Company Bill Barrett Corporation  
Well 70 Ranch 04-63-3225CH  
Field Wattenberg  
County Weld  
State Colorado