



Scale: 5" / 100'
Measured Depth Log

Well Name 70 Ranch 4-63-3-3225CH Horizontal

Location NWSW S3 T4N R63W

State COLORADO

Country USA

API Number 05-123-37921

Region DJ BASIN

Spud Date 1/4/2014

Surface Coordinates 2018' FSL, 234' FWL

Bottom Hole Coordinates 2630' FNL, 500' FEL

County WELD

Rig Number NABORS M37

AFE # 18530D

Field WATTENBERG

Drilling Completed 1/21/2014

Ground Elevation 4559'

K.B. Elevation 4582'

Logged Interval 4000' To 10990'

Total Depth 10990'

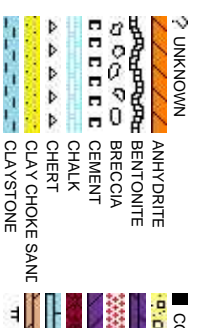
Formation NIOBRARA C CHALK

Type of Drilling Fluid H2O, LSND

Company BILL BARRETT
Address 1099 18TH ST.,
DENVER, CO 8

Name JOHN ROESIN
Company BILL BARRETT
Address 1099 18TH ST.,
DENVER, CO 8

WELLSITE GEOLOGISTS



Slide/Rotate

ROP
ROF
GAMMA

Bit #: 2
Type: HUGHES DP405
Size: 8.75
Depth In: 5,889'
Jets: 5x16
S/N: 7034914

Total Gas & Chromatograph

GAS
C1
C2
C3
C4

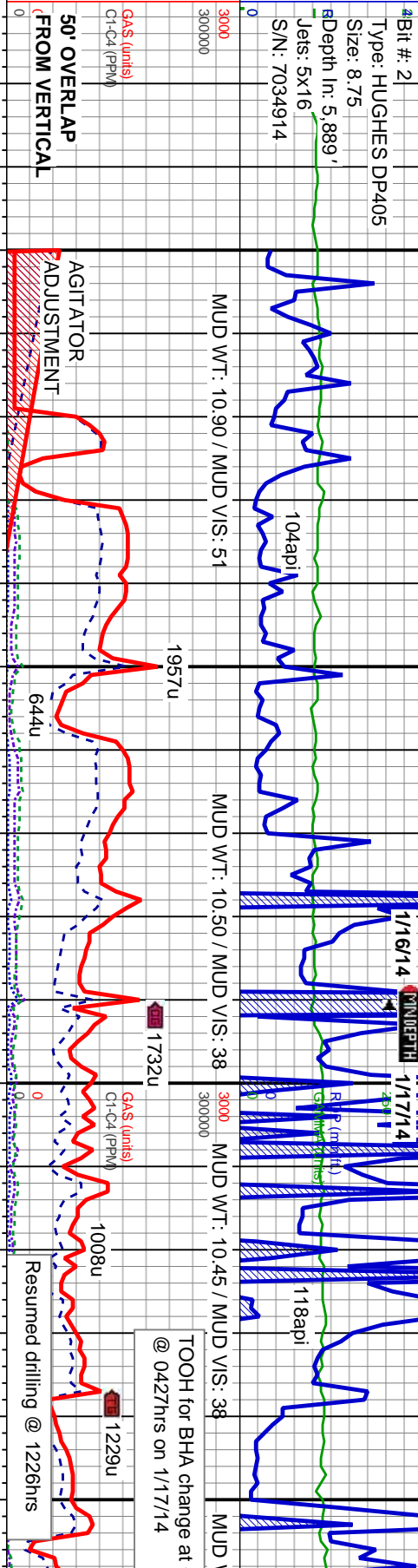
Depth Labels

% Lith

Well Bore
TVD

Oil Show

Images



REFER TO 70 RANCH
4-63-3-3225CH
VERTICAL FOR INC <2.6°

SHY SLTST: gy-dk gy, frm-hd, sb blk-y-sb ply, gr-rthy, occ
sd, non calc, arg cnt, grdg to tr shy ss, ss and silty sh

BEGIN 50' SAMPLE INTERVAL
SHY SLTST: gy-dk gy, frm-hd, sb blk-y-sb ply,
gr-rthy, occ sd, non calc, arg cnt, grdg to tr shy
ss, SLTY SH dk gy, sb ply, fts ip, vr-mic gr, non
calc

SHY SL
gr-rthy,
SLTY S

Columbine Logging
2-Manned Geosteering
Operational 1/15/2014
Bloodhound #314

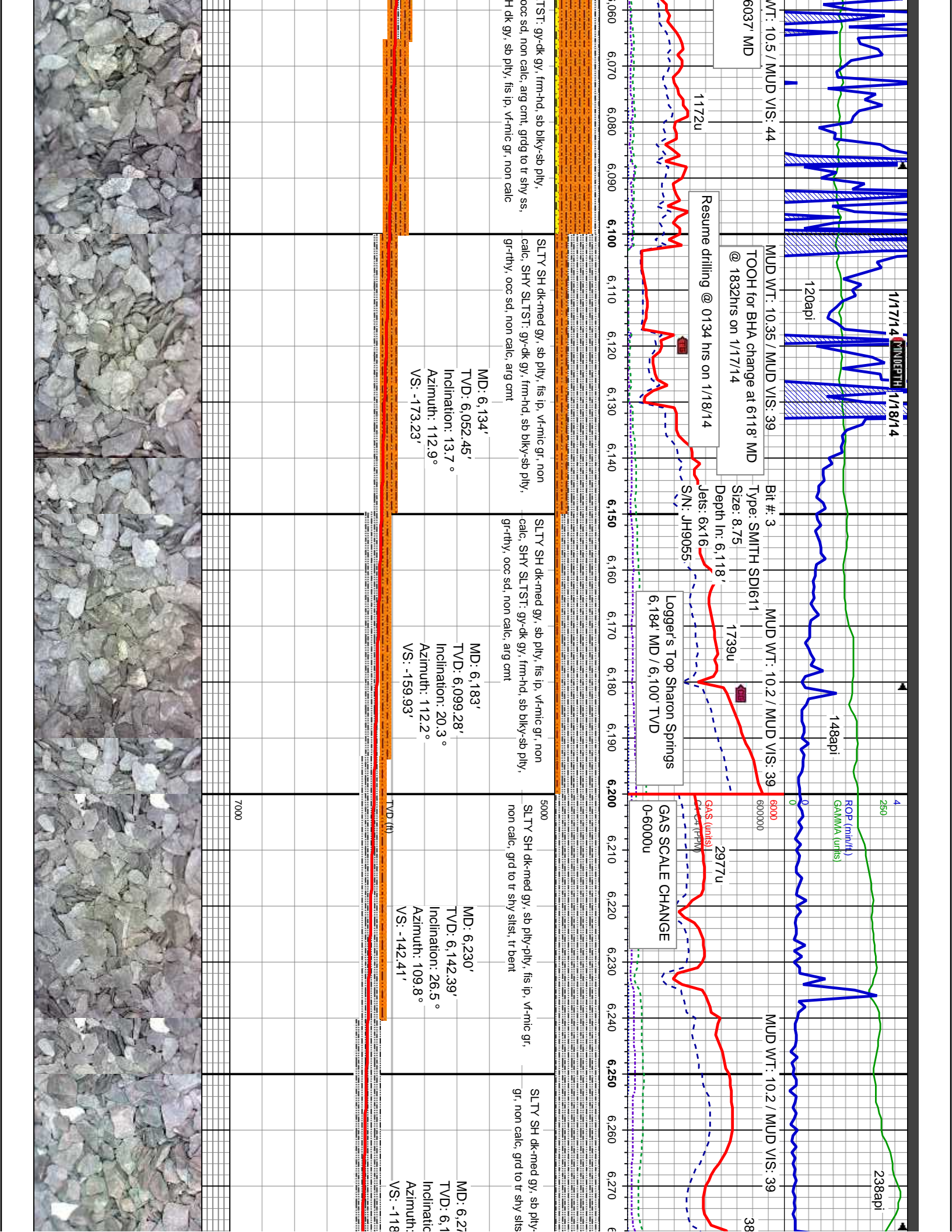
MD: 5,944'
TVD: 5,864.26'
Inclination: 2.6 °
Azimuth: 161.5°
VS: -193.5'

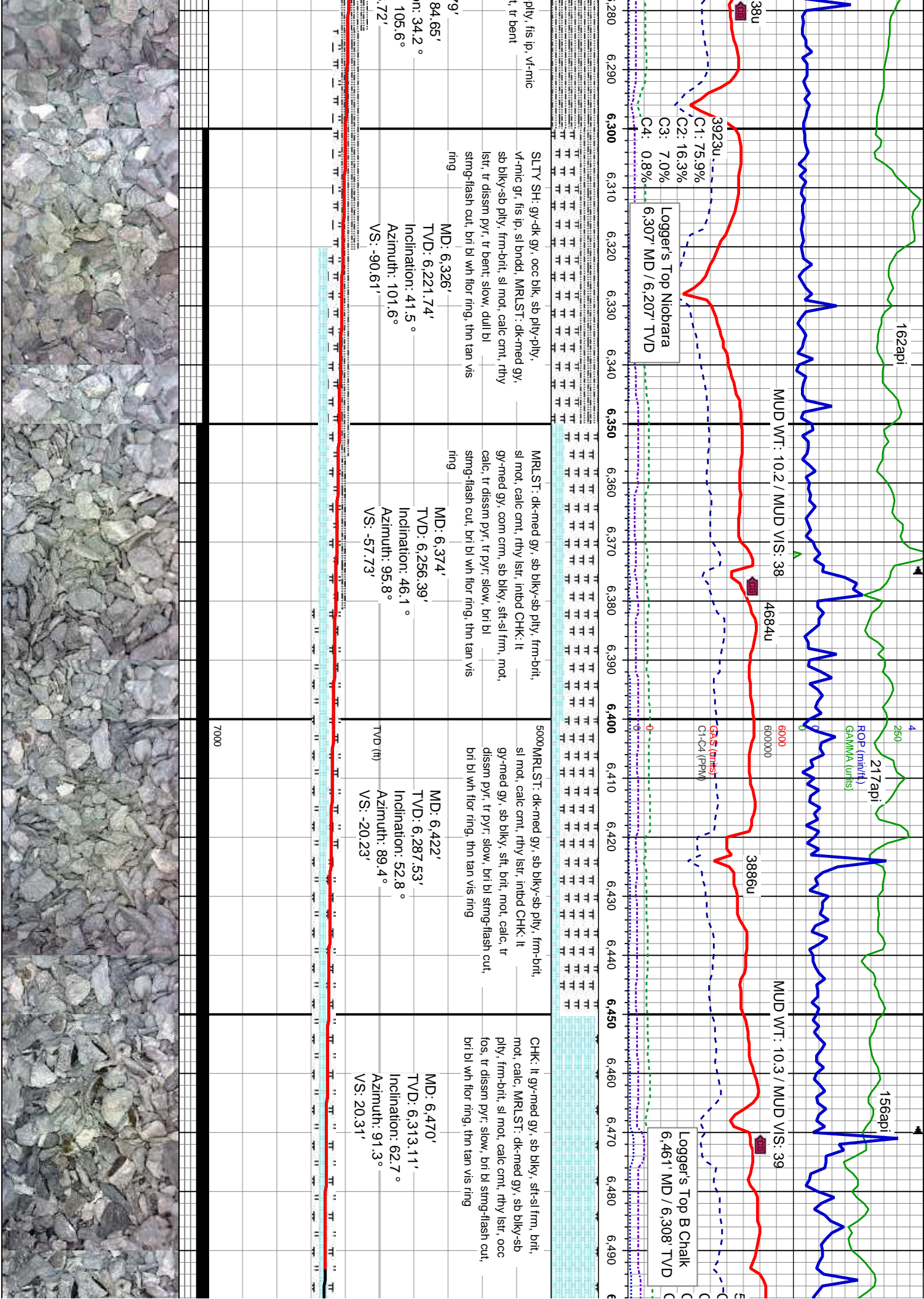
MD: 6,038'
TVD: 5,958.02'
Inclination: 6.7 °
Azimuth: 115.1°
VS: -188.89'

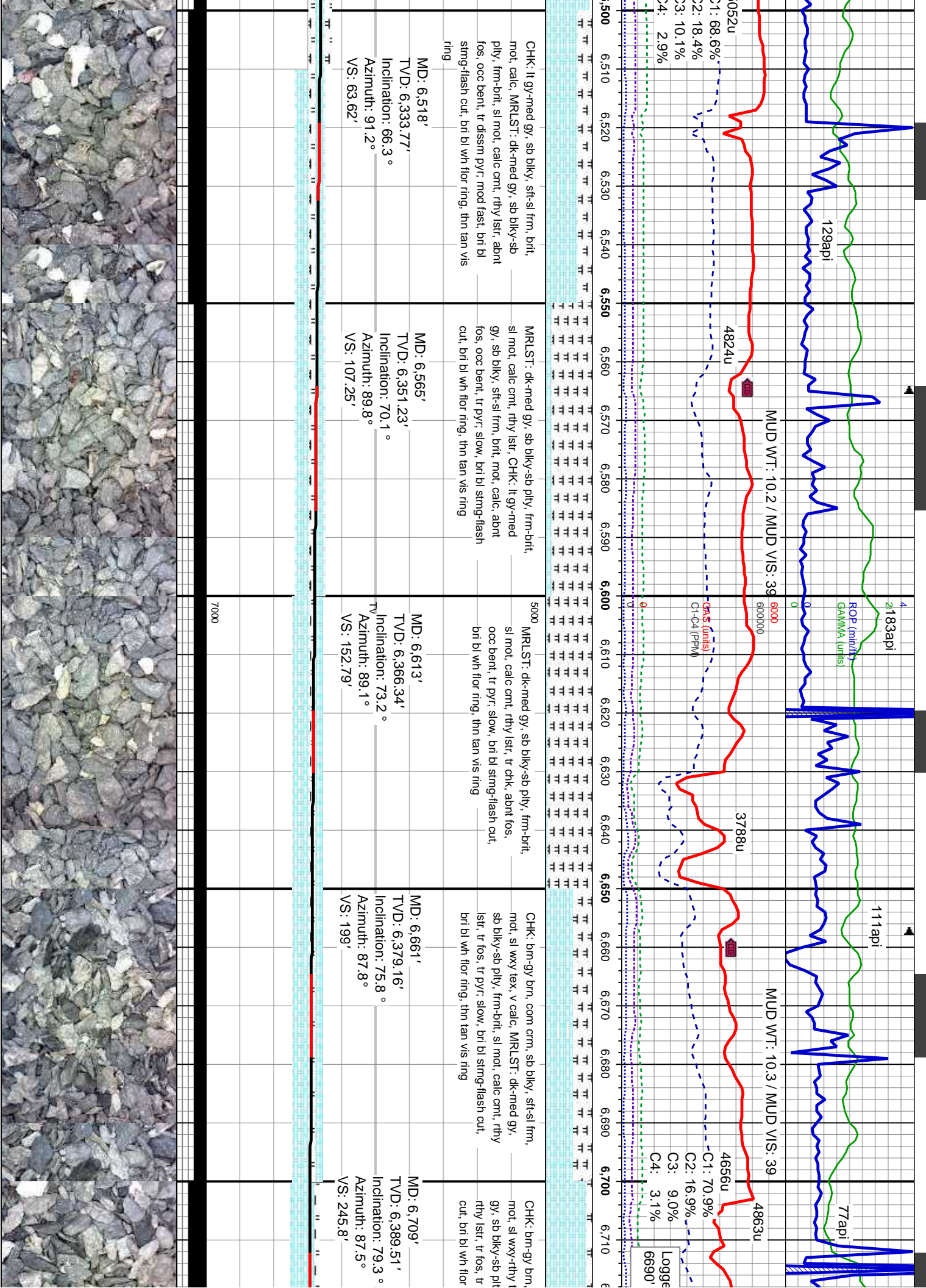
TVD (ft)

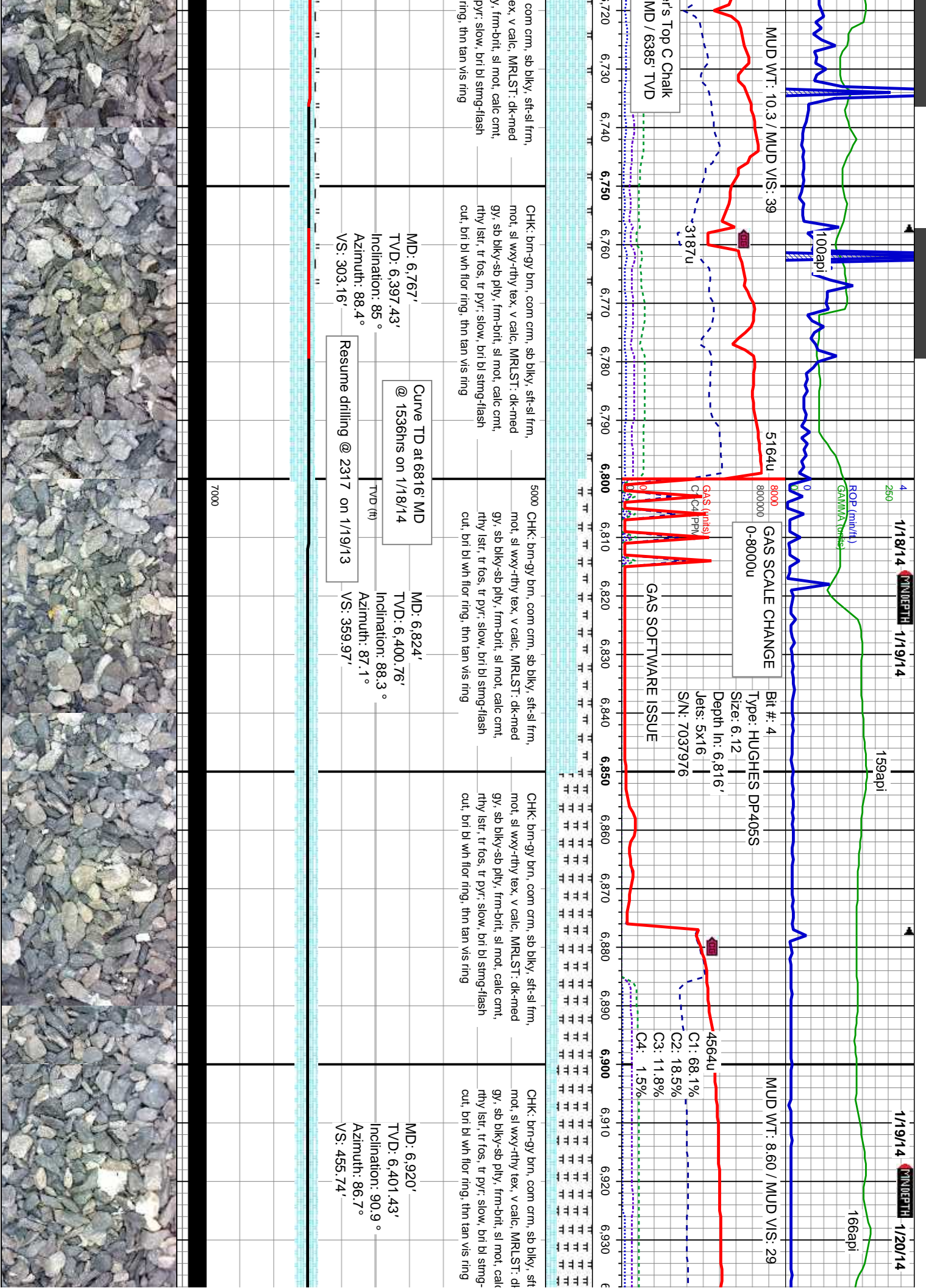
7000











1/18/14 MINDEPTH 1/19/14

1/19/14 MINDEPTH 1/20/14

MUD WT: 10.3 / MUD VIS: 39

MUD WT: 8.60 / MUD VIS: 29

GAS SCALE CHANGE
0-8000u

Top C Chalk
MD / 6385' TVD

Bit #: 4
Type: HUGHES DP405S
Size: 6.12
Depth In: 6,816'
Jets: 5x16
S/N: 7037976

GAS SOFTWARE ISSUE

C1: 68.1%
C2: 18.5%
C3: 11.8%
C4: 1.5%

com crm, sb blk, sft sl frm,
ex, v calc, MRLST: dk-med
y, frm-brt, sl mot, calc cnt,
pyr: slow, bri bl string-flash
ring, thn tan vis ring

CHK: brn-gy brn, com crm, sb blk, sft sl frm,
mot, sl wxy-rthy tex, v calc, MRLST: dk-med
gy, sb blk-sb ply, frm-brt, sl mot, calc cnt,
rthy lst, tr fos, tr pyr: slow, bri bl string-flash
cut, bri bl wh flor ring, thn tan vis ring

5000 CHK: brn-gy brn, com crm, sb blk, sft sl frm,
mot, sl wxy-rthy tex, v calc, MRLST: dk-med
gy, sb blk-sb ply, frm-brt, sl mot, calc cnt,
rthy lst, tr fos, tr pyr: slow, bri bl string-flash
cut, bri bl wh flor ring, thn tan vis ring

CHK: brn-gy brn, com crm, sb blk, sft sl frm,
mot, sl wxy-rthy tex, v calc, MRLST: dk-med
gy, sb blk-sb ply, frm-brt, sl mot, calc cnt,
rthy lst, tr fos, tr pyr: slow, bri bl string-flash
cut, bri bl wh flor ring, thn tan vis ring

CHK: brn-gy brn, com crm, sb blk, sft sl frm,
mot, sl wxy-rthy tex, v calc, MRLST: dk-med
gy, sb blk-sb ply, frm-brt, sl mot, calc cnt,
rthy lst, tr fos, tr pyr: slow, bri bl string-flash
cut, bri bl wh flor ring, thn tan vis ring

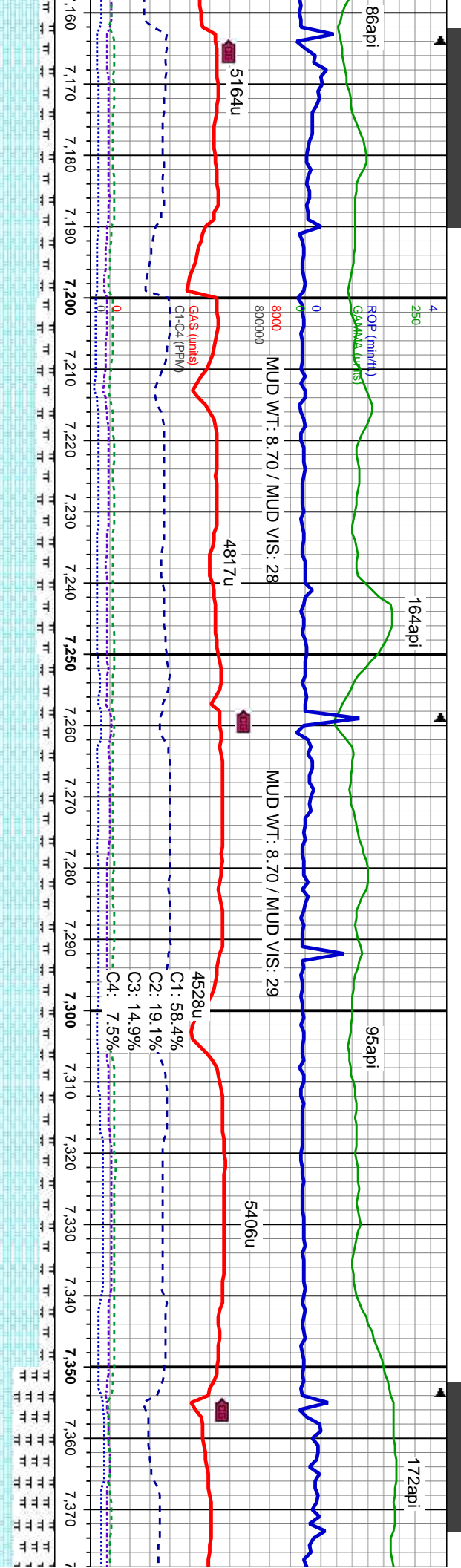
MD: 6,767'
TVD: 6,397.43'
Inclination: 85°
Azimuth: 88.4°
VS: 303.16'

Curve TD at 6816' MD
@ 1536hrs on 1/18/14

MD: 6,824'
TVD: 6,400.76'
Inclination: 88.3°
Azimuth: 87.1°
VS: 359.97'

MD: 6,920'
TVD: 6,401.43'
Inclination: 90.9°
Azimuth: 86.7°
VS: 455.74'

Resume drilling @ 2317 on 1/19/13



brn-gy brn, com crm, sb blk, sft-sl frm, sl wxy-rthy tex, v calc, MRLST: dk-med blk, sb blk, frm-brt, sl mot, calc cnt, str, tr fos, tr pyr, slow, bri bl sting-flash cut, bri bl wh flr ring, thn tan vis ring

5000

CHK: brn-gy brn, med gy, sb blk, sft-sl frm, mot, sl wxy-rthy tex, v calc, MRLST: dk-med gy, sb blk, frm-brt, sl mot, calc cnt, rthy lstr, tr fos, tr pyr, slow, bri bl sting-flash cut, bri bl wh flr ring, thn tan vis ring

CHK: brn-gy brn, med gy, sb blk, sft-sl frm, mot, sl wxy-rthy tex, v calc, MRLST: dk-med gy, sb blk, frm-brt, sl mot, calc cnt, rthy lstr, tr fos, tr pyr, slow, bri bl sting-flash cut, bri bl wh flr ring, thn tan vis ring

CHK: brn-gy brn, med gy, sb blk, sft-sl frm, mot, sl wxy-rthy tex, v calc, MRLST: dk-med gy, sb blk, frm-brt, sl mot, calc cnt, rthy lstr, tr fos, tr pyr, slow, bri bl sting-flash cut, bri bl wh flr ring, thn tan vis ring

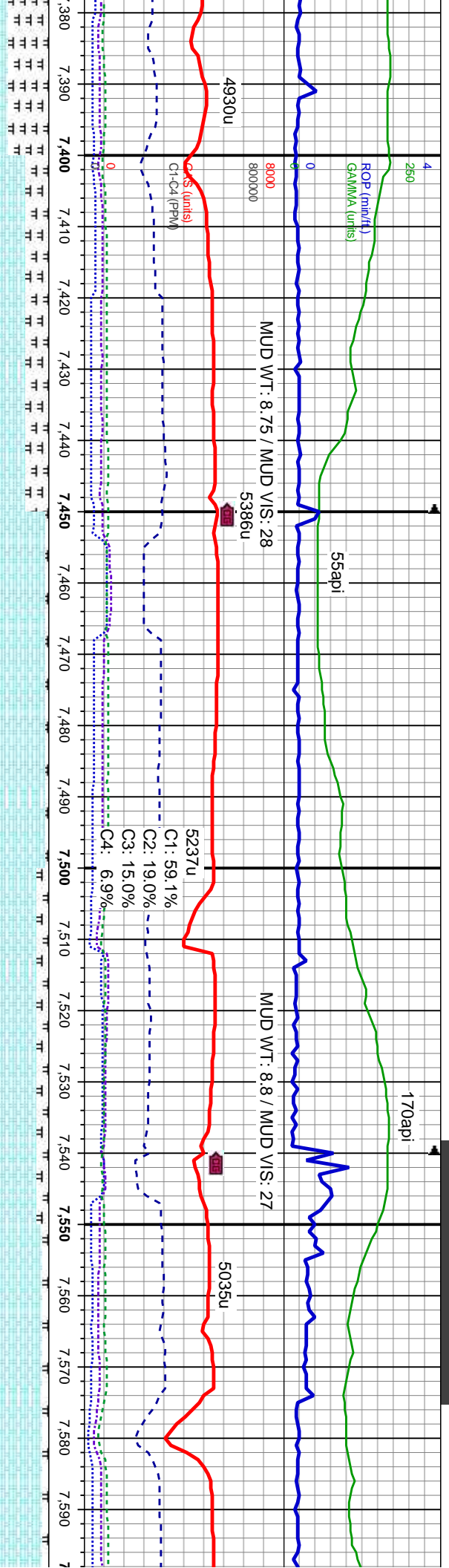
MRLST: dk-med gy, sb blk, sft-sl frm, mot, calc cnt, rthy lstr, C blk, sft-sl frm, mot, sl wxy-rthy lstr, tr fos, tr pyr, slow, bri bl sting-flash cut, bri bl wh flr ring, thn tan vis ring

MD: 7,206'
TVD: 6,392.37'
Inclination: 91.8°
Azimuth: 86.6°
VS: 740.91'

MD: 7,308'
TVD: 6,389.97'
Inclination: 90.9°
Azimuth: 87°
VS: 842.63'

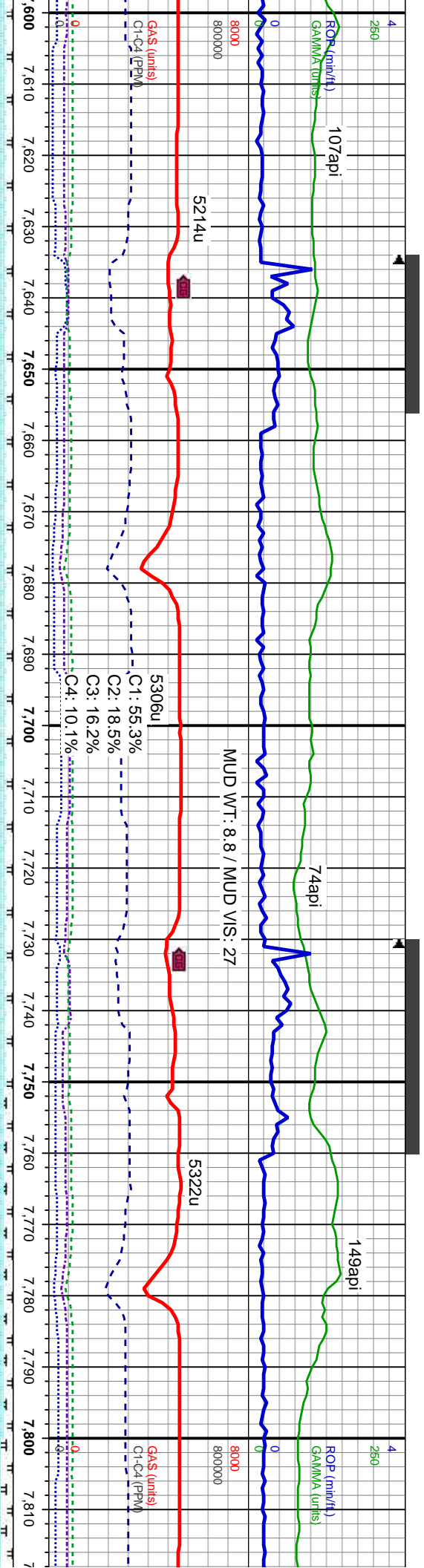
7000





-sb pily, frm-brit, HK: brn-gy brn, sb rthy tex, v calc, stmg-flash cut, bri	5000 CHK: brn, med gy-gy brn, sb biky, sft-sl frm, mot, sl wxy-rthy tex, v calc, MRLST: dk-med gy, sb biky-sb pily, frm-brit, sl mot, calc cnt, rthy lst, tr fos, tr pyr: fast, bri bl stmg-flash cut, bri bl wh flr ring, thn tan vis ring	CHK: brn, med gy-gy brn, sb biky, sft-sl frm, mot, sl wxy-rthy tex, v calc, intbd tr mrlst, tr fos, tr pyr: fast, bri bl stmg-flash cut, bri bl wh flr ring, thn tan vis ring	CHK: brn, med gy-gy brn, sb biky, sft-sl frm, mot, sl wxy-rthy tex, v calc, MRLST: dk-med gy, sb biky-sb pily, frm-brit, sl mot, calc cnt, rthy lst, tr fos, tr pyr: fast, bri bl stmg-flash cut, bri bl wh flr ring, thn tan vis ring	CHK: brn, med gy-gy brn, sb biky, sft-sl frm, mot, sl wxy-rthy tex, v calc, MRLST: dk-med gy, sb biky-sb pily, frm-brit, sl mot, calc cnt, rthy lst, tr fos, tr pyr: fast, bri bl stmg-flash cut, bri bl wh flr ring, thn tan vis ring
MD: 7,393' TVD: 6,390.59' Inclination: 88.5 ° Azimuth: 88° VS: 927.48'		MD: 7,488' TVD: 6,391.83' Inclination: 90 ° Azimuth: 87.9° VS: 1,022.36'		MD: 7,583' TVD: 6,393.4' Inclination: 88.1 ° Azimuth: 88.4° VS: 1,117.24'





500' CHK: brn, med gy-gy brn, sb blkly, sft-sl frm, mot, sl wxy-rthy tex, v calc, MRLST: dk-med gy, sb blkly-sb ply, frm-brt, sl mot, calc cnt, rthy lstr, tr fos, tr pyr, fast, bri bl string-flash cut, bri bl wh flr ring, thn tan vis ring

CHK: brn, med gy-gy brn, sb blkly, sft-sl frm, mot, sl wxy-rthy tex, v calc, MRLST: dk-med gy, sb blkly-sb ply, frm-brt, sl mot, calc cnt, rthy lstr, tr fos, tr pyr, fast, bri bl string-flash cut, bri bl wh flr ring, thn tan vis ring

CHK: gy brn-brn, sb blkly, sft-sl frm, mot, sl wxy-rthy tex, v calc, MRLST: dk-med gy, sb blkly-sb ply, frm-brt, sl mot, calc cnt, rthy lstr, tr fos, tr pyr, fast, bri bl string-flash cut, bri bl wh flr ring, thn tan vis ring

CHK: gy brn-brn, sb blkly, sft-sl frm, mot, sl wxy-rthy tex, v calc, MRLST: dk-med gy, sb blkly-sb ply, frm-brt, sl mot, calc cnt, rthy lstr, tr fos, tr pyr, fast, bri bl string-flash cut, bri bl wh flr ring, thn tan vis ring

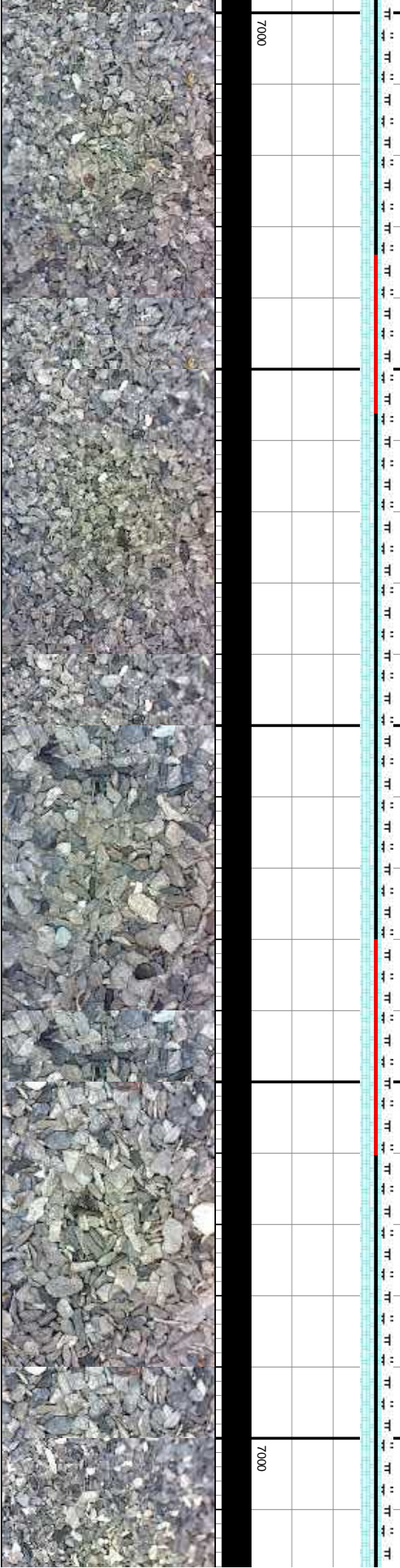
500' CHK: gy brn, me mot, sl wxy-rthy gy, sb blkly-sb ply lstr, tr fos, tr cut, bri bl wh flr

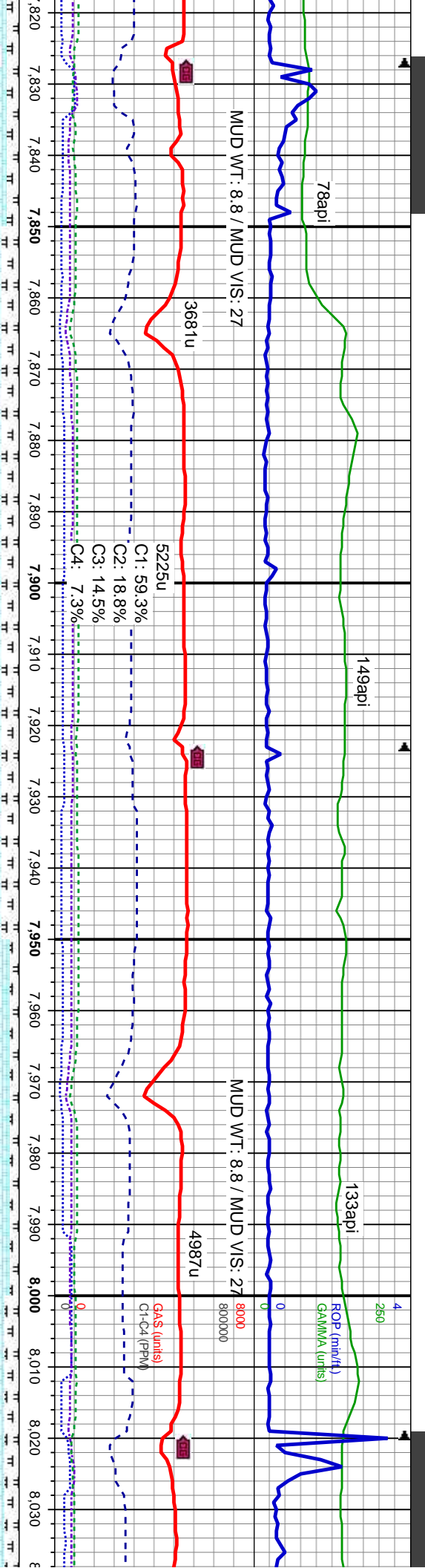
TVD (ft)

MD: 7,679'
TVD: 6,395.75'
Inclination: 89.1°
Azimuth: 90.2°
VS: 1,213.17'

MD: 7,776'
TVD: 6,396.68'
Inclination: 89.8°
Azimuth: 92°
VS: 1,310.16'

TVD (ft)





d gy - brn, sb blk, sft-si frm, mot, sl wxy-rthy tex, v calc, MRLST: dk-med gy, sb blk-sb ply, frm-brt, sl mot, calc cnt, rthy lstr, tr fos, tr pyr: fast, bri bl stmg-flash cut, bri bl wh flr ring, thn tan vis ring

CHK: gy brn, med gy - brn, sb blk, sft-si frm, mot, sl wxy-rthy tex, v calc, MRLST: dk-med gy, sb blk-sb ply, frm-brt, sl mot, calc cnt, rthy lstr, tr fos, tr pyr: fast, bri bl stmg-flash cut, bri bl wh flr ring, thn tan vis ring

CHK: gy brn-brn, med gy, sb blk, sft-si frm, mot, sl wxy-rthy tex, v calc, MRLST: dk-med gy, sb blk-sb ply, frm-brt, sl mot, calc cnt, rthy lstr, tr fos, tr pyr: fast, bri bl stmg-flash cut, bri bl wh flr ring, thn tan vis ring

CHK: gy brn-brn, med gy, sb blk, sft-si frm, mot, sl wxy-rthy tex, v calc, MRLST: dk-med gy, sb blk-sb ply, frm-brt, sl mot, calc cnt, rthy lstr, tr fos, tr pyr: fast, bri bl stmg-flash cut, bri bl wh flr ring, thn tan vis ring

5000 CHK: gy brn-brn, med gy, sb blk, sft-si frm, mot, sl wxy-rthy tex, v calc, MRLST: dk-med gy, sb blk-sb ply, frm-brt, sl mot, calc cnt, rthy lstr, tr fos, tr pyr: fast, bri bl stmg-flash cut, bri bl wh flr ring, thn tan vis ring

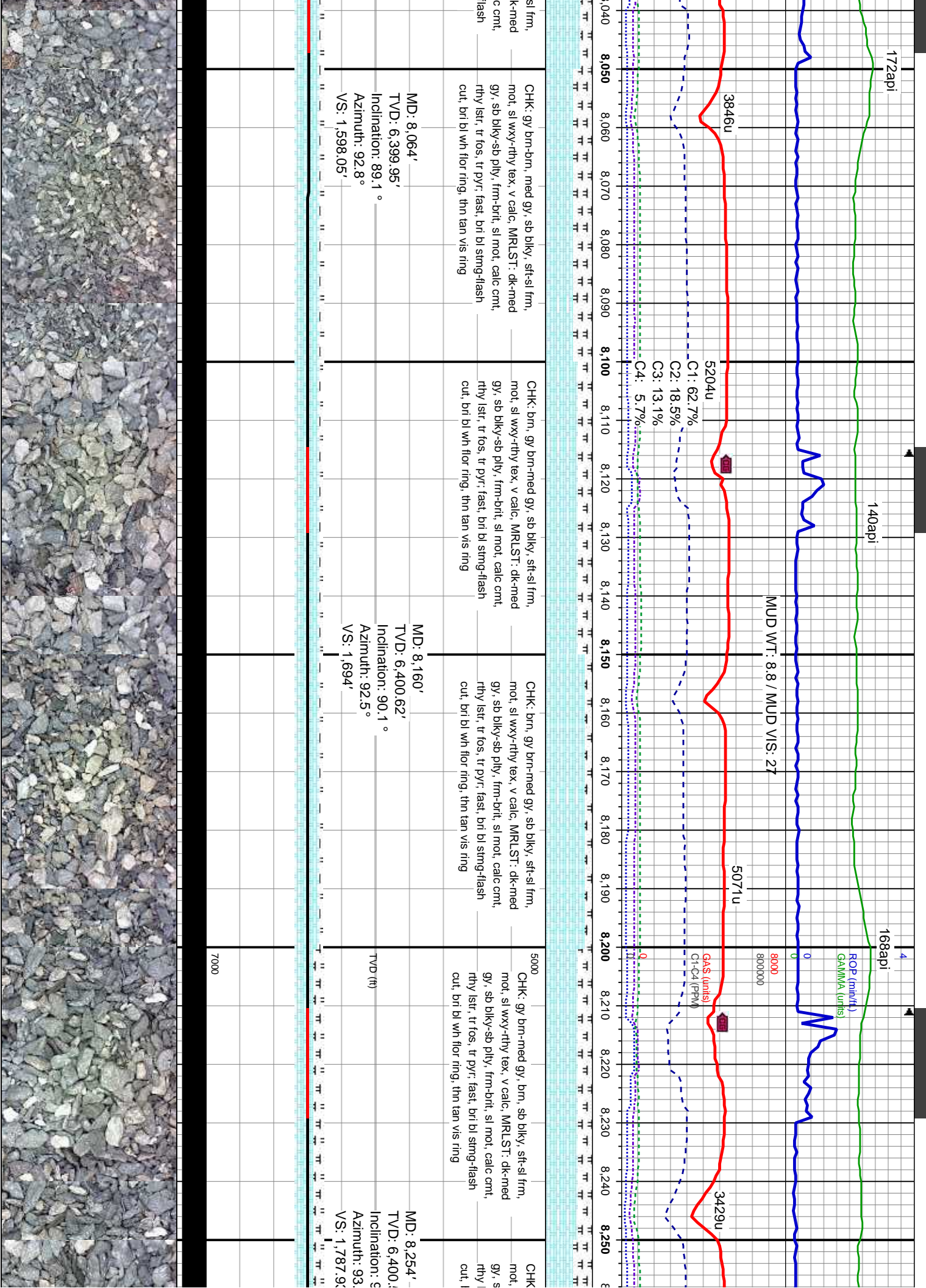
MD: 7,872'
TVD: 6,398.19'
Inclination: 88.4°
Azimuth: 92.3°
VS: 1,406.12'

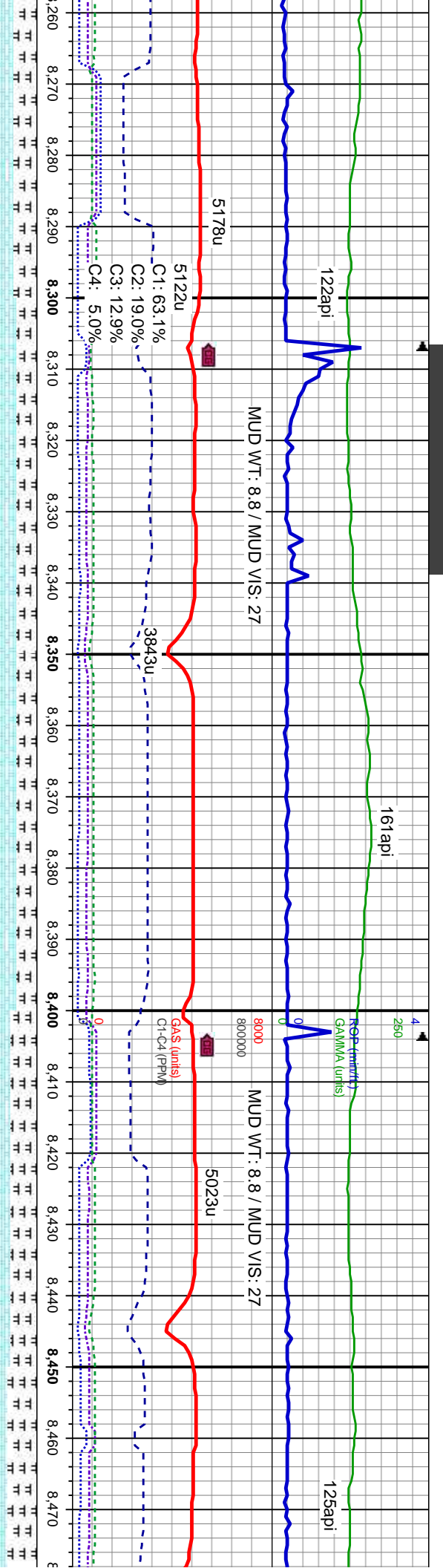
MD: 7,968'
TVD: 6,399.36'
Inclination: 90.2°
Azimuth: 91.7°
VS: 1,502.09'

TVD (ft)

7000

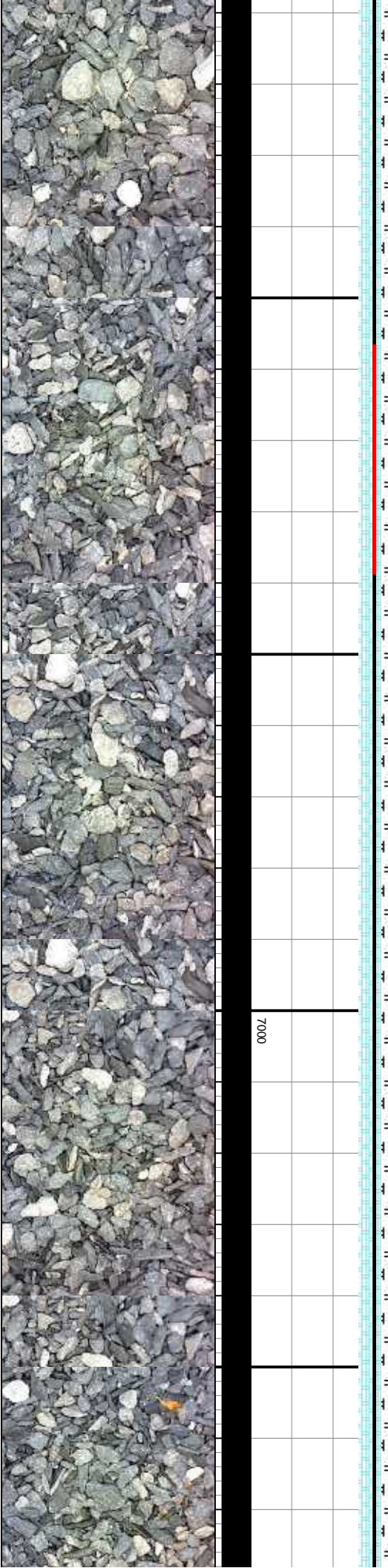


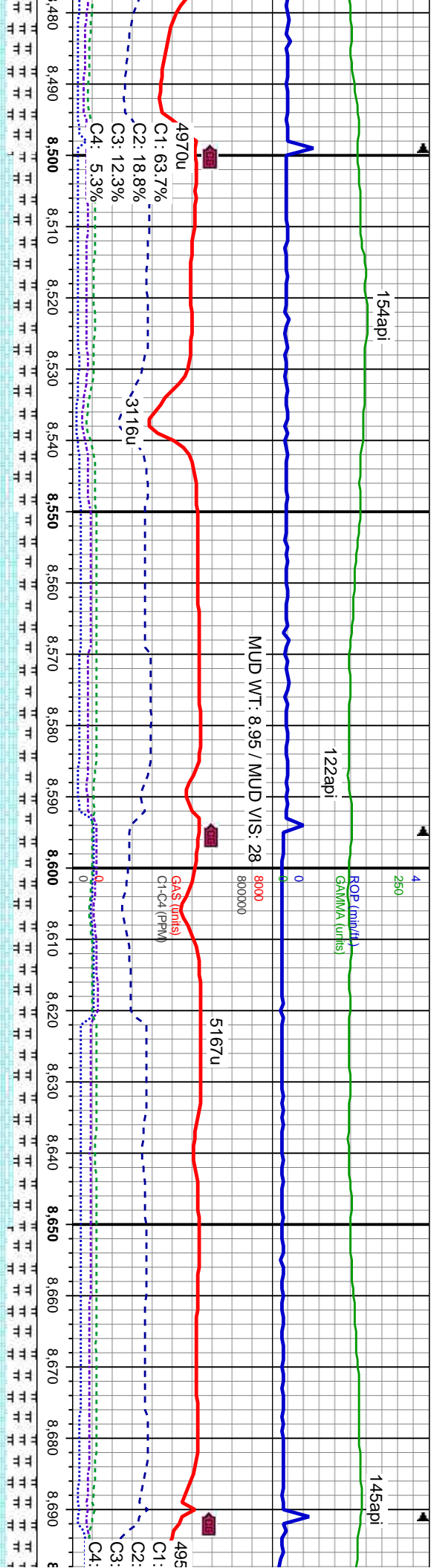




gy brn-med gy, brn, sb blk, sft-sl frm, sl wxy-rthy tex, v calc, MRLST: dk-med b blk, sb ply, frm-brt, sl mot, calc cnt, str, tr fos, tr pyr, fast, bri bl stmg-flash cut, bri bl wh flr ring, thn tan vis ring	CHK: gy brn-med gy, brn, sb blk, sft-sl frm, mot, sl wxy-rthy tex, v calc, MRLST: dk-med gy, sb blk, sb ply, frm-brt, sl mot, calc cnt, rthy lstr, com fos, tr pyr, fast, bri bl stmg-flash cut, bri bl wh flr ring, thn tan vis ring	CHK: gy brn-med gy, brn, sb blk, sft-sl frm, mot, sl wxy-rthy tex, v calc, MRLST: dk-med gy, sb blk, sb ply, frm-brt, sl mot, calc cnt, rthy lstr, com fos, tr pyr, fast, bri bl stmg-flash cut, bri bl wh flr ring, thn tan vis ring	5000 CHK: gy brn-med gy, brn, sb blk, sft-sl frm, mot, sl wxy-rthy tex, v calc, MRLST: dk-med gy, sb blk, sb ply, frm-brt, sl mot, calc cnt, rthy lstr, tr fos, tr pyr, med fast, bri bl stmg-flash cut, bri bl wh flr ring, thn tan vis ring	CHK: gy brn-med gy, brn, sb blk, sft-sl frm, mot, sl wxy-rthy tex, v calc, MRLST: dk-med gy, sb blk, sb ply, frm-brt, sl mot, calc cnt, rthy lstr, tr fos, tr pyr, med fast, bri bl wh flr ring, thn tan vis ring
---	---	---	--	---

MD: 8,351' TVD: 6,401.04' Inclination: 89.4° Azimuth: 90.1° VS: 1,884.91'	MD: 8,446' TVD: 6,401.54' Inclination: 90° Azimuth: 90.4° VS: 1,979.9'
---	--





CHK: gy brn-med gy, brn, some crm, sb blk, sft-sf frm, mot, sl wxy-rthy tex, v calc, MRLST: dk-med gy, sb blk-sb pily, frm-brt, v sl mot, calc cnt, rthy lstr, tr fos, tr pyr, fast, brt bl stmg-flash cut, brt bl wh flor ring, thn tan vis ring

CHK: gy brn-med gy, brn, some crm, sb blk, sft-sf frm, mot, sl wxy-rthy tex, v calc, MRLST: dk-med gy, sb blk-sb pily, frm-brt, v sl mot, calc cnt, rthy lstr, tr fos, tr pyr, fast, brt bl stmg-flash cut, brt bl wh flor ring, thn tan vis ring

CHK: brn, gy brn-med gy, sb blk, sft-sf frm, mot, sl wxy-rthy tex, v calc, MRLST: dk-med gy, sb blk-sb pily, frm-brt, v sl mot, calc cnt, rthy lstr, tr fos, tr pyr, fast, brt bl stmg-flash cut, brt bl wh flor ring, thn tan vis ring

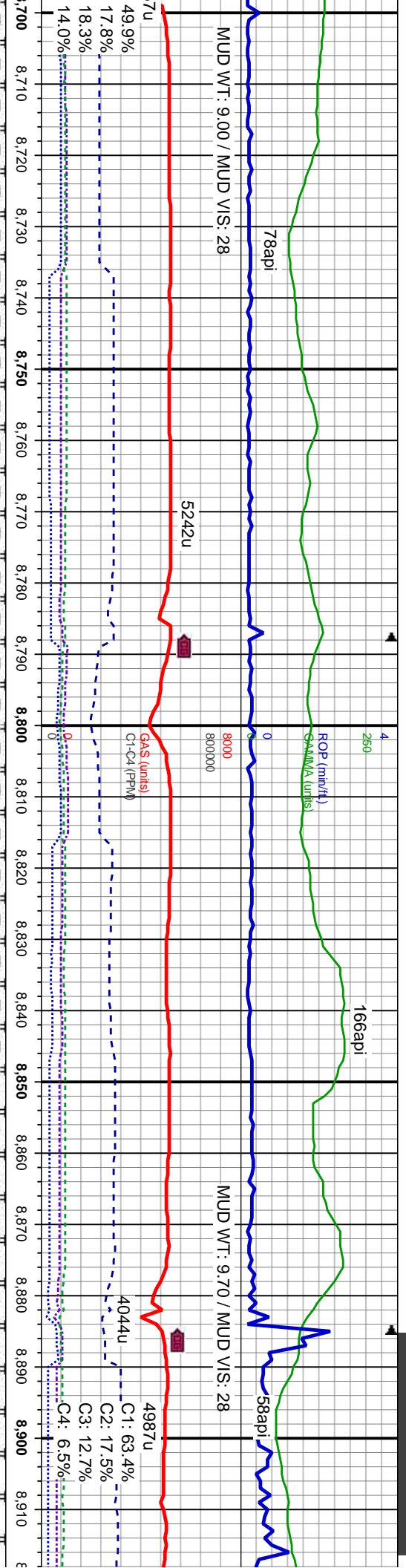
CHK: brn, gy brn-med gy, sb blk, sft-sf frm, mot, sl wxy-rthy tex, v calc, MRLST: dk-med gy, sb blk-sb pily, frm-brt, v sl mot, calc cnt, rthy lstr, tr fos, tr pyr, fast, brt bl stmg-flash cut, brt bl wh flor ring, thn tan vis ring

MD: 8,542'
TVD: 6,401.37'
Inclination: 90.2°
Azimuth: 90.9°
VS: 2,075.9'

MD: 8,638'
TVD: 6,401.54'
Inclination: 89.6°
Azimuth: 88.7°
VS: 2,171.88'

7000





CHK: brn, gy brn-med gy, sb blk, sft-sl frm, mot, sl wxy-rthy tex, v calc, MRLST: dk-med gy, sb blk, sb blk, frm-brt, v sl mot, calc cnt, rthy lstr, tr fos, tr pyr: fast, bri bl stmg-flash cut, bri bl wh flr ring, thn tan vis ring

CHK: brn, gy brn-med gy, sb blk, sft-sl frm, mot, sl wxy-rthy tex, v calc, MRLST: dk-med gy, sb blk, sb blk, frm-brt, v sl mot, calc cnt, rthy lstr, tr fos, tr pyr: fast, bri bl stmg-flash cut, bri bl wh flr ring, thn tan vis ring

5000
CHK: crm, brn, some gy brn-med gy, sb blk, sft-sl frm, mot, sl wxy-rthy tex, v calc, MRLST: dk-med gy, sb blk, sb blk, frm-brt, v sl mot, calc cnt, rthy lstr, tr fos, tr pyr: fast, bri bl stmg-flash cut, bri bl wh flr ring, thn tan vis ring

CHK: crm, brn, some gy brn-med gy, sb blk, sft-sl frm, mot, sl wxy-rthy tex, v calc, MRLST: dk-med gy, sb blk, sb blk, frm-brt, v sl mot, calc cnt, rthy lstr, tr fos, tr pyr: fast, bri bl stmg-flash cut, bri bl wh flr ring, thn tan vis ring

CHK: crm, brn, some gy brn-med gy, sb blk, sft-sl frm, mot, sl wxy-rthy tex, v calc, MRLST: dk-med gy, sb blk, sb blk, frm-brt, v sl mot, calc cnt, rthy lstr, tr fos, tr pyr: fast, bri bl stmg-flash cut, bri bl wh flr ring, thn tan vis ring

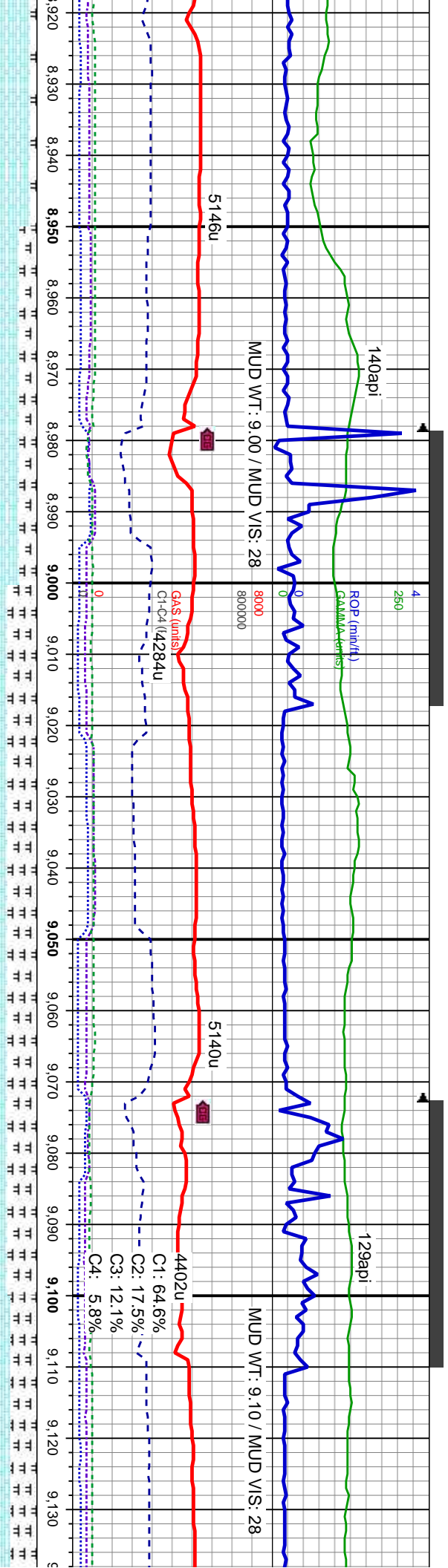
MD: 8,735'
TVD: 6,401.2'
Inclination: 90.8 °
Azimuth: 88.3 °
VS: 2,268.8'

MD: 8,830'
TVD: 6,397.97'
Inclination: 93.1 °
Azimuth: 88.1 °
VS: 2,363.64'

MD: 8,830'
TVD: 6,397.97'
Inclination: 93.1 °
Azimuth: 88.1 °
VS: 2,363.64'

7000





gy brn-med gy, sb blk, wxy-rthy tex, v calc, MRLST: y-sb pily, frm-brt, v sl mot, calc s, tr pyr: fast, bri bl sting-flash cut, bri bl wh flor ring, thin tan vis ring

CHK: brn, gy brn-med gy, some crm, sb blk, sft-sl frm, mot, sl wxy-rthy tex, v calc, MRLST: dk-med gy, sb blk-sb pily, frm-brt, v sl mot, calc cnt, rthy lstr, tr fos, tr pyr: fast, bri bl sting-flash cut, bri bl wh flor ring, thin tan vis ring

CHK: brn, some gy brn-med gy, some crm, blk, sft-sl frm, mot, sl wxy-rthy tex, v calc, MRLST: dk-med gy, sb blk-sb pily, frm-brt, v sl mot, calc cnt, rthy lstr, tr fos, tr pyr: fast, bri bl sting-flash cut, bri bl wh flor ring, thin tan vis ring

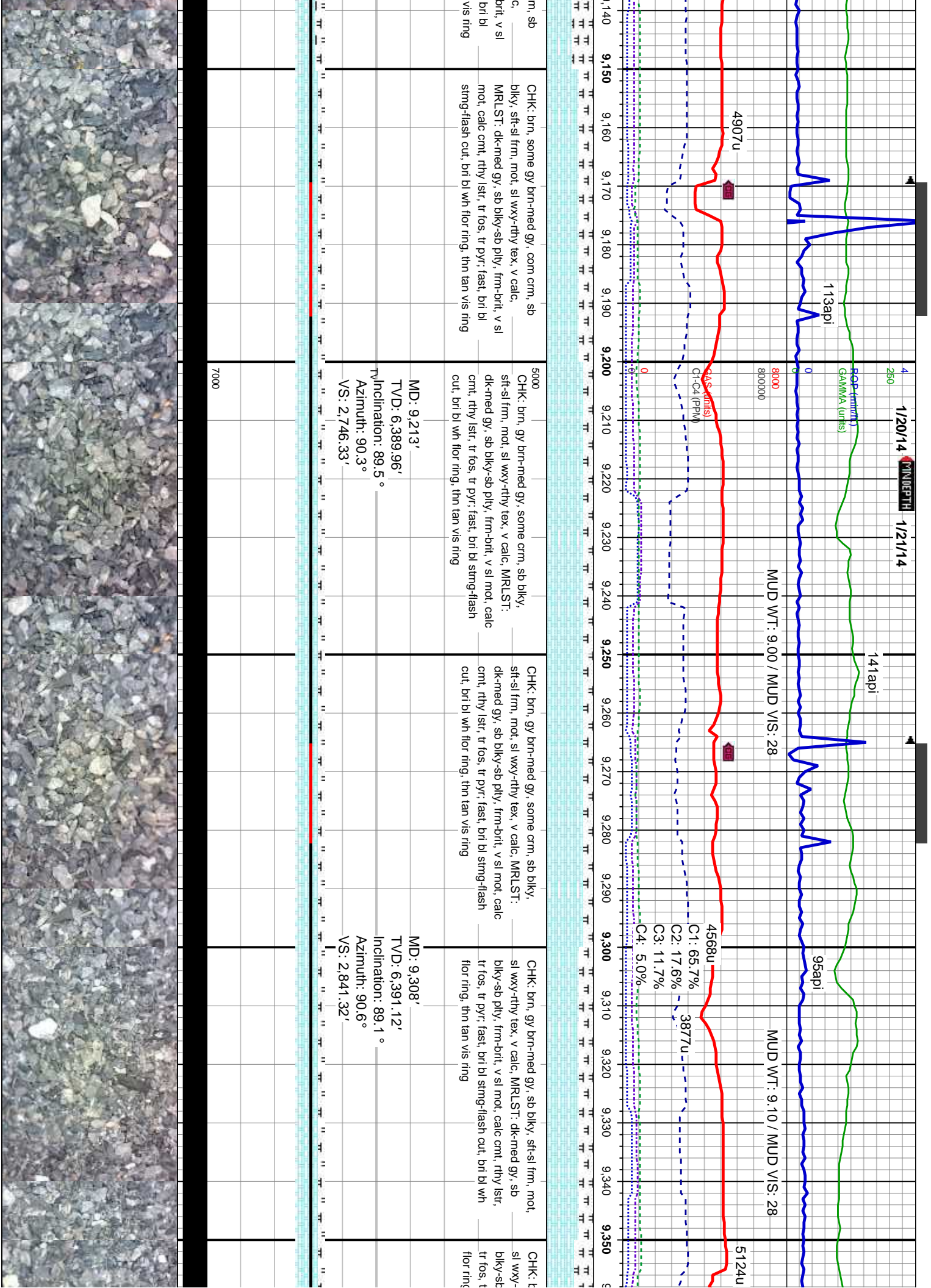
CHK: brn, some gy brn-med gy, some cr blk, sft-sl frm, mot, sl wxy-rthy tex, v cal MRLST: dk-med gy, sb blk-sb pily, frm- mot, calc cnt, rthy lstr, tr fos, tr pyr: fast, sting-flash cut, bri bl wh flor ring, thin tan

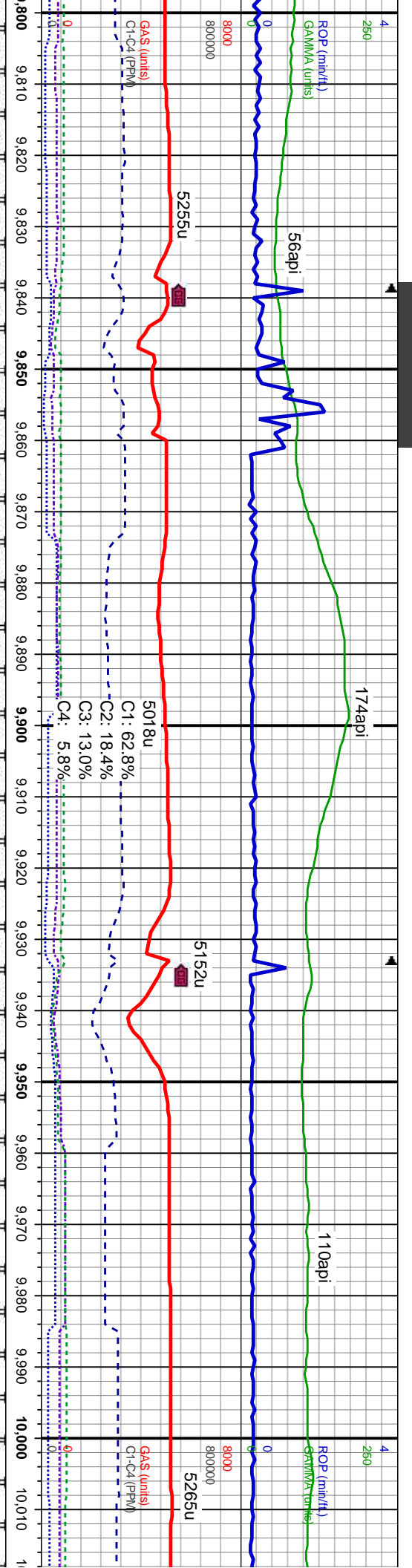
D: 8,926'
D: 6,393.62'
Inclination: 92.1°
Azimuth: 88.8°
S: 2,459.46'

MD: 9,021'
TVD: 6,390.47'
Inclination: 91.7°
Azimuth: 89.6°
VS: 2,554.37'

MD: 9,117'
TVD: 6,389.29'
Inclination: 89.7°
Azimuth: 89.9°
VS: 2,650.34'







5CHK: brn- lt brn, gy brn-med gy, sb blkly, sft-sl frm, mot, sl wxy-rthy tex, v calc, MRLST: dk-med gy, sb blkly-sb ply, frm-brt, v sl mot, calc cmt, rthy lstr, tr fos, tr pyr: fast, bri bl string-flash cut, bri bl wh flor ring, thn tan vis ring

CHK: brn-gy brn, occ lt brn, sb blkly, sft-sl frm, mot, sl wxy-rthy tex, v calc, MRLST: dk-med gy, sb blkly-sb ply, frm-brt, v sl mot, calc cmt, rthy lstr, tr fos, tr pyr: fast, bri bl string-flash cut, bri bl wh flor ring, thn tan vis ring

CHK: brn-gy brn, occ lt brn, sb blkly, sft-sl frm, mot, sl wxy-rthy tex, v calc, MRLST: dk-med gy, sb blkly-sb ply, frm-brt, v sl mot, calc cmt, rthy lstr, tr fos, tr pyr: fast, bri bl string-flash cut, bri bl wh flor ring, thn tan vis ring

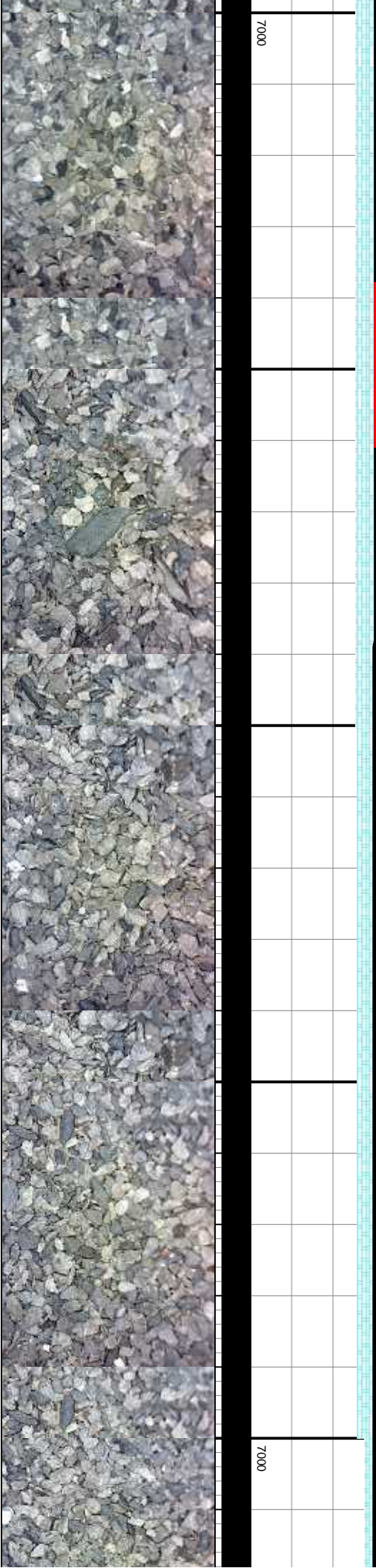
CHK: brn-gy brn, occ lt brn, sb blkly, sft-sl frm, mot, sl wxy-rthy tex, v calc, MRLST: dk-med gy, sb blkly-sb ply, frm-brt, v sl mot, calc cmt, rthy lstr, tr fos, tr pyr: fast, bri bl string-flash cut, bri bl wh flor ring, thn tan vis ring

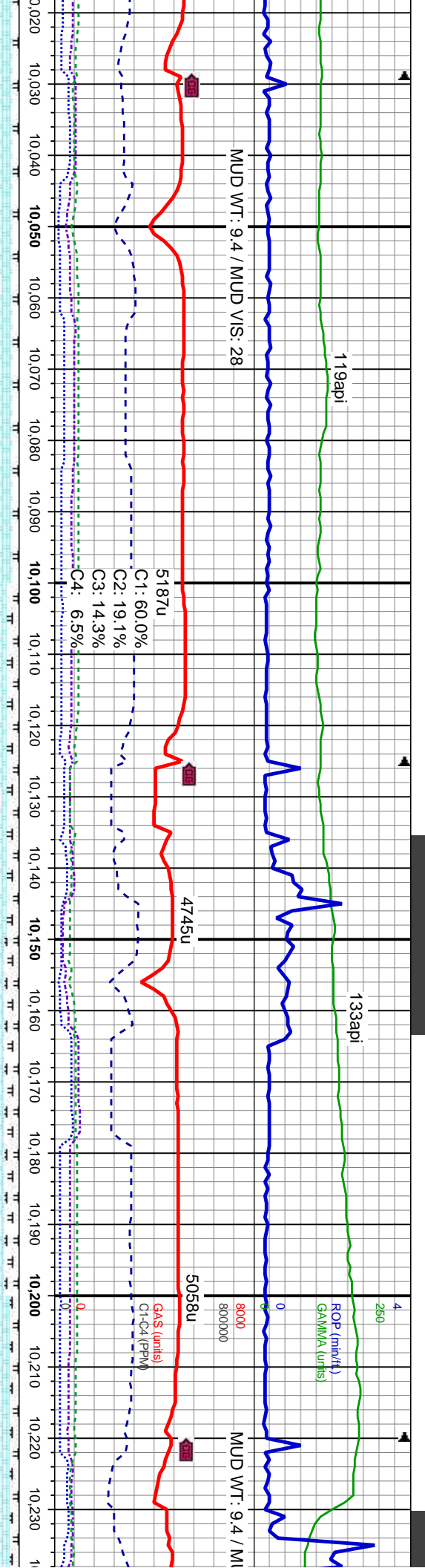
500CHK: brn-gy brn mot, sl wxy-rthy sb blkly-sb ply, f lstr, tr fos, tr pyr: wh flor ring, thn t

TVD (ft)

MD: 9,882'
TVD: 6,399.86'
Inclination: 88.2 °
Azimuth: 92.7 °
VS: 3,415.13'

MD: 9,978'
TVD: 6,401.87'
Inclination: 89.4 °
Azimuth: 92.5 °
VS: 3,511.05'





occ lt brn, sb blk, sft-sl frm, mot, sl wxy-rthy tex, v calc, MRLST: dk-med gy, frm-brt, v sl mot, calc cmt, rthy fast, brt bl string-flash cut, brt bl an vis ring

CHK: brn-gy brn, occ lt brn, sb blk, sft-sl frm, mot, sl wxy-rthy tex, v calc, MRLST: dk-med gy, sb blk-sb ply, frm-brt, v sl mot, calc cmt, rthy lstr, tr fos, tr pyr, fast, brt bl string-flash cut, brt bl wh flor ring, thn tan vis ring

CHK: gy brn-brn, occ med gy, sb blk, sft-sl frm, mot, sl wxy-rthy tex, v calc, MRLST: dk-med gy, sb blk-sb ply, frm-brt, v sl mot, calc cmt, rthy lstr, com fos, fast, brt bl string-flash cut, brt bl wh flor ring, thn tan vis ring

5⁶CHK: gy brn-brn, occ lt brn, sb blk, sft-s mot, sl wxy-rthy tex, v calc, MRLST: dk-r sb blk-sb ply, frm-brt, v sl mot, calc cr lstr, com fos, mod fast, brt bl string-flash bl wh flor ring, thn tan vis ring

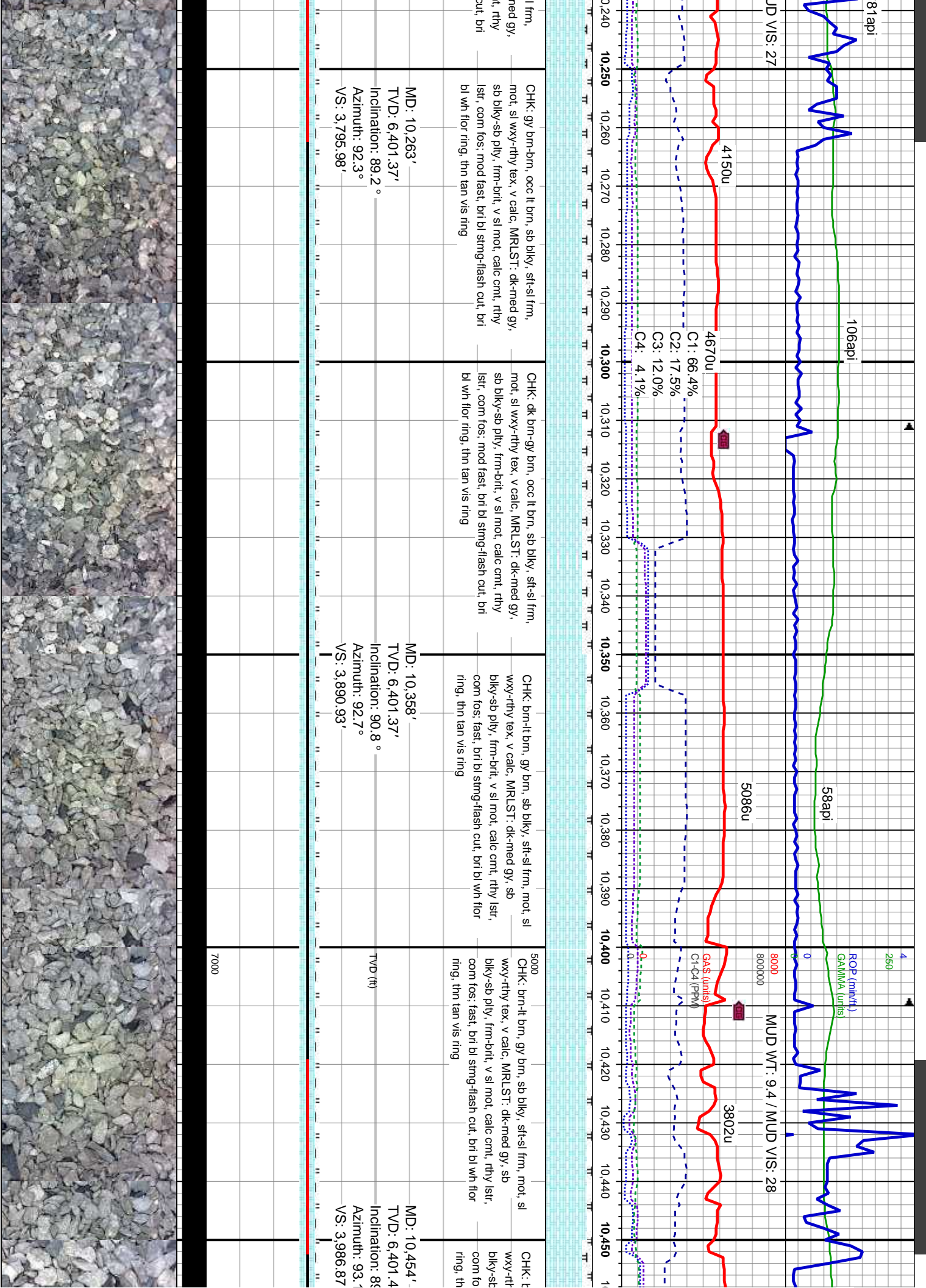
MD: 10,074'
TVD: 6,401.87'
Inclination: 90.6°
Azimuth: 91.9°
VS: 3,607.02'

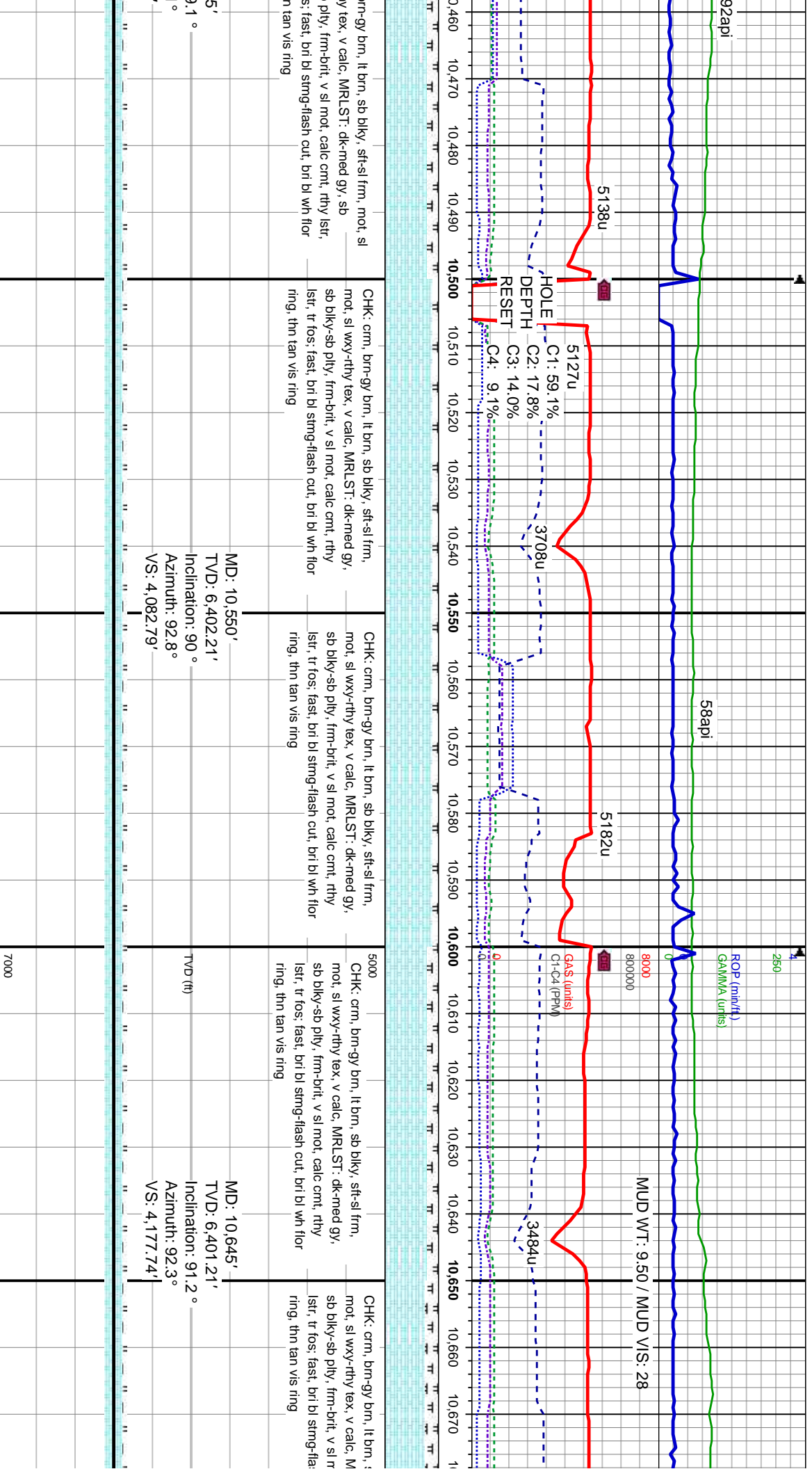
MD: 10,169'
TVD: 6,401.04'
Inclination: 90.4°
Azimuth: 91.8°
VS: 3,702'

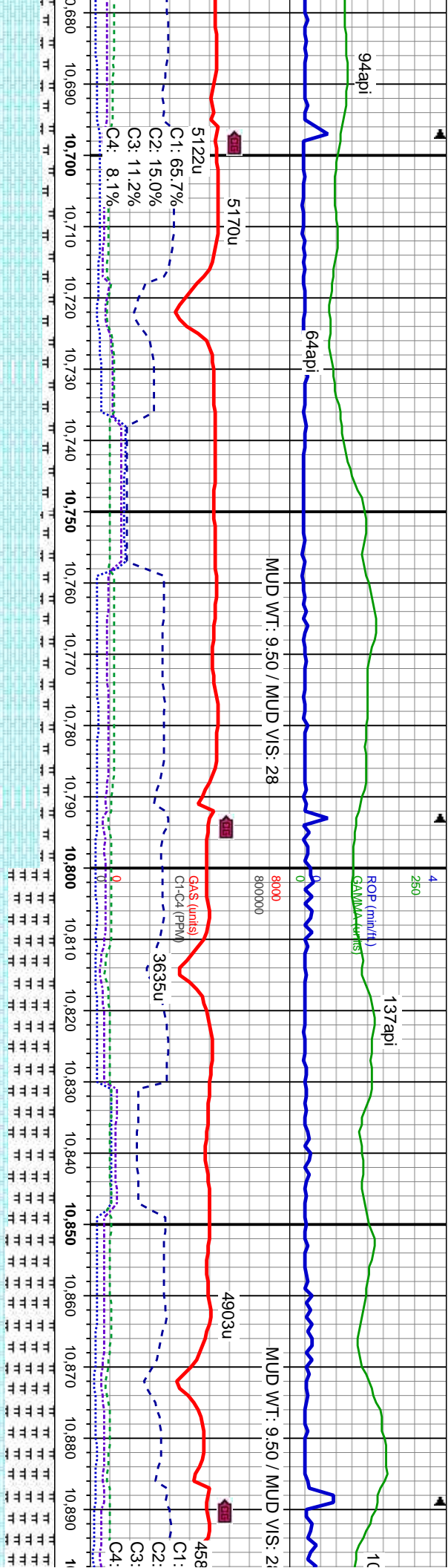
TVD (ft)

7000

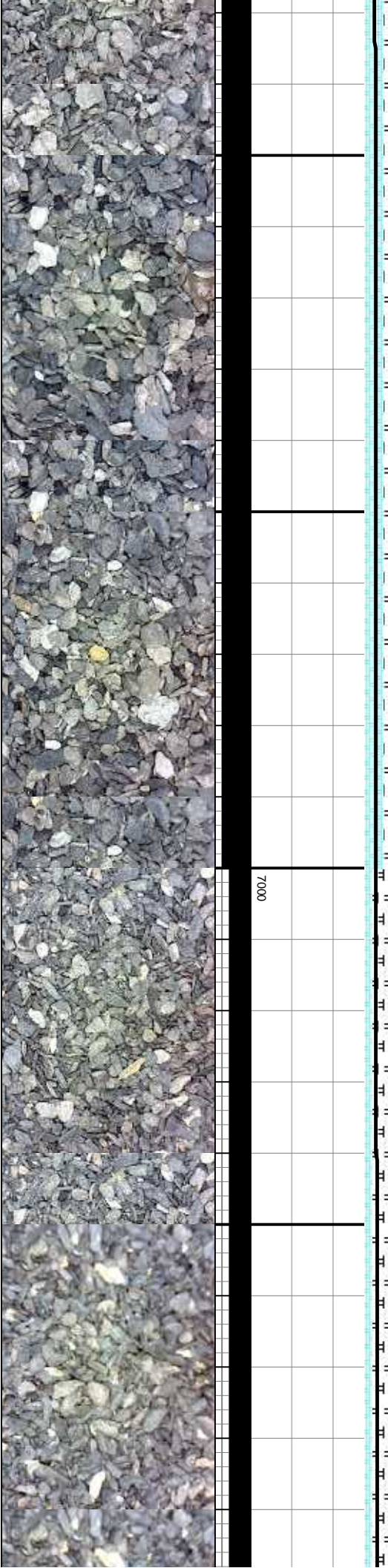


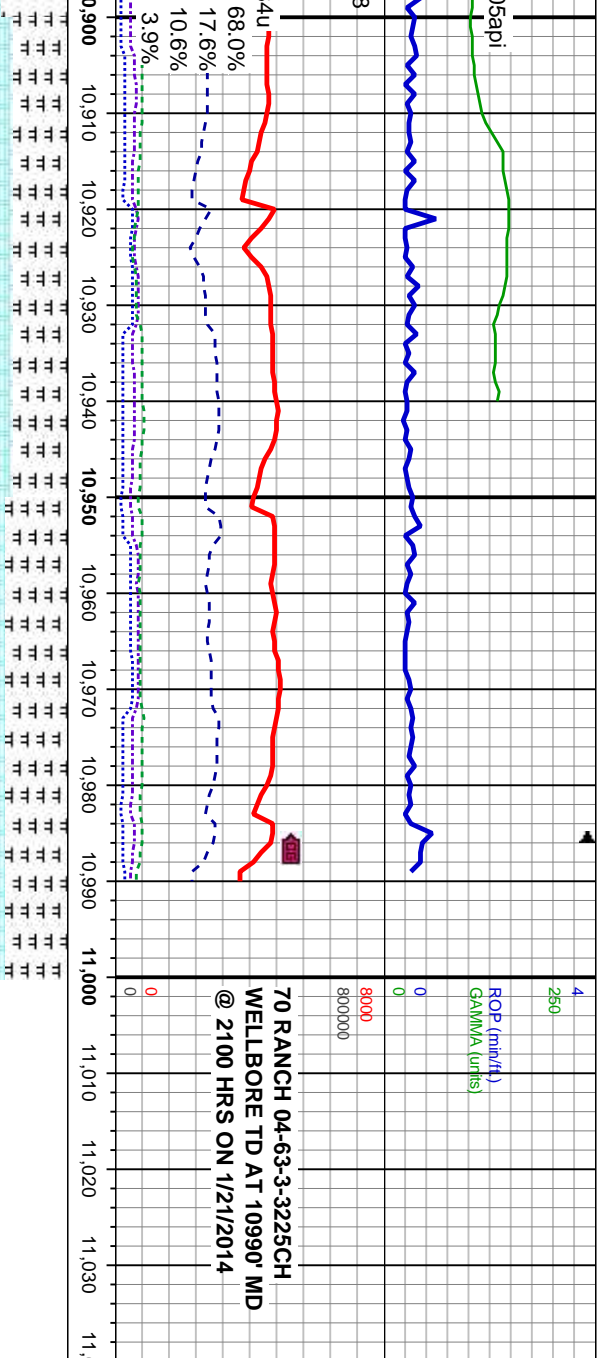






sb blkly, sft-sl frm, wxy-rthy tex, v calc, MRLST: dk-med gy, sb blkly-sb ply, frm-brlt, v sl mot, calc cnt, rthy lstr, tr fos, fast, bri bl stmg-flash cut, bri bl wh flor ring, thn tan vis ring	CHK: brn-gy brn, lt brn, sb blkly, sft-sl frm, mot, sl wxy-rthy tex, v calc, MRLST: dk-med gy, sb blkly-sb ply, frm-brlt, v sl mot, calc cnt, rthy lstr, tr fos, fast, bri bl stmg-flash cut, bri bl wh flor ring, thn tan vis ring	CHK: brn-gy brn, lt brn, sb blkly, sft-sl frm, mot, sl wxy-rthy tex, v calc, MRLST: dk-med gy, sb blkly-sb ply, frm-brlt, v sl mot, calc cnt, rthy lstr, tr fos, fast, bri bl stmg-flash cut, bri bl wh flor ring, thn tan vis ring	5000 CHK: brn-gy brn, lt brn, sb blkly, sft-sl frm, mot, sl wxy-rthy tex, v calc, MRLST: dk-med gy, sb blkly-sb ply, frm-brlt, v sl mot, calc cnt, rthy lstr, tr fos, com bent: fast, bri bl stmg-flash cut, bri bl wh flor ring, thn tan vis ring	CHK: brn-gy brn, lt brn, sb blkly, sft-sl frm, mot, sl wxy-rthy tex, v calc, MRLST: dk-med gy, sb blkly-sb ply, frm-brlt, v sl mot, calc cnt, rthy lstr, tr fos, com bent: fast, bri bl stmg-flash cut, bri bl wh flor ring, thn tan vis ring
	MD: 10,741' TVD: 6,398.28' Inclination: 92.3 ° Azimuth: 91.7° VS: 4,273.68'		MD: 10,837' TVD: 6,393.34' Inclination: 93.6 ° Azimuth: 91° VS: 4,369.54'	





CHK: brn-gy brn, lt brn, sb blkly, sft-sl frm, mot, sl wxy-rthy tex, v calc, MRLST: dk-med gy, sb blkly-sb ply, frm-brt, v sl mot, calc cntl, rthy lst, tr fos, com bent; fast, bri bl string-flash cut, bri bl wh flr ring, thn tan vis ring	CHK: brn-gy brn, lt brn, sb blkly, sft-sl frm, mot, sl wxy-rthy tex, v calc, MRLST: dk-med gy, sb blkly-sb ply, frm-brt, v sl mot, calc cntl, rthy lst, tr fos, com bent; fast, bri bl string-flash cut, bri bl wh flr ring, thn tan vis ring	5000 THANK YOU FOR USING COLUMBINE LOGGING, INC.
MD: 10,937' TVD: 6,385.84' Inclination: 95° Azimuth: 90.3° VS: 4,469.26'		TVD (ft)
		7000