

1625 Broadway  
Suite 2000  
Denver, CO 80202  
  
Tel: 303.228.4000  
Fax: 303.228.4280  
www.nobleenergyinc.com



4/15/2014

Colorado Oil and Gas Conservation Commission  
The Chancery Building  
1120 Lincoln Street, Suite 801  
Denver, CO 80203  
Attn: Mr. Matt Lepore, Director

RE: Heartland C31-78-1HN  
SESE Township 4 North, Range 65 West, 6th P.M.  
Weld County, Colorado

Dear Director:

Noble Energy, Inc. ("NEI") is planning to drill the captioned boundary well in accordance with the provisions of COGCC Rule 318A.e.

NEI's proposed wellbore spacing unit consists of the N/2NW/4 Sec. 6, T3N, R64W, T4N, R64W, w/2 of Sec. 31 creating a 372-acre wellbore spacing unit for the Niobrara formation. NEI is the only owner within the proposed wellbore spacing unit, therefore NEI hereby attests that no notice letters are required under COGCC Rule 318A(l).e.(6).

Enclosed are copies of the following documents to assist you in your review and approval of NEI's proposed APD for the captioned well:

- Map & plat illustrating proposed wellbore spacing unit.

Thank you for your attention to the enclosed. NEI respectfully requests that the COGCC review the enclosed information and approve the Application for Permit to Drill the captioned well.

Sincerely,

*Andrea Rawson*

Andrea Rawson  
Regulatory Analyst  
Noble Energy Inc.

## WELL LOCATION CERTIFICATE

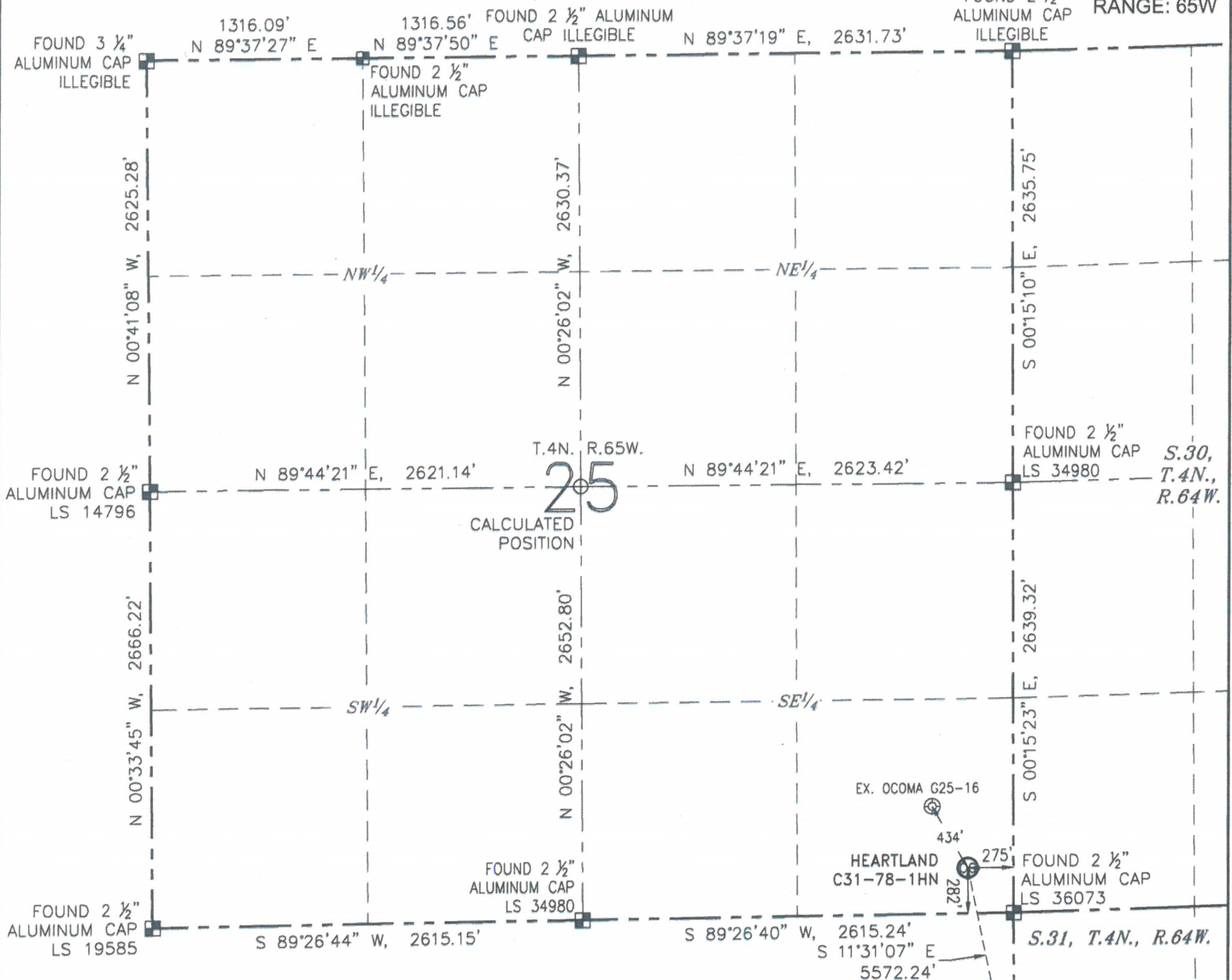
HEARTLAND C31-78-1HN

(SHEET 1 OF 3)

SECTION: 25

TOWNSHIP: 4N

RANGE: 65W



## NOTES:

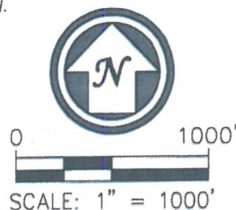
1. BEARINGS ARE GRID BEARINGS OF THE COLORADO STATE PLANE COORDINATE SYSTEM, NORTH ZONE, NAD 83. THE LINEAL DIMENSIONS SHOWN HEREON ARE BASED UPON THE "U.S. SURVEY FOOT".
2. GROUND ELEVATIONS ARE BASED UPON NGS OPUS SOLUTION NAVD 88 DATUM COMPUTED USING GEOID09.
3. IMPROVEMENTS: SEE LOCATION DRAWING FOR ALL VISIBLE IMPROVEMENTS WITHIN 500' OF THE DISTURBED AREA.
4. SURFACE USE: RANGELAND.
5. INSTRUMENT OPERATOR: ANTONIO SMITH.
6. THE NEAREST EXISTING WELL: OCOMA G25-16, 434' NW.

IN ACCORDANCE WITH A REQUEST FROM MATT VERBIT WITH NOBLE ENERGY INC., R&R ENGINEERS-SURVEYORS, INC. HAS DETERMINED THE SURFACE HOLE LOCATION OF THE HEARTLAND C31-78-1HN WELL TO BE 282' FROM THE SOUTH LINE AND 275' FROM THE EAST LINE AS MEASURED AT RIGHT ANGLES FROM THE SECTION LINES OF SECTION 25, TOWNSHIP 4 NORTH, RANGE 65 WEST, AND THE BOTTOM HOLE LOCATION TO BE 75' FROM THE SOUTH LINE AND 808' FROM THE WEST LINE AS MEASURED AT RIGHT ANGLES FROM THE SECTION LINES OF SECTION 31, TOWNSHIP 4 NORTH, RANGE 64 WEST OF THE 6TH PRINCIPAL MERIDIAN, WELD COUNTY, COLORADO.

I HEREBY CERTIFY THAT THIS WELL LOCATION CERTIFICATE WAS PREPARED BY ME, OR UNDER MY DIRECT SUPERVISION, THAT THE FIELD WORK WAS COMPLETED ON 09/30/2013, FOR AND ON BEHALF OF NOBLE ENERGY INC., THAT IT IS NOT A LAND SURVEY PLAT OR AN IMPROVEMENT SURVEY PLAT, AND THAT IT IS NOT TO BE RELIED UPON FOR ESTABLISHMENT OF FENCES, BUILDINGS, OR OTHER FUTURE IMPROVEMENT LINES.

## NEAREST CULTURAL ITEMS:

BUILDING:	1291' E
BUILDING UNIT:	1188' E
HIGH OCCUPANCY BUILDING UNIT:	5280'+
DESIGNATED OUTSIDE ACTIVITY AREA:	5280'+
PUBLIC ROAD (CR 49):	254' E
ABOVEGROUND UTILITY:	252' S
RAILROAD:	5280'+
PROPERTY LINE:	275' E



## LEGEND

- |                 |                  |                       |
|-----------------|------------------|-----------------------|
| ⊗ PROPOSED WELL | ● BOTTOM HOLE    | ○ CALCULATED POSITION |
| ⊙ EXISTING WELL | ■ FOUND MONUMENT |                       |

## SURFACE HOLE LOCATION

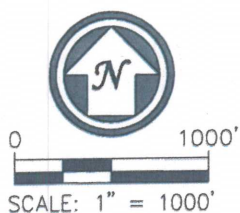
LATITUDE: N 40.27673°  
 LONGITUDE: W 104.60332°  
 PDOP: 1.6  
 ELEVATION: 4846'  
 1/4-1/4: SE 1/4 SE 1/4





## BOTTOM HOLE LOCATION

LATITUDE: N 40.26171°  
 LONGITUDE: W 104.59953°



ANTONIO W. SMITH, PLS 38320  
 FOR AND ON BEHALF OF R&R ENGINEERS-SURVEYORS, INC. DATE: 01/11/2014  
 JOB NO.: NE13301



 PROPOSED WELL  
 EXISTING WELL  
 FOUND MONUMENT  
 CALCULATED POSITION



ANTONIO W. SMITH, PLS 38320  
FOR AND ON BEHALF OF R&R DATE: 01/11/2014  
ENGINEERS-SURVEYORS, INC. JOB NO.: NE13301



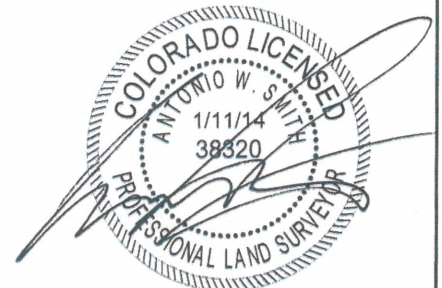
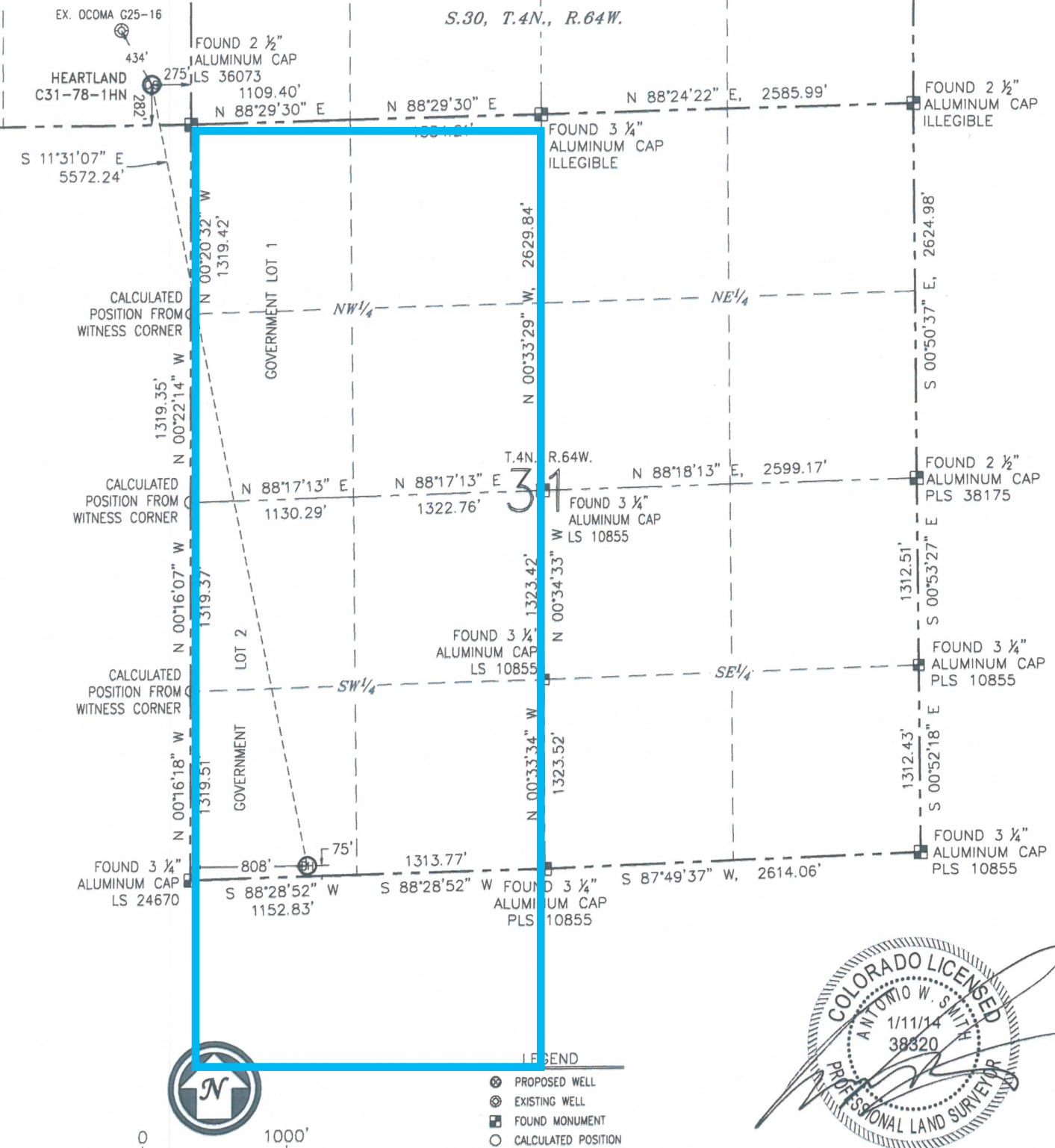
# WELL LOCATION CERTIFICATE

HEARTLAND C31-78-1HN  
(SHEET 3 OF 3)

SECTION: 25  
TOWNSHIP: 4N  
RANGE: 65W

S.25, T.4N., R.65W.

S.30, T.4N., R.64W.



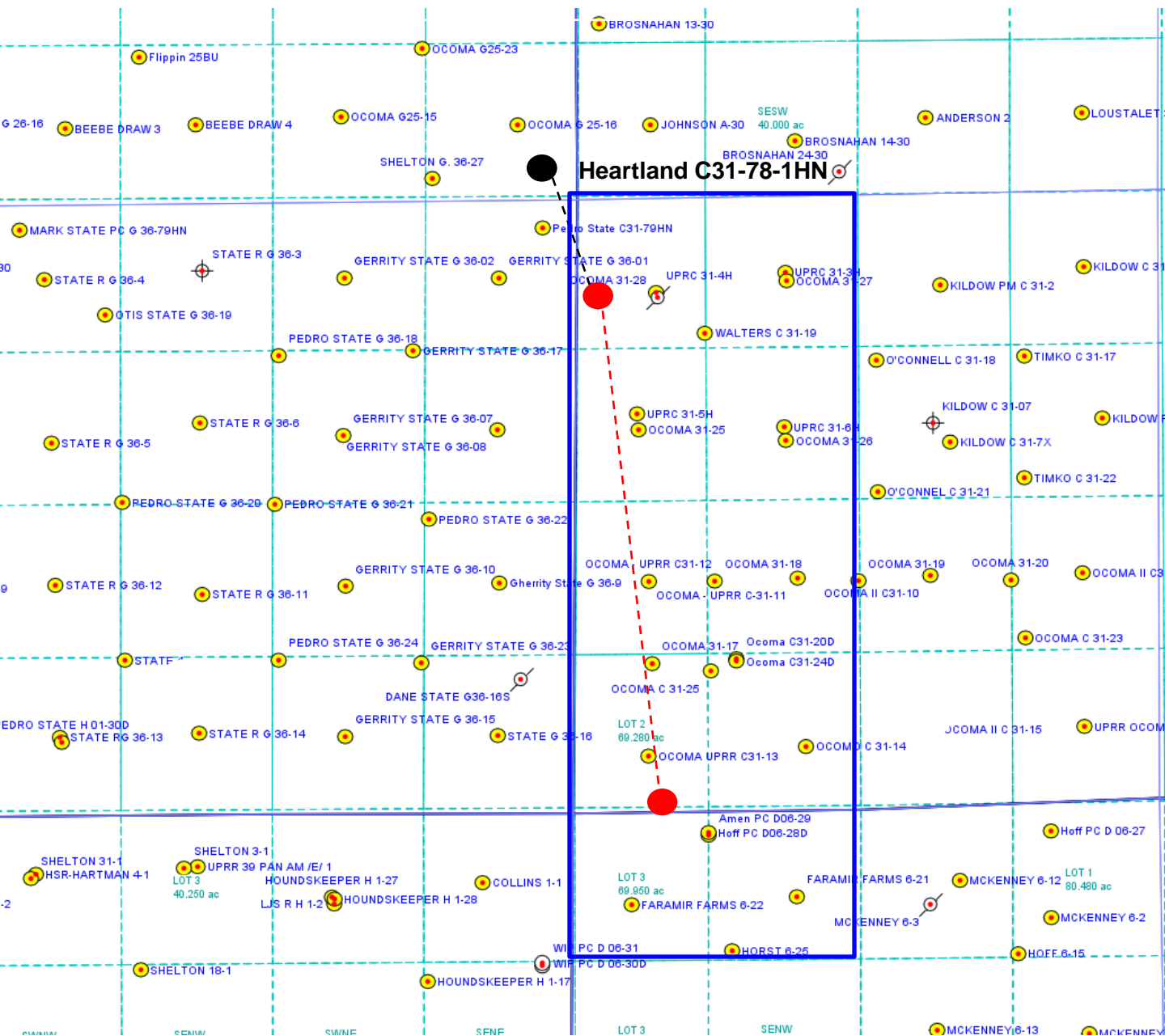
ANTONIO W. SMITH, PLS 38320  
FOR AND ON BEHALF OF R&R ENGINEERS-SURVEYORS, INC. DATE: 01/11/2014  
JOB NO.: NE13301

# Heartland C31-78-1HN

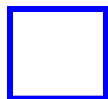
Proposed Spacing Unit – Noble Energy, Inc

N/2NW/4 Section 6, Township 3 North, Range 64 West

W/2 Section 31, Township 4 North, Range 64 West



Legend



Proposed 371.86± acre spacing unit



Bottom Hole Location