

## WELL LOCATION CERTIFICATE

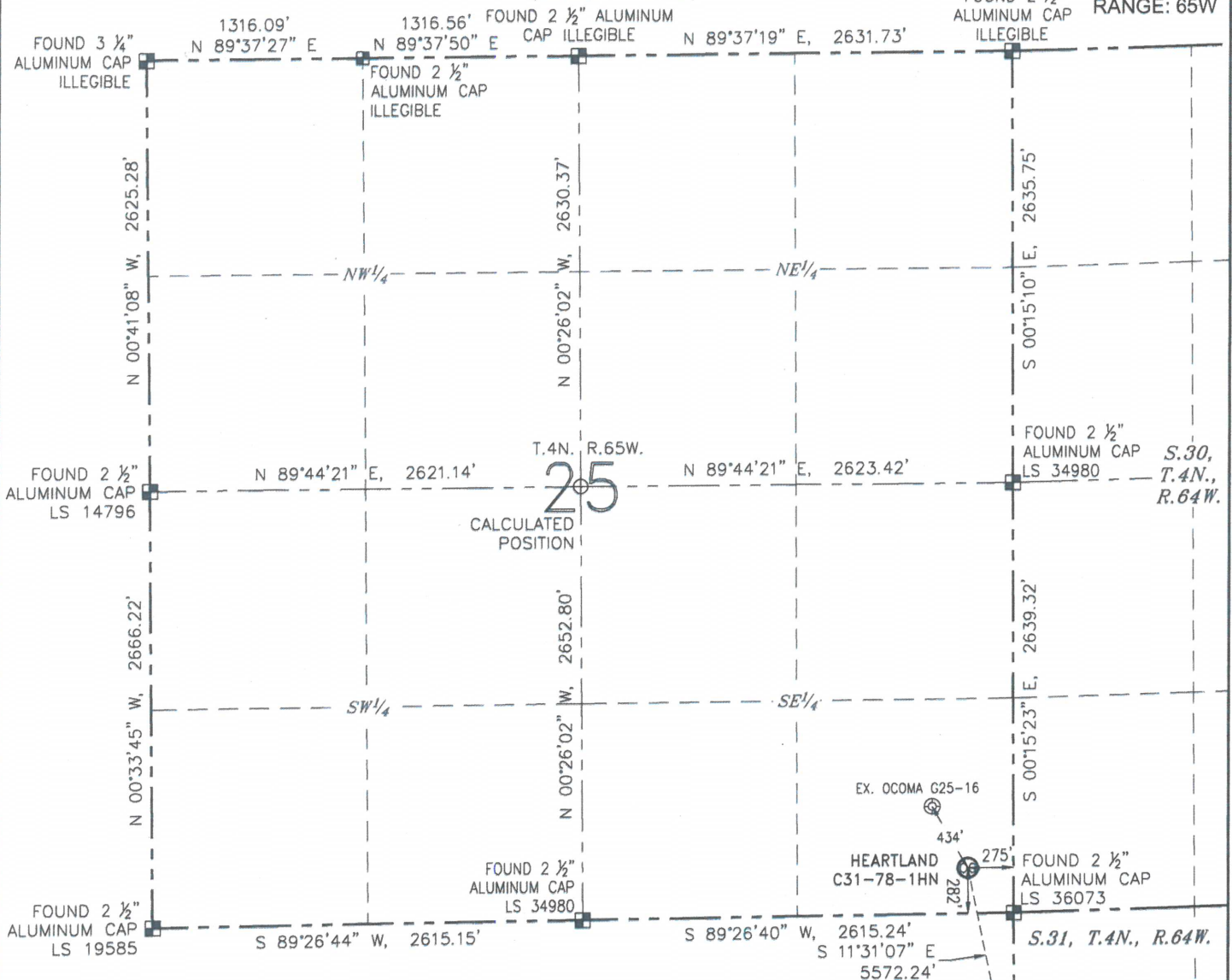
HEARTLAND C31-78-1HN

(SHEET 1 OF 3)

SECTION: 25

TOWNSHIP: 4N

RANGE: 65W



## NOTES:

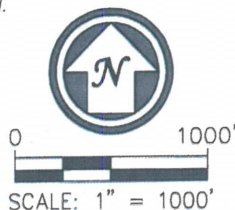
1. BEARINGS ARE GRID BEARINGS OF THE COLORADO STATE PLANE COORDINATE SYSTEM, NORTH ZONE, NAD 83. THE LINEAL DIMENSIONS SHOWN HEREON ARE BASED UPON THE "U.S. SURVEY FOOT".
2. GROUND ELEVATIONS ARE BASED UPON NGS OPUS SOLUTION NAVD 88 DATUM COMPUTED USING GEOID09.
3. IMPROVEMENTS: SEE LOCATION DRAWING FOR ALL VISIBLE IMPROVEMENTS WITHIN 500' OF THE DISTURBED AREA.
4. SURFACE USE: RANGELAND.
5. INSTRUMENT OPERATOR: ANTONIO SMITH.
6. THE NEAREST EXISTING WELL: OCOMA G25-16, 434' NW.

IN ACCORDANCE WITH A REQUEST FROM MATT VERBIT WITH NOBLE ENERGY INC., R&R ENGINEERS-SURVEYORS, INC. HAS DETERMINED THE SURFACE HOLE LOCATION OF THE HEARTLAND C31-78-1HN WELL TO BE 282' FROM THE SOUTH LINE AND 275' FROM THE EAST LINE AS MEASURED AT RIGHT ANGLES FROM THE SECTION LINES OF SECTION 25, TOWNSHIP 4 NORTH, RANGE 65 WEST, AND THE BOTTOM HOLE LOCATION TO BE 75' FROM THE SOUTH LINE AND 808' FROM THE WEST LINE AS MEASURED AT RIGHT ANGLES FROM THE SECTION LINES OF SECTION 31, TOWNSHIP 4 NORTH, RANGE 64 WEST OF THE 6TH PRINCIPAL MERIDIAN, WELD COUNTY, COLORADO.

I HEREBY CERTIFY THAT THIS WELL LOCATION CERTIFICATE WAS PREPARED BY ME, OR UNDER MY DIRECT SUPERVISION, THAT THE FIELD WORK WAS COMPLETED ON 09/30/2013, FOR AND ON BEHALF OF NOBLE ENERGY INC., THAT IT IS NOT A LAND SURVEY PLAT OR AN IMPROVEMENT SURVEY PLAT, AND THAT IT IS NOT TO BE RELIED UPON FOR ESTABLISHMENT OF FENCES, BUILDINGS, OR OTHER FUTURE IMPROVEMENT LINES.

## NEAREST CULTURAL ITEMS:

BUILDING:	1291' E
BUILDING UNIT:	1188' E
HIGH OCCUPANCY BUILDING UNIT:	5280'+
DESIGNATED OUTSIDE ACTIVITY AREA:	5280'+
PUBLIC ROAD (CR 49):	254' E
ABOVEGROUND UTILITY:	252' S
RAILROAD:	5280'+
PROPERTY LINE:	275' E



## LEGEND

- |                 |                  |                       |
|-----------------|------------------|-----------------------|
| ⊙ PROPOSED WELL | ● BOTTOM HOLE    | ○ CALCULATED POSITION |
| ⊗ EXISTING WELL | ⊠ FOUND MONUMENT |                       |

## SURFACE HOLE LOCATION

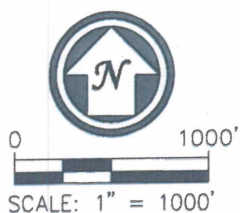
LATITUDE: N 40.27673°  
 LONGITUDE: W 104.60332°  
 PDOP: 1.6  
 ELEVATION: 4846'  
 ¼-¼: SE¼SE¼





## BOTTOM HOLE LOCATION

LATITUDE: N 40.26171°  
 LONGITUDE: W 104.59953°



ANTONIO W. SMITH, PLS 38320  
 FOR AND ON BEHALF OF R&R ENGINEERS-SURVEYORS, INC. DATE: 01/11/2014  
 JOB NO.: NE13301



 PROPOSED WELL  
 EXISTING WELL  
 FOUND MONUMENT  
 CALCULATED POSITION



ANTONIO W. SMITH, PLS 38320  
FOR AND ON BEHALF OF R&R DATE: 01/11/2014  
ENGINEERS-SURVEYORS, INC. JOB NO.: NE13301



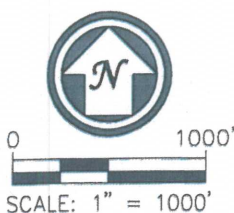
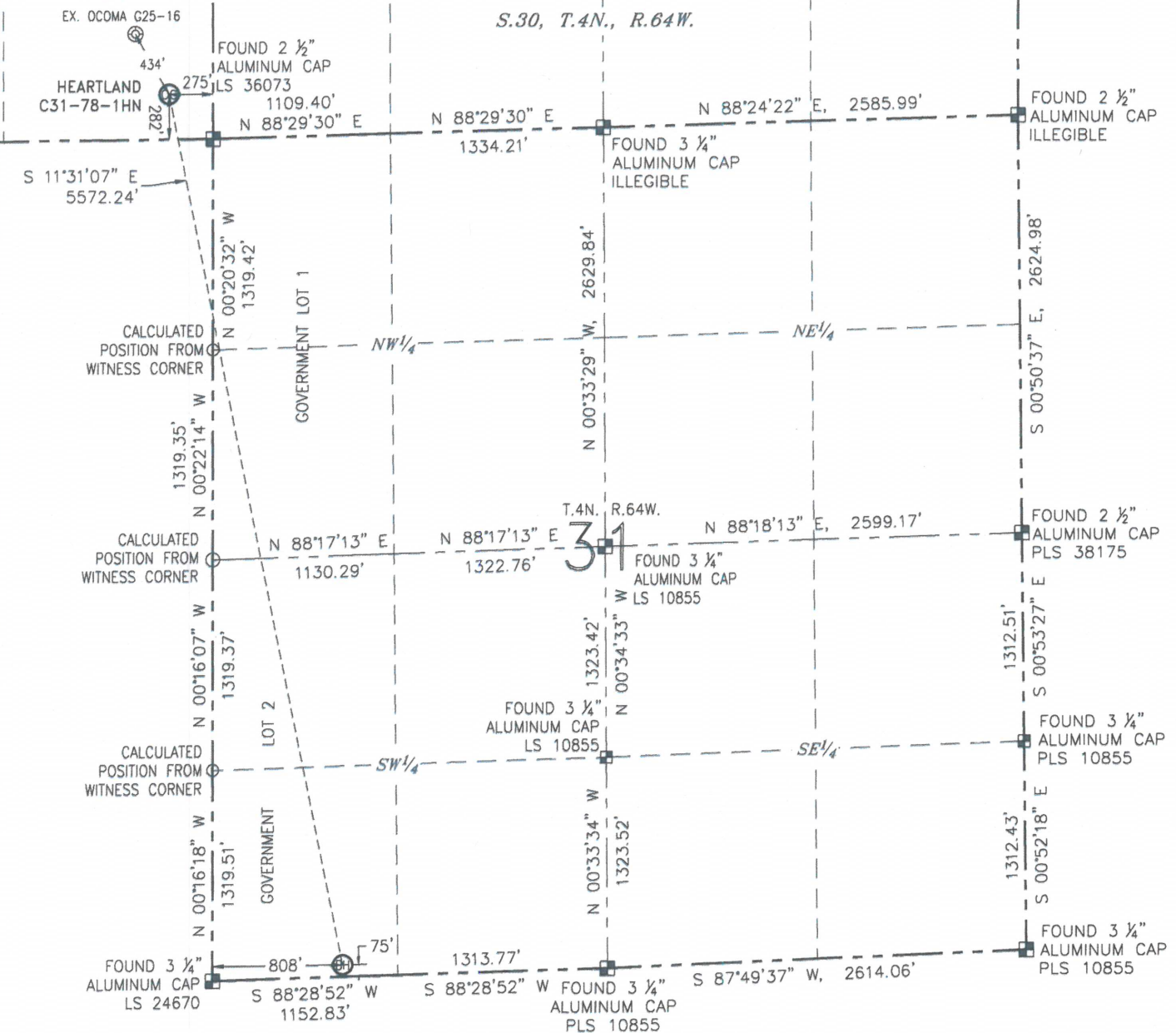
# WELL LOCATION CERTIFICATE

HEARTLAND C31-78-1HN  
(SHEET 3 OF 3)

SECTION: 25  
TOWNSHIP: 4N  
RANGE: 65W

S.25, T.4N., R.65W.

S.30, T.4N., R.64W.



## LEGEND

- ⊗ PROPOSED WELL
- ⊙ EXISTING WELL
- FOUND MONUMENT
- CALCULATED POSITION

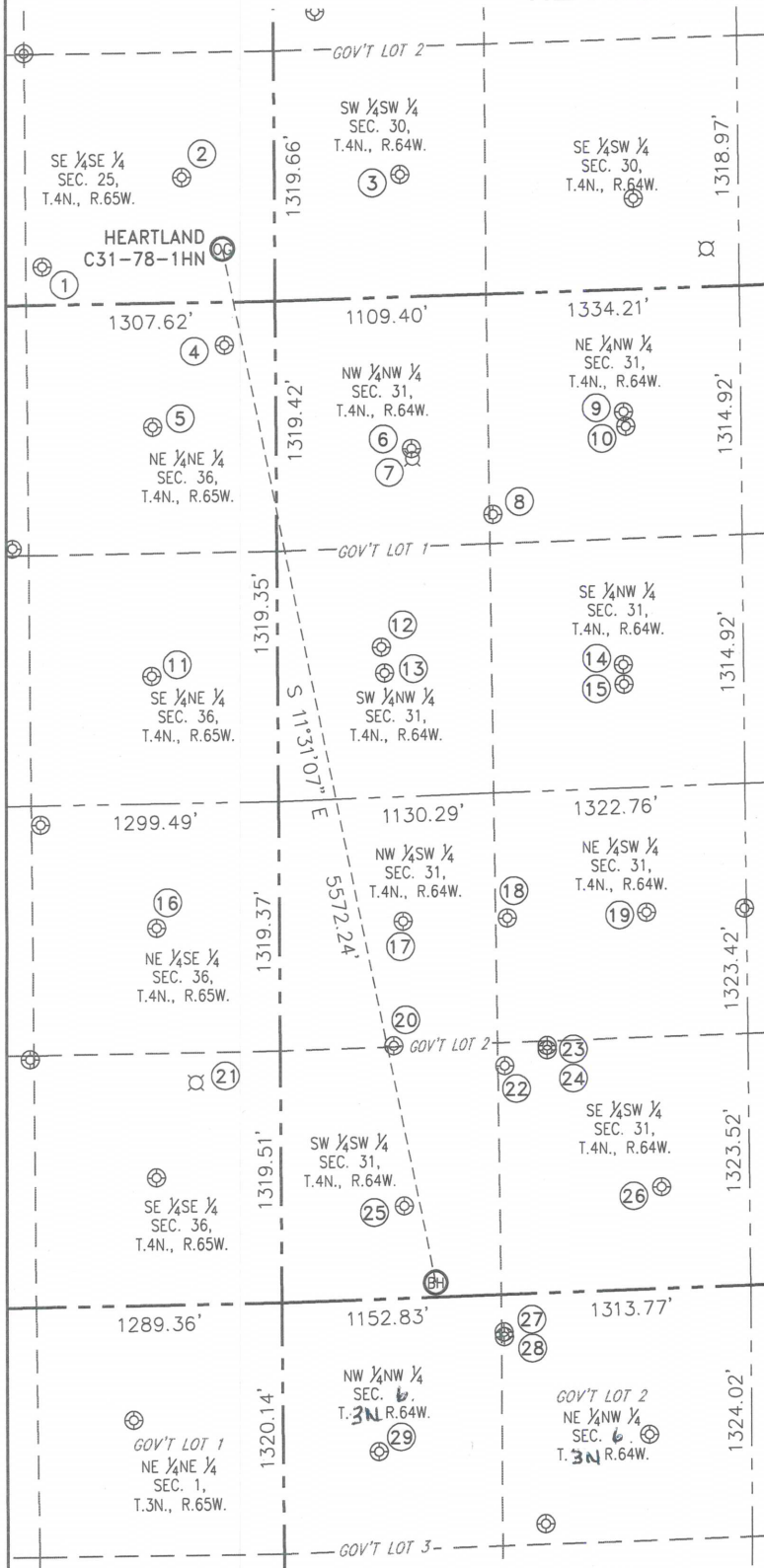


ANTONIO W. SMITH, PLS 38320  
FOR AND ON BEHALF OF R&R ENGINEERS-SURVEYORS, INC. DATE: 01/11/2014  
JOB NO.: NE13301

# SITE SKETCH

## HEARTLAND C31-78-1HN

SECTION: 25  
TOWNSHIP: 4N  
RANGE: 65W



① SHELTON G36-27  
SE 1/4 SE 1/4  
201' FSL 1223' FEL  
LAT: N 40.27651°  
LONG: W 104.60672°  
PDOP: 1.3  
ELEV: 4830'

③ JOHNSON A-30  
SW 1/4 SW 1/4  
646' FSL 658' FWL  
LAT: N 40.27776°  
LONG: W 104.59997°  
PDOP: 1.5  
ELEV: 4864'

⑥ UPRC 31-4H  
NW 1/4 NW 1/4  
805' FNL 710' FWL  
LAT: N 40.27378°  
LONG: W 104.59981°  
PDOP: 2.0  
ELEV: 4866'

⑨ UPRC 31-3H  
NE 1/4 NW 1/4  
649' FNL 1827' FWL  
LAT: N 40.27426°  
LONG: W 104.59580°  
PDOP: 1.7  
ELEV: 4880'

⑫ UPRC 31-5H  
SW 1/4 NW 1/4  
1847' FNL 545' FWL  
LAT: N 40.27091°  
LONG: W 104.60042°  
PDOP: 1.9  
ELEV: 4871'

⑮ OCOMA 31-26  
SE 1/4 NW 1/4  
2086' FNL 1819' FWL  
LAT: N 40.27031°  
LONG: W 104.59585°  
PDOP: 2.1  
ELEV: 4880'

⑮ OCOMA 31-18  
NE 1/4 SW 1/4  
1980' FSL 1197' FWL  
LAT: N 40.26696°  
LONG: W 104.59810°  
PDOP: 2.3  
ELEV: 4873'

⑮ DANE STATE G36-165  
SE 1/4 SE 1/4  
PER COGCC:  
1161' FSL  
445' FEL  
PLUGGED &  
ABANDONED

⑮ OCOMA C31-24D  
SE 1/4 SW 1/4  
1275' FSL 1402' FWL  
LAT: N 40.26503°  
LONG: W 104.59738°  
PDOP: 2.1  
ELEV: 4864'

⑮ HOFF PC D D06-28D  
NE 1/4 NW 1/4  
197' FNL 1165' FWL  
LAT: N 40.26098°  
LONG: W 104.59826°  
PDOP: 2.4  
ELEV: 4838'

② OCOMA G25-16  
SE 1/4 SE 1/4  
662' FSL 486' FEL  
LAT: N 40.27777°  
LONG: W 104.60407°  
PDOP: 1.4  
ELEV: 4843'

④ PEDRO STATE C31-79HN  
NE 1/4 NE 1/4  
229' FNL 268' FEL  
LAT: N 40.27533°  
LONG: W 104.60331°  
PDOP: 1.8  
ELEV: 4846'

⑦ OCOMA 31-28  
NW 1/4 NW 1/4  
PER COGCC:  
856' FNL  
714' FWL  
PLUGGED &  
ABANDONED

⑩ OCOMA 31-27  
NE 1/4 NW 1/4  
726' FNL 1837' FWL  
LAT: N 40.27405°  
LONG: W 104.59577°  
PDOP: 2.2  
ELEV: 4880'

⑬ OCOMA 31-25  
SW 1/4 NW 1/4  
1983' FNL 561' FWL  
LAT: N 40.27054°  
LONG: W 104.60036°  
PDOP: 1.9  
ELEV: 4869'

⑮ GERRITY STATE G36-9  
NE 1/4 SE 1/4  
1983' FSL 647' FEL  
LAT: N 40.26691°  
LONG: W 104.60471°  
PDOP: 1.5  
ELEV: 4846'

⑮ OCOMA C31-11  
NE 1/4 SW 1/4  
1983' FSL 1930' FWL  
LAT: N 40.26700°  
LONG: W 104.59547°  
PDOP: 2.3  
ELEV: 4874'

⑮ OCOMA II C31-25  
SE 1/4 SW 1/4  
1198' FSL 1177' FWL  
LAT: N 40.26481°  
LONG: W 104.59819°  
PDOP: 2.3  
ELEV: 4864'

⑮ OCOMA II C31-13  
SW 1/4 SW 1/4  
477' FSL 644' FWL  
LAT: N 40.26281°  
LONG: W 104.60011°  
PDOP: 1.8  
ELEV: 4856'

⑮ AMEN PC D06-29  
NE 1/4 NW 1/4  
222' FNL 1165' FWL  
LAT: N 40.26091°  
LONG: W 104.59826°  
PDOP: 3.0  
ELEV: 4838'

⑤ GERRITY STATE G36-1  
NE 1/4 NE 1/4  
657' FNL 650' FEL  
LAT: N 40.27416°  
LONG: W 104.60468°  
PDOP: 1.9  
ELEV: 4844'

⑧ WALTERS C31-19  
NE 1/4 NW 1/4  
1166' FNL 1135' FWL  
LAT: N 40.27281°  
LONG: W 104.59829°  
PDOP: 2.0  
ELEV: 4877'

⑪ GERRITY STATE G36-8  
SE 1/4 NE 1/4  
1970' FNL 663' FEL  
LAT: N 40.27055°  
LONG: W 104.60475°  
PDOP: 1.6  
ELEV: 4849'

⑭ UPRC 31-6H  
SE 1/4 NW 1/4  
1984' FNL 1817' FWL  
LAT: N 40.27059°  
LONG: W 104.59586°  
PDOP: 2.1  
ELEV: 4880'

⑮ OCOMA II C31-12  
NW 1/4 SW 1/4  
1983' FSL 649' FWL  
LAT: N 40.26694°  
LONG: W 104.60007°  
PDOP: 2.2  
ELEV: 4874'

⑮ OCOMA 31-17  
NW 1/4 SW 1/4  
1325' FSL 595' FWL  
LAT: N 40.26513°  
LONG: W 104.60027°  
PDOP: 2.5  
ELEV: 4858'

⑮ OCOMA C31-20D  
SE 1/4 SW 1/4  
1298' FSL 1402' FWL  
LAT: N 40.26510°  
LONG: W 104.59738°  
PDOP: 2.1  
ELEV: 4864'

⑮ OCOMA II C31-14  
SE 1/4 SW 1/4  
528' FSL 1999' FWL  
LAT: N 40.26301°  
LONG: W 104.59526°  
PDOP: 2.0  
ELEV: 4852'

⑮ FARAMIR FARM 06-22  
NW 1/4 NW 1/4  
806' FNL 502' FWL  
LAT: N 40.25928°  
LONG: W 104.60064°  
PDOP: 3.3  
ELEV: 4861'

## NOTES:

- THIS SKETCH DOES NOT REPRESENT A BOUNDARY SURVEY.
- HORIZONTAL DATUM IS NAD 83.
- VERTICAL DATUM IS NAVD 88.

## LEGEND

- ⊗ PROPOSED WELL    ⊕ BOTTOM HOLE  
⊙ EXISTING WELL    ✕ ABANDONED WELL



0 1000'  
SCALE: 1" = 1000'

DATE: 01/13/2014  
JOB NO.: NE13301